

Safety Information

WARNING! Do not insert card!

Read these simple guidelines. Breaking the rules may be dangerous or illegal. Further detailed information is given in this manual.

DRIVING

Do not use the GlobeTrotter while driving; park the vehicle first.

INTERFERENCE

All wireless devices may get interference which could affect performance.

Safety Information

DO NOT USE IN HOSPITALS

Follow any regulations or rules. Do not use near medical equipment.

DO NOT USE IN AIRCRAFT

Wireless devices can cause interference. Using them on aircraft is illegal.

DO NOT USE NEAR REFUELING POINTS

Do not use the device at a refueling point. Do not use near fuel or chemicals.

USE SENSIBLY

Do not touch the antenna unnecessarily.

USE QUALIFIED SERVICE

Safety Information

Do not attempt to disassemble GlobeTrotter. Doing so will void warranty. Service should only be performed by Authorized Service Centres.

ACCESSORIES

Use only approved accessories. Do not connect incompatible products.

EMERGENCY CALLS

NOTE: Voice calls, including emergency calls, can ONLY be made using a compatible Option headset.

To make an emergency call:

1. Make sure that the GlobeTrotter card is properly inserted in the PC Card slot and that the headset is connected to the card. Some networks may require that a valid SIM card is inserted in the card.

Safety Information

LIQUIDS

Do not expose your card to rain, or spill beverages on it.

EXTREME TEMPERATURES

Do not expose the card or the antenna to extreme temperatures, minimum -25 and maximum +70 degrees Celsius.

Introduction

Congratulations on your purchase of the GlobeTrotter Universal Tri-Band GSM/GPRS PC-radio Card.

GlobeTrotter is the ultimate solution to provide high performance mobile wireless functionality for Laptops, Notebooks, and Handheld PDA's enabling users to make telephone calls, browse the Internet, send and receive e-Mails, with SIM and Phonebook management seamlessly integrated with Microsoft Outlook™.

The "Always On" feature of GPRS lends itself to real time remote connectivity and is ideal for the synchronisation of handheld and mobile devices with the office or home computer. GlobeTrotter is designed to support IPsec client software providing secure remote IP mobile access to corporate networks.

Introduction

GlobeTrotter is a triple-band GPRS/GSM modem in the form of a PC Card. It plugs into compatible portable computers or other devices with a PC Card type II or III slot.

This guide describes how to install the WirelessCommunication Manager (WCM) software on your PC and how to start using it. For more detailed information, consult the WCM Online Help.

Contents of the sales package

In the sales package, you will find the following items:

- GlobeTrotter GPRS PC Card
- a CD-Rom containing the software
- a leather wallet for the card

To overcome any installation and usage barriers and to enhance the user experience, the following documentation is also included:

Introduction

- *Quick Start Guide*, which gives the installation of the Wireless Communication Manager Software in a limited number of steps, and assists the user in making his/her first data or voice call
- *Online User Manual*, which describes a number of common scenarios of use. The online User manual can be accessed at all times through the Help menu of the software.

System requirements

The GlobeTrotter requires:

- an Intel compatible PC that runs Windows 95/98/ME,NT4,2000,XP or a PDA with Windows CE 3.0,3.1
- 60 MHz Pentium-compatible CPU
- 24 MB of RAM
- 3 MB available space on Hard Disk
- CD-Rom drive

Introduction

- PC Card (PCMCIA) Release 2.1, Type II or Type III card slot.

Network services

The GlobeTrotter GPRS PC Card Modem operates on the EGSM 900, GSM 1800 and PCS 1900 cellular networks.

To use your GlobeTrotter, you must first activate an account with a GSM/GPRS network provider and have received a Subscriber Identity Module (SIM) card from the GSM/GPRS provider.

Some service providers may not provide all communications services. Contact your service provider for further information about the availability and details of the services in your home network.

Additional information may be required from your service provider to activate the GPRS functionality of the GlobeTrotter card such as:

Introduction

- User Name - if applicable
- Password - if applicable
- Access Point Name (APN)
- IP Address - if not dynamic
- DNS Address - if not dynamic

Communications software

When you run the installation program, the following programs will be installed on your computer:

- Windows based telephony driver (TAPI compatible)
- The Wireless Communication Manager (TAPI compatible)

Introduction

the option wireless communication manager

The Wireless Communication Manager simplifies making and administering voice calls, SMS messaging and the configuration of GPRS settings for applications such as downloading e-mail or browsing the Internet.

Compatibility with Microsoft Outlook™ ensures new or updated address data need only be entered once: during start-up, WCM creates a **WCM Phonebook** by copying the current content of Outlook™. While WCM is in use, addresses in Outlook™ can be added or edited from within WCM Phonebook.

WCM provides all voice call features found on mobile phones including registers of calls made and missed. Calls can be made from Phonebook (based on current Outlook™ data) and a list of favourites can be selected from Phonebook.

Introduction

The **WCM** application also incorporates a powerful SMS editor, message templates, and a viewer for reading SMS messages. Incoming and outgoing messages are listed in Outlook™-style directories. The application also offers many other facilities, including the automatic generation of SMS texts.

The **GPRS controller** gives users a quick and easy way of defining GPRS connection settings.

Installation

Installation

This section provides step-by-step instructions on how to install the GlobeTrotter PC Card on your PC.

NOTE: There are some slight differences in the installation process between Windows 95/98/ME and Windows NT/2000/XP. If the installation differs from the steps described in this section, follow the instructions on the screen.

If you want to quit the Setup program without installing or uninstalling, just click **Cancel** and the **Exit Setup** to quit Setup. If you want to rerun the Setup program after having quit the installation before it was completed, follow the installation steps normally as if you were installing the program for the first time.

Inserting the SIM card in the GlobeTrotter card

1. Verify that you have a plug-in SIM card and locate the golden connector area on this SIM.
2. Look for the SIM connector on top of the GlobeTrotter card.
3. Slide the SIM card with the cut corner of the SIM to the centre of the GlobeTrotter, and with the golden connector area on it facing to the GlobeTrotter card.

Antenna

You need to eject the pop out antenna from the card in order to be able to establish a connection.

Installation

Installing GlobeTrotter and the Wireless Communication Manager

WARNING! Do not insert card!

1. Start **Windows**.
2. Close all applications.
3. Insert the CD-Rom into your computer's CD-Rom drive. If the auto-insertion is enabled the setup program will start automatically otherwise locate the Install.exe file on your CD-Rom and double click on it.
4. Now the installation program of the GlobeTrotter card will start. Choose the language between the 6 available: English, German, French, Spanish, Italian and Dutch.
5. Enter your licence key. This number can be found on the back of the CD-box.

Installation

6. The software will automatically be copied into the Program Files folder under WCM for Wireless Communication Manager. Another target folder can also be chosen during the installation process.
 7. When the '**Setup completed, insert GlobeTrotter**' dialog box appears, insert the GlobeTrotter card in a free PCMCIA slot on your computer. The card will be installed with the appropriate drivers.
 8. After the card has been installed correctly, click **Finish**.
-
9. You will now be asked to register the product. Registration is required to benefit from the warranty and support. Connect to the Internet and register online on the indicated webpage.
If this is not possible, enter all details in the registration wizard and send the registration fax to the number indicated. If you

Installation

choose to register later you will be able to start the registration from the appropriate button in the main interface.

Installing GlobeTrotter on Windows 2000.



To install GlobeTrotter on Windows 2000, please do the following:

1. Follow steps 1 through 7 as above.
2. After the GlobeTrotter has been detected by the operating system, go to the Windows 2000 Control Panel (**Start -> Settings -> Control Panel**) and double click the **Phone and Modem Options** icon.
3. Open the **Modems** tab and click the **Add...** button.
4. Click **Next>** and let Windows detect the modem.

Installation

5. Click **Next>** when Windows shows that the **GlobeTrotter GPRS PCMCIA Modem** has been detected.
6. Click **Continue Anyway** on the next dialog box. Click **Finish**.
7. Click **Finish** in the '**Setup Completed, insert GlobeTrotter**' dialog box.
8. Follow step 9 above for registration.

Getting Started

Getting Started

Starting the GlobeTrotter card.

NOTE: If you are running Windows NT 4.0, insert the GlobeTrotter into the PC Card slot before you turn on your computer.

Slide the SIM card into the SIM card slot of the GlobeTrotter and insert the GlobeTrotter into the PC Card slot of your computer. You may have to enter the PIN (Personal Identity Number) code if the PIN code request is activated in the SIM card. The PIN code is usually supplied with the SIM card. If you enter an incorrect PIN code three times in a row, you will need a PUK (Personal Unblocking Key) code to unblock the SIM card. If not, contact your service provider.

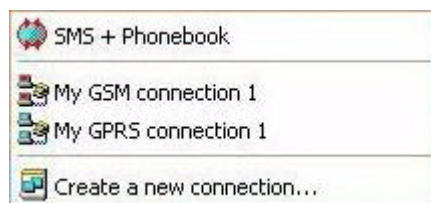
Getting Started

Using the GlobeTrotter card for a DATA connection.

Wait for a couple of seconds for the card to be detected.

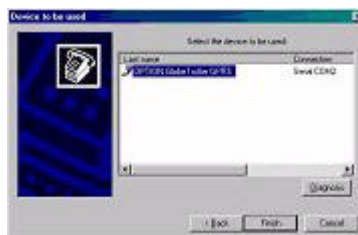
If you want to use the GPRS/GSM connection features you will first need to install them, one for the GSM and one for the GPRS connection.

Click on the GPRS controller icon on your desktop (bottom right corner) and choose Create a new connection.



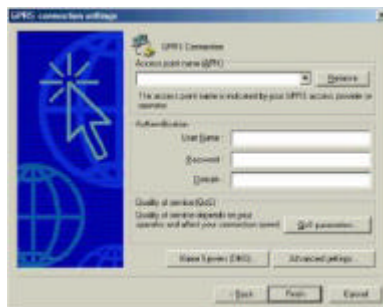
Getting Started

If you are using the card for the first time to set up a connection, you will need to proceed to an automatic detection. You can choose to detect the modem driver or to just search in all the COM ports. Only one selection is necessary. It is recommended to detect the modem driver. The wizard will find the Globetrotter card in the port where it is connected. Click Finish.



Getting Started

Enter a name for your connection (e.g. My GPRS connection with Operator X) and then proceed to the next installation screen. Fill in all the parameters of your GPRS connection. Enter the GPRS settings you have received from your provider.



Getting Started

In **Quality of Service (QoS)** you can change the QoS parameters. See the help files for definitions of the **QoS** parameters.

In **Name Servers (DNS)** you can specify the DNS if required by your carrier.

In **Advanced settings** you can modify the card settings and the dial properties. Click **Finish**. You are now ready to start a GPRS connection.

Setting up a GSM connection is similar to setting up a GPRS connection, so please refer to the above steps.

All connections can be started from the WCM controller icon in the taskbar.

Using the GlobeTrotter card for SMS, Voice and Phonebook management.

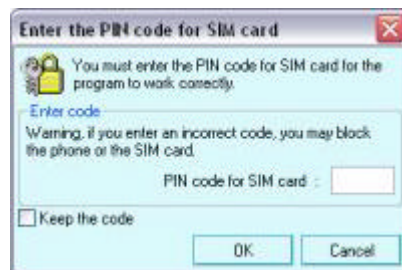
During the installation of the WCM software a link is established with the Startup folder. WCM will subsequently start every time the computer is switched on. The WCM icon then appears in the task bar.

If the WCM software does not start automatically when the computer is switched on, or if the WCM program has been closed in the meantime, it can be started again in the Start menu.

Once the program has started the PIN code will be requested, if the PIN code request is activated on the card, in order to activate the Globetrotter card.

The card will subsequently be registered onto the network.

Getting Started



When opening the program, you will be prompted to choose the profile you want to use or requested to create a new one.

Getting Started

This allows the use of the WCM software with different SIM cards or different GlobeTrotter cards.

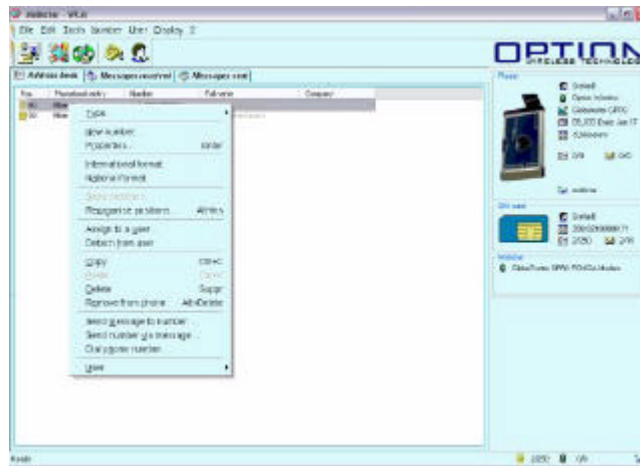
Once the profile is selected all the information regarding the network used, the GSM network signal strength, and the contents of the SIM card are displayed in the WCM main interface window.

Getting Started

Starting from the Phonebook tab in WCM, the user can send SMS messages, send the phone number in an SMS message, make a phone call to that number, add different phone numbers to a contact, etc.

A right click on a contact shows all the possibilities that the user has regarding that specific contact.

Getting Started



Getting Started

The WCM interface makes it easy to manage a phonebook, send and receive SMS messages and initiate a phone call. The program will automatically read the contacts in Microsoft Outlook making them available in the WCM software for all the operations described above.

Triple-band functionality

The GlobeTrotter card is a triple-band GPRS/GSM card: it operates in GSM 900, DCS 1800 and PCS 1900 networks.

Automatic selection is supported by the firmware for only two bands 900/1800 and 900/1900. Switching between frequencies to be used is done manually. To set the band mode go to the Voice dialer in the WCM software.

When the dialer is opened the current setting is displayed. Select the desired frequency. If you are in North America be use the band mode is set to GSM900/PCS1900.

Getting Started

Signal strength affecting cellular transmissions

You need to be in an area that is covered by a GPRS/GSM network to use the GlobeTrotter card.

Cellular networks differ from landline networks in many ways. For example, traffic loads and the strength of radio signals may vary in a cellular network and cause handovers.

It is recommended that you move the card to a location where the strongest possible cellular signal can be obtained. When the signal is strong, cellular transmission is the most efficient.

Accessories

Headset

In order to make and receive voice calls with the GlobeTrotter card, you need the Headset you can find in the retail box. The headset plugs into the connector at the back of the GlobeTrotter card.



Getting Started

External antenna cable

You can improve the reception and operation range of your GlobeTrotter card by using the External Antenna. It can be connected to any triple-band antenna that has a standard FME antenna connector.

Troubleshooting

This section points out the basic problems that could occur when you are installing and using the program. There is a list of symptoms and possible actions you can take in any of the following situations below.

Not enough disk space for installation.

There is not enough space to complete the installation on the selected drive. Select another drive for installation or delete unnecessary files to free up additional disk space.

If there are several hard disk drives in the system and you decide to install the program on a drive other than the one where the Windows system files are located, disk space is required on both drives. The program will always need to place some files in the Windows directory.

Troubleshooting

Setup does not accept the target directory.

The program can only be installed on a local drive.

The path to the directory is too long, more than 80 characters. Select another directory or shorten the names of the subdirectories.

The GlobeTrotter card cannot be installed or used.

The Interrupt Request (IRQ) resources may be in conflict. Check the GlobeTrotter resources from **Control Panel/System/Hardware/Device Manager/Modems/GlobeTrotter GPRS PCMCIA Modem/select Properties/Resources**. If there is a resource conflict, consult the Windows online help on changing the resource settings.

The GlobeTrotter card is not properly inserted. Make sure that the PC Card slot of the computer is functioning properly and that the GlobeTrotterdriver is installed (in Control Panel: Modems).

Troubleshooting

Also make sure that the SIM card has been inserted.

The network signal is weak, and you also suspect interference from the laptop.

In addition to the regular antenna attached to the GlobeTrotter card, an external antenna may be used. Attach it to the GlobeTrotter and the call quality may improve.

Agency Requirements

Agency Requirements

Federal Communications Commission Notice

This equipment has been tested and found to comply with the limits for a Class B digital device, pursuant to Part 15 of the FCC Rules. These limits are designed to provide reasonable protection against harmful interference in a residential installation. This equipment generates, uses, and can radiate radio frequency energy and, if not installed and used in accordance with the instructions, may cause harmful interference to radio communications. However, there is no guarantee that interference will not occur in a particular installation. If this

Agency Requirements

equipment does cause harmful interference to radio or television reception, which can be determined by turning the equipment off and on, the user is encouraged to try to correct the interference by one or more of the following measures:

- Reorient or relocate the receiving antenna.
- Increase the separation between the equipment and receiver.
- Connect the equipment into an outlet on a circuit different from that to which the receiver is connected.
- Consult the dealer or an experienced radio or television technician for help.

Modifications

The FCC requires the user to be notified that any changes or modifications made to this device that are not expressly approved by Compaq Computer Corporation may void the user's authority to operate the equipment.

Agency Requirements

Cables

Connections to this device must be made with shielded cables with metallic RFI/EMI connector hoods in order to maintain compliance with FCC Rules and Regulations.

Declaration of Conformity for products marked with the FCC logo - United States only

This device complies with Part 15 of the FCC Rules. Operation is subject to the following two conditions: (1) this device may not cause harmful interference, and (2) this device must accept any interference received, including interference that may cause undesired operation.

For questions regarding your product, contact:

Option
Kolonel Begaultlaan 45

Agency Requirements

3012 Leuven
Belgium

Or call:

+32 16 31 74 11

For questions regarding this FCC declaration, contact:

Option
Kolonel Begaultlaan 45
3012 Leuven
Belgium

Or call:

+32 16 31 74 11

To identify this product, refer to the Part, Series, or Model number found on the product.

Agency Requirements

Canadian Notice

This Class B digital apparatus meets all requirements of the Canadian Interference-Causing Equipment Regulations.

Avis Canadien

Cet appareil numérique de la classe B respecte toutes les exigences du Règlement sur le matériel brouilleur du Canada.

Japanese Notice

この装置は、情事処置装置等電波障害自主規制協議会（VCCI）の基準に基づくクラスBの電波障害低減装置です。この装置は、家庭環境で使用することを目的としています。この装置が携帯電話やテレビジョン受信機に近接して使用されると、電波障害を引き起こすことがあります。
取扱説明書に従って正しい取り扱いをして下さい。

Agency Requirements

Wireless Notices

In some situations or environments, the use of wireless devices may be restricted. Such restrictions may apply aboard airplanes, in hospitals, near explosives, in hazardous locations, etc.

If you are uncertain of the policy that applies to the use of this device, please ask for authorization to use it prior to turning it on.

Canadian Regulatory Wireless Notice

Operation is subject to the following two conditions: (1) this device may not cause interference, and (2) this device must accept any interference, including interference that may cause undesired operation of the device.

Agency Requirements

Exposure to Radio Frequency Energy

The Wireless Pack Radio Product is designed to comply with the following national standard regarding exposure of human beings to radio frequency electromagnetic energy:

- American National Standards Institute
(ANSI IEEE. C95. 1-1992)

The long-term characteristics or the possible physiological effects of Radio Frequency Electromagnetic fields have not been evaluated by UL.

CAUTION: Users concerned with the risk of Radio Frequency exposure may wish to limit the duration of their calls and to position the antenna as far away from the body as is practical.
