

GLOBETROTTER

High speed GPRS Wireless Internet Card

Universal Tri-Band
GPRS | GSM PC-Radio Card

Manual in D | E | F | I | NL on CD

**GLOBE
TROTTER**
BY OPTION

Register with Option	3
Introduction	4
Installation	9
Getting Started	13
Troubleshooting	21
Agency Requirements	24
Safety Information	29

WARNING! DO NOT INSERT CARD!

Registering your card is of great value to you.

As soon as you register, you will qualify for:

- > validation of warranty, which includes repair or replacement if faulty
- > after-sales customer care
- > advanced bulletins on product updates and software upgrades

During the installation process, you will be requested to fill in your personal details and fax them to Option.

You also have the alternative to register on-line directly at:
<http://registration.option.com>

Congratulations on your purchase of the GlobeTrotter Universal Tri-Band GPRS/GSM PC-radio Card

GlobeTrotter is the ultimate solution to provide high performance mobile wireless functionality for Laptops, Notebooks, and Handheld PDA's enabling users to make telephone calls, browse the Internet, send and receive e-Mails, with SIM and Phonebook management seamlessly integrated with Microsoft Outlook™.

The "Always On" feature of GPRS lends itself to real time remote connectivity and is ideal for the synchronisation of handheld and mobile devices with the office or home computer. GlobeTrotter is designed to support IPsec client software providing secure remote IP mobile access to corporate networks.

GlobeTrotter is a triple-band GPRS/GSM modem in the form of a PC Card. It plugs into compatible portable computers or other devices with a PC Card type II or III slot.

This guide describes how to install the Wireless Communication Manager (WCM) software on your PC and how to start using it. For more detailed information, consult the WCM Online Help Guide.

Contents of the sales package

In the sales package, you will find the following items:

- > GlobeTrotter GPRS/GSM PC Card
- > a CD-Rom containing the software and the Quick Start Guide in various languages
- > a leather wallet for the card

To overcome any installation and usage barriers and to enhance the user experience, the following documentation is also included:

- > **Quick Start Guide**, which gives the installation of the Wireless Communication Manager Software in a limited number of steps, and assists the user in making his/her first data or voice call
- > **Online User Manual**, which describes a number of common scenarios of use. The online User manual can be accessed at all times through the Help menu of the software.

System requirements

The GlobeTrotter requires:

- › an Intel compatible PC that runs Windows 98/ME, 2000, XP or a PDA with Windows CE 3.0,3.1 (Pocket PC 2000 & 2002)
- › 60 MHz Pentium-compatible CPU
- › 24 MB of RAM
- › 3 MB available space on Hard Disk
- › CD-Rom drive
- › PC Card (PCMCIA) Release 2.1, Type II or Type III card slot.

Network services

The GlobeTrotter GPRS/GSM PC Radio Card Modem operates on the EGSM 900, GSM 1800 and PCS 1900 cellular networks.

To use your GlobeTrotter, you must first activate an account with a GPRS/GSM network provider and have received a Subscriber Identity Module (SIM) card from the GPRS/GSM provider.

Some service providers may not provide all communications services. Contact your service provider for further information about the availability and details of the services in your home network.

Additional information may be required from your service provider to activate the GPRS functionality of the GlobeTrotter card such as:

- › User Name - if applicable
- › Password - if applicable
- › Access Point Name (APN)
- › IP Address - if not dynamic
- › DNS Address - if not dynamic

Communications software

When you run the installation program, the following programs will be installed on your computer:

- › Windows based telephony driver (TAPI compatible)
- › The Wireless Communication Manager (TAPI compatible)

THE OPTION WIRELESS COMMUNICATION MANAGER

The Wireless Communication Manager simplifies making and administering voice calls, SMS messaging and the configuration of GPRS settings for applications such as downloading e-mail or browsing the Internet.

WCM provides all voice call features found on mobile phones including registers of made calls. Calls can be made from the Phonebook.

The **WCM** application also incorporates a powerful SMS editor, message templates, and a viewer for reading SMS messages. Incoming and outgoing messages are listed in Outlook™-style directories. The application also offers many other facilities, including the automatic generation of SMS texts.

The **GPRS controller** gives users a quick and easy way of defining GPRS connection settings.

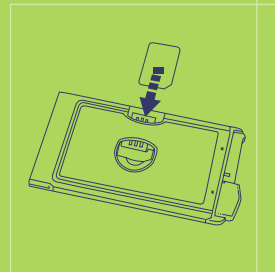
This section provides step-by-step instructions on how to install the GlobeTrotter PC Card on your PC.

NOTE: There are some slight differences in the installation process between Windows 98/ME and Windows 2000/XP. If the installation differs from the steps described in this section, follow the instructions on the screen.

If you want to quit the Setup program without installing or uninstalling, click **Cancel** and then **Exit Setup** to quit Setup. If you want to rerun the Setup program after having quit the installation before it was completed, follow the installation steps as if you were installing the program for the first time.

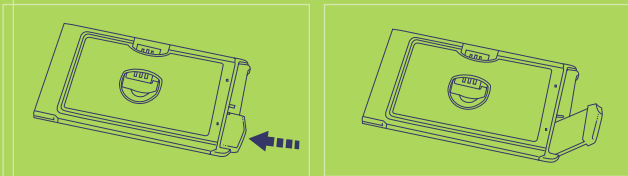
Inserting the SIM card in the GlobeTrotter card

- 1 Verify that you have a plug-in SIM card and locate the golden connector area on this SIM. Please make sure the golden connector is perfectly clean.
- 2 Look for the SIM connector on top of the GlobeTrotter card.
- 3 Slide the SIM card with the cut corner of the SIM to the centre of the GlobeTrotter, and with the golden connector area on it facing to the GlobeTrotter card.



Antenna

You need to eject the pop out antenna from the card in order to be able to establish a connection.



Installing GlobeTrotter and the Wireless Communication Manager

WARNING! DO NOT INSERT CARD!

If the card was already inserted, please remove it before starting the installation procedure.

It is advised to connect your PDA or PC to the mains, before starting the installation

1. Start **Windows**.
2. Close all applications.
3. Insert the CD-Rom into your computer's CD-Rom drive. If auto-insertion is enabled the setup program will start automatically.

4. If this does not happen, select the **Run** command from the **Start** menu.
5. Select the drive that contains the CD or type **D:\GTinst** (**D:** represents the CD-Rom drive).
6. Click **OK** to execute the file.
7. The GlobeTrotter installation wizard will guide you step-by-step through the various installation stages.
8. For some operating systems, it will be necessary to reboot the computer. Click the Reboot button when the installation wizard asks you to.
9. Insert the GlobeTrotter card into the PCMCIA slot of your PC when the installer asks you to.
10. Wait until the system has recognized the card.
11. Click **Next** to let the system detect the modem automatically.
12. Follow the steps of the 'New Hardware Wizard' and select 'GlobeTrotter GPRS PCMCIA Modem'
13. Click **OK** to install the WCM application software on your computer.
14. Enter your licence key. This number can be found on the back of the CD-box.
15. The software will automatically be copied into Program Files\OPTION\GlobeTrotter WCM. Another target folder can also be chosen during the installation process.

16. You will now be asked to register the product. Registration is required to benefit from the warranty and customer care.

By connecting to the Internet you can register online immediately at <http://registration.option.com>

If this is not possible, enter all details in the registration wizard and send the registration fax to the number indicated. Choose **Register Later** if you choose to register later. You will be able to start the registration from the appropriate button in the main interface.

17. At the end of the process, the message **Installation Completed** appears.

Uninstalling GlobeTrotter and the Wireless Communication Manager.

1. Go to the Control Panel of the operating system.
2. Open Add/Remove Programs.
3. To uninstall the GlobeTrotter card, select **GlobeTrotter Driver Suite** and click the **Remove...** button. Follow the steps of the uninstall wizard.
4. To uninstall the GlobeTrotter WCM application software, select **GlobeTrotter WCM** and click the **Remove...** button. Follow the steps of the uninstall wizard.

Starting the GlobeTrotter card.

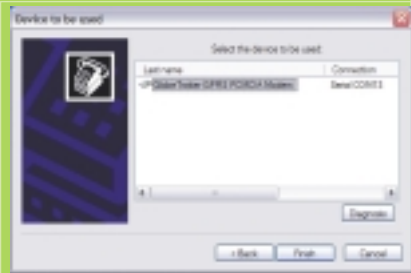
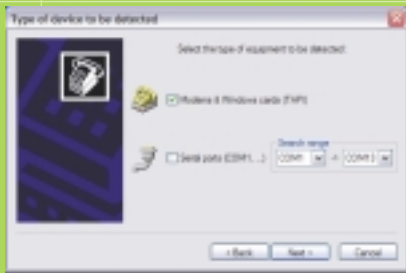
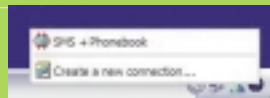
Slide the SIM card into the SIM card slot of the GlobeTrotter and insert the GlobeTrotter into the PC Card slot of your computer. It is recommended to insert the card in the top PCMCIA slot. You may have to enter the PIN (Personal Identity Number) code if the PIN code request is activated in the SIM card.

The PIN code is usually supplied with the SIM card. If you enter an incorrect PIN code three times in a row, you will need a PUK (Personal Unblocking Key) code to unblock the SIM card. If this doesn't work, contact your service provider.

Using the GlobeTrotter card for a DATA connection

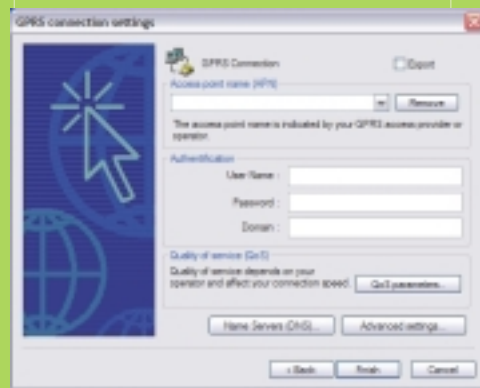
Warning! Some Service Providers use automatic DNS Server assignment. However if you can connect but have trouble opening a webpage we advise you to enter the DNS settings manually. Please contact your Service Provider to obtain the required DNS settings.

Depending on your network operator, a GPRS or GSM connection might already have been installed. If not, you will have to create a new connection following the next steps. Click on the GlobeTrotter controller icon in the systray (taskbar) and choose 'Create a new connection'.



When using the card for the first time, your GlobeTrotter will need to be detected.

Enter a name for your connection (e.g. My GPRS connection with Operator X) and proceed to the next installation screen. Fill in all the parameters of your GPRS connection. Enter the GPRS settings you received from your provider.



In **Quality of Service (QoS)** you can change the QoS parameters. See the help files for definitions of the QoS parameters.

In **Name Servers (DNS)** you can specify the DNS if required by your carrier.

In **Advanced settings** you can modify the card settings and the dial properties. Click **Finish**. You are now ready to start a GPRS connection.

Setting up a GSM connection is similar to setting up a GPRS connection, so please refer to the above steps.

All connections can be started from the WCM controller icon in the taskbar.

Using the GlobeTrotter card for SMS, Voice and Phonebook management.

During the installation of the WCM software a link is established with the Startup folder. WCM will subsequently start every time the computer is switched on. The WCM icon then appears in the task bar.

If the WCM software does not start automatically when the computer is switched on, or if the WCM program has been closed in the meantime, it can be started again in the Start menu.



Once the program has started the PIN code will be requested, if the PIN code request is activated on the card, in order to activate the Globetrotter card.

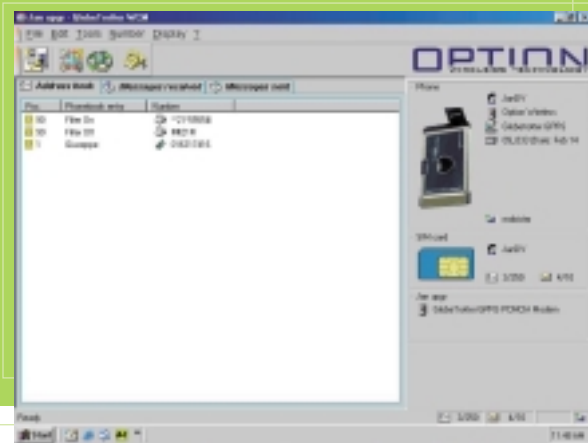
The card will subsequently be registered onto the network.

When opening the program, you will be prompted to choose an existing profile or create a new one.

This allows the use of the WCM software with different SIM cards or different GlobeTrotter cards.

Once the profile is selected all the information regarding the network used, the GSM network signal strength, and the contents of the SIM card are displayed in the WCM main interface window.

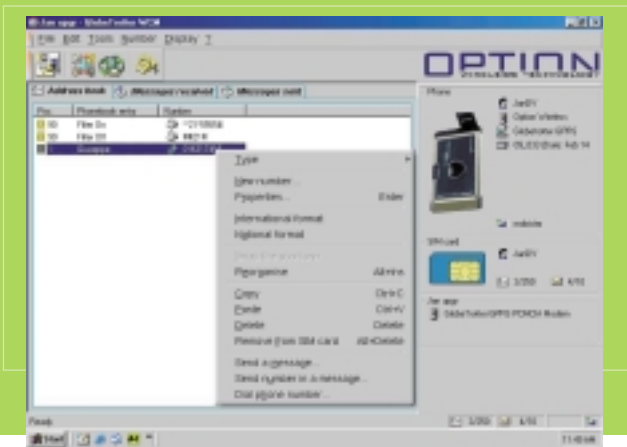
From the Address Book page in WCM, the user can send SMS messages, send the phone number in an SMS message, make a phone call to that number, add different phone numbers to a contact, etc.



A right click on a contact shows all the possibilities that the user has regarding that specific contact.

The WCM interface makes it easy to manage a phonebook, send and receive SMS messages and initiate a phone call.

The program will automatically read the contacts in Microsoft Outlook making them available in the WCM software for all the operations described above.



TRIPLE-BAND FUNCTIONALITY

The GlobeTrotter card is a triple-band GPRS/GSM card: it operates in GSM 900, DCS 1800 and PCS 1900 networks.

Automatic selection is supported by the firmware for only two bands: 900/1800 and 900/1900. Switching between frequencies has to be done manually. To set the band mode go the Voice dialer (function F2) in the WCM software.

When the dialer is opened the current setting is displayed.

Select the desired frequency. If you are in North America be sure the band mode is set to GSM900/PCS1900.

Singal strength affecting cellular transmissions

You need to be in an area that is covered by a GPRS/GSM network to use the GlobeTrotter card.

Cellular networks differ from landline networks in many ways. For example, traffic loads and the strength of radio singals may vary in a cellular network and cause handovers.

You will have the best data performance in locations where the signal is strong.



Accessories

HEADSET

In order to make and receive voice calls with the GlobeTrotter card, you need the headset.

You can order it online at www.option.com

The headset plugs into the connector at the end of the GlobeTrotter card.

Beware to only purchase headsets compatible with the GlobeTrotter card.



EXTERNAL ANTENNA CABLE

You can improve the reception and operation range of your GlobeTrotter card by using an External Antenna.

It can be connected straight into the radio connector at the end of the GlobeTrotter PC Card.



This section points out the basic problems that could occur when you are installing and using the card. There is a list of symptoms and possible actions you can take in any of the following situations below.

Not enough disk space for installation.

There is not enough space to complete the installation on the selected drive. Select another drive for installation or delete unnecessary files to free up additional disk space.

If there are several hard disk drives in the system and you decide to install the program on a drive other than the one where the Windows system files are located, disk space is required on both drives. The program will always need to place some files in the Windows directory.

Setup does not accept the target directory.

The program can only be installed on a local drive.

If the path to the directory is over 80 characters, it will not be accepted. Select another directory or shorten the names of the subdirectories.

The GlobeTrotter card cannot be installed or used.

The Interrupt Request (IRQ) resources may be in conflict. Check the GlobeTrotter resources from **Control Panel/System/Hardware/Device Manager/Modems/GlobeTrotter GPRS PCMCIA Modem/select Properties/Resources**. If there is a resource conflict, consult the Windows online help on changing the resource settings.

The GlobeTrotter card is not properly inserted. Make sure that the PC Card slot of the computer is functioning properly and that the GlobeTrotter driver is installed (in Control Panel > Modems).

Also make sure that the SIM card has been inserted.

**The network signal is weak,
and you also suspect interference from the laptop.**

In addition to the regular antenna attached to the GlobeTrotter card, an external antenna may be used. Attach it to the GlobeTrotter and the call quality may improve.

Refitting the antenna

When the antenna becomes disconnected, refit it as follows:



Federal communications commission notice

This equipment has been tested and found to comply with the limits for a Class B digital device, pursuant to Part 15 of the FCC Rules. These limits are designed to provide reasonable protection against harmful interference in a residential installation. This equipment generates, uses, and can radiate radio frequency energy and, if not installed and used in accordance with the instructions, may cause harmful interference to radio communications. However, there is no guarantee that interference will not occur in a particular installation. If this equipment does cause harmful interference to radio or television reception, which can be determined by turning the equipment off and on, the user is encouraged to try to correct the interference by one or more of the following measures:

- Reorient or relocate the receiving antenna.
- Increase the separation between the equipment and receiver.
- Connect the equipment into an outlet on a circuit different from that to which the receiver is connected.
- Consult the dealer or an experienced radio or television technician for help.

MODIFICATIONS

The FCC requires the user to be notified that any changes or modifications made to this device that are not expressly approved by Option may void the user's authority to operate the equipment.

CABLES

Connections to this device must be made with shielded cables with metallic RFI/EMI connector hoods in order to maintain compliance with FCC Rules and Regulations.

Declaration of Conformity for products marked with the FCC logo - United States only

This device complies with Part 15 of the FCC Rules. Operation is subject to the following two conditions: (1) this device may not cause harmful interference, and (2) this device must accept any interference received, including interference that may cause undesired operation.

For questions regarding your product or FCC declaration, contact:

Option | Kolonel Begaultlaan 45 | 3012 Leuven | Belgium
www.option.com

To identify this product, refer to the Part, Series, or Model number found on the product.

Canadian Notice

This Class B digital apparatus meets all requirements of the Canadian Interference-Causing Equipment Regulations.

Avis Canadien

Cet appareil numérique de la classe B respecte toutes les exigences du Règlement sur le matériel brouilleur du Canada.

WIRELESS NOTICES

In some situations or environments, the use of wireless devices may be restricted. Such restrictions may apply aboard airplanes, in hospitals, near explosives, in hazardous locations, etc.

If you are uncertain of the policy that applies to the use of this device, please ask for authorization to use it prior to turning it on.

Canadian Regulatory Wireless Notice

Operation is subject to the following two conditions: (1) this device may not cause interference, and (2) this device must accept any interference, including interference that may cause undesired operation of the device.

EXPOSURE TO RADIO FREQUENCY ENERGY

This PCMCIA card has been tested in different Notebooks for compliance with the SAR requirements.

The maximum measured body SAR value (averaged over a mass of 1 g) is 0.8 W/kg for GSM1900, which is well below the limit of 1.6 W/kg.

For safe and efficient use the user should keep the antenna of the card at a minimum distance of 1 cm away from his body.

CAUTION: Users concerned with the risk of Radio Frequency exposure may wish to limit the duration of their calls and to position the antenna as far away from the body as is practical.

EUROPEAN UNION NOTICE

Products bearing the CE marking comply with the R&TTE Directive (1999/5/EC), EMC Directive (89/336/EEC) and the Low Voltage Directive (73/23/EEC) issued by the Commission of the European Community.

Compliance with these directives implies conformity to the following European Norms (in parentheses are the equivalent international standards and regulations):

- EN 301 489 - Electromagnetic compatibility.
- EN 301 511 - Efficient use of the radio frequency spectrum.
- EN 60950 (IEC 60950) - Product Safety.

This product may be used in all EU and EFTA countries.

Read these simple guidelines. Breaking the rules may be dangerous or illegal. Further detailed information is given in this manual.

Driving

Do not use the GlobeTrotter while driving; park the vehicle first.

Interference

All wireless devices may get interference which could affect performance.

Do not use in hospitals

Follow any regulations or rules. Do not use near medical equipment.

Do not use in airplane

Wireless devices can cause interference. Using them on airplanes is illegal.

Do not use near refueling points

Do not use the device at a refueling point. Do not use near fuel or chemicals.

Use sensibly

Do not touch the antenna unnecessarily.

Use qualified service

Do not attempt to disassemble GlobeTrotter. Doing so will void warranty. Service should only be performed by Authorized Service Centres.

Accessories

Use only approved accessories. Do not connect incompatible products.

Emergency calls

NOTE: Voice calls, including emergency calls, can ONLY be made using a compatible Option headset.

To make an emergency call:

- Make sure that the GlobeTrotter card is properly inserted in the PC Card slot and that the headset is connected to the card. Some networks may require that a valid SIM card is inserted in the card.

Liquids

Do not expose your card to rain, or spill beverages on it.

Extreme temperatures

Do not expose the card or the antenna to extreme temperatures, below -25 or over +70 degrees Celsius.

Travelling

Handle the card with care while travelling. It is recommended to remove the card from the laptop and put it in the protective leather wallet.



FEATURES

- › Tri-band PC Radio Card suitable for use on GSM networks worldwide: EGSM900, GSM1800, PCS1900
- › GSM Voice capability as well as GSM and GPRS Data connectivity
- › GPRS Class B, Type 1 GPRS MT
- › Multislot Class 10 GSM 05,02
(4 slots receive, 2 slots transmit, 5 maximum active)
- › Multitasking: data can be transferred whilst monitoring for GSM Voice calls and simultaneously reporting network coverage
- › Dual-voltage card: 3.3V & 5V
- › Integral antenna: robust, retractable and flexible, user replaceable with "autosense" technology
- › Wireless Communication Manager, (WCM): SMS and Phone utilities
- › GPRS SMS GSMS Supported
- › Memory: 16 Mb Flash technology for easy upgrade
- › Dimensions / Weight: 90 x 54 x 5 mm / 45 gm
- › Optional Accessories: Quality Headset; External Tri-band antenna

SYSTEM REQUIREMENTS

- › Windows 98/ME, 2000, XP, CE 3.0, 3.1
- › Other OS supported: Please check on our website
- › Type II PC-Card slot
- › 24Mb RAM



WA1950-100011

