

# GLOBETROTTER MOBILITYMANAGER

MANUAL IN CN / D / E / F / I / NL / P ON CD

## CONTENTS

Register with Option	3
Introduction	4
System Requirements	5
Installation	8
Getting Started	10
Trouble shooting	33
Safety Information	34

**Warning! Do not insert the card!****Registering your card is of great value to you.**

As soon as you register, you will qualify for:

- > Validation of warranty, which includes repair or replacement if faulty
- > After-sales customer care
- > Advanced bulletins on product updates and software upgrades

During the installation process, you will have the possibility to register online or via e-mail.

You may also register on-line at:

**[http://www.option.com/registration/4\\_3\\_registration.shtml](http://www.option.com/registration/4_3_registration.shtml)**

Congratulations on your purchase of the Option GlobeTrotter card.

GlobeTrotter together with the GlobeTrotter Mobility Manager software is the ultimate high performance solution for providing mobile wireless connectivity to Laptops and Notebooks. The GlobeTrotter solution enables users to browse the Internet, send and receive e-Mails, send and receive SMS text messages and all with SIM management seamlessly integrated with Microsoft Outlook™.

The technology in your Option GlobeTrotter card supports real time remote connectivity and is ideal for the synchronization of mobile devices with the office or home computer. GlobeTrotter is designed to support IPsec client software providing secure remote IP mobile access to corporate networks.

This guide describes how to install the GlobeTrotter Mobility Manager (GTMM) software on your PC and how to start using it. For more detailed information, consult the GTMM Online Help Guide.

#### Contents of the sales package

In the sales package, you will find the following items:

- > Option GlobeTrotter card
- > A CD-Rom containing the software

To overcome any installation and usage barriers and to enhance the user experience, the following documentation is also included:

- > This **Quick Start Guide**, which gives the installation of the GlobeTrotter Mobility Manager Software in a limited number of steps, and assists the user in making his/her first data call
- > **Online User Manual**, which describes a number of common usage scenarios. The online User manual can be accessed at all times through the Help menu of the software.

The GlobeTrotter Mobility Manager software requires:

#### Processor

- > Client (a computer not working in a server capacity): Min. 90-megahertz (MHz) Intel Pentium II-class processor or higher
- > Server (a computer working in a server capacity): Min.133-MHz Intel Pentium-class processor

#### Operating System

- > Windows XP Professional
- > Windows XP Home Edition
- > Windows 2000

#### Memory

- > Client: 64 megabytes (MB) of RAM, 96 MB recommended
- > Server: 128 MB of RAM, 256 MB recommended

#### Hard Disk

Min. 40 MB for installation of SW & Drivers

#### Display

800 x 600 or higher-resolution display with 256 colors

#### Input Device

Microsoft mouse or compatible pointing device

**Other requirements**

- > Microsoft Internet Explorer 6.00 or later
- > The latest Windows service packs and critical updates from the Windows Update site.
- > The target system may not have any version of the 'Funk Odyssey' WLAN client installed, otherwise the installation will fail

Please refer to the GlobeTrotter datacard Product Sheet for datacard system requirements.

**Network services**

To use your Option GlobeTrotter card, you must first activate an account with a mobile phone Service Provider and have received a Subscriber Identity Module (SIM) card.

Often the GlobeTrotter is supplied as a package with an airtime agreement. If you do not already have an airtime agreement, please ask your supplier about obtaining one for a compatible network. Please refer to the GlobeTrotter datacard Product Sheet which will detail the types of network and services it is compatible with.

Some service providers may not provide all communications services. Contact your service provider for further information about the availability and details of the services in your home network.

Additional information may be required from your service provider to activate the data functionality of the Option GlobeTrotter card such as:

- > User Name - if applicable
- > Password - if applicable
- > Access Point Name (APN)
- > IP Address - if not dynamic
- > DNS Address - if not dynamic

**Communications software**

When you run the installation program, the following programs will be installed on your computer:

- > Windows GlobeTrotter device drivers
- > The GlobeTrotter Mobility Manager

**The GlobeTrotter Mobility Manager**

The GlobeTrotter Mobility Manager GTMM simplifies SMS messaging and the configuration of GPRS settings for applications such as downloading e-mail or browsing the Internet. It also gives the possibility to manage a WLAN connection. The **GTMM** application incorporates a powerful SMS editor and a viewer for reading SMS messages. Incoming and outgoing messages are listed in Outlook™-style directories. The **Setup page** gives users a quick and easy way to set up any type of connection (GSM, GPRS or 3G).

The **WLAN page** gives users a quick and easy way to scan and connect on a WLAN network.

This section provides step-by-step instructions on how to install the Option GlobeTrotter card on your PC.

NOTE: There are some slight differences in the installation process between Windows 2000 and XP Pro/Home Edition. If the installation differs from the steps described in this section, follow the instructions on the screen.

If you want to quit the Setup program without installing or uninstalling, click **Cancel** and then **Exit Setup** to quit Setup. If you want to return to the Setup program after having quit the installation before it was completed, follow the installation steps as if you were installing the program for the first time.

#### Installing the Option GlobeTrotter card and the GlobeTrotter Mobility Manager

##### WARNING! DO NOT INSERT THE CARD!

It is advised to connect your PC to the mains, before starting the installation

1. Start **Windows**.
2. Close all applications.
3. Insert the CD-Rom into your computer's CD-Rom drive. If auto play is enabled the setup will start automatically.
4. If this does not happen, select the **Run** command from the **Start** menu.
5. Select the drive that contains the CD. Go to **D:\MobilityManagerSetup\*.exe** (**D**: represents the CD-Rom drive).
6. Click **OK** to execute the file.
7. Select the language you want to install the program in.
8. The installation will start.
9. The software will automatically be copied into Program Files\OPTION\Mobility Manager. Another target folder can also be chosen during the installation process.

10. At the end of the installation you will have to reboot the PC and if you have selected automatic start up, the GTMM application will start up after the reboot.
11. Insert the Option GlobeTrotter card into the PCMCIA slot of your PC.
12. Wait until the system has recognized the card.
13. You will now be asked to register the product.  
Registration is required to benefit from the warranty and customer care. By connecting to the Internet you can register online immediately at [http://www.option.com/registration/4\\_3\\_registration.shtml](http://www.option.com/registration/4_3_registration.shtml)

Choose **Cancel** if you want to register later. You will be able to start the registration from the help menu in the main interface. When you click cancel each time you start GTMM you will be asked to register.

#### Uninstalling the Option GlobeTrotter card and the GlobeTrotter Mobility Manager

1. Go to the Control Panel of the operating system.
2. Open Add/Remove Programs.
3. To uninstall the GlobeTrotter card and the GTMM software, select **GlobeTrotter Mobility Manager** and click the **Remove...** button. Follow the steps of the uninstall wizard.

### Starting the Option GlobeTrotter card.

Slide the SIM card into the SIM card slot of the Option GlobeTrotter card and insert the Option GlobeTrotter card into the PC Card slot of your computer. It is recommended to insert the card in the top PCMCIA slot. You may have to enter the PIN (Personal Identity Number) code if the PIN code request is activated in the SIM card. The PIN code is usually supplied with the SIM card. If you enter an incorrect PIN code three times in a row, you will need a PUK (Personal Unblocking Key) code to unblock the SIM card. If this doesn't work, contact your service provider.

### Using the GlobeTrotter card for SMS and Phonebook management

During the installation of the **GlobeTrotter Mobility Manager** software a link is created in the Startup folder. GlobeTrotter Mobility Manager will subsequently start every time the computer is turned on. The GlobeTrotter Mobility Manager icon then appears in the task bar. If the GlobeTrotter Mobility Manager software does not start automatically when the computer is switched on, or if the GlobeTrotter Mobility Manager program has been closed in the meantime, it can be started again from the Start menu.

Once the program has started, the **PIN code** will be requested (if the PIN code request is activated on the SIM card) in order to activate the Globetrotter card. The card will subsequently be registered onto the network.

If the PIN code request has been disabled, the GlobeTrotter card will be registered on the network as soon as it is powered on.

At the end of the network registration the GTMM interface will open and you are ready to start a connection.



### The GlobeTrotter Mobility Manager Home Page



The Home Page is the place where you have a complete overview on everything that the GlobeTrotter Mobility Manager can offer.

From the Home Page you can:

- > Access every section of GlobeTrotter Mobility Manager (the Toolbar)
- > Access every subsection (the Navigation bar)
- > View the status of the registered mobile network and Wireless LAN
- > View the indication of unread SMS
- > Quick launch a connection

In case you have unread SMS, these will be shown in the GTMM Home Page. The indicator will show you the number of unread messages.

From the Home Page, you have the possibility to connect directly to an available network. Once you have created or imported a connection profile, this will be listed on the Home Page if the network (GSM/GPRS/UMTS/WLAN) is available.

## The SMS Centre



You can access the SMS center:

- > From GlobeTrotter Mobility Manager Home Page by clicking:
  - the SMS button on the top toolbar
  - the icon next to the “You have received n SMS messages” text
  - the SMS icon on the upper left navigation bar
- > By clicking the “SMS envelope” icon in the systray. This is as a result of the system having recognized that a new SMS message had arrived.

The **SIM** or **Outlook** address book will be shown when clicking on the respective icon.

By clicking on the Synchronize button (icon with the two arrows) you can synchronize your Outlook contacts with your GTMM contacts. The Synchronize button will force GTMM to (re)import the Outlook contacts. This action deletes all the current contacts held in GTMM. This is useful when you have updated Outlook contacts independently of GTMM.

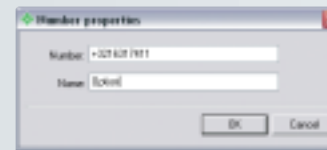
You can read, create, reply, forward and delete an SMS by clicking the icons on the SMS Message Management Bar, which is located at the bottom of the GlobeTrotter Mobility Manager SMS Page

## The Phone book

The available phonebooks are:

- > SIM Phonebook
- > Outlook contacts (if Outlook is present)

Contacts are read on the fly, which means that no duplicate phonebooks or synchronization is necessary. The software will operate directly on the SIM and on the Outlook contacts. You can edit the name or phone entry in the SIM contacts by right click on the SIM contacts and select new or by going to 'File/New/SIM contact'. Then you get the following popup window where you can edit your contact.



You can edit the name or phone entry in the Outlook contacts by going to 'File/New/Outlook contact'. Then you get the standard Outlook window to make a new contact.

You can also create new, cut, copy paste either the SIM contacts or the Outlook contacts by clicking on the icons in the “SMS Message Management Bar”.



## Setup

The Setup page allows you to create, edit and configure a GPRS, GSM or UMTS connection. Also, when a connection is present, this can be started from there.

In the top of the screen you have a list of all available connections.

### Using the GlobeTrotter card for a DATA connection

**Caution!** Some Service Providers use automatic DNS Server assignment.

However if you can connect but have trouble opening a webpage we advise you to enter the DNS settings manually. Please contact your Service Provider to obtain the required DNS settings.

Depending on your network operator, a GPRS, GSM or UMTS connection might already have been installed. If not, you will have to create a new connection following the next steps. Click on **Setup**. Click on **New** to create a new connection.



You have to select which type of connection you want to set up.



You choose either to import an existing connection or to set up a connection manually.



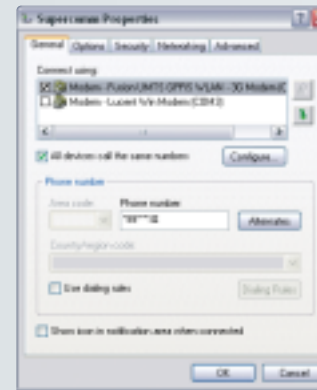
When you set up your connection manually **right-click** on the connection and select **rename**. Enter a name for your connection (e.g. “My GPRS connection with Operator X”) and fill in all the parameters of your GPRS connection. Enter the GPRS/UMTS settings you received from your provider.

In **Name Servers (DNS)** you can specify the DNS if required by your carrier.

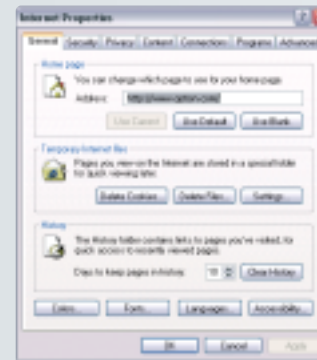


In **PDP type** you can specify the PDP type. You can choose between IP and PPP. If required by your carrier you have to fill in the address. (Typically the connection is type **IP**).

In **Dial up Network** you can modify the card settings and the dial properties.



In **Internet** you can modify the internet properties.



In **Quality of Service (QoS)**, you can change the **QoS** parameters. See the help files for definitions of the **QoS** parameters.

**CAUTION! Do not change the QoS parameters unless your provider explicitly informs you to do so.**



Click **Save**. You are now ready to start a 3G/GPRS connection!

Setting up a GSM connection is similar to setting up a GPRS connection, so please refer to the above steps.

All connections can be started from the GTMM controller icon in the taskbar.

### The Connection states tab



Once that you are connected, the network status tab will show the connection statistics



Which means:

- > Connected with (GSM/GPRS/UMTS)
- > Duration of the connection
- > Total volume of data transferred
- > Sent and received data volume
- > Current speed (upload and download)
- > Top speed (upload and download)

### Start a connection

A connection can be started from:

- > The connect button in one of the GTMM connectivity tabs
- > From the Windows icon tray controller > right-click > "Connect using" for every available connection
- > From the Windows icon tray controller > left-click > "Connect" for the default connection

### WLAN (only available on cards supporting WLAN)



#### First time using WLAN

You can access the WLAN page by clicking:

- > The WLAN button on the top toolbar
- > The WLAN icon on the upper left navigation bar
- > WLAN in the view menu

The WLAN page allows you to create, edit and configure a WLAN connection. Also, when a connection is present, this can be started from there. In the top of the screen you have a list of all available connections.

#### Managing Profiles

The configuration dialogue for WLAN profiles works like the configuration dialogue for UMTS or GSM connections. The user selects the desired profile from the list at the top and can modify the different parameters in the panes in the middle. Some common operations are available in the tool bar at the bottom.

- > To create a new profile, the user clicks the button “New” at the bottom of the configuration screen. All settings in a new profile are set to their default values until changed by you.
- > By clicking “Delete” the selected profile is removed from the list. A profile may be deleted only if it’s not currently being used for communication.
- > The user can save any changes to the current pane (including any changes to other panes) immediately by clicking “Save”. This button is only available when the data on the current or another pane has been changed.

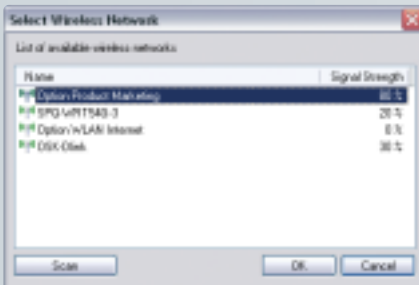
NOTE: If you are using the profile that has been modified then the changes will not come into effect until you have stopped the connection and restarted it.

## WLAN Settings

This group of settings determines the communication parameters used on the air interface. It's shown in a separate tab in the WLAN configuration dialogue. If an authenticated connection to a wireless network is required, additional parameters are needed that may interact with the parameters described in this section.



- > The user may either enter the network name or select it from a list which was generated by clicking the **Scan** button. A network might not broadcast its name for security reasons and so will not appear in the list, you will need its details from your IT administrator.



- > The list of available networks is not updated automatically while this dialogue is open, you must click “Scan”. While the scan is active a progress dialogue is shown. Once the scan for networks is complete, all networks found are added to the pop-up menu of available networks. For each network the following information is shown:
  - Name of network
  - Signal strength
- > Selecting a network from the pop-up menu assigns the network's name as well as the network mode and the communication channel for point-to-point networks.

## User Information

For WLAN networks that require user authentication you must define the user data within the WLAN profile. The same information is used by all the supported authentication methods. Additional WLAN profiles should be created if you want alternative user data.

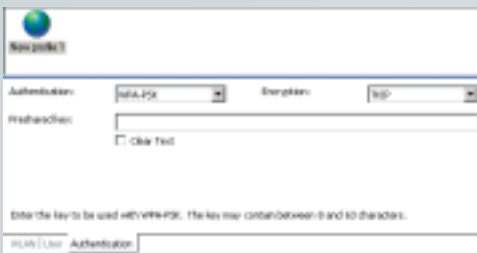
- > The user enters his data in the dialogue shown below. User data is only used when authentication takes place. However, these settings can be entered even if the currently selected authentication method does not use them.
- > The field for entering a user name holds the user's account name used for logging into the wireless network. This usually different from the user's real name (e.g. “jdoe17” vs. “John Doe”). For a new profile the user name is set initially to the account name of the current user.



- > There are two fields for setting a password in a profile. The first determines whether the password is contained in the profile or taken from the user's account information. Its possible values are "Prompt for password" and "Use password". The field for entering a password and the corresponding check box are active only when "Use password" is selected.
- > The field for the password does not show the password in clear text but as a sequence of asterisks. As long as "Clear text" is checked, the password is displayed in clear text. The check box is initially not marked.
- > The field for the user's certificate displays the "friendly name" of the certificate selected by the user. This field is initially empty (i.e. no certificate is preselected). A certificate is selected in the dialogue shown below. This list of certificates shows all certificates for the current user. The list of certificates contains only usable certificates, i.e. expired or are not yet valid certificates are not shown.

### Authentication

Especially on wireless networks it is easy to gain physical access to the network. Hence it is important to make sure that only the intended group of people is able to use the network and any resources attached to it. The identity of the users has to be checked and this is called authentication.



- > Different authentication methods (including "no authentication") are supported. Each method requires different authentication parameters. The user's credentials are taken from the corresponding page (see "User Information") and are not specific to a particular method of authentication. If the user selects a different method of authentication, the user's personal data are reused without resetting or changing it.
- > Communication over the air interface is usually encrypted. For some authentication methods encryption of network traffic is required and cannot be turned off. If such an authentication method is selected, the appropriate encryption method is activated as well.
- > The supported methods of authentication are "Open", "Shared", "WPA-PSK", and "WPA".
- > The method of encryption is selected from a drop down list (e.g. None, WEP, TKIP, and AES). This list is only available when it is allowed for by the selected method of authentication. The dependencies between authentication method and encryption scheme are shown here:

### Open

Open authentication lets users attach to networks quickly as there is no access control and encryption may be turned off. The amount of configuration is therefore minimal. This mode is ideal for an ad-hoc network created for instance during a meeting to exchange data or collaborate on a document. If encryption is set to "None", the fields for entering WEP keys are hidden.

### Shared

Shared authentication using WEP encryption provides weak security. If this method has been selected, the user can either enter four shared keys.

- > The user can enter up to four different WEP keys. All entered keys must be of the same length or the configuration is invalid. If the configuration is invalid, the triggers a warning.

- > The user can enter a key either as a sequence of hexadecimal digits or as a string of characters as defined by the format buttons above the key fields.
- > As long as the user enters a key and the key's length is not correct, an appropriate warning is shown.

#### WPA-PSK

If the user selects authentication via WPA-PSK, he has to enter a so-called pre-shared key. Such keys contain between 8 and 63 characters. The user may enter these characters in an appropriate password field. The text of the key is shown masked unless the check box "Clear text" is turned on.

**Note** WPA-PSK is a stronger encryption method than WEP, users are advised to use WPA-PSK whenever possible. The amount of configuration is essentially the same while WPA-PSK is more secure without the need for a dedicated authentication server.

#### WPA-PSK

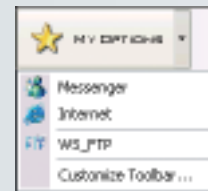
On the WPA settings pane, the user selects the method of authentication used when the device communicates with a RADIUS server. RADIUS servers are typically used in a corporate environment.

- > The method of authentication is selected from the "Main Protocol" pop-up menu. The following bullets describe in more detail additional parameters that might be necessary for the different methods:
  - **EAP/LEAP** This protocol does not use any additional parameters.
  - **EAP/PEAP** This protocol uses certificates for authentication. By setting the appropriate check box, the user may request a verification of the server's certificate.
  - **EAP/SIM** This protocol does not use any additional parameters. The user's SIM must be present when he wants to attach to a WLAN network. Usually the user enters the SIM-PIN when the main application is started.

If the user did not enter the SIM-PIN when the main application started, the main application prompts the user for the SIM-PIN using the usual dialog for entering a SIM. The main application can simply check whether the SIM-PIN is needed when the user tries to open a connection with EAP/SIM as its authentication method and prompt the users as appropriate.

- **EAP/TokenCard** This protocol does not need any additional parameters.
- **EAP/TLS** This protocol uses certificates for authentication. The user must select a personal certificate for this method to work. If there is no certificate selected, this triggers a warning. The only additional parameter for this method is whether the server's certificate should be verified.
- **EAP/TLS** This protocol uses a certificate for authentication.

#### My Options



Using the GTMM **My Options** button you can add shortcuts to your favorite applications. The drop down list gives immediate access to all applications that you have added. You can consider **My Options** button as an extension of the main toolbar. From the menu View > Customize Toolbar it's possible to choose which buttons you want to appear in the Toolbar and in the My Options list. Or you can also do it in 'My Options / Customize Toolbar...'

### Configuration settings

The configuration tabs are accessible from:

- > GTMM controller > Left Click > Settings > Configuration
- > Menu bar > Tools > Configuration

### Airplane mode

Airplane mode allows the user to safely use other functions of a wireless device (such as WLAN functions) on an airplane during flight. All Option GlobeTrotter cards together with the Mobility Manager software will support airplane mode.

**ONLY THE FIRST TIME** that the software is started and **a card is detected** the following pop up will appear:



- a) If the user choose <Enable Airplane Mode>, the card will be powered down. Therefore, as specified into the pop up, the card will not register and the user will not be able to make an Internet dial up connection or send/receive SMS. In the network status pane, a message will remind the user that Airplane Mode is enabled. The message will be shown every time that the GPRS radio is off (FOR CARDS SUPPORTING AIRPLANE MODE!)



- b) If the user chooses <Disable Airplane Mode>, then the GlobeTrotter datacard will behaviour normally. It will just register after the insertion of the PIN and it will allow connections and messaging.

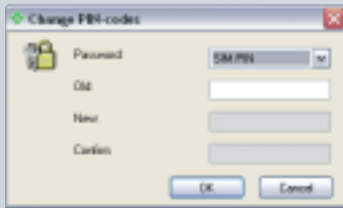
Important note for GlobeTrotter COMBO EDGE card users:

In the GlobeTrotter COMBO EDGE card the GSM radio is by default off. You will need to manually turn the radio on. You can do this via:

- a) GTMM > Tools > Settings > Airplane Mode (or controller “Right click” > Settings > Airplane Mode)
- b) Controller> “Right click” > Enable GPRS Radio (or Tools > Enable GPRS Radio).



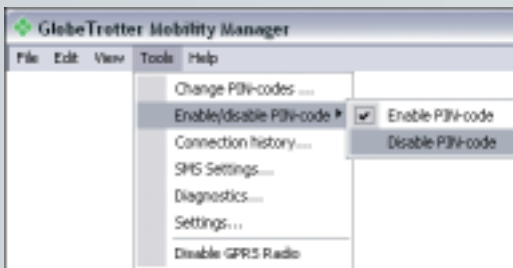
## Security



The following passwords can be changed:

- > SIM PIN
- > SIM PIN<sub>2</sub>

Change a password: the old password must be entered and the new password is entered twice.



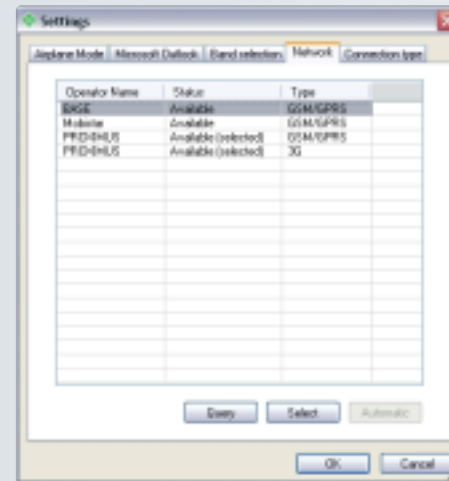
PIN code:

If PIN-code is enabled, PIN must be entered any time a new connection to the network is initiated after the device has been turned off.

If PIN-code is disabled, you don't need to give in the PIN-code after the device has been turned off.

## Network operator selection

The network operator selection window displays a list of available networks and selects the chosen network provider from the list.



To check the current settings and read the current list of networks, click **Query**. The list displays all available networks. The operator's status is shown in the second column. To register with a different operator, highlight the Operator name, click **Select** and click **OK**. Selecting an operator switches the GlobeTrotter to manual registration mode; it will try to register with the selected operator only. To go back to automatic registration, you must click **Automatic**.

### Diagnostic Utilities

A general diagnostic tool which will check the basic settings like installation, network availability, signal strength...



Connection History, another advanced diagnostic utilities is accessible from within GTMM.

This section points out the basic problems that could occur when you are installing and using the card. There is a list of symptoms and possible actions you can take in any of the following situations below.

#### Not enough disk space for installation.

There is not enough space to complete the installation on the selected drive. Select another drive for installation or delete unnecessary files to free up additional disk space. If there are several hard disk drives in the system and you decide to install the program on a drive other than the one where the Windows system files are located, disk space is required on both drives. The program will always need to place some files in the Windows directory.

#### Setup does not accept the target directory.

The program can only be installed on a local drive. If the path to the directory is over 80 characters, it will not be accepted. Select another directory or shorten the names of the subdirectories.

#### The GlobeTrotter card cannot be installed or used.

The Interrupt Request (IRQ) resources may be in conflict. Check the GlobeTrotter resources from **Control Panel/System/Hardware/Device Manager**.

If there is a resource conflict, consult the Windows online help on changing the resource settings.

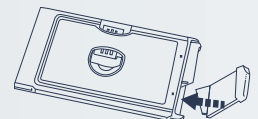
#### The GlobeTrotter card is not properly inserted.

Make sure that the PC Card slot or the computer is functioning properly and that the GlobeTrotter drivers are installed (In Control Panel > Ports).

Also make sure that the SIM card has been inserted.

#### Refitting the antenna (Only for cards with replaceable antenna's)

When the antenna becomes disconnected, refit it as follows:



## 34 SAFETY INFORMATION

Read these simple guidelines. Breaking the rules may be dangerous or illegal. Further detailed information is given in this manual.

**Driving:** Do not use the GlobeTrotter while driving; park the vehicle first.

**Interference:** All wireless devices may get interference, which could affect performance.

**Do not use in hospitals:** Follow any regulations or rules. Do not use near medical equipment.

**Do not use in airplane:** Wireless devices can cause interference. Using them on airplanes is illegal.

**Do not use near refueling points:** Do not use the device at a refueling point. Do not use near fuel or chemicals.

**Use sensibly:** Do not touch the antenna unnecessarily.

**Use qualified service:** Do not attempt to disassemble GlobeTrotter. Doing so will void warranty. Service should only be performed by Authorized Service Centers.

**Accessories:** Use only approved accessories. Do not connect incompatible products.

**Liquids:** Do not expose your card to rain, or spill beverages on it.

**Extreme temperatures:** Do not expose the card or the antenna to extreme temperatures, below -25 or over +70 degrees Celsius.

**Traveling:** Handle the card with care while traveling. It is recommended to remove the card from the laptop.

