



Safety manual:

Option Globetrotter Modules

*OPTION WIRELESS Technologies, Gaston Geenslaan 14, B-3001 Leuven
Tel +32 16 317 411 Fax +32 16 207 164 <http://www.option.com>*

Option Confidential



About this document

Overview and Purpose

This document describes the safety measurements that have to be taken into account when using a product with an embedded Option module.

Confidentiality

All data and information contained or disclosed by this document is confidential and proprietary of Option NV, and all rights therein are expressly reserved. By accepting this document, the recipient agrees that this information is held in confidence and in trust and will not be used, copied, reproduced in whole or in part, nor its contents revealed in any manner to others without prior and written permission of Option NV

Version History

Date	Release	Version	Author(s)	Revision(s)	Remarks	Phase
15/09/05	1.0 – Draft	1	RoelT		Initial version	1.0.0
5/01/07	2.0 -	1	JoeriB		Adaption for Scorpion	

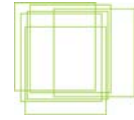
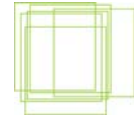


Table of contents

1. Introduction.....	3
2. Safety Measurements.....	3
▪ General recommendations for use.....	3
▪ Extreme temperatures.....	3
▪ Explosive atmosphere.....	3
▪ Blasting areas – construction sites.....	4
▪ Do not use on aircraft.....	4
▪ Do not use in hospitals.....	4
▪ Interference from radio signals.....	4
▪ Immunity to interference.....	4
▪ Cardiac pacemakers, implanted defibrillators & other medical.....	5
▪ Hearing devices.....	5
▪ Children.....	5
▪ Driving.....	5
▪ SIM cards.....	5
▪ Accessories.....	5
▪ Traveling.....	6
▪ Safe distance.....	6
▪ Supply voltage.....	6
▪ Clearance and creepage distances.....	6



1. Introduction

When using the Option Globetrotter modules it is necessary to pay attention to all safety aspects described in this document. Using these guidelines is mandatory to provide certainty of the safe use of the card for the end-user. Breaking these rules may be dangerous or illegal.

2. Safety Measurements

Following items contain simple recommendations relevant to the use of the Option modules, please read them carefully. Not following these guidelines can cause harm to the module, yourself or other persons in your immediate environment.

■ General recommendations for use

- Always treat your product with care and keep in a clean and dust-free place. Do not expose your product to open flames or lit tobacco products.
- Do not expose to liquid, moisture or humidity. Do not expose the module to rain, or other liquids. Do not drop, throw or try to bend your product.
- Do not paint your product.
- Do not attempt to disassemble your product. Doing so will void the warranty. Only authorised personnel should do so.
- Do not touch the antenna unnecessarily.

■ Extreme temperatures

Do not expose the module or the antenna to extreme temperatures i.e. outside of minimum -25 and maximum +35 degrees Celsius.

■ Explosive atmosphere

Turn off your electronic equipment in any area with a potentially explosive atmosphere. It is rare, but electronic equipment could generate sparks. Sparks in such areas could cause an explosion or fire resulting in bodily injury or even death. Areas with a potentially explosive atmosphere are often but not always, clearly marked. They include fuelling areas (petrol filling stations), below deck on boats, fuel or chemical transfer or storage facilities, and areas where the air contains chemicals or particles, such as grain, dust, or metal powders. Do not transport or store flammable gas, liquid, or explosives in the compartment of your vehicle which contains your electronic equipment and accessories.



- **Blasting areas – construction sites**

Turn off your electronic equipment when in a blasting area in order to avoid interfering with two-way radios used in blasting operations.

- **Do not use on aircraft**

Using a wireless devices on aircraft can cause interference and is illegal. Do not use it on the ground without permission from the aircraft crew.

- **Do not use in hospitals**

Follow any regulations or rules. In most cases in hospitals, Option modules do not pose any problems. However, using an Option product close to sensitive electronic devices could possibly result in interference. People are usually asked to switch off all electronic devices in some selected areas in hospitals, a recommendation that Option fully supports.

- **Interference from radio signals**

Option relies on health authorities and relevant expert bodies for advice on any potential undesired responses to radio frequency fields from modular technology such as interference to electronic or electrical equipment and transmission in hazardous environments.

- **Immunity to interference**

In electromagnetic terms, interference is the disturbance of the normal operation of an electronic or electrical device due to an undesired response to radio signals from an external source. In relation to the Option module, it is for example possible to detect a short audible signal over radios or multimedia personal computers just seconds before the phone rings. These audible signals do not, however interfere with the operation of the radio, computer or phone. 1989 Directive from the European Commission (89/336/ECC)¹³ governing all forms of electronic equipment concerns interference that such equipment produces and its immunity to interference from outside. Any equipment compliant with that directive is unlikely to suffer interference. All wireless devices may get interference which could affect performance.



■ **Cardiac pacemakers, implanted defibrillators & other medical implant devices**

It is possible that some modular products may interfere with some types of pacemakers or implanted defibrillators when operated close to the implanted device. You should seek advice from your doctor for advice for your specific implant. Health authorities in many countries have set up advisory services for medical devices and implants including providing advice about maintaining separation distances between modules or other radio frequency terminal equipment and the embedded device. Option operating companies reflect the advice given by their relevant health authority or national advisory service and/or as a minimum indicate a separation distance of at least 15cm between the modular equipment or other radio frequency terminal equipment and the embedded device.

■ **Hearing devices**

People with hearing aids or other cochlear implants may experience interfering noises when using mobile devices or when one is nearby. The level of interference will depend on the type of module, the type of hearing device and the distance between the two. Interference may be reduced by keeping a distance between the mobile device and hearing device.

■ **Children**

Do NOT allow children to play with the Option modules. They could hurt themselves or others, or could accidentally damage the product. Your module also contains small parts with sharp edges that may cause an injury or which could become detached and create a choking hazard.

■ **Driving**

Do NOT use the Option module or any product having an integrated module while driving; park the vehicle first.

■ **SIM cards**

Inserting and removing the SIM card - precautions against electrostatic discharge (ESD). Do NOT touch the SIM card connectors. As a precaution, always make sure that electronic equipment is switched off before you insert or remove the SIM card.

■ **Accessories**

Use only approved accessories. Do NOT connect with incompatible products.



- **Traveling**

Handle the equipment with care while traveling.

- **Safe distance**

Concerning specific safety guidelines we advise the end-user to keep a minimum distance of 20 cm between himself and the device.

- **Supply voltage**

The PCI mini express card has to be supplied by a limited power source according to EN 60950-1:2001.

- **Clearance and creepage distances**

The clearance and creepage distances shall not be influenced negatively by the installation in the end-product.