

User Guide

- 1 Getting Started
- 2 Using the Computer
- 3 Settings and Upgrade
- 4 Backup / Restore
- 5 Appendix



Start ▶



Contents



Chapter 1. Getting Started

- 3 Before You Start
- 6 Safety Precautions
- 21 Proper Posture During Computer Use
- 24 Overview
- 28 Turning the Computer On and Off



Chapter 2. Using the Computer

- 35 Using the Touch Screen
(For Windows 7 touch screen models only)
- 41 Entering Letters Using the Touch Screen
(For Windows 7 touch screen models only)
- 43 Using the Touch Launcher
(For Windows 7 touch screen models only)
- 44 Using the Touch Supporter
(For Windows 7 touch screen models only)
- 46 Using the camera
- 48 Keyboard (Optional)
- 50 Micro SD Card Slot (Optional)
- 52 Connecting an External Display Device
- 57 Connecting an External Digital Device
- 58 Adjusting the Volume
- 60 Wired Network (Optional)

- 63 Wireless Network (Optional)
- 67 Using the Slate PC Dock (Optional)



Chapter 3. Settings and Upgrade

- 71 LCD Brightness Control
- 73 Easy Settings (Optional)
- 74 BIOS Setup
- 76 Changing the Boot Priority
- 77 Battery



Chapter 4. Backup / Restore

- 83 Samsung Recovery Solution (Optional)



Chapter 5. Appendix

- 96 Important Safety Information
- 98 Replacement Parts and Accessories
- 100 Regulatory Compliance Statements
- 115 WEEE Symbol Information
- 116 Product Specifications
- 118 Glossary
- 122 Index



Chapter 1. Getting Started

Before You Start	3
Safety Precautions	6
Proper Posture During Computer Use	21
Overview	24
Turning the Computer On and Off	28



Before reading the User Guide, first check the following information.



- Optional items, some devices and software referred to in the User Guide may not be provided and/or changed by upgrade.
Note that the computer environment referred in the User Guide may not be the same as your own environment.
- The pictures used for the cover and the main body in the User Manual are those of the representative model of each series and may differ from the actual appearance of the product.
- This guide describes procedures for using both the mouse and the touch screen.
- The User Guide describes information on the basis of the touch screen.
- This manual has been written for the Windows 7 operating system. The descriptions and figures may differ depending on the installed operating system.
- The User guide supplied with this computer may vary depending on your model.





Using the software

- The software described in the main text can be launched using the following menu path.
 - **Start > All Programs**
 - **Start > All Programs > Samsung**
- When the programs are not installed, select **Samsung Recovery Solution > System Software** to install the programs. (Only for models supplied with Samsung Recovery Solution)

Safety Precaution Notations

Icon	Notation	Description
	Warning	Failure to follow instructions marked with this symbol, may cause personal injury and or fatality.
	Caution	Failure to follow instructions marked with this symbol, may cause slight injury to yourself or damage your property.

Text Notations

Icon	Notation	Description
	Caution	Content included in this section includes information required about the function.
	Note	Content included in this section includes helpful information to use the function.

Copyright

© 2011 Samsung Electronics Co., Ltd.

Samsung Electronics Co., Ltd. owns the copyright of this manual.

No part of this manual may be reproduced or transmitted in any form or by any means, electronic or mechanical, without the consent of Samsung Electronics Co., Ltd.

The information in this document is subject to change without notice due to improving the performance of the product.

Samsung Electronics shall not be liable for any data loss. Please take care to avoid losing any important data and backup your data to prevent any such data loss.

Precautions for Operating System Support

If a problem occurs because of the reinstallation of other operating systems(OS) or a previous version of an OS pre-installed on this computer, or a software that does not support the OS, the company will not provide technical support, a replacement or refund, and if our service engineer visits you due to this problem, a service charge will be applied.

Performance Restrictions

Online games and some games(3D,2D) may not be supported and Full HD video and some high bit rate HD video playback may be slow and stutter on this computer.

About the Product Capacity Representation Standard

About the capacity representation of the storage

The capacity of the storage device (HDD, SSD) of the manufacturer is calculated assuming that 1KB=1,000 Bytes.

However, the operating system (Windows) calculates the storage device capacity assuming that 1KB=1,024 Bytes, and therefore the capacity representation of the HDD in Windows is smaller than the actual capacity due to the difference in capacity calculation.

(E.g. For a 80GB HDD, Windows represents the capacity as 74.5GB, $80 \times 1,000 \times 1,000 \times 1,000 \text{ byte} / (1,024 \times 1,024 \times 1,024) \text{ byte} = 74.505 \text{ GB}$)

In addition, the capacity representation in Windows may be even smaller because some programs such as Recovery Solution may reside in a hidden area of the HDD.

About Memory Capacity Representation

The memory capacity reported in Windows is less than the actual capacity of memory.

This is because BIOS or a video adapter uses a portion of memory or claims it for further use.

(E.g. For 1GB(=1,024MB) memory installed, Windows may report the capacity as 1,022MB or less)

For more information, refer to the Samsung Recovery Solution section.

For your security and to prevent damage, please read the following safety instructions carefully.

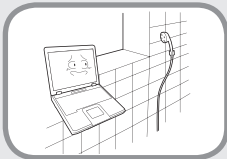


Since this is commonly applied to Samsung Computers, some pictures may differ from actual products.

Warning

Failure to follow instructions marked with this symbol may cause personal injury and even fatality.

Installation Related



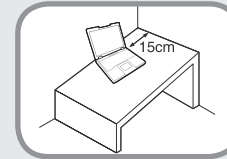
Do not install the product in places exposed to humidity such as a bathrooms.

There is a danger of electric shock. Use the product within the operating conditions specified in the Manufacturers User Guide.



Keep the plastic bags out of the reach of children.

There is a danger of suffocation.



Keep a distance of 15cm or more between the computer and the wall and do not place any objects between them.

This may increase the internal temperature of the computer and may cause an injury.



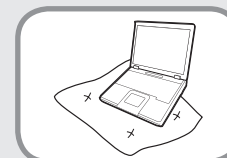
Do not install the computer on a slant or a place prone to vibrations, or avoid using the computer in that location for a long time.

This increases the risk that a malfunction or damage to the product will occur.



Avoid exposing any part of your body to the heat from the computer vent or AC adapter for a long time when the computer is on.

Exposing a part of your body close to the heat from the vent or AC adapter for long periods of time may cause a burn.




Avoid blocking the vent at the bottom or side of the computer when using it on a bed or cushion.

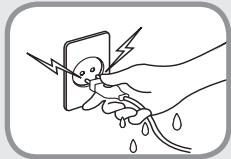
If the vent is blocked, there is a danger of damaging the computer or overheating the inside of the computer.

Warning

Failure to follow instructions marked with this symbol may cause personal injury and even fatality.

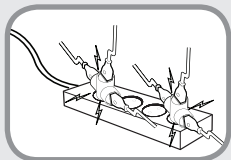
Power Related

 The power plug and wall outlet figures may differ depending on the country specifications and the product model.



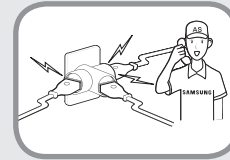
Do not touch the main plug or power cord with wet hands.

There is a danger of electric shock.



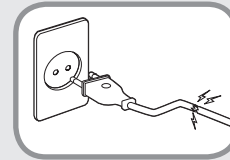
Do not exceed the standard capacity (voltage/current) of a multiplug or power outlet extension when using it for the product.

There is a danger of electric shock or fire hazard.



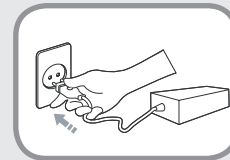
If the power cord or power outlet makes a noise, disconnect the power cord from the wall outlet and contact a service center.

There is a danger of electric shock or fire hazard.



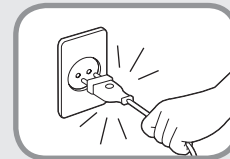
Do not use a damaged or loose main plug or power cord or power outlet.

There is a danger of electric shock or fire hazard.



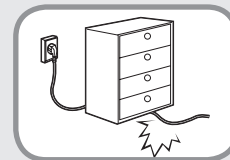
Plug the power cord firmly into the power outlet and AC adapter.

Failure to do so may cause fire hazard.



Do not unplug the power cord by pulling the cable only.

If the cord is damaged, it may cause electric shock.

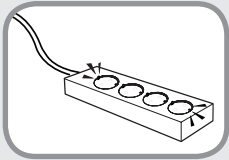


Do not bend the power cord excessively or do not place a heavy object over the power cord. It is especially important to keep the power cord out of reach of infants and pets.

If the cord is damaged, it may cause electric shock or fire.

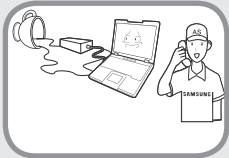
Warning

Failure to follow instructions marked with this symbol may cause personal injury and even fatality.



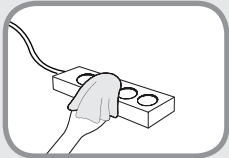
Connect the power cord to an outlet or multiple power plug (extended cable) with a ground terminal.

Failure to do so may result in electric shock.



If water or a foreign substance enters the power jack, adapter or computer, immediately separate the power cord and battery and call the service center.

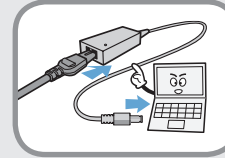
Damage to the device within the computer may cause electric shock or fire hazard.



Keep the power cord or outlet clean so that they are not covered with dust.

Failure to do so may result in fire.

AC Adapter Usage Precautions

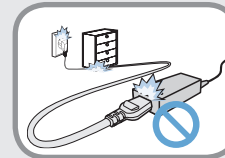


Connect the power cord to the AC adapter firmly.

Otherwise, there is a danger of fire due to an incomplete contact.

Use only the AC adapter supplied with the product.

Using another adapter may cause the screen to flicker.



Do not place heavy objects or step onto the power cord or AC adapter to avoid damaging the power cord or AC adapter.

If the cord is damaged, there is a danger of electric shock or fire.

Warning

Failure to follow instructions marked with this symbol may cause personal injury and even fatality.

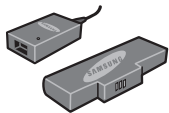
Battery Usage Related

 Please charge the battery fully before using the computer for the first time.



Keep the battery out of the reach of infants and pets, as they could put the battery into their mouths.

There is a danger of electric shock or choking.



Use an authorized battery and AC adapter only.

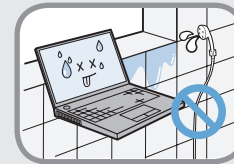
Please use an authorized battery and adapter approved by Samsung Electronics.

Unauthorized batteries and adapters may not meet the proper safety requirements and may cause problems or malfunctions and result in an explosion or fire.



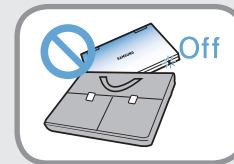
Do not use the computer in a badly ventilated location such as on bedding, on a pillow or cushion, etc, and do not use it in a location such as room with floor heating as it may cause the computer to overheat.

Take care that the computer vents (on the side or the bottom) are not blocked especially in these environments. If the vents are blocked, the computer may overheat and it may cause a computer problem, or even an explosion.



Do not use the computer in a humid location such as a bathroom or sauna.

Please use the computer within the recommended temperature and humidity range (10~32°C, 20~80% RH).

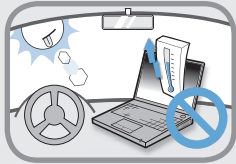


Do not close the LCD panel and put the computer into your bag to move it when it is still turned on.

If you put the computer into your bag without turning it off, the computer may overheat and there is a danger of fire. Shut the computer down properly before moving it.

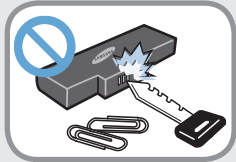
Warning

Failure to follow instructions marked with this symbol may cause personal injury and even fatality.



Never heat the product(or battery) or put the product(or battery) into a fire. Do not put or use the product(or battery) in a hot location such as a sauna, inside a vehicle exposed to the heat, and so on.

There is a danger of an explosion or fire.



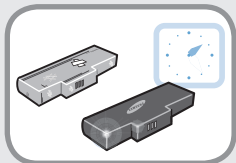
Take care not to allow metal objects such as a key or clip to touch the battery terminal (metal parts).

If a metal object touches the battery terminals, it may cause excessive current flow and it may damage the battery, or result in a fire.



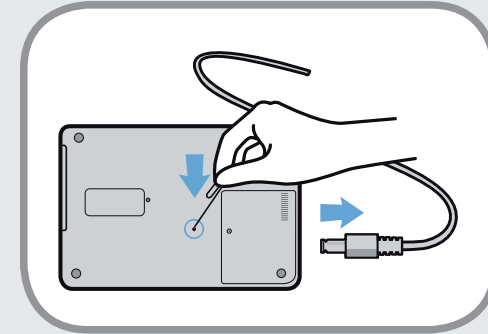
If liquid leaks out of the product(or battery) or there is a funny smell coming from the product(or battery), remove the the product(or battery) the computer and contact a service center.

There is a danger of an explosion or fire.



To use the computer safely, replace a dead battery with a new, authorized battery.

Cutting the power to the internal battery (for corresponding models only.)



- For products with built-in batteries, customers cannot remove the battery.
- In the case of flooding, lightning or explosions, you can cut the battery power by inserting an object such as a paper clip into the [Emergency Hole] at the bottom of the computer.
- Disconnect the AC adapter and insert an object such as a paper clip into the hole at the bottom of the computer to cut the battery power.





In the case of flooding, lightning or explosions, cut the battery power, do not reconnect the AC adapter, and immediately contact Samsung Electronics so that the appropriate countermeasures can be taken.

Warning

Failure to follow instructions marked with this symbol may cause personal injury and even fatality.

- Thereafter, if you connect the AC adapter, the battery power will be supplied again.

-  **Do not cut the battery power under normal conditions.**
- **This may result in data loss or a product malfunction.**

 The location of the Emergency Hole may differ depending on the model.

Usage Related



Disconnect all cables connected to the computer before cleaning it. If your notebook is external & removable battery type, remove the external battery.

There is a danger of electric shock or damage to the product.



Do not connect a phone line connected to a digital phone to the modem.

There is a danger of a electric shock, fire or damage to the product.



Do not place any container filled with water or chemicals over or near the computer.

If water or chemicals enter the computer, this may cause fire or electric shock.



If you drop or damage the computer, separate the power cord and battery and ask the service center to perform a safety check.

Using a broken computer may cause electric shock or fire hazard.

Warning

Failure to follow instructions marked with this symbol may cause personal injury and even fatality.



Avoid direct sunlight when the computer is in an air-tight location such as inside a vehicle.

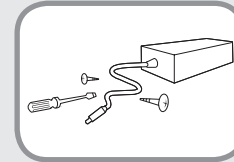
There is a danger of a fire hazard. The computer may overheat and also present opportunity to thieves.



Do not use your notebook PC for long periods of time while any part of your body is making direct contact with it. The temperature of the product may increase during normal operation.

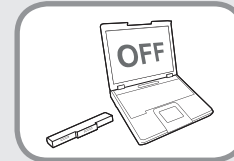
This may result in harming or burning your skin.

Upgrade Related



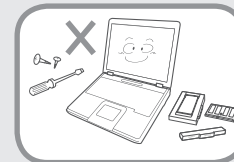
Never disassemble the power supply or AC adapter.

There is a danger of electric shock.



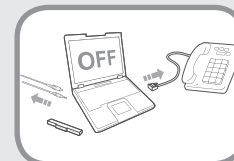
When removing the RTC (Real Time Clock) battery, keep it out of the reach of children as they could touch and/or swallow it.

There is a danger of choking. If a child has swallowed it, contact a doctor immediately.



Use only authorized parts (multi-plug, battery and memory) and never disassemble parts.

There is a danger of damaging the product, electric shock or fire hazard.



Shut down the computer and disconnect all cables before disassembling the computer. If there is a modem, disconnect the phone line. If your notebook is external & removable battery type, remove the external battery.

Failure to do so, may cause electric shock.

Warning

Failure to follow instructions marked with this symbol may cause personal injury and even fatality.

Security and Movement Related

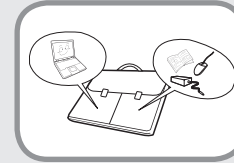


Follow the instructions for the relevant location (e.g. airplane, hospital, etc.) when using a wireless communication device (wireless LAN, Bluetooth, etc.).



Avoid exposing a drive to magnetic fields. Security devices with magnetic fields include airport walk-through devices and security wands.

The airport security devices that check carry-on luggage, such as conveyor belts, use x-rays instead of magnetism and will not damage a drive.



When carrying the notebook computer with other items, such as the adapter, mouse, books etc, take care not to press anything against the notebook computer.

If a heavy object is pressed against the notebook computer, a white spot or stain may appear on the LCD. Therefore, take care not to apply any pressure to the notebook.

In this case, place the notebook computer in a separate compartment away from the other objects.



Caution

Failure to follow instructions marked with this symbol may cause slight injury or damage to the product.

Installation Related

Do not block the ports (holes), vents, etc. of the product and do not insert objects.

Damage to a component within the computer may cause electric shock or fire.

When using the computer with it lying on its side, place it so that the vents face upwards.

Failure to do so, may cause the internal temperature of the computer to rise and the computer to malfunction or halt.

Do not place a heavy object over the product.

This may cause a problem with the computer. In addition, the object may fall and cause injury, or damage the computer.

Battery Usage Related

Dispose of worn-out batteries properly.

- There is a danger of fire or explosion.
- The battery disposal method may differ depending on your country and region. Dispose of the used battery in an appropriate way.

Do not throw or disassemble the battery and do not put it into water.

This may cause an injury, fire or explosion.

Use only a battery authorized by Samsung Electronics.

Failure to do so may cause an explosion.

Avoid contact with metal objects such as car keys or clips when keeping or carrying a battery.

Contact with a metal may cause excessive current and a high temperature and may damage the battery or cause a fire.

Charge the battery according to the instructions in the manual.

Failure to do so, may cause an explosion or fire from damage to the product.

Do not heat the product(or battery) or expose it to heat (e.g. inside a vehicle during the summer).

There is a danger of explosion or fire.



Caution

Failure to follow instructions marked with this symbol may cause slight injury or damage to the product.

Usage Related

Do not place a candle, light cigar, etc. over or on the product.

There is a danger of fire.

Use a wall outlet or multi-plug with a grounding part.

Failure to do so may cause electric shock hazard.

Make sure to have the product tested by a safety service engineer after repairing the product.

Authorized Samsung Repair Centers will carry out safety checks after a repair. Using a repaired product without testing it for safety may cause an electric shock or fire.

In case of lightning, immediately turn the system off, disconnect the power cord from the wall outlet and phone line from modem. Do not use a modem or phone.

There is a danger of electric shock or fire.

Do not use your computer and AC-Adapter on your lap or soft surfaces.

If the computer temperature increases, there is a danger of burning yourself.

Connect only permitted devices to the connectors or ports of the computer.

Failure to do so, may cause electric shock and fire.

Close the LCD panel only after checking if the notebook computer is turned off.

The temperature may rise and it may cause overheating and deformation of the product.

Do not press the Eject Button while the Floppy Disk/CD-ROM drive is in operation.

You might lose data and the disk might be suddenly ejected and could cause an injury.

Take care not to drop the product while using it.

This may cause personal injury or loss of data.

Do not touch the antenna with electricity facility such as the power outlet.

There is a danger of electric shock.

When handling computer parts, follow the instructions on the manual supplied with the parts.

Failure to do so, may cause damage to the product.



Caution

Failure to follow instructions marked with this symbol may cause slight injury or damage to the product.

If the computer emits smoke, or there is a burning smell, disconnect the power plug from the wall outlet and contact a service center immediately. If your notebook is external & removable battery type, remove the external battery.

There is a danger of fire.

Do not use a damaged or modified CD/Floppy Disk.

There is a danger of damaging the product or personal injury.

Do not insert your fingers into the PC Card Slot.

There is a danger of injury or electric shock.

Use recommended computer cleansing solution when cleaning the product and only use the computer when it is completely dried.

Failure to do so may cause electric shock or fire.

Emergency disk eject method using paperclip should not be used while the disk is in motion. Make sure to use the emergency disk eject method only when the Optical Disk Drive has stopped.

There is a danger of injury.

Do not place your face close to the Optical Disk Drive tray when it is operating.

There is a danger of injury due to an abrupt ejection.

Check CDs for cracks and damage prior to use.

It may damage the disc and cause disorder of device and injury of user.



Caution

Failure to follow instructions marked with this symbol may cause slight injury or damage to the product.

Upgrade Related

Take care when touching the product or parts.

The device may be damaged or you may be injured.

Take care not to throw or drop a computer part or device.

This may cause injury or damage to the product.

Make sure to close the computer cover before connecting the power after a reassembly.

There is a danger of electric shock if your body touches an internal part.

Use parts authorized by Samsung Electronics only.

Failure to do so, may cause fire or damage the product.

Never disassemble or repair the product by yourself.

There is a danger of electric shock or fire.

To connect a device that is not manufactured or authorized by Samsung Electronics, enquire at your service center before connecting the device.

There is a danger of damaging the product.

Security and Movement Related

When moving the product, turn the power off and separate all connected cables first.

The product might be damaged or users may trip over the cables.

For long periods of not using the notebook computer, discharge the battery and preserve as it is detached. (For external & removable battery type)

The battery will be preserved at its best condition.

Do not operate or watch the computer while driving a vehicle.

There is a danger of a traffic accident. Please concentrate on driving.



Caution

Failure to follow instructions marked with this symbol may cause slight injury or damage to the product.

Cautions on Preventing Data Loss (Hard Disk Management)

Take care not to damage the data on a hard disk drive.

- A hard disk drive is so sensitive to external impact that an external impact may cause loss of data on the surface of the disk.
- Take extra care, because moving the computer or an impact on the computer when it is turned on may damage the data of the hard disk drive.
- The company is not liable for any loss of data on the hard disk drive.

Causes that may damage the data of a hard disk drive and the hard disk drive itself.

- The data may be lost when an external impact is applied to the disk while disassembling or assembling the computer.
- The data may be lost when the computer is turned off or reset by a power failure while the hard disk drive is operating.
- The data may be lost and irrecoverable due to a computer virus infection.
- The data may be lost if the power is turned off while running a program.
- Sudden impact or movement to the computer while the hard disk drive is operating, may cause files to be corrupted or bad sectors on the hard disk.

To prevent data loss due to damage to the hard disk drive, please backup your data frequently.

Using the power supply in an airplane

Since the power outlet type differs depending on the type of airplane, connect the power appropriately.



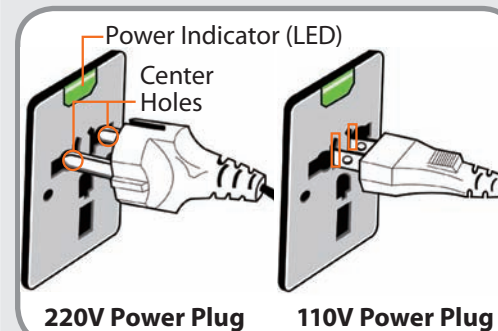
Since the representative figures of the power plug and the auto adapter are used, they may differ from the actual parts.

When using the AC power plug

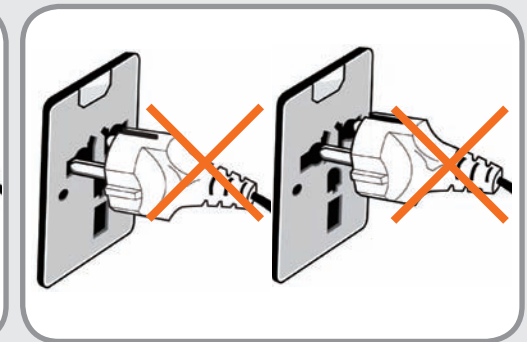
Connect the power plug pins perpendicular into the center of the power outlet.

- If the plug pins are not inserted into the center of the holes, the plug pins are only inserted up to half their length. In this case, reconnect the power plug.
- You have to insert the power plug into the outlet when the power indicator (LED) of the power outlet is lit green. If the power is connected properly, the power indicator (LED) remains green.

Otherwise, the power indicator (LED) is turned off. In this case, unplug the power, check if the power indicator (LED) is green, and then reconnect the power plug.



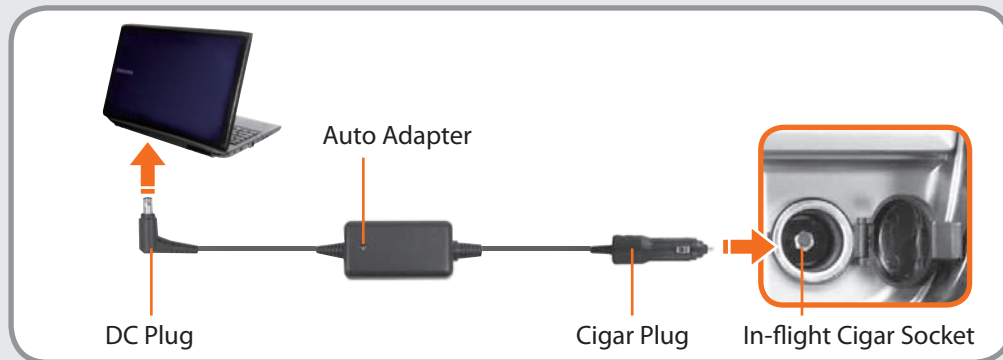
Good Example ○



Wrong Example ✕

When using the auto adapter

When the cigar socket is provided, you have to use the auto adapter (optional). Insert the cigar plug of the auto adapter into the cigar socket and connect the DC plug of the auto adapter to the power input port of the computer.



When using the Airplane Charging Converter

Depending on the airplane, you have to use the auto adapter and charging converter. Connect the airplane charging converter (optional) to the auto adapter (optional) and then insert the airplane power input jack into the power outlet.



Maintaining a proper posture during computer use is very important to prevent physical harm.

The following instructions are about maintaining a proper posture during computer use developed through human engineering. Please read and follow them carefully when using the computer.

Otherwise, the probability of (RSI: Repetitive Strain Injury) from repeated operations may increase and serious physical harm may be caused.



- The instructions in this manual have been prepared so that they can be applied within the coverage of general users.
- If the user is not included in the coverage, the recommendation is to be applied according to the user's needs.

Proper Posture

Adjust the heights of desks and chairs appropriate to your height.

The heights are to be adjusted so that your arm forms a right angle when you place your hand over the keyboard while sitting down on a chair.

Adjust the height of chair so that your heel is comfortably placed on the floor.

- Do not use the computer while you are lying down, but only while you are sitting down.
- Do not use the computer on your lap. If the computer temperature increases, there is a danger of burning yourself.
- Work while keeping your waist straight.
- Use a chair with a comfortable back.
- Keep the center of your leg weight not on the chair but on your feet when you are sitting on a chair.
- To use the computer while talking over the telephone, use a headset. Using the computer with the phone on your shoulder is bad for posture.
- Keep frequently used items within a comfortable work range (where you can reach them with your hands).



Eye Position

Keep the monitor or LCD away from your eyes by at least 50cm.



- Adjust the height of the monitor and the LCD screen so that its top height is equal to or lower than your eyes.
- Avoid setting the monitor and LCD excessively bright.
- Keep the monitor and LCD screen clean.
- If you wear glasses, clean them before using the computer.
- When entering contents printed on a paper into the computer, use a static paper holder so that the height of the paper is almost equal to that of the monitor.

Hand Position

Keep your arm at a right angle as shown by the figure.



- Keep the line from your elbow to your hand straight.
- Do not place your palm over the keyboard while typing.
- Do not hold the mouse with excessive force.
- Do not press the keyboard, touchpad or mouse with excessive force.
- It is recommended connecting an external keyboard and mouse when using the computer for long periods of time.

Volume Control (Headphones and Speakers)

Check your volume first to listen to music.



- Check if the volume is too loud before using headphones.
- It is not recommended using headphones for long periods of time.
- Any deviation from the equalizer default setting could cause hearing impairment.
- The default setting can be changed through software and driver updates without your intervention. Please check the equalizer default setting before first usage.

Use Time (Break Time)

- Take a break for 10 minutes or more after a 50-minute period when working for more than one hour.

Illumination

- Do not use the computer in dark locations. The illumination level for computer use must be as bright so for reading a book.
- Indirect illumination is recommended. Use a curtain to prevent reflection on the LCD screen.

Operation Condition


- Do not use the computer in hot and humid locations.
- Use the computer within the allowed temperature and humidity range specified in the User Guide.

Front View



- The pictures used for the cover and the main body in the User Manual are those of the representative model of each series. Therefore the colors and appearance of the pictures may differ from the actual appearance of the product depending on the model.
- The actual color and appearance of the computer may differ from the pictures used in this guide.



1	Camera (Optional)	Using this camera, you can take still pictures and record video.
2	Illumination Sensor	This sensor detects the ambient illumination around the PC. If the ambient illumination decreases, the touch screen brightness is set to low. Conversely, if the ambient illumination increases, the touch screen brightness is set to high.
3	Touch Screen	The screen images are displayed here. This works as a touch screen in models that support touch screens (Optional).
4	Home button 	You can switch to Windows Desktop mode or touch mode. <ul style="list-style-type: none">• Press the button once: Shows the Windows Desktop screen.• Press and hold the button once for a short while: Launches the Touch Launcher.• Press the button twice: Performs the function of pressing the windows and tab key combination.• Press and hold the button for 4 seconds + press the power button: Performs the function of pressing the ctrl + alt + del key combination.

Right View




1	Power Button / Power Button LED	Turns the computer on and off. When the computer is on, the power button LED is lit.
2	Rotation Lock	Locks the screen rotation so that the screen does not automatically rotate according to the orientation function of the product.
3	SIM Card Slot (Optional)	This slot is for SIM cards.

Left View



1 USB Port 

You can connect USB devices to the USB port such as a keyboard/mouse, digital camera, etc.

2 Ear-set / headset Jack



This is the jack for connecting an ear-set or headset.

3 Volume Control Button

Controls the volume.

4 Micro Digital Video / Audio Port (Micro HDMI)

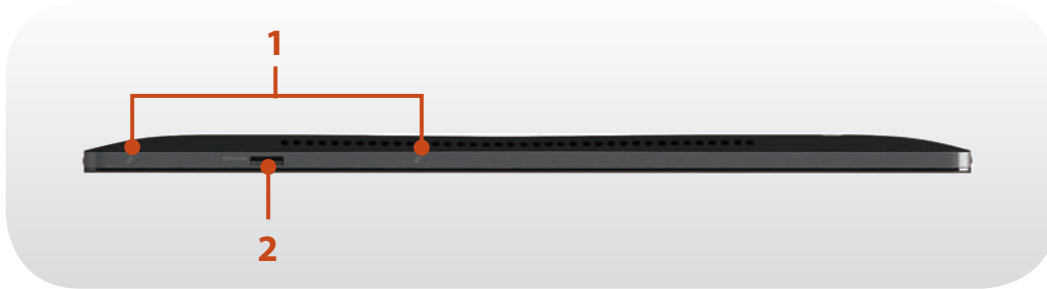

This is the port for a micro HDMI. You can enjoy digital video and audio by connecting the computer to a TV.

 You can connect a VGA adapter (optional).

5 DC Jack 

A jack to connect the AC adapter that supplies power to the computer.

Top View



1 Microphone 

You can use the built-in microphone.

2 Micro SD Card Slot
 (Optional)

This slot is for micro SD cards.

Bottom View



1 Slate PC Dock Port
(Optional)

This port is for external devices (Slate PC Dock (optional)).

Rear View



1 Camera (Optional)

Using this camera, you can take still pictures and record video.



If you replace the bottom of the product, the model name, serial number and some logos etched into the bottom of the product will no longer be there.

For more information, talk to a service engineer.

Turning the computer on

- 1 Connect the **AC adapter**.
- 2 Press the **Power button** to turn the computer on.



- 3 **Power button LED** is lit while the computer is turned on.



Entering Sleep mode

When the computer is turned on, press the computer's power button once briefly.

If the computer enters power-saving mode, the **power button LED** blinks blue.

To wake the computer up, briefly press the **Power** button of the computer again.

Using the Touch Logon function

Using the Touch Logon program, you can easily log on using your fingers.


Configuring the Touch Logon

To use the Touch Logon function, you have to configure the Touch Logon function in the Windows logon screen.

- 1 Press the **power button** to turn the computer on.
- 2 If the Windows logon screen appears, select the account for which you will configure the Touch Logon function and check the **Enable Touch Logon** option.

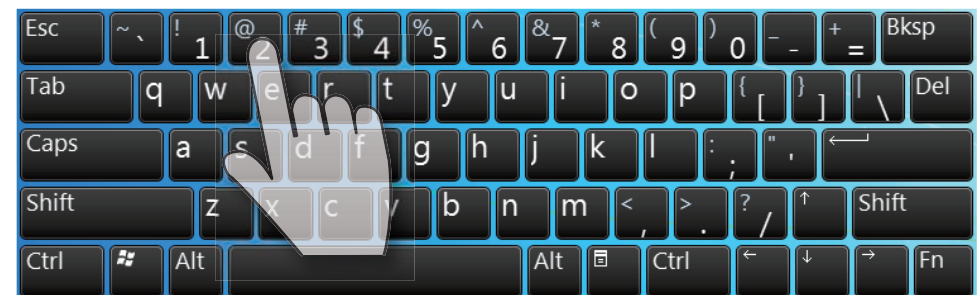


- 3 If you touch the **Windows logon password**, the Tablet PC input panel appears.

If the Tablet PC input panel does not appear, press the keyboard icon  at the bottom left of the screen.



- 4 Touch the corresponding buttons in the Tablet PC input panel to enter the Windows password.



5 When you have finished entering the password, press .



Start configuring the Touch Logon settings.

6 Select a Touch Logon background screen.
Select a background screen by touching it and then touch **Next**.



7 Set the Touch Logon password.
Touch the 4 digits to be used as the password.
When you have finished entering the password, press **Next**.



8 Re-enter the Touch Logon password.
Touch the password digits again.
When you have finished entering the password, press **Next**.

9 The Touch Logon setting has been completed. You can now use the Touch Logon function when you logon next.



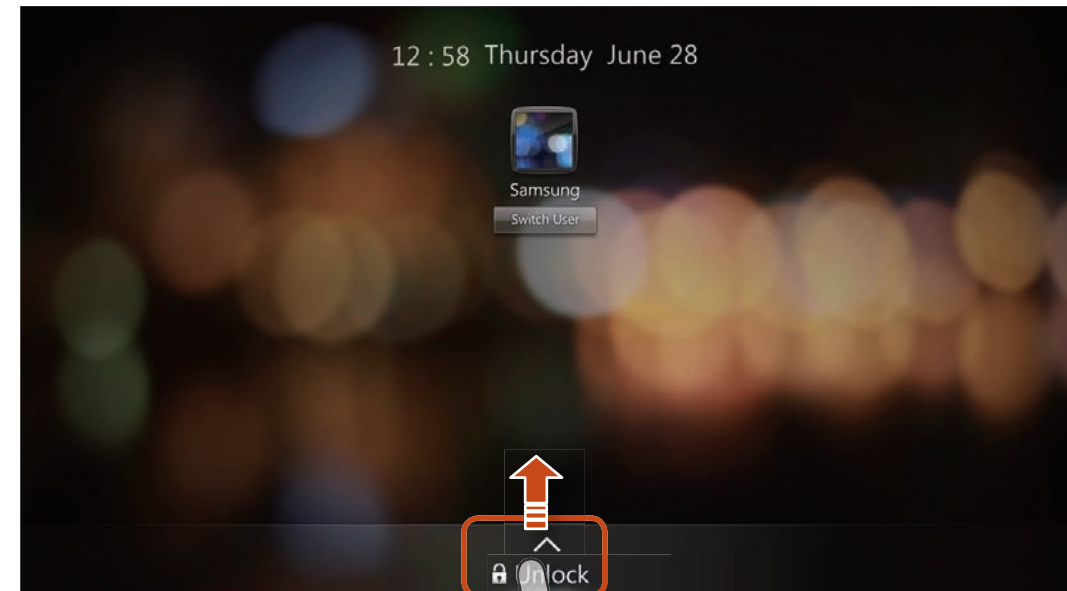
When you do not have a Windows account password

1. Click **Start > All Programs > Samsung > Touch Logon > Touch Logon Options**.
 2. Select the **Enable Touch Logon** item and click **OK**.
 3. Select a background for the touch logon function by touching the background of your choice and click **Next**.
- The touch logon settings have been completed.

Using the Touch Logon


Logging on to the Windows logon screen by touch

- 1 Press the **power button** to turn the computer on.
- 2 If the Windows logon screen appears, press the account which you want to log into by touch.
- 3 Touch **Unlock** at the bottom of the screen and then drag it to the top of the screen.



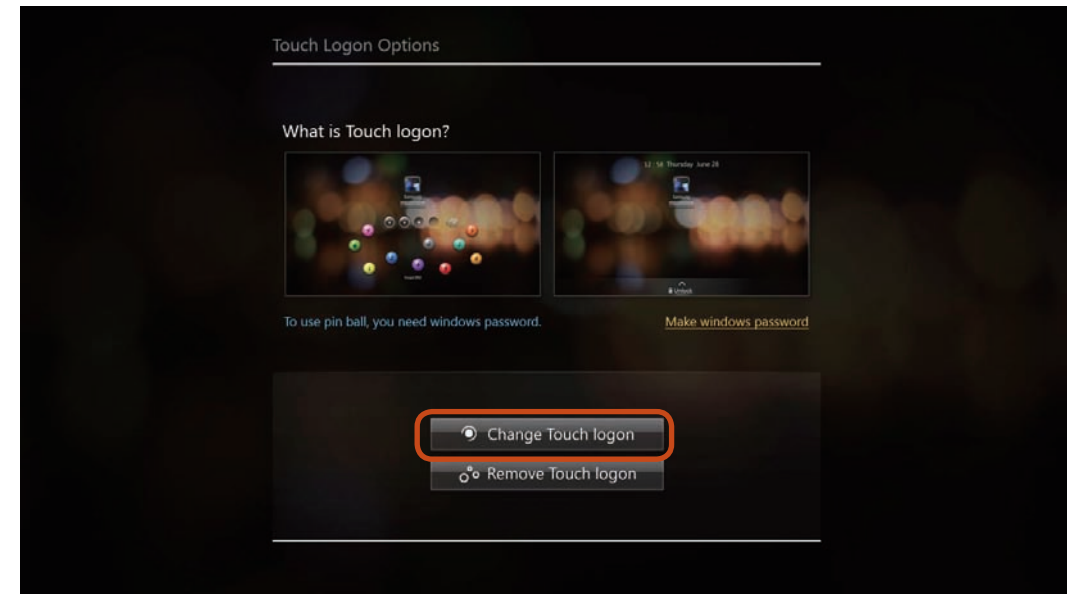
- 4 Touch the Touch Logon password and sequentially drag them to the Touch Logon input field.




 If there is no configured Windows account password, it is immediately **Unlocked** without requiring you to enter a password.

Disabling/changing the Touch Logon function

Using the **Touch Logon Options**, you can enable, disable and configure the Touch Logon function.



- 1 Click **Start > All Programs > Samsung > Touch Logon > Touch Logon Options**.
- 2 After launching the **Touch Logon Options**, you can configure, disable or change the Touch Logon function.

 If you register, remove or change the Windows password in the User Accounts item in the Control Panel, the Touch Logon function is disabled.

Turning the computer off



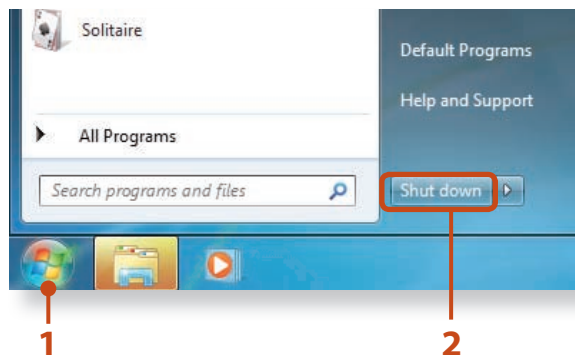
- Since the procedures to turn the computer off may differ depending on the installed operating system, please turn the computer off according to the procedures for the purchased operating system.
- Save all your data before clicking on **Shut down**.
- These descriptions are written based on Windows 7, the latest operating system. Therefore, some descriptions and figures may differ from your operating system. But as the usage is similar to other Windows operating systems, you can use these descriptions for reference.



If the computer cannot be shut down due to a system error, press and hold the **power button** for at least 4 seconds to shut it down by force.

Please note that the system diagnosis program may run when you turn the computer on after you have shut the computer down by holding the power button down.

Click **Start**  > **Shut down mode**  to shutdown the computer.





Chapter 2. Using the computer

Using the Touch Screen (For Windows 7 touch screen models only)	35
Entering Letters Using the Touch Screen (For Windows 7 touch screen models only)	41
Using the Touch Launcher (For Windows 7 touch screen models only)	43
Using the Touch Supporter (For Windows 7 touch screen models only)	44
Using the camera	46
Keyboard (Optional)	48
Micro SD Card Slot (Optional)	50
Connecting an External Display Device	52
Connecting an External Digital Device	57
Adjusting the Volume	58
Wired Network (Optional)	60
Wireless Network (Optional)	63
Using the Slate PC Dock (Optional)	67

You can use the computer using the touch screen only, without using the keyboard and mouse. The touch screen function is only supported for models which have the function installed at the factory.







- Use only your fingers for the touchscreen. Other tools such as a ballpoint pen are not recognized and using sharp objects may damage or scratch the surface of the LCD.
- If a digitizer pen (optional) is provided, you can use the digitizer pen instead.
- Since touching the touch screen with a conductive material such as a metallic object may cause a malfunction, take care not to touch the screen with this kind of object.



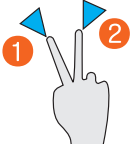
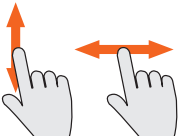


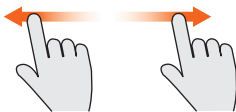
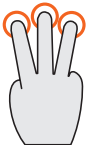
Using the Touch Screen




- This function is provided by touch screen models running Windows 7 and will only work for some applications.
- In addition, note that the supported functions are dependant on the application.
- You can use the digitizer pen (optional) as you use your fingers. The descriptions here are for using your fingers.

Learning basic touch screen operations

Touch Operation		Function
Single-tap (click)	 	To select an item, tap over the item with your finger. This is the same as left-clicking once with a mouse.
Double-tap (double-click)	 	To run an item, quickly tap the item twice with your finger. This is the same as double-clicking once.

Touch Operation		Function
Moving (drag)		<p>To drag an item, place your finger over the item and drag it to the new location. This is the same as dragging using a mouse.</p>
Press and take off (mouse right-click)		<p>If you press and hold the screen for approximately 3 seconds, the pop-up menu appears. This is the same as right-clicking with the mouse.</p>
Tapping two fingers in succession (mouse right-click)		<p>Tap with one finger and then tap with another finger while holding down the first finger. A pop-up menu appears. This is equivalent to right-clicking a mouse.</p>
Moving finger (scroll)		<p>Move your finger up and down, left or right to move on the screen accordingly. This is the scroll function of the mouse.</p> <p> This operation may perform a different function depending on the application program.</p>
Drag two fingers apart / together (zoom-in/zoom-out)		<p>Drag apart or together two fingers to zoom-in or -out of a picture or image.</p>
Flick one finger fast		<p>Flick one finger quickly to the left or right in order to move to the previous or next page.</p>
Tapping three fingers (Launching the Touch Supporter)		<p>Tapping three fingers simultaneously launches the touch support program.</p>

Touch Operation		Function
Tapping five fingers (Launching the keyboard program)		Tapping five fingers simultaneously launches the keyboard program.



Learning about touch operations

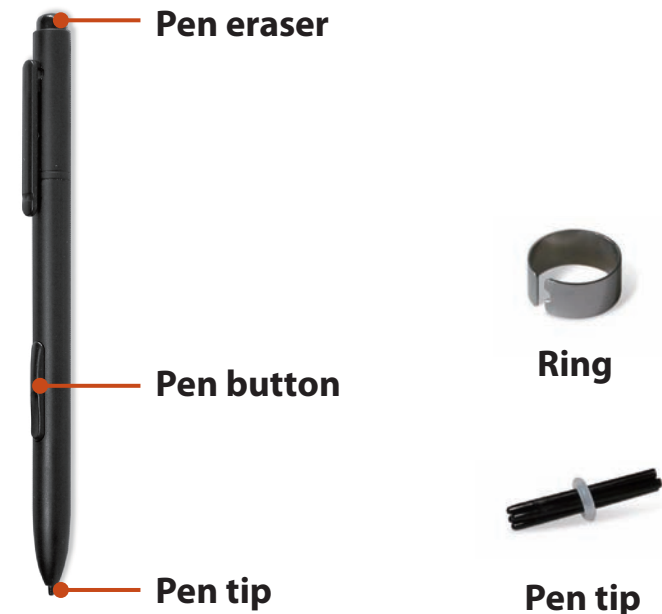
Select **Start > Control Panel > Hardware and Sound > Pen and Touch > Flicks** tab and select **Practice using flicks** to learn about the various touch operations.

Using the digitizer pen (optional)

If a digitizer pen is supplied with the product, you can operate the computer with the pen instead of your fingers.

You can use the digitizer pen as you would use your fingers.

Digitizer pen structure and functions



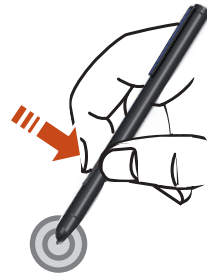
Pen tip

This performs the function of your finger tip when you touch the screen.

Pen button

If you press the pen button when the digitizer pen tip is on the screen, circles appear around the pointer on the screen. Touch the screen with the digitizer pen while holding down the pen button.

This performs the right-click function.



Pen eraser

Erases letters with the top end of the digitizer Pen.

This performs the function of an eraser.



Replacing the pen tip

If the pen tip is damaged, you can replace the pen tip as follows:

- 1 Hold the pen tip by inserting it into the hole of the ring and remove the tip by pulling it out.



- 2 Insert the new pen tip into the digitizer pen.



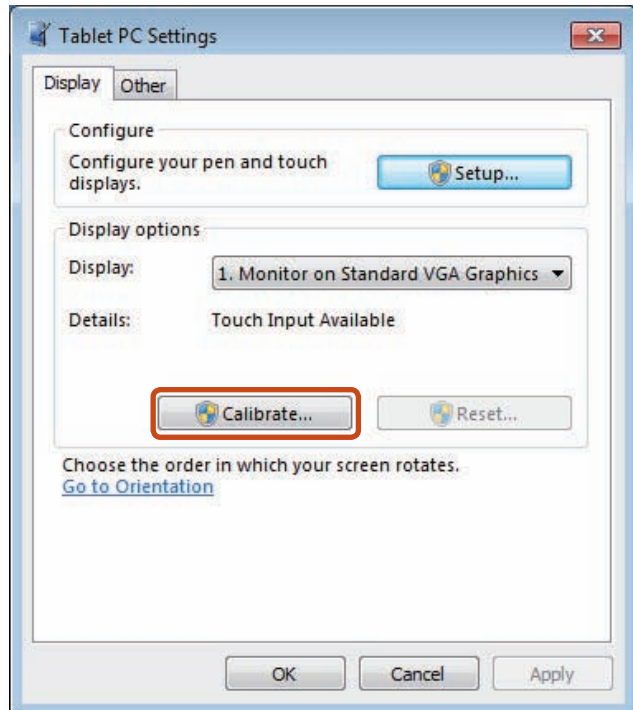
Take care so that the pen tip does not spring out when taking it out.

Screen Calibration

When you use the touch screen for the first time or the pointer on the screen does not precisely match the points you touch, calibrate the touch screen using the **Tablet PC Settings** menu.

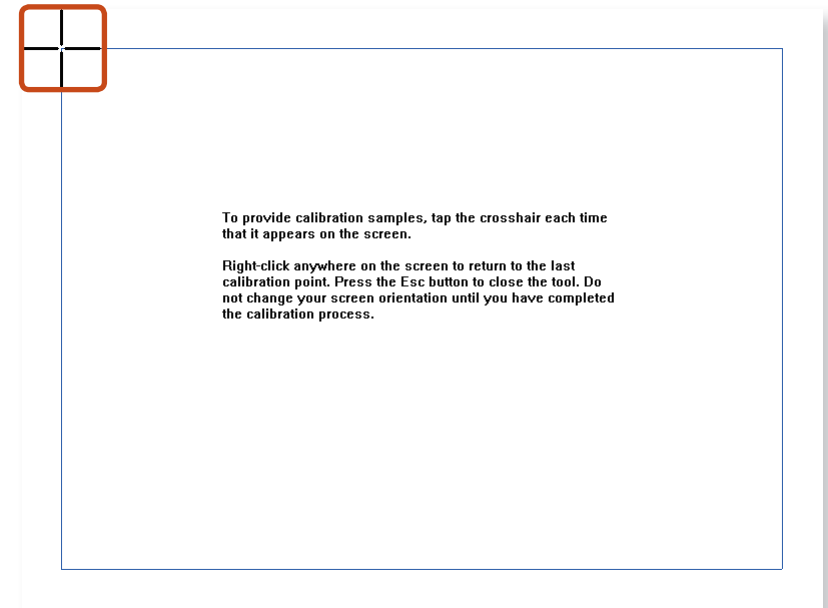
The calibration process for the touch screen may differ depending on the operating system and may not be available in some operating systems. The following descriptions assume the Windows 7 operating system.

- 1 Click **Start > Control Panel > Hardware and Sound > Tablet PC Settings > Display > Calibrate**.



- 2 Select the screen type to calibrate. If the **Calibration** screen appears, touch the point represented by the "+" mark and then remove your finger.

The "+" mark appears sequentially from the top left to the bottom right of the screen.



- 3 When the **Do you want to save the calibration data?** window appears, click **Yes**.

The touch screen input points are calibrated.

Touch screen use precautions

- Use the touch screen with clean and dry hands. In a humid environment, remove the moisture from your hands and the touch screen surface before use.
- Avoid directly spraying liquid cleansing solution onto the touch screen. The liquid solution may enter the touch screen through the bottom edge.

When using a liquid cleansing solution, dampen a cloth in the solution and clean the screen with the cloth (a cleansing solution or cloth containing abrasives may damage the touch screen.)

- Do not apply a severe impact to the touch screen or press the screen with a sharp object such as a ball-point pen.
This may damage the touch screen.
- If your finger only touches the touch screen slightly, your touch may not be recognized.
- If you wish to use a pen, please use the provided digitizer pen (optional). Otherwise, the computer may not work properly.
- Take care that you do not drop the digitizer pen as this may damage the pen tip.
- When pressing the touch screen, press over an item precisely taking care not to press other items.

- If the touch screen is contaminated by a foreign substance such as a bug or water, the touch screen will not work properly.

Entering Letters Using the Touch Screen

(For Windows 7 touch screen models only)

You can enter letters using either the **Tablet PC input panel**.




The procedures to enter letters for the Notepad will be described below as an example.

Using the Tablet PC input panel

The Tablet PC Input Panel is an on-board character input panel provided by Windows.

You can enter letters in 2 ways through the Tablet PC Input Panel.

Launching the Tablet PC input panel

- 1 Click **Start > All Programs > Accessories > Notepad** to launch Notepad.
- 2 If you touch the  Notepad screen with your finger, the  appears on the Notepad with the cursor.
- 3 If you touch the  with your finger, the Tablet PC Input Panel appears.


Writing Pad Mode

Touch keyboard

Tools

Close




If you touch the touch screen with your finger, the **Tablet PC Input Panel tab**  appears with the cursor at the bottom left on the Desktop. If you touch the **Tablet PC Input Panel tab**, the **Tablet PC Input Panel** appears.

If the Tablet PC Input Panel Tab  **does not appear,**

click **start > Control Panel > Hardware and Sound > Tablet PC Settings > Other** tab and select [**Go to Input Panel Settings**], select the “**Use the Input Panel**” in the **Options** window and then click **OK**.

Entering letters using the touch keyboard


Using the touch keyboard, you can enter letters by touching the corresponding keys on the keyboard that is displayed on the screen as you do with a normal keyboard.

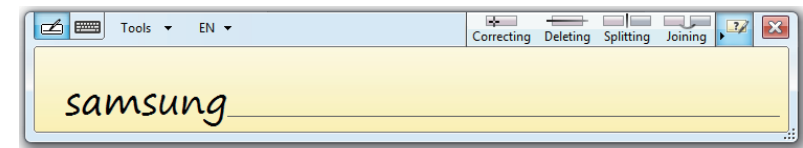
- 1 In the **Tablet PC input panel**, touch the **touch keyboard** icon  .
- 2 Enter letters by touching the corresponding keys on the screen.



Entering letters with the writing pad (hand-writing input mode)

In the touch screen, you can enter letters by directly writing letters with your finger on the **writing pad** input panel.


- 1 In the Tablet PC input panel, touch the **writing pad** icon  .
- 2 Write a letter in the input area of the **writing pad** in the touch screen and wait for a moment. Then the letter is converted to the most likely letter.



- 3 If you touch the **Insert** button, the converted letter is entered.



Modifying a letter

Over-write a new letter over an incorrectly recognized letter or touch the  above the letter and select a letter.

Touching the Launcher program enables you to easily play music and video files and operate downloaded applications by touching the screen with your finger on models with a touch screen.



- The Touch Launcher is only provided for models with a touch screen and the terms and conditions, as well as the appearance may differ depending on the model.
- For programs to operate normally, the computer must be connected to the Internet.

Using the Touch Launcher (Optional)

Click **Start > All Programs > Samsung > Play Touch** and select **Touch Launcher**  to launch it.

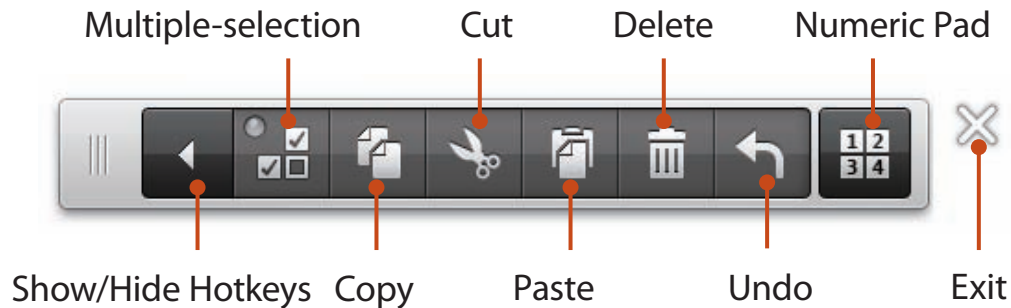


No.	Function	Description
1	Power Option	Shows the remaining battery charge and the currently configured battery mode.
2	Wi-Fi	Shows the Wi-Fi connection status. If the computer is connected to Wi-Fi, the connected AP name is displayed.
3	ToDo (Things to do)	Creates/Displays the ToDo list You can create a list of things to do.
4	Clock / Weather	Shows the time and weather information for the configured region.
5	Edit Mode	Add group, Add program From Desktop, Change wallpaper.
6	Page Indicator	Shows the position of the current page. To navigate the pages, click the Page Indicator or drag the screen to the left or the right.
7	Program area	Shows the program list. To launch a program, click the program icon.


This program helps you to use functions that cannot be easily used with touch operations more easily.

Launching the Touch Supporter


If you touch the screen with three fingers simultaneously the touch support program is launched.

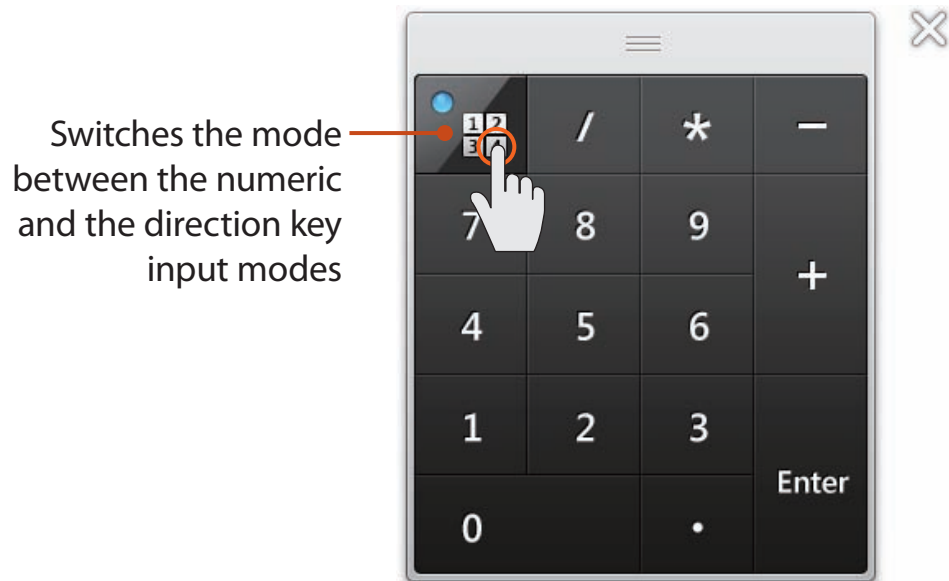


To exit the **Touch Supporter**, click  or touch the screen with three fingers again.

No.	Function	Description
1	Hot key	Multiple-selection This performs the same function as the Ctrl key. If you touch the multiple-selection function, the indicator is lit. When the multiple-selection is activated  , and you touch files with your finger one by one, all touched files are selected.
		Copy Copies the selected item.
		Cut Cuts the selected item.
		Paste Pastes the copied or cut item.
		Delete Deletes the selected item.
		Undo Cancels the last operation.
2	Numeric pad	If you touch the numeric pad button, the numeric and direction keyboard appears.

Using the Numeric Pad

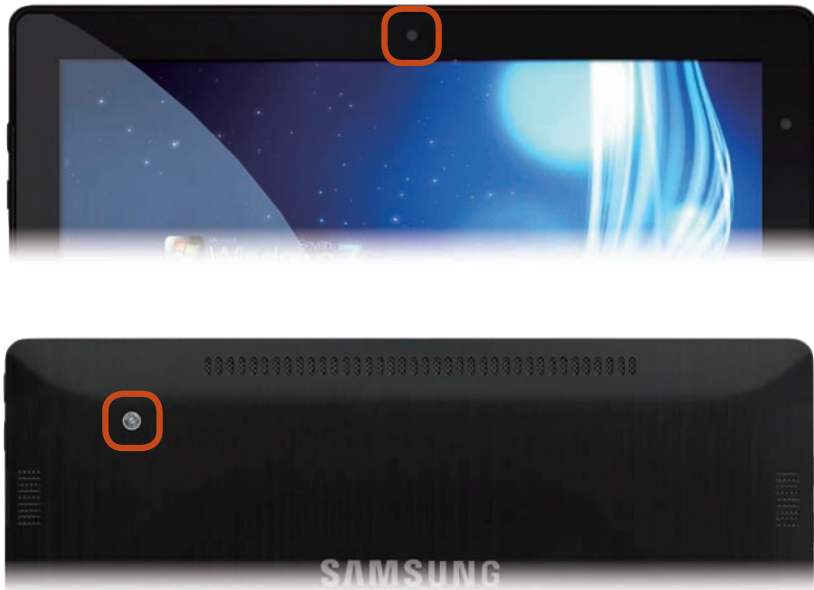
- 1 Click the **Numeric Pad** . The Numeric Pad appears on the screen.
- 2 If you touch the buttons of the **Numeric Pad**, the corresponding numbers or symbols are entered on the screen.



To select direction key input mode, touch .



To select numeric key input mode, touch .

This product has 2 cameras(Optional). One is at the front and the other is at the back. Using the touch camera program, you can conveniently take a picture or record a video using touch operations.




Using the Camera program

Click the **Touch Launcher** and launch the **Camera**.

Select camera mode (camera , video )

Select the front or rear camera Minimize Exit



1 2 3






Take a picture or make a recording

Select the resolution. View the captured picture or video.

Open the folder to save the file with Explorer.

The screenshot shows the Camera application interface. At the top, there are icons for camera and video modes. Below that are icons for selecting front or rear camera, minimize, and exit. The main area shows a live camera feed of a sunset. On the right side, there is a large red button for taking a picture or recording, and a smaller button for viewing the captured image. At the bottom left, there is a resolution selection icon showing '640 x 480'. At the bottom right, there is a folder icon for saving the file.

Using the camera

- 1 Touch the **Select Front/Rear Camera**  to select either the front or the rear camera that you will use.
- 2 To take a picture, select camera mode. To record a video, select video mode.
- 3 Touch the **Take a Picture**  / **Record**  to take a picture or record a video.
- 4 You can view the picture or recorded video through the **Preview** function  or the **Open the saved folder with Explorer** .



- You can record up to 20 minutes of video.
- If the free space of the computer reaches 500MB, video recording is stopped.



When you take a picture

- Do not take a picture or record a video without the consent of the person you are recording.
- Do not take a picture or record a video when it is prohibited.
- Do not take a picture or record a video where it may invade a person's privacy.

Using the Bluetooth Wireless Keyboard

You can connect and use an external type keyboard. This section describes how to connect a Bluetooth wireless keyboard provided optionally by Samsung Electronics.



- Bluetooth is wireless communications technology that allows access to nearby devices such as another computer, a cell phone, printer, keyboard, mouse, etc. without a cable connection.
- The Bluetooth supporting function is only available between devices (a computer, cell phone, PDA, printer, etc.) and the connection may be restricted according to the profile of the corresponding device.
- The keyboard is optional and may not be provided depending on the model.

- 1 Remove the battery compartment cover at the back of the computer.



- 2 Install the battery and close the cover.



- 3 If you press and hold the **keyboard power button** for 3 seconds after starting the computer, the Bluetooth LED will blink in blue.

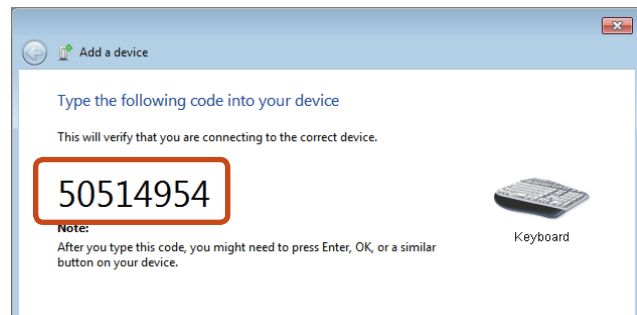
- 4 Click  > **Bluetooth Devices** > **Add a Device**.

- 5 Select the keyboard to be connected and click **Next**.



- 6 Enter the number displayed on the screen and press **Enter**. This will connect the keyboard.

When the keyboard is connected, the blue Bluetooth LED of the keyboard is turned off.



You can only use the micro SD card slot for micro SD cards.

You can use micro SD cards as removable disks and conveniently exchange data with digital devices such as a digital camera, digital camcorder, MP3, etc.



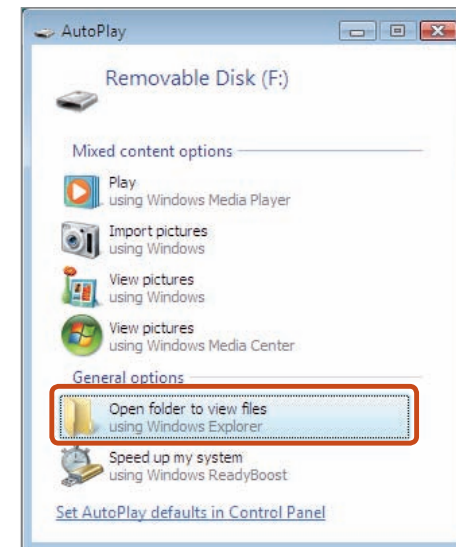
- You have to additionally purchase a micro SD card with the necessary capacity depending on your requirements.
- You can use a micro SD card just like any data storage device.
A copyright protection function is not supported.
- Since a card may fall out and become lost when you move the computer, store it separately.
- The figures used for the description are of a representative model. Therefore the figures may differ from the real ones.
- These descriptions are written based on Windows 7, the latest operating system. Therefore, some descriptions and figures may differ from your operating system. But as the usage is similar to other Windows operating systems, you can use these descriptions for reference.


Using the card

- 1 Insert the card into the **micro SD card slot** in the marked direction.



- 2 The card drive appears. Click **Open folder and view files**. If the window does not appear, click **Start > Computer**.




 If a window asking to scan and change appears, click **Continue Without Scanning**. This will proceed to Step 2 above.

3 You can save, move and delete data by double-clicking the corresponding drive.

You can only use the card after formatting it.




 The device name of the card drive may differ depending on your computer model.

To remove a memory card

Press the card until it pops up, then pull it out by holding the end of the card.

To format a memory card


When using the memory card for the first time, you must format the card before using it.

 Formatting a card deletes all data saved on the card. If the card includes data, backup the data before formatting it.

1 Click **Start > Computer**.

2 Right-click over a card drive with the touchpad and select **Format**.

3 Click **Start** to the formatting.

-  • To use a card to exchange data with a digital device such as a digital camera, formatting the data using the digital device is recommended.
- When you try to use a card, which is formatted in the computer, in another digital device, you may have to format the card again in the device.
 - If the write-protect tab is in the **Lock** position, you cannot format, write or delete data on the card.
 - Take care when you insert or remove a micro SD card. The micro SD card may be damaged when not treated carefully.

If you connect an external display device such as a monitor, TV, projector, etc., you can view the picture on the wider screen of the external device when you give a presentation or watch a video or movie.

There is an analog monitor port (RGB) and a micro digital video and audio port (Micro HDMI).

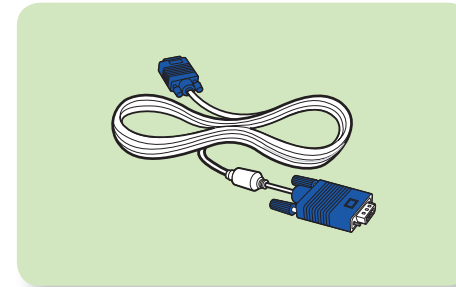
Since the visual quality is higher for Micro HDMI than VGA, if more than one port is available, connect the port that provides the higher visual quality.



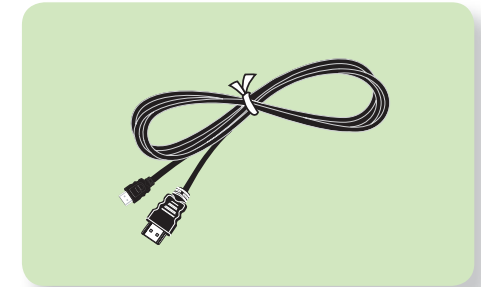
- Before you start, check the port and cable of the external display device and then connect the display device to the computer.
- Due to restrictions of the operating system the DualView function is not supported for Windows 7 Starter.

About the connection cable

Users should additionally purchase the necessary connection cables.



Analog Monitor (RGB) Cable



HDMI to micro HDMI Cable

Connecting to the monitor port (Optional)

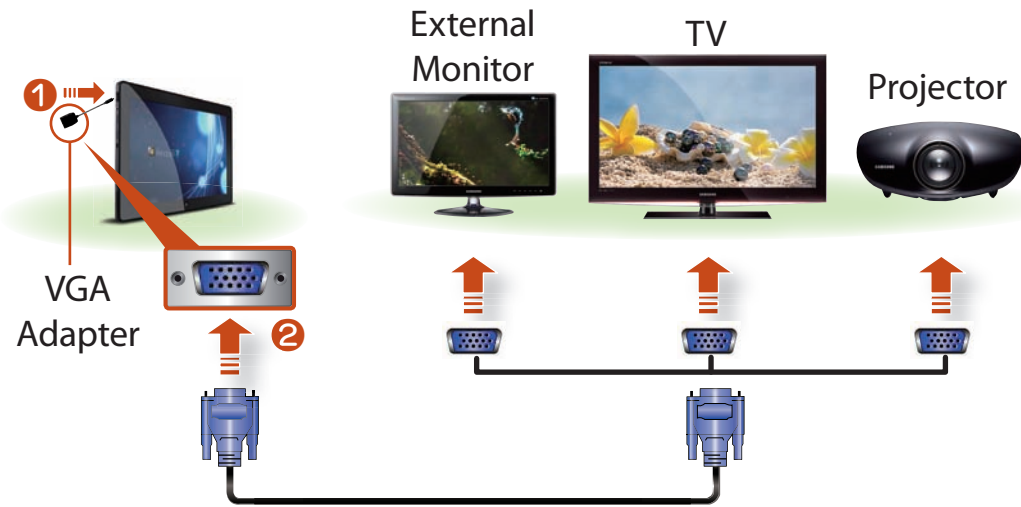
You can experience a wider screen by connecting the computer to a monitor, TV or projector with a monitor port.

You can give better presentations by connecting the computer to a projector.



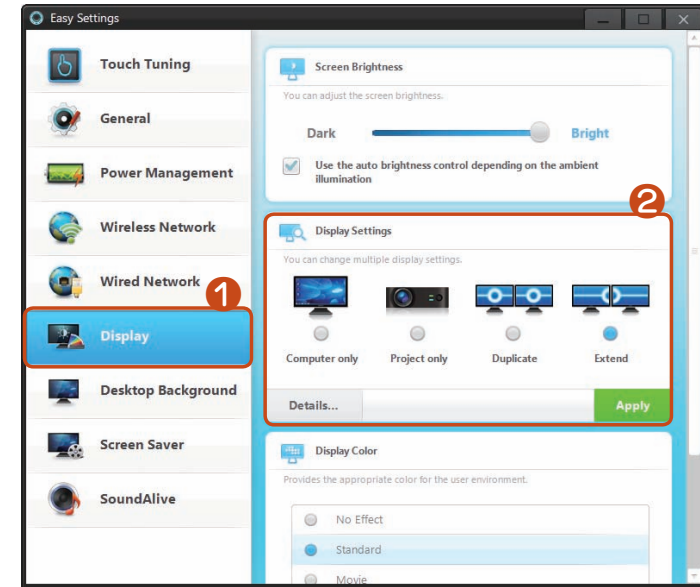
The VGA adapter is optional and may not be provided depending on the model.

- 1 Connect the **VGA adapter** to the USB port.
- 2 Connect the VGA cable (15-pin) to the connected VGA adapter and then connect the other end of the VGA cable to the VGA port of the monitor or the TV.



- 3 Connect the power cord of the connected monitor, TV or projector and turn the power on.

- 4 Launch the **Easy Settings**, click **Display > Display Settings** and select a mode.




- To use the function, the **Easy Settings** must be installed.
- **Alternatively, to set up dual view:**
Open the **Display Settings** window in the Control Panel, select **Monitor 2** and select the **Expand to fit to this monitor** checkbox to set dual view. For more detailed information, refer to the Windows online help.

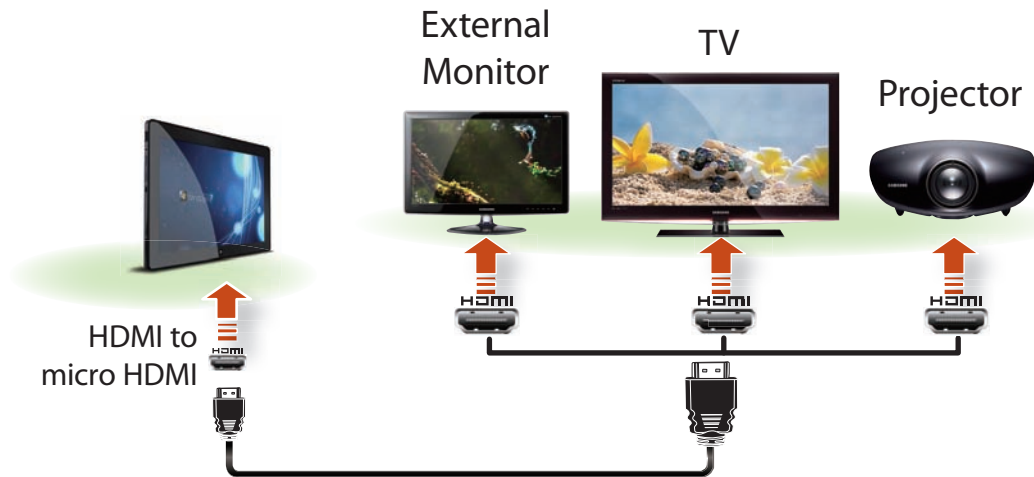
Connecting through the Micro HDMI port (Optional)


By connecting the computer to a TV with a HDMI port, you can enjoy both a high visual quality and a high sound quality.

After connecting a TV through Micro HDMI, you have to configure the screen and sound.

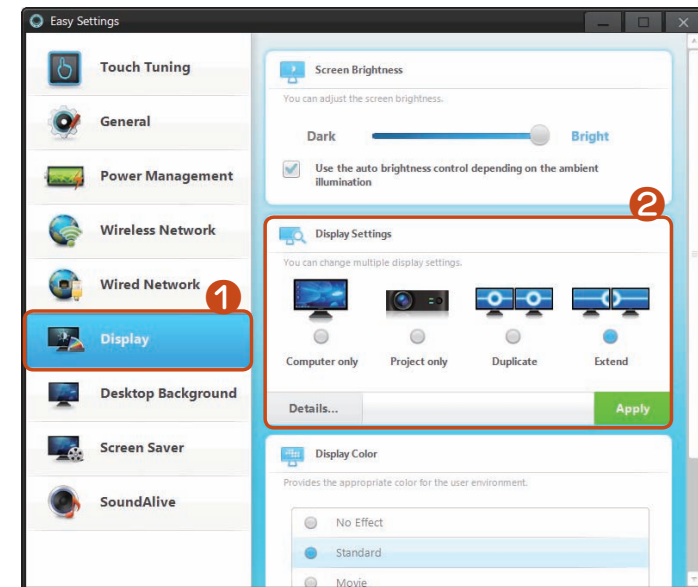
 You have to additionally purchase the HDMI to micro HDMI cable.

1 Connect the HDMI to micro HDMI cable to the HDMI port of the TV.



-  This is only supported for models that support a TV output port (HDMI).
- When a TV provides more than one HDMI port, connect the computer to the **DVI IN** port.
- When connecting the computer to a TV, switch the external input mode of the TV to **HDMI**.

2 Launch the **Easy Settings**, click **Display > Display Settings** and select a mode.





- External Monitor / TV is not supported in the DOS Command Prompt window.
- Simultaneous output to all 3 (LCD + CRT + HDMI) is not supported.
- To use the function, the **Easy Settings** must be installed.

Setting up HDMI TV video (Optional)

If the Desktop screen displayed on the TV does not fit to the TV screen, configure it as follows depending on the graphics card.



- You can view the graphics card type by selecting **Device Manager > Display adapters** and then clicking the + symbol.
- The screen images and terms may differ from actual product depending on the computer model and driver version.

► For Intel graphics cards

1 Right-click over the Desktop and select **Graphics Properties**.



If a window appears where you can select the mode, select **Basic Mode** and click **OK**.


2 Click **Display > General Settings**, select **Customize Aspect Ratio** in the **Scaling** field, fit the Desktop to the TV screen and click **OK**.




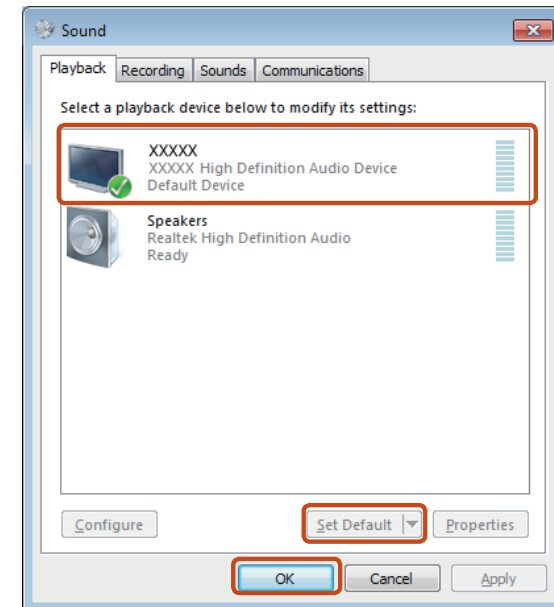
Setting up HDMI TV audio (Optional)



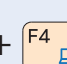
You can configure the sound of the computer to be played through the HDMI TV.


You have to configure the sound device in the Control Panel whenever you connect the HDMI TV in order to hear sound from the computer on the TV.

 The screen images and terms may differ from actual product depending on the computer model.

- 1 Right-click over the **Volume** Control icon  in the notification area at the bottom right of the Desktop and select **Playback Devices**.
(Alternatively, click the **Control Panel > Hardware and Sound > Sound**.)
- 2 Change the setting to Digital Audio (HDMI), HDMI Device or Digital Output Device, click **Set Default** and click **OK**.



-  • HDMI Output Device may not appear on the playback device list depending on the computer model.
In this case, turn on the TV, connect the TV to the computer using a HDMI cable and then switch to HDMI or LCD+HDMI Clone or LCD+HDMI DualView mode using the Shortcut Key( + ).
- To use the hot keys, you have to use a keyboard. Please connect a keyboard first.

 To listen to sound on the computer after disconnecting the HDMI TV, you have to set the Playback Device to Speakers.

You can save a file stored on a device onto the computer by connecting a digital device such as a camera, camcorder or mobile phone to the computer and using the file management functions.

Connecting and using a camera or camcorder

If a digital device such as a camera or camcorder is connected with the computer, it is recognized as a removable disk so that you can copy or move the files on the device.

1 Connect the USB port of the notebook computer and the USB port of the digital device such as a camera using the USB cable.

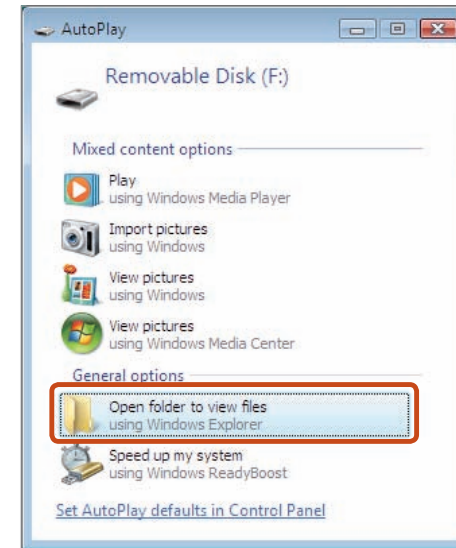


- Both the computer and the digital device must be turned on.
- You have to additionally purchase the USB cable necessary to connect the computer and the device.



2 The **Auto run** window appears. Click **Open folder and view files**.

If the window does not appear, click **Start > Computer**.



3 Double-click the corresponding drive. You can then save, move or delete data.

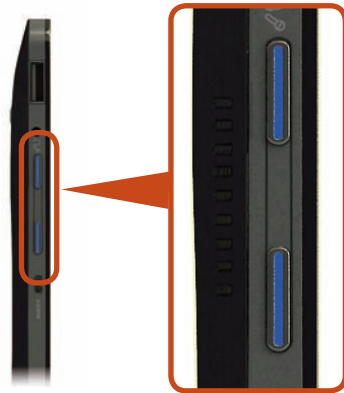


The device name of the card drive may differ depending on the model.


You can control the volume using the volume control buttons or the volume control program.

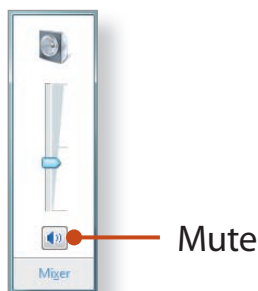
Adjusting the volume with the buttons

You can control the volume by pressing the volume control button on the left side of the computer.




Adjusting the Volume using the Volume Adjustment Program


Click the Volume icon  on the taskbar and slide the volume control bar to adjust the volume.

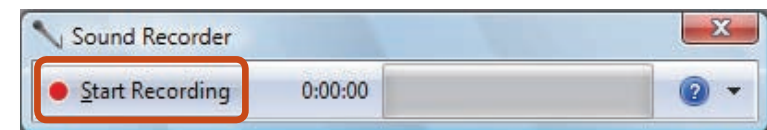


Using the Sound Recorder

The procedures to record sound using the Windows Recorder are described below.

 These descriptions are written based on Windows 7, the latest operating system. Therefore, some descriptions and figures may differ from your operating system. But as the usage is similar to other Windows operating systems, you can use these descriptions for reference.

- 1 Connect a microphone to the microphone jack. You can also use the internal MIC.
- 2 Right-click over the **Volume** icon  on the taskbar and select **Recording Device**.
- 3 Check if the microphone is set as the default recording device. If this is the case, it is already set as the default device. If not, right-click over the microphone and select **Set default**.
- 4 Click **Start > All Programs > Accessories > Sound Recorder** and click **Start recording** to start a recording.




Using SoundAlive

The SoundAlive function enables you to experience more stereophonic sound using stereo speakers.



- SoundAlive is only supported in Windows 7.
- The software programs provider may vary, depending on your computer model.
- In addition, some pictures may differ from actual product depending on the computer model and software version.

- 1 Right-click over the **Volume Control** icon  in the notification area at the bottom right of the Desktop and select **Playback Devices**. (Alternatively, click the **Control Panel > Hardware and Sound > Sound**.)
- 2 Right-click over the **Speakers** and select **Properties**.
- 3 Select the **SoundAlive** tab and select one of the modes.

► Basic Mode

Music	Select this mode to listen to music.
Movie	Select this mode to watch a movie.
Speech	Emphasizes voice over other sounds.
Silver	Silver mode is for people who have difficulty in hearing.

► Advanced Mode


Finely tuned 25 presets are arranged on a square according to their relative sound characteristics.

► User Mode

You can control a variety of sound effects.

Connecting and using a Ear-set / headset Jack

Using the Ear-set / headset jack

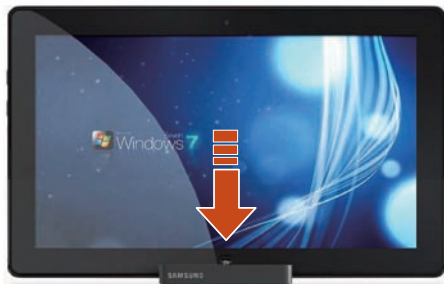
- 1 Right-click over the **Volume Control** icon  in the notification area at the bottom right of the Desktop and select **Playback Devices**. (Alternatively, click the **Control Panel > Hardware and Sound > Sound > Playback** tab.)
- 2 Select the **Speakers (Realtek High Definition Audio)**, click **Set Default** and click **OK**.

A wired network is a network environment used for a company network or broadband internet connection at home.

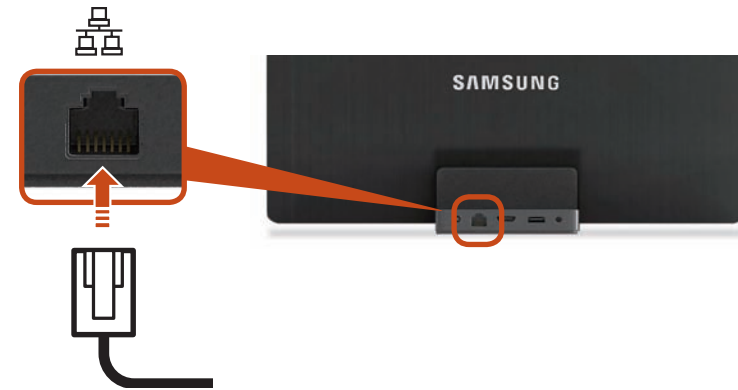


- The figures used for the description are of a representative model. Therefore the figures may differ from the real ones.
- These descriptions are written based on Windows 7, the latest operating system. Therefore, some descriptions and figures may differ from your operating system. But as the usage is similar to other Windows operating systems, you can use these descriptions for reference.
- To use a wired network, you have to connect the Slate PC Dock. The Slate PC Dock is optional and may not be provided depending on the model.

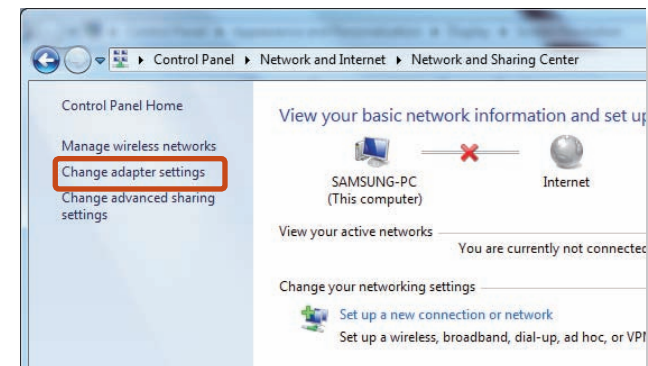
- 1 Connect the Slate PC Dock to the Slate PC Dock port of the computer.



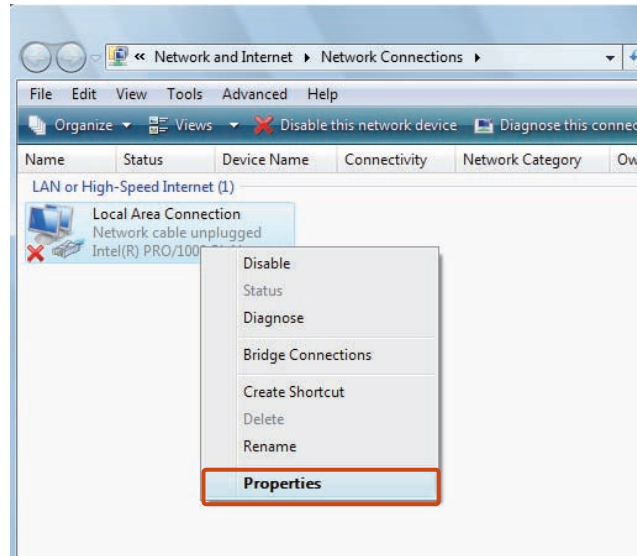
- 2 Connect the LAN cable to the LAN cable port of the Slate PC Dock.




- 3 Click **Start > Control Panel > Network and Internet > Network and Sharing Center** and click on **Change adapter settings** in the left menu pane.

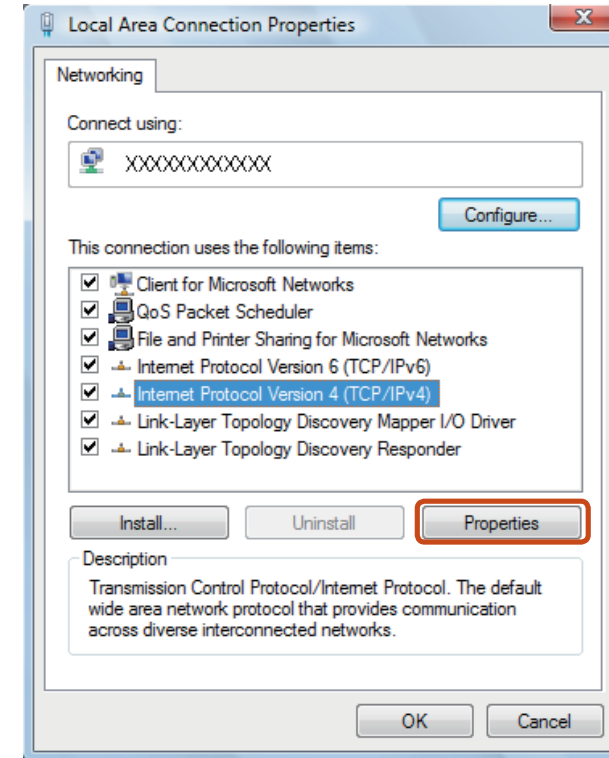



- 4 Select **Local Area Connection** and click the right button of the touch pad and select **Properties**.



 The LAN Device name may differ depending on your computer's Network Device.

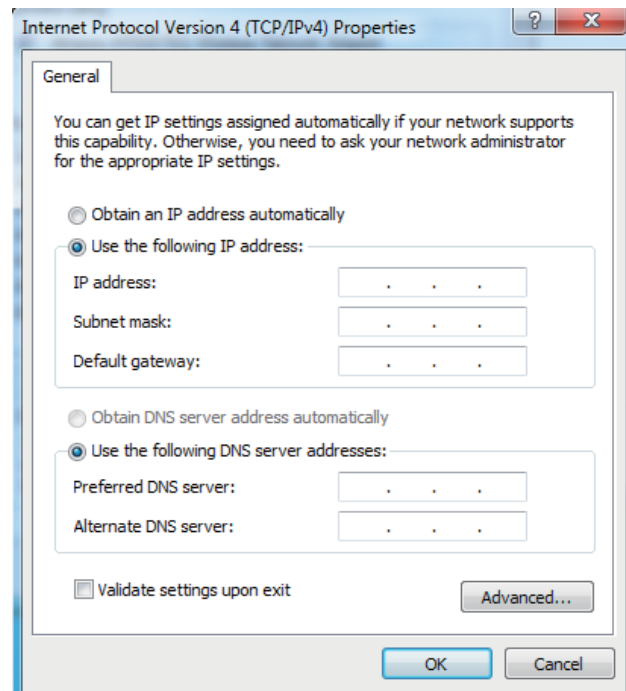
- 5 Select **Internet Protocol Version 4(TCP/IPv4)** from the list of Network Components and click **Properties**.



-  The Network Component name may differ depending on the Operating System Installed.
- To add a network component, click **Install** in the screen shown in the figure above. You can add clients, services, and protocols.

6 Configure the IP settings.

When using DHCP, select **Obtain an IP address automatically**. To use a static IP address, select **Use the following IP address**, and set the IP address manually.



When not using DHCP, ask your network administrator for the IP address.

7 When you have completed the settings, click the **OK** button. The network settings have been completed.

When connected to a 100Mbps/1Gbps wired LAN and the computer exits Sleep/hibernation mode, a message appears informing you of a connection to a 10Mbps/100Mbps wired LAN. This happens because when the computer exits standby/hibernate mode, restoring the network takes about 3 seconds. When the network is restored, it operates at 100Mbps/1Gbps.

When system is running on battery, some time it takes about 20sec after inserting LAN cable to be able to connect to internet. This symptom happen as a result of power saving feature to reduce battery consumption.

When system is running on battery, the Wired LAN speed is decreased automatically to reduce battery consumption. In such case, a 1Gbps /100Mbps LAN would function at 100Mbps/10Mbps speed.