

User Manual


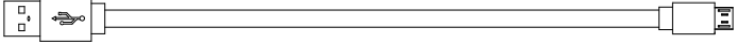
Optoma NuForce *Bluetooth* BE Live2 In Ear Headphones

Regulatory model name: APBELIVEN

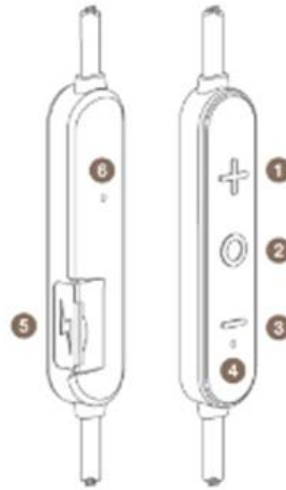
Contents

- **WHAT'S IN THE BOX**
- **BE Live2 EARPHONES**
- **THE BASICS**
 - Charging your BE Live2**
 - Checking battery level**
 - Bluetooth pairing**
 - Power On/ Power Off**
 - Wearing your BE Live2**
 - Handling phone calls**
 - Listening to music**
 - Pairing with a laptop**
 - Pairing with a Mac**
- **MISCELLANEOUS**
 - Restoring factory settings**
 - Voice prompts list**
 - Disclaimer**
 - FCC Interference statement**
 - Specification**

WHAT'S IN THE BOX

BE Live2 earphones (with inline controller and microphone)	
Silicon tips (in L/M/S)	
Cable loop for adjusting the length of cable	
Charging cable (Micro-USB)	
Basic user's manual	
Safety Instruction	

BE Live2 EARPHONES



1. Volume Up Button
2. Power/Function Button
3. Volume Down Button
4. LED Indicator
5. Charging port
6. Microphone

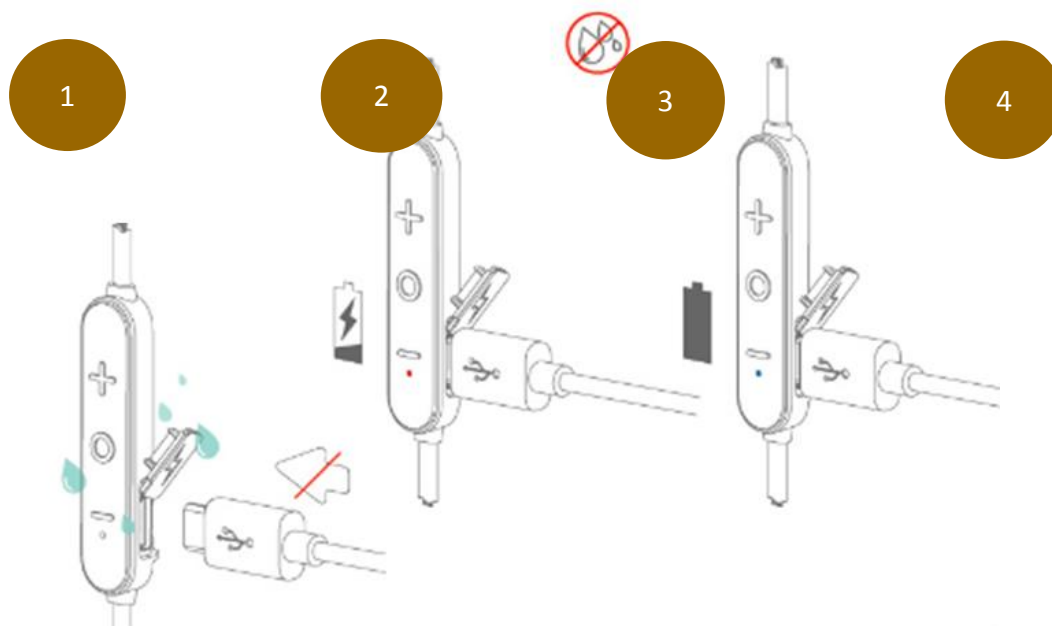
The BASICS

Charging Your BE Live2

Although your BE Live2 in-ear headphones come with a partially charged battery, it is recommended that you fully charge your BE Live2 before first use.

1. Open the charge port cover on the in line controller.
2. The charge cable should be connected to the charge port and either to a PC or a dedicated USB charger.
3. When charging, the LED indicator is red.
4. LED Indicator turns blue once charging is complete.

NOTE: It takes up to 2.5 hours to fully charge the BE Live2.



Checking Battery Level

You can check the battery level of your BE Live2 with the LED indicator

To check battery level:

1. Press the Power/Function, volume up, and volume down buttons simultaneously.
2. The LED indicator will flash red and blue simultaneously. The battery level will be indicated by the number of flashes, as described in the table below:

Number of Flashes Battery Level

Number of flashes	Voice prompts(enable)
2	Battery low
3	Battery at 50%
5	Full battery

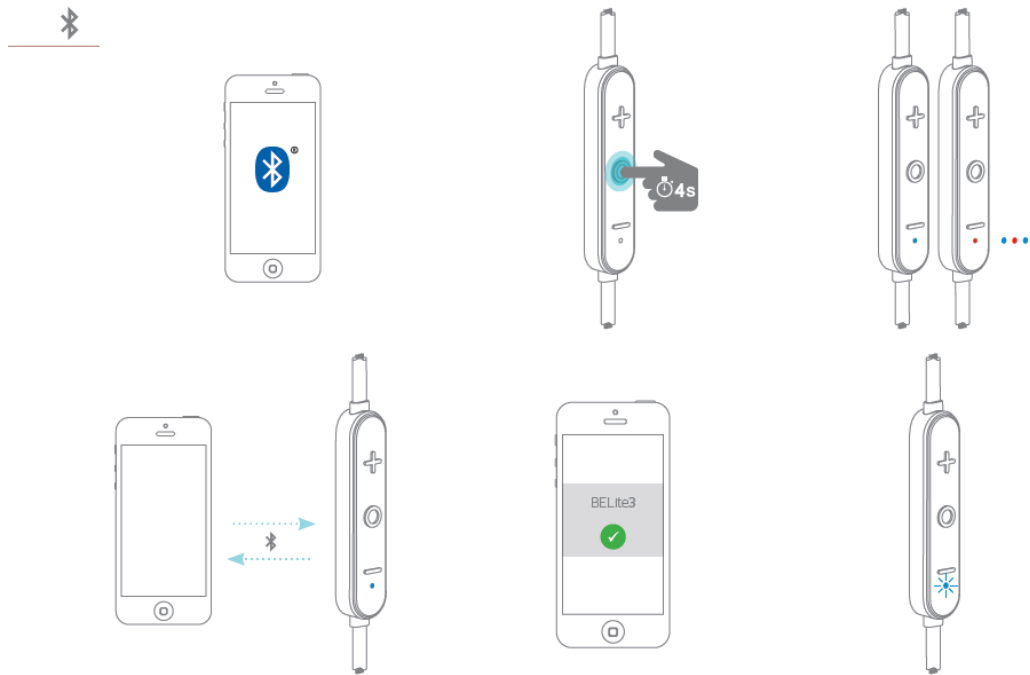
NOTE: When the battery level is very low, you will hear a beep or a “Battery Low” voice prompt from your BE Live2 every 2 minutes when the estimated battery reserve remaining time is under 15minutes.

IN ADDITION:

1. *When the Voice prompts are switched off you will hear a beeping sound (A short double tone) every two minutes.*
2. *Users with iOS devices and some Android models will be able to view the battery status on their device 's display*

**On some Android and all Windows operated devices you cannot check the battery level for your BE Live2 when you listen to music, in the middle of a phone call or in pairing mode.*

Bluetooth Pairing



Using your BE Live2 for first time

Pairing BE Live2 with source device

1. Press and hold the BE Live2's Power/Function button for 4 seconds until the LED indicator light flashes blue/red. Your BE Live2 is now in pairing mode.
2. Turn on *Bluetooth*[®] on your source device, then select "BE Live2" once it appears on the device list.

NOTE: Consult your source device's user manual for instructions on activating Bluetooth.

3. Once successfully paired, the LED indicator will flash blue and you hear "Device connected" (when voice prompt enabled) from your BE Live2, or a beep if voice prompt is not enabled.

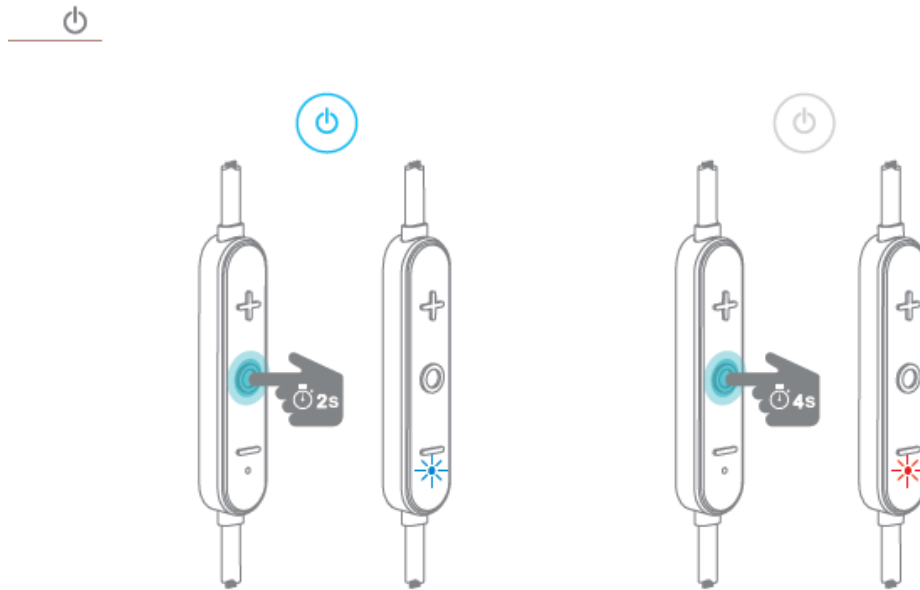
Please note:

- A. *You must always enter "Pair" mode from a powered-off state. Otherwise, pushing the Power/Function button for more than 4 seconds from a powered-on state turns the BE Live2 off.*
- B. *If left inactive in pairing mode, your BE Live2 will automatically power off after 3 minutes.*
- C. *Your BE Live2 can store pairing information for up to eight devices.*
To pair additional devices to your BE Live2 ensure that your BE Live2 is not concurrently connected to any device, then repeat the

steps 1,2,3 outlined above.

In case where your BE Live2 have already stored pairing information for eight devices and a ninth device is paired, the stored information for the very first device will be deleted.

Power On/Power Off



To power on your BE Live2, press Power/Function button for about 2 seconds until the LED indicator flashes blue and you hear the “Power on” when voice prompt is activated or a beep if the voice prompt is not used.

NOTE:

Once you have successfully paired the BE Live2 to a Bluetooth-enabled device, the BE Live2 will automatically connect with that device once it is powered on again. For more information check “Bluetooth Pairing” section.

If you have stored pairing information for multiple devices and more than one of those devices is Bluetooth enabled, the BE Live2 will automatically connect with the most recently paired device.

To turn the BE Live2 to OFF, push Power/Function button for about 4 seconds until the LED indicator turns red and you hear the “Power off” when voice prompt be activated or a beep if the voice prompt is not used.

Wearing Your BE Live2

To ensure a secure and comfortable fit when wearing your BE Live2:

1. Select right size of ear tips and install tips on BE Live2.
2. Cable management is placed to ensure a better fit of cable length.

Magnetic caps at the end of the earphones let users lock the earphones together and secure them around user's neck for ease of use.

Handling Phone Calls

When your BE Live2 are connected to a *Bluetooth*-enabled smartphone you can handle your phone calls directly using your BE Live2 in ear headphones.

The followings describe phone call options:

Call option	Status	Action
Answer a call	Incoming call	Tap the Power/Function button
Decline a call	Incoming call	Press the Power/Function button for 2 seconds
End a call	In a call/outgoing call	Tap the Power/Function button
Redial the last number	Standby/connected	Double tap the Power/Function button
Mute on or mute off microphone	In a call/outgoing call	Tap the Volume Up and Volume Down simultaneously
Switching handset/earphone voice	In a call	Press the Volume Up and Volume Down buttons simultaneously for 2 seconds
Adjust the volume		Tap the Volume Up or Volume Down button
Activate Siri (iOS) or Google Voice Search (Android)	Standby/Connected	Tap the Power/Function and Volume Up buttons simultaneously

Listening to Music


You can enjoy and control Audio through the in line controller on your BE Live2.

Audio option	Action
Play or pause audio	Tap the Power/Function button
Skip to next track	Press the Volume Up button for 2 seconds
Play previous track	Press the Volume Down button for 2 seconds
Adjust the volume	Tap the volume up or volume down button

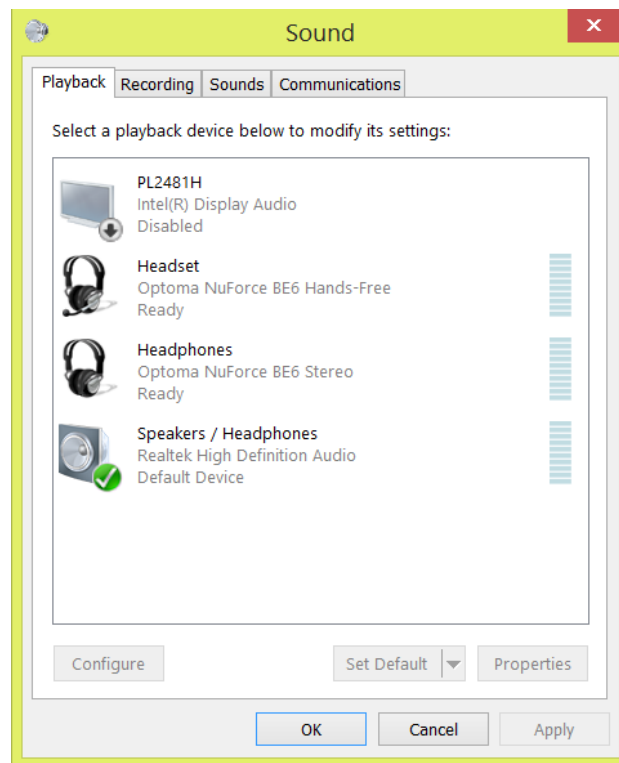
***Please note: when muting the BE Live2 or reactivating it from MUTE there will be a very slight delay**

Pairing with a Laptop

The connection instructions below apply to owners of Windows 7, 8, 8.1 and 10.

1. Power your PC/Laptop
2. Find "Bluetooth Settings"
3. Switch your laptop Bluetooth to "On"
4. Turn the BE Live2 to "Pairing Mode"
5. When the BE Live2 is discovered by your laptop left click on "Pair"
6. Right click on the speaker symbol at the bottom right side of the screen 
7. From the dropdown menu right click on the "Playback Device"
8. Please choose and right click the "BE Live2 stereo ready" (see image below text)
9. Click on HEADPHONES to set the "Headphones BE Live2" as default device

10. Press OK



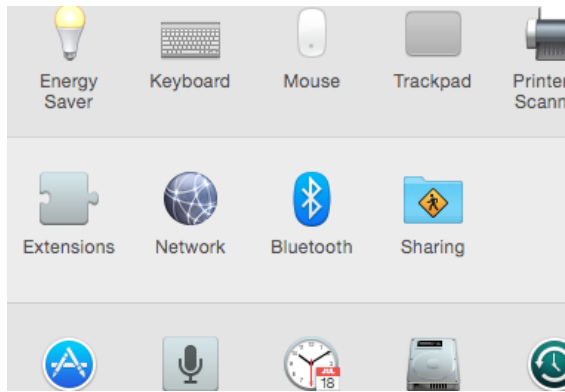
Pairing with a Mac

The connection instructions below apply to owners of all current and recent iOS versions

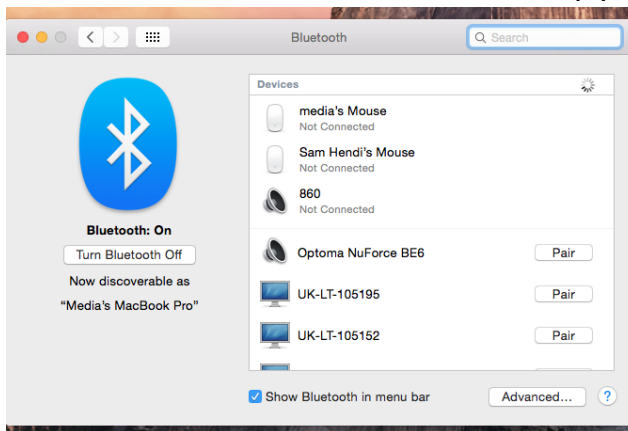
1. Power your Mac
2. Open "System Preferences"



3. Click on the Bluetooth symbol



4. Turn the BE Live2 to “Pairing Mode”
5. When the BE Live2 is discovered by your Mac click on “Pair”



6. Your Mac is now ready to play audio via the BE Live2

MISCELLANEOUS

Restore Factory Settings

When you restore the BE Live2 to its factory settings, the paired devices stored will be deleted.

To restore factory settings:

- 1 Ensure that your BE Live2 are not connected to any device.
- 2 Put the BE Live2 in pairing mode.
- 3 Press simultaneously the Power/Function, Volume Up, and Volume Down buttons for 2 seconds until the LED indicator flashes red five times and you hear five short tones from the BE Live2.

Because all pairing information is deleted after restoring factory settings, the BE Live2 will directly enter pairing mode once powered on.

Voice Prompts list

The BE Live2 are pre-loaded with English voice prompts

“Power On”

“Power Off”

“Full Battery”

“Battery at 50%”

“Battery Low”

“Device connected”

“Pairing Mode Activated”

“Voice Dial”

Disclaimer

Please be advised, the BE Live2 is equipped with the latest technology however functionality may vary by device.

FCC STATEMENT

1. This device complies with Part 15 of the FCC Rules. Operation is subject to the following two conditions:

(1) This device may not cause harmful interference.

(2) This device must accept any interference received, including interference that may cause undesired operation.

Note: The grantee is not responsible for any changes or modifications not expressly approved by the party responsible for compliance. Such modifications could void the user's authority to operate the equipment.

NOTE: This equipment has been tested and found to comply with the limits for a Class B digital device, pursuant to Part 15 of the FCC Rules. These limits are designed to provide reasonable protection against harmful interference in a residential installation.

This equipment generates uses and can radiate radio frequency energy and, if not installed and

used in accordance with the instructions, may cause harmful interference to radio communications. However, there is no guarantee that interference will not occur in a particular installation. If this equipment does cause harmful interference to radio or television reception, which can be determined by turning the equipment off and on, the user is encouraged to try to correct the interference by one or more of the following measures:

Reorient or relocate the receiving antenna.

Increase the separation between the equipment and receiver.

Connect the equipment into an outlet on a circuit different from that to which the receiver is connected.

Consult the dealer or an experienced radio/TV technician for help.

RF warning statement:

This equipment complies with FCC RF radiation exposure limits set forth for an uncontrolled environment.

CE

Max RF power

BT (2402-2480MHz) : 2.3-4.3dBm

RF exposure information: The EIRP power of the device at maximal case is below the exempt condition, 20mW specified in EN62479: 2010.

RF exposure assessment has been performed to prove that this unit will not generate the harmful EM emission above the reference level as specified in EC Council Recommendation(1999/519/EC).

CAUTION RISK OF EXPLOSION IF BATTERY IS REPLACED BY AN INCORRECT TYPE. DISPOSE OF USED BATTERIES ACCORDING TO THE INSTRUCTIONS

Excessive sound pressure from earphones and headphones can cause hearing loss.



Regulatory Conformance

Hereby, Optoma Corporation., declares that the radio equipment type [Bluetooth earphones, APBELIVEN] is in compliance with Directive 2014/53/EU.

The full text of the EU declaration of conformity is available at the following internet address: www.Optoma.com



Notice: This device may be used in each member state in EU

Optoma Corporation

address: 12F.,No.213,Sec.3, Beixin Rd.,Xindian Dist., New Taipei City, Taiwan

Specification

Connection type	Bluetooth 2.4Ghz	
Bluetooth type	V4.1	
Bluetooth profile	HSP 1.2, HFP 1.6, A2DP 1.2, AVRCP 1.4	
A2DP Codec	SBC, AAC	
Cable length	580 +/- 20 mm	
Driver Type	Dynamic	
Driver size	6 mm	
Impedance	16 Ohm	
Battery life (estimated)	Up to 10 hours	
Battery type	Lithium-ion battery, Cylindrical Type, Typical 3.7V/75mAh x2 pcs	
Microphone sensitivity	-42 +/-3 dB	
Frequency response	20Hz - 20kHz	
SPL	94dB +/-3dB at 1KHz	
power consumption	15mA at A2DP mode	
Range	Up to 10m	
Weight	12	Grams
Operation temperature	0--45 degrees Celsius	

