



AMT-2000 Asset Management Tag

Installer's Guide



Class A FCC Compliance

This equipment has been tested and found to comply with the limits for a Class A digital device, pursuant to part 15 of the FCC Rules. These limits are designed to provide reasonable protection against harmful interference when the equipment is operated in a commercial environment. This equipment generates, uses, and can radiate radio frequency energy and, if not installed and used in accordance with this information, may cause harmful interference to radio communications. Operation of this equipment in a residential area is likely to cause harmful interference in which case the user will be required to correct the interference at their own expense.

Class C FCC Compliance

This device complies with part 15 of the FCC Rules. Operation is subject to the following two conditions: (1) This device may not cause harmful interference, and (2) this device must accept any interference received, including interference that may cause undesired operation.

Unauthorized Equipment Modification

Any modifications to the AMS-2000 Asset Management System that is not expressly approved by Origin Data Systems may void authorization to use the system.

Publication Notice

This installer's guide is distributed on an *as is* basis without warranty either expressed or implied. Successful implementation depends solely upon the customer's ability to integrate each product into the total inventory of *in-house* products. While each offering is reviewed for its compatibility and maintainability, no assurance of successful installation can be given. The customer accepts full maintenance responsibility. (A full scope of software and hardware maintenance contracts are available to the customer.)

Origin Data Systems is a registered trademark of InterlogiX, Incorporated.

Micro/5-PX is a registered trademark of CASI-RUSCO.

Copyright 2001 Origin Data Systems

All Rights Reserved

Printed in the USA

Table of Contents

Introduction.....	1
Overview	1
Features	1
Installing/Removing Asset Tags.....	2
Overview	2
Installing Asset Tags	2
Removing Asset Tags	3
Specifications	4
Overview	4
Technical Support.....	5
Customer Support Mission	5
Support Centers	5
Headquarters	5
Technical support help line	5
Technical support hours	5
Repair Center Locations	6
CASI-RUSCO/Origin Data System's U.S. repair center	6
Web site and e-mail addresses	6

Introduction

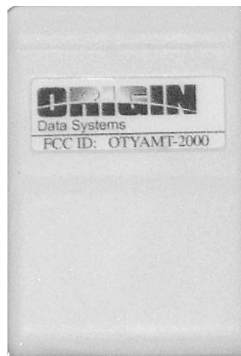
Overview

The AMT-2000 Asset Management Tag (Figure 1) is an integral part of the AMS-2000 system. The AMT-2000 tags communicate with asset sensing equipment like the SDS-2000 Standard Door Sensor to track and report asset movement and alarm conditions at common security checkpoints like doorway exits, stock rooms, shipping docks, etc.

The AMS-2000 system's patent-pending RFID (Radio Frequency Identification) positioning technology can simultaneously identify the location and direction of multiple asset tags, and also provide long-range detection and protection for shielded, jammed, and tampered asset tags.

Figure 1

AMT-2000 Asset Management Tag



Features

The following describes some of the AMT-2000 asset tag features:

- Protects valuable assets like laptops, PCs, portable equipment, product inventory, office equipment, furnishings, artwork, etc.
- Employs RFID technology to determine the asset's location and direction of movement
- Uses motion-sensor technology to detect movement and conserve battery life
- Protects assets using an industry-first capability that detects and reports shielded and hidden assets even when they are covered with metal materials like aluminum foil
- Detects off-site asset tag tampering and produces an alarm when the tag passes through a security area
- Mounts to assets with commercial-strength adhesive double-back tape

Installing/Removing Asset Tags

Overview

The following describes how to install and remove AMT-2000 asset tags.

Installing Asset Tags

Before installing an asset tag, make sure the tag's location on the asset does not restrict or limit the use of the asset. Also, inform site security personnel you are going to install asset tags, and that the AMS-2000 system may report tamper alarms. This should prevent unnecessary concern or action by the security personnel.

To install asset tags:

1. Gather:
 - Two clean, soft texture cotton cloths
 - Spray bottle of cleaning solution consisting of 50% isopropyl alcohol and 50% water
2. Spray a small amount of the cleaning solution onto one of the clean cloths.
3. Test the cleaning solution on the asset by wiping a very *small* amount on a corner or non-visible area to ensure it does not harm the surface. If it does not harm the surface, proceed to step 4.

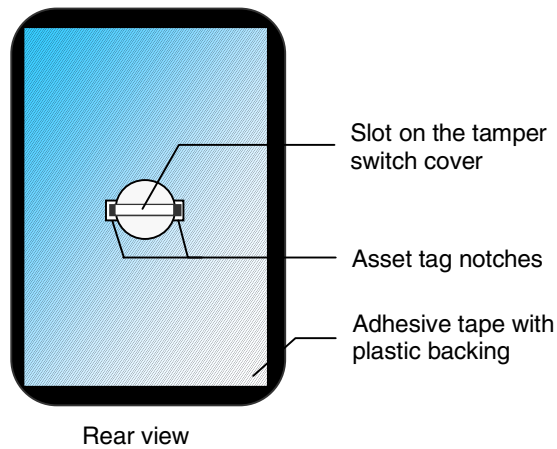
If the solution appears to harm the surface in any way, stop immediately and wipe the remaining solution off the asset with the dry cloth. Then, refer to the literature supplied with the asset to obtain the recommended cleaning solution before proceeding to the next step.
4. Clean the area on the asset where you are installing the asset tag. Then, wipe it off with the dry cloth.
5. Remove the tamper switch cover by aligning its slot with the notches on the rear of the asset tag as shown in Figure 2. Be aware that the AMS-2000 system will likely report a tamper alarm at this point.
6. Peel the plastic backing off the adhesive strip on the rear of the asset tag.
7. Press the asset tag to the asset's surface firmly for approximately 10 seconds.

Warning

Always test the cleaning solution to ensure it does not damage the asset's surface.

Figure 2

Removing the tamper switch cover



Removing Asset Tags

Before removing asset tags, you should contact and inform the site security personnel which asset tags you are removing. This will avoid undue concern if the AMS-2000 system reports a tamper alarm.

You will need a rigid flat blade tool like a screwdriver or putty knife to remove asset tags. The adhesive material used to prevent removal is extremely strong, and will require considerable force to pry and remove the tag from the asset. You should also be very careful not to scratch or damage the asset's surface when removing asset tags.

To remove asset tags:

1. Slide a flat blade tool slowly between the tag and asset's surface. Be aware that the security personnel will likely see the tamper alarm at this point.
2. Carefully pry the asset tag from the asset. Then, return the asset tag to the site security personnel for disposal.

Specifications

Overview

Figure 3 shows the AMT-2000 Asset Management Tag dimensions, and Figure 4 lists the specifications.

Figure 3

AMT-2000 Asset Management Tag

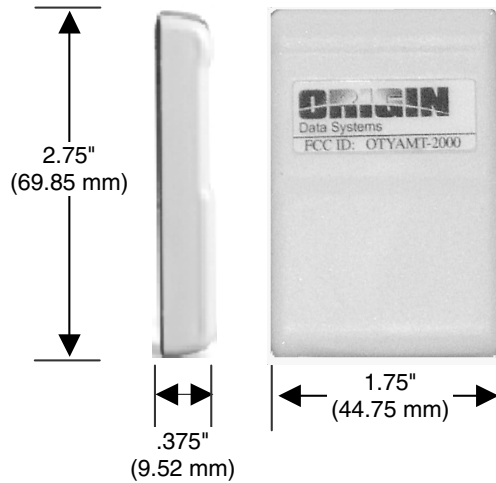


Figure 4

Specifications

Specifications	
Weight:	1.6 oz. (45.4 grams)
Dimensions:	2.75" (69.85 mm) x 1.75" (44.75 mm) x .375" (9.52 mm) HWD
Enclosure:	High impact molded plastic
Color options:	White and Black
Operating temperature range:	-30° F (-34.44° C) to +150° F (65.55° C)
Battery Life (approx.)	
Mobile Asset:	Three years
Stationary Asset:	Five years
Surface mounting	Commercial-strength adhesive double back tape

Technical Support

Customer Support Mission

The Customer Support organization is committed to providing support solutions to our Business Partners delivered in a responsive, reliable, professional manner by technically qualified personnel. Our mission is to work through your authorized Business Partner to be your premier provider of support services, and the focal point for all post-sale product issues. For immediate service, contact your local Business Partner.

You can also visit us at our customer support web site:

<http://www.CASI-RUSCO.com/service/support.asp>

Support Centers

Headquarters

791 Park of Commerce Blvd.
Boca Raton, FL 33487

Technical support help line

Phone: 561/998-6101
800/428-2733
Fax: 561/998-6224

Technical support hours

8:30 a.m. to 7:00 p.m. Eastern Standard Time; Monday through Friday (excluding holidays observed by CASI-RUSCO).

Repair Center Locations

CASI-RUSCO/Origin Data System's U.S. repair center

791 Park of Commerce Blvd.
Boca Raton, FL 33487
U.S.A.

Phone: 800/428-2733, ext. 6

Fax: 561/871-0776

Web site and e-mail addresses

Visit us at: <http://www.origindatasystems.com/> or

E-mail us at one of these addresses:

Support Center: Support@CASI-RUSCO.com

Training Center: Training@CASI-RUSCO.com

Product Documentation and Information: Info@OriginDataSystems.com



468000021 6/01 ©2001 Origin Data Systems All rights reserved.

All trademarks contained in this document are the properties of their respective owners. Origin Data Systems reserves the right to alter specifications without notice at any time.

791 Park of Commerce Blvd. 561/998-6100 561/912-5200

Boca Raton, Florida USA 33487 Fax 561/994-6572

www.origindatasystems.com