

**Bluetooth Keypad**

**DFB01**

**User's Manual**

## **About This Manual**

This manual is designed to assist you in installing and using the Bluetooth Keypad. Information in this document has been carefully checked for accuracy; however, no guarantee is given to the correctness of the contents. The information in this document is subject to change without notice.

## **Edition**

1<sup>st</sup> Edition,

## **Copyright**

© Copyright 2016

This document contains proprietary information protected by copyright. All rights are reserved. No part of this manual may be reproduced by any mechanical, electronic or other means, in any form, without prior written permission of the manufacturer.

## **Trademarks**

All trademarks and registered trademarks are the property of their respective owners.

## **FEDERAL COMMUNICATIONS COMMISSION STATEMENT**

This Equipment has been tested and found to comply with the limits for a class B digital device, pursuant to Part 15 of the Federal Communications Commission (FCC) rules. These limits are designed to provide reasonable protection against harmful interference in a residential installation. This equipment generates, uses, and can radiate radio frequency energy and, if not installed and used in accordance with the instructions, may cause harmful interference to radio communications. However, there is no guarantee that interference will not occur in a particular installation. If this equipment does cause harmful interference to radio or television reception, which can be determined by turning the equipment off and on, the user is encouraged to try to correct the interference by one or more of the following measures:

- ◆ Reorient or relocate the receiving antenna.
- ◆ Increase the separation between the equipment and receiver.
- ◆ Connect the equipment into and outlet on a circuit different from that to which the receiver is connected.
- ◆ Consult the dealer or an experienced radio/TV technician for help.

This device complies with Part 15 of the FCC rules. Operation is subject to the following two conditions: (1) this device may not cause harmful interference, and (2) this device must accept any interference that may cause undesired operation.

### **FCC RF Radiation Exposure Statement:**

1. This Transmitter must not be co-located or operating in conjunction with any other antenna or transmitter.
2. “ For body worn operation, this device has been tested and meets FCC RF exposure guidelines. When used with an accessory that contains metal may not ensure compliance with FCC RF exposure guidelines.

### **Notice 1**

You are cautioned that changes or modifications not expressly approved by the part responsible for compliance could void the user's authority to operate the equipment.

### **Notice 2**

This equipment has been tested and found to comply with the limits for a Class B digital device, pursuant to part 15 of the FCC rules. These limits are designed to provide reasonable protection against harmful interference in a residential installation. This equipment generates, uses and can radiate radio frequency energy and, if not installed and used in accordance with the instructions, may cause harmful interference to radio communications.

### **Caution:**

RISK OF EXPLOSION IF BATTERY IS REPLACED BY AN INCORRECT TYPE.

DISPOSE OF USED BATTERIES ACCORDING TO THE INSTRUCTIONS.

### **Introduction**

Thank you for purchasing the **Bluetooth Keypad**. This User's Manual contains information that will help to operate the device as well as answering questions about certain special keys and buttons. Please keep this manual in a safe place for future reference

### **System Requirements**

- Hardware: Bluetooth-enabled computer (with either built-in Bluetooth capability or external Bluetooth dongle )
- Operating System: Windows XP/7/8/10

### **Selecting Your Operating System**

This keypad is designed to work with both Windows and Macintosh OS's. Please select OS at this point by sliding the OS switch located at the bottom of the keypad to PC or Mac mode.

### **Package Contents**

- Bluetooth keypad
- User's manual

### **Power Switch**

There is a power switch at back of the keypad. When not in use, please turn to OFF to save battery power

### **Note:**

- 1. After 30 minutes non-operation, the keypad will go to low-power mode. Please press any key to wake up and wait the blue LED turn off before using.**
- 2. Power ON/OFF also need to press any key to reconnect and wait the blue LED turn off before using.**

### **Device pairing**

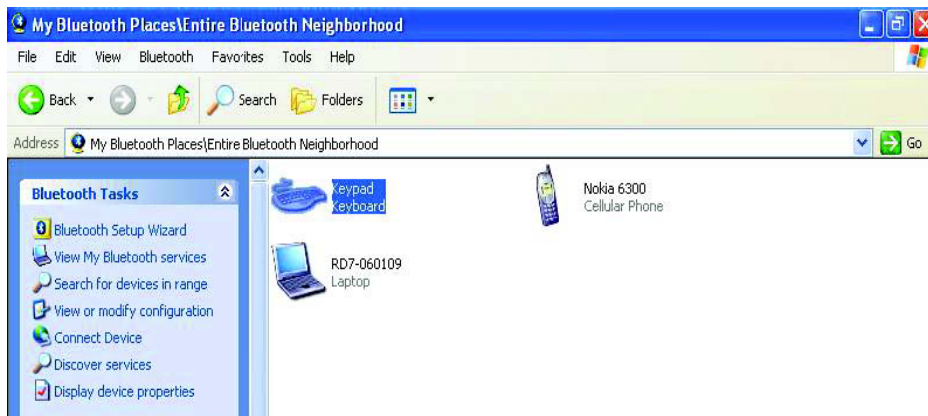
1. Turn on the Bluetooth connection on the device
2. Turn on the keypad power and press the "CONN" button. (Please make sure the blue LED is flashing)
3. The device will search automatically. When "Bluetooth Keyboard" shows, choose "Connect".
4. Enter the pin code that display on the device and press "Enter".
5. Start using the Bluetooth keyboard.

## Device pairing

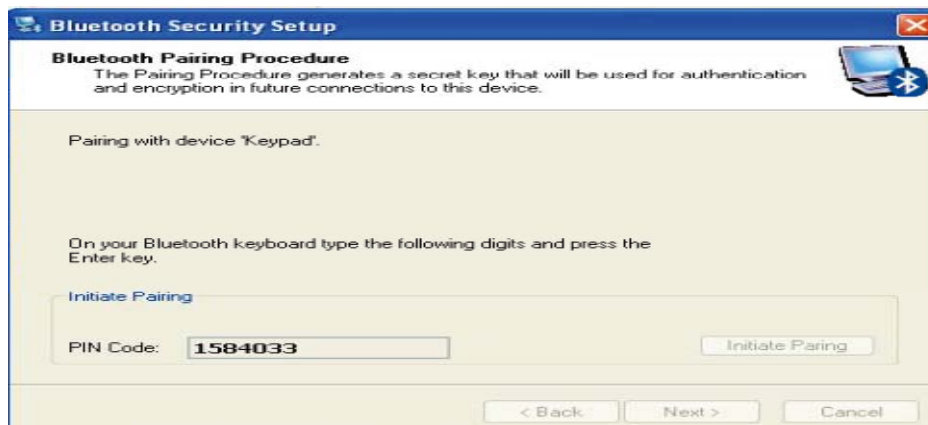
1. Right click on the BT icon and choose "Explore My Bluetooth Places"



2. Press the 'Conn' button at bottom of the Bluetooth keypad, then the led will start flashing.
3. Click the "Search for devices in range" option, the "keypad" will be found.



4. Double click on the "Keypad" icon, it will pop-up another windows. Just follow the screen display to input the Pin Code then press "enter" (the keypads enter).

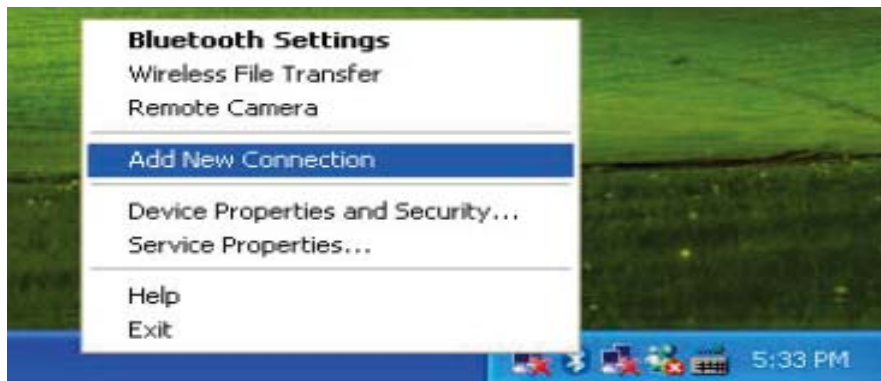


5. The Found New Hardware Wizard appears and the OS will install the driver automatically. No other steps are necessary.

6. The Bluetooth icon will become to . The Bluetooth keypad is ready to use.

**Toshiba software:**

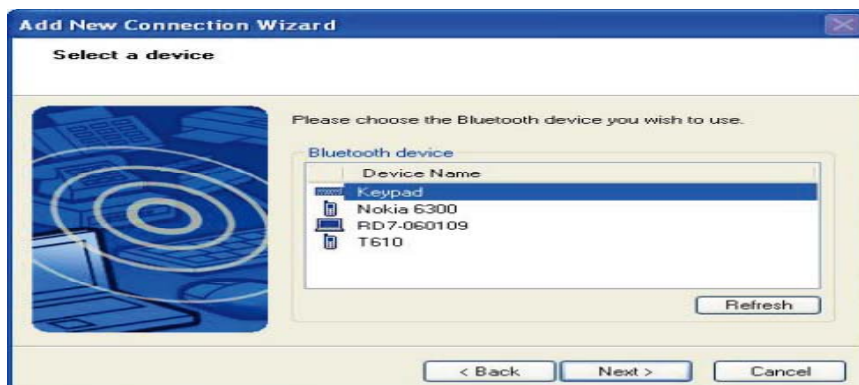
1. Right click on the BT icon and choose "Add New Connection"



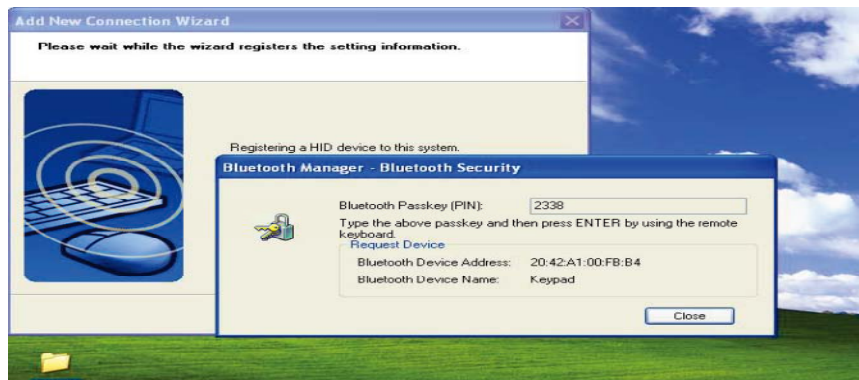
2. Press the 'Conn' button at bottom of the Bluetooth keypad, then the led will start flashing.
3. Click "Next"



4. Choose the "Keypad" device and click "Next"




5. Just follow the screen display to input the Pin Code then press "enter" (the keypads enter).



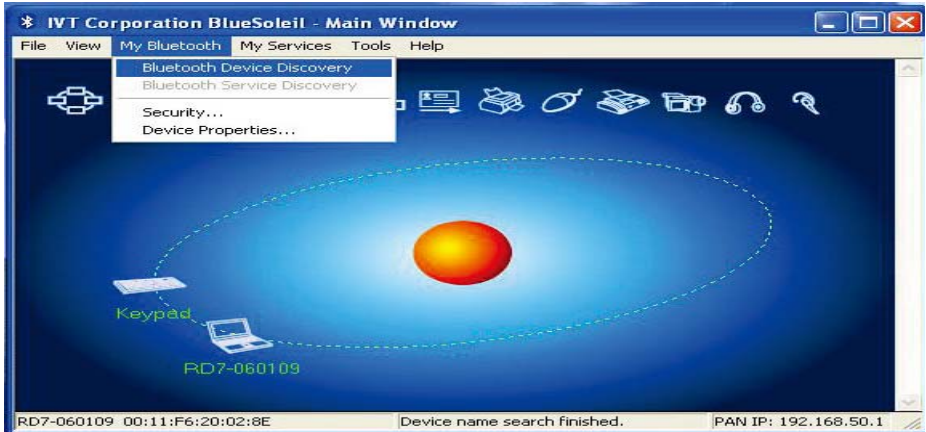
6. Click "Next"



7. The Found New Hardware Wizard appears and the OS will install the driver automatically. No other steps are necessary.
8. The Bluetooth icon will become to . The Bluetooth keypad is ready to use.

**IVT Software:**

1. Press the 'Conn' button at bottom of the Bluetooth keypad, then the led will start flashing.
2. Double click the BT icon on the system tray and it will pop-up a windows. Choose "My Bluetooth" " Bluetooth Device Discovery"



3. It will find the "Keypad" device. Right click on the keypad icon and choose "Connect" " Bluetooth Human Interface Device Service"



4. Just follow the screen display to input the Passkey then press "enter" (the keypads enter).



5. The Found New Hardware Wizard appears and the OS will install the driver automatically. No other steps are necessary.

6. The Bluetooth icon will become to . The Bluetooth keypad is ready to use.



