

Bluetooth Calculator Keypad

WKP-3020A

User's Manual

About This Manual

This manual is designed to assist you in installing and using the Bluetooth Keypad. Information in this document has been carefully checked for accuracy; however, no guarantee is given to the correctness of the contents. The information in this document is subject to change without notice.

Edition

1st Edition,

Copyright

© Copyright 2012

This document contains proprietary information protected by copyright. All rights are reserved. No part of this manual may be reproduced by any mechanical, electronic or other means, in any form, without prior written permission of the manufacturer.

Trademarks

All trademarks and registered trademarks are the property of their respective owners.

Warnings

This device complies with part 15 of the FCC rules. Operation is subject to the following two conditions (1) This device may not cause harmful interference and (2) this device must accept any interference received, including interference that may cause undesired operation.

Notice 1

You are cautioned that changes or modifications not expressly approved by the party responsible for compliance could void the user's authority to operate the equipment.

Caution:

RISK OF EXPLOSION IF BATTERY IS REPLACED BY AN INCORRECT TYPE.

DISPOSE OF USED BATTERIES ACCORDING TO THE INSTRUCTIONS.

System Requirements

- Hardware: Bluetooth-enabled computer (with either built-in Bluetooth capability or external Bluetooth dongle)
- Operating System: Windows 2000/XP/Vista/7/8 ; MAC OS X v10.4.6 or later.

Selecting Your Operating System

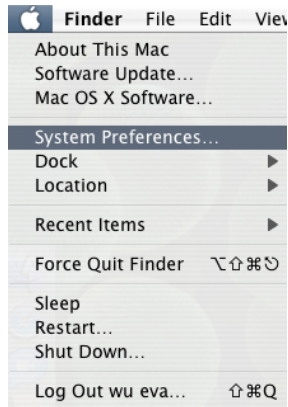
This keypad is designed to work with both Windows and Macintosh OS's. Please select OS at this point by sliding the OS switch located at the bottom of the keypad to PC or Mac mode

Package Contents

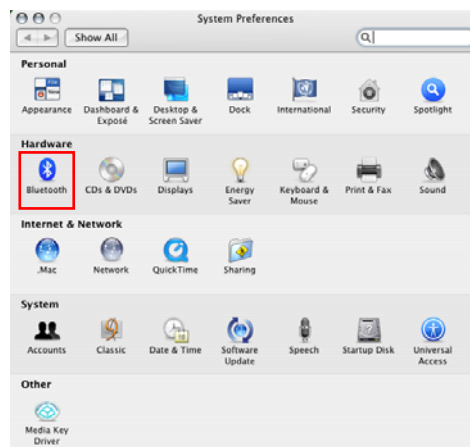
- Bluetooth calculator keypad
- 2 x AAA batteries
- User's manual

Device pairing on MAC

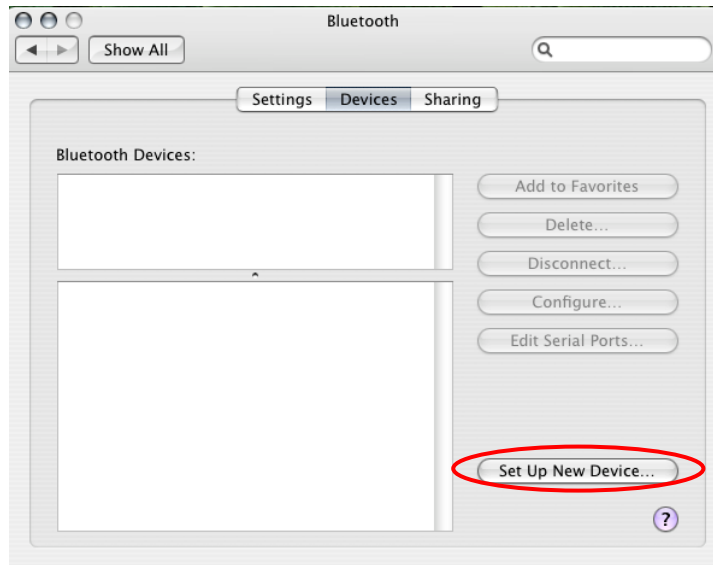
1. Click on the Apple icon and choose "System Preferences"



2. Click on the Bluetooth option.



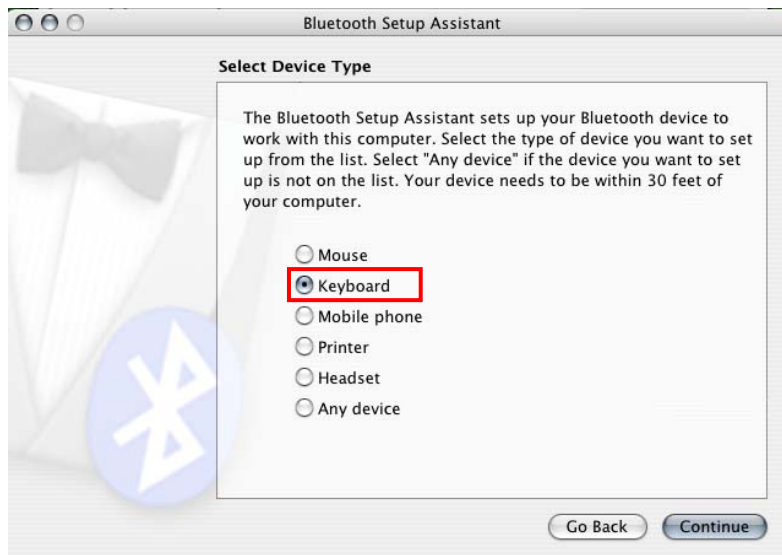
3. Click the “Set Up New Device” .



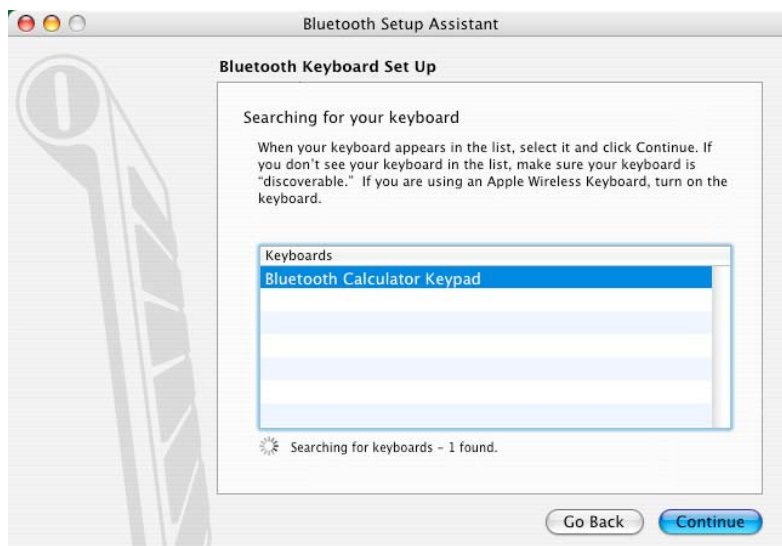
4. Click the “Continue” button.



5. Press the 'Conn' button at back of the Bluetooth keypad, then the led will start flashing. Choose "Keyboard" and click the "Continue" button.



6. Choose "Bluetooth Calculator Keypad" and click the "Continue" button.



7. Just follow the screen display to input the Passkey then press “enter”
(the keypad enter)



8. Click the “Quit” button. The Bluetooth keypad is ready to use.



Device pairing

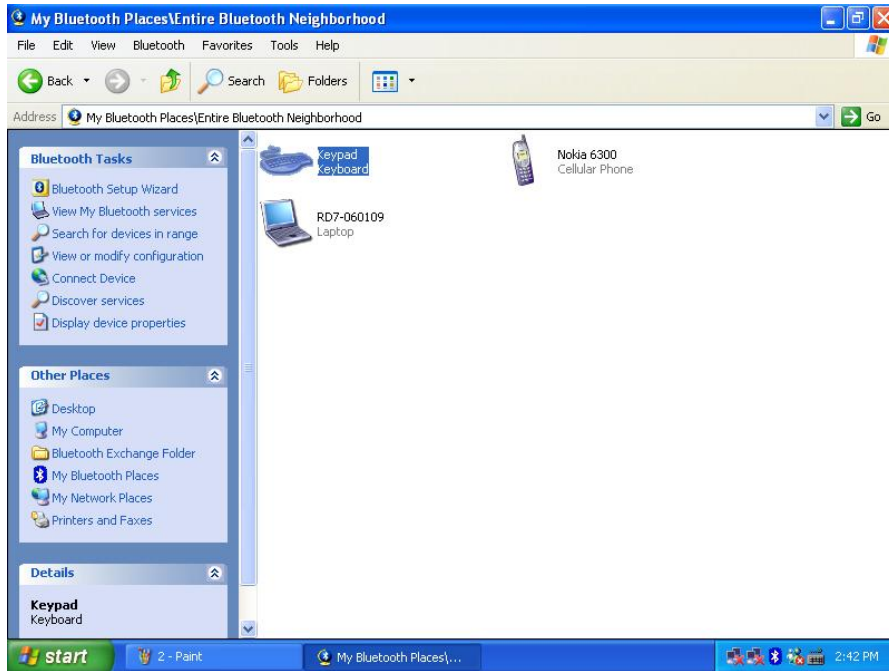
Widcomm software:

1. Right click on the BT icon and choose "Explore My Bluetooth Places"




2. Press the 'Conn' button at back of the Bluetooth keypad, then the led will start flashing.

3. Click the “Search for devices in range” option, the “keypad” will be found.



4. Double click on the “Keypad” icon, it will pop-up another windows. Just follow the screen display to input the Pin Code then press “enter” (the keypads enter).



5. The Found New Hardware Wizard appears and the OS will install the driver automatically. No other steps are necessary.
6. The Bluetooth icon will become to  . The Bluetooth keypad is ready to use.

Toshiba software:

1. Right click on the BT icon and choose “Add New Connection”

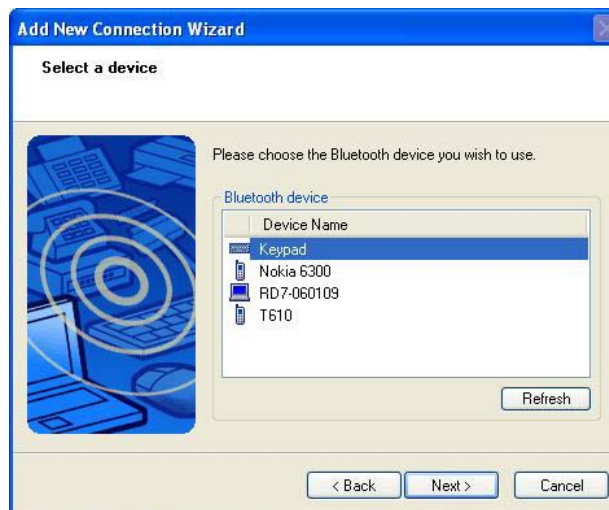


2. Press the ‘Conn’ button at back of the Bluetooth keypad, then the led will start flashing.

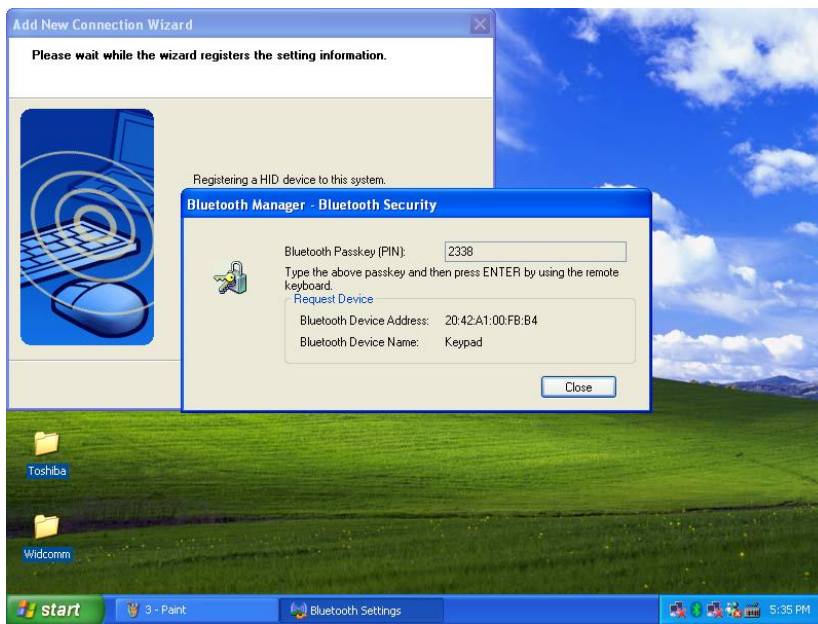
3. Click "Next"



4. Choose the "Keypad" device and click "Next"




5. Just follow the screen display to input the Pin Code then press “enter” (the keypads enter).



6. Click “Next”

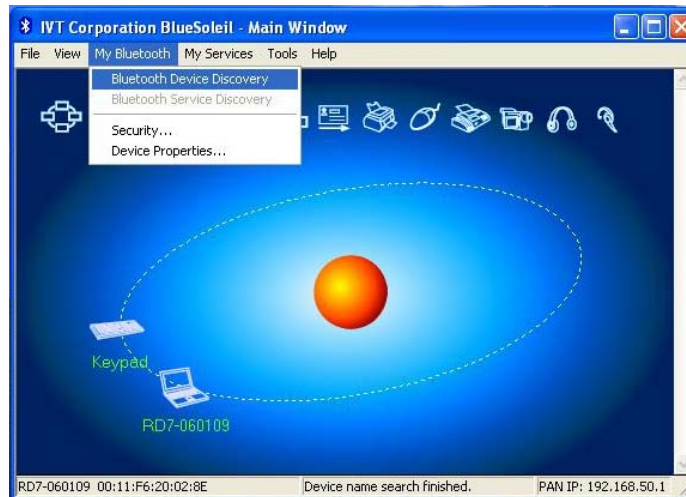


7. The Found New Hardware Wizard appears and the OS will install the driver automatically. No other steps are necessary.

8. The Bluetooth icon will become to  . The Bluetooth keypad is ready to use.

IVT Software:

1. Press the 'Conn' button at back of the Bluetooth keypad, then the led will start flashing.
2. Double click the BT icon on the system tray and it will pop-up a windows. Choose "My Bluetooth" → " Bluetooth Device Discovery"



- It will find the “Keypad” device. Right click on the keypad icon and choose “Connect” → “Bluetooth Human Interface Device Service”



- Just follow the screen display to input the Passkey then press “enter” (the keypad enter).



- The Found New Hardware Wizard appears and the OS will install the driver automatically. No other steps are necessary.

6. The Bluetooth icon will become to . The Bluetooth keypad is ready to use.

Key function

Calculator mode

Key Functions	Definition
M+	Adds the current display from the content of memory.
M-	Subtracts the current display from the content of memory.
MRC	i. First push, as MR key, transfers the contents of the memory register into the display register. ii. Second push, as MC key, clears the memory.
DECI	Calculator mode: Specifies the number of decimal places for rounding.
+/-	Switches the sign of the displayed value between positive (+) and negative (-).
%	Use this key in combination with a arithmetic operator keys to perform percent
MODE	Change mode between the calculator and the keypad status.
SEND	Send the calculation result to PC when the device is in calculator mode or in keypad mode.

About the Display

The display shows the number you input, calculation results, and various indicators showing the status of the calculator.

-MINUS	Negative value indicator
MEMORY	Independent memory indicator
ERROR	Error indicator
'	3-digit separator (apostrophe)
CALC	Indicate you are in calculator status
KEYPAD	Indicate you are in keypad status
GT	Grant total

Rounding Selector & Decimal Place Selector

➤ Press TAB To Rounding Selector

Specified the rounding system

F	Floating decimal point system, which displays the value without rounding.
0,2,4	Number of decimal places for the 5/4 setting of the Rounding Selector.
A	The "Add Mode" automatically adds a decimal point and two decimal places to all values, even if you don't input a decimal point. This mode is very useful when performing calculations in dollars or other monetary systems that require two decimal places. Two decimal places are not added in this mode if you press the DEL key while inputting a value, or for any operation other than addition and subtraction.

Wake up Function:

When the keypad's LCD turns off or the Bluetooth disconnect, just press the "Wake" key to wake it up.