

LEDVANCE
LEDVANCE LLC
200 Ballardvale Street
Wilmington, MA 01887

NAED **74099** PART NUMBER **E21265** ZNP/ZN2 **ZNP 3350719** **G** REV NUMBER OF COLORS **5** LITHO

DATE **9/29/16** STRUCTURE NUMBER **5.5" X 3.615"**

GRAPHIC ARTIST **db** LAM DOCUMENT **n/a**

This electronic file and derivations of this file are property of LEDVANCE LLC

An APPROVED proof must be obtained from Corporate Packaging prior to production

SPOT COLORS
PANTONE 021

PROCESS COLORS
C M Y K

SYLVANIA **SYLVANIA**

LIGHTIFY®
SMART CONNECTED LIGHT
Smart Switch
8 Functions / 4 Buttons
Wall Mountable

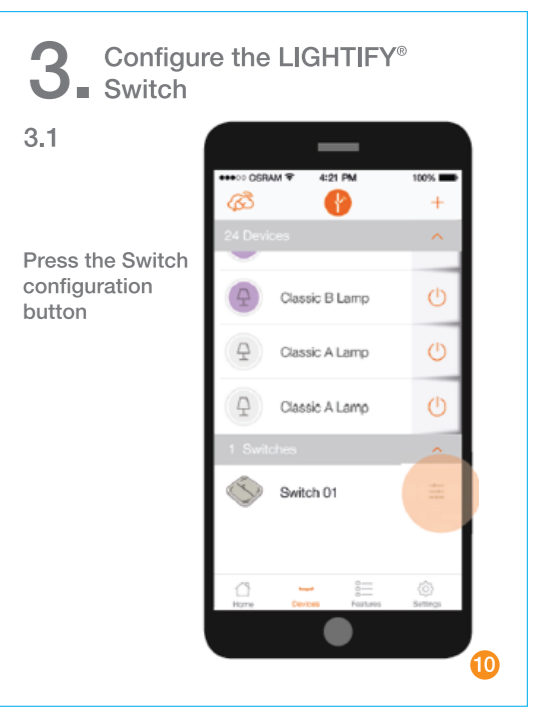
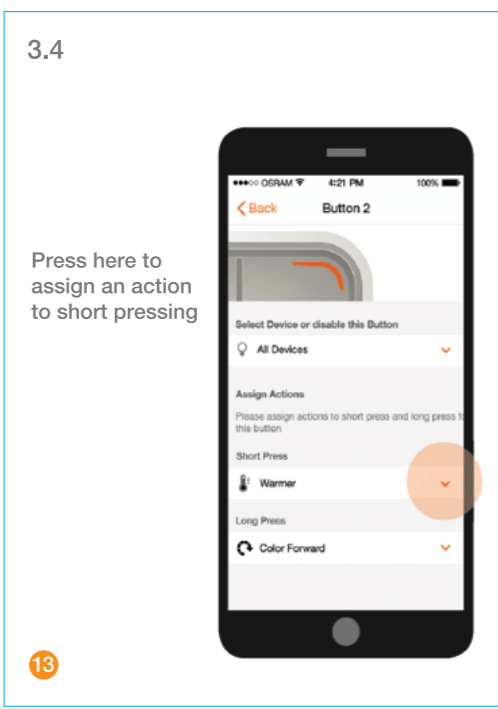
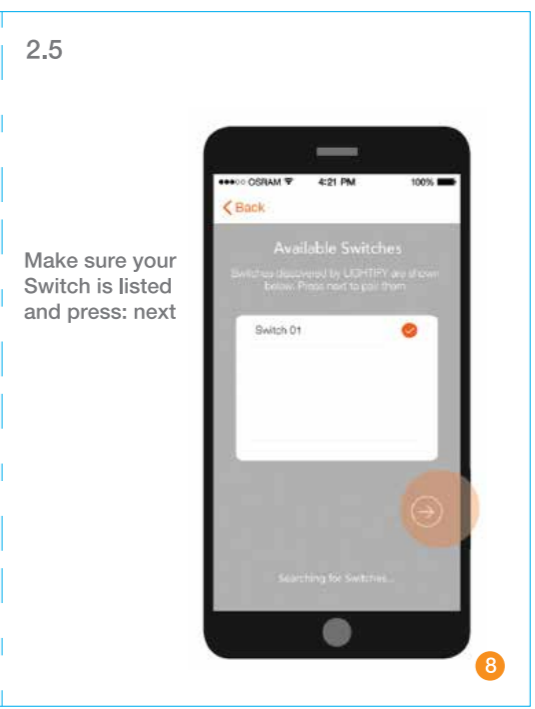
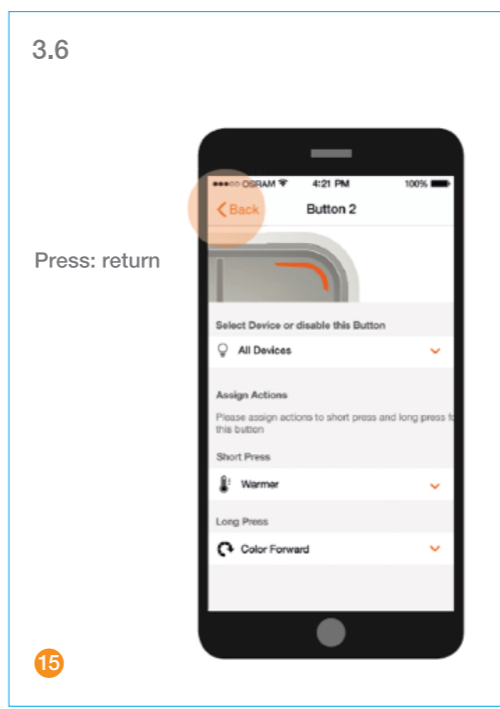
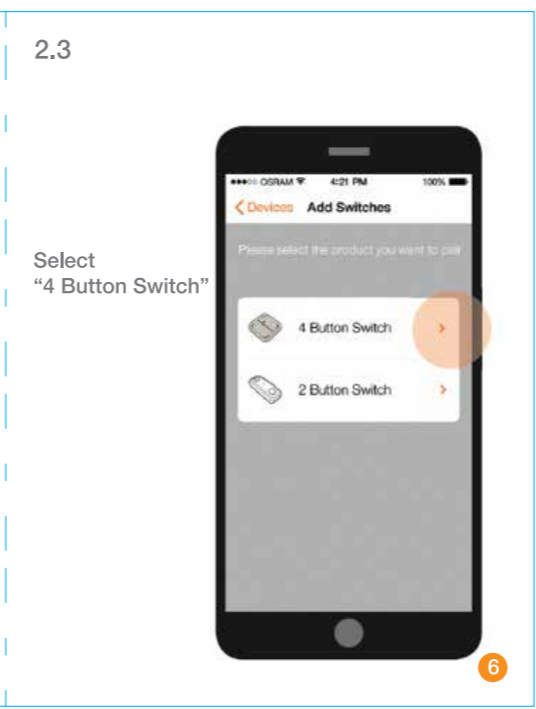
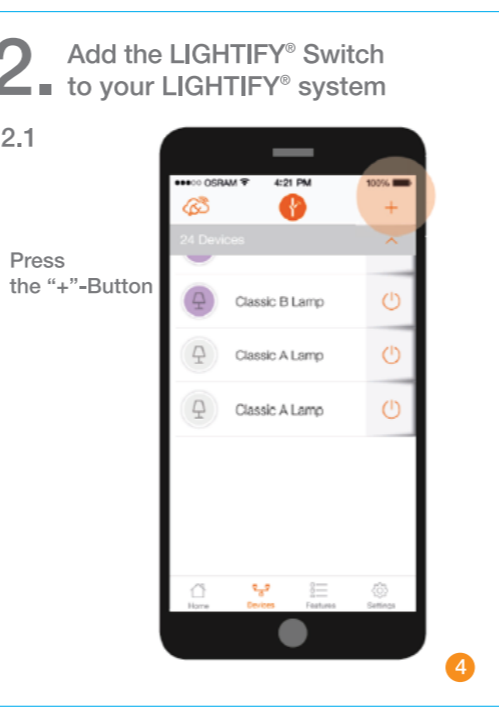
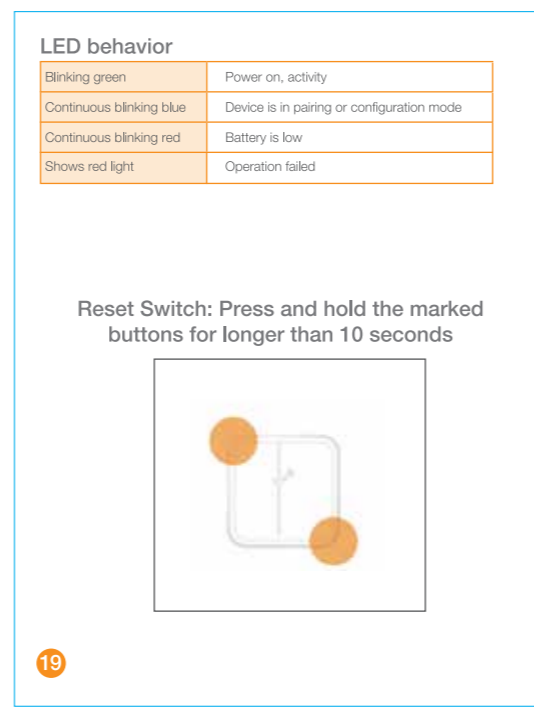
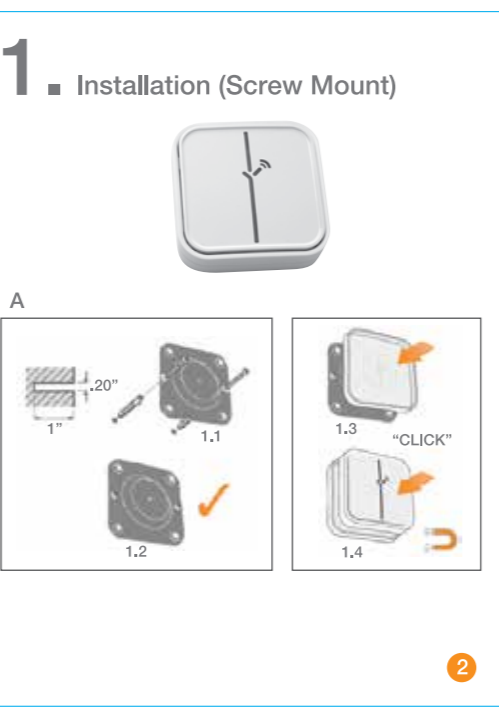
E21265
Imported by/Importé par:
LEDVANCE LLC
900 Tyrone Pike
Versailles, KY 40383 Made in China
LEDVANCE LTD./LTÉE
5450 Explorer Drive
Mississauga, Ontario L4W 5N1 Fabriqué aux Chine

Battery Included

SYLVANIA and LIGHTIFY are registered trademarks.

⚠ WARNINGS

- This Product is not a toy and should not be stored or left in a location accessible to young children.
- Observe proper polarity when charging batteries. Switch may not function properly if batteries are inserted incorrectly.
- To prevent danger from explosion or leakage, do not throw batteries into fire or expose them to excessive heat.
- This product contains a button battery. If swallowed, it could cause severe injury or death in just 2 hours. Seek medical attention immediately.
- To avoid possible fire, product damage, or early lamp failure this lamp should not be used in heat-producing appliances.
- Do not open, short circuit or mutilate batteries as injury could occur.
- Please preserve our environment by recycling Lithium batteries or disposing of them in accordance with local, state and federal regulations.
- To prevent danger from explosion or leakage, do not throw batteries into fire or expose them to excessive heat.
- Remove batteries if consumed or if product is to be left unused for a long time.
- Always purchase the correct size and grade of battery most suitable for the intended use.
- Replace all batteries of a set at the same time
- Clean the battery contacts and also those of the device prior to battery insertion.
- Ensure the batteries are installed correctly with regard to polarity (+ and -)
- Remove batteries from equipment which is not to be used for an extended period of time.
- Remove used batteries promptly.



SIDE 1

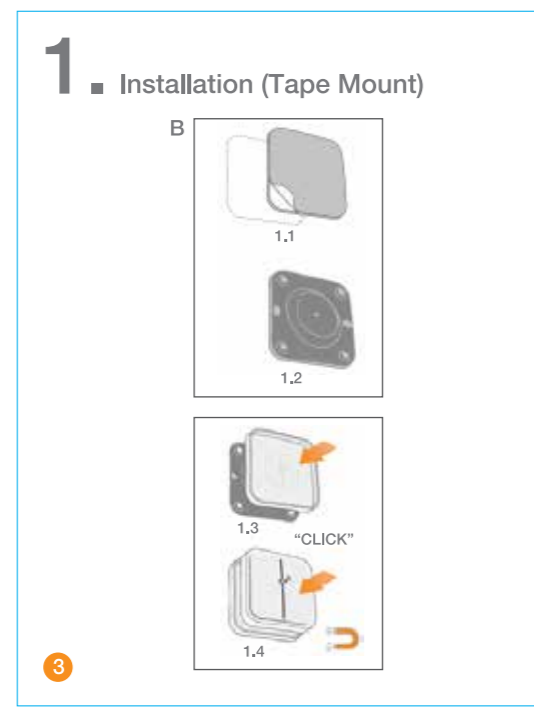
Package Contents/Dimensions

This device complies with Industry Canada license-exempt RSS standard(s). Operation is subject to the following two conditions: (1) this device may not cause interference, and (2) this device must accept any interference, including interference that may cause undesired operation of the device. Changes or modifications not expressly approved by the party responsible for compliance could void the user's authority to operate the equipment.

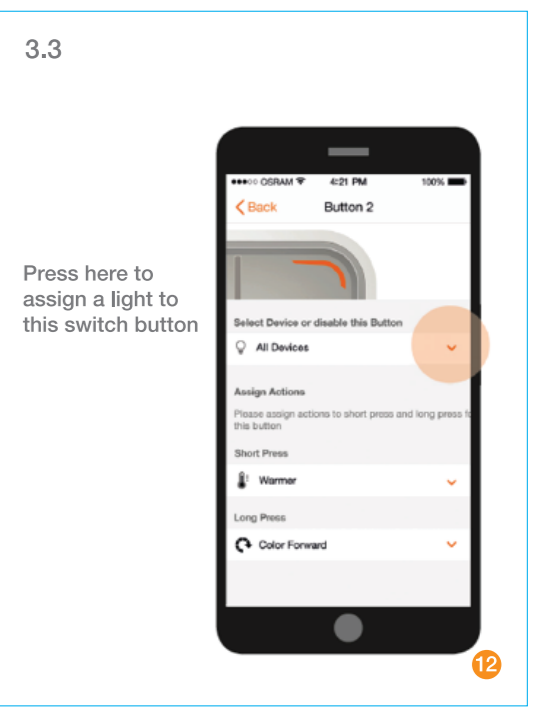
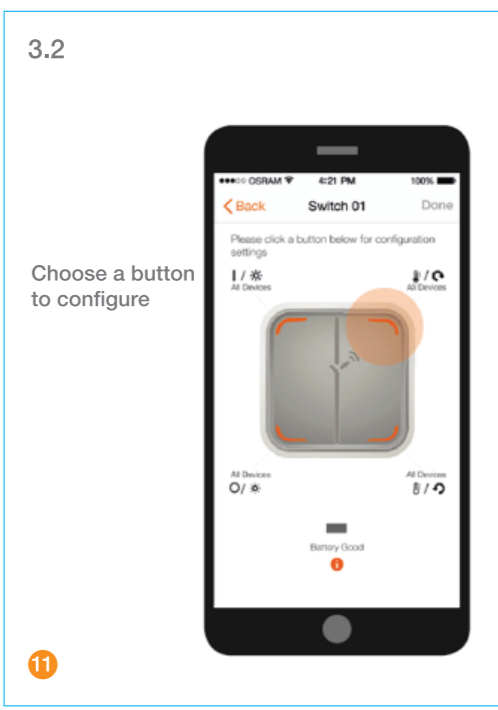
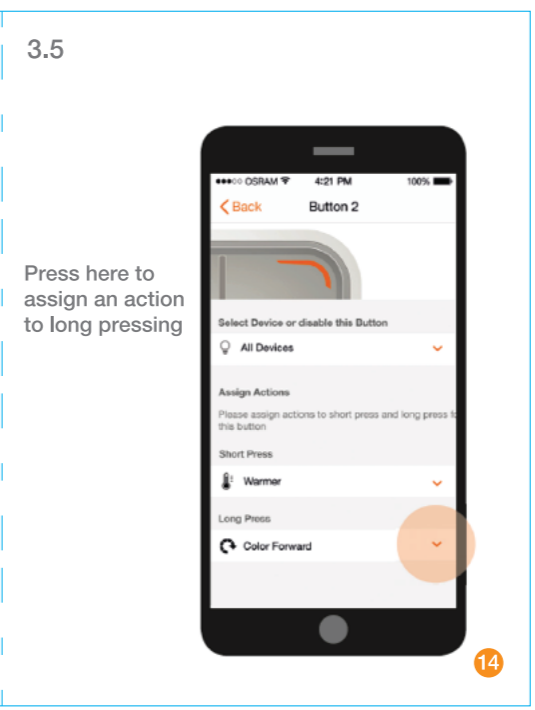
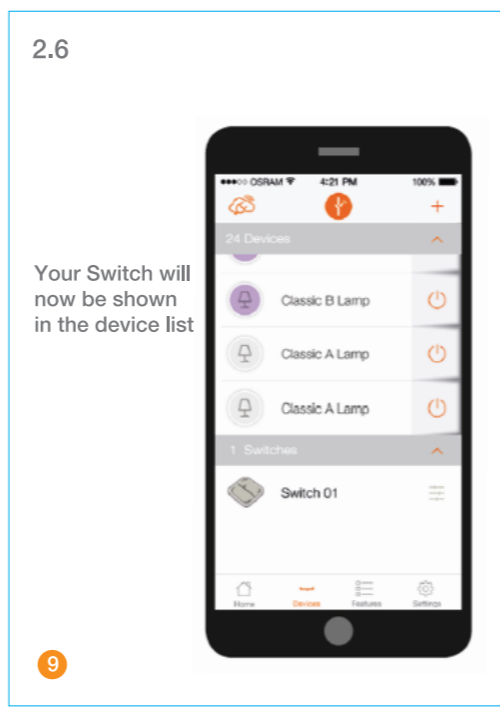
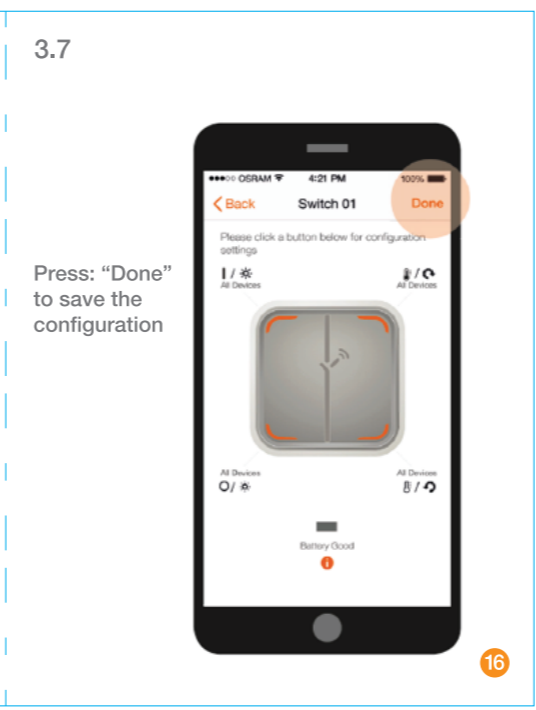
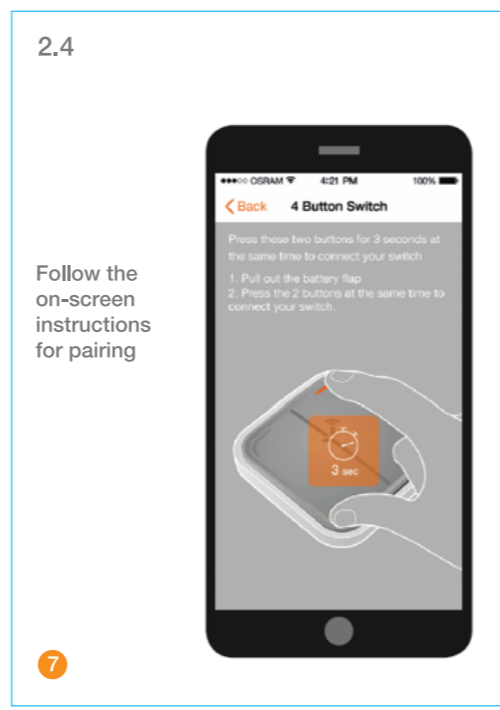
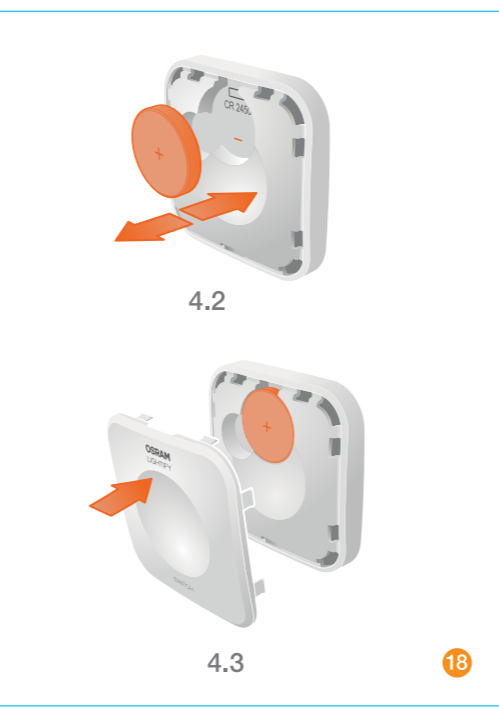
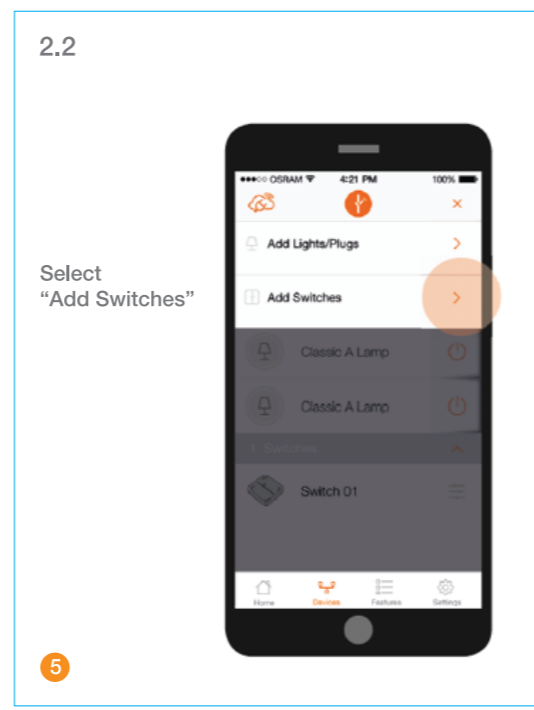
This device complies with Part 15 of the FCC Rules. Operation is subject to the following two conditions: (1) this device may not cause harmful interference, and (2) this device must accept any interference received, including interference that may cause undesired operation.

Note: This equipment has been tested and found to comply with the limits for a Class B digital device, pursuant to Part 15 of the FCC Rules. These limits are designed to provide reasonable protection against harmful interference in a residential installation. This equipment generates, uses, and can radiate radio frequency energy, and if not installed and used in accordance with the instructions, may cause harmful interference to radio communications. However, there is no guarantee that interference will not occur in a particular installation. If this equipment does cause harmful interference to radio or television reception, which can be determined by turning the equipment off and on, the user is encouraged to try to correct the interference by one or more of the following measures:

- Reorient or relocate the receiving antenna.
- Increase the separation between the equipment and receiver.
- Connect the equipment into an outlet on a circuit different from that to which the receiver is connected.
- Consult the dealer or an experienced radio/TV technician for help.



LIMITED WARRANTY The manufacturer warrants the product to be free from defects in materials and workmanship for two (2) years from date of purchase when used as directed. Failure to comply with Product warnings shall void the warranty. This warranty does not cover Product subject to accident, neglect, abuse, misuse, or acts of God. If Product fails to operate according to the warranty, the manufacturer will replace Product with the same or similar Product, at no charge. LABOR IS NOT INCLUDED. Product should be returned, together with proof of date of purchase, to the retail store where Product was purchased. For additional information, contact 1-800-554-0889; Fax: 866-832-9674; Email: warranty.service@sylvania.com. THIS IS THE EXCLUSIVE REMEDY AVAILABLE. LIABILITY FOR INCIDENTAL OR CONSEQUENTIAL DAMAGES IS EXPRESSLY EXCLUDED. SOME STATES AND JURISDICTIONS DO NOT ALLOW THE EXCLUSION OR LIMITATION OF INCIDENTAL OR CONSEQUENTIAL DAMAGES, SO THE ABOVE LIMITATION OR EXCLUSION MAY NOT APPLY TO YOU. THIS WARRANTY GIVES YOU SPECIFIC LEGAL RIGHTS, AND YOU MAY ALSO HAVE OTHER RIGHTS WHICH VARY FROM STATE TO STATE OR PROVINCE. THIS WARRANTY APPLIES TO CUSTOMERS PURCHASING THE PRODUCT FOR RESIDENTIAL USE ONLY.



SIDE 2