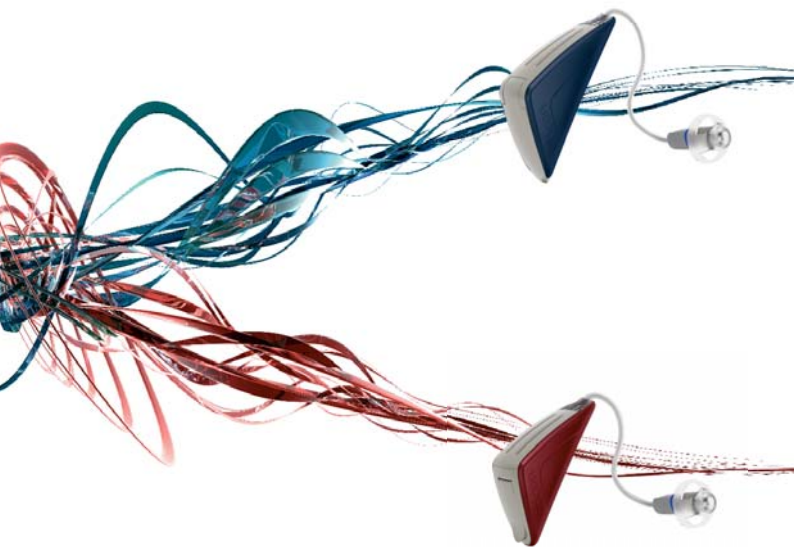


Oticon ♦ Dual

INSTRUCTIONS FOR USE



oticon
PEOPLE FIRST

Thank you

Thank you for choosing our product as your means to better hearing.

To support your efforts, we have put great care and attention into making sure that your new hearing instruments are of the highest quality and that they are easy to use and maintain.

We recommend that you read this manual carefully to achieve the maximum benefit of your new hearing instruments.

Congratulations on your decision to actively improve your hearing with today's most advanced hearing technology.

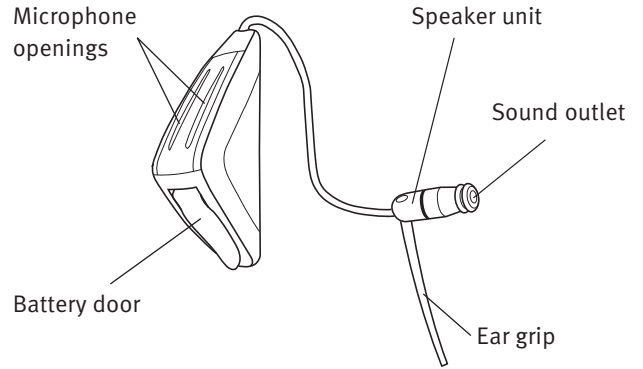
Important Notice

Please familiarise yourself with the entire contents of this booklet before using your hearing instruments. It contains instructions and important information about the use and handling of your instruments and batteries.









Contents

Instrument View	5
Turning your instruments ON and OFF	6
Putting on the hearing instrument	8
Changing batteries	10
AutoPhone	12
Caring for your hearing instrument	14
Daily maintenance Micro Moulds	16
Daily maintenance with domes	20
Using your hearing instrument	24
Common problems and their solutions	30
International warranty	34
Warnings	Yellow pages

Instrument View



Your ear piece:

- | | | | |
|---|--|--|---|
| Open dome: 6mm <input type="checkbox"/> |  | Power dome: 8mm <input type="checkbox"/> |  |
| 8mm <input type="checkbox"/> |  | 10mm <input type="checkbox"/> |  |
| 10mm <input type="checkbox"/> |  | 12mm <input type="checkbox"/> |  |
| Micro mould <input type="checkbox"/> |  | Battery size: 10 <input type="checkbox"/> | |
| Plus dome <input type="checkbox"/> |  | Battery size: 312 <input type="checkbox"/> | |

Turning your instruments ON and OFF

Turn **ON** your hearing instrument by closing the battery door completely with the battery in place. When the battery door is closed the instrument will start up by playing a jingle. This indicates that the battery is working and the instrument is operating.

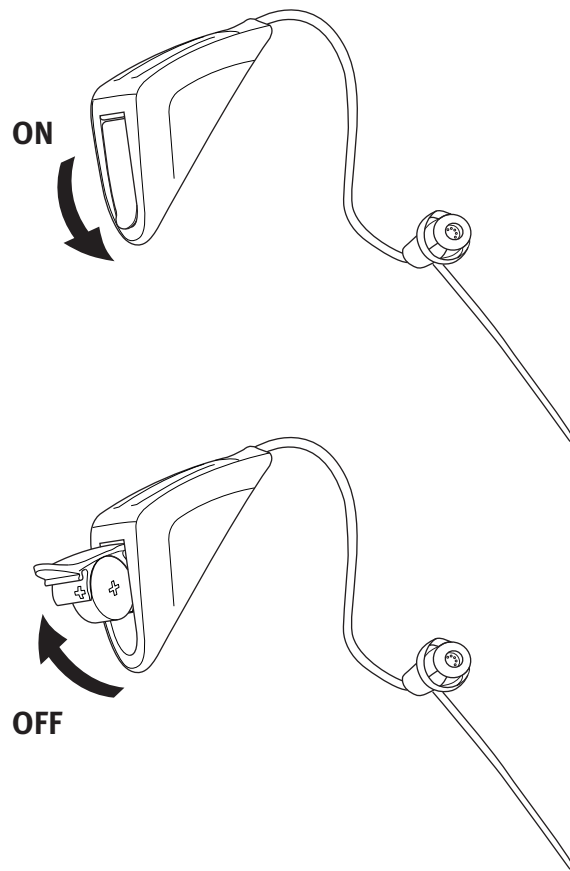
Turn **OFF** your hearing instrument by opening the battery door.

With Dual Connect (312 size battery) the hearing instrument will turn off when the battery door is half way open - you are able to feel a soft click. With Dual Mini (10 size battery) the battery door must be fully opened to turn off the instrument.

To preserve the battery, make sure your hearing instrument is switched off when you are not wearing it.

IMPORTANT NOTICE

Open the battery compartment fully to allow air to circulate whenever you are not using your hearing instrument, especially at night!



Putting on the hearing instrument

Turn the instrument on. Place the speaker, with the ear piece attached, into your ear first and then place the amplifier behind your ear. If the instrument comes with a Micro Mould, make sure that the coloured dot (blue or red) on the mould is facing towards the amplifier unit (upwards) to ensure a correct position in the ear canal.

Make sure that the ear piece is placed so that the tube follows the contour of the skin.

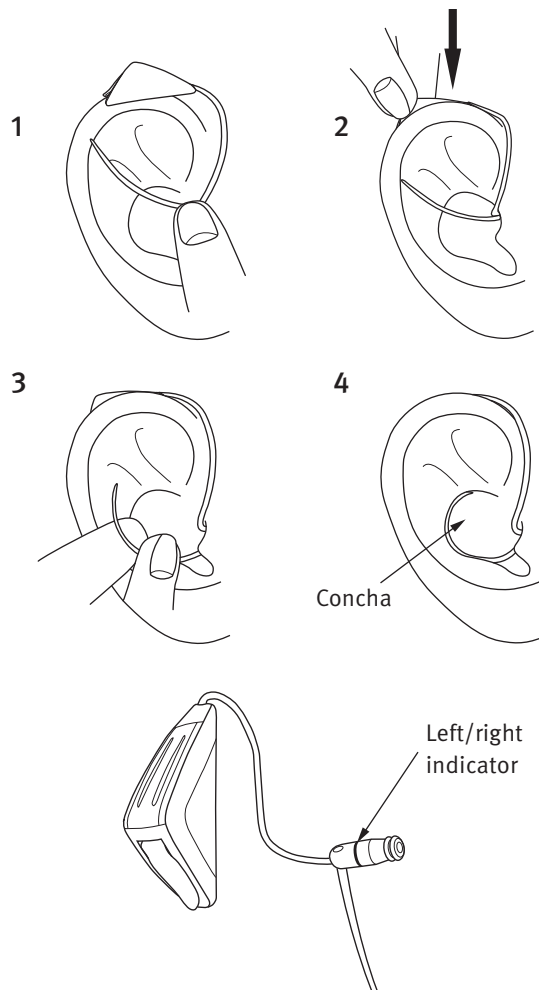
If the instrument has an ear grip, place it in the concha as indicated in drawing 4.

Alternatively place the amplifier behind your ear. Put the speaker into your ear canal.

Left/right indication for hearing instrument

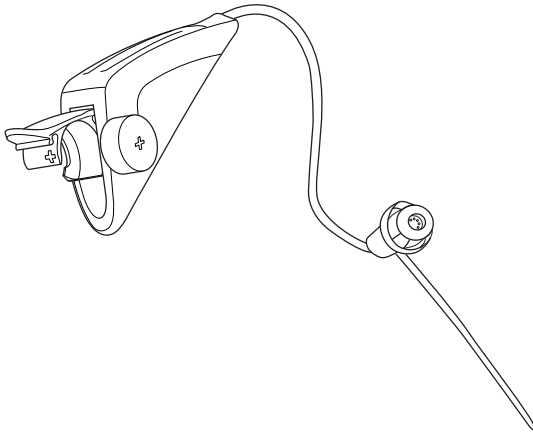
Blue colour indicates left instrument.

Red colour indicates right instrument.



Changing batteries

Your Dual hearing device uses either a size **10** or **312** battery.



To replace the battery, follow these instructions:

- Open the battery door completely by pushing the raised edge in the bottom of the instrument. Remove the old battery.
- Remove the sticky label from the + side of the new battery.
- Insert the new battery so that its + marking faces the + sign printed on the battery door. Close the battery door.

Any moisture on the battery surface should be wiped off before use.

When you change battery, it will take a few seconds before the battery works to full capacity.

To assist the handling of the batteries, the magnet placed at the end of the tool can be used.

Multitool

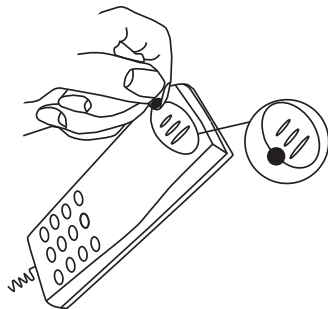


AutoPhone

Your hearing instrument may have a built-in AutoPhone functionality. When the hearing instrument is close to a telephone receiver, the AutoPhone will activate a Phone Program. When the Phone Program is activated you will hear a number of beeps.

When you end your telephone conversation, the hearing instrument will automatically return to the previous program.

Not all telephones can activate the AutoPhone. The telephone receiver must have a special magnet fitted. Please follow the separate instructions for mounting the magnet, which is available from your Hearing Care Professional.



Warning

If you use an AutoPhone magnet:

- Keep magnets out of reach of children and pets. If a magnet is swallowed, see a doctor immediately.
- Do not wear the magnet in a breast pocket and always keep it 30 cm away from active implantable devices. Preferably, use the telephone with magnet on the opposite side than a pacemaker or other active implantable devices.
- Keep the magnet 30 cm away from credit cards and other magnetically sensitive devices.

Caring for your hearing instrument

Your ear canal produces ear wax (cerumen) which may clog up the earpiece. Therefore your hearing instrument contains a filter to prevent wax accumulation. Consult your Hearing Care Professional for instructions about the specific wax protection system in your hearing instrument and how it can be replaced.

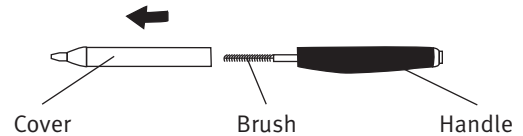
When handling a hearing instrument, keep it over a soft surface to avoid damage if you drop it.

Before retiring at night:

- Make sure that there is no ear wax in any of the earpiece openings since it may reduce the hearing instrument's efficiency.
- Open the battery door completely to allow air to circulate.

Cleaning the instrument

A range of dedicated cleaning tools is prepared for the special purpose of cleaning the instrument. These should be used to ensure the best care and performance of your hearing instruments.



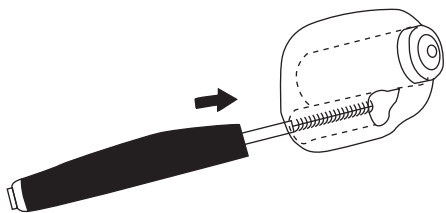
Use the cloth to wipe clean the surface of the instruments.

Replace the brush when necessary. Just pull it out of the tool and insert a new fresh brush. Press the new one firmly into the handle.

Daily maintenance Micro Mould

The Micro Mould should be cleaned regularly:

- Clean the ventilation opening by pressing the brush through the hole while twisting it slightly.



The hearing instrument itself and Micro Mould must **never** be washed or immersed in water or other liquids!

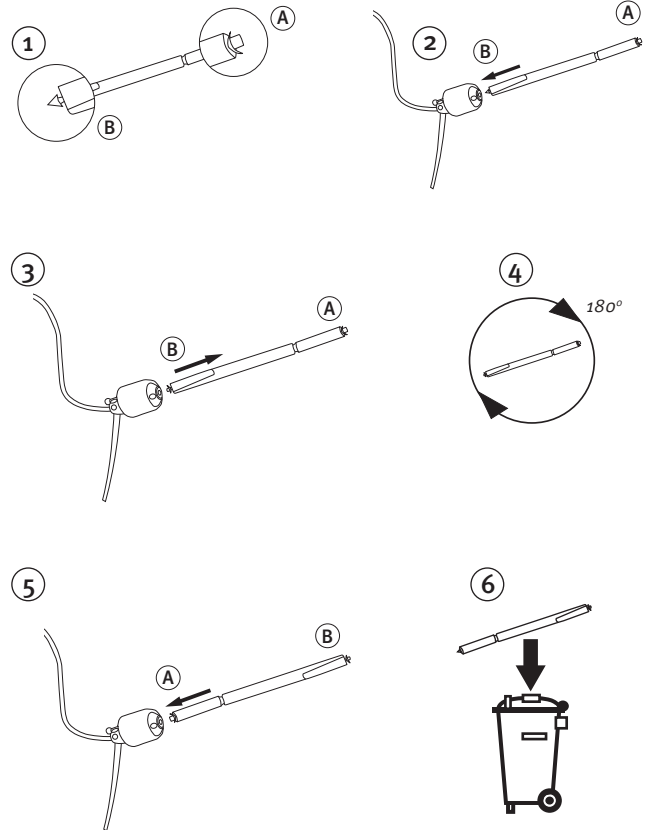
Replace the wax protection system

1. Remove the tool from the shell. The tool has two ends, one with a new filter (A) and one with the removal tool (B).
2. Insert the removal tool into the sound outlet of the Micro Mould.
3. Pull the used wax filter out slowly keeping the tool straight.
4. Turn the tool 180°.
5. Push the new filter into the sound outlet and gently remove the tool.
6. Discard the used tool. Do not reuse.

The wax filter should be changed:

- When you can see that the filter placed in the Micro Mould is clogged.
- When the hearing device does not sound normal.

Use WaxStop protection systems only!

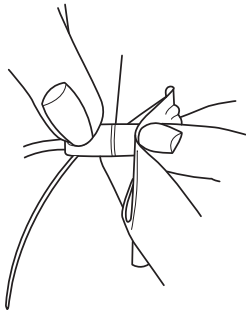


Daily maintenance with domes

Clean the speaker unit daily. Use the cloth and rub off any earwax.

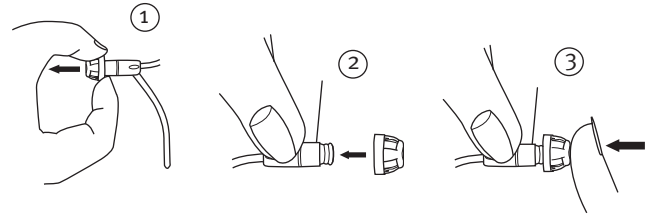
The dome should not be cleaned. When you require a fresh, clean dome, remove the existing one and put on a fresh one.

We recommend the dome to be replaced at least once a month or as directed by your Hearing Care Professional.

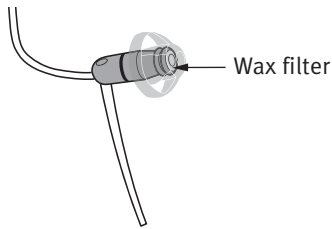


Changing the dome

The dome is easy to replace. Use a finger nail and hold the bottom of the dome. Then pull it off. Place the new dome on the speaker and ensure that it is fastened securely.



Under the dome you will notice a white wax filter attached to the end of the speaker. This is a wax filter that will keep debris from damaging the speaker. If this filter becomes clogged, contact your Hearing Care Professional for service and replacement of the filter.



Important Notice

The dome is made of a soft, medically approved material. If the dome comes off in the ear canal, it will not cause any harm. If you can – carefully take it out. If necessary, let another person help you. Do not push the dome into the ear canal. Do not push the speaker unit into the ear again before the dome is removed from the ear. If you have any doubts, contact your Hearing Care Professional.

Avoiding heat, humidity and chemicals

Your hearing instruments must never be exposed to extreme heat e.g. left inside a parked car in the sun. They must never be exposed to a lot of moisture e.g. steam baths, showers or heavy rain. Nor must they be dried in microwave ovens or other ovens.

Wipe the batteries carefully if moisture is present as it may affect their performance. Using an anti-humidity kit can help to avoid these problems and may even extend the life of your hearing instrument. Consult your Hearing Care Professional for further advice.

The chemicals in cosmetics, hairspray, perfume, aftershave lotion, suntan lotion and insect repellent can damage your hearing instrument. You should always remove your hearing instrument before applying such products and allow time for the product to dry before reinserting your hearing instrument. If you use lotion, be sure to wipe your hands dry before putting on your hearing instrument.

Using your hearing instrument

It takes time to adjust to a new hearing instrument. How long this adjustment takes differs from person to person. It will depend on a number of factors, such as whether you have had a hearing instrument before and the degree of your hearing loss.

Six easy steps to better hearing

1. In the quiet of your home

Try to accustom yourself to all the new sounds. Listen to the many background sounds and try to identify each sound. Bear in mind that some sounds will seem different from what you are used to. You may have to learn to identify them again. Note that in time you will get accustomed to the sounds in your environment – if not please contact your Hearing Care Professional.

If using the hearing instrument makes you tired, take them off for a little while and have a rest. Gradually, you will begin to be able to listen for longer periods of time. Soon, you will be able to wear your hearing instruments comfortably all day long.

2. Conversation with another person

Sit with someone else in a quiet room. Face each other so you can read facial expressions easily. You may experience new speech sounds, which can seem a little disturbing in the beginning. However, after the brain has adapted to the new speech sounds, you should hear speech clearer.

3. Listen to radio or TV

When listening to the TV or the radio, start out by listening to news commentators since they usually speak clearly, then try other TV programs.

If you find it difficult to listen to TV or radio, your Hearing Care Professional should be able to give you advice on available accessories to enhance your listening capabilities for TV and radio.

4. In group conversations

Group situations are usually accompanied by a greater degree of background noise and are naturally more difficult to cope with. In such situations, focus your attention on the person you want to hear. If you miss a word, ask the speaker to repeat.

5. Using the telephone

When using the telephone tilt the receiver edge lightly on your cheek-bone in order to let the sound flow directly into the hearing instrument microphone opening. This way, the hearing instrument will not whistle and you ensure the best conditions to understand the conversation. When you have the receiver in this position, remember to speak directly into the microphone on the telephone in order to ensure good understanding in the opposite “end of the line”.

Your hearing instrument has an AutoPhone. Your instrument can be set to automatically switch into a phone program in order to improve the sound reception further.

Remember that the Phoncoil in your hearing instruments may pick up disturbing signals from electronic devices, such as fax machines, computers, televisions or similar. Make sure that the hearing instrument has a distance of 2-3 meters to such devices when using the Phoncoil program.

6. Wireless and mobile phones

Your hearing instrument is designed to comply with the most stringent Standards of International Electromagnetic Compatibility. However not all mobile phones are hearing instrument compatible. The varying degree of disturbance can be due to the nature of your particular mobile phone.

If you find it difficult to obtain a good result while using your mobile telephone, your Hearing Care Professional should be able to give you advice on available accessories to enhance listening capabilities.

Use your hearing instruments all day long

The best way to ensure better hearing is to practice listening until you can wear your hearing instruments comfortably all day. In most cases, infrequent use of hearing instruments does not give you the full benefit.

Your hearing instruments will not restore normal hearing. Nor will they prevent or improve a hearing impairment resulting from a physiological condition. What they will give you, however, is help towards making better use of the hearing ability that you have. If you have two hearing instruments always wear both.

The most important benefits of wearing two hearing instruments are:

- Your ability to localize sounds will improve.
- It will be easier to understand speech in noisy surroundings.
- You will experience a fuller, more comfortable sound picture.

Common problems and their solutions

Symptom	Possible causes	Solutions
No sound	Worn-out battery	Change battery pg. 10
	Clogged sound outlet	Clean MicroMould or dome pg. 16 & 20
		Consider replacing wax protection or dome pg. 18 & 20
Intermittent or reduced sound	Clogged sound outlet	Clean MicroMould or dome pg. 16 & 20
	Moisture	Wipe battery and instrument with dry cloth pg. 23
	Worn-out battery	Change battery pg. 10

Common problems and their solutions

Symptom	Possible causes	Solutions
Squealing noise	Hearing instrument inserted improperly	Reinsert hearing instrument pg. 8
	Ear wax accumulated in ear canal	Have ear canal examined by your doctor

If none of the above solutions solves the problem, ask your Hearing Care Professional for assistance.

International Warranty

Oticon hearing instruments are covered by a limited warranty issued by the manufacturer for a period of 12 months from the date of delivery. This limited warranty covers manufacturing and material defects in the hearing instrument itself, but not accessories such as batteries, tubing, earwax filters etc.

Problems arising from improper handling or care, excessive use, accidents, repairs made by an unauthorized party, exposure to corrosive conditions, physical changes in your ear, damage due to foreign objects entering the device, or incorrect adjustments are NOT covered by the limited warranty and may void it.

The above warranty does not affect any legal rights that you might have under applicable national legislation governing sale of consumer goods. Your Hearing Care Professional may have issued a warranty that goes beyond the clauses of this limited warranty. Please consult him/her for further information.

If you need service

Take your hearing instrument to your Hearing Care Professional, who may well be able to sort out minor problems and adjustments on the spot.

Warranty Certificate

Name of Owner: _____

Dispenser: _____

Dispenser Address: _____

Dispenser Phone: _____

Purchase Date: _____

Warranty Period: _____ Month: _____

Model Left: _____ Serial no.: _____

Model Right: _____ Serial no.: _____

Battery Size: _____

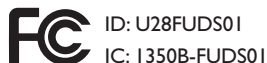
Product approval, precautions and markings

The hearing instrument may contain a radio transmitter using short range magnetic induction technology working at 3.84 MHz. The magnetic field strength of the transmitter is < -42 dB μ A/m @ 10m.

The emission power from the radio system is well below international emission limits for human exposure. For comparison, the radiation of the hearing instrument is lower than unintended electromagnetic radiation from for example halogen lamps, computer monitors, dishwashers etc. The hearing instrument complies with international standards concerning Electromagnetic Compatibility.

Due to the limited size available on the instruments all relevant approval markings are found in this document.

Dual XW, Dual W, Dual V and Dual Pro contains a module* with:



The device complies with Part 15 of the FCC rules and RSS-210 of Industry Canada.

Operation is subject to the following two conditions:

1. this device may not cause harmful interference.
2. this device must accept any interference received, including interference that may cause undesired operation.

Changes or modifications not expressly approved by the party responsible for compliance could void the user's authority to operate the equipment.

908 67 110 00 / 08.08

Hereby, Oticon A/S declare that this hearing instrument is in compliance with the essential requirements and other relevant provisions of Directive 1999/5/EC. Declaration of conformity is available at:

Oticon A/S
Kongebakken 9
DK-2765 Smørum
Denmark
www.oticon.com

CE 0543 0682

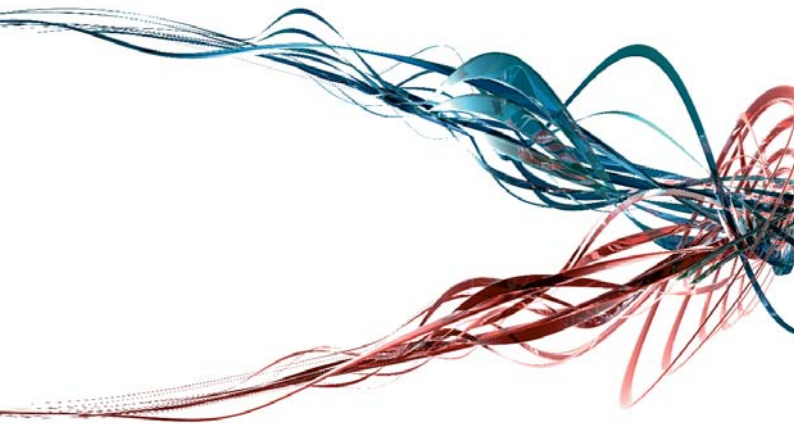
* This module is not applicable to Dual m9, Dual m7 and Dual m5



Waste from electronic equipment must be handled according to local regulations.



NI175



908 67 110 00 / 08.08



90867110000001

oticon
PEOPLE FIRST

Warnings

You should familiarize yourself fully with the following general warnings and the entire contents of this booklet before using your hearing instruments.

Hearing instruments and batteries can be dangerous if swallowed or used improperly. Such actions can result in severe injury, permanent hearing loss, or can even be fatal.

- Hearing instruments, their parts, and batteries are not toys and should be kept out of reach of children and anyone who might swallow these items or otherwise cause injury to themselves.
- Never change the battery or adjust the controls of the hearing instruments in front of infants, small children or people with learning difficulties.
- Discard batteries carefully in a place where infants, small children or people with learning difficulties cannot reach them.
- Batteries have occasionally been mistaken for pills. Therefore carefully check your medicine before swallowing any pills.
- Never put your hearing instruments or batteries in your mouth for any reason, as they are slippery and could be swallowed by accident.

- Some Oticon hearing instruments can be supplied with a tamper-resistant battery compartment upon request. This is strongly recommended for infants, small children, and people with learning difficulties.

If a battery or hearing device is swallowed, see a doctor immediately.

Misusage

- Hearing instruments should be used only as directed and adjusted by your Hearing Care Professional. Misuse could result in sudden and permanent hearing loss.
- Never allow others to wear your hearing instruments as incorrect/wrongful usage could cause permanent damage to their hearing.

Battery use

- Always use batteries recommended by your Hearing Care Professional. Batteries of low quality may leak and cause bodily harm.
- Never attempt to recharge your batteries. They may explode and cause serious injury.
- Never dispose of batteries by burning them. There is a risk that they will explode and cause serious injury.

Dysfunction in hearing instruments

- Hearing instruments may stop functioning, for instance if the batteries have expired or if the receiver/loudspeaker is blocked by moisture or earwax. You should be aware of this possibility, in particular when you are in traffic or otherwise dependent on warning sounds.

Interference

- Your hearing instruments have been thoroughly tested for interference, according to the most stringent international standards. But new technical developments constantly bring new products into society, and some may emit electromagnetic radiation, leading to unforeseen interference in hearing devices. Examples include induction cooking appliances, shop alarm systems, mobile telephones, fax machines, personal computer devices, X-rays, Computer tomography, etc.
- Your hearing instruments are designed to comply with the most stringent Standards of International Electromagnetic Compatibility. However, your hearing instrument may cause interference with other medical devices. Such interference can also be caused by radio signals, power line disturbances, airport metal detectors, electromagnetic fields from other medical devices and electrostatic discharges.

Possible side effects

- Hearing instruments may cause an accelerated accumulation of cerumen (ear wax).
- The otherwise non-allergenic materials used in hearing instruments may in rare cases cause a skin irritation.

Consult a doctor if you experience any of these side effects.

Wax protection system

- Always visually inspect your hearing instruments to ensure that there is no gap between the wax protection flange and the tip of the Micro Mould.

If you are in any doubt about the use or replacement of your wax protection system, contact your Hearing Care Professional.