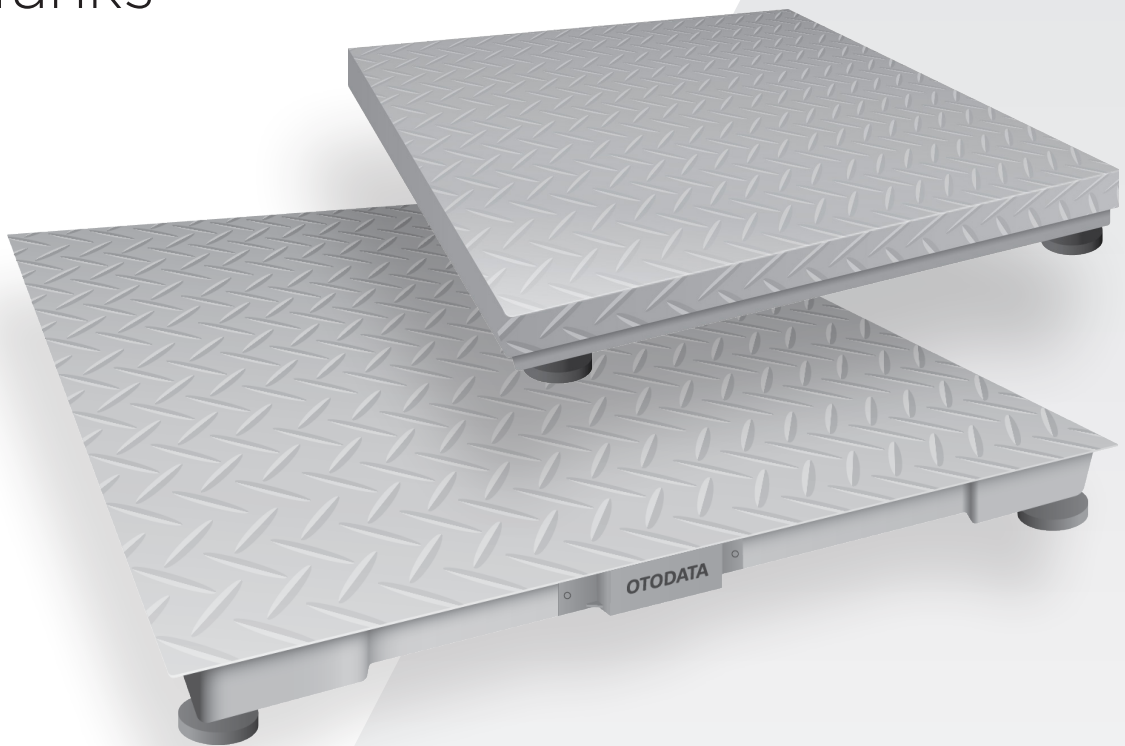


Installation Procedure

Bluetooth Elite Scales for Industrial Gas Tanks



IMPORTANT ⓘ It is critical in all installations to ensure monitors' antenna is positioned vertically. This will achieve optimal signal strength, ensuring that you receive data in a timely manner and prolong the battery life of the monitor.

PLEASE TAKE A MOMENT TO CAREFULLY READ THE INSTALLATION INSTRUCTIONS INCLUDED WITH YOUR MONITORS, AND ENSURE YOU UNDERSTAND AND RESPECT LOCAL REGULATIONS.

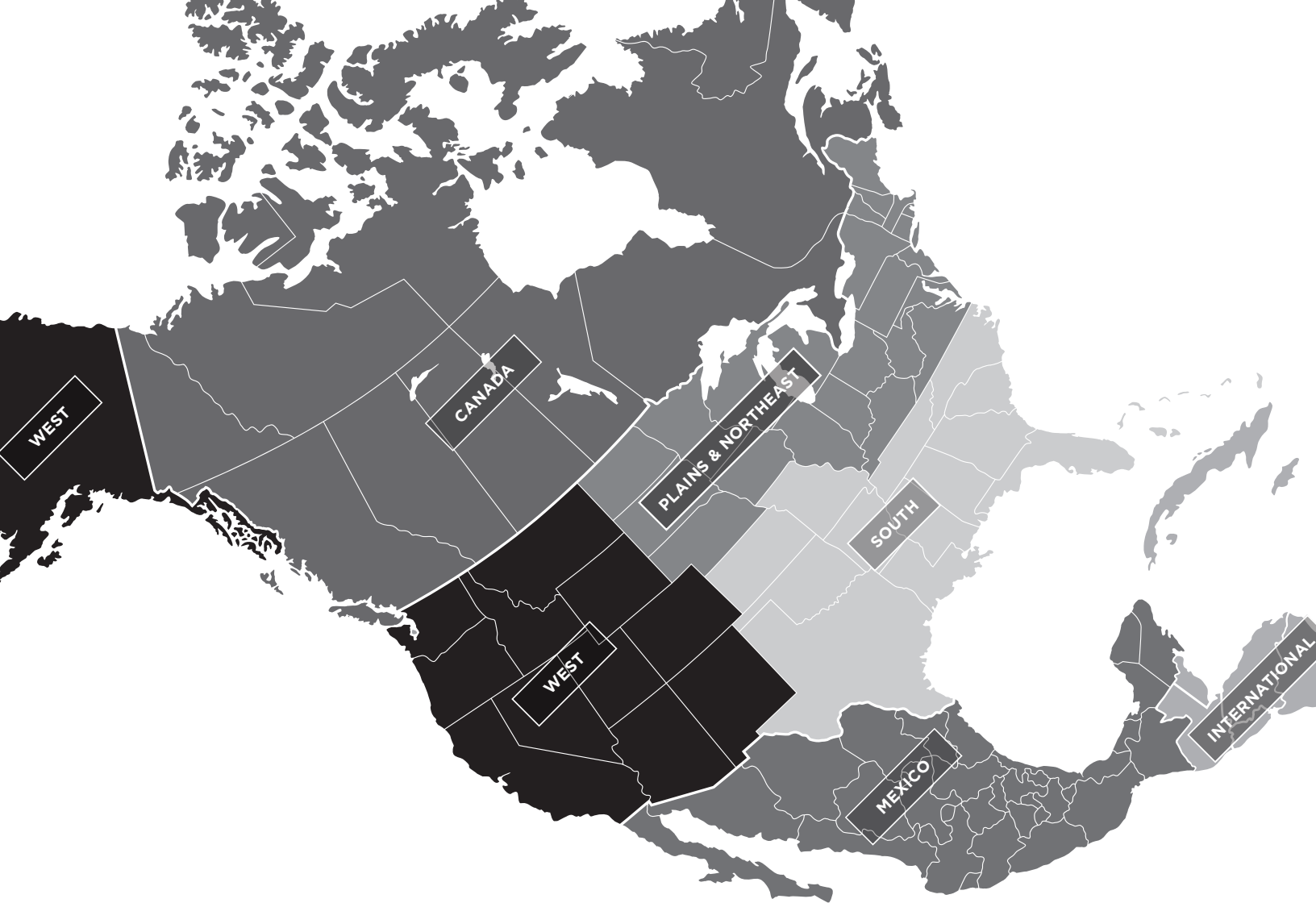


Do not
pressure wash

WARNING Changes or modifications to the unit must only be performed by an authorized technician. For outdoor use only. Explosion Hazard
- Do not open when an explosive atmosphere is present. Potential electrostatic charging hazard - wipe only with a damp cloth.

INSTALLATION Always follow your local regulations and standards. If locally required, consult with certified personnel to ensure your installation is compliant.

BATTERY REPLACEMENT Please contact Otodata Support or your representative for battery replacement programs.



SUPPORT

1-514-673-0244 | 1-844-763-3344 (Toll-free)
support@otodatatankmonitors.com

EMERGENCY SUPPORT

1-833-529-9499
Available 24 hours, 7 days a week.

Specifications

Bluetooth Elite scale to weigh small-size industrial tanks up to 300kg

Input

Weight sensors data via Bluetooth

Reporting & Outputs

Reporting	Measured parameter (5% variation)
	Low battery
	High/Excessive draw
	Temperature
Data Interface	Raw data
	Client mobile app
Automated Testing	Connection status
	Battery status

Electrical Specifications

Battery Pack	Hybrid LTC 8.5Ah ~ 3.6 Vdc
--------------	----------------------------

Radio Specifications

Receiver	Freq.: 2402.000MHz ~ 2480.000MHz
	Modulation: GFSK
Transmitter	Freq.: 2402.000MHz ~ 2480.000MHz
	Modulation: GFSK
	Output: 4.73dBm

Features

Auto-pairing to any Ototdata ready sensor
Android and IOS apps
Ready to install

Environmental Specifications

Operating & storage temp. range	-40 °C to 85 °C	-40 °F to 185 °F
Relative humidity range	0% to 100%	
Enclosure rating	IP67	
Warranty	1 year	

Certifications

ISED RSS-247, Issue 2	IC Registration: 12649A-BEHT3AD
FCC Part 15 Subpart C	FCC ID: 2ADQFBEHT3AD

Dimensions

Height	114 mm	4.5 in
Width	406 mm	16 in
Depth	508 mm	20 in

Ordering

ES3022
Small Elite Scale with BT 650lb (300kg), no monitor

TM5030BG-VA00-CNEE-ES3022
Small Elite Scale with BT and Gen2 monitor 650lb (300kg)

This device complies with part 15 of the FCC Rules. Changes or modifications not expressly approved by the party responsible for compliance could void the user's authority to operate the equipment. Operation is subject to the following two conditions: (1) This device may not cause harmful interference, and (2) this device must accept any interference received, including interference that may cause undesired operation. This device is compliant with Industry Canada's RSS standards for licence-exempt radio apparatuses. Authorized use depends on the following two conditions: (1) the device must not create radio interference, and (2) the device user must accept all radio interference, even if this interference could potentially impair its functioning. This equipment has been tested and found to comply with the limits for a Class B digital device, pursuant to part 15 of the FCC Rules. These limits are designed to provide reasonable protection against harmful interference in a residential installation. This equipment generates, uses and can radiate radio frequency energy and, if not installed and used in accordance with the instructions, may cause harmful interference to radio communications. However, there is no guarantee that interference will not occur in a particular installation. If this equipment does cause harmful interference to radio or television reception, which can be determined by turning the equipment off and on, the user is encouraged to try to correct the interference by one or more of the following measures: --Reorient or relocate the receiving antenna. --Increase the separation between the equipment and receiver. --Connect the equipment into an outlet on a circuit different from that to which the receiver is connected. --Consult the dealer or an experienced radio/TV technician for help.

Specifications

Bluetooth Elite scale to weigh industrial tanks up to 1,000kg

Input

Weight sensors data via Bluetooth

Reporting & Outputs

Reporting	Measured parameter (5% variation)
	Low battery
	High/Excessive draw
	Temperature
Data Interface	Raw data
	Client mobile app
Automated Testing	Connection status
	Battery status

Electrical Specifications

Battery Pack	Hybrid LTC 8.5Ah ~ 3.6 Vdc
--------------	----------------------------

Radio Specifications

Receiver	Freq.: 2402.000MHz ~ 2480.000MHz
	Modulation: GFSK
Transmitter	Freq.: 2402.000MHz ~ 2480.000MHz
	Modulation: GFSK
	Output: 4.73dBm

Features

Auto-pairing to any Otodata ready sensor
Android and IOS apps
Ready to install

Environmental Specifications

Operating & storage temp. range	-40 ° C to 85 ° C	-40 ° F to 185 ° F
Relative humidity range	0% to 100%	
Enclosure rating	IP67	
Warranty	1 year	

Certifications

ISED RSS-247, Issue 2	IC Registration: 12649A-BEHT3AD
FCC Part 15 Subpart C	FCC ID: 2ADQFBEHT3AD

Dimensions

Height	114 mm	4.5 in
Width	749 mm	29.5 in
Depth	749 mm	29.5 in

Ordering

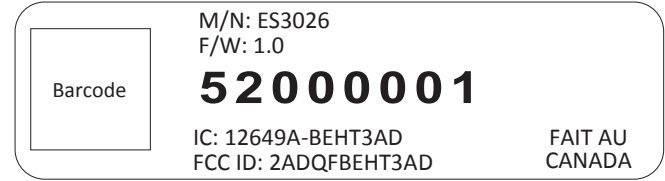
ES3026
Large Elite Scale with BT 2200lb (1000kg), no monitor

TM5030BG-VA00-CNEE -ES3026
Large Elite Scale with BT and Gen2 monitor 2200lb (1000kg)

This device complies with part 15 of the FCC Rules. Changes or modifications not expressly approved by the party responsible for compliance could void the user's authority to operate the equipment. Operation is subject to the following two conditions: (1) This device may not cause harmful interference, and (2) this device must accept any interference received, including interference that may cause undesired operation. This device is compliant with Industry Canada's RSS standards for licence-exempt radio apparatuses. Authorized use depends on the following two conditions: (1) the device must not create radio interference, and (2) the device user must accept all radio interference, even if this interference could potentially impair its functioning. This equipment has been tested and found to comply with the limits for a Class B digital device, pursuant to part 15 of the FCC Rules. These limits are designed to provide reasonable protection against harmful interference in a residential installation. This equipment generates, uses and can radiate radio frequency energy and, if not installed and used in accordance with the instructions, may cause harmful interference to radio communications. However, there is no guarantee that interference will not occur in a particular installation. If this equipment does cause harmful interference to radio or television reception, which can be determined by turning the equipment off and on, the user is encouraged to try to correct the interference by one or more of the following measures: --Reorient or relocate the receiving antenna. --Increase the separation between the equipment and receiver. --Connect the equipment into an outlet on a circuit different from that to which the receiver is connected.

4 --Consult the dealer or an experienced radio/TV technician for help.

Label on Device



ISED Non-interference Disclaimer

This device contains licence-exempt transmitter(s)/ receiver(s) that comply with Innovation, Science and Economic Development Canada's licence-exempt RSS(s).

Operation is subject to the following two conditions:

1. This device may not cause interference
2. This device must accept any interference, including interference that may cause undesired operation of the device.

L'émetteur/récepteur exempt de licence contenu dans le présent appareil est conforme aux CNR d'Innovation, Sciences et Développement économique Canada applicables aux appareils radio exempts de licence. L'exploitation est autorisée aux deux conditions suivantes :

1. L'appareil ne doit pas produire de brouillage;
2. L'appareil doit accepter tout brouillage radioélectrique subi, même si le brouillage est susceptible d'en compromettre le fonctionnement.

RF Exposure Statement for ISED

This equipment complies with ISED RSS-102 radiation exposure limits set forth for an uncontrolled environment. This equipment should be installed and operated with minimum distance 20 cm (7.6 inches) between the radiator and any part of your body. This transmitter must not be co-located or operating in conjunction with any other antenna or transmitter.

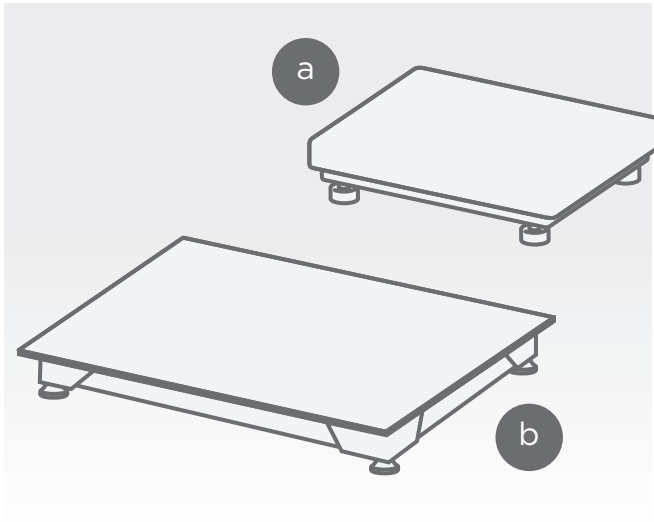
Our se conformer aux exigences de conformité ISED RSS-102 RF exposition, une distance de séparation d'au moins 20 cm doit être maintenue entre l'antenne de cet appareil et toutes les personnes. Lanceurs ou ne peuvent pas coexister cette antenne ou capteurs avec d'autres.

RF Exposure Statement for FCC

This equipment complies with FCC radiation exposure limits set forth for an uncontrolled environment. This transmitter must not be co-located or operating in conjunction with any other antenna or transmitter. In order to avoid the possibility of exceeding the FCC radio frequency exposure limits, this equipment should be installed and operated with minimum distance 20 cm (7.8 inches) between the antenna and your body during normal operation. Users must follow the specific operating instructions for satisfying RF exposure compliance.

Installation Instructions

Instructions are applicable to models ES3022 and ES3026

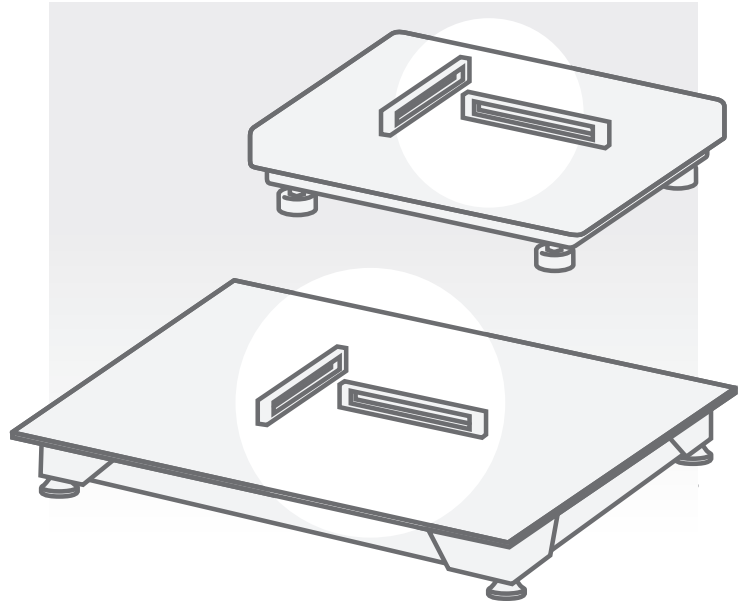


Step 1 Verify All Parts are in Good Condition

Before you begin, take a moment to verify if all parts are in good condition, and all 4 legs are in place.

- a. Model ES3022, Small Elite Scale 650lb (300kg)
- b. Model ES3026, Large Elite Scale 2,200lb (1,000kg)

If any parts are missing, contact your sales representative.

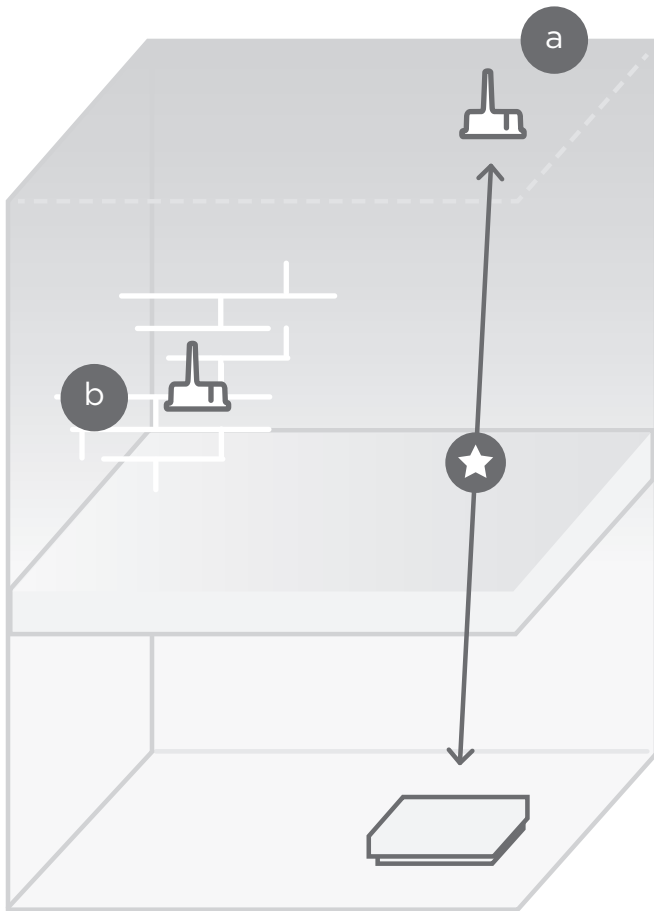


Step 2 Ensure the Scale is Perfectly Level

Place the scale on the floor where you intend it to be installed, and rotate the legs up or down until it is perfectly level.

We strongly suggest using a Bubble Level to verify if the scale is perfectly straight.

Once done, tighten the counter nuts to lock them in place.

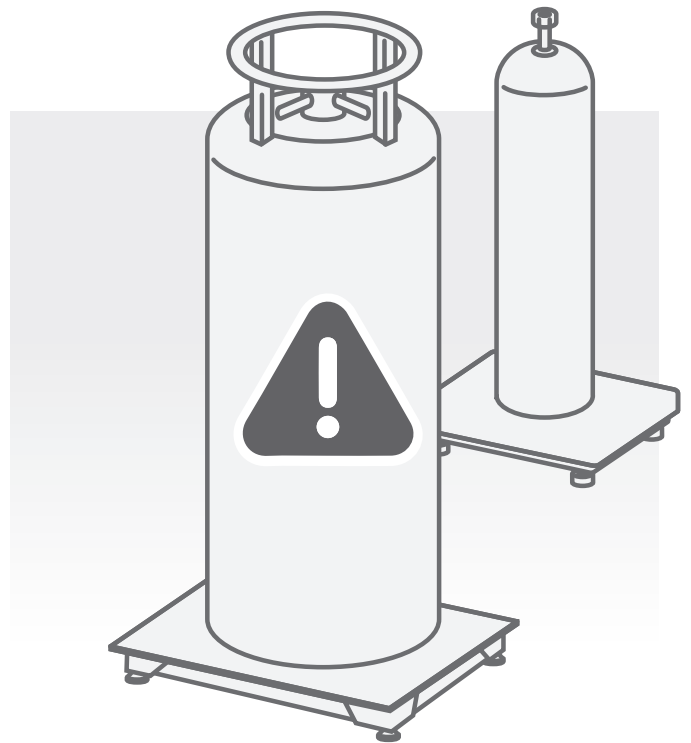


Step 3 Install Wireless Bluetooth Monitor Within 25ft of the Elite Scale

Once your scale is leveled, it is time to install the Otodata Monitor. This monitor has a powerful antenna which will intercept the signal from the Scale and transmit the tank weight to the cloud.

- a. Install on roof, or
- b. exterior wall (affix with mounting bracket ACWMB1)

★ **IMPORTANT** For correct operation, the Otodata Wireless Bluetooth Monitor should be installed as high up as possible in an area clear of major obstructions, and should be no more than 25 feet (7.5m) from the Elite Scale.



Step 4 Mount Tank onto Scale

Exercising extreme caution, gently mount your tank onto the scale. Position as perfectly centered as possible.

IMPORTANT DO NOT let the tank hit/fall onto the scale as it can cause irreparable damage.

**Members can watch
step-by-step installation
videos and shop online**



Sign up free today

otodatatankmonitors.com/membership

Members can purchase monitors and accessories like gauges, leads, mounting equipment and more via our online store.