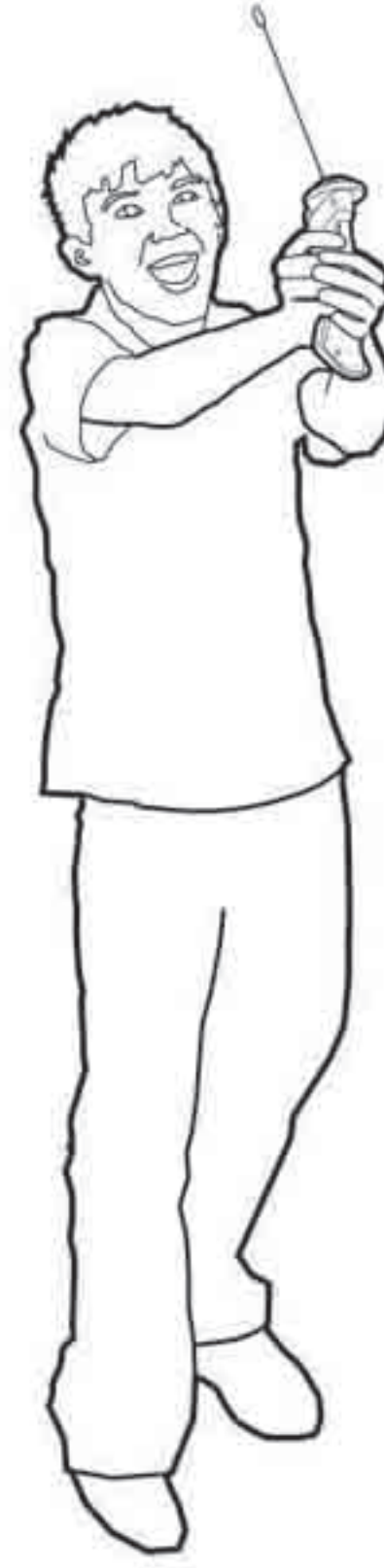




# micro HoverCopter™

RC Flying Saucer



## Instruction Manual

[www.hover-copter.com](http://www.hover-copter.com)  
 Actual contents may vary slightly.  
 Some assembly required.  
 Made in China  
 © 2005 Overbreak, LLC  
 Micro Hover Copter is a trademark of Overbreak LLC  
 Sun Valley CA 91352  
 Conforms to ASTM F963

### CAUTION - ELECTRIC TOY:

Not recommended for children under 8 years of age. As with all electric products, precautions should be observed during handling and use to prevent electric shock.

Keep this instruction manual. It contains important information.

### PRODUCT WARNINGS:

1. Caution: The HoverCopter is an electrically operated product.
2. Recommended for use by children eight years old and older.
3. As with all electric products, use caution during use and handling to prevent electric shock.
4. Keep your face, eyes, fingers, hair, and other body parts away from the propeller and gears.
5. Only fly the HoverCopter in a well-lit, uncrowded area where there is at least 10 feet of open space.
6. Do not expose the HoverCopter to water, rain, or moisture.
7. Do not fly the HoverCopter in total darkness.
8. Make sure people around you know you are flying the HoverCopter.
9. Do not fly the HoverCopter in crowded areas.
10. Do not fly the HoverCopter in dusty environments.
11. Be sure to turn the HoverCopter and Controller off when not in use.
12. Do not fly the HoverCopter near traffic.
13. Do not lift objects with the HoverCopter.
14. **Do not use the HoverCopter if there is any damage to any of the components, including the Saucer, propeller, AC adaptor, its cord or plug, or Power Regulator. Use of a damaged product may be hazardous. Discard damaged product.**

### AC ADAPTOR & POWER REGULATOR:

The HoverCopter is intended for ages 8+. Keep this instruction manual -- it contains important information.

The HoverCopter operates only with the included AC adaptor and Power Regulator. Use with an adaptor or regulator from another HoverCopter or another product could create a dangerous condition. An adult should regularly examine and supervise the use of the AC adaptor and Power Regulator. Do not use the HoverCopter if there is any damage to the power cord, plug, or other parts of the AC adaptor or Power Regulator. Disconnect the AC adaptor and Power Regulator before cleaning.

**The AC adaptor, Power Regulator, and batteries may become warm during charging. The Power Regulator should be disconnected from the HoverCopter when it is fully charged. Never leave the HoverCopter connected to the Power Regulator overnight. Do not overcharge the HoverCopter -- this can damage the batteries and the product.**

1

### BATTERY SAFETY:

Insert the batteries correctly as shown to prevent leakage. Batteries should be inserted and replaced by an adult. Batteries should not be exposed to direct sunlight, high heat, or fire -- batteries may explode. Do not mix old batteries with new. Do not mix alkaline, non-alkaline, or rechargeable batteries. Do not try to recharge non-rechargeable batteries. If the HoverCopter will not be used for a long period, remove batteries to prevent leakage and damage. Remove dead batteries from Controller. The batteries in the Saucer are not replaceable. Be sure the battery compartments are screwed securely in place. Do not get the HoverCopter or any of the components wet. Clean only with a soft cloth -- no fluids. Do not short circuit the battery terminals. Do not leave the HoverCopter connected to the AC adaptor overnight. Disconnect the AC adaptor and the power regulator from the HoverCopter when it is fully charged.

Dispose of batteries properly. Do not throw them in the household garbage. Never dispose of batteries in fire -- they may explode. In case of battery leaks, do not touch the leaking fluid. Place the leaking battery inside a plastic bag and dispose of properly. If leaking battery fluid touches your skin or eyes, wash with cool water for at least 15 minutes.

### BATTERY CARE:

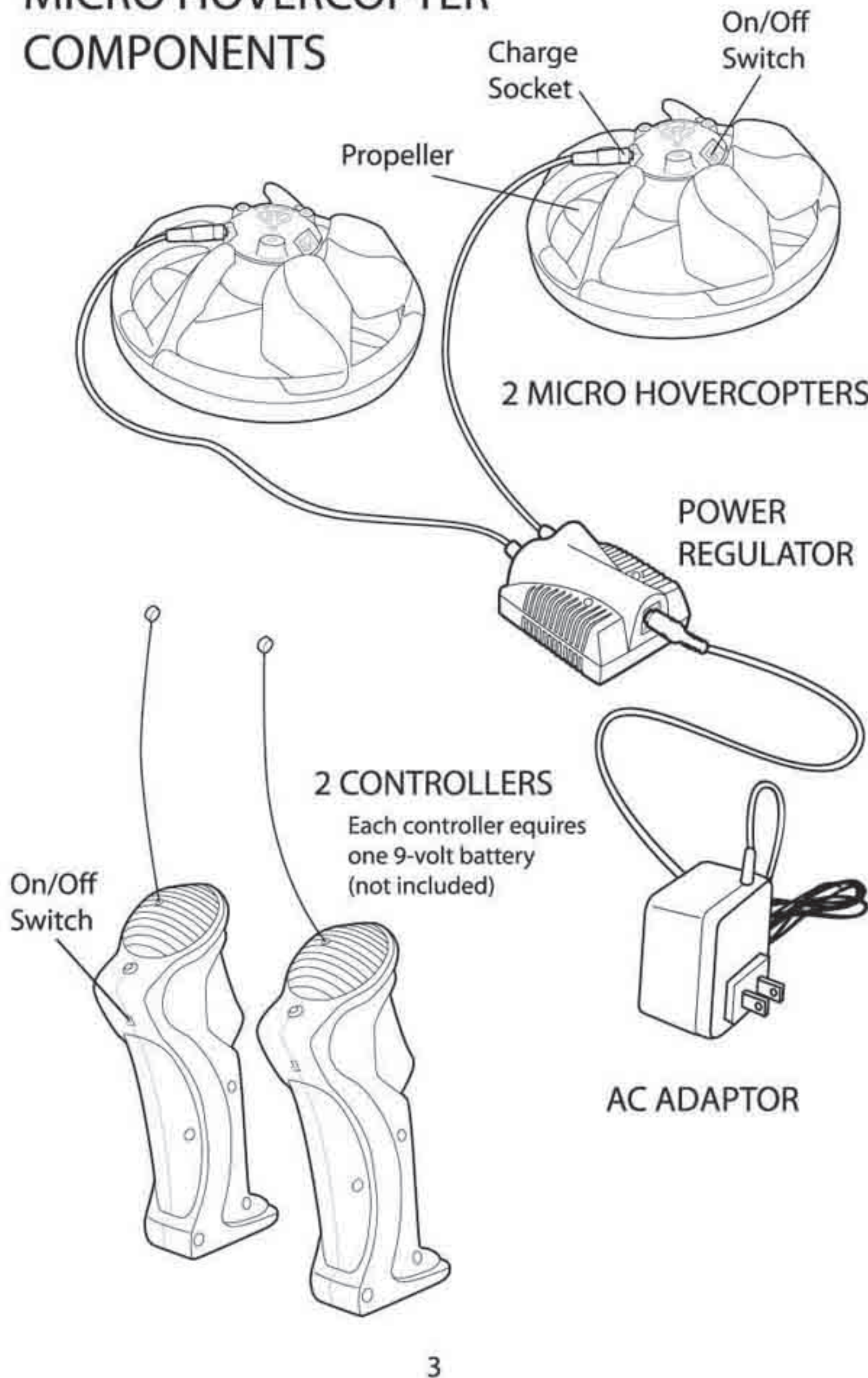
Fly the HoverCopter after each charge. Repeatedly charging without flying in between may damage the batteries or reduce their performance.

### CHARGING INDICATION:

The signal LED on the regulator will flash during charging. The signal LED will stop flashing after charging is completed.

2

### MICRO HOVERCOPTER COMPONENTS



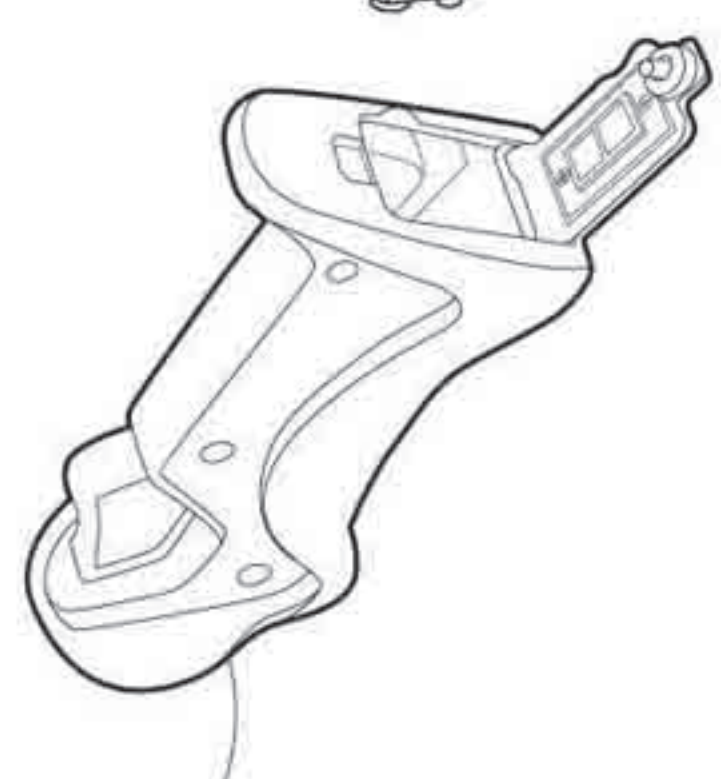
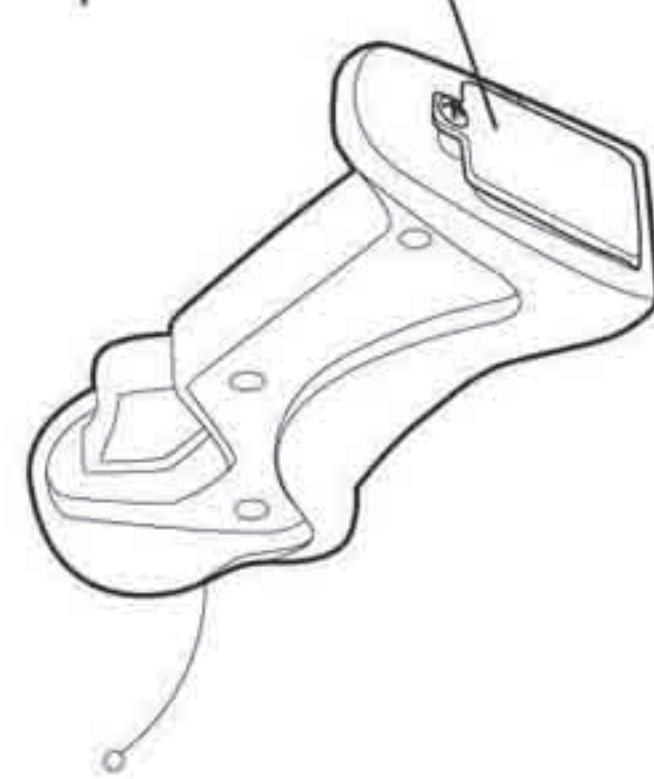
3

### BATTERY INSTALLATION

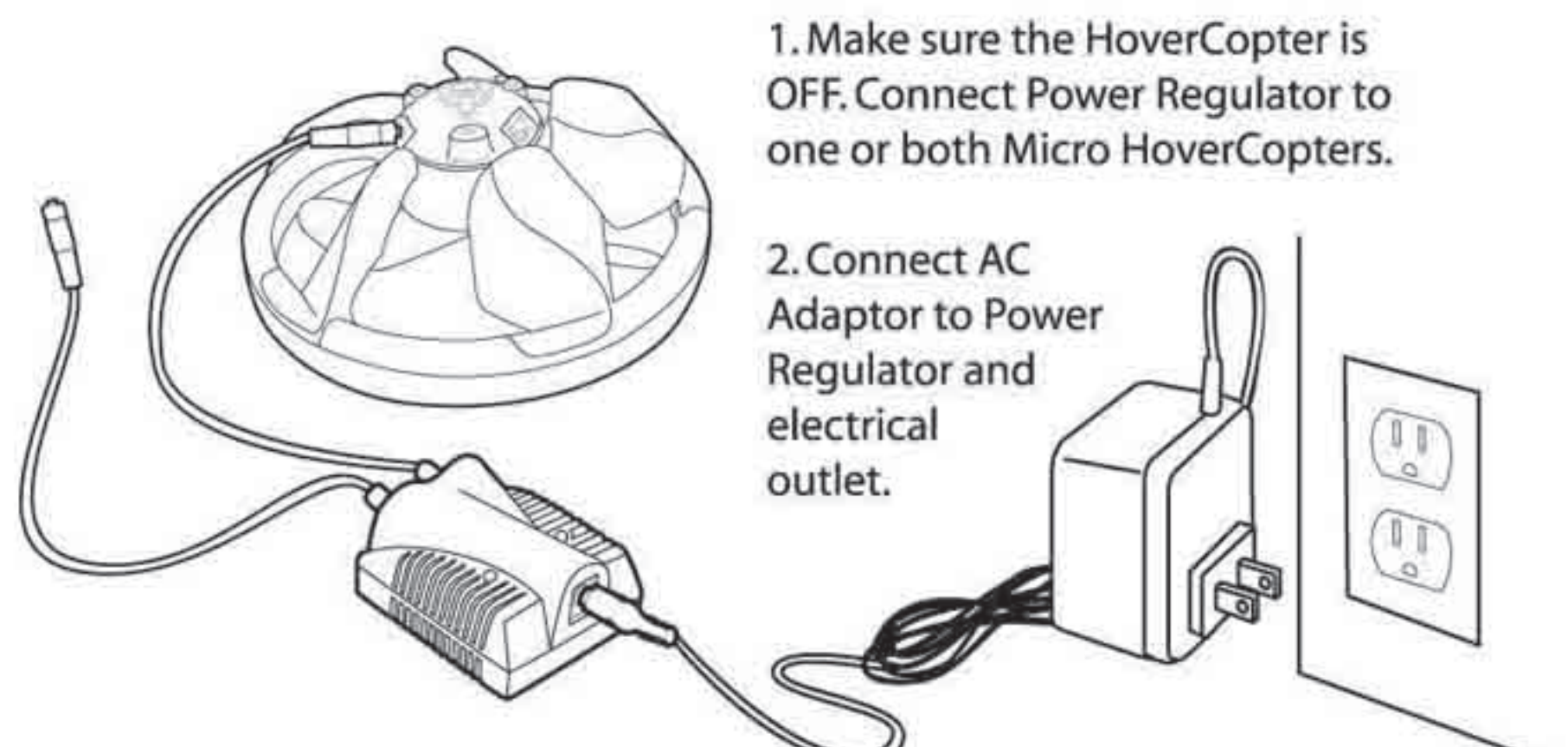
#### CONTROLLER

1. Open battery compartment with Phillips screwdriver.

2. Insert 9-volt battery (not included).



#### CHARGING

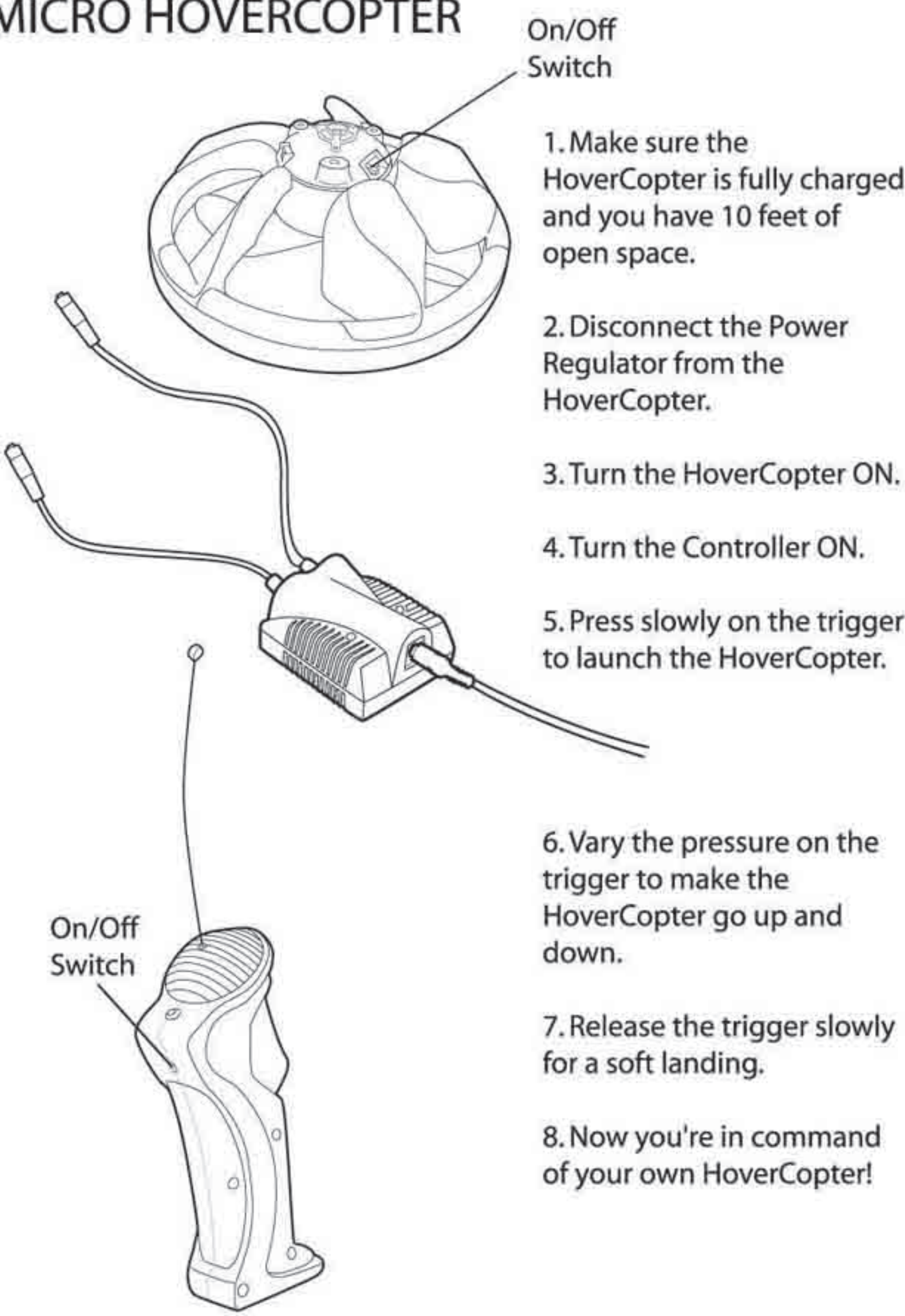


1. Make sure the HoverCopter is OFF. Connect Power Regulator to one or both Micro HoverCopters.
2. Connect AC Adaptor to Power Regulator and electrical outlet.

3. A full charge will take about 15 minutes. Fly the HoverCopter after each charge. Repeatedly charging without flying in between may damage the batteries or reduce their performance. Remove AC adaptor from electrical outlet after use.

4

### FLYING THE MICRO HOVERCOPTER



5

### TROUBLE-SHOOTING

Problem	Possible cause	Solution
Propeller doesn't spin	HoverCopter Saucer battery is low. The on/off switches on the Saucer and Controller are not turned on.	Charge Saucer fully. Turn on Saucer and Controller.
HoverCopter Saucer does not respond to Controller	The Controller's battery is low. The battery is not inserted correctly. The Saucer is too far away.	Replace battery. Check battery for correct insertion as shown on the bottom of the handle. Move closer to the Saucer.

### SPECS

Recommended age: 8+  
 Saucer range: 30 feet  
 Saucer batteries: 6V 80mA Ni-MH  
 Controller battery: 9 volt  
 Controller power consumption: 0.3W (peak)  
 Charge time: 15 minutes

6

Warning: changes or modifications to this unit not expressly approved by the party responsible for compliance could void the user authority to operate the equipment.

NOTE: This equipment has been tested and found to comply with the limits for a Class B digital device, pursuant to part 15 of the FCC Rules. These limits are designed to provide reasonable protection against harmful interference in a residential installation. This equipment generates, uses and can radiate radio frequency energy and, if not installed and used in accordance with the instructions, may cause harmful interference to radio communications.

However, there is no guarantee that interference will not occur in a particular installation. If this equipment does cause harmful interference to radio or television reception, which can be determined by turning the equipment off and on, the user is encouraged to try to correct the interference by one or more of the following measures:

- Reorient or relocate the receiving antenna.
- Increase the separation between the equipment and receiver.
- Connect the equipment into an outlet on a circuit different from that to which the receiver is connected.
- Consult the dealer or an experienced radio/TV technician for help.

7