



X20 QUICK START GUIDE



P2 MOBILE TECHNOLOGIES LIMITED



1 SmartMoment Quick Start Guide

1.1 Overview

SmartMoment (Lightweight Mode) is a built-in network setup tools and virtual controller designed to streamline the process of setting-up a Wi-Fi network.

1.2 Purpose

The lightweight mode allows you to:

- ✓ Set up a basic network with just three steps
- ✓ Configure IP address, netmask, gateway, DNS, SSID and password
- ✓ Have a quick overview of AP and client device

1.3 Connection Method

1. **Wireless**

- Power up the AP.
- Use mobile device to connect to the SSID “P2MTwifi” with password “p2mtuser”.
- Open the browser and type the IP address “172.16.0.1”.
- Navigate to the top menu bar and click *Lightweight* under *Mode*.

2. **Wired**

- Power up the AP.
- Connect the AP and the PC with a LAN cable.
- Set the IP of the PC to “192.168.1.2”
- Navigate to SmartMoment by “192.168.1.1”

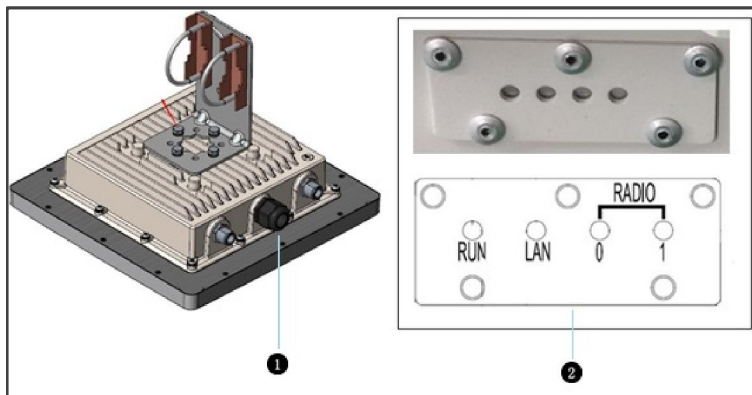
3. **Default Login Information**

- ❖ Username: p2mtadmin
- ❖ Password: p2mtadmin

1.4 Note

SmartMoment Lightweight mode is for basic configuration **ONLY**. Use the advance mode for advanced setting. For details, please refer to the SmartMoment User Guide.

2 Explanation of Ports



	Ports & Connectors	Quantity & Specifications			
1.	LAN Port	10/100/1000M Base-T Ethernet port (RJ-45), used as a WAN port and used for being powered by PoE function.			
2.	LED	LED	Function	State—Colour	Indication
		RUN	AP Power / Ready Status	Steady—Green	AP is ready.
				Off	No power to AP.
		LAN	Network Link Status	Steady—Green	1000Mbps Ethernet link negotiated.
				Flashing	Ethernet link activity.
				Off	Ethernet link unavailable.
		Radio 0	Integrated 5 GHz Radio Status	Steady—Green	Integrated 5 GHz radio is enabled.
				Off	Integrated 5 GHz radio is disabled.
		Radio 1	External 5 GHz Radio Status	Steady—Green	External 5 GHz radio is enabled.
				Off	External 5 GHz radio is disabled.
Note:	— AP that is not set up according to the instructions in the user				

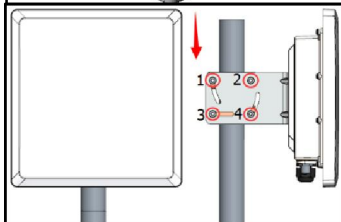
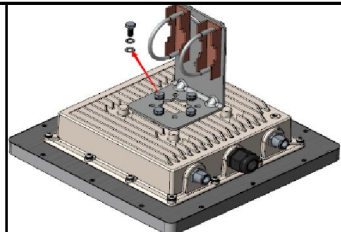
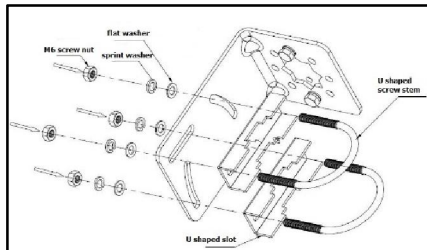


- manual may malfunction.
- The connection quality of the AP and Wi-Fi coverage vary with the actual environment.
- Only use the mounting kits that is compatible with the AP.
- Please refer to the network plan provided. Without adhering to the network plan may result in a network failure.
- For the best practice, please consult P2MT authorized engineers.

3 Mounting

3.1 Pole Mounting Procedure(Pole Size: Ø40-52mm)

1. Firstly install the L shaped clamp, with M6 screw nut, spring washer and flat washer. Four screws need be installed.
2. Put the U shaped screw stem and U shaped slot into the hole. And then drive the M6 crew nut and M6 washer.
3. Install the clamp on the back of the AP, with M6*12 screw bolt, M6 spring washer and M6 flat washer. Four screw bolts need be installed.
4. Input M6*12 screw bolt and M6 washer into the hole on the back and drive them.
5. Finally mount the AP on the pole as shown in the picture. And drive the screw nut tight with wrench.



-End of Quick Start Guide-

Federal Communications Commission (FCC) Interference Statement

This equipment has been tested and found to comply with the limits for a Class B digital device, pursuant to Part 15 of the FCC Rules.

These limits are designed to provide reasonable protection against harmful interference in a residential installation. This equipment generate, uses and can radiate radio frequency energy and, if not installed and used in accordance with the instructions, may cause harmful interference to radio communications. However, there is no guarantee that interference will not occur in a particular installation. If this equipment does cause harmful interference to radio or television reception, which can be determined by turning the equipment off and on, the user is encouraged to try to correct the interference by one of the following measures:

- Reorient or relocate the receiving antenna.
- Increase the separation between the equipment and receiver.
- Connect the equipment into an outlet on a circuit different from that to which the receiver is connected.
- Consult the dealer or an experienced radio/TV technician for help.

This device complies with Part 15 of the FCC Rules. Operation is subject to the following two conditions: (1) This device may not cause harmful interference, and (2) this device must accept any interference received, including interference that may cause undesired operation.

FCC Caution: Any changes or modifications not expressly approved by the party responsible for compliance could void the user's authority to operate this equipment.

RF exposure warning

This equipment complies with FCC radiation exposure limits set forth for an uncontrolled environment. This equipment must be installed and operated in accordance with provided instructions and the antenna(s) used for this transmitter must be installed to provide a separation distance of at least 141.59cm from all persons and must not be collocated or operating in conjunction with any other antenna or transmitter.