

X30 SERIES QUICK START GUIDE

This guide is applicable for X32, X32e and X33

Published Oct 2016, Rev 0.4

P2 WIRELESS TECHNOLOGIES

Copyright © 2016. P2 Wireless Technologies. All rights reserved.

Website: www.p2wt.com Email: info@p2wt.com

Tel: (+852) 3905 1880 Fax: (+852) 3695 0820

1 Quick Start Guide

1.1 [Packing List](#)

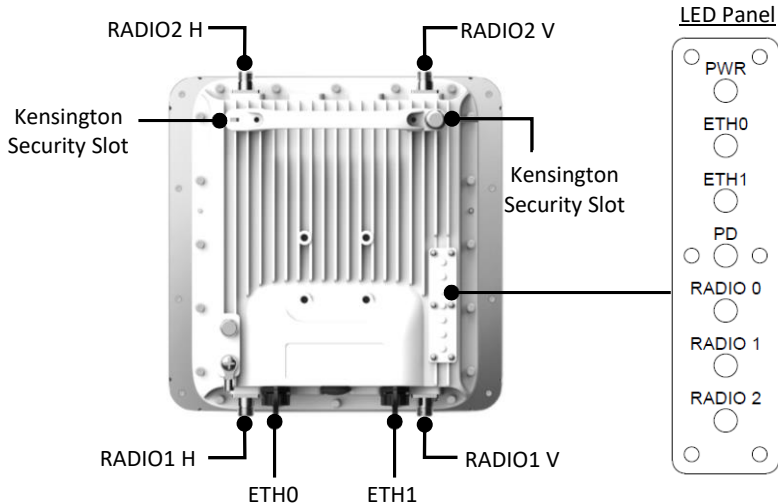
- X32 / X32e / X33 MeshRanger x 1
- Pole mounting kit x 1
- RJ45 waterproof connector x 2
- Quick start guide x 1

1.2 [Setup Procedures](#)

- **Required equipment**
 - A computer running Windows 7/8/10 with Google Chrome Browser installed
 - Two Cat 5e Ethernet Cables
 - 60W proprietary Gigabit PoE injector for X30 (sold separately)
- **Connect to the SmartMoment Web User Interface**
 1. Connect the “PoE” port on the PoE injector to the “ETH0” port on the X30 using an Ethernet cable.
 2. Connect your computer’s Ethernet port to the “LAN” port on the PoE injector using another Ethernet cable.
 3. Connect the AC plug on the PoE injector to power source to power up the X30.
 4. Verify the “PWR” LED on the X30 is in steady green.
 5. Configure the network adapter setting on your computer.
 - **Windows 7**
 - i. **Start > Control Panel > Network and Sharing Center > Change Adapter Settings**
 - **Windows 8/10**
 - i. **Start > Settings > Network & Internet > Ethernet > Network and Sharing Center > Change Adapter Settings**
 6. Right click on “Local Area Connection”.
 - **Local Area Connection > Properties > Internet Protocol Version 4 (TCP/IPv4) > Properties**
 7. Select “Use the following IP address” and fill-in IP address and subnet mask:
IP address: 192.168.1.2
Subnet mask: 255.255.255.0
 8. Click OK to save your changes.
 9. Open Google Chrome and type the URL <https://192.168.1.1>
 10. Login to the web interface with:
User name: p2wtadmin
Password: p2wtadmin
 11. Click Sign in and start to configure the X30 with the SmartMoment Web user interface.

For more information on how to configure the X30, please refer to the Product User Manual and the SmartMoment User Guide.

2 Port and LED Definition

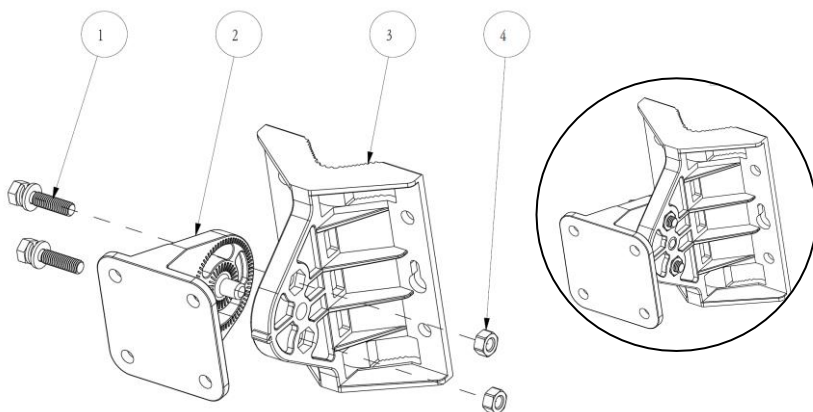


1. Port	Description		
ETH0	10/100/1000Mbps Base-T Ethernet port (RJ-45) with PoE IN function		
ETH1	10/100/1000Mbps Base-T Ethernet port (RJ-45) with PoE OUT function		
2. LED	Function	State - Colour	Indication
PWR	X30 Power / Ready Status	Steady – Green	X30 is ready
		Off	No power to X30
ETH0	Network Link Status	Steady – Green	1000Mbps Ethernet link negotiated
		Flashing	Ethernet link activity
		Off	Ethernet link unavailable
ETH1	Network Link Status	Steady – Green	1000Mbps Ethernet link negotiated
		Flashing	Ethernet link activity
		Off	Ethernet link unavailable
PD	Powered Device	Steady – Green	A PoE powered device is connected
		Off	No PoE powered device is connected
RADIO 0	Radio0 (5GHz) Status	Steady – Green	Radio0 (5GHz) is enabled
		Off	Radio0 (5GHz) is disabled

RADIO 1	Radio1 (5GHz) Status	Steady – Green	Radio1 (5GHz) is enabled
		Off	Radio1 (5GHz) is disabled
RADIO 2	Radio2 (Dual Band) Status	Steady – Green	Radio2 (Dual Band) is enabled
		Off	Radio2 (Dual Band) is disabled
Note: <ul style="list-style-type: none">- The X30 not set up according to the instructions in the user manual may malfunction.- The connection quality and Wi-Fi coverage of the X30 may vary between different environments.- Only use the mounting kits compatible with the X30. For the best practice, please consult P2 authorized engineers.			

3 Mounting

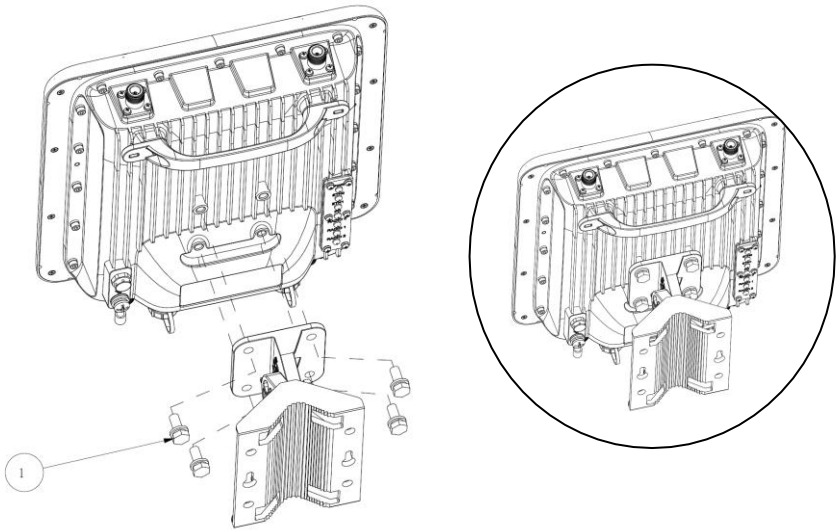
3.1 Pole Mounting Procedure (Pole Size Ø30-60 mm)



STEP 1: Assemble the Mounting Bracket Set

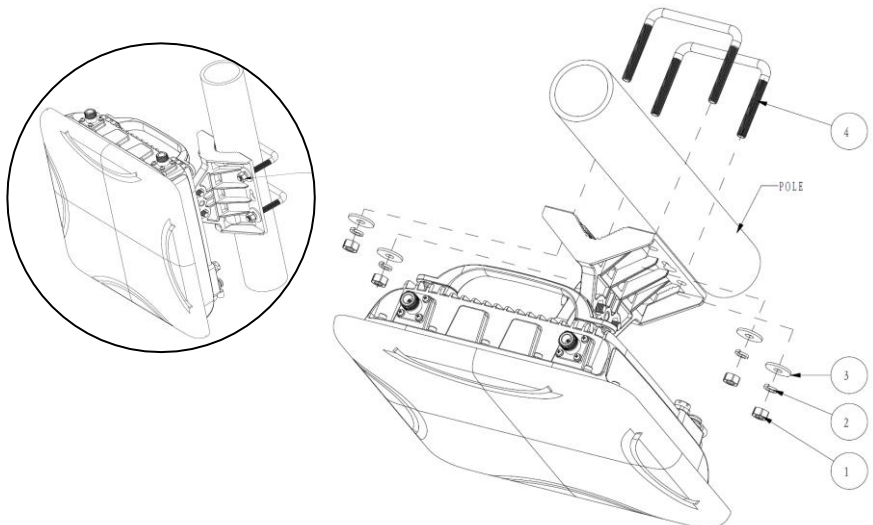
- (1) Attach the anchor bracket (item 2) to the mounting bracket (item 3) as shown in the picture.
- (2) Insert two hexagon nuts (item 4) into the hexagon hole of the mounting bracket (item 3).
- (3) Insert two hexagon bolts (item 1) with the flat washer and spring washer through the anchor bracket (item 2). Tighten the bolts on the hexagon nuts (item 4) with a torque value of 12-15 Nm (should not be greater than 20 Nm).

STEP 2: Attach the Mounting Bracket to the X30



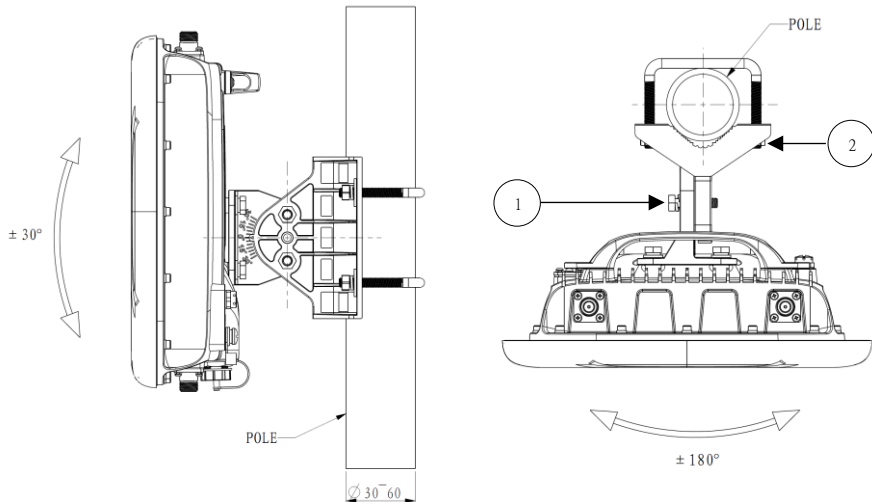
Attach the mounting bracket to the X30 with four M8 hexagon bolts (item 1) with a torque value of 12-15 Nm.

STEP 3: Attach the Mounting Bracket to a Pole



Install the mounting bracket and the X30 onto the pole with the U-shaped screw stem (item 4). Tighten each end of the U-shaped screw stem (item 4) with a M8 hexagon nut (item 1), a spring washer (item 2) and a flat washer (item 3) with a torque value of 12-15 Nm.

STEP 4: Adjust the Mounting Angle



There is a ± 30 degrees up/down tilt angle for the mounting bracket.

- (1) To adjust the up/down tilt angle, slightly loosen the hexagon bolts (item 1) and tilt up/down the X30 to the desired angle, then tighten it again at a torque value of 12-15 Nm.
- (2) To adjust the horizontal angle, loosen the M8 hexagon nuts (item 2) and slowly adjust the angle of the bracket, then tighten it again at a torque value of 12-15 Nm.

-End of Quick Start Guide-

Federal Communications Commission (FCC) Interference Statement

This equipment has been tested and found to comply with the limits for a Class B digital device, pursuant to Part 15 of the FCC Rules.

These limits are designed to provide reasonable protection against harmful interference in a residential installation. This equipment generate, uses and can radiate radio frequency energy and, if not installed and used in accordance with the instructions, may cause harmful interference to radio communications.

However, there is no guarantee that interference will not occur in a particular installation. If this equipment does cause harmful interference to radio or television reception, which can be determined by turning the equipment off and on, the user is encouraged to try to correct the interference by one of the following measures:

- Reorient or relocate the receiving antenna.
- Increase the separation between the equipment and receiver.
- Connect the equipment into an outlet on a circuit different from that to which the receiver is connected.
- Consult the dealer or an experienced radio/TV technician for help.

This device complies with Part 15 of the FCC Rules. Operation is subject to the following two conditions:

(1) This device may not cause harmful interference, and (2) this device must accept any interference received, including interference that may cause undesired operation.

FCC Caution: Any changes or modifications not expressly approved by the party responsible for compliance could void the user's authority to operate this equipment.

This transmitter must not be co-located or operating in conjunction with any other antenna or transmitter.

RF exposure warning

This equipment complies with FCC radiation exposure limits set forth for an uncontrolled environment. This equipment should be installed and operated with a minimum distance of 125cm between the radiator & your body.