



WIRELESS ACCESS POINT USER MANUAL

Z500

P2 Mobile Technologies Limited

©2015 All rights reserved

Contents

About This Guide	2
Product Overview	2
Safety Instructions	3
Package Contents.....	4
Possible Configurations.....	5
Explanation of Ports.....	5
Installation Procedure.....	6
Installation Environment	6
Pole Mounting Procedure (Pole Size: Ø40-52mm)	6
SmartMoment—Configuring the AP.....	8
Purpose	8
Connection Procedure	8
Wireless Method.....	8
Wired Method	8
Default Login Information.....	8
Note	8
Configuring and Monitoring the Access Point	9
Proper Disposal of Product	10
Waste of Electrical and Electronic Equipment.....	10
European Union RoHS.....	10
China RoHS.....	10
Safety and Regulatory Compliance	11
Basic Troubleshooting.....	12

About This Guide

This guide explains how to set up the access point Z500 for WLAN access in a general network deployment, and the various LED status indication.

Product Overview

Z500 is a carrier-grade dual-band 2x2 MIMO 802.11ac outdoor Wi-Fi AP, designed for deployments in outdoor locations. With an integrated high-gain dual-band panel antenna specially optimized for outdoor LOS and NLOS deployment, it is ideal for carrier application of last mile or single hop long distance wireless backhaul and stable outdoor Wi-Fi coverage.

Designed and tested for salt spray, vibration, extreme thermal conditions, shock and dust, the IP67-rated Z500 is weather-tolerant and is able to deliver uncompromised performance despite extreme environments.

Supporting 16 isolated SSIDs for each radio, Z500 simplifies access policy implementation, particularly useful for office environment or retailers who need to separate staff and guest use for security reason. Client access to different SSIDs are forbidden to visit each other and thus private information can be securely protected. Different QoS policy and authentication method can also be applied to each SSID, making it convenient to classify access roles.

Z500 is designed for easy and convenient centralized management through the MeshProvision Server. Better still, unlike the traditional thin AP model, Z500 can continue to operate perfectly even when the MeshProvision Server shuts down for any reason.

Safety Instructions

1. Read these safety instructions carefully before installation or usage.
2. Keep this user manual for later reference.
3. Disconnect the access point from the power source before cleaning. Use a damp cloth for cleaning. Do not use liquid or spray detergents.
4. To avoid risk of injury from electrical shock or energy hazard, installation and service of this product must be performed by qualified service personnel.
5. Install the access point on a reliable surface. Poor installation may cause it to fall onto people or equipment and make body injury and equipment damage.
6. Do not install the access point near the power line, electric lamp, power grid, or in any forceful power grid place.
7. To acquire steady power, connect the PoE port with a network cable under 50m. The network cable complies with the DC resistance definition in the YD/926.2 protocol.
8. Make sure the voltage of the power source is correct before connecting the access point to the power outlet.
9. Use a steady power source to ensure normal functioning.
10. Ensure the power adapter is grounded well when installing the access point indoor.
11. The lightning protection module inside the device is basic. Install any additional protection if necessary.
12. Position the power cord so that people cannot step on it. Do not place anything over the power cord.
13. All cautions and warnings on the device should be noted.
14. If the access point is not used for a long time, disconnect it from the power source to avoid damage by transient overvoltage.
15. Never open the access point. For safety reasons, the access point should be opened only by qualified service personnel.
16. If one of the following situations arises, get the equipment checked by service personnel:
 - i. The power cord or plug is damaged.
 - ii. Liquid has penetrated into the access point.
 - iii. The access point does not work well, or you cannot get it to work according to the user's manual.
 - iv. The access point has been dropped and damaged.
 - v. The access point has obvious signs of breakage.
17. **DO NOT LEAVE THE ACCESS POINT IN AN ENVIRONMENT WHERE THE STORAGE TEMPERATURE MAY GO BELOW 0° C OR ABOVE 45° C. THIS COULD DAMAGE THE ACCESS POINT.**

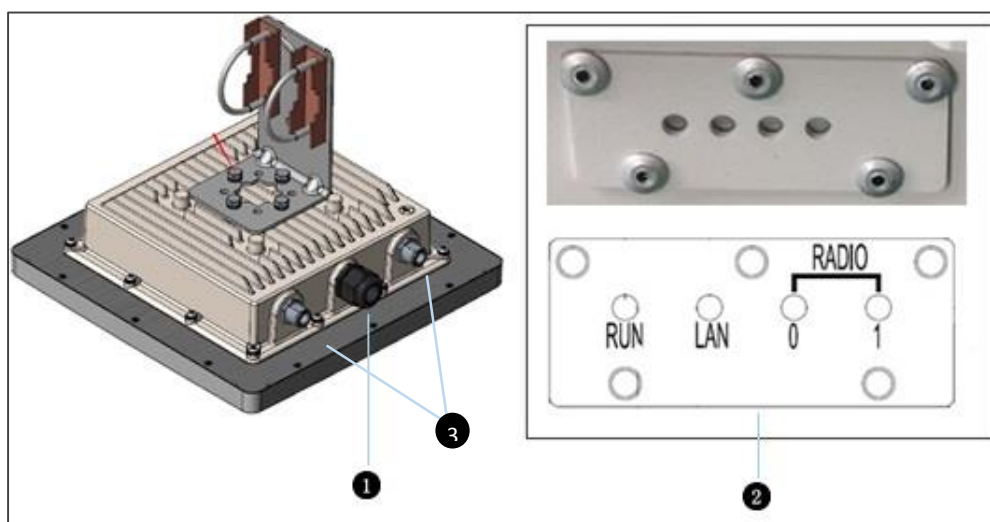
Package Contents

- Access Point Z500 × 1
- Pole Mounting Kit × 1
- LAN Port Water-proof Connector × 1

Inform your supplier if there are any incorrect, missing, or damaged parts.

Possible Configurations

Explanation of Ports



	Ports & Connectors	Quantity and Specifications			
1.	LAN Port	10/100/1000M Base-T Ethernet port (RJ-45), used as a WAN port and used for being powered by PoE function.			
2.	LED	LED	Function	State—Colour	Indication
		RUN	AP Power / Ready Status	Steady—Green	AP is ready.
				Off	No power to AP.
		LAN	Network Link Status	Steady—Green	1000Mbps Ethernet link negotiated.
				Flashing	Ethernet link activity.
				Off	Ethernet link unavailable.
		Radio 0	Integrated 2.4 GHz Radio Status	Steady—Green	Integrated 2.4 GHz radio is enabled.
				Off	Integrated 2.4 GHz radio is disabled.
Radio 1	External 5 GHz Radio Status	Steady—Green	External 5 GHz radio is enabled.		
		Off	External 5 GHz radio is disabled.		
3.	External Antennas Connectors	Through the N-Type connector, the access point can be connected with various types of antenna for optimized results of different deployment scenarios.			

- Note:**
- AP that is not set up according to the instructions in the user manual may malfunction.
 - The connection quality of the AP and Wi-Fi coverage vary with the actual environment.
 - Only use the mounting kits that is compatible with the AP.
 - Please refer to the network plan provided. Without adhering to the network plan may result in a network failure.
 - For the best practice, please consult P2MT authorized engineers.

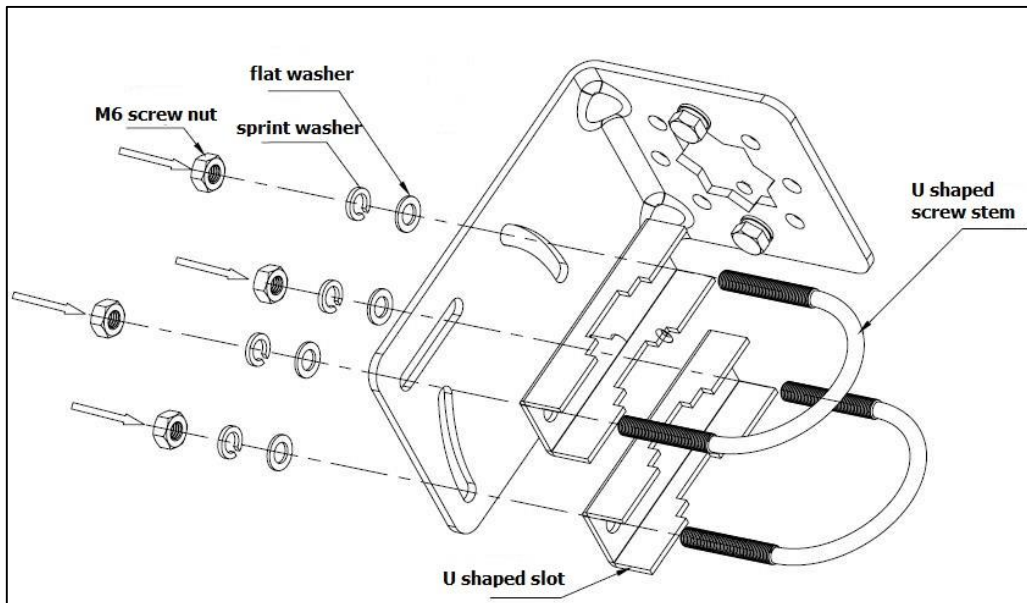
Installation Procedure

Installation Environment

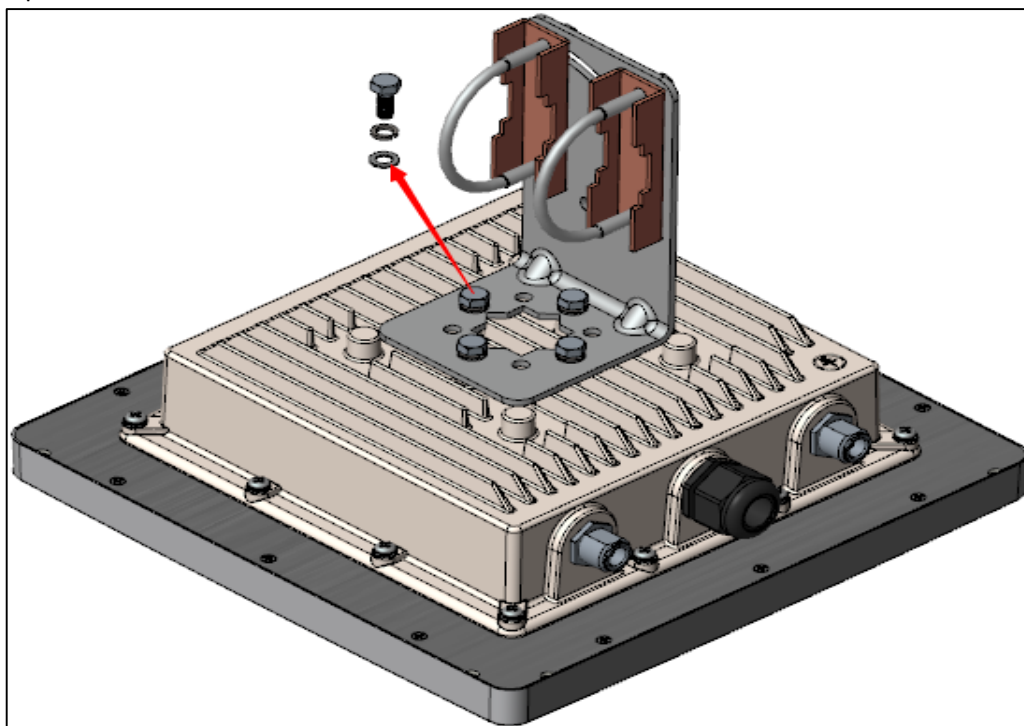
- Operating ambient temperature: -40°C-65°C
- Operating ambient humidity: 5%-95% non-condensing

Pole Mounting Procedure (Pole Size: Ø40-52mm)

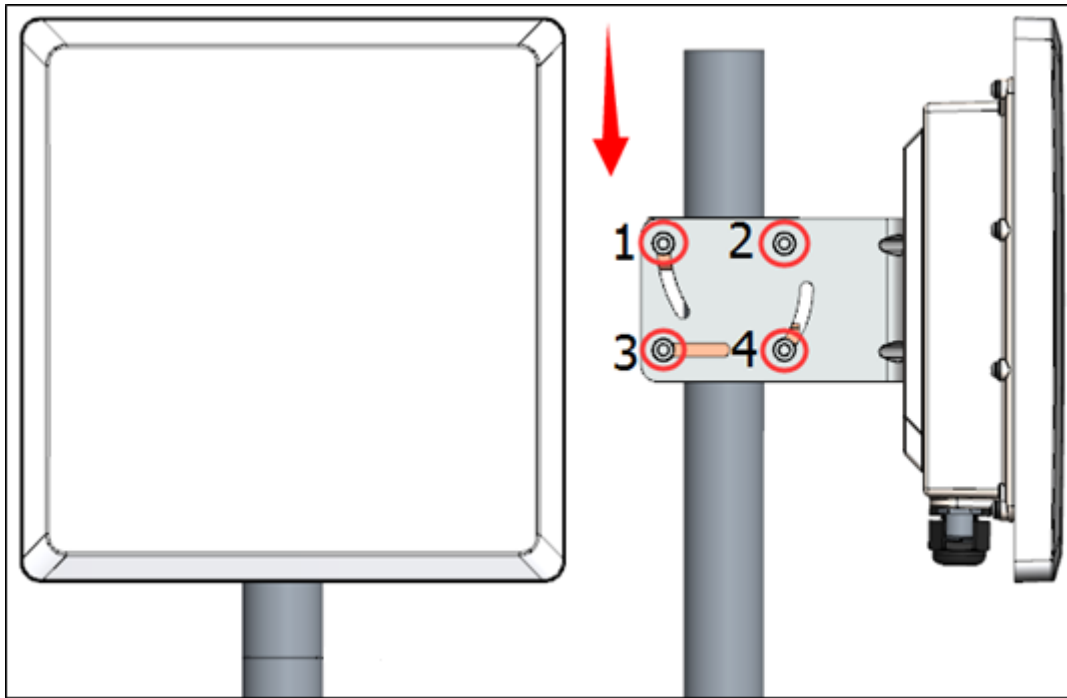
1. Firstly install the L-shaped clamp, with M6 screw nut, spring washer and flat washer. Four screws need be installed.
2. Put the U-shaped screw stem and U-shaped slot into the hole. And then drive the M6 crew nut and M6 washer.



3. Install the clamp on the back of the AP, with M6*12 screw bolt, M6 spring washer and M6 flat washer. Four screw bolts need be installed.
4. Input M6*12 screw bolt and M6 washer into the hole on the back and drive them.



5. Finally mount the AP on the pole as shown in the picture. And drive the screw nut tight with wrench.



SmartMoment—Configuring the AP

The Z500 comes with the built-in SmartMoment (Lightweight Mode) for basic configuration of the AP. To configure the AP, connect it through wireless or wired method.

Purpose

The lightweight mode allows you to:

- ✓ Set up a basic network with just three steps
- ✓ Configure IP address, netmask, DNS, SSID and password
- ✓ Have a quick overview of AP and client device

Connection Procedure

Wireless Method

1. Power up the AP.
2. Use a Wi-Fi-enabled device to connect to the SSID “P2MTWifi” with password “p2mtuser”.
3. Open the browser and type the IP address “172.16.0.1”.
4. Navigate to the top menu bar and click *Lightweight* under *Mode*.

Wired Method

1. Power up the AP.
2. Connect the AP and the PC with a LAN cable.
3. Set the IP of the PC to “192.168.1.2”.
4. Navigate to SmartMoment by “192.168.1.1”.
5. Navigate to the top menu bar and click *Lightweight* under *Mode*.

Default Login Information

- ❖ Username: p2mtadmin
- ❖ Password: p2mtadmin

Note

SmartMoment Lightweight mode is for basic configuration **ONLY**. Use the advance mode for advanced setting. For details, please refer to the SmartMoment User Guide.

Configuring and Monitoring the Access Point

The web-based configuration and monitoring platform, MeshProvision Server, is specially designed for the P2MT wireless network architecture including Z500. You can configure and monitor the entire network right from your fingertips in a centralized manner, and from anywhere in the world.

Unlike a WLAN controller (or so-called access controller), the MeshProvision Server is NOT required to be running for the wireless network to operate. In other words, it can be shut down without affecting the wireless network at all. Therefore, it will never be the Single-Point-Of-Failure by any means.

The Z500 supports traffic monitoring, configuration broadcast, map configuration and email notification for an easy and convenient approach of network deployment and maintenance. These functions should be performed with the MeshProvision Server.

For more details on how to configure and monitor the Z500, please refer to the MeshProvision Server User Guide.

Proper Disposal of Product

Waste of Electrical and Electronic Equipment



Directive 2002/96/EC on Waste of Electrical and Electronic Equipment are designed to tackle the fast increasing waste stream of electrical and electronic equipment and complements European Union measures on landfill and incineration of waste. The Z500 AP at end of life are subject to separate collection and treatment in the EU Member States and therefore are marked with the symbol.

European Union RoHS



EU Restriction and Hazardous Substances Directive 2011/65/EC (RoHS) restricts the use of specific hazardous materials in manufacture of electrical and electronic equipment. Specially, restricted materials are Lead, Cadmium, Mercury, Hexavalent Chromium, and Bromine. The Z500 AP complies with this requirement and all marked with "RoHS" shown at the left.

China RoHS

The Z500 AP complies with China environmental declaration requirements and is labeled with "EFUP 20" label shown as follows.

有毒有害物质声明

Hazardous Materials Declaration

部件名称 (Parts)	有毒有害物质或元素 (Hazardous Substance)					
	铅 (Pb)	汞 (Hg)	镉 (Cd)	六价铬 (Cr6+)	多溴联苯 (PBB)	多溴二苯醚 (PBDE)
电路模块 (circuit modules)	x	○	○	○	○	○
电缆及电缆组件 (Mechanical assemblies)	x	○	○	○	○	○
金属部件 (Metal Parts)	○	○	○	○	○	○
塑料和聚合物部件 (Plastic and Polymeric Parts)	○	○	○	○	○	○

O :

表示该有毒有害物质在该部件所有均质材料中的含量在 SJ/T11363 — 2006标准规定的限量要求下。

Indicates that the concentration of the hazardous substance in all homogeneous materials in the parts is below the relevant threshold of the SJ/T11363-2006 standard.

X :

表示该有毒有害物质至少在该部件的某一均质材料中的含量超出SJ/T11363-2006标准规定的限量要求。

Indicates that the concentration of the hazardous substance of at least one of all homogeneous materials in the parts is above the relevant threshold of the SJ/T11363-2006 standard.

对销售之日的所售产品，本表显示P2MT供应链的电子信息产品可能包含这些物质。注意：在所售产品中可能会也可能不会含有所有所列的部件。

This table shows where these substances may be found in the supply chain of P2MT electronic information products, as of the date of sale of the enclosed product. Note that some of the component types listed above may or may not be a part of the enclosed product.



除非另外特别的标注，此标志为针对所涉及产品的环保使用期标志。某些零部件会有一个不同的环保使用期贴在其产品上。此环保使用期限只适用于产品是在产品手册中规定的条件下工作。

The Environment-Friendly Use Period (EFUP) for all enclosed products and their parts are per the symbol shown here, unless otherwise marked. Certain parts may have a different EFUP and so are marked to reflect such. The Environment-Friendly Use Period is valid only when the product is operated under the conditions defined in the product manual.

Safety and Regulatory Compliance

The Z100 AP has been tested and complied with the standards as follows:

- FCC DOC Part 15 Class B (US)
- FCC Part 15 Subpart C 15.247 (US)
- FCC Part 15 Subpart E 15.407 (US)

Basic Troubleshooting

Problem	Solution
The RUN indicator is off.	Check that the power adapter is plugged into a live AC outlet.
	Check the power cable for shorts or breaks.
	Check whether the connection between the LAN/PoE port of the combiner and the LAN/PoE port is correct.
The LAN port indicator is off.	Check whether the connection between the LAN/PoE port of the combiner and the LAN/PoE port is correct.

-End of User Guide-



P2 Mobile Technologies Limited

©2015 All rights reserved

P2MT reserves the right to change, modify, transfer or otherwise revise the publication and the product specifications without notice. While P2MT has used commercially reasonable efforts to ensure the accuracy of the specifications contained in this document, P2MT assumes no responsibility for any errors or omissions. All scaling metrics outlined in this document are maximum supported values. The scale may vary depending upon the deployment scenario and features enabled.

Federal Communications Commission (FCC) Interference Statement

This equipment has been tested and found to comply with the limits for a Class B digital device, pursuant to Part 15 of the FCC Rules.

These limits are designed to provide reasonable protection against harmful interference in a residential installation. This equipment generate, uses and can radiate radio frequency energy and, if not installed and used in accordance with the instructions, may cause harmful interference to radio communications. However, there is no guarantee that interference will not occur in a particular installation. If this equipment does cause harmful interference to radio or television reception, which can be determined by turning the equipment off and on, the user is encouraged to try to correct the interference by one of the following measures:

- Reorient or relocate the receiving antenna.
- Increase the separation between the equipment and receiver.
- Connect the equipment into an outlet on a circuit different from that to which the receiver is connected.
- Consult the dealer or an experienced radio/TV technician for help.

This device complies with Part 15 of the FCC Rules. Operation is subject to the following two conditions: (1) This device may not cause harmful interference, and (2) this device must accept any interference received, including interference that may cause undesired operation.

FCC Caution: Any changes or modifications not expressly approved by the party responsible for compliance could void the user's authority to operate this equipment.

RF exposure warning

This equipment complies with FCC radiation exposure limits set forth for an uncontrolled environment. This equipment must be installed and operated in accordance with provided instructions and the antenna(s) used for this transmitter must be installed to provide a separation distance of at least 129cm from all persons and must not be collocated or operating in conjunction with any other antenna or transmitter.