

FLOWBIRD

Parc Lafayette
6 rue Isaac Newton
25075 Besançon
France
+33 3 81 54 56 00
Contact@flowbird.group

V3 CLESS User Manual

FLOWBIRD

Parc Lafayette
6 rue Isaac Newton
25075 Besançon
France
+33 3 81 54 56 00
Contact@flowbird.group

FOREWORD

INSTALLATION. We recommend you to read these instructions very carefully. They are included with your V3 CLESS Reader in order to explain its installation.

USE. Once it is installed and equipped with the application you case use your V3 CLESS reader.

GUARANTEE AND SAFETY. In order to benefit from the guarantee on this equipment and in order to follow the safety instructions, only authorized person shall entrust assembly or disassembly procedures and installed the reader.

CONTENTS

1-	SAFETY INSTRUCTIONS.....	3
2-	UNPACKING. PRODUCT CONTENTS.....	4
3-	DESCRIPTION OF THE RF READER.....	5
4-	INSTALLING THE V3 CLESS.....	13
	4.1 CLESS reader.....	13
	4.2 Antenna.....	14
5-	INSTALLING AND REMOVING SECURITY ACCESS MODULES.....	15
6-	DAILY USE.....	16
7-	V3 CLESS CHARACTERISTICS.....	16
8-	EC STANDARD COMPLIANCE MARKING.....	17
9-	FCC COMPLIANCE STATEMENT.....	17

FLOWBIRD

Parc Lafayette
6 rue Isaac Newton
25075 Besançon
France
+33 3 81 54 56 00
Contact@flowbird.group

1- SAFETY INSTRUCTIONS

A- In order to power down your V3 CLESS :

Disconnect the V3 CLESS power supply block from the electric power supply network

B- Electrical power supply

Only use Flowbird CLESS reader cable
Only use Flowbird antenna cable with it's Ferrite for EMI protection
The V3 CLESS input voltage should be +12VDC +/- 10%

C- Reader cover Flap

The cover flap located on the side (see chapter – installation and removal of Sams) must be in place during normal operation

D- Warning

Changes or modifications not expressly approved by the party responsible for compliance could void the user's authority to operate the equipment.

This device must be professionally installed

FLOWBIRD

Parc Lafayette
6 rue Isaac Newton
25075 Besançon
France
+33 3 81 54 56 00
Contact@flowbird.group

2- UNPACKING. PRODUCT CONTENTS

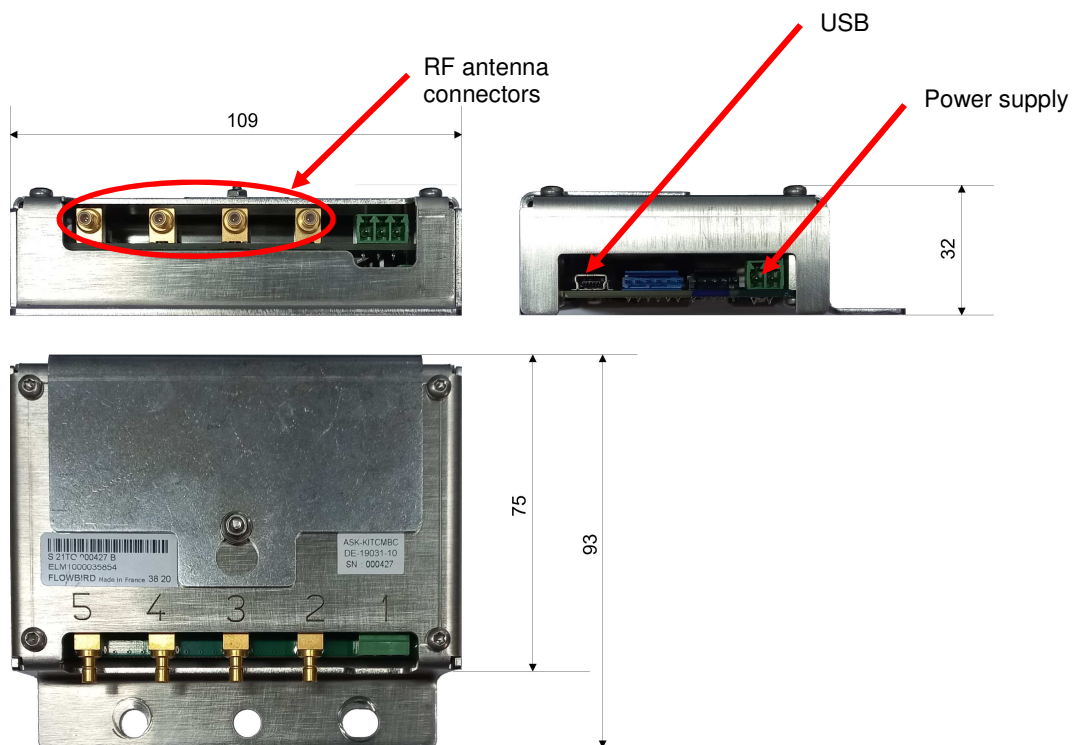
Carefully preserve the packaging of the V3 CLESS and the antenna. It must be re-used whenever the reader is shipped.

FLOWBIRD

Parc Lafayette
6 rue Isaac Newton
25075 Besançon
France
+33 3 81 54 56 00
Contact@flowbird.group

3- DESCRIPTION OF THE RF READER

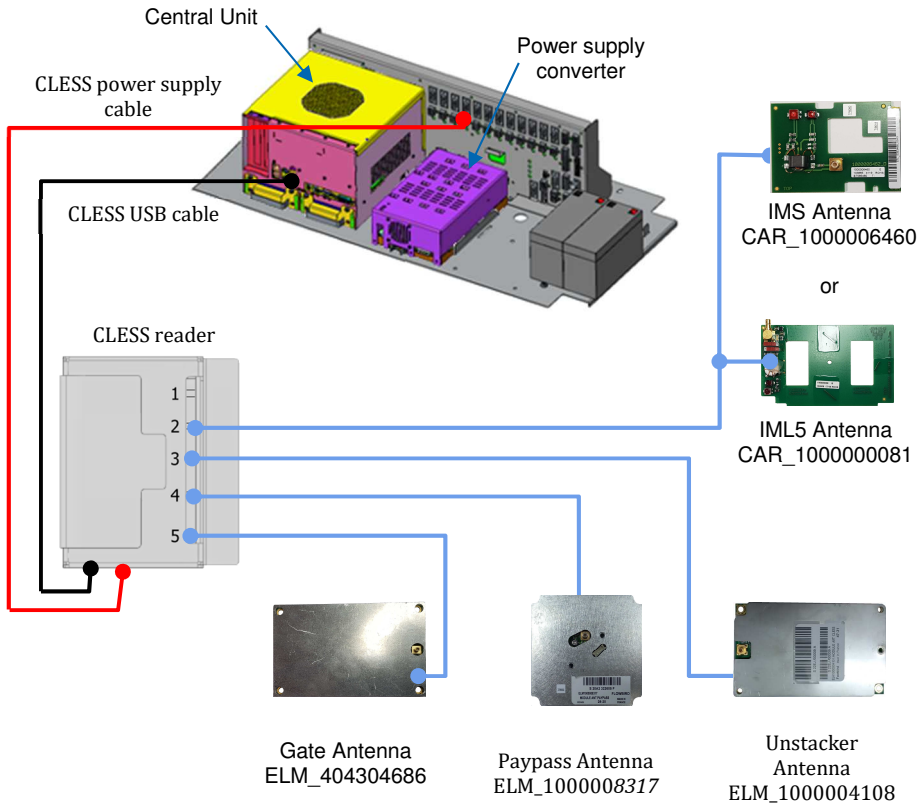
Reminder of Safety Instructions :
Select the recommended electrical Power from Excelsys



FLOWBIRD

Parc Lafayette
6 rue Isaac Newton
25075 Besançon
France
+33 3 81 54 56 00
Contact@flowbird.group

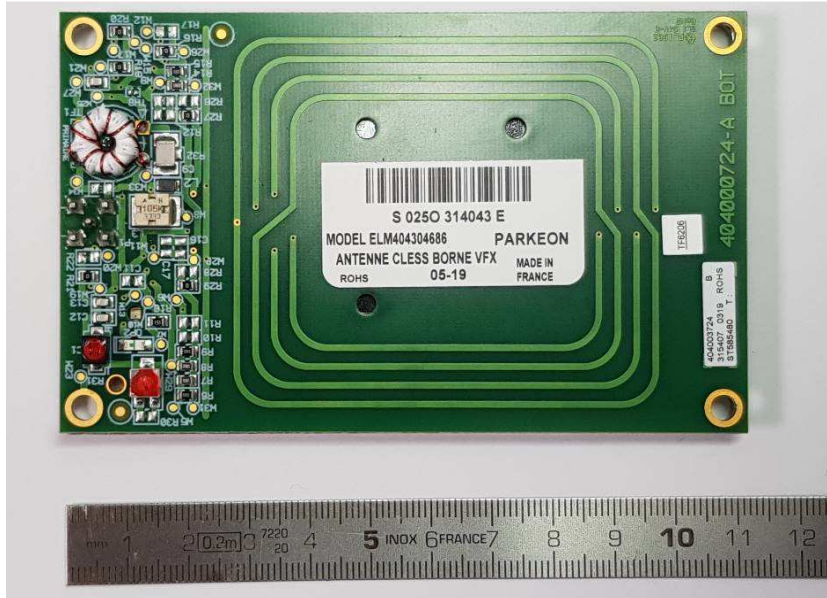
Diagram of connection



FLOWBIRD

Parc Lafayette
6 rue Isaac Newton
25075 Besançon
France
+33 3 81 54 56 00
Contact@flowbird.group

Only 5 different antennas can be integrated (ref ELM_404304686/ ELM_1000004108 / CAR_1000000081 / CAR_1000006460 / ELM_1000008317)



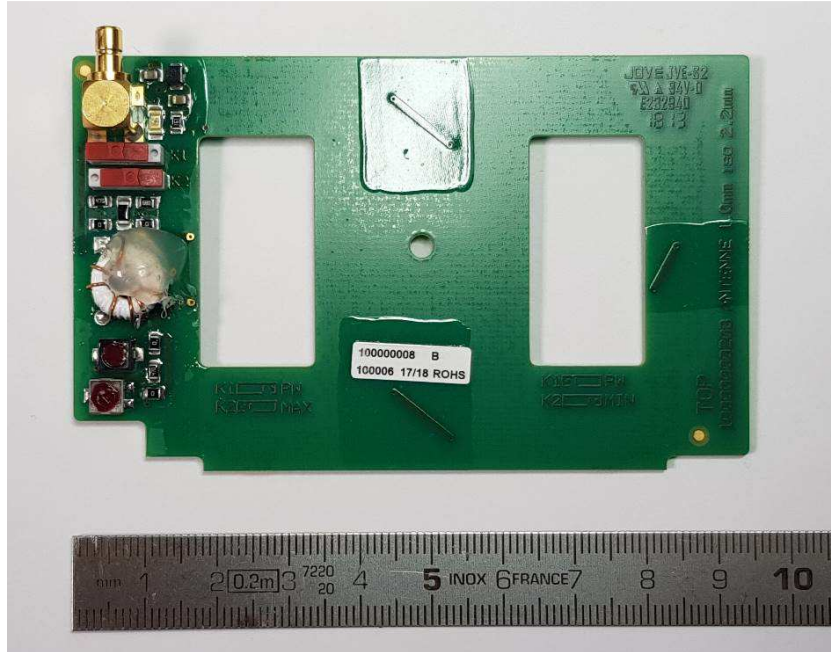
Gate antenna Top (ELM_404304686)



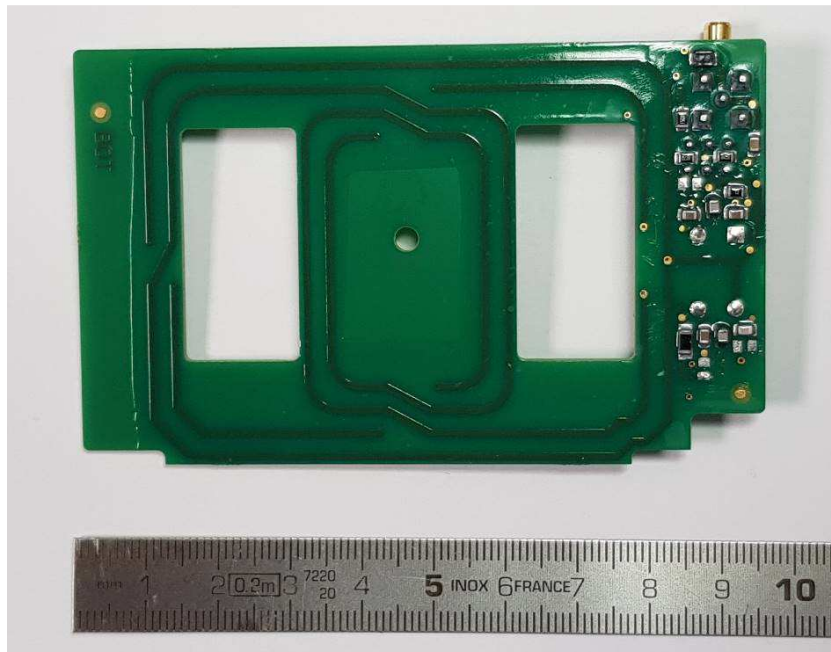
Gate antenna Bot (ELM_404304686)

FLOWBIRD

Parc Lafayette
6 rue Isaac Newton
25075 Besançon
France
+33 3 81 54 56 00
Contact@flowbird.group



IML5 antenna Top (CAR_1000000081)



IML5 antenna Bot (CAR_1000000081)

FLOWBIRD

Parc Lafayette
6 rue Isaac Newton
25075 Besançon
France
+33 3 81 54 56 00
Contact@flowbird.group



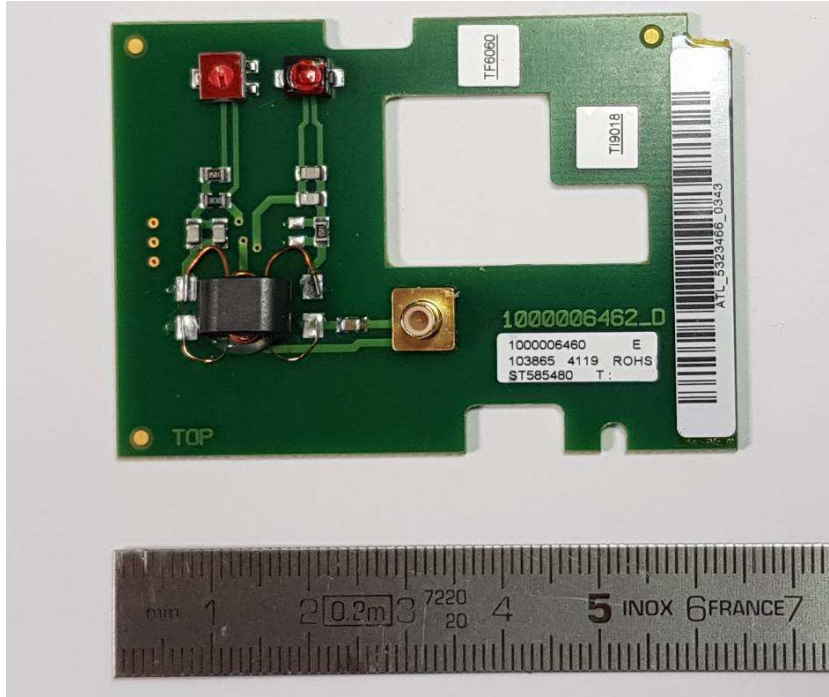
Unstacker antenna Top (ELM_100004108)



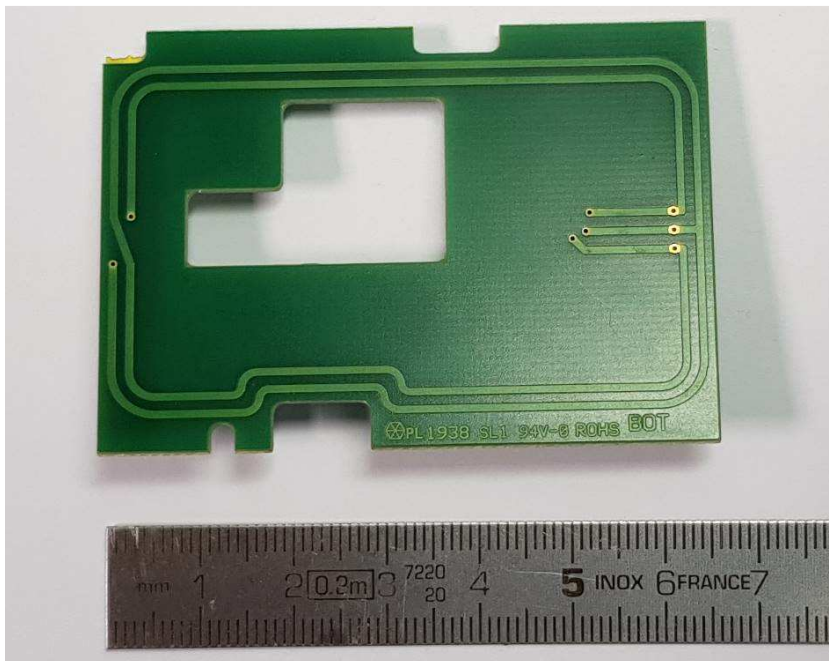
Unstacker antenna Bot (ELM_100004108)

FLOWBIRD

Parc Lafayette
6 rue Isaac Newton
25075 Besançon
France
+33 3 81 54 56 00
Contact@flowbird.group



IMS antenna Top (CAR_100006460)



IMS antenna Bot (CAR_100006460)

FLOWBIRD

Parc Lafayette
6 rue Isaac Newton
25075 Besançon
France
+33 3 81 54 56 00
Contact@flowbird.group



Paypass antenna Top (ELM_1000008317)



Paypass antenna Bot (ELM_1000008317)

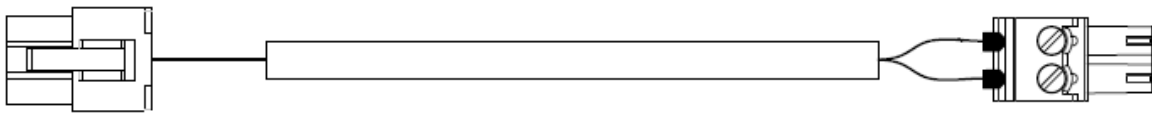
FLOWBIRD

Parc Lafayette
6 rue Isaac Newton
25075 Besançon
France
+33 3 81 54 56 00
Contact@flowbird.group

Contactless reader cabling

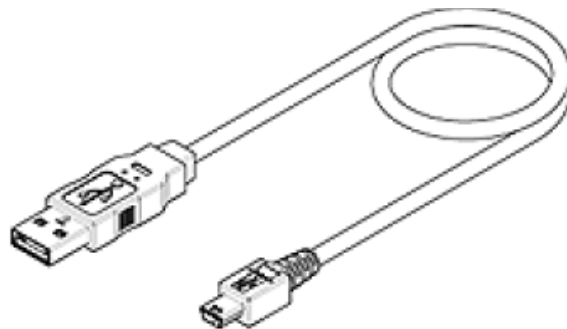
Power cable

The CLESS reader is supplied with the connection card via a cable marked "PARAGON READER".



Communications cable

The connection between the CLESS reader and the PC is made with a USB/mini USB cable



Antenna cable

The connection between the reader module and the different antennas is made with a coaxial cable



FLOWBIRD

Parc Lafayette
6 rue Isaac Newton
25075 Besançon
France
+33 3 81 54 56 00
Contact@flowbird.group

4- INSTALLING THE V3 CLESS

4.1 CLESS reader

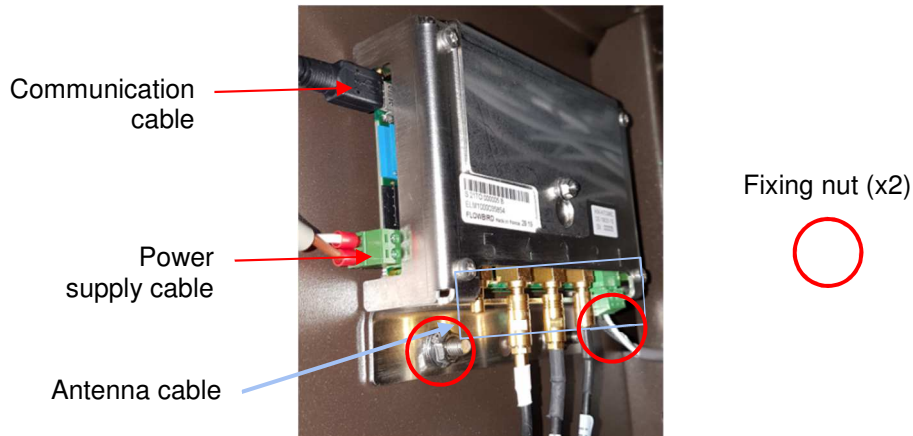
Tools required: an 8 mm open-end spanner

Time required for the intervention: 2 min

Other components to remove/Preliminaries: switch off the power to the devices in EMS mode or with the button on the front of the CPU.

Screw the two bolts holding the CLESS READER.

Connect the cables on CLESS reader.



Press the power button device of the CPU.

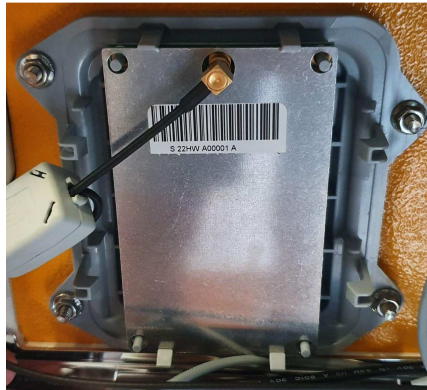
Perform a functional test using the "test connection map" from the menu EMS "travel card reader".

FLOWBIRD

Parc Lafayette
6 rue Isaac Newton
25075 Besançon
France
+33 3 81 54 56 00
Contact@flowbird.group

4.2 Antenna

Tools required: none
Clip the antenna into the bracket
Connect the antenna cable.



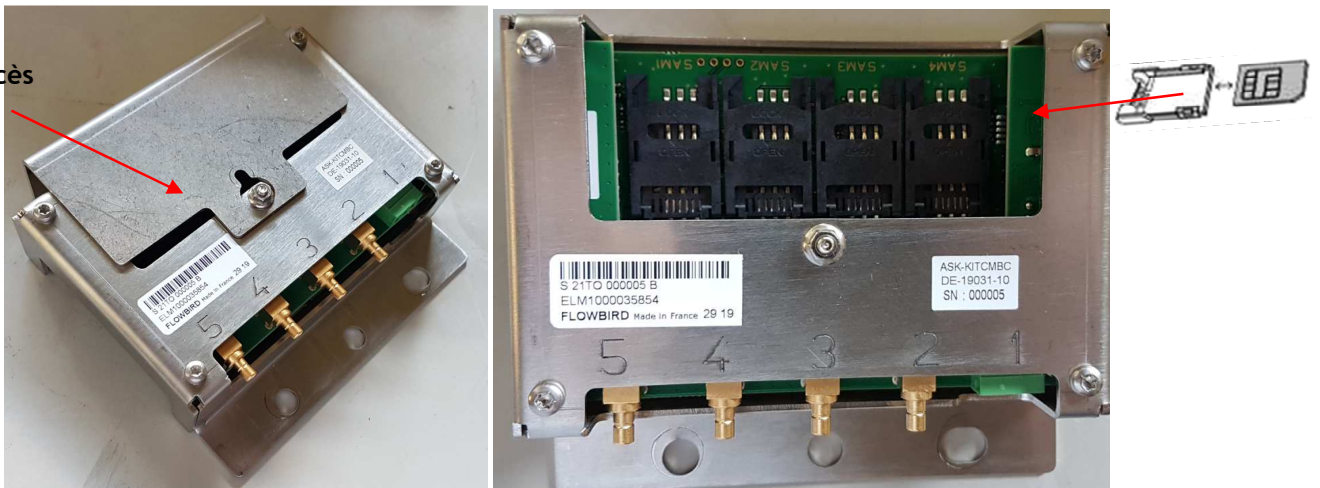
FLOWBIRD

Parc Lafayette
6 rue Isaac Newton
25075 Besançon
France
+33 3 81 54 56 00
Contact@flowbird.group

5- INSTALLING AND REMOVING SECURITY ACCESS MODULES

Tools required: an 5.5 mm open-end spanner
Time required for the intervention: 2 min
Unscrew the nut that secures the SAM access panel.
Remove the cover.
Insert the SIM cards.
Replace the cover.
Tighten the nut that locks the door.

Trappe d'accès
aux SAMs



FLOWBIRD

Parc Lafayette
6 rue Isaac Newton
25075 Besançon
France
+33 3 81 54 56 00
Contact@flowbird.group

6- DAILY USE

No specific care shall be done. Clean the antenna each year with Isopropanol

7- V3 CLESS CHARACTERISTICS

Physical Characteristics

Mass : approximately 300g without cable

Dimensions : approximately 109x93x32 mm (LxWxH)

Standards

See "EC standard compliance marking" in appendix

Operating conditions

Class II equipment

Electric supply network : 12VDC +/- 10%

Max. consumption : 0.5 A

Ambiant temperature : from -20°C to +60°C

Max. relative humidity : 90% at +60°C

Communication : USB2.0 full speed interface

Storage conditions

Storage temperature : -40°C, +70°C

Max relative humidity : 90% at +60°C

FLOWBIRD

Parc Lafayette
6 rue Isaac Newton
25075 Besançon
France
+33 3 81 54 56 00
Contact@flowbird.group

8- EC STANDARD COMPLIANCE MARKING

This product complies with the rules for CE marking. The applicable directives depend on the presence of the radio communication option:

The product complies with the following directives:

Directive 2014/53/EU of the European Parliament and of the Council of 16 April 2014 on the harmonisation of the law of the Member States relating to the making available on the market of radio equipment and repealing Directive 1999/5/EC
Council Recommendation 1999/519/EC of 12 July 1999 on the limitation of exposure of the general public to electromagnetic fields (0 Hz to 300 GHz)

9- FCC COMPLIANCE STATEMENT

This equipment has been tested and found to comply with the limits for a Class B digital device, pursuant to part 15 of the FCC Rules. These limits are designed to provide reasonable protection against harmful interference in a residential installation. This equipment generates, uses and can radiate radio frequency energy and, if not installed and used in accordance with the instructions, may cause harmful interference to radio communications. However, there is no guarantee that interference will not occur in a particular installation. If this equipment does cause harmful interference to radio or television reception, which can be determined by turning the equipment off and on, the user is encouraged to try to correct the interference by one or more of the following measures:


- Reorient or relocate the receiving antenna.
- Increase the separation between the equipment and receiver.
- Connect the equipment into an outlet on a circuit different from that to which the receiver is connected.
- Consult the dealer or an experienced radio/TV technician for help

This equipment with its antenna complies with FCC's radiation exposure limits set forth for an uncontrolled environment. To maintain compliance, follow the instructions below :

1. This transmitter must not be co-located or operating in conjunction with any other antenna or transmitter.
2. Avoid direct contact to the antenna, or keep contact to a minimum while using this equipment.

FLOWBIRD

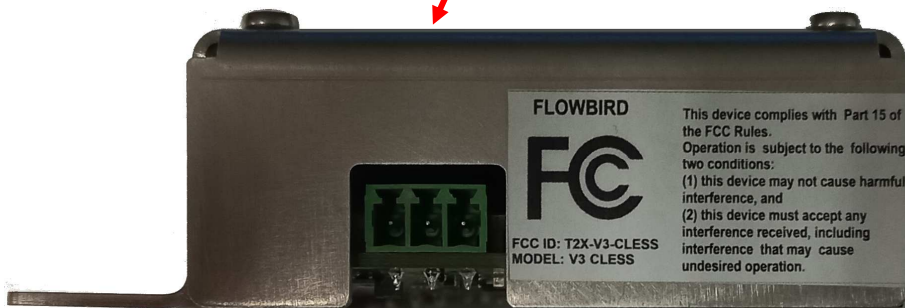
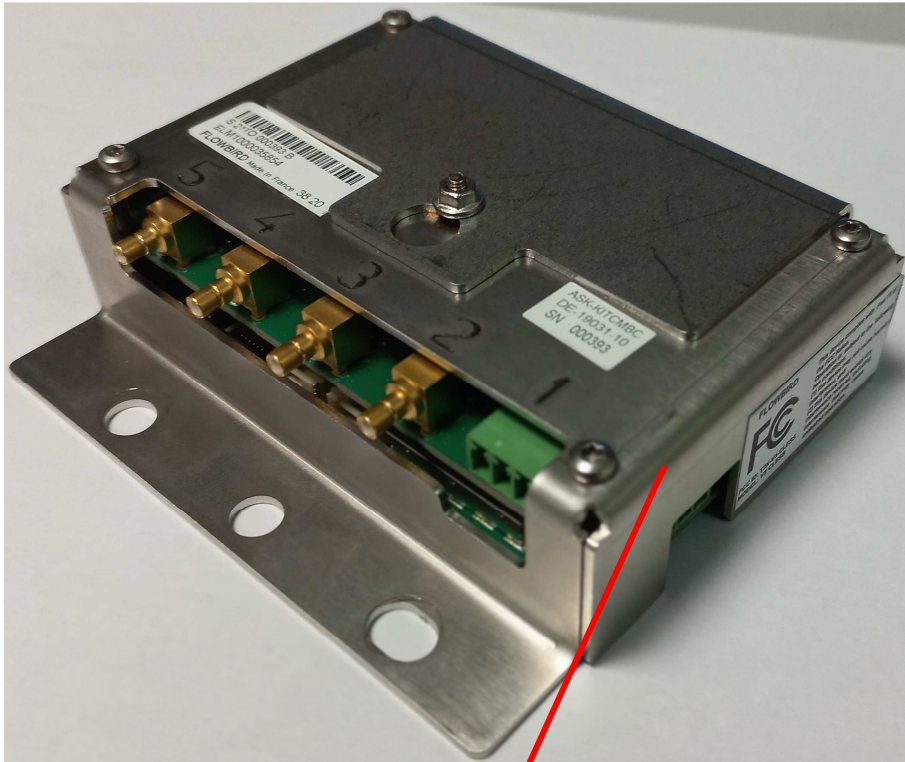
Parc Lafayette
6 rue Isaac Newton
25075 Besançon
France
+33 3 81 54 56 00
Contact@flowbird.group

<p>FLOWBIRD</p>  <p>FCC ID: T2X-V3-CLESS MODEL: V3 CLESS</p>	<p>This device complies with Part 15 of the FCC Rules. Operation is subject to the following two conditions: (1) this device may not cause harmful interference, and (2) this device must accept any interference received, including interference that may cause undesired operation.</p>
--	--

FCC label placed on the CLESS reader

FLOWBIRD

Parc Lafayette
6 rue Isaac Newton
25075 Besançon
France
+33 3 81 54 56 00
Contact@flowbird.group



POSITION OF THE FCC ID