

1. Model Name : Neck Band Bluetooth Headset
2. Part Number : PSB-100
3. Manufacturer : PARTRON Co., Ltd.
4. Country of Origin : Republic of Korea
5. Address : 22, Samsung 1-ro 2-gil, Hwaseong, Gyeonggi 445-170, Korea

Please take the time to follow the instructions in this owner's guide carefully.  
 Appearance and specifications of this product are subject to change without prior notice for product improvement.

**This device must accept any interference received, including interference that may cause undesired operation.**

## Wireless Stereo Headset Croise.R PSB-100

### User Manual



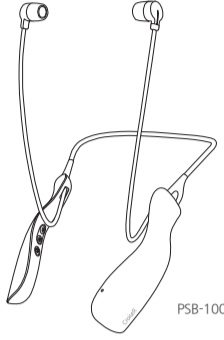
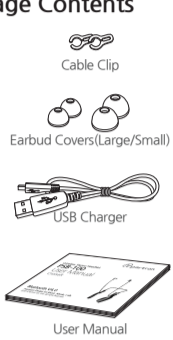
**HD Sound + HD Voice**  
**Premium Design for Music, Movie, Calls**  
 ©2014 Partron Co., Ltd. All rights Reserved.

### Package Contents

PSB-100 User Manual

Package Contents	4
Description of Parts	5
Installation of Cable Clip	6
Product Specifications and Features	7
How to use	8
Power on/off	8
Charging	8
Pairing	10
Calling	11
Transferring a Call	12
Volume Control	13
Music Play	13
Multi-Connection	15
Using Croise.R Reader Application	16
Button Functions and Status Information	17
Precautions	20
Product Warranty and Service	20
Limited Warranty	21
Product Warranty Certificate	23

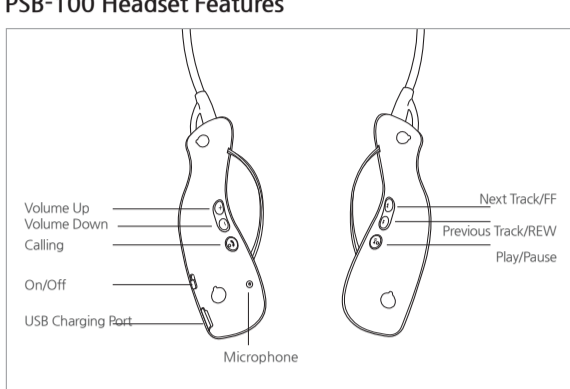
### Package Contents



※ The components of above package are subject to change without notice to improve the product performance or quality.

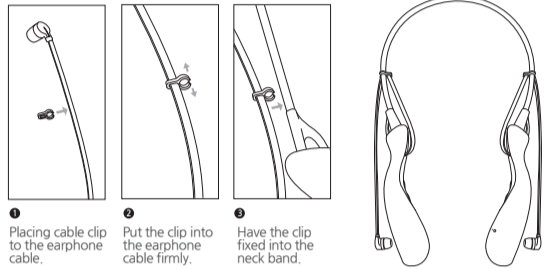
04

### PSB-100 Headset Features



05

### Installation of Cable Clip



※ The components of above package are subject to change without notice to improve the product performance or quality.

06

### Product Specifications and features

Standby Time	400 hours
Operating Time(Music)	12 hours
Operating Time(Talk)	12 hours
Charging Time	2 hours
Battery	Lithium Polymer Battery 3.7V (195mAh)
Working Distance	10m
Supported profiles	HFP/ HSP/ A2DP/ AVRCP
Decoder	SBC, APT-X
Bluetooth Version	Version 4.0

※ Above operating time subject to change based upon connected devices or the surrounding environment.

07

### Using the Headset

#### 1. Power On / Off

##### Power On

- Place the power slide switch to 'OFF' ON
- The red + blue LED light flashes for 0.5 second and Power is turned on with voice guide.

##### Power Off

- Place the power slide switch to 'OFF' ON
- The red + blue LED light flashes for 0.5 second and Power is turned off with voice guide.

#### 2. Charging

##### LED indicator

- When the charger is connected, the Red LED is on.
- When charging is completed, the Blue LED is on.

※ When the charger is connected, the headset will be disconnected from the device.  
 ※ The power turns off when USB charger is disconnected.

08

### Recommendations

- Using USB Hub may take extra charging time due to the low current.
- For Fast charging, please use the 5V/500mA - 5V 1A rated charger.
- ※ It takes approximately 2 hours to have it fully charged when battery exhausted

#### 3. Battery Status Alarm & Alert

- Press Call and Play/Pause button at the same time for a second for audio guidance for the current battery level.
- "Battery Full"
- "Battery Half"
- "Battery not enough"

#### 4. Low Battery Alarm & Alert

- The red LED light flashes 3 times with voice guidance "Battery not enough" if the battery is less than 1 hour use.

#### 5. Critical Battery

- The notice continues every 2 minutes if the battery is less than 10 minutes use and power is turned off with voice guidance "Battery Empty" at the critical battery.

09

#### 6. Pairing

Before using the headset for the first time, you must pair it with a Bluetooth-enabled Device.

- Pairing: Connect between Bluetooth-enabled Device and Headset.

- Slide the power switch up to the 'OFF' ON
- After power on, the headset will automatically enter to pairing mode. (The red/blue LED light flashes).
- The headset will automatically enter to waiting mode if it is not connected for 3 minutes. (The power is automatically after 50 minutes with waiting mode)
- On the device you want to have paired, find the Bluetooth menu and search & select "PSB-100" from the list of devices.
- If connected without any problem, the headset will be paired with audio guide "Connected"
- Once pairing is complete, it will be paired automatically afterwards.

##### ※ Manual Pairing

- Hold Call button for 2 second while placing power slide switch to ON then it will enter to Pairing mode with voice guide "Start pairing".
- And Register the PSB-100 in above same way.
- If PIN code is required, please input "0000".

10

### Clearing Paired Device

- Hold call button for 1 second and Volume button while placing power slide switch to ON then paired device will be cleared with voice guide "Clear Paired List" and enter to Pairing Mode.

#### 7. Calling

##### Voice Dialing

- Briefly press Call button to activate Voice Dial.
- ※ To use Voice Dialing, your mobile phone must support Voice Dialing.

##### Last Number Dialing

- Press Call button for 1 second, the mobile phone will call the last number dialed.

#### 8. Call Answer / Call End / Call Reject

##### Call Answer/Call End

- Briefly press Call button to answer the incoming call.
- Briefly press Call button to end the call.

##### Call Reject

- Briefly press Call button to reject the incoming call.

11

#### 9. Transferring a Call

- During the call, press Call button for 3 second, audio will be transferred from headset to mobile phone.
- And press Call button for 3 second again, audio will be transferred from mobile phone to headset.

#### 10. Setting Waiting Mode while Calling

##### Setting Waiting mode

- During the call, briefly press Call button twice and enter to call waiting mode. Pressing Call button twice again back to the call mode.
- ※ To use Call waiting mode, the mobile phone must support 'Call waiting' service.

##### Incoming second call while calling

- Briefly press Call button to end the original call and answer the second call.
- Briefly press Call button twice to answer the second call without hanging up the original call (Original call will be call waiting mode)

##### Ending a Call

- Briefly press Call button.

12

##### Previous Track

- Press 'Previous Track' button to select previous song.

##### Next Track

- Press 'Next track' button to select next song.

##### Rewind

- Press and hold 'Previous Track' button.

##### Fast Forward

- Press and hold 'Next track' button.

#### 16. Using Croise.R Reader Application

You can use the additional functions through "Croise.R Reader" such as Manner mode, Volume Default Setting, Message Reading and so on.

- To use this application, you can search "Croise" or "Partron" in the Google Play Store to install.
- ※ Support Android Ver. 4.30

14

#### 11. Volume Control

##### Volume Up

- While calling or listening the music, briefly press Volume+ button.
- While calling or listening the music, press and hold Volume+ button for continuous volume up.

##### Volume Down

- While calling or listening the music, briefly press Volume- button.
- While calling or listening the music, press and hold Volume- button for continuous volume down.

##### Mute

- During the call, press Volume+, Volume- button at the same time for mute.
- Press Volume+, Volume- button at the same time again to cancel the mute.
- ※ User can hear the long beep at maximum and minimum volume.

#### 12. Music

##### To Play/Pause a Music

- To play a song or pause playback, press 'Play/Pause' button.

##### Music Stop

- Press 'Play / Pause' button for 1second.

13

#### 14. Multi-Connection

Multi-connection is useful to link more than a mobile device.

##### Pairing

- Proceed pairing of the first device manually.
- Power off the headset upon registration of the first device is completed.
- Power on holding the call button for pairing mode.
- Pairing 2nd device for registration.
- Connecting 1st device to the headset.

##### Calling

- Ring tone sounds when the second device has incoming call while you are talking through first device.
- You can operate the same as "Setting Waiting Mode while Calling".

##### Listening Music

- In multi-pairing mode, key control is available for the first played device.
- Press Play/Pause button briefly to stop playback from the first device.
- Then key control is available for 2nd Device.

15

#### 17. Button function and status information

Function	Action	Status
Power On	OFF ON	Red and Blue LED will be on simultaneously for 0.5 sec and out. <b>Power on</b>
Power Off	OFF ON	Red and Blue LED will be on simultaneously for 0.5 sec and out. <b>Power off</b>
Volume Up	Briefly press + + Press long for continuous volume up	8 levels of Volume
Volume Down	Briefly press - + Press long for continuous volume down	8 levels of Volume
Answer Call	Briefly press	8 levels of Volume
Reject Call	Press for 1 sec	Receiving a call
Call Cancel	Briefly press during the call	Dialing a call
Mute	Press simultaneously during the call	Blue LED light flashes slowly in every 5 sec
Transferring a call	Press for 3 seconds	Standby
Call Waiting	Press quickly twice during the call	Red LED light flashes once in every 3 sec
Voice Dial	Briefly press on standby status	Disconnection
		Blue LED light flashes

17

#### 17. Button function and status information

Function	Action	Status
Connection to Mobile Phone	Briefly press on connection standby status	
Last Number Redial	Press for 1 sec during standby status	
Pairing Mode	Press and simultaneously locate OFF ON	Red, Blue LED lights flash in turn <b>Connected</b> <b>Connected</b> <b>Disconnected</b> <b>Disconnected</b> <b>Link Loss</b> <b>Out of Range</b> <b>Pairing</b> <b>Start pairing</b> <b>Connection information delete</b> <b>Clear Paired List</b>
Battery Status check	Press and HI for 1sec simultaneously	Battery Status Notice <b>Danger</b> Red, Blue LED flash "Battery Empty." <b>Insufficient</b> Red LED flickers 3 times quickly "Battery not enough" <b>Normal</b> Red LED flickers 3 times quickly "Battery Half" <b>Sufficient</b> "Battery Full"

18

Function	Action	Status
Play / Pause	Briefly press	
Play / Pause	Press for 1 sec	
Play / Pause	Briefly press	
Play / Pause	Briefly press	
Play / Pause	Press and hold	
Play / Pause	Press and hold	
Play / Pause	Connect the cable for the recharge	Red LED is on
Play / Pause		Blue LED is on LED light flashes when charger cable is removed (Power off)

19

### Precautions

- Do not disassemble or modify. It may cause fire and disorder.
- Do not use or place the product at high or low temperature.
- Do not place the product near the high humidity, volatile, or flammables.
- Please be cautious not to shock on the product.
- It might give negative effect on the ear hearing if used for a long time in high volume.
- This bluetooth device might be damaged if either over 1A/1000mA of charger or the defective charger is used.
- In the case using car charger, the high output from truck may affect to the device.

Also please have the device disconnected from the cigar jack charger which may affect to the device when starting the car engine.

20

### Product Warranty and Service

- This device passed strict quality management and inspection process.
- Warranty period is 1 year.
- Even in the warranty period, you can be charged for the paid service if needed.
- Product dimension and outer appearance might be changed for the quality improvement without advance notice.
- This device cannot be used for the human rescue related service as it have the interference.

### Guide for the Paid Service

- After Product Warranty Period (1 year/6 months for the battery)
- User's negligence or any failure from improper disassemble, repair and modification.
- Failure caused by acts of God such as fire and flood.
- Failure using other options which is not provided from Partron.
- This Warranty does not cover product failures due to improper repair installations, modifications or service performed by a non-authorized person.
- Any Consumable parts.

21

### Product Warranty

- The warranty is valid only if the original receipt issued to the original purchaser by the dealer.
- If the product label is removed, physical change of the product or unapproved repair by the 3rd person, will invalidate of the warranty.
- The consumables, such as ear cap, battery and other accessories, which have limited life, will be excluded from the product warranty.
- This Warranty do not cover for the damage and accident by its use.
- This Warranty do not cover the lost and damage of the product on either transportation or delivery.

22

### FCC Compliance Information

This equipment has been tested and found to comply with the limits for a Class B digital device, pursuant to part 15 of the FCC Rules. These limits are designed to provide reasonable protection against harmful interference in a residential installation. This equipment generates, uses and can radiate radio frequency energy and, if not installed and used in accordance with the instructions, may cause harmful interference to radio communications. However, there is no guarantee that interference will not occur in a particular installation. If this equipment does cause harmful interference to radio or television reception, which can be determined by turning the equipment off and on, the user is encouraged to try to correct the interference by one or more of the following measures:

- Reorient or relocate the receiving antenna.
- Increase the separation between the equipment and receiver.
- Connect the equipment into an outlet on a circuit different from that to which the receiver is connected.
- Consult the dealer or an experienced radio/TV technician for help.

CAUTION: Changes or modifications not expressly approved by the party responsible for compliance could void the user's authority to operate the equipment.

THIS DEVICE COMPLIES WITH PART 15 OF THE FCC RULES. OPERATION IS SUBJECT TO THE FOLLOWING TWO CONDITIONS: (1) THIS DEVICE MAY NOT CAUSE HARMFUL INTERFERENCE, AND (2) THIS DEVICE MUST ACCEPT ANY INTERFERENCE RECEIVED, INCLUDING INTERFERENCE THAT MAY CAUSE UNDESIRABLE OPERATION.

23