



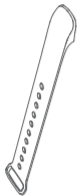
URBAN S

Bluetooth Smart Band
User Manual PWB-200

* For the detailed user manual of this product, please visit
www.croise.co.kr.



/ Component /



Band



Main Body

Button

Heart Rate
Sensor

Charging Terminal



Charging Cradle

/ Power and Operating Method/

Power

ON : When you press and hold the button of the band for more than 1 second, it powers on with the message saying 'Hello'

OFF : When you press and hold the button on the battery indication screen for more than 3 seconds, it powers off with the message saying 'Bye'.



< The power is on >


One Click : It moves on to the next information screen.

Twice Click : start or end the exercise mode of the band.

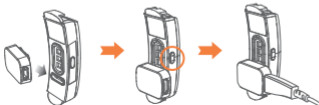
/ Charging the battery /

Charging the battery

Attach the cradle to the terminal on the back of the main body, and connect it with the portable 5-pin charging adapter. Because the charging terminal has magnetism on the front side, it is attached to the cradle located nearby.

(The button and the connecting part of the charging cradle are in the **same direction**. *Refer to  the drawing below.)

Please check if the battery is indicated on the screen. If it is not indicated, please try again by placing the cradle in the opposite direction.



* This product is designed to use approved AC/DC adapter that satisfied to LPS clause.

/ Downloading and Starting the App /

Downloading the App

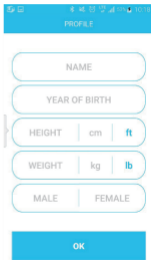
Install the URBAN S App on your smartphone. Please search the URBAN S on the Android Play Store or iOS App Store.

Reading Tutorial

When you select the checkbox 'Do not show again' after reading the tutorial pages, they do not appear anymore.

Signing Up for a Membership

Enter your name, date of birth, height, weight, gender, and press the OK button to complete the setting. (User information is to be provided based on the terms and conditions and the privacy policy.)



The screenshot shows a mobile app interface for profile setup. At the top, there is a blue header bar with the word "PROFILE" in white. Below the header, there are several input fields: "NAME", "YEAR OF BIRTH", "HEIGHT" (with sub-selects for "cm" and "ft"), "WEIGHT" (with sub-selects for "kg" and "lb"), and "MALE" (with sub-select for "FEMALE"). At the bottom, there is a large blue button labeled "OK". The background of the app is white with light blue accents.

/ Bluetooth Connection /

First, turn on the bluetooth of your cellphone and then turn on the power of the URBAN S.

If you press the band button 3 times consecutively, a unique 4-digit number appears. Then select the band which has the same last 4-digit number from the device list shown on the band connection screen of the URBAN S.

ex) When '6A9E' is indicated after pressing the band button three times, connect the product which has the indication of '6A:9E' for the last 4 digits on the upper band search screen.



URBAN-S (-65)
CE:FA:10:3F:F0:51
URBAN-S (-79)
04:32:F4:0B:64:6C
URBAN-S (-84)
0E:75:FF:6B:9B:FB

Please choose your device

/ Settings /

While clicking the icon  at the upper left hand corner of the home screen or the exercise screen, you can enter into the settings tab.

From the settings tab, you can select a unit of measurement data.

You can set up notifications from the band to suit your needs. You can also use the 'Show time when turning your wrist' function to enable automatic indication of time, use 'Heart Rate Measurement Frequency in Normal Mode' to control the cycle of measuring your heart rate at normal times, and use 'Frequency of Heart Rate Measurement During Exercise' to control the frequency of measuring your heart rate during exercise.

(Even if it is set to real time, the real time data is not stored into the graph.

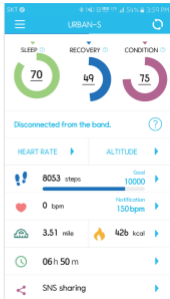
The graph is saved by the frequency of 3 minutes.)

On 'Items to Be Indicated on the Band Display During Exercise', you can set items to indicate on the band display while on exercise mode. (The exercise hours and the heart rate are indicated at all times regardless of the setting.)

/ URBAN Mode /

This automatically checks the sleep index, recovery, and condition every day. It stores the data such as the number of steps, the amount of activities like burned up calories, the heart rate, and the sleeping hours, and the data can be shared via SNS.

You can set up the goals of the number of steps and the heart rate, and you receive notifications when you achieve your goals. Also when you click (?) the icon button next to "The band is not connected", you can see the instructions on how to connect it. You can also check the detailed information by hourly, daily, weekly, and monthly by touching each item below the number of steps.



/ Real Time Measurement /

You can measure your heart rate and altitude any time.
Each measured value is stored as statistics up to a certain number of times.

* On the detailed measurement method, please refer to the detailed user manual.

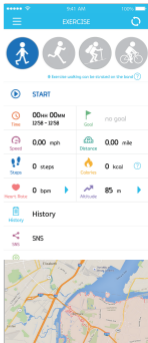


/ Exercise Mode /

This supports the modes of walking, running, climbing, and cycling, and you can set various goals for each mode.

During each mode of exercise, it traces the data such as the number of steps, the distance, the speed, the exercise hours, the heart rate, the altitude and aggregates them into statistics.

You can check your exercise route using the GPS of your smartphone, and share the exercise data via SNS. The past exercise records are also stored for your check and management.



/ Storage and Maintenance /

- Since the inner sensor the product is a sensitive part, please keep it always clean and protect it from damage for accurate measurement.
- Keep away from fire and avoid exposure to direct sunlight. Store the product in a place without dust or pollutant.
- Store the product in a place where there is no shock such as vibration.

/ Precautions for Safety /

1. Please do not disassemble or modify the main body. It may cause fire or breakdown.
2. Do not use or store the product at high or low temperatures.
3. Do not use or store the product in a place with much moisture, volatile materials or fire nearby.
4. When using car chargers for the product, up to the size of a regular passenger car is permitted. However, when used in a freight vehicle whose size exceeds 1 ton, the product can be damaged due to high output.
5. When using multiple apps at the same time, the App may be terminated automatically under the mobile operation system, in case of which the bluetooth connection may be disabled.

6. In case the band is contaminated with colored cosmetics (sun cream, BB cream, color cosmetics for women, etc.), clean it immediately using water tissues, etc. In case the pollution is neglected for a long time (for more than 30 minutes), the stain may not be removed, so it should be cleaned using a cleansing solution such as alcohol.

7. The URBAN S App obtains relevant information online in order to measure the altitude or the distance precisely. During the process, it may connect to 3G or 4G networks and data charges may apply.



8. When corrosion or perforation occurs in a product due to insufficient cleaning of the charging terminal, please note that it is not eligible for exchange or return.

9. The heart rate measurement function of the URBAN S should be used only for the purpose of physical training and health, and it should not be used to diagnose, treat, or prevent a disease or any other symptoms.

10. The URBAN S smart band supports water resistance to a certain degree, but does not guarantee perfect water resistance under special circumstances (swimming, underwater swimming, and diving). Also for a breakdown under such circumstances, the manufacturer and the sales company do not take any responsibility.

/ Product Warranty Guide /

Name	Croise URBAN S		
Date	day	month	Year
Place of Purchase			

Model Name	PWB - 200	
Warranty Period	Within 1 year from the purchase date (the warranty period of the battery is 6 months.)	
Battery Charger	INPUT DC 5.0V  0.11A (Li-ion Battery 80mAh)	
Symbol	 5031 Direct current	To indicate on the rating plate that the equipment is suitable for direct current only; to identify relevant terminals.
Caution	Risk of explosion if battery is replaced by an Incorrect type. Dispose of used batteries according to the instructions	

Notice on Use of Broadcasting Communication Equipment

This radio device is not allowed to provide services related to human safety as it may cause radio interference.

WARNING & SAFETY INFORMATION

Safety Symbols

Warning

- When encountering this symbol in the manual, you must follow these recommendations to avoid irreparable damage to your car, system or connected devices or to avoid accidents with injuries or death.

IC Information

This device complies with Industry Canada licence-exempt RSS standard(s). Operation is subject to the following two conditions:
(1) this device may not cause interference, and
(2) this device must accept any interference, including interference

Le présent appareil est conforme aux CNR d'Industrie Canada applicables aux appareils radio exempts de licence.

L'exploitation est autorisée aux deux conditions suivantes :

- (1) l'appareil ne doit pas produire de brouillage, et
- (2) l'utilisateur de l'appareil doit accepter tout brouillage radioélectrique subi, même si le brouillage est susceptible d'en compromettre le fonctionnement.

FCC Information

This device complies with part 15 of the FCC Rules. Operation is subject to the following two conditions:

1. This device may not cause harmful interference, and
2. This device must accept any interference received, including interference that may cause undesired operation.

FCC notification to users

This equipment has been tested and found to comply with the limits for a CLASS B digital device, pursuant to Part 15 of the FCC Rules. These limits are designed to provide reasonable protection against harmful interference when the equipment is operated in a commercial environment. This equipment generates, uses, and can radiate radio frequency energy and, if not installed and used in accordance with the instructions, may cause harmful interference to radio communications. However, there is no guarantee that interference will not occur in a particular installation. If this equipment does cause harmful interference, the user is encouraged to try to correct the interference by consulting with a dealer or an experienced technician for technical assistance.

Any changes or modifications to the equipment not expressly approved by the party responsible for compliance could void user's authority to operate the equipment.



Manufacturer : Partron Co., Ltd.

22, 2nd Road of Samsung-1-ro, Hwasung City,
Gyeonggi-do (Sukwoo-dong)

Customer Service: 031-201-7707

www.partron.co.kr
www.croise.co.kr

