



Electronic Emission Notices

Federal Communications Commission (FCC) Statement

This equipment has been tested and found to comply with the limits for a Class B digital device, pursuant to Part 15 of FCC Rules. These limits are designed to provide reasonable protection against harmful interference in a residential installation. This equipment generates, uses and can radiate radio frequency energy and, if not installed and used in accordance with instructions contained in this manual, may cause harmful interference to radio and television communications. However, there is no guarantee that interference will not occur in a particular installation.

If this equipment does cause harmful interference to radio or television reception, which can be determined by turning the equipment off and on, the user is encouraged to try to correct the interference by one or more of the following measures:

- REORIENT OR RELOCATE THE RECEIVING ANTENNA
- INCREASE THE SEPARATION BETWEEN THE EQUIPMENT AND THE RECEIVER
- CONNECT THE EQUIPMENT INTO AN OUTLET ON A CIRCUIT DIFFERENT FROM THAT OF THE RECEIVER
- CONSULT THE DEALER OR AN EXPERIENCED AUDIO/TELEVISION TECHNICIAN

This device complies with part 15 of the FCC Rules. Operation is subject to the following two conditions: (1) This device may not cause harmful interference, and (2) this device must accept any interference received, including interference that may cause undesired operation.

NOTE:

Connecting this device to peripheral devices that do not comply with Class B requirements, or using an unshielded peripheral data cable, could also result in harmful interference to radio or television reception.

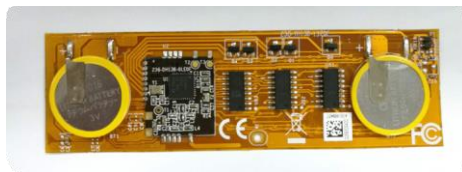
The user is cautioned that any changes or modifications not expressly approved by the party responsible for compliance could void the user's authority to operate this equipment.

To ensure that the use of this product does not contribute to interference, it is necessary to use shielded I/O cables.

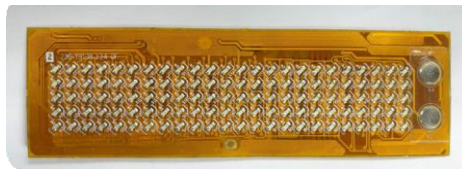
Table of Contents

Top view	3
Bottom view	3
Antenna	4
Button function	4
App control	5

Top view

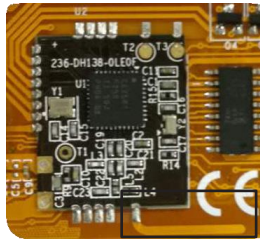


Bottom view



Note: Use this product in environments with ambient temperatures between 0°C and 40°C.

Antenna



Button function



S3 (ON/OFF button): Start and shut off the LED display.

S2 (Message Loop button): Click this button to change the message.

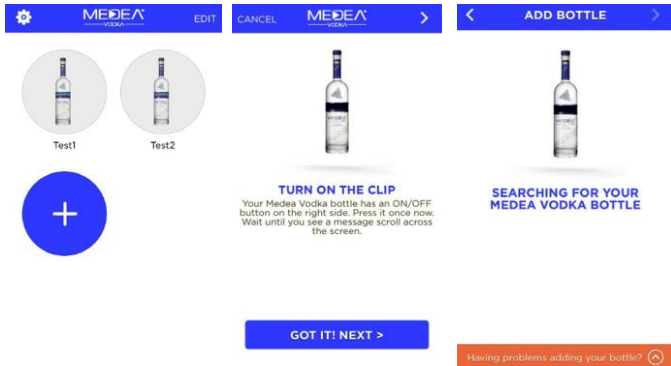
S2+S3 (Reset): Click both buttons about 5 seconds in the same time to reset.

App Control

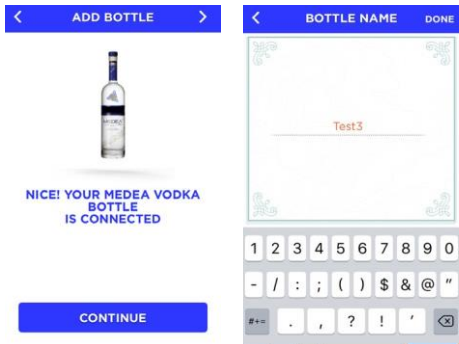
1. Download the App: Medea Vodka from APP Store and install it.



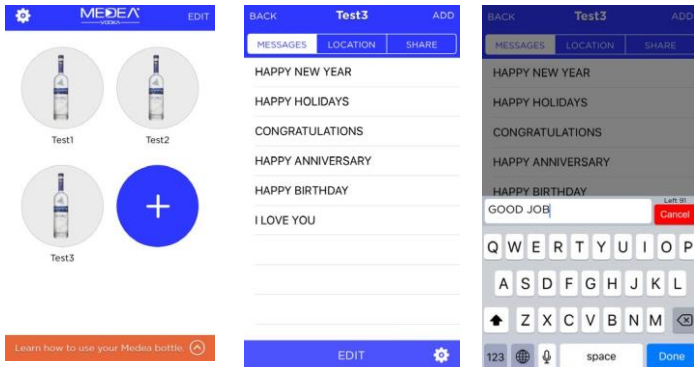
2. Open Medea Vodka and enable the bluetooth, click "+" to add device.



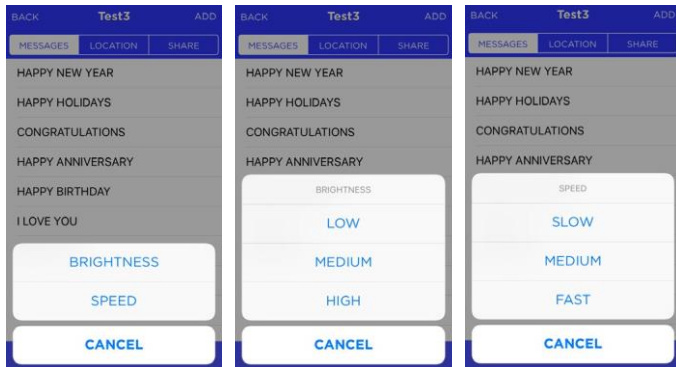
3. Click CONTINUE and input the device name.



4. Select the correct device name and open it. Edit the message.



5. Adjust the Brightness and Speed to change the display mode.



6. The message LED displays.

