
ZOTAC ZBOX pico User's Manual



No part of this manual, including the products and software described in it, may be reproduced, transmitted, transcribed, stored in a retrieval system, or translated into any language in any form or by any means, except by the purchaser for backup purposes, without the express written permission of ZOTAC.

Products and corporate names mentioned in this manual may be registered trademarks or copyrights of their respective companies, and are used for identification purposes only. All trademarks are the property of their respective owners.

Every effort has been made to ensure the contents of this manual are correct and up to date. However, the manufacturer makes no guarantee regarding the accuracy of its contents, and reserves the right to make changes without prior notice.

Table of Contents

Product specifications	3
Safety information	4
Setting up your system	4
Care during use	4
Welcome	5
Package contents	5
Port Layout	6
How to disable the ring LED indicator	8
Mounting the ZOTAC ZBOX pico to an LCD monitor	10
Getting started with Windows 8.1 with Bing	12
Using your ZOTAC ZBOX pico	16
Configuring a wireless connection	16
Configuring an Ethernet connection	16
Using a static IP	16
Using a dynamic IP (PPPoE connection)	17
Configuring audio output via an HDMI device	18
Configuring Windows 8.1 micro SD/SDHC/SDXC Support	19
Recovering Windows 8.1 (from internal system image)	21
Recovering Windows 8.1 (from external recovery DVD)	22

Product specifications (ZBOX-PI320)

Product Dimensions

- 115.5mm x 66mm x 19.2mm

Processor

- Intel Atom Z3735F (quad-core, 1.33 GHz)
- Burst speed up to 1.83 GHz

Graphics processor

- Intel HD graphics

Memory

- 2GB DDR3L-1333 memory

USB ports

- Three USB 2.0 ports

Storage

- 32GB/64GB eMMC
- Expandable via micro SD/SDHC/SDXC

Networking

- 10/100Mbps Ethernet

Wireless networking

- 802.11n Wi-Fi
- Bluetooth 4.0

Operating System

- Windows 8.1 with Bing, 32-bit

Safety information

Your ZOTAC ZBOX pico is designed and tested to meet the latest standards of safety for information technology equipment. However, to ensure your safety, it is important that you read the following safety instructions.

Setting up your system

- ❖ Read and follow all instructions in the documentation before you operate your system.
- ❖ Do not use this product near water or a heat source such as a radiator.
- ❖ Set up the system on a stable surface with the provided stand. Never use the system alone without the stand.
- ❖ Openings on the chassis are for ventilation. Do not block or cover these openings. Make sure you leave plenty of space around the system for ventilation. Never insert objects of any kind into the ventilation openings.
- ❖ Use this product in environments with ambient temperatures between 0°C and 35°C.

Care during use

- ❖ Do not walk on the power cord or allow anything to rest on it.
- ❖ Do not spill water or any other liquids on your system.
- ❖ When the system is turned off, a small amount of electrical current still flows. Always unplug all power, modem, and network cables from the power outlets before cleaning the system.
- ❖ If you encounter the following technical problems with the product, unplug the power cord and contact a qualified service technician or your retailer.
 - The power cord or plug is damaged.
 - Liquid has been spilled into the system.
 - The system does not function properly even if you follow the operating instructions.
 - The system was dropped or the cabinet is damaged.
 - The system performance changes.

Welcome

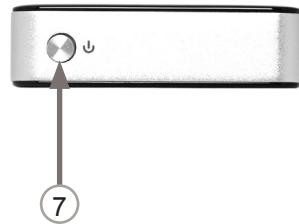
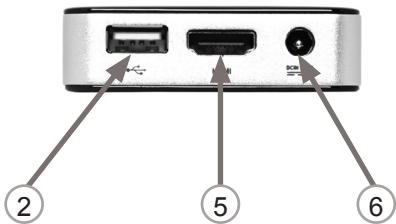
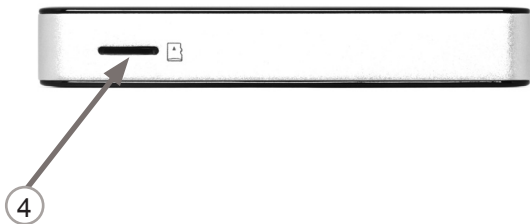
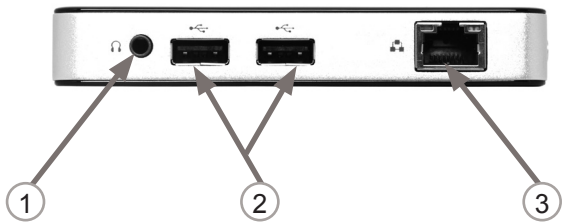
Congratulations on your purchase of the ZOTAC ZBOX pico. The following illustration displays the package contents of your new ZOTAC ZBOX pico. Please contact your retailer if any of the below items are damaged or missed.

Package contents

- 1 x ZOTAC ZBOX pico
- 1 x Mounting bracket
- 2 x Mount screws
- 1 x AC adapter
- 1 x OS Recovery DVD (optional)
- 1 x Warranty Card
- 1 x User Manual
- 1 x Quick Start Guide



Port Layout



Power button

1. Headphone/analog audio output (3.5mm)

The stereo headphone jack (3.5mm) is used to connect the system's audio out signal to amplified speakers or headphones.

2. USB 2.0 ports

The USB (Universal Serial Bus) port is compatible with USB devices such as keyboards, mice, cameras and external hard disk drives.

3. Ethernet port

The eight-pin RJ-45 LAN port supports standard Ethernet cable for connection to a local network.

4. MicroSD memory card slot

The built-in memory card reader supports Micro SD/SDHC/SDXC cards to expand the storage capabilities of the ZOTAC ZBOX pico.

5. HDMI output

The HDMI (High Definition Multimedia Interface) output supports a Full HD 1080p displays such as an HDTV or monitor.

6. Power input (DC 5V, 3A)

The supplied power adapter converts AC power to DC power for use with this jack. Power supplied through this jack supplies power to the mini-PC. To prevent damage to the mini-PC, always use the supplied power adapter.

7. Power button

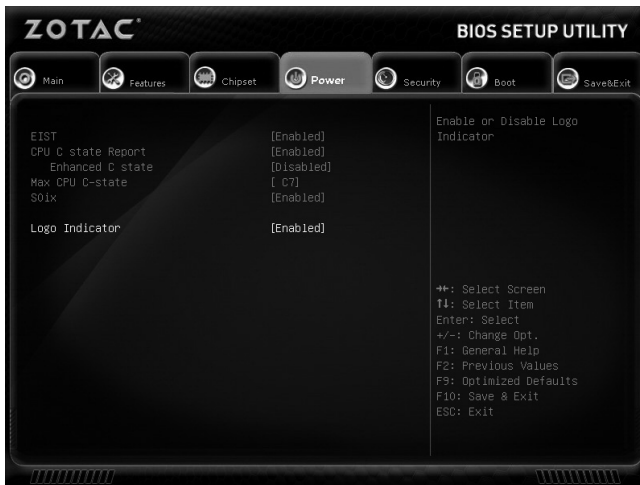
The power button turns the system ON and OFF.

Note 1: The power adapter may get warm or hot when in use. Do not cover the adapter and keep it away from your body.

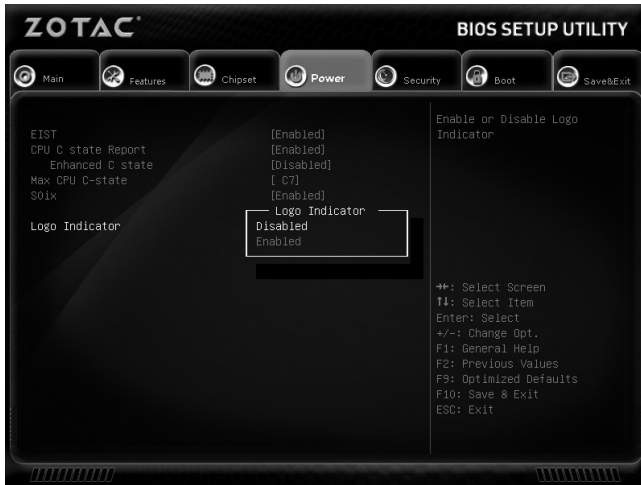
Note 2: Due to the unique design, some connectors are placed upside down.

How to disable the ring LED indicator

1. Turn on the ZBOX pico mini-PC, then press <Delete> to enter the BIOS SETUP UTILITY.
2. Use the arrow keys to navigate to the **Power** menu and select **Logo Indicator**.



3. Press <Enter> and select **Disabled**.



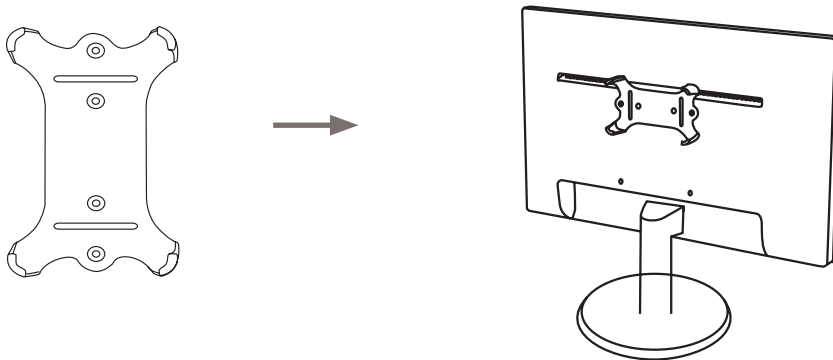
4. Press F10 to save the configuration and exit. The PC will reboot.

Mounting the ZOTAC ZBOX pico to an LCD monitor

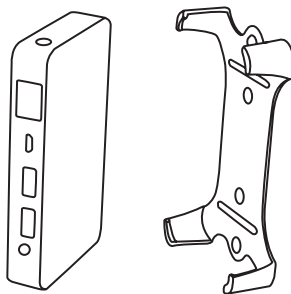
You can attach the ZOTAC ZBOX pico to the back of a VESA75/100 compliant display.

1. Secure the mounting bracket to the LCD monitor using 2 screws.

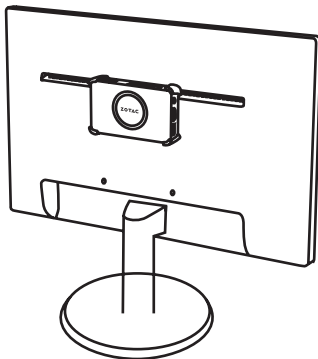
Disclaimer: ZOTAC is not liable for damages resulting from an improper installation.



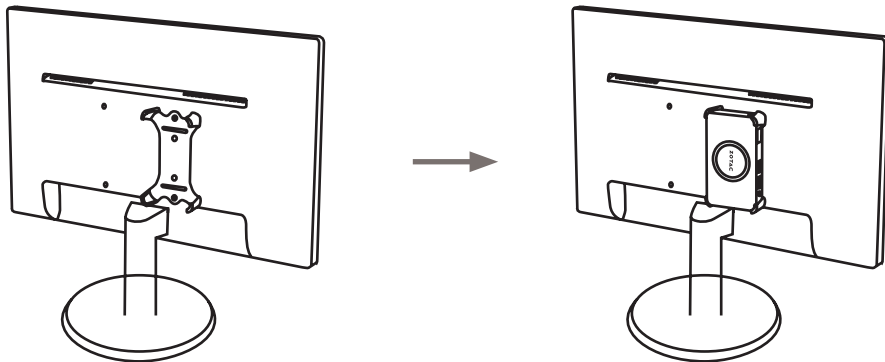
2. Attach the ZOTAC ZBOX pico to the VESA mount and gently press down to secure the ZBOX to the mount.



-
3. Connect the ZOTAC ZBOX pico to the LCD monitor with an HDMI cable.



Note: You can also mount the ZOTAC ZBOX pico vertically as shown in the picture below.



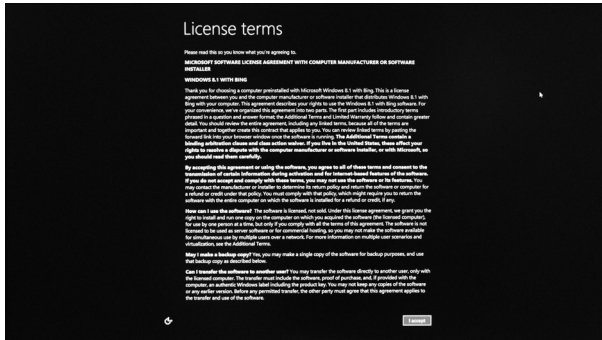
Getting started with Windows 8.1 with Bing

Please follow the steps below to begin using your ZBOX with Windows 8.1 with Bing.

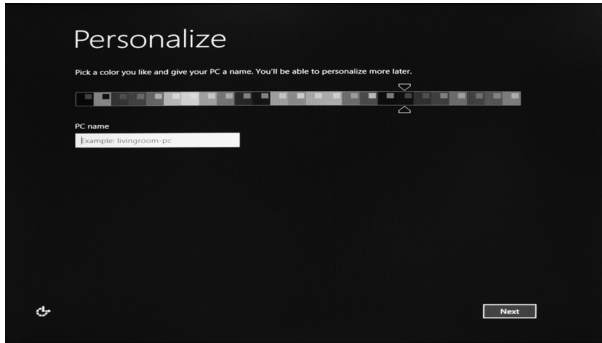
1. Power on the system.
2. Connect to the Internet via Ethernet or Wi-Fi.
3. Select the Region and language.



4. Read and agree to the license terms.



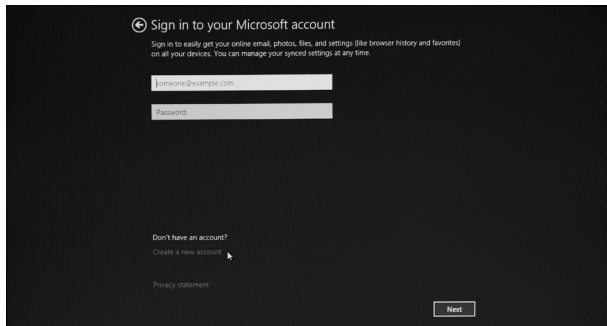
5. Pick a color you like and give the PC a name.



6. We recommend using the express settings.



-
7. Create a Microsoft new account if you don't have one or select "Sign in without a Microsoft account" and click "next".

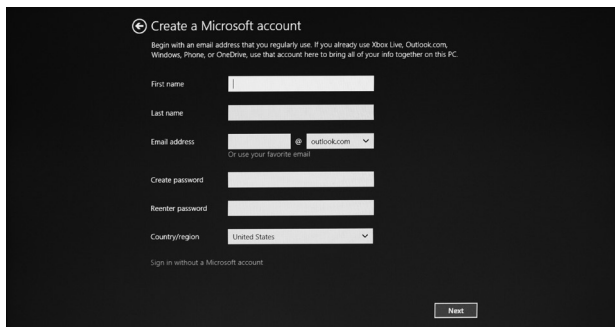


← Sign in to your Microsoft account

Sign in to easily get your online email, photos, files, and settings (like browser history and favorites) on all your devices. You can manage your syncd settings at any time.

Don't have an account?
[Create a new account](#)

[Privacy statement](#)



← Create a Microsoft account

Begin with an email address that you regularly use. If you already use Xbox Live, Outlook.com, Windows, Phone, or OneDrive, use that account here to bring all of your info together on this PC.

First name

Last name

Email address @ outlook.com
Or use your favorite email

Create password

Reenter password

Country/region

[Sign in without a Microsoft account](#)

8. Setup your account.

← Your account


If you want a password, choose something that will be easy for you to remember but hard for others to guess.

User name

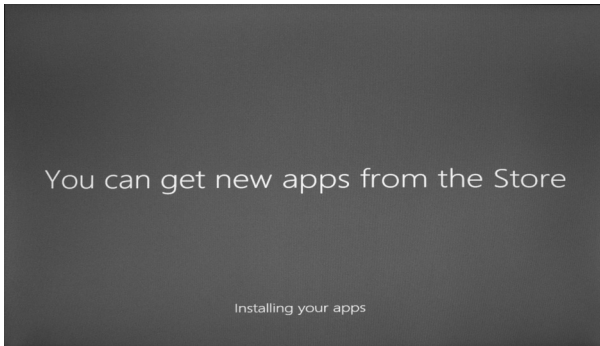
Password

Reenter password

Password hint



9. Wait for the initial system setup to complete .



Using your ZOTAC ZBOX pico

Configuring a wireless connection

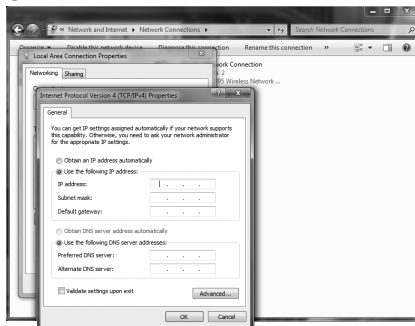
Please follow the instructions below to connect to a wireless network:

1. Double-click the wireless network icon (pic) in the notification area.
2. Select the wireless network you want to connect to from the list and click Connect.
3. After connection is established, you will see “Connected.”
Note 1: For security concerns, Do NOT connect to an unsecured network, otherwise, the transmitted information without encryption might be visible to others.
Note 2: Enter the network security key if necessary.



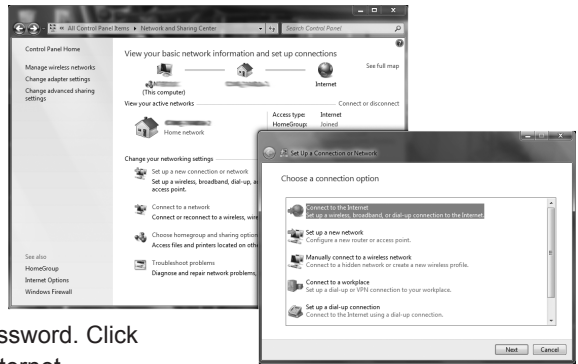
Configuring an Ethernet connection Using a static IP

1. Right-click the network icon in the notification area and select “Open Network Connections”.
2. Right-click “Local Area Connection” and select “Properties”.
3. Highlight “Internet Protocol (TCP/IP)” and click “Properties”.
4. Select “Use the following IP address”.
5. Enter your IP address, subnet mask and Default gateway.
6. Enter the preferred DNS server address if necessary.
7. After entering all of the related values, click “OK” to finish the configuration.



Using a dynamic IP (PPPoE connection)

1. Repeat Step 1-3 in the previous section.
2. Select “Obtain an IP address automatically” and click “OK”.
3. Click “Create a new connection” to start the NEW Connection Wizard.
4. Click “Next”.
5. Select “Connect to the Internet” and click “Next”.
6. Select “Set up my connection manually”.
7. Select your connection type and click “Next”.
8. Enter your ISP Name and click “Next”.
9. Enter your User name and Password. Click “Next”.
10. Click “Finish” to finish the configuration.
11. Enter your user name and password. Click “Connect” to connect to the internet.

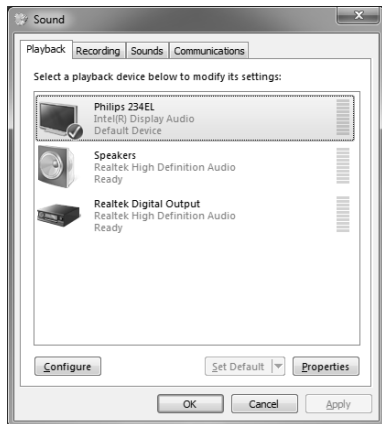


Note: Contact your internet Service Provider (ISP) if you have problems connecting to the network.

Configuring audio output via an HDMI device

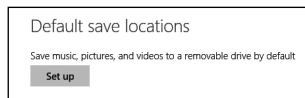
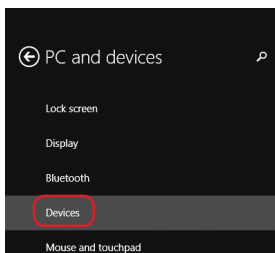
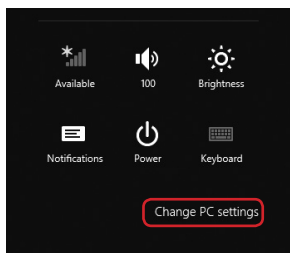
Follow the steps below to enable audio output via HDMI when connecting the ZOTAC ZBOX pico to a TV or receiver via HDMI.

1. Access the Sound settings via the system Control Panel.
2. Under Playback devices, click the display device that corresponds with your HDMI audio compatible display
3. Click the “Set Default” button in the lower right hand corner.
4. Click “OK” to exit the setup.

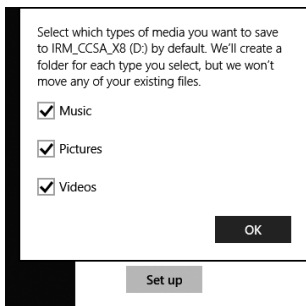


Configuring Windows 8.1 micro SD/SDHC/SDXC Support

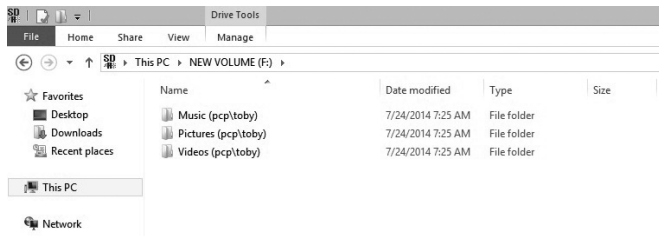
1. Press WINKEY+I, to reveal interface **Settings**.
2. Select “Change PC settings” > “PC and devices” > “Devices”, you will see a group named “Default Save Locations”.



3. Click “Set Up,” now you can configure Windows to use the micro-SD card for music, photos, and videos.

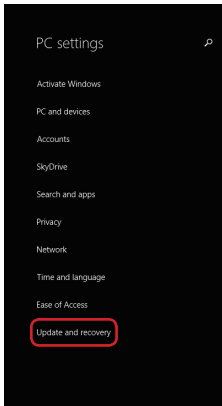


-
4. The Music, Pictures, and Videos folders on the SD card are associated to individual user accounts.

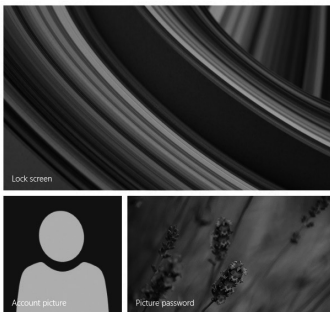


Recovering Windows 8.1 (from internal system image)

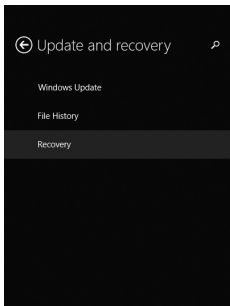
1. Select “PC settings” > “Update and recovery” > “Recovery” > “Restart now”.



Personalize



View recently used settings



Refresh your PC without affecting your files

If your PC isn't running well, you can refresh it without losing your photos, music, videos, and other personal files.

[Get started](#)

Remove everything and reinstall Windows

If you want to recycle your PC or start over completely, you can reset it to its factory settings.

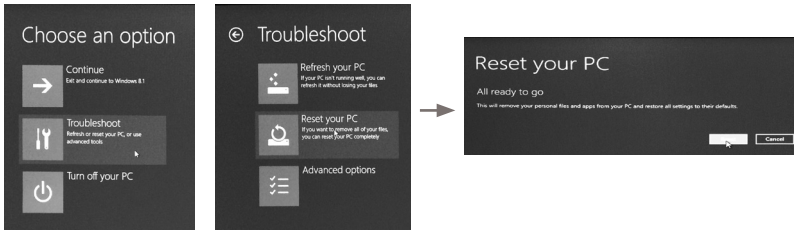
[Get started](#)

Advanced startup

Start up from a device or disc (such as a USB drive or DVD), change Windows startup settings, or restore Windows from a system image. This will restart your PC.

[Restart now](#)

2. Choose “Troubleshoot” > “Reset your PC” > “Reset”.



Recovering Windows 8.1 (from external recovery DVD)

1. Please back up your personal files before attempting recovery.
2. Boot from recovery DVD.
3. Follow the on-screen instructions to finish the recovery.

FCC Statement:

This device complies with part 15 of the FCC Rules. Operation is subject to the following two conditions: (1) This device may not cause harmful interference, and (2) this device must accept any interference received, including interference that may cause undesired operation.

This equipment has been tested and found to comply with the limits for a Class B digital device, pursuant to part 15 of the FCC Rules. These limits are designed to provide reasonable protection against harmful interference in a residential installation. This equipment generates, uses and can radiate radio frequency energy and, if not installed and used in accordance with the instructions, may cause harmful interference to radio communications. However, there is no guarantee that interference will not occur in a particular installation. If this equipment does cause harmful interference to radio or television reception, which can be determined by turning the equipment off and on, the user is encouraged to try to correct the interference by one or more of the following measures:

- Reorient or relocate the receiving antenna.
- Increase the separation between the equipment and receiver.
- Connect the equipment into an outlet on a circuit different from that to which the receiver is connected.
- Consult the dealer or an experienced radio/TV technician for help.

Caution: Any changes or modifications not expressly approved by the party responsible for compliance could void the user's authority to operate the equipment.

IC Statement

This device complies with Industry Canada licence-exempt RSS standard(s).
Operation is subject to the following two conditions:

(1) this device may not cause harmful interference, and (2) this device must accept any interference, including interference that may cause undesired operation of the device.

Le présent appareil est conforme aux CNR d'Industrie Canada applicables aux appareils radio exempts de licence. L'exploitation est autorisée aux deux conditions suivantes :

(1) l'appareil ne doit pas produire de brouillage, et (2) l'utilisateur de l'appareil doit accepter tout brouillage radioélectrique subi, même si le brouillage est susceptible d'en compromettre le fonctionnement.