

QUICK START GUIDE


LG-US375

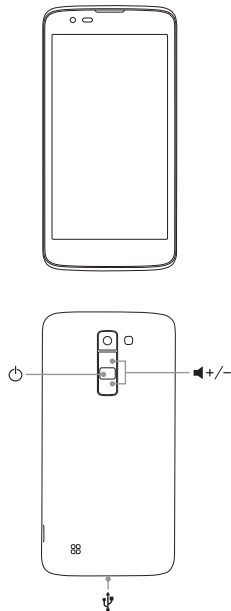


MBM65456201 (1.0)

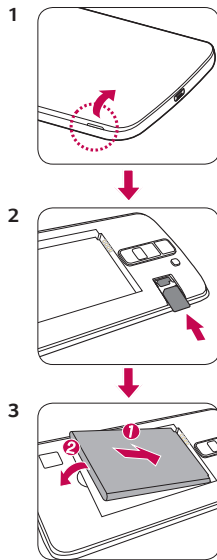
U.S. Cellular®
Customer Care:
1-888-944-9400

Device layout

To turn on the device, press and hold the  for a few seconds.



Installing the Nano SIM card and battery



NOTE

- Only Nano SIM cards work with this device.

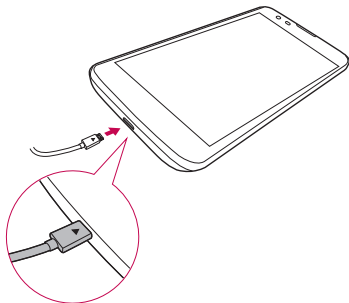
All materials in this QSG including, without limitation, the design, the text, and any marks are the property of LG Electronics USA, Inc. Copyright © 2016 LG Electronics USA, Inc. ALL RIGHTS RESERVED. LG, LG Life's Good and the LG logo are registered trademarks of LG Corp. Google and Android are trademarks of Google Inc. Bluetooth® is a registered trademark of Bluetooth SIG, Inc. worldwide. Wi-Fi® and the Wi-Fi logo are registered trademarks of the Wi-Fi Alliance. All other trademarks and copyrights are the property of their respective owners. Unless otherwise specified herein, all accessories referenced herein are sold separately. All features, functionality, and other product specifications are subject to change.

Visit www.uscellular.com to view the user guide and more information.

Some content and illustrations may differ from your device depending on the region, service provider, software version, or OS version, and are subject to change without prior notice.



Charging the phone



- The Charger/USB port is at the bottom of the phone.
- To maximize battery life, make sure that the battery is fully charged before you use it the first time.

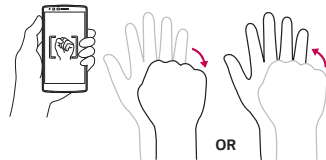
Gesture Shot

The Gesture shot feature allows you to take a picture with a hand gesture using the front camera.

Use Gesture Shot

There are two methods for using the Gesture shot feature.

- Raise your hand, with an open palm, until the front camera detects it and a box appears on the screen. Then close your hand into a fist to start the timer, allowing you time to get ready.
- Raise your hand, in a clenched fist, until the front camera detects it and a box appears on the screen. Then unclench your fist to start the timer, allowing you time to get ready.



TIP! Interval shot

- If you make a fist twice or touch and hold  the camera takes four consecutive photos at a time.