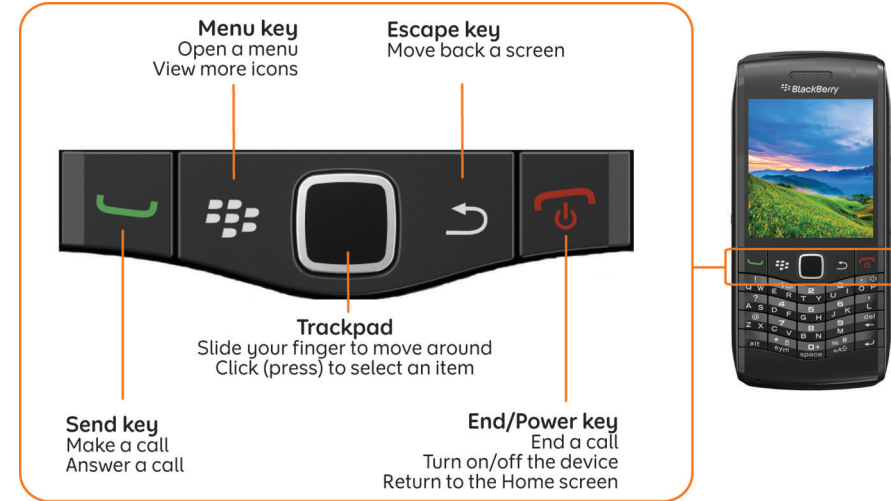


Welcome to BlackBerry!

Get to know your new BlackBerry® Pearl™ smartphone.



Explore the keys



©2010 Research In Motion Limited. All rights reserved. BlackBerry®, RIM®, Research In Motion®, SureType®, SurePress(TM) and related trademarks, names and logos are the property of Research In Motion Limited and are registered and/or used in the U.S. and countries around the world. Mac is a trademark of Apple Inc. Bluetooth is a trademark of Bluetooth SIG. Hotmail, Windows Live, and Windows Mobile are trademarks of Microsoft Corporation. Palm is a trademark of Palm Trademark Holding Company, LLC. Wi-Fi and Wi-Fi Protected Setup are trademarks of the Wi-Fi Alliance. All other trademarks are the property of their respective owners. This documentation is provided "as is" and without condition, endorsement, guarantee, representation or warranty, or liability of any kind by Research In Motion Limited and its affiliated companies, all of which are expressly disclaimed to the maximum extent permitted by applicable law in your jurisdiction.

MAT-30804-001 | PRINTSPEC-089 | SWD -1015817-0331091028-001 | RCV71UW/RX71UW

Safety information

IT IS IMPORTANT THAT YOU READ THE SAFETY AND PRODUCT INFORMATION BOOKLET (INCLUDED) PRIOR TO USING YOUR BLACKBERRY DEVICE. It contains essential safety information related to your device.

More getting started information

For more getting started information, visit www.blackberry.com/gettingstarted.

1

Insert the SIM card and battery

Depending on your BlackBerry® device model or your wireless service provider, you might not need to insert a SIM card to use your device.



If your device does not turn on automatically, charge the battery.


2

Charge the battery



 full battery power

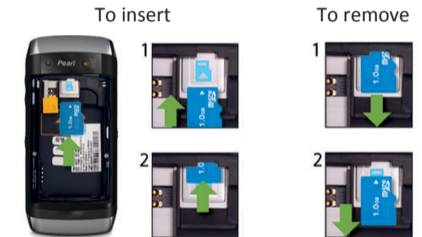
 battery charging

 low battery power

3

Insert a media card

You can use a media card to store more media files. A media card might already be inserted in your BlackBerry® device.



4

Use the setup wizard

The setup wizard can help you get started quickly.

- Set up email addresses
- Learn about navigation and typing
- Personalize your device
- Set up wireless and Bluetooth® connections

If the setup wizard does not appear automatically, on the Home screen or in the **Setup** folder, click the **Setup Wizard** icon.

Set up your email

- On the Home screen or in the **Setup** folder, click the **Setup Wizard** icon.
- On the **Email Setup** screen, select one of the following options:
 - I want to create or add an email address:** This option is most common for individual users. Use this option to associate your BlackBerry® device with one or more existing email accounts (for example, Windows Live™ Hotmail®), to create a new email address for your device, or to use a social networking application. If this option does not appear, contact your wireless service provider.
 - I want to use a work email account with a BlackBerry Enterprise Server:** This option is most common for corporate users. If your administrator gave you an enterprise activation password, use this option to associate your device with your work email account using the BlackBerry® Enterprise Server.
- Click **Next**, and complete the instructions on the screen.

Note: When your email address is set up correctly, you receive a confirmation message. To see your email messages, on the Home screen, click the **Messages** icon.

I cannot set up an email address

- In the **Setup** folder, click the **Setup Wizard** icon. On the **Email Setup** screen, verify that your email address information is correct. To view your password, select the **Show Password** check box.
- Verify with your wireless service provider that your email account type is supported.
- Verify that you have switched devices correctly.

For information about setting up an email address, visit www.blackberry.com/go/docs and click **BlackBerry Internet Service**.

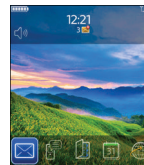
Switch devices

If you are switching from a BlackBerry® device that is associated with an existing email address (for example, Windows Live™ Hotmail®) to a new BlackBerry device, do the following:

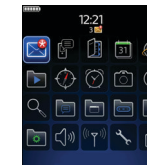
- On your computer, open the BlackBerry® Desktop Manager. Use the Device Switch Wizard to transfer data from your previous device to your new device.
- On your new device, on the Home screen or in the **Setup** folder, open the email setup application and follow the prompts. If you do not receive the prompts or if you decline any of the prompts, email messages will not be sent to your new device until you switch devices manually. If you are selling or buying a previously owned BlackBerry device that operates on CDMA networks, contact your wireless service provider to switch devices.
- Delete the data from your previous device by doing a security wipe. For more information, see the user guide for your device.

You can also import data from your previous Palm® device or Windows Mobile® powered device to your new BlackBerry device using the BlackBerry Desktop Manager.

View applications



Home screen




More icons on the Home screen

View more icons on the Home screen

Press the **Menu**  key

Switch between applications

Press and hold the **Menu**  key, then click an application icon

Applications

Get started with some of these great applications.



Messages

Send your messages.



Contacts

Add new contacts.



Browser

Visit web pages.



Media

View saved pictures, play songs, and more.



Camera (if supported)

Take a picture.



Instant Messaging

Chat with friends or colleagues.



Downloads

Find downloaded applications here or in other folders, such as **Games**.



Options

Set your device options. You can find more options in each application menu.



Manage Connections

Set up wireless connections, such as a Bluetooth® connection.



Help

Find answers here or click **Help** in a menu.

Status indicators

Home screen



alarm set



missed call count



unopened message count



sending data



calendar reminder count



receiving data



voice mail message



roaming



new notification

Messages



unopened message



SMS text message



opened message



sent message



message with an attachment



message is sending



message is high priority



message not sent



MMS message



draft message

Phone



missed call



received call



placed call

Quick tips

It's easy to type using SureType® technology. Start typing without looking at the screen or making corrections. You only need to press each letter key once to get the letter you want. Try it now!

To select a different word from the list, click the trackpad.

Typing

Insert a period Press the **space** key twice

Capitalize a letter

Hold the letter key until the capitalized letter appears or press the **aa** key and the letter key

Type a number or the alternate character on a key

Press the **alt** key and the number key or character key (for example, to type the number one (1), press the **alt** key and **ER**)

Type a symbol

Press the **sym** key

Messages

Move to the top of a message list

Press the **ER** key

Phone

Adjust the volume

Press the **Volume** keys on the right side of your BlackBerry® device

Pictures



Zoom in to or out of a picture

Click the trackpad

For more tips, see the user guide for your device.

Important: When you use your device, take frequent breaks. If you experience discomfort in any part of your body, stop using your device immediately. If the discomfort persists, consult a physician.




Send an email message

1. On the Home screen, click the **Messages** icon.
2. Press the  key > **Compose Email**.
3. In the **To** field, type an email address.
4. Type a message.
5. Press the  key > **Send**.


BlackBerry Messenger

BlackBerry® Messenger helps you stay connected with friends or colleagues who have a BlackBerry device. Keep in touch by sending instant messages, updating your status, and more.

Change your ring tone

1. From the Home screen, press the  key.
2. Press the  key > **Set Ring Tone**.
3. In the **Ring Tone** field, click a preloaded ring tone, or click **Select Music** at the top of the list.
4. Press the  key > **Save**.

Download a ring tone

1. On the Home screen, click the **Media** icon > **Ring Tones** icon.
2. Press the  key > **Download Ring Tones**.

Additional data charges might apply. For information, contact your wireless service provider. If this feature is not available, you can download ring tones from other web sites.



Pair with a Bluetooth enabled device

You must pair your BlackBerry® device with the Bluetooth® enabled device before you can connect to it. For information about preparing a Bluetooth enabled device for pairing, see the documentation for that device.

1. On the Home screen, click the **Manage Connections** icon.
2. Click **Set Up Bluetooth > Search**.
3. Click a Bluetooth enabled device.
4. If necessary, do one of the following:
 - If the Bluetooth enabled device does not have a keyboard, such as a headset, on your BlackBerry device, type the pairing passkey that is in the documentation that came with the Bluetooth enabled device.
 - If the Bluetooth enabled device has a keyboard, such as a laptop, type a pairing passkey of your own choosing on both devices.

Visit a web page

Depending on your wireless service provider, multiple browsers might appear on your BlackBerry® device. For information about the charges associated with using each browser, contact your wireless service provider.

1. On the Home screen, click the **Browser** icon.
 - If a web address field appears on the screen, type a web address.
 - If a web address field does not appear on the screen, press the  key > **Go To**. Type a web address.
2. Press the  key.

Take a picture

1. On the Home screen, click the **Camera** icon.
2. To zoom in to or out from a subject, slide your finger up or down on the trackpad.
3. Click the trackpad.




Record a video

1. On the Home screen, click the **Media** icon > **Video Camera** icon.
2. Click the trackpad.
3. To pause recording, click the trackpad again.

Connect to a Wi-Fi network


1. On the Home screen, click the **Manage Connections** icon.
2. Click **Set Up Wi-Fi Network**.
3. Do one of the following:
 - Click **Scan for Networks**. Click a network.
 - Click **Manually Add Network**. Type the network name. Click **Add**.
 - If you are using a wireless access point or router that is enabled with Wi-Fi Protected Setup™, click **Push Button Setup**.
4. Complete the instructions on the screen.
5. Click **Finish**.

Change your wallpaper

1. From the Home screen, press the  key.
2. Click **Options > Wallpaper**.
 - To take a picture, click **Camera**. Click the camera icon.
 - To select a picture that you took, click the picture.
 - To select a preloaded picture, click **Preloaded Pictures**. Click a picture.
3. Press the  key > **Set As Wallpaper**.
4. Press the  key twice to return to the Home screen.

Download applications and themes

You can download applications, themes, and ring tones from your wireless service provider's web site (if available) or from the BlackBerry App World™ storefront. To download a theme, do the following:

1. On the Home screen or in a folder, click the **Options** icon.
2. Click **Theme**.
3. Press the  key > **Download Themes**.

Your wireless service provider must support this feature. Additional data charges might apply. For information, contact your wireless service provider.

BlackBerry Desktop Software

You can use the BlackBerry® Desktop Software to back up and restore BlackBerry device data and synchronize calendar appointments, music, pictures, and more between your device and computer.



To download the BlackBerry Desktop Software, visit www.blackberry.com/desktopsoftware.

Synchronize your media files

1. Connect your BlackBerry® device to your computer.
2. On your computer, open the BlackBerry® Desktop Manager.
 - If you are using a Windows® computer, click **Media**.
 - If you are using a Mac computer, in the **Media** section in the left pane, click **Music**. Mac users can synchronize only music.

For more information, see the help in the BlackBerry Desktop Manager.

Get help

- www.blackberry.com/gettingstarted: Find getting started information.
- **Your wireless service provider web site**: Find information about your wireless network or wireless service plan.
- www.blackberry.com/go/declarationofconformity: View the Declaration of Conformity made under Directive 1999/5/EC (HG nr.88/2003).

CAUTION: Use only those accessories approved by Research In Motion. Using any accessories not approved by RIM for use with this particular device model might invalidate any approval or warranty applicable to the device, might result in the non-operation of the device, and might be dangerous.