

OUTSIDE

Warm-up Your Headphones
Optional: Burn-in your audio equipment with the JLab Audio App or access the burn-in method at: jlabaudio.com/burnin



JLab Audio + Burn-in Tool



3 MONTHS pandora™ FREE
With purchase. Visit jlabaudio.com/pandoraoffer

US Compliance

FCC Information

This equipment has been tested and found to comply with the limits for a Class B digital device, pursuant to Part 15 of the FCC Rules. These limits are designed to provide reasonable protection against harmful interference in a residential installation. This equipment generates, uses and can radiate radio frequency energy and, if not installed and used in accordance with the instructions, may cause harmful interference to radio communications. However, there is no guarantee that interference will not occur in a particular installation. If this equipment does cause harmful interference to radio or television reception, which can be determined by turning the equipment off and on, the user is encouraged to try to correct the interference by one or more of the following measures:

- Reorient or relocate the receiving antenna.
- Increase the separation between the equipment and receiver.
- Connect the equipment into an outlet on a circuit different from that to which the receiver is connected.
- Consult the dealer or an experienced radio/TV technician for help.

If you cannot eliminate the interference, the FCC requires that you stop using your product. Changes or modifications not expressly by the party responsible for compliance could void the user's authority to operate the equipment. This device complies with Part 15 of the FCC Rules. Operation is subject to the following two conditions: (1) this device may not cause harmful interference, and (2) this device must accept any interference received, including interference that may cause undesired operation.

FCC ID: 24HYVBAND

EU Compliance



PEAG LLC dba JLab Audio hereby declares that this device is in compliance with the essential requirements and other relevant provisions of the RED directive.

A copy of the EU Declaration of Conformity is available at jlabaudio.com/compliance
JLab Audio 2281 Las Palmas Drive, Suite 101, Carlsbad, CA 92011, USA



The symbol above indicates that this product and/or battery should not be disposed of with household waste. When you decide to dispose of this product and/or its battery, do so in accordance with local environmental laws and guidelines.

Battery Caution & Disposal Information

Please take care of your battery. Do not; disassemble, burn, puncture, crush or bend your battery. Improper operation of the battery may produce smoke, in such an event, ventilate the area. Extinguish any flames with carbon dioxide, dry-powder fire extinguisher, or cover with sand or mud. Take care to avoid conditions of excessive moisture for prolonged periods and do not immerse. Do not expose to temperatures above 50°C/122°F. Charge battery fully before storage or if stored for longer than three months.

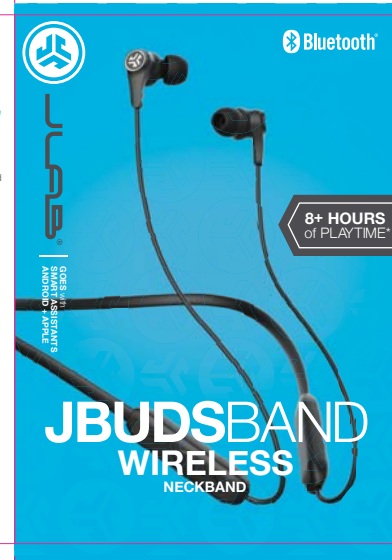
Disposal

At the end of its life, please take care to dispose of this product responsibly. Electronic products and batteries contain materials that can be harmful to the environment. Please do not dispose to unsorted waste. Take your electronic waste to a designated collection or recycling facility to be recycled properly. Your local council authority will be able to tell you where your nearest facilities are. There may be one at your local supermarket.

Contact Us

If you're unsatisfied with your purchase, please contact us and we'll take care of you! You can contact our US based customer support team:

Website: jlabaudio.com/contact
Email: support@jlabaudio.com
Phone U.S.: +1 (405) 445-7219 (M-F 8am-5pm PT)
Phone U.K.: +44 (20) 3884 3322 (M-F 1600-0100 GMT)
Visit jlabaudio.com/warranty to initiate a return or exchange.

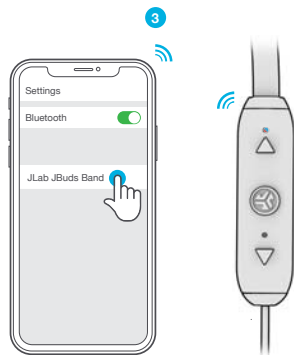
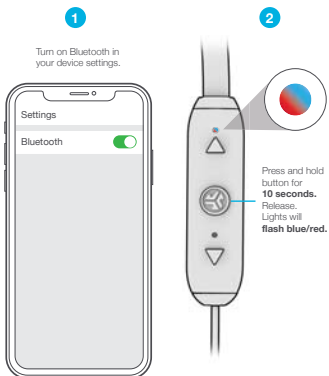


BACK

FRONT

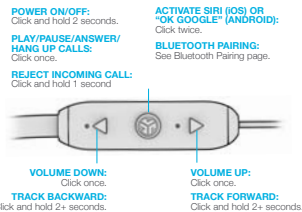
INSIDE

BLUETOOTH PAIRING



Select "JLab JBuds Band" in your device's Bluetooth settings to connect.
Lights will **slow blink blue** when Bluetooth is paired.

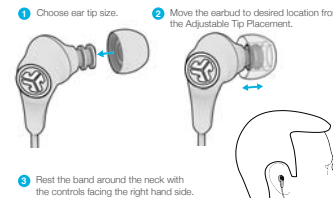
BUTTON FUNCTIONS



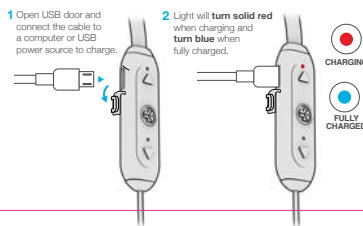
EQUALIZER MODES
Quick press both buttons for different EQ settings (JBuds Band will cycle 3 EQ settings)

- SIGNATURE (One Beep)**
JLab C3™ signature sound with amplified vocals and bass
- BALANCED (Two Beeps)**
Even sound with no additional sound enhancements
- BASS BOOST (Three Beeps)**
Amplified bass and sub-bass

FITTING



CHARGING



	Date: 09.26.18
PROJECT: JBuds Band Wireless QSG	
STOCK: 157g, MATTE	
INK: 4/4 CMYK / CMYK	
FLAT SIZE: 15.5" x 5.375"	
FOLDED SIZE: 3.875" x 5.375"	