



BUTTON FUNCTIONS

Power ON / OFF: Press Hold 2+ sec
 Play / Pause / Answer / Hang up: Single click
 Bluetooth Pairing (2 ways):
 When power is OFF, Press hold 5+ sec OR
 When power is ON, Double click

VOICE INDICATIONS

Hello: Power ON
 Ready to Pair: Speaker is ready to pair to Bluetooth device
 You're Connected: Speaker is connected to your device
 Goodbye: Power OFF
 Battery Full: 100-75%
 Battery Medium: 75-25%
 Low Battery: Less than 25%
 When power decreases to 10%, "Low Battery" will play

FCC Information

This equipment has been tested and found to comply with the limits for a Class B digital device, pursuant to Part 15 of the FCC Rules. These limits are designed to provide reasonable protection against harmful interference in a residential installation. This equipment generates, uses and can radiate radio frequency energy and, if not installed and used in accordance with the instructions, may cause harmful interference to radio communications. However, there is no guarantee that interference will not occur in a particular installation. If this equipment does cause harmful interference to radio or television reception, which can be determined by turning the equipment off and on, the user is encouraged to try to correct the interference by one or more of the following measures:

- Reorient or relocate the receiving antenna.
- Increase the separation between the equipment and receiver.
- Connect the equipment into an outlet on a circuit different from that to which the receiver is connected.
- Consult the dealer or an experienced radio/TV technician for help.

If you cannot eliminate the interference, the FCC requires that you stop using your product. Changes or modifications not expressly by the party responsible for compliance could void the user's authority to operate the equipment.

This device complies with Part 15 of the FCC Rules. Operation is subject to the following two conditions: (1) this device may not cause harmful interference, and (2) this device must accept any interference received, including interference that may cause undesired operation.



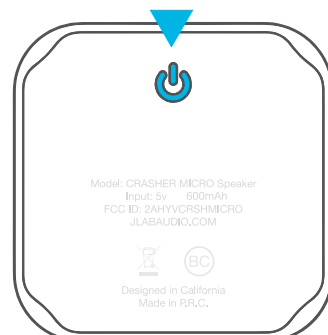
JLAB AUDIO
 QUICK START
 GUIDE



CRASHER MICRO
 ULTRA PORTABLE BLUETOOTH™ SPEAKER

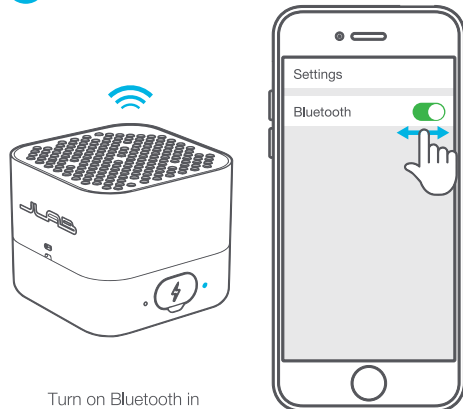
1

FIRST TIME SETUP



Press hold the Power Button for 5+ seconds.
 Voice prompt "Ready to pair" will play.

2



Turn on Bluetooth in your device settings.

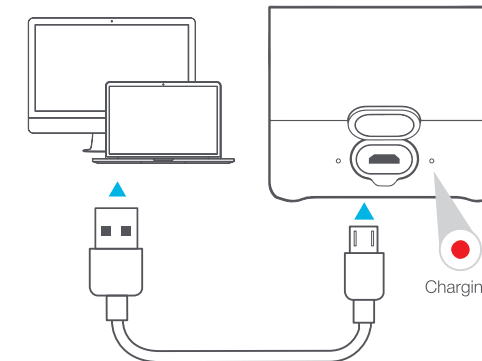
3



Select "JLab Crasher Micro" in your device settings.

Speaker will voice prompt "You're connected" followed by slow blinking blue light.

CHARGING



Open the Crasher Micro USB door and plug the included cable into a USB input device. The red light will indicate charging and turn off once fully charge.

Battery Caution & Disposal Information

- Improper operation of the battery (e.g., overcharging, crushing, puncture, excessive heat or moisture) may produce smoke. In such an event, ventilate the area.
- Extinguish any flames with carbon dioxide, dry-powder fire extinguisher, or cover with sand or mud.
- Do not disassemble, crush, puncture or incinerate.
- Do not expose to temperatures above 140° F.
- Do not dispose of the battery in the trash.
- Charge fully before storage or if stored for longer than three months.
- Do not dispose of batteries in a fire.
- Batteries should be disposed or recycled per state and local guidelines.

#FINDYOURGO

For full User Manual + other JLab products visit jlabaudio.com



Date: 05.24.17

PROJECT: Epic Air QSG

STOCK: 220g, MATTE

INK: 6/6 CMYK + 306 + Cool Gray 11 / CMYK + 306 + Cool Gray 11

FLAT SIZE: 13.75" x 2.75"

FOLDED SIZE: 2.75" x 2.75"