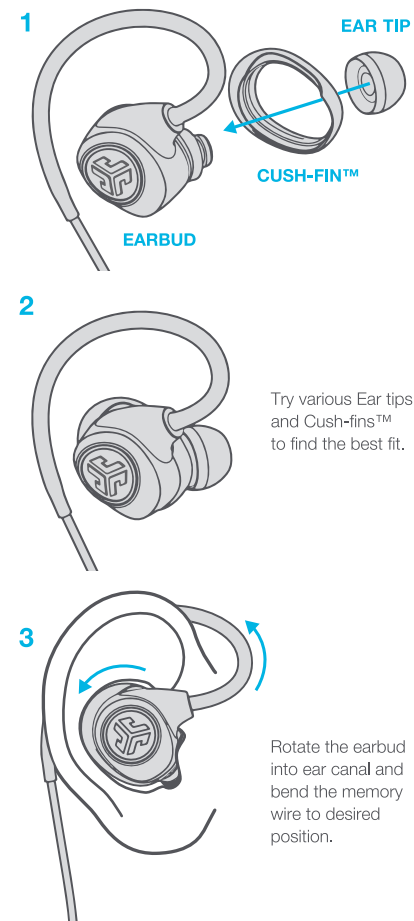


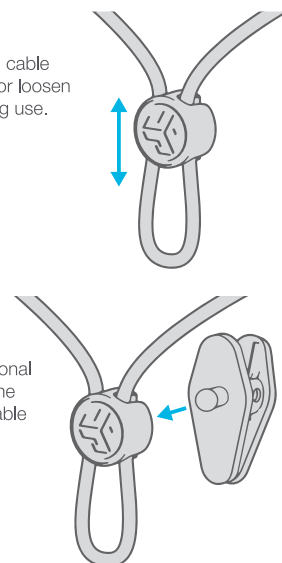
OUTSIDE

FITTING



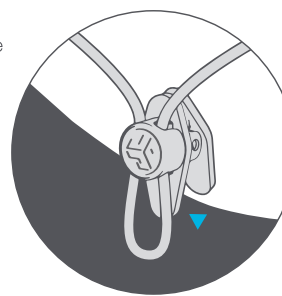
FITTING

Attach optional cable holder to tight or loosen the cable during use.



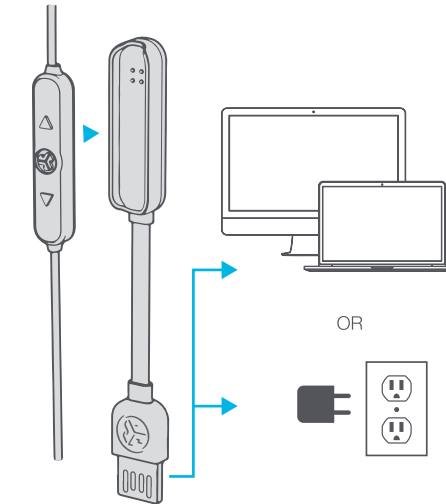
Insert the optional cable clip to the back of the cable holder.

Open the cable clip and attach to apparel.

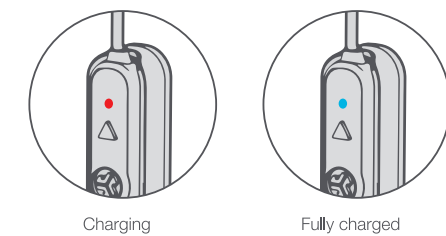


CHARGING

Place the JLab Epic 3 control box in the magnetic charging station and plug in the USB to a computer or USB output device to charge.



Red light will indicate charging and blue light indicates fully charged.



EQUALIZER MODES

Quick press both buttons

"SIGNATURE"
JLab C3™ signature sound with amplified vocals and bass

"BALANCED"
Even sound with no additional sound enhancements

"BASS BOOST"
Amplified bass and sub-bass

VOICE PROMPTS

"HELLO"
Power is ON

"BATTERY FULL" = 100-75%
"BATTERY MEDIUM" = 75-25%
"LOW BATTERY" = Less than 25%

"READY TO PAIR"
JLab Epic 3 earbuds are ready to connect to your Bluetooth device.

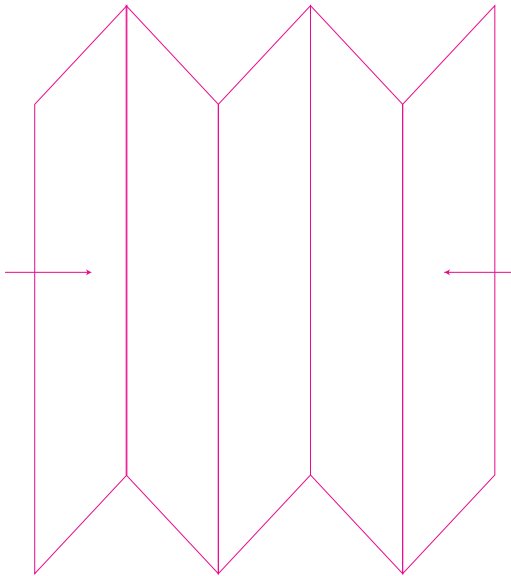
"YOU'RE CONNECTED"
JLab Epic 3 is connected to your Bluetooth device and ready for use.

"GOODBYE"
Power turning OFF



BACK

FRONT



CONTROLS

EQUALIZER MODES:
Quick press both buttons

VOLUME UP:
Quick press
TRACK FORWARD:
Press hold 2 seconds

POWER ON:
Press hold 3 seconds

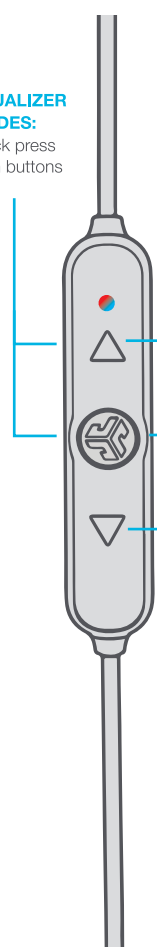
POWER OFF:
Press hold 5 seconds

PLAY/PAUSE/ANSWER/HANG UP:
Quick press

BLUETOOTH PAIR:
Press and hold 8 sec (see First Time Setup)

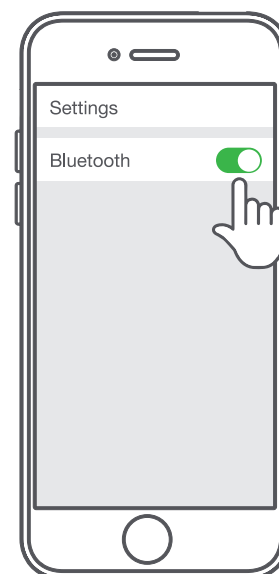
ACTIVATE GOOGLE/SIRI:
Press hold 2 seconds and release.

VOLUME DOWN:
Quick press
TRACK BACKWARD:
Press hold 2 seconds



FIRST TIME SETUP

1



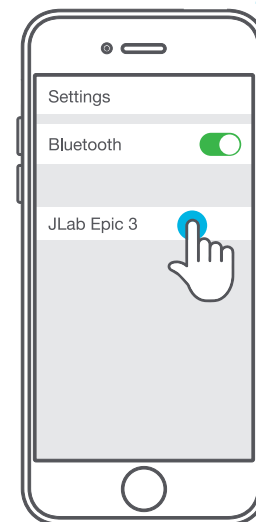
Turn on Bluetooth in your device settings.

2



Press and hold button for **8 seconds**. Release. Lights will blink red and blue to indicate pairing mode.

3



Select "JLab Epic" in your device settings to connect.

Lights will **slow blink blue** when Bluetooth is paired.

INSIDE

FCC Information

This equipment has been tested and found to comply with the limits for a Class B digital device, pursuant to Part 15 of the FCC Rules. These limits are designed to provide reasonable protection against harmful interference in a residential installation. This equipment generates, uses and can radiate radio frequency energy and, if not installed and used in accordance with the instructions, may cause harmful interference to radio communications. However, there is no guarantee that interference will not occur in a particular installation. If this equipment does cause harmful interference to radio or television reception, which can be determined by turning the equipment off and on, the user is encouraged to try to correct the interference by one or more of the following measures:

- Reorient or relocate the receiving antenna.
- Increase the separation between the equipment and receiver.
- Connect the equipment into an outlet on a circuit different from that to which the receiver is connected.
- Consult the dealer or an experienced radio/TV technician for help.

If you cannot eliminate the interference, the FCC requires that you stop using your product. Changes or modifications not expressly by the party responsible for compliance could void the user's authority to operate the equipment.

This device complies with Part 15 of the FCC Rules. Operation is subject to the following two conditions: (1) this device may not cause harmful interference, and (2) this device must accept any interference received, including interference that may cause undesired operation.

Battery Caution & Disposal Information

- Improper operation of the battery (e.g., overcharging, crushing, puncture, excessive heat or moisture) may produce smoke. In such an event, ventilate the area.
- Extinguish any flames with carbon dioxide, dry-powder fire extinguisher, or cover with sand or mud.
- Do not disassemble, crush, puncture or incinerate.
- Do not expose to temperatures above 140° F.
- Do not dispose of the battery in the trash.
- Charge fully before storage or if stored for longer than three months.
- Do not dispose of batteries in a fire.
- Batteries should be disposed or recycled per state and local guidelines.

JLABAUDIO.COM

	Date: 08.24.17
PROJECT: Epic 3 Bluetooth Gift Box	
STOCK: 220g, MATTE	
INK: 4/4 CMYK / CMYK	
FLAT SIZE: 12.5" x 5.125"	
FOLDED SIZE: 2.5" x 5.125"	