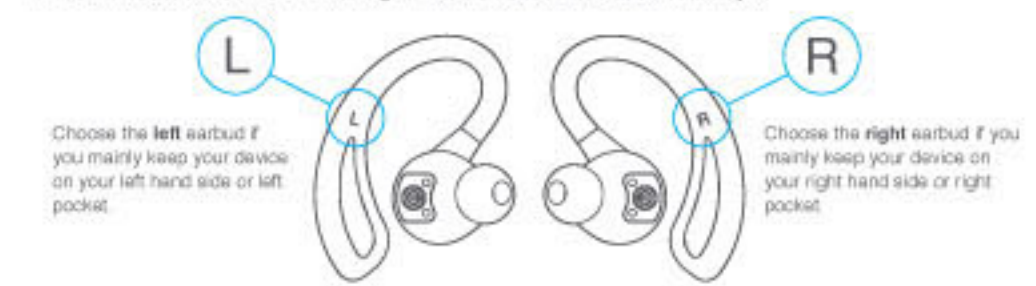


NOTE: This equipment has been tested and found to comply with the limits for a Class B digital device, pursuant to part 15 of the FCC Rules. These limits are designed to provide reasonable protection against harmful interference in a residential installation. This equipment generates uses and can radiate radio frequency energy and, if not installed and used in accordance with the instructions, may cause harmful interference to radio communications. However, there is no guarantee that interference will not occur in a particular installation. If this equipment does cause harmful interference to radio or television reception, which can be determined by turning the equipment off and on, the user is encouraged to try to correct the interference by one or more of the following measures:

PAIR TO BLUETOOTH

1 Choose one earbud that will connect to your Bluetooth device. This will be the earbud that will always connect to your mobile device and receive the Bluetooth signal. **Set the other earbud aside until step 5.**

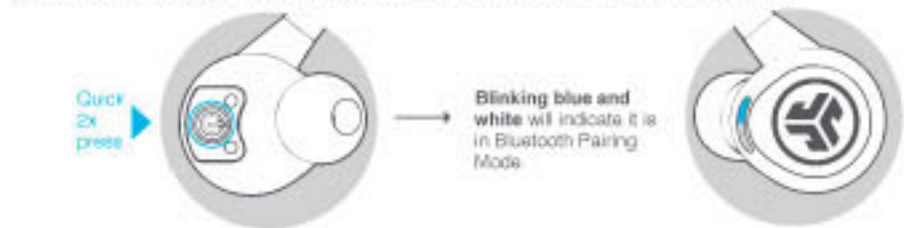


2 Press and hold the Power Button for 3 seconds on the inside earbud

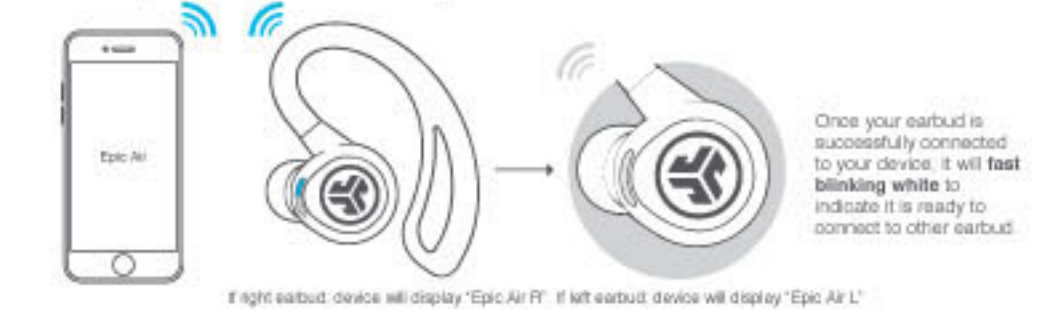


PAIR TO BLUETOOTH

3 Once power is ON, double press Power Button to enter earbud into Bluetooth Pairing Mode



4 Search for Epic Air in your Bluetooth device settings and connect.

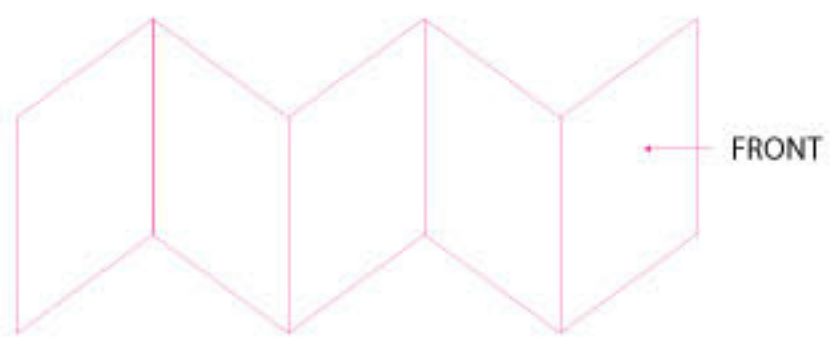


PAIR TO BLUETOOTH

5 Turn on other earbud by press and hold Power Button for 3 seconds.



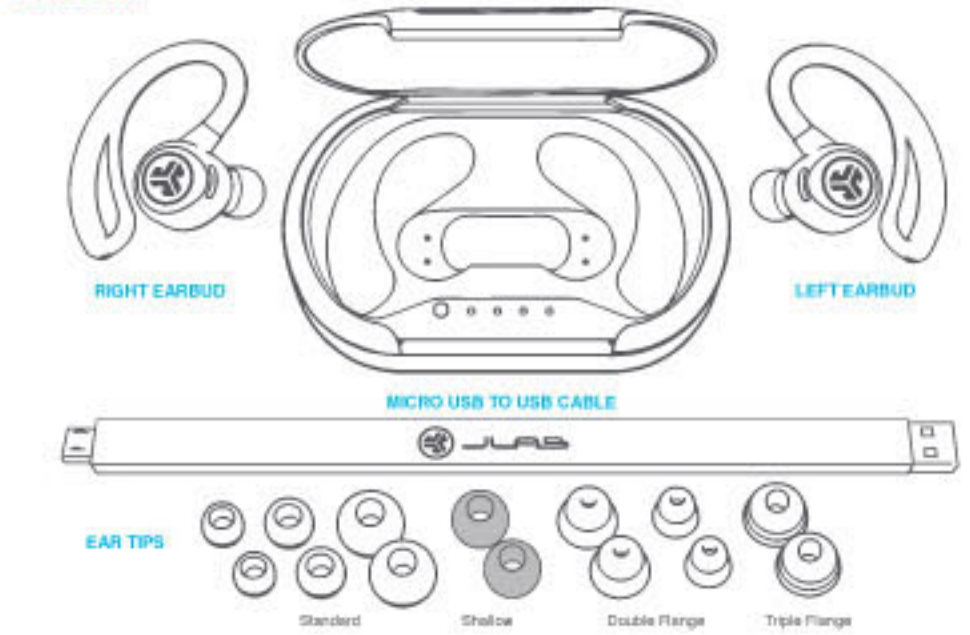
6 The earbuds will automatically connect. Both earbuds will slowly pulse white indicating successfully connected.

Ink: 4/4
 Stock: 220 gsm Matte
 TRIM: 23" X 3.75"
 FOLDED: 5.75" X 3.75"

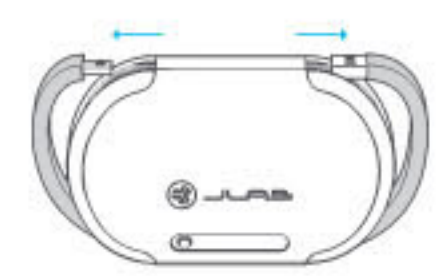
- Reorient or relocate the receiving antenna.
- Increase the separation between the equipment and receiver.
- Connect the equipment into an outlet on a circuit different from that to which the receiver is connected.
- Consult the dealer or an experienced radio/TV technician for help.

IN THE BOX



CHARGING the BATTERY CASE

1 Slide out USB cable from the back of the case



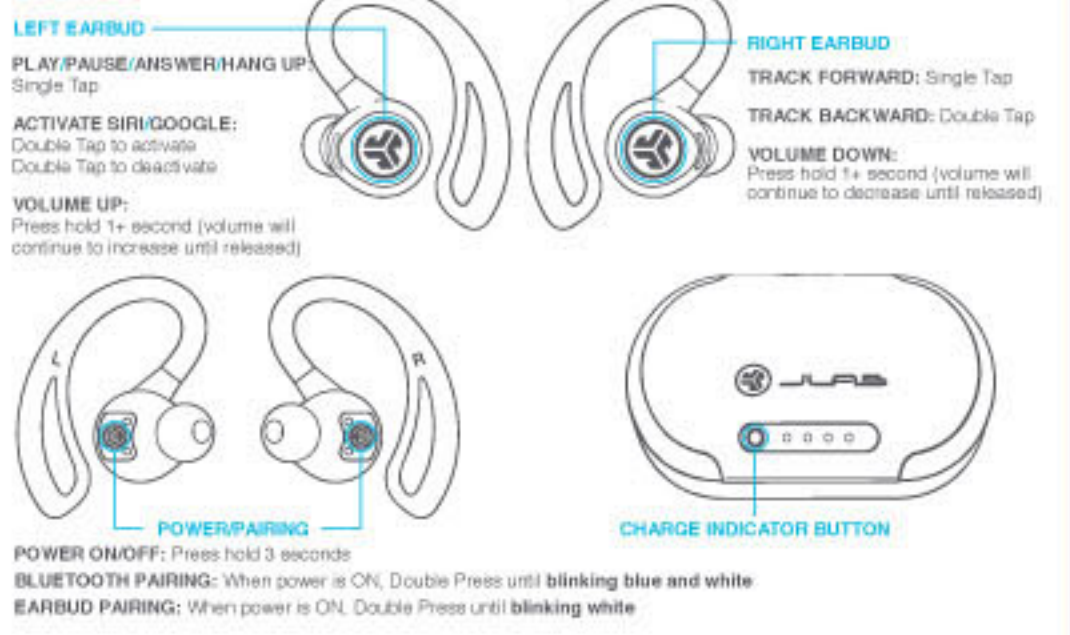
2 Plug in the Micro USB into the case and the USB into a computer or USB adapter to charge.



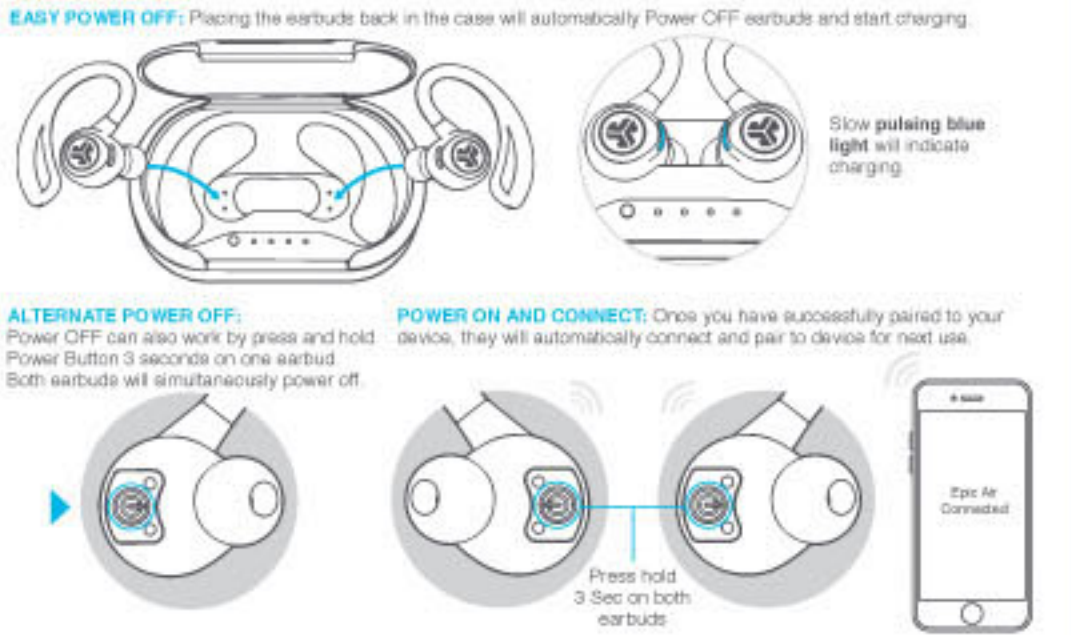
3



CONTROLS



RECURRING USE



Changes or modifications not expressly approved by the party responsible for compliance could void the user's authority to operate the equipment. This device complies with Part 15 of the FCC Rules. Operation is subject to the following two conditions:
 (1) this device may not cause harmful interference, and
 (2) this device must accept any interference received, including interference that may cause undesired operation.