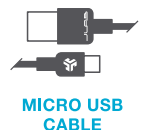
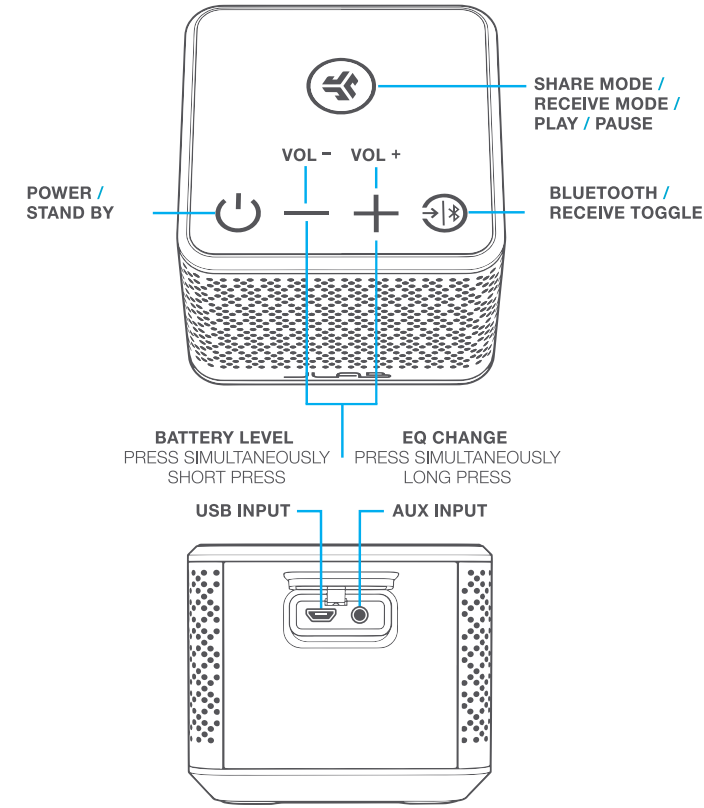


Accessories



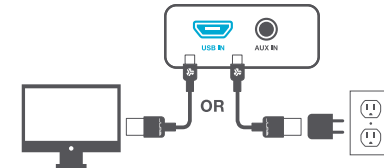
Speaker Ports / Buttons



CHARGING

Note: For optimum performance, charge overnight with Micro USB cable prior to using.

- Before charging, it is recommended you turn off the speaker.
- Open the silicone cover on the back of the speaker and connect the speaker to your computer or wall outlet using the provided Micro USB cable.
- The indicator light on the front of the speaker will **blink purple one time** to indicate charging is in progress. Allow about 6 hours to fully charge over.



POWER ON / OFF

Power ON: Press and hold for 2 seconds.
Power OFF: Press and hold for 4 seconds.
Stand By: When power is ON, press and hold for 2 seconds (See **Stand By** instructions for details)

PLAY / PAUSE

Quick Press to Play / Pause.

VOLUME CONTROL

Volume Down: — Volume Up: +

Green lights on ring will indicate volume level on speaker.

Note: Volume on the speaker works independently from your Bluetooth device. Adjust the volume on both the speaker and your device accordingly.

CHECK BATTERY LEVEL

Press both volume buttons simultaneously, (Short Press)

— + →

Purple lights on ring will indicate battery level on speaker.

CHANGE EQ SETTINGS

The House Party Speaker is pre-loaded with 2 EQ settings, for outside or inside.

To change the settings, hold both volume buttons for 3 seconds. The logo will flash green for outside and blue for inside.

CONNECT YOUR BLUETOOTH DEVICE

- Power the speaker ON
- Once Power is ON:
 - If you see the **blue pulsing logo**, the speaker is already in Bluetooth Mode. Follow Step 3.
 - If you see the **white rotating ring** → Quick Press the Bluetooth / Receive Toggle Button
 - Blue pulsing logo** will indicate Bluetooth Mode. Follow Step 3.
- Press and hold for 3 seconds the Bluetooth / Receive Toggle Button to enter pairing mode.
- Search for "JLab House Party" in your Bluetooth device settings and connect.



Once connected, a voice prompt "Bluetooth connected" and **solid blue logo** will be indicated. You are ready to play music.

RE-PAIR BLUETOOTH (OR PAIR NEW DEVICES)

- When Power is ON:
 - If you see the **blue pulsing logo** the speaker is already in Bluetooth Mode. Follow Step 2.
 - If you see the **white rotating ring** → Quick Press the Bluetooth / Receive Toggle Button
 - Blue pulsing logo** will indicate Bluetooth Mode. Follow Step 2.
- Press and hold for 3 seconds the Bluetooth / Receive Toggle Button to enter pairing mode.
- Blue pulsing logo** will indicate **Bluetooth Re-Pairing**. Search for "JLab House Party" in your Bluetooth device settings and connect.

Note: If you have multiple Bluetooth devices connecting and want to connect a specific device, make sure you turn the Bluetooth OFF on your other devices so the speaker can connect to your desired device.

- Bluetooth is a wireless radio technology, which means it is sensitive to objects between the speaker and the connected device. The speaker is designed to be used within 33 feet (10 meters) of a connected device, with no major objects in between (walls, etc.).
- Once successfully connected, the speaker will memorize your device and automatically pair when turned on in the future. Only one device may be connected at a time. To pair a different device, first unpair the current in its Bluetooth settings.
- If for any reason Bluetooth connection is lost, manually reconnect your Bluetooth device.



JLABAUDIO.COM

SHARE MODE (LINK SPEAKERS)

- Power ON chosen Main/Sharing speaker. Connect the speaker to your Bluetooth device. Once connected, **set this speaker aside until step 4.** (Follow the **Connect Your Bluetooth Device** instructions if speaker is not connected to your device)
- Power ON the other House Party or Block Party speaker(s) to enter them in **Receive Mode** as follows:
 - If you see the **white rotating ring** then you are already in **Receive Mode**. Follow Step 3.
 - If you see the **blue pulsing light** → Quick Press the Bluetooth / Receive Toggle Button
 - White rotating ring** will indicate **Receive Mode**. Follow Step 3.
- Press and Hold 3 Seconds Share Mode / Receive Mode Button
 - White blinking ring** will indicate that it is set to receive. All receiving speakers must be blinking white to link Main/Sharing speaker.

SHARE MODE CONTINUED

- Return to the Main/Sharing speaker that is connected to your Bluetooth device.
 - Press and Hold for 3 Seconds the Share Mode Button
 - Share Mode will flash blue** indicating it is searching for **Receiving speakers**
- Once the speakers are linked:
 - Main/Sharing speaker** will turn **solid blue**
 - Receiving speaker(s)** will turn **solid white**

ABOUT STAND BY MODE

Stand By Mode has the capability to turn On, Off, and reconnect ALL Receiving speakers that are connected to the Main/Sharing speaker. This capability works when all speakers are plugged into an AC outlet and when Share Mode has already been set up.

USE STAND BY MODE WHEN SPEAKERS ARE LINKED

- When speakers are linked/shared, press and hold 2 seconds on the Power button of the **Main/Sharing speaker**
 - All speakers will turn to **red logo** to indicate **Stand By Mode** is activated

- Press and hold 2 seconds on the Power button of **Main/Sharing speaker**. This will turn back on the speaker and wake the Receiving speakers.
 - The logo will **pulse blue** and auto-connect to your Bluetooth device.
- Press and hold the Share Mode button for 3 seconds
 - Blue pulsing ring** will initiate the speakers to reconnect. All **Receiving speakers** will reestablish connection.

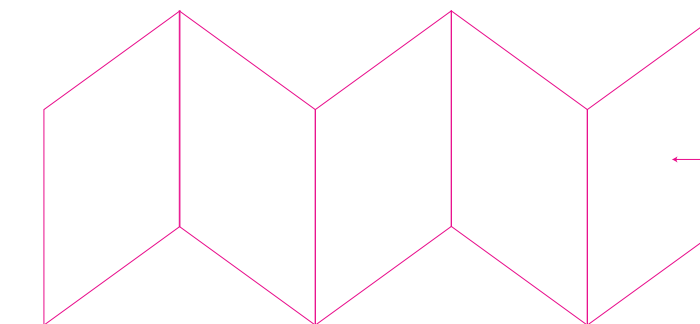


LET'S GET THE PARTY STARTED

JLAB | USER MANUAL



Bluetooth
HOUSE PARTY
 WIRELESS MULTIROOM BLUETOOTH® SPEAKER



FRONT

Ink: 4/4
 Stock: 220 gsm Matte
 TRIM: 24.6063" X 5"
 FOLDED: 4.9213" X 5"

FCC Information

This equipment has been tested and found to comply with the limits for a Class B digital device, pursuant to Part 15 of the FCC Rules. These limits are designed to provide reasonable protection against harmful interference in a residential installation. This equipment generates, uses and can radiate radio frequency energy and, if not installed and used in accordance with the instructions, may cause harmful interference to radio communications. However, there is no guarantee that interference will not occur in a particular installation. If this equipment does cause harmful interference to radio or television reception, which can be determined by turning the equipment off and on, the user is encouraged to try to correct the interference by one or more of the following measures:

- Reorient or relocate the receiving antenna.
- Increase the separation between the equipment and receiver.
- Connect the equipment into an outlet on a circuit different from that to which the receiver is connected.
- Consult the dealer or an experienced radio/TV technician for help.

If you cannot eliminate the interference, the FCC requires that you stop using your product. Changes or modifications not expressly by the party responsible for compliance could void the user's authority to operate the equipment.

This device complies with Part 15 of the FCC Rules. Operation is subject to the following two conditions: (1) this device may not cause harmful interference, and (2) this device must accept any interference received, including interference that may cause undesired operation.

This equipment complies with FCC radiation exposure limits set forth for an uncontrolled environment. This equipment should be installed and operated with minimum distance 20cm between the radiator & your body.

Battery Caution & Disposal Information

- Improper operation of the battery (e.g., overcharging, crushing, puncture, excessive heat or moisture) may produce smoke. In such an event, ventilate the area.
- Extinguish any flames with carbon dioxide, dry-powder fire extinguisher, or cover with sand or mud.
- Do not disassemble, crush, puncture or incinerate.
- Do not expose to temperatures above 140° F.
- Do not dispose of the battery in the trash.
- Charge fully before storage or if stored for longer than three months.
- Do not dispose of batteries in a fire.
- Batteries should be disposed or recycled per state and local guidelines.