



WELCOME TO THE LAB

The Lab is where you'll find real people, developing really great products, in a real place called San Diego.

PERSONAL TECH DONE BETTER



Designed for You

We actually listen to what you want and we're always looking for ways to make everything easier and better for you.



Lab Quality Sound

Choose from different settings and customize your sound style to match exactly what you're doing.



Surprisingly Awesome Value

We always pack in the most functionality and fun into every product at a truly accessible price.

#yourkindoftech

Tech all about you

THE RIGHT SOUND FOR EVERY MOMENT

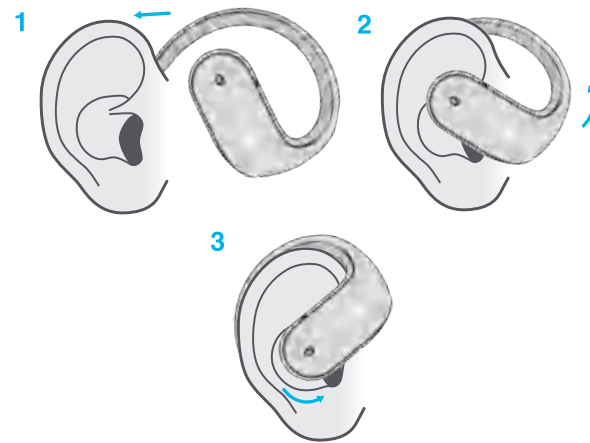
EQUALIZER MODES

"JLab SIGNATURE"
JLab C3™ signature sound with amplified vocals and bass

"BALANCED"
Even sound with no additional sound enhancements

"CUSTOM"
Personalize your EQ through the JLab App

FIND YOUR FIT



WITH LOVE FROM THE LAB

We have lots of different ways to show we care.

GET STARTED + FREE GIFT

Product updates | How-to tips | FAQs & more

Go to jlab.com/register to unlock your customer benefits including a free gift.

Gift for US only. No APO/FPO/DPO addresses.

WE GOT YOUR BACK

We're obsessed with creating the best possible experience around owning our products. If you have any questions, concerns, or feedback, we're here for you. Contact a real human on our U.S.-based customer support team:

Website: jlab.com/contact

Email: support@jlab.com

Phone U.S.: +1 (405) 445-7219

Phone U.K./EU: +44 (20) 8142 9361 (Check hours jlab.com/hours)

Visit jlab.com/warranty to initiate a return or exchange.

LATEST AND GREATEST

Our team is constantly improving your product experience. This model may have new features or controls which are not detailed in this guide.

For the latest version of the manual, scan the QR code below.



FCC ID: 2AHYY-OPSPRT
IC: 21316-OPSPRT
Model: JBuds Open Sport

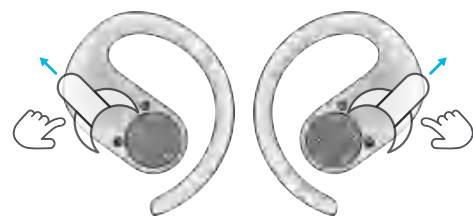


JBUDS OPEN SPORT AIR CONDUCTION WIRELESS EARBUDS

QUICK START GUIDE

PAIR UP

1 Remove stickers and place back in charging case.



2 Blue light on case indicates charge. Remove earbuds.

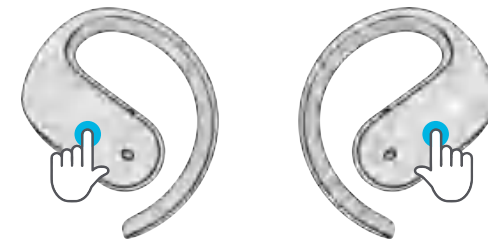


3 One earbud blinks blue/white = Ready to Pair. Connect to JLab JBuds Open Sport in your device settings.



GO AHEAD, PRESS THE BUTTON

1x ● 2x ●● 3x ●●● Press Hold ●●●●



VOLUME DOWN ●
SIRI/OK GOOGLE ●●
TRACK BACK ●●●
EQ CHANGE ●●●●

VOLUME UP ●
PLAY/PAUSE ●●●
TRACK FORWARD ●●●●
EQ CHANGE ●●●●

ANSWER CALL ●●

HANG UP ●●●

REJECT INCOMING CALLS ●●●●

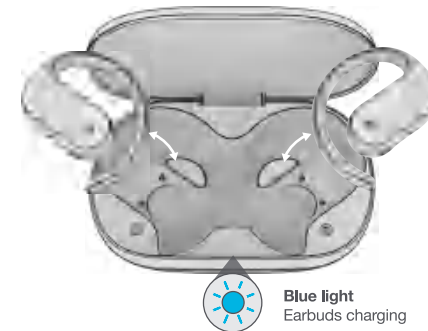
DOWNLOAD THE APP

Customize JBuds Open Sport features and update the latest software. Download the **JLab App** in Apple/Google Play Store.

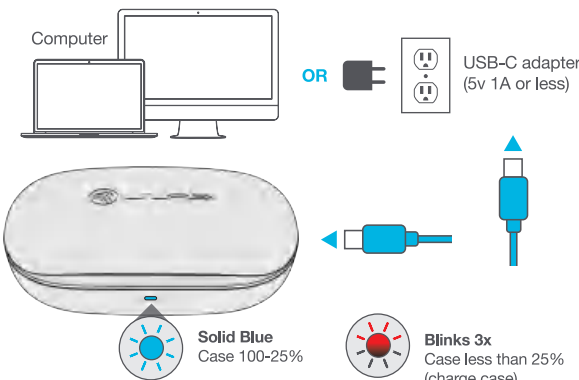


GET CHARGED (EARBUDS)

Earbuds auto power off and start charging when placed in case. Earbuds will auto-connect when removed.



GET CHARGED (CASE)

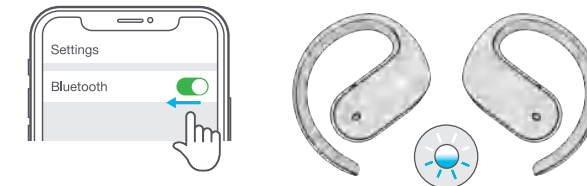


Solid Blue
Case 100-25%

Blinks 3x
Case less than 25%
(charge case)

MULTIPOINT

1 Once **FIRST** device is connected, turn off Bluetooth in device settings. Earbuds will auto enter Bluetooth Pairing.



2 Enter your **SECOND** device Bluetooth settings and connect.



3 Enter your **FIRST** device Bluetooth settings. Turn on Bluetooth and connect to JBuds Open Sport.



Date: 06.17.24

PROJECT: JBuds Open Sport QSG

STOCK: 157g, MATTE

INK: 4/4 CMYK/CMYK

FLAT SIZE: 340mm x 120mm

FOLDED SIZE: 85mm x 120mm