

OUTSIDE

#FINDYOURGO

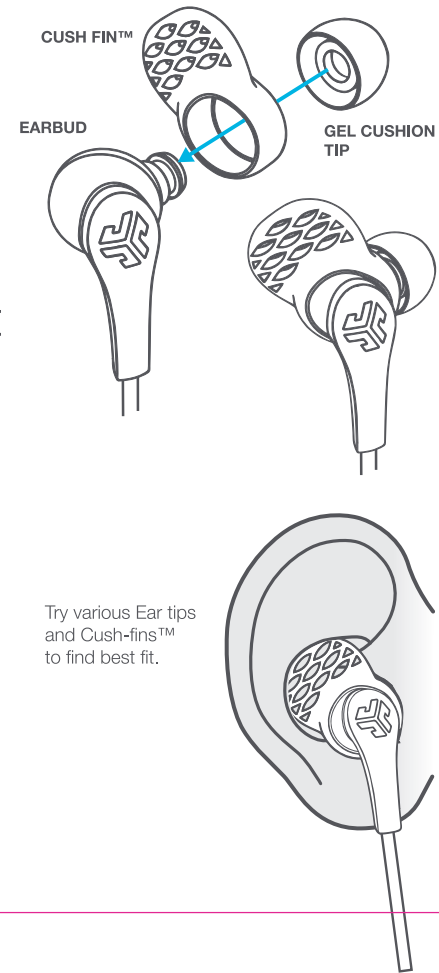
JLABAUDIO.COM



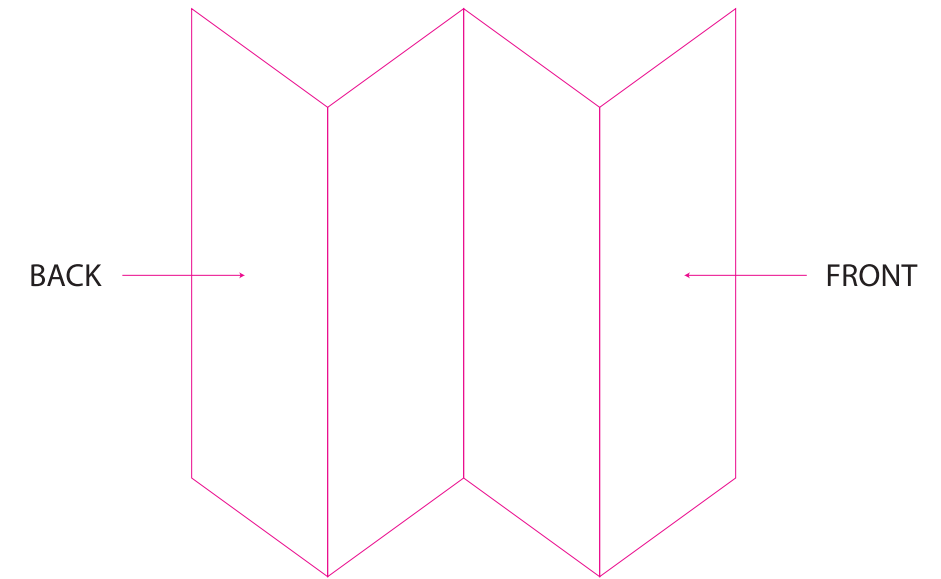
CHARGING

- 1 Open USB door and connect the cable to a computer or USB power source to charge.
- 2 Light will turn solid red when charging and turn blue when fully charged.
- 3 To ensure the water resistance of your JBuds PRO, the cover for the Micro USB port must be firmly closed.

FITTING



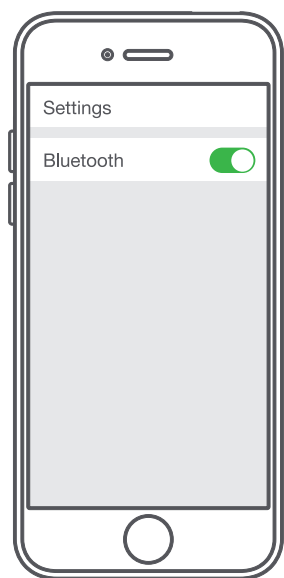
Try various Ear tips and Cush-fins™ to find best fit.



INSIDE

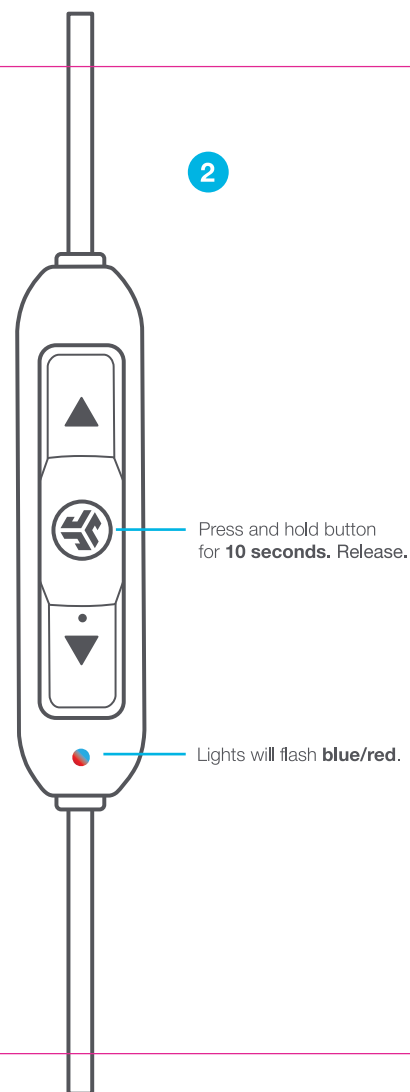
BLUETOOTH PAIRING

1



Turn on Bluetooth in your device settings.

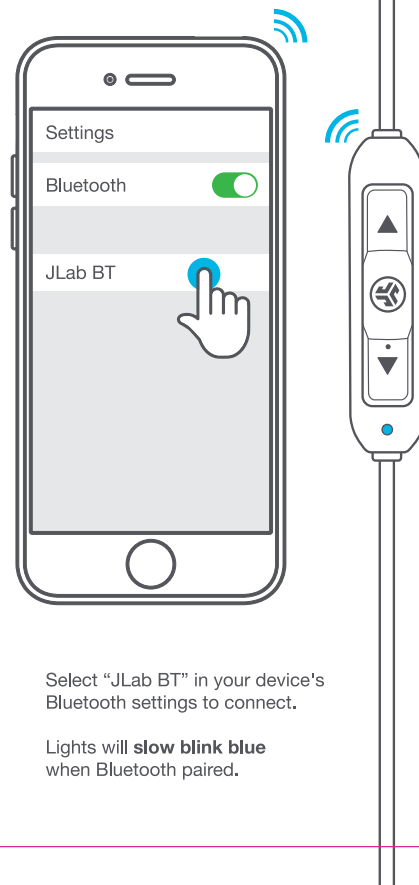
2



Press and hold button for **10 seconds**. Release.

Lights will flash **blue/red**.

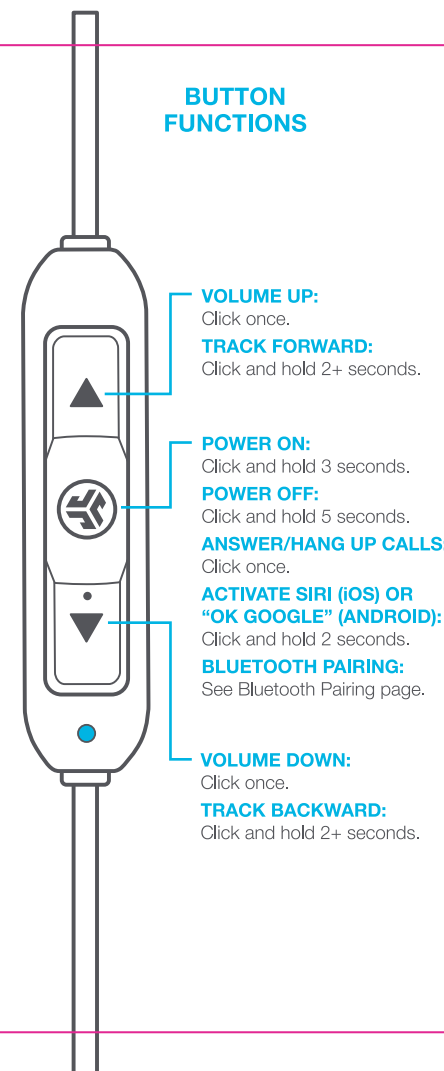
3



Select "JLab BT" in your device's Bluetooth settings to connect.

Lights will **slow blink blue** when Bluetooth paired.

BUTTON FUNCTIONS



VOLUME UP:
Click once.
TRACK FORWARD:
Click and hold 2+ seconds.

POWER ON:
Click and hold 3 seconds.

POWER OFF:
Click and hold 5 seconds.

ANSWER/HANG UP CALLS:
Click once.

ACTIVATE SIRI (IOS) OR "OK GOOGLE" (ANDROID):
Click and hold 2 seconds.

BLUETOOTH PAIRING:
See Bluetooth Pairing page.

VOLUME DOWN:
Click once.

TRACK BACKWARD:
Click and hold 2+ seconds.

FCC Information

This equipment has been tested and found to comply with the limits for a Class B digital device, pursuant to Part 15 of the FCC Rules. These limits are designed to provide reasonable protection against harmful interference in a residential installation. This equipment generates, uses and can radiate radio frequency energy and, if not installed and used in accordance with the instructions, may cause harmful interference to radio communications. However, there is no guarantee that interference will not occur in a particular installation. If this equipment does cause harmful interference to radio or television reception, which can be determined by turning the equipment off and on, the user is encouraged to try to correct the interference by one or more of the following measures:

- Reorient or relocate the receiving antenna.
- Increase the separation between the equipment and receiver.
- Connect the equipment into an outlet on a circuit different from that to which the receiver is connected.
- Consult the dealer or an experienced radio/TV technician for help.

If you cannot eliminate the interference, the FCC requires that you stop using your product. Changes or modifications not expressly by the party responsible for compliance could void the user's authority to operate the equipment.

This device complies with Part 15 of the FCC Rules. Operation is subject to the following two conditions: (1) this device may not cause harmful interference, and (2) this device must accept any interference received, including interference that may cause undesired operation.

Battery Caution & Disposal Information

- Improper operation of the battery (e.g., overcharging, crushing, puncture, excessive heat or moisture) may produce smoke. In such an event, ventilate the area.
- Extinguish any flames with carbon dioxide, dry-powder fire extinguisher, or cover with sand or mud.
- Do not disassemble, crush, puncture or incinerate.
- Do not expose to temperatures above 140° F.
- Do not dispose of the battery in the trash.
- Charge fully before storage or if stored for longer than three months.
- Do not dispose of batteries in a fire.
- Batteries should be disposed or recycled per state and local guidelines.