



REX™ Digital Music System User Guide

ALTEC LANSING



DRAFT 4



The lightning flash with arrowhead, within an equilateral triangle, is intended to alert the user to the presence of uninsulated "dangerous voltage" within the product's enclosure that may be of sufficient magnitude to constitute a risk electric shock to persons.

CAUTION

To prevent electric shock do not use this (polarized) plug with an extension cord, receptacle or other outlet unless the blades can be fully inserted to prevent blade exposure.

WARNING

To reduce the risk of fire or electric shock, do not expose this appliance to rain or moisture.

IMPORTANT SAFETY INSTRUCTIONS

1. Read these instructions.
2. Keep these instructions.
3. Heed all warnings.
4. Follow all instructions.
5. Do not use this apparatus near water – This apparatus shall not be exposed to dripping or splashing, and no objects filled with liquids, such as vases, shall be placed on the apparatus.
6. Clean only with dry cloth.
7. Do not block any ventilation openings. Install in accordance with the manufacturer's instructions. The apparatus should not be situated on a bed, sofa, rug or similar surface that may block the ventilation openings. The apparatus must not be placed in a built-in installation, such as a closed bookcase or cabinet that may impede the flow of air through the ventilation openings. Ventilation should not be impeded by covering the openings with items such as newspapers, tablecloths, curtains, etc.
8. Do not install near any heat sources such as radiators, heat registers, stoves, or other apparatus (including amplifiers) that produce heat.
9. No naked flame sources, such as lighted candles, should be placed on the apparatus.
10. Do not defeat the safety purpose of the polarized or grounding-type plug. A polarized plug has two blades with one wider than the other. A grounding type plug has two blades and a third grounding prong. The wide blade or the third prong are provided for your safety. If the provided plug does not fit into your outlet, consult an electrician for the replacement of the obsolete outlet.
11. Protect the power cord from being walked on or pinched – particularly at plugs, convenience receptacles, and the point where they exit from the apparatus.
12. Do not install in an area which impedes the access to the power plug. Disconnecting the power plug is the only way to completely remove power to the product and must be readily accessible at all times.
13. Power source – Use only power supplies of the type specified in the operating instructions or as marked on the appliance. If a separate power supply is included with this apparatus, do not substitute with any power supply – use only manufacturer-provided power supplies.
14. Unplug this apparatus during lightning storms or when unused for long periods of time.



Caution: To prevent the risk of electric shock, do not remove cover (or back). No user-serviceable parts inside. Refer servicing to qualified service personnel.

15. Refer all servicing to qualified service personnel. Servicing is required when the apparatus has been damaged in any way, such as power-supply cord or plug is damaged, liquid has been spilled or objects have fallen into the apparatus, the apparatus has been exposed to rain or moisture, does not operate normally, or has been dropped. For service, refer to qualified service personnel, return to the dealer, or call the Altec Lansing service line for assistance.
16. For products which incorporate batteries, please refer to local regulations for proper battery disposal.
17. Only use attachments/accessories specified by the manufacturer.
18. Use only with the cart, stand, tripod, bracket, or table specified by the manufacturer or sold with the apparatus. When a cart is used, avoid caution when moving the cart/apparatus combination to avoid injury from tip-over.



Altec Lansing One Year Limited Warranty (Two-Year Limited Warranty In the European Union and Asia)

What Does The Warranty Cover?: Altec Lansing warrants that its products shall be free from defects in materials or workmanship, with the exceptions stated below.

What Is The Period Of Coverage?: For units purchased in European Union or Asia, this warranty runs for two years from the date of purchase. For units not purchased in Europe or Asia, this warranty runs for one year from the date of purchase. The term of any warranties implied by law shall expire when your limited warranty expires. Some states and/or Member States in the European Union do not allow limitations on how long an implied warranty lasts, so the above limitation may not apply to you.

What Does The Warranty Not Cover?: This warranty does not cover any defect, malfunction or failure that occurs as a result of: improper installation; misuse or failure to follow the product directions; abuse; or use with improper, unintended or faulty equipment. (For information on proper installation, operation and use consult the manual supplied with the product. If you require a replacement manual, you may download a manual from www.alteclansing.com.) Also, consequential and incidental damages are not recoverable under this warranty. Some states do not allow the exclusion or limitation of incidental or consequential damages, so the above limitation or exclusion may not apply to you.

What Will Altec Lansing Do To Correct The Problem?: Altec Lansing will, at its option, repair or replace any product that proves to be defective in material or workmanship. If your product is no longer being manufactured, or is out of stock, at its option, Altec Lansing may replace your product with a similar or better Altec Lansing product.

How To Get Warranty Service: To get a covered product repaired or replaced, you must contact Altec Lansing during the warranty period by e-mail (csupport@alteclansing.com). You must include in your e-mail, your name, address, e-mail address, telephone number, date of purchase and a complete description of the problem you are experiencing. In the United States, you may alternatively contact Altec Lansing by telephone at 1-800-ALTEC88 — please be prepared to provide the same information. If the problem appears to be related to a defect in material or workmanship, Altec Lansing will provide you a return authorization and instructions for return shipment. Return shipments shall be at the customer's expense, and the return must be accompanied by the original proof of purchase. You should insure the shipment as appropriate because you are responsible for the product until it arrives at Altec Lansing.



The exclamation point within an equilateral triangle is intended to alert the user to the presence of important operating and maintenance (servicing) instructions in the literature accompanying the appliance.

How Will State Law Affect Your Rights?: This warranty gives you specific legal rights, and you may also have other rights which vary from state to state. Please note that in the European Union, you as a consumer might have other legal rights under national legislation of European Union Member States governing the sale of Altec Lansing's goods. Those rights are not affected by this guarantee.

The above limited warranties and remedies are sole warranties and remedies available to purchaser, if, and to the extent, valid and enforceable under the applicable law.

Customer Service

The answers to most setup and performance questions can be found in the Troubleshooting guide. You can also consult the FAQs in the customer support section of our Web site at www.alteclansing.com. If you live in North America and still can't find the information you need, please call our customer service team for assistance before returning the speakers to your retailer under their return policy.

Tel: 800-258-3288

E-mail: csupport@alteclansing.com


If you live outside of North America, please visit our web site at www.alteclansing.com and select your country's distributor.

For the most up-to-date information, be sure to check our Web site at www.alteclansing.com.

International Distribution

International customers: For information regarding the distribution of Altec Lansing products in your country, please visit www.alteclansing.com and click on your region.

Disposal of Old Electrical & Electronic Equipment

 This symbol on the product or on its packaging indicates that this product shall not be treated as household waste. Instead it shall be handed over to the applicable collection point for the recycling of electrical and electronic equipment. By ensuring this product is disposed of correctly, you will help prevent potential negative consequences for the environment and human health, which could otherwise be caused by inappropriate waste handling of this product. The recycling of materials will help to conserve natural resources. For more detailed information about recycling of this product, please contact your local city office or your household waste disposal service.

FEDERAL COMMUNICATIONS COMMISSION INTERFERENCE STATEMENT

This equipment has been tested and found to comply with the limits for a Class B digital device, pursuant to Part 15 of the FCC Rules. These limits are designed to provide reasonable protection against harmful interference in a residential installation. This equipment generates, uses and can radiate radio frequency energy and, if not installed and used in accordance with the instructions, may cause harmful interference to radio communications. However, there is no guarantee that interference will not occur in a particular installation. If this equipment does cause harmful interference to radio or television reception, which can be determined by turning the equipment off and on, the user is encouraged to try to correct the interference by one or more of the following measures:

- Reorient or relocate the receiving antenna.
- Increase the separation between the equipment and receiver.
- Connect the equipment into an outlet on a circuit different from that to which the receiver is connected.
- Consult the dealer or an experienced radio/TV technician for help.

CAUTION:

Any changes or modifications not expressly approved by the party responsible for compliance could void the user's authority to operate the equipment.

RF exposure warning

This equipment must be installed and operated in accordance with provided instructions and the antenna(s) used for this transmitter must be installed to provide a separation distance of at least 20 cm from all persons and must not be co-located or operating in conjunction with any other antenna or transmitter. End-users and installers must be provide with antenna installation instructions and transmitter operating conditions for satisfying RF exposure compliance.

Canada Warning

"Industry Canada regulatory information Operation is subject to the following two conditions: (1) this device may not cause interference, and (2) this device must accept any interference, including interference that may cause undesired operation of the device." "The user is cautioned that this device should be used only as specified within this manual to meet RF exposure requirements. Use of this device in a manner inconsistent with this manual could lead to excessive RF exposure conditions."



Meet Rex

Welcome to the REX Digital Music System—a revolution in home audio entertainment. REX is elegant and simple, designed to be at home in any room where you want your music.

You might have a music library on the computer in the home office, a CD playing on the stereo in the family room, and a fresh playlist on the iPod charging in the bedroom. REX brings all this music to you, so you can listen to your music in any room with a REX.

You can easily browse libraries of digital music from the various sources available on your home network or attached to REX units in your home. Build a *REX Queue* or listen to playlists, albums, tracks grouped by artist and genre, or individual tracks.

REX flexes to your home-music needs. To bring your music to another room, just add another REX. With the REX Legacy, you can even make your home stereo part of your network, wirelessly.





Register your Rex at www.rex.com/owners so we can let you know about new features as they become available. While you're there, give us your feedback so we can make REX even better.




Use the Quick Start Guide to connect and configure your Rex right away or see Set up + software, page 22, for more details.

Thanks for inviting Rex into your home!

Contents

To start using REX quickly, please see the **Quick Start Guide**.

 Meet REX	3
Controls	6
REX.....	6
Remote control.....	8
 Listen to your digital music	9
Choose a source.....	9
Network Browsing.....	10
Browse iPod and mp3 players.....	11
Build a <i>REX Queue</i>	11
Control your <i>REX Queue</i>	12
 Listen to other sources	13
Link to another REX.....	13
FM radio.....	13
AUX.....	15
Compatibility	16
 Connect REX	18
Your home network.....	18
iPod.....	19
USB.....	20
AUX.....	21

	Power supply	21
	Ethernet.....	21
	FM Antenna.....	21
	Headphones.....	21
	Set up + software	22
	Set-up wizard	22
	Manage settings.....	24
	Media player software.....	26
	Automatic updates.....	26
	Clock, alarm + sleep features	27
	Clock and alarm settings	27
	Alarm 1/Alarm 2	27
	Set Clock mode	28
	Sleep timer	28
	Getting help	29
	Frequently asked questions	29
	Technical support	31
	Glossary	32
	Technical specifications	34

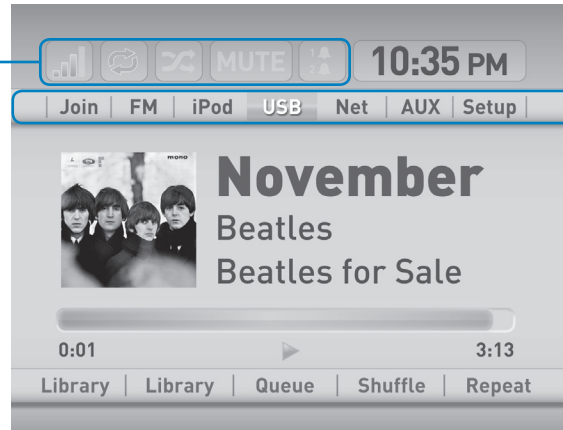


Controls : REX™ Control Panels + Display

Display

STATUS BAR ICONS

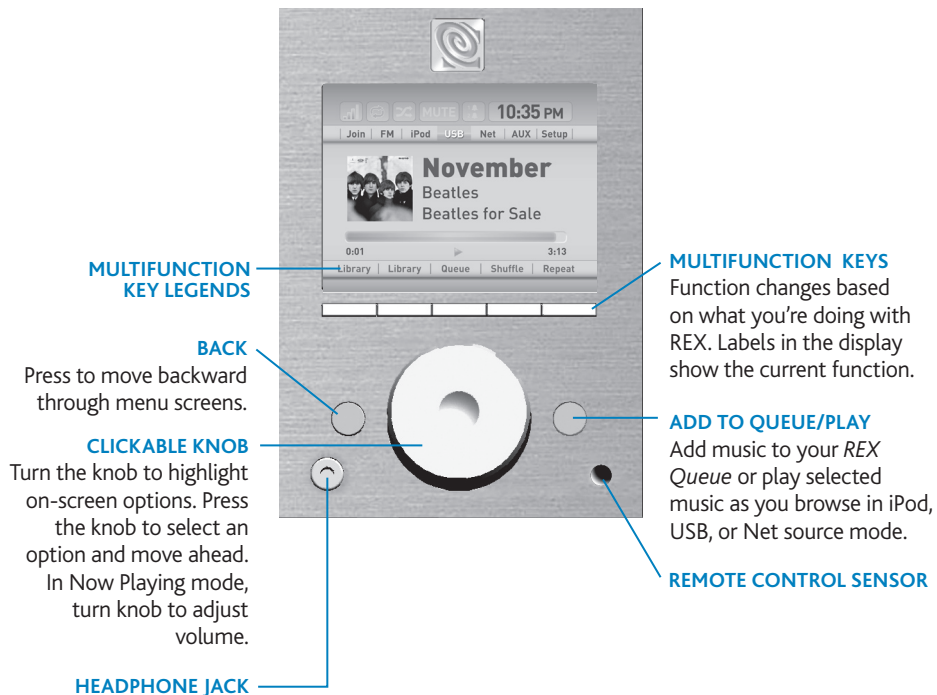
- No wireless signal
- Wireless signal present, but no Internet
- Wireless signal present, with Internet
- "Repeat queue" is active
- Queue has been shuffled
- MUTE** Mute is active
- Alarm 1 enabled
- Alarm 2 enabled



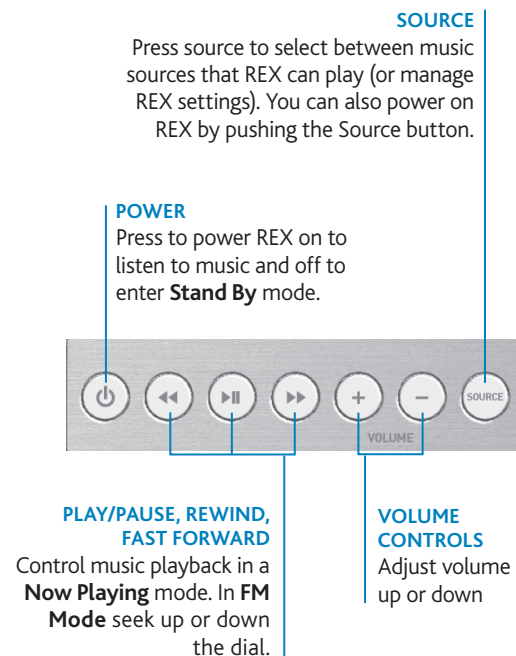
SOURCE SELECT ICONS

- Link** Listen to the same music that is playing on another REX.
- FM** Listen to FM radio.
- iPod** Browse and listen to music from an attached iPod (with optional dock).
- USB** Browse and listen to music from a compatible MP3 player or USB drive.
- Net** Browse and listen to music from sources connected to your home network, including PCs and Macs and USB mass storage devices attached to a REX.
- AUX** Listen to music from portable music players, such as CD players connected to AUX jack in back of the REX.
- Setup** Manage REX settings

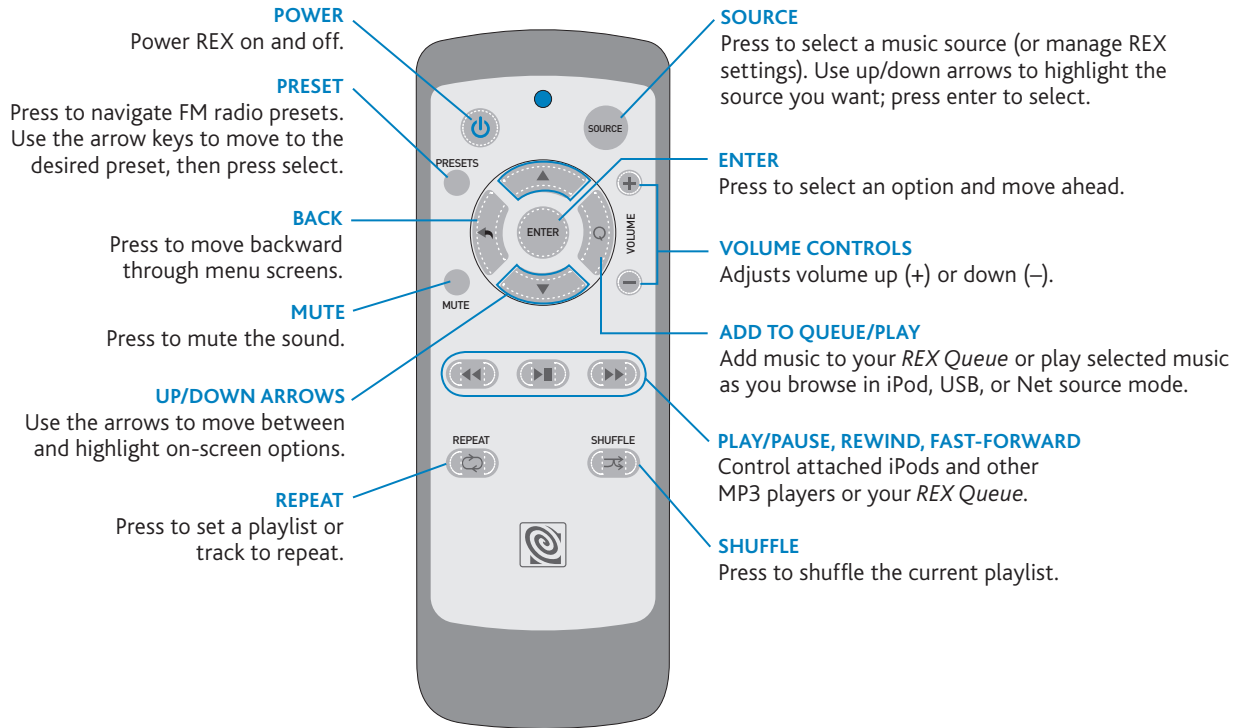
Front Control Panel



Top Control Panel



Controls : Remote Control





Listen to your digital music

FIGURE 1



With REX, your home network can include not just home computers but also iPods and other MP3 players, flash drives, and USB hard drives that are attached to a REX. REX lets you see and listen to the music stored in all these places.

Browsing is the process of navigating these music sources. You browse REX as much as you do an iPod or another MP3 player. As you browse, you can build a *REX Queue* or play albums, existing playlists, tracks sorted by artist or genre, or individual tracks. With REX, the big difference is that you can browse and play all the music on your home network, not just what's on a single device.

Choose a source

To browse for music, select the source you want: **iPod**, **USB**, or **Net** (see *FIGURE 1*). To select a source, press the source button, rotate the clickable knob to highlight the source you want to browse, then press the clickable knob.

Browsing **Net** provides access to the most music. That's because **Net** allows REX to access all the sources on your network, including iPods and other MP3 players attached to other REX units. Choosing Source: **iPod** or Source: **USB** lets you browse only those devices attached directly to the REX you are using at the time.

FIGURE 2

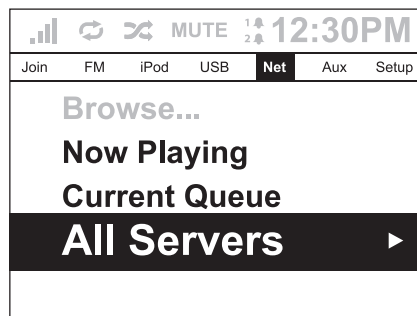
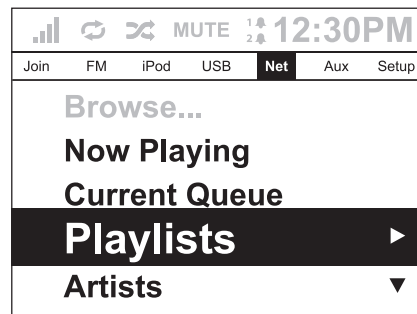


FIGURE 3



Network browsing

When you browse **Net**, what you see on the REX display will depend in part on whether you have set a favorite server in the REX settings.

If you have not set a favorite server, you'll see a screen that looks like *FIGURE 2*. Go to Source: **Net>All Servers** to find the server you want to browse.

If you have set a favorite server, you'll see a screen that looks like *FIGURE 3*. If that server is available on the network, you have immediate access to the music on that server. You can browse by playlists, artists, albums, genres, and tracks. Even if you have set a favorite server, you can always browse other servers on your network by selecting Source: **Net>All Servers**.

Browsing Source: **Net** lets you build a *REX Queue* from different sources throughout your home.

What's a server?

Any computer on your network that holds music files can be used as a server. To browse these sources, media player software must be configured to "share" the music files and the software must be running. Please see your computer's media player software for how to set it to share music.

In addition, you can attach a USB mass storage device to a REX, making a de facto server. To browse such a de facto server, select Source: Net>All Servers. You'll find the USB mass storage device nested under the REX to which it is attached.

FIGURE 4

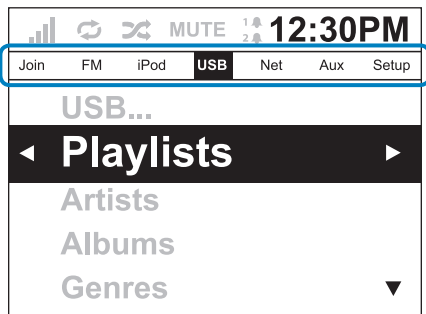
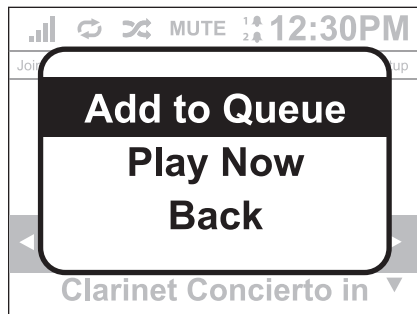


FIGURE 5



When choosing **Add to Queue** on a group of playlists, single playlist or single track, you can add the music to the end of the *REX Queue*, play the music immediately, or go back to the previous listing.

Browse iPod and MP3 players

You can browse the contents of iPods and other MP3 players that are attached to a REX. When these devices are connected to the REX you are using, they show up under Source: **iPod** or Source: **USB** (see **FIGURE 4**).

If they are attached to another REX, you can browse them under Source: **Net>All Servers** nested under the name of the remote REX.

You may notice that you cannot browse an iPod from more than one REX at the same time. If the iPod is in use by the REX to which it is connected, other REXes can't browse or select music from that iPod. However, the remote REX can **Link** to listen to the same music the iPod is already playing. If a REX starts using an iPod to which it is physically attached, while that iPod is in use by a remote REX, the remote REX will lose access to the iPod. This limitation does not apply to MP3 players connected via USB.

Build a REX Queue

As you browse, you can build a *REX Queue* by pressing the add to queue button. You can add albums, all tracks by artist or genre, and individual tracks to the *REX Queue*. Your *REX Queue* can also include playlists you set up on another device. Highlight the item you want to add to your *REX Queue*, then press the add to queue button.

REX will ask if you want to **Play Now** to play the selection or **Add to Queue** to add to the end of your current *REX Queue* (see **FIGURE 5**). Choose **Add to Queue** to add the selection and continue building your *REX Queue*. Choose **Play Now** to empty your *REX Queue* and listen to the selection immediately.

FIGURE 6

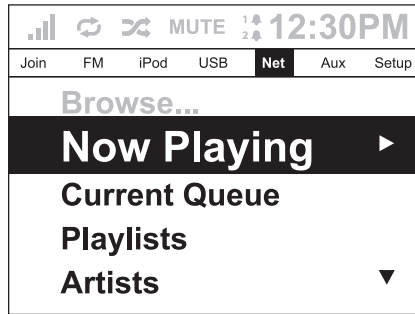
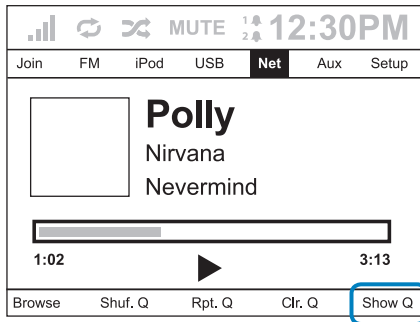


FIGURE 7



- Browse:** Return to Browse mode
- Shuffle:** Shuffle the queue
- Repeat:** Repeat the queue
- Clear:** Clear the queue
- Show:** Show the queue

Once you add at least one item to your *REX Queue*, you can start playing it. To do so, press the PAUSE/PLAY button (II▶). You can continue to browse and add selections to the *REX Queue* while you listen to your music.

Remember, if you choose the **Play Now** option after pressing the add to queue button while browsing, you empty your *REX Queue*, replacing the whole list with the selected item.

Control your REX Queue

You can shuffle, repeat, clear and show your *REX Queue*. To use these controls, select Source: **Net>Now Playing** or Source: **Net>Current Queue** (see *FIGURE 6*). From there, control your playlist using the multifunction keys beneath the display.

To view and scroll through your *REX Queue*, choose Source: **Net>Current Queue** or Source: **Net>Now Playing>Show Q** (see *FIGURE 7*). To jump to a track within the list, highlight the track and press the clickable knob.

BROWSE AND LISTEN

You don't need to build a *REX Queue* to listen to music. You can browse and listen to playlists as well as tracks sorted by album, artist, and genre without building a *REX Queue* first.



Listen to other sources

FIGURE 8

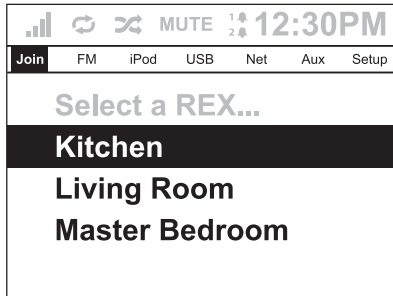


FIGURE 9



Link to another REX

Each REX plays music independently of the others in your home unless you choose to synchronize, or **Link**, them. To synchronize music playback, press the source button and select **Link** (see **FIGURE 8**). Use the clickable knob to highlight and select the REX unit to which you want to link. Now you'll hear the same music that REX is playing, beautifully synchronized. (see **FIGURE 9**).

Having a Party?

Use Source: Link mode to have all your REXes play the same music. It's great for parties or anytime you want to listen to the same music everywhere in the house.

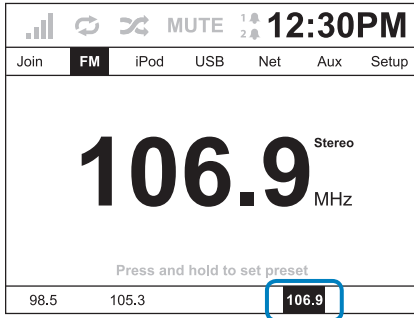
FM Radio

To listen to the FM Radio: Press the source button, highlight **FM** with the clickable knob, then select **FM** by pressing the clickable knob.

TUNING

In **FM** mode, turning the clickable knob tunes the radio. If you press and hold the clickable knob for 3 seconds, the tuner seeks the next strong signal moving up the dial. You can also seek up and down the dial using the fast forward (▶) / rewind (◀) buttons.

FIGURE 10



PRESET STATIONS

You can store up to five preset stations. Use the multifunction keys beneath the display to set and select your presets. Tune to the station you want to save as a preset. Press and hold a multifunction key until the screen flashes. The saved station will appear above the key you selected (see **FIGURE 10**). In the future, just press this key while in **FM** mode to tune to that station.

REMOTE CONTROL RADIO

You may tune the radio to a preset station using the remote. In **FM** mode, press preset button on the remote and use up and down arrows to move to the preset station you want to hear. Then press the enter key to choose.

FIGURE 11



RADIO BROADCAST DATA SYSTEM (RBDS)

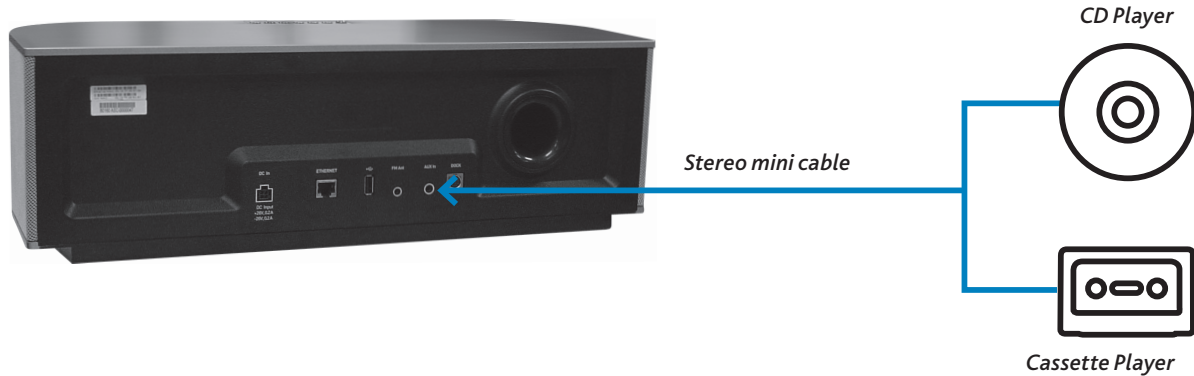
In addition to playing your favorite FM stations, REX receives and displays information that many stations now broadcast about the station and its content. When available, REX will display this information.

AUX

You can connect a variety of analogue audio devices using the 1/8" mini stereo patch cable that comes with REX. Any audio source that has a 1/8" stereo mini jack can be connected to REX. This includes compact CD players and even iPods and other MP3 players that are otherwise not compatible with REX. To control music play back, you must use the controls on the device.

Once connected, select Source: **Aux** to play through REX.

Playing AUX devices through REX



Compatibility

MEDIA PLAYERS

Software known as media players allow digital media to play on your computer. Some media players, such as iTunes and Windows Media Player, also act as “servers” making music files available over your home network. This server feature is what allows REX to find and play music stored on your home computers.

REX works with most widely used media players, including:

- iTunes for Mac, version X and higher
- iTunes for Windows, version X and higher
- Windows Media Player for Windows, version X and higher
- Allegro Media Server for Mac OS X, version X and higher
- Allegro Media Server for Mac OS 9, version X and higher
- Allegro Media Server for Windows, version X and higher

AUDIO FILE TYPE

REX can play music files stored on compatible devices in the following formats:

- AAC (MPEG4)
- ACC DRM (via analogue only)
- Apple Lossless
- WAV-LPCM (uncom-pressed)
- FLAC (lossless)
- Ogg Vorbis
- MP3
- WMA

IPOD

REX is compatible with the following iPod models when connected to them using the optional iPod dock.

- iPod
- Video iPod
- iPod Mini
- iPod Nano
- iPod Shuffle (1GB)

USB MASS STORAGE DEVICE CLASS

REX can play music stored on devices that follow the USB mass storage device class protocols and which meet the USB 2.0 standards. Devices in this category include many MP3 players, flash drives and USB hard drives.

When you connect a compatible MP3 player using a USB cable, you can use REX to control music on that player. The player will also recharge while connected to REX.

ANALOGUE AUDIO SOURCES

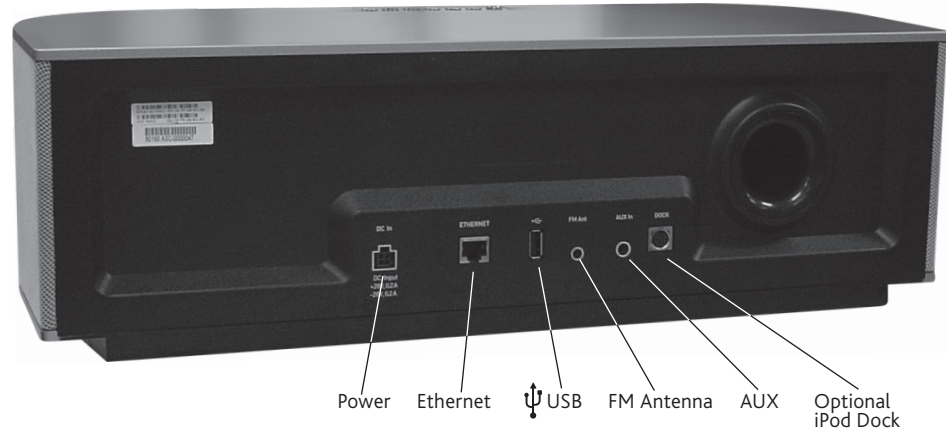
Any audio source that has a 1/8" stereo mini jack can be connected to REX. This includes iPods and other MP3 players that are otherwise not compatible with REX. To control music play back, you must use the controls on the device.

NETWORKING AND SECURITY

The built-in wireless capability of REX is compatible with the 802.11b and 802.11g wireless local area network standards. REX can join networks secured using WEP or WPA protocols. REX can connect to most wired home networks using a standard Ethernet cable.



Connect REX



Your home network

If you have a home network connecting computers to each other, or sharing an Internet connection, REX easily becomes part of that network. REX units have built-in wireless networking capability. If your home network is wireless, REX can connect wirelessly.

You can connect REX to a wired home network using the built-in Ethernet jack and an Ethernet cable. DSL and cable modems often have a built in router, which enables sharing the Internet connection.

If you don't have a separate router, you may be able to connect at the DSL or cable modem. (Check the documentation that came with your router or modem for details.) Do not connect REX directly to a computer.

Some routers allow both wired and wireless connections. These routers include a wireless access point that lets REX connect wirelessly to your network. They also allow wired connections using Ethernet. In this case, you can choose to have a REX connect whichever way is more convenient for you.

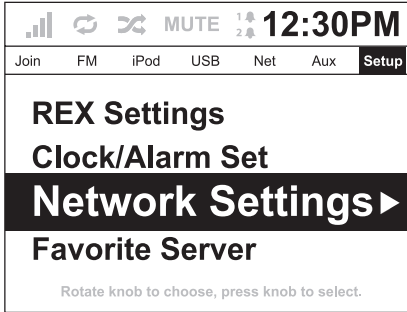
Some popular models of routers with wireless access points include: Linksys® WAP 54G, Netgear® WGR series, and D-Link® AirPlus G.

To access music on a wired network, you must physically connect each REX to your router using Ethernet cable unless your router includes a wireless access point.

CHANGING NETWORK SETTINGS

When you first set up REX, REX establishes network connections as part of the set-up wizard. You can turn the network connection off and on and view, edit, and test the settings manually. Select Source: **Setup>Network Settings** (see *FIGURE 12*).

FIGURE 12

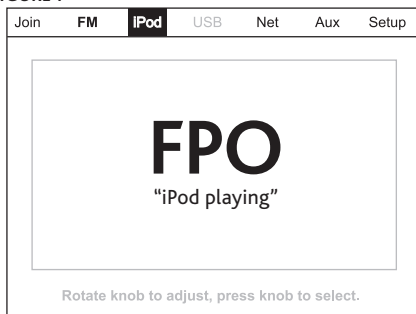


iPod Dock: Sold Separately

iPod

While it is OK to connect an iPod to REX via USB, the USB connection only allows REX to play music files that were copied to the iPod in "disk mode." When connected to an iPod by USB, REX can't play music that was loaded on that iPod using iTunes. This is because the iPod uses a proprietary format for managing music. The optional REX iPod dock provides full functionality and serves as a charging stand. Visit your REX dealer or www.alteclansing.com to purchase an iPod dock for REX.

FIGURE 1



When you connect an iPod to a REX via the optional iPod dock, music files on the iPod can be selected and played on that REX. Other REX units browsing in **Net mode** may also select and play music from that iPod. If the iPod is in use by the REX to which it is connected, the iPod files may not be available to other REXes.

While connected to REX, your iPod battery recharges. (Rex must be connected to power.)

Cataloguing

REX automatically catalogues music files stored on computers and MP3 players that are connected to your home network or a REX. During cataloguing, you can't listen to music from the device. The catalogue of contents allows faster browsing from REX. A record of the catalogue is left on computers and non-iPod MP3 players for REX to reference when you browse for music.

USB

You can connect a variety of music storage devices to REX via USB. Most USB mass storage devices will work with REX. Included in this class are iPods and other MP3 players, flash drives, and USB hard drives. You can listen to music files stored on these kinds of devices on a REX. On the REX to which they are physically connected, select Source: **Net** or Source: **USB** to browse these devices. From a networked REX, you can browse these devices from Source: **Net**.

AUX

You can connect most portable audio players to REX using the AUX stereo mini jack on the back of REX. For example, you may connect from the headphone jack of a portable CD player to the AUX stereo mini jack on the REX.

Power supply

REX connects to AC power using an external power supply. When you disconnect REX from power, the REX settings are saved. However, the contents of your *REX Queue* will be lost.

Ethernet

You can connect REX to your wired home network using the built-in Ethernet jack and an Ethernet cable. Connect to your network through a router. Do not connect REX directly to a computer

FM antenna

REX comes with an external FM antenna to enhance reception.

Headphones

REX has a headphone jack on the front near the clickable knob. Plugging in headphones will shut off the sound to the speakers.





Set up + software



Set-up Wizard Welcome Screen

FIGURE 13



Set-up wizard

Before you can listen to music, REX needs to learn about you and your home network. When you first connect a REX to power, a set-up wizard automatically begins. The wizard guides you through the set-up process. During set-up, REX collects information about other REX devices, your home network, and your preferences. It takes only a few minutes to complete set up and start listening to music.

The wizard lets you skip steps in the set-up process. If you choose to skip steps, you may not be able to use all the capabilities of REX until you input the settings manually at a later time.

BEFORE YOU START

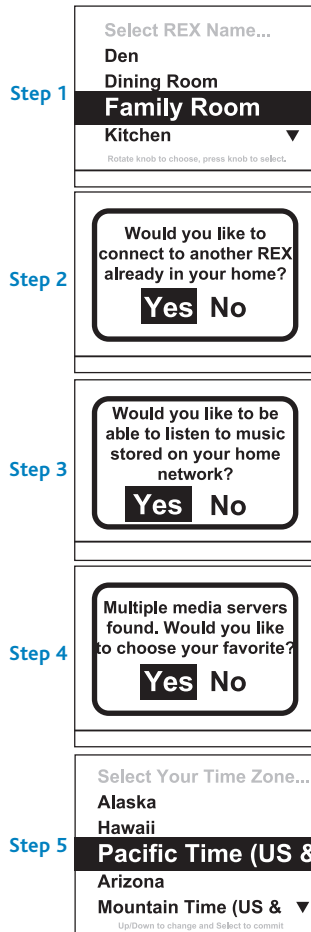
Before using the set-up wizard to guide you through set up, a bit of preparation is helpful.

- If REX will use a wired connection to your network, connect REX to the network router with an Ethernet cable.
- If you have a wireless network, make sure your router is turned on.
- Share the media player software on the home computer you will most often use to access music.

ADDITIONAL REXES

Setting up an additional REX is even easier than setting up the first. Additional units will copy most of their settings from a REX you've already set up. You'll just need to name the additional unit and allow it to be "discovered" by another REX (see **FIGURE 13**). For this reason, don't run the set-up wizard on more than one REX at a time.

If you're setting up more than one REX, don't worry about which one to set up first. It doesn't matter—pick one and get started.



CONNECT REX TO POWER

Connect REX to the external power supply and connect the power supply to an electrical outlet.

SET-UP CONTROLS

To set up REX, you'll use two simple REX controls: the clickable knob and the back button. Just rotate the clickable knob to highlight an on-screen option. Press the knob to select an option and move ahead. To move back, or cancel out of an option, press the back button.

Set-up Steps

- Step 1. Name the REX
- Step 2. Connect to another REX
- Step 3. Connect to home network
- Step 4. Set favorite server
- Step 5. Set date and time

COPY SETTINGS FROM ANOTHER REX

When you set up an additional REX, you'll be asked to have an existing REX "discover" the new one. This lets the new REX copy settings. When prompted, go to any other REX that you've already set up. Press the two far left multifunction keys at the same time. Hold them down until the REX enters **Discovery** mode, about 3 seconds.

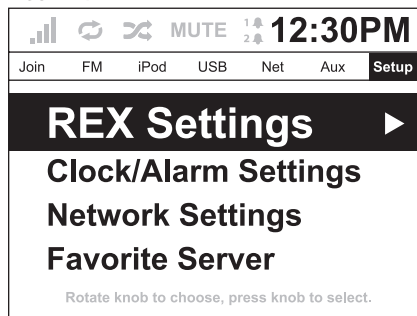
SAVE YOUR SETTINGS

After you complete the set-up wizard, REX saves your settings even if you unplug the unit. If you unplug a REX unit prior to completing the wizard, however, REX erases the settings from memory. If you want to erase your settings and restart the wizard from the beginning, just unplug the unit before you complete the wizard.

CHANGE YOUR SETTINGS

You can always change settings after set up. Select Source: **Setup** to manage your settings.

FIGURE 14



Manage settings

After initial set up, you can view and change settings on REX in **Setup** mode. Press the source button and use the clickable knob to select **Setup**. In **Setup** mode, you can select one of four submenus: **REX Settings**, **Clock/Alarm Settings**, **Network Settings**, and **Favorite Server** (see *FIGURE 14*).

REX SETTINGS

Select REX Settings to:

- View the unit's name
- Change the unit's name
- Change the Stand By brightness level
- Change the Power On brightness level
- View the unit's current software version

CLOCK/ALARM SETTINGS

Select Clock/Alarm Settings to:

- Set Alarm 1
- Set Alarm 2
- Change the default sleep-timer period
- Choose between network time or manual time
- Set the current time manually
- Set the current date manually
- Change the daylight saving time observance period
- Change the unit's time zone
- Set the time format (12/24 hour)
- Set the date format (M/D/Y or D/M/Y)

FIGURE 14

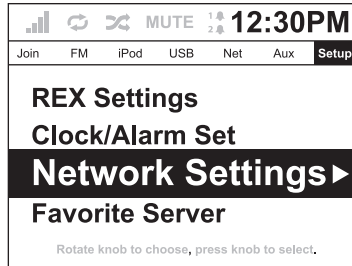


FIGURE 15

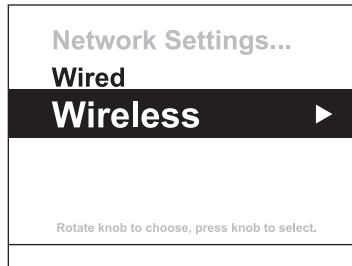
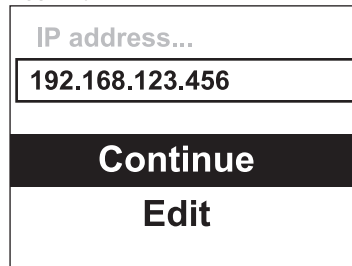


FIGURE 16



NETWORK SETTINGS

If you prefer to set network settings manually or have special requirements, select Source: **Setup>Network Settings>Wired** or Source: **Setup>Network Settings>Wireless** (see *FIGURE 14* and *FIGURE 15*). From there, you can view, change, and test those settings and turn the network connection on or off.

Within **Network Settings**, you can manually configure IP and subnet addresses, enter the name of "hidden" wireless networks, and input passwords (see *FIGURE 16*). You enter addresses and names using the clickable knob to select characters from the on-screen text input wheel.

FAVORITE SERVER

Select Source: **Setup>Favorite Server** to view your current favorite server, if one is selected, or choose a favorite.

By setting a favorite server you create a short cut to that server when browsing in **Net** mode. You can always browse other servers on your network by selecting Source: **Net>All Servers**.

Media player software

Music files stored on your computer hard drive are accessed by REX in a client-server arrangement. REX is the “client” that is “served” music from the computer. For REX to access music stored on a computer on your network, that computer must have media player software installed, running, and configured to share that music.

REX works with any UPnP media server. The two most common media player programs for music in use today are iTunes® and Windows Media Player®. See the REX home page at www.alteclansing.com for information on media player software and REX .

Automatic updates

To keep REX up-to-date, new software will become available for REX periodically. These software updates will add new capabilities and address changes in media player software, security, and other aspects of the networked computing environment.

When REX is connected to the Internet though your home network, software updates take place automatically, at a time when REX is unlikely to be in use. You will see a message on the REX display telling you a software update is in progress. During the update, music cannot play and the REX controls are disabled. Updates usually take 30 minutes or less. At the end of the update, REX will automatically shut down, restart, and let you know that an update has taken place.

For information on the latest updates and documentation describing new functions, visit the REX home page at www.alteclansing.com.



Clock, alarm + sleep features

FIGURE 13



When not Powered On, REX is in **Stand By** mode and displays a digital clock. You can set the clock's alarm to start playing music at a specified time. And you can set a sleep timer to shut music off after a specified time period.

Clock and alarm settings

You can get to the clock settings two ways. When REX is powered on, you can select Source: **Setup>Clock/Alarm**. Alternatively, when REX is in **Stand By** mode, you can use the multifunction keys. In **Stand By** mode, REX displays the current time and date and offers three multifunction key options: **Alarm 1**, **Alarm 2**, and **Set Clock** (see *FIGURE 13*). To select an option, press the appropriate key.

FIGURE 14



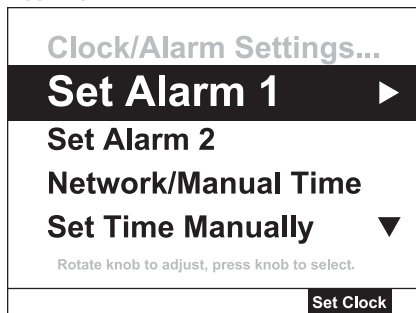
Alarm 1 / Alarm 2

The alarm settings allow you to select music for the alarm, set the alarm time and volume, schedule alarms to repeat, and turn alarms on and off. You can set your alarms to play FM radio or music from an iPod, another MP3 player, or your network (see *FIGURE 14*). Or you can select the alarm chime.

When the alarm sounds, it can be "snoozed" or dismissed. To snooze the alarm, just press the clickable knob. To dismiss the alarm, press the power button. If you rotate the clickable knob or press other buttons, REX will dismiss the alarm and remain powered on so you can continue to listen to your music.

After you dismiss an alarm, it is ready to repeat at the next scheduled setting.

FIGURE 15



Set Clock mode

To access a menu of clock-related settings, press the multifunction key for **Set Clock**. Use the clickable knob to highlight and select an item to edit.

Sleep timer

You can set REX to stop playing music automatically using the sleep timer. To set the sleep timer, press the power button. Your music will stop playing. Use the clickable knob to select the **Sleep-timer** option and set a time period. Your music will resume playing and continue to play for the period of time you selected.

You can also enter the sleep-timer menu by using the multifunction key to select **Set Clock** in **Stand By** mode.



Getting Help

Frequently asked questions

Q: Can I find more information about REX online?

A: Yes. Visit the REX home page at www.alteclansing.com

Q: REX is connected to my home network but doesn't see the computer that holds my music. What should I do?

A: Media player software must be installed and configured to "share" content. Check the status of your media player software. Also, if a firewall is installed on that computer, the firewall could be preventing REX from accessing the computer. Check the firewall settings and follow the manufacturer's instructions for providing access to each REX.

Q: I attached an MP3 player to REX, but I can't listen to the music. Why?

A: REX may be cataloging the music files on that MP3 player. Until cataloging is complete, you won't be able to listen to the music.

Q: Can I adjust the REX display?

A: You can adjust the brightness of the display. There are two separate settings. One setting controls the brightness of the display in Stand By mode. The other setting, called Power On Brightness, controls the brightness of all other screens. Both settings can be found under Source: **Setup>REX Settings**. You can also adjust **Stand By Brightness** by selecting **Set Clock** using the multifunction keys while in **Stand By** mode.

Q: I made changes to my home network. Now REX can't connect. How do I update settings on REX?

A: You need to edit the REX settings to reflect the changes you made to your home network. Select Source: **Network Settings>Wired** or Source: **Network Settings>Wireless** to edit the settings. Within **Network Settings**, you can manually configure IP and subnet addresses, enter the name of "hidden" wireless networks, and input passwords. You enter addresses and names using the clickable knob to select characters from the on-screen text input tool.

Q: I have a "hidden" wireless network that REX can't find. How can I set up REX to connect to my network?

A: You can manually enter the name of a hidden network. Select **Enter SSID Manually** from the bottom of the list of networks that REX can see. You'll see this list as you move through the set-up wizard. If you've already completed the set-up wizard, choose Source: **Setup>Network Settings>Wireless>Edit Settings** to find this option. You'll use the on-screen text input wheel to enter the name of your network.

Q: My network uses static IP configuration. Can I assign a static IP address to REX?

A: Yes, but you can't do it during the set-up wizard. The set-up wizard will use DHCP to assign an IP address. After the wizard is complete, choose Source: **Setup>Network Settings**. From there, you can edit the IP settings in wired and wireless networks. Note, if you set up another REX after setting a static IP address, that address will be copied to the second REX. This will trigger an error message during the wizard. After the wizard is complete, you must manually configure the IP address.

Q: Lorem ipsum dolor sit amet, consectetur adipiscing elit.

A: Lorem ipsum dolor sit amet, consectetur adipiscing elit. Praesent justo. Sed pretium vulputate justo. Etiam viverra lorem et tortor. Donec consectetur egestas odio. Aenean nisi nisi, commodo vel, ultricies eu, commodo sit amet, lacus. Ut ultrices, felis a faucibus porttitor, felis neque tempor justo, ut aliquet urna orci et diam.

Q: Lorem ipsum dolor sit amet, consectetur adipiscing elit.

A: Lorem ipsum dolor sit amet, consectetur adipiscing elit. Praesent justo. Sed pretium vulputate justo. Etiam viverra lorem et tortor. Donec consectetur egestas odio. Aenean nisi nisi, commodo vel, ultricies eu, commodo sit amet, lacus. Ut ultrices, felis a faucibus porttitor, felis neque tempor justo, ut aliquet urna orci et diam.

Q: Lorem ipsum dolor sit amet, consectetur adipiscing elit.

A: Lorem ipsum dolor sit amet, consectetur adipiscing elit. Praesent justo. Sed pretium vulputate justo. Etiam viverra lorem et tortor. Donec consectetur egestas odio. Aenean nisi nisi, commodo vel, ultricies eu, commodo sit amet, lacus. Ut ultrices, felis a faucibus porttitor, felis neque tempor justo, ut aliquet urna orci et diam. Sed non nisl ac neque dapibus euismod. Aenean quis nibh. Mauris volutpat, augue non fermentum placerat, mi est dignissim dolor, ac blandit mauris eros sed augue.

Q: Lorem ipsum dolor sit amet, consectetur adipiscing elit.

A: Lorem ipsum dolor sit amet, consectetur adipiscing elit. Praesent justo. Sed pretium vulputate justo. Etiam viverra lorem et tortor. Donec consectetur egestas odio. Aenean nisi nisi, commodo vel, ultricies eu, commodo sit amet, lacus. Ut ultrices, felis a faucibus porttitor, felis neque tempor justo, ut aliquet urna orci et diam. Sed non nisl ac neque dapibus euismod.

Technical Support

For online information, visit www.domain.com. To speak with a customer service representative, call 1-800-xxx-xxxx.

Glossary

Browsing

Browsing is the process of navigating lists of music available on your home network. Browsing on a REX is much the same as on an MP3 player. A big difference is that you'll usually have a lot more choice of music because REX lets you browse all the music available on your home network.

Clickable knob

The clickable knob is the large knob centered under the REX display. It has two related functions. By turning the knob, you navigate menus on the REX display. By pressing the knob, you select the currently highlighted option and more forward. The clickable knob also adjusts volume when in **Now Playing** mode.

Digital music libraries

Music files stored on computers and USB mass storage devices are organized into music libraries that you can browse from REX or from other devices.

Favorite Server

REX lets you set a favorite server. If you select one, you'll be given a short cut to that server when you browse for music in **Net**.

Home network

Home networks are local area networks (LANs) that allow home computers to share files, printers, and an Internet connection. Other devices, such as REX, may be connected to a home network. Home networks are either wired or wireless, although some wired networks provide wireless bridging to allow a wireless connection. Typically, a router is used to allow the necessary interconnections to form the network.

iPod

The iPod is the popular MP3 player from Apple. This manual makes a distinction between iPod and other MP3 players. This is because the iPod uses a proprietary standard for managing and playing music files. For this reason, REX connects to and interacts with iPod differently than other MP3 players.

Link

If you select Source: **Link**, you can listen to the same music that is playing on another REX in your home. This is a great feature for parties or anytime you want to listen to the same music wherever you are at home.

Media player software

Software that allows digital media to play on a computer. Some media players, such as iTunes and Windows Media Player, also act as “servers” by making music files available to REX and other devices over your home network.

MP3 player

MP3 players are hand-held music players that store, manage, and play digital music files. The best known MP3 player is the iPod, but there are many competing players on the market. MP3 players are named after the well known music-file format but they usually handle a variety of file formats.

Now Playing mode

Now Playing mode is the default mode for a REX that is playing music. If you are browsing or viewing the **Current Queue** while listening to music, the display will default to **Now Playing** after a period of inactivity. In **Now Playing** mode, the display shows the current track, artist, album, album art, and a playback progress bar. You can select **Now Playing** mode while browsing or viewing the **Current Queue**.

Playlist

A list of tracks organized for playback is a common feature of digital media players and MP3 players. REX will recognize and follow these playlists when you select them for playback. You can also build a REX-specific playlist called the *REX Queue*.

Power On/Off

From **Stand By** mode, REX must be Powered On to play music. To stop playing music and return to **Stand By** mode, the unit must be Powered Off. To Power On (or Off), press the power button.

REX Queue

Using REX, you can build a REX-specific playlist of music files. Your *REX Queue* is stored in the REX memory until you clear it or until the REX is disconnected from power. The REX-specific playlist is different from playlists that you create using media player software, an iPod, or another MP3 player. However, REX can play music using those playlists, too.

Stand By mode

Stand By is the default mode for a REX when attached to power. In **Stand By** mode, the display serves as a digital clock. To leave **Stand By** mode and listen to music, Power On the unit by pressing the power or source button. To return to **Stand By** mode, Power Off the unit by pressing the power button.

SSID

A service set identifier (SSID) is a unique alphanumeric code that serves as the name for a wireless local area network. The SSID is used by each device that is part of the network to facilitate the exchange of data over the network.

USB mass storage devices

USB mass storage devices can store digital data and, in the case of MP3 players, sort and play music files. This class of device includes MP3 players, flash drives, and USB hard drives.

Technical specifications

Audio drivers	Two 4" low-frequency to mid-range drivers Two 1" soft-dome tweeters
Base enhancement	<<<TBD>>>
Ethernet	RJ-45, 100BASE-T, 100 megabits per second
FAT 12	Not supported
FAT 16	Supported
FAT 32	Supported
DLNA Interoperability Guidelines	Compliant
Universal Plug and Play (UPnP)	Compliant
Wireless networking	Compatible with 802.11b and 802.11g standards



