

headsets LED will flash red and blue alternately indicating that it has entered pairing mode. The headset will remain in pairing mode for three minutes.

- Make sure the Bluetooth audio adapter is off. Press and hold the multi-function button on the adapter until the LED flashes red and blue alternately. This indicates that the adapter has entered pairing mode, which will last for three minutes.
- Place the Bluetooth audio adapter and the headset next to each other. After a few seconds the LED's on both devices will flash blue.
- Connect the jack of the audio adapter to the 3.5mm headphone socket of any audio source such as your MP3 player, CD player etc. You are now set up for wirelessly listening to your music from that device.

After the initial pairing the devices will recognize each other every time you turn them on in proximity with each other. You only need to repeat the pairing process if you paired the devices with other Bluetooth products since the last use of the headset with the Bluetooth audio adapter.

For Bluetooth enabled audio players or Bluetooth Adapters that are not part of the sales package please refer to the manufacturers user manual for the pairing process. Typically the process will be similar as described above for mobile phones.

## Use your headset with your mobile phone and audio player simultaneously

If your phone does not support the A2DP profile for stereo streaming you can still enjoy the convenience of listening to music and monitoring your calls from one headset. To do so:

1. Pair the headset with the mobile phone as described in "Use your headset with a mobile phone".
2. Pair the headset with your Bluetooth enabled music player or Bluetooth audio adapter.
3. You can now listen to music from your audio player and pick up incoming calls by simply pressing the multi-function button. After ending the call your music will resume within a few seconds.

## Use your headset with your PC

You can use a USB Bluetooth adapter to add Bluetooth functionality to your PC and use your Philips headset for VoIP chat, gaming or video and music entertainment. Please refer to the USB adapters user guide for detailed instructions on setting up and using the headset with the PC. If prompted for a PIN code, please use "0000" (4 zeros).

## Control your music

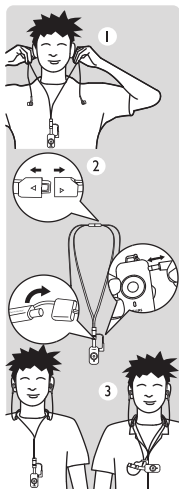
To adjust the volume of music use the **VOL +** and **VOL -** key on your Bluetooth headset.

The following functions are only supported with devices that support the Audio Video Remote Control Profile (AVRCP) such as Bluetooth enabled PC's, typical Bluetooth stereo enabled mobile phones and many non-3.5mm proprietary Bluetooth audio adapters. Universal 3.5mm Bluetooth audio adapters will not support these features.

- To stop music playing press the multi function button for 2 seconds, to pause tap the multi function button briefly.
- To skip forward to the next song press the skip forward button. Pressing the skip backward button once will take you to the beginning of the current song, pressing it twice will take you to the beginning of the previous song.

# Wearing your headset

EN



Use the included neck strap to wear the Philips Bluetooth stereo headset around your neck. If you prefer using another headphone you can disconnect the neck strap at the twist-and-release clip and plug in your choice of headphone in the 3.5 mm headphone jack. The microphone is integrated in the pendant, so you will still be able to lead wireless communications with our headset.

To personalize the fit of your headset choose one of the 3 included ear bud caps that fit your ear best. The ear bud caps will give you lasting wearing comfort and also block out background noise, providing a premium music experience.

If you bought the SHB7102 with the included Bluetooth audio adapter you can use the included stretch-pouch to attach the audio adapter to your music player for portable use.

## Specifications

- Up to 10 hours of talk time or 8 hours of continuous music listening
- Up to 210 hours of standby time
- Typical time for a full charge: 3 hours
- Rechargeable Li-Po battery
- Operating range up to 33 feet (10 meters)
- Bluetooth 1.2, Bluetooth stereo (A2DP – Advanced Audio Distribution Profile) support, Audio Video Remote Control Profile support (AVRCP), Headset (HSP) and Handset Profile (HSP) support.

- TailorMate: Personalized fit and flexibility to use your own headphones
- Switchstream: Switch between music and calls
- Music control buttons

## Health and safety

Using this headset with both ear buds inserted may be illegal in some countries while driving. For your safety avoid distractions from music or phone calls while in traffic or other potentially dangerous environments.

Using this headset continuously at full volume may damage your hearing

# Troubleshooting

EN

<i>Problem</i>	<i>Possible cause</i>	<i>Solution</i>
<i>Bluetooth headset does not switch on.</i>	<i>Battery is very low.</i>	<i>Charge your Bluetooth headset.</i>
<i>No connection to mobile phone.</i>	<i>Bluetooth disabled.</i>	<i>Enable Bluetooth on your mobile phone and turn the headset on.</i>
<i>Mobile phone cannot find headset</i>	<i>Headset may not be in pairing mode. (Pairing mode lasts for 3 min.)</i>	<i>Put your headset in pairing mode as described.</i>
	<i>Pairings may have been reset or headset has been previously paired with other device.</i>	<i>Start the pairing process as describe above.</i>
<i>Redialing does not work.</i>	<i>Your mobile phone may not support this feature.</i>	
<i>Voice dialing does not work.</i>	<i>Your mobile phone may not support this feature.</i>	
<i>The headset is connected to the Bluetooth stereo enabled phone, but music will play on phone only.</i>	<i>Phone may have option to listen to music via speaker or headset.</i>	<i>Check your phones user guide on how to transfer the music to the headset. ("A/V headset, A2DP headset, Bluetooth Stereo headset" etc.)</i>
<i>Audio quality when streaming from phone is very low.</i>	<i>Phone may not be A2DP compatible and only support (mono) HSP/HFP.</i>	<i>Check your phones compatibility.</i>

Please visit [www.philips.com/support](http://www.philips.com/support) for additional support.

## Federal Communication Commission Interference Statement

This device complies with Part 15 of the FCC Rules. Operation is subject to the following two conditions: (1) this device may not cause harmful interference, and (2) this device must accept any interference received, including interference that may cause undesired operation.

This equipment has been tested and found to comply with the limits for a Class B digital device, pursuant to Part 15 of the FCC Rules. These limits are designed to provide reasonable protection against harmful interference in a residential installation. This equipment generates, uses and can radiate radio frequency energy and, if not installed and used in accordance with the instructions, may cause harmful interference to radio communications. However, there is no guarantee that interference will not occur in a particular installation. If this equipment does cause harmful interference to radio or television reception, which can be determined by turning the equipment off and on, the user is encouraged to try to correct the interference by one or more of the following measures:

- Reorient or relocate the receiving antenna.
- Increase the separation between the equipment and receiver.
- Connect the equipment into an outlet on a circuit different from that to which the receiver is connected.
- Consult the dealer or an experienced radio/TV technician for help.

**Warning:** Changes or modifications made to this equipment not expressly approved by Philips may void the FCC authorization to operate this equipment.

### **IMPORTANT NOTE:**

**FCC Radiation Exposure Statement:**

This equipment complies with FCC radiation exposure limits set forth for an uncontrolled environment. End users must follow the specific operating instructions for satisfying RF exposure compliance.

This transmitter must not be co-located or operating in conjunction with any other antenna or transmitter.

### **Trademarks**

The Bluetooth word mark and logos are owned by the Bluetooth SIG, Inc. and any use of such marks by Koninklijke Philips Electronics N.V. is under license. Other trademarks and trade names are those of their respective owners.