



Need help?

User Manual

See the user manual that came with your **Wireless Music Adapter**.

Online help: www.philips.com/support

For downloads and frequently asked questions

Contact line:

USA..... I-888-PHILIPS (744-5477)



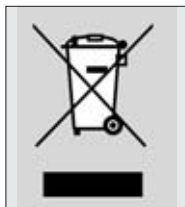
Information to the Consumer

Disposal of your old product

Your product is designed and manufactured with high quality materials and components, which can be recycled and reused.

When this crossed-out wheeled bin symbol is attached to a product it means the product is covered by the European Directive 2002/96/EC.

Please inform yourself about the local separate collection system for electrical and electronic products.



Please act according to your local rules and do not dispose of your old products with your normal household waste. The correct disposal of your old product will help prevent potential negative consequences for the environment and human health.




Contents

3	Contents
4	Important information
4	Safety precautions
5	Statements
5	Microsoft disclaimer
6	What's in the box
7	System requirements
8	Functional overview
11	Navigating the menu
13	Preparing Your PC
13	Installing Philips Media Manager
14	Installing the Philips Wireless Music Adapter PC Utility
18	Installing your SLA5520
19	Configuration
20	Configuration Wizard Menu
21	Changing network settings
23	Operation
23	Listening to Internet Radio
24	Listening to Music Files
27	Saving Favorite Music Items
29	Advanced Configuration
29	Configuration Menu Structure
31	Managing Network Profiles
32	Managing Multiple Key Indexes
34	Updating the Radio List
36	Advanced Configuration Using Philips Wireless Music Adapter PC Utility
37	Default Profile Settings
38	Uploading New Software to the SLA5520
40	Troubleshooting
43	Glossary
44	Extra information
45	Guarantee

Important information

- A 802.11b/g compatible wireless network adapter or a wireless base station is required when integrating your SLA5520 in a wireless computer network.
- Please install and connect the product in the order described in this manual only. This assures best installation results with the least technical hassles.
- Please read this guide carefully before using your SLA5520 and keep it for future reference.
- The most recent downloads and information on this product will be available through our website www.philips.com/support.
- Broadband Internet access (min. 256 kbps) is required if you want to use the Internet functions of the SLA5520.
- Please check whether your Internet service provider charges extra fees for exceeding a certain limit of transferred data. When using Internet media services on a daily basis, you may exceed such a limit. *For example:*
When you listen to Internet radio (at 64 kbps) for about 36 hours, 1 GB (gigabyte) of data will be transferred to your streamium system.
- During set-up and installation, it may be helpful to have the instructions for your audio system, wireless base station or other wireless network components at hand.

Safety Precautions

- NEVER MAKE OR CHANGE CONNECTIONS WITH THE POWER SWITCHED ON.
- Before operating the system, check that the operating voltage indicated on the nameplate of your system is identical with the voltage of your local power supply. If not, please consult your dealer.
- Radio equipment for wireless applications is not protected against disturbance from other radio services.
- The product should not be exposed to liquids.
No object filled with liquids, such as vases, or beverage containers should be placed on the product.
- Do not expose the system to excessive moisture, rain, sand or heat sources caused by heating equipment or direct sunlight. 
- Allow a sufficient amount of free space all around your SLA5520 for adequate ventilation.
- Do not open this product. Contact your Philips retailer if you experience technical difficulties.
- Place the system on a flat, hard and stable surface. When the system is switched to standby mode, it is still consuming some power. To disconnect the system from the power supply completely, remove the AC power plug from the wall socket.
- Make sure the air around your SLA5520 can circulate to prevent your SLA5520 from overheating internally. Also, avoid putting any heat sources (e.g. a power amplifier) underneath.
- To prevent your SLA5520 from overheating internally, never place anything on top of it.

Statements (U.S.A. only)

- This equipment has been tested and found to comply with the limits for a Class B digital device, pursuant to Part 15 of the FCC Rules. These limits are designed to provide reasonable protection against harmful interference in a residential installation. This equipment generates, uses and can radiate radio frequency energy and, if not installed and used in accordance with the instructions, may cause harmful interference to radio communications. However, there is no guarantee that interference will not occur in a particular installation. If this equipment does cause harmful interference to radio or television reception, which can be determined by turning the equipment off and on, the user is encouraged to try to correct the interference by one or more of the following measures:
 - Reorient or relocate the receiving antenna.
 - Increase the separation between the equipment and receiver.
 - Connect the equipment into an outlet on a circuit different from that to which the receiver is connected.
 - Consult the dealer or an experienced radio/TV technician for help.
- This device complies with Part 15 of the FCC Rules and with RSS-210 of Industry Canada. Operation is subject to the following two conditions:
 - 1) this device may not cause harmful interference, and
 - 2) this device must accept any interference received, including interference that may cause undesired operation.
- The user's manual or instruction manual for an intentional or unintentional radiator shall caution the user that changes or modifications not expressly approved by the party responsible for compliance could void the user's authority to operate the equipment.
Example:
Warning: Changes or modifications made to this equipment not expressly approved by Philips may void the FCC authorization to operate this equipment.

IMPORTANT NOTE: FCC Radiation Exposure Statement:

This equipment complies with FCC radiation exposure limits set forth for an uncontrolled environment. This equipment should be installed and operated with minimum distance 20 cm between the radiator and your body. This transmitter must not be co-located or operating in conjunction with any other antenna or transmitter.

– The FCC ID of the equipment is: OYMSLA5520;

– The IC of the equipment is: I35M-SLA5520

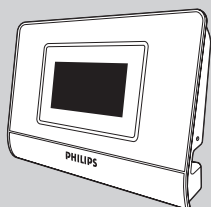
Microsoft disclaimer

This product is protected by certain intellectual property rights of Microsoft Corporation. Use or distribution of such technology outside of this product is prohibited without a license from Microsoft or an authorized Microsoft subsidiary.'

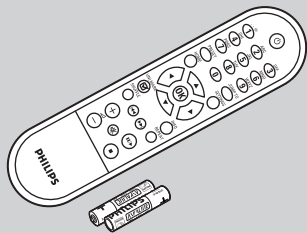
'Content providers are using the digital rights management technology for Windows Media contained in this device ('WM-DRM') to protect the integrity of their content ('Secure Content') so that their intellectual property, including copyright, in such content is not misappropriated. This device uses WM-DRM software to play Secure Content ('WM-DRM Software'). If the security of the WM-DRM Software in this device has been compromised, owners of Secure Content ('Secure Content Owners') may request that Microsoft revoke the WM-DRM Software's right to acquire new licenses to copy, display and/or play Secure Content. Revocation does not alter the WM-DRM Software's ability to play unprotected content. A list of revoked WM-DRM Software is sent to your device whenever you download a license for Secure Content from the Internet or from a PC. Microsoft may, in conjunction with such license, also download revocation lists onto your device on behalf of Secure Content Owners.'

What's in the box

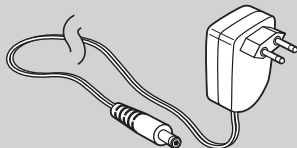
Please check whether the following items are present in the box of the **Wireless Music Adapter**. They are provided to help you set up and use your SLA5520.



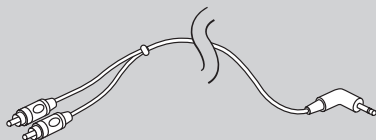
SLA5520 **Wireless Music Adapter**



Remote control including batteries (2x AAA)



Power adapter (110V or 200-240V) including cable adapter and power cable

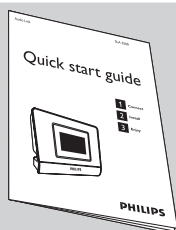


Stereo RCA to 1/8" connector cable



CD-ROM containing:

- This User manual
- Philips Media Manager software
- **Wireless Music Adapter** PC Utility



Quick start guide


Audio

Audio system (e.g. amplifier, VCR, DVD etc) with auxiliary (AUX) inputs (RCA connection) or an active speaker system


Personal Computer (PC)

- Pentium Class 500MHz processor or better
- 128 MB RAM
- 150 MB free hard drive space
- CD-ROM drive
- Windows® 2000, Windows® XP or Windows® XP Professional
- Microsoft Internet Explorer 5.0 or later
- Wireless or Ethernet network interface card, installed and configured with TCP/IP

Playback of DRM protected content requires

- Pentium III, 1 GHz with 256 MB 
- Windows® XP and Service Pack 2
- CD/DVD drive
- 200 MB free hard drive space

Network

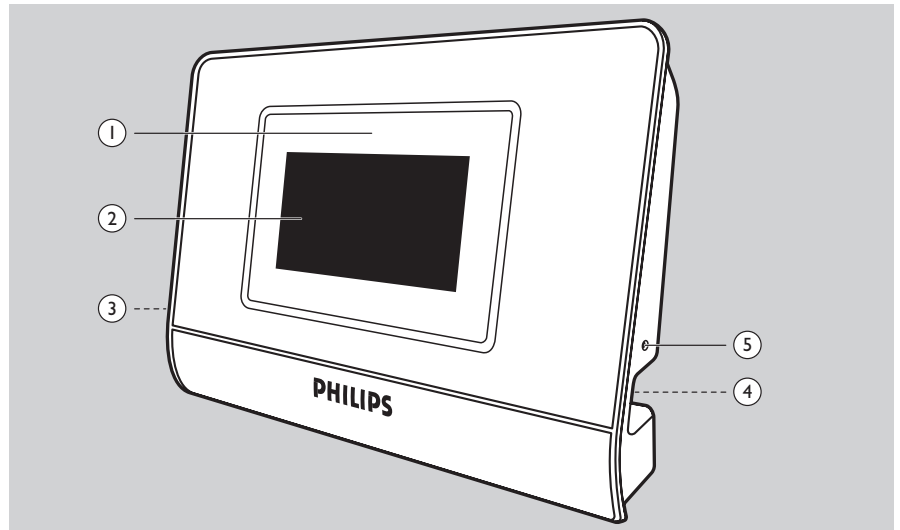
- Wireless connection (WiFi 802.11b/g compatible) from the **Wireless Music Adapter** to a PC, base station or both. 

Network Environments Supported

<i>Network Environment</i>	<i>Description</i>
Infrastructure	<ul style="list-style-type: none">• Wireless Base station (BS) Commonly this is called a wireless router.• PC with connection to base station• SLA5520 connects wirelessly to BS
Peer-to-peer (Ad Hoc)	<ul style="list-style-type: none">• No Wireless Base station (BS)• PC with wireless card• Wireless Music Adapter connects wirelessly to PC• PC with wired connection to the Internet (with Internet Sharing enabled)

Functional overview

Wireless Music Adapter



1 Infrared sensor

Receives the signals from the remote control

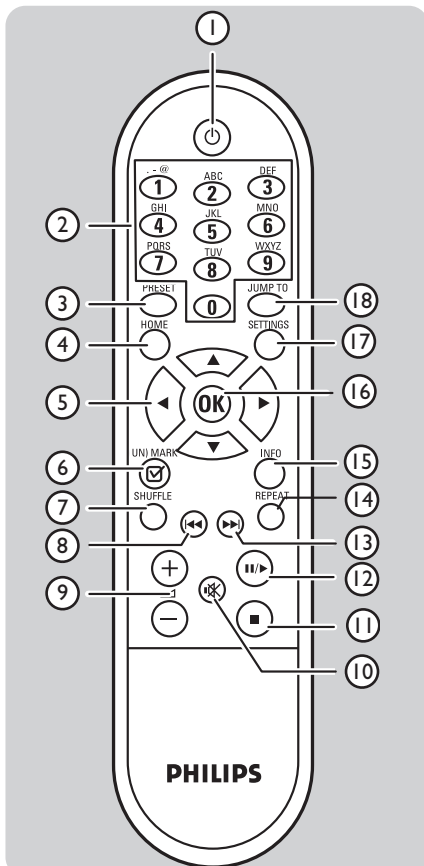
2 LCD screen

Displays menu status for easy navigation through music library and system settings

3 Stereo 1/8" connector cable socket

4 Power adapter cable socket

5 Reset hole



Remote Control

1 (On/Standby)

Turns on the **Wireless Music Adapter**.

Pressing the button again turns the device off (the device is then in 'standby mode').

2 0-9 digit buttons

Play the item stored on the preset number selected (0 to 9).

In Edit mode: Key 0-9 is used to enter numbers and/or characters (ex: 2abcABC).

Key 1 is also used for special symbols (|, ., -, @, space, !, ~, _, &, :).

3 PRESET

Press this button followed by one of the number buttons (0-9) to store the currently selected item against the preset number selected.

4 HOME

Displays the top level menu.

Turns on the SLA5520 when the SLA5520 is switched in Standby mode.

5 ▲ (UP)

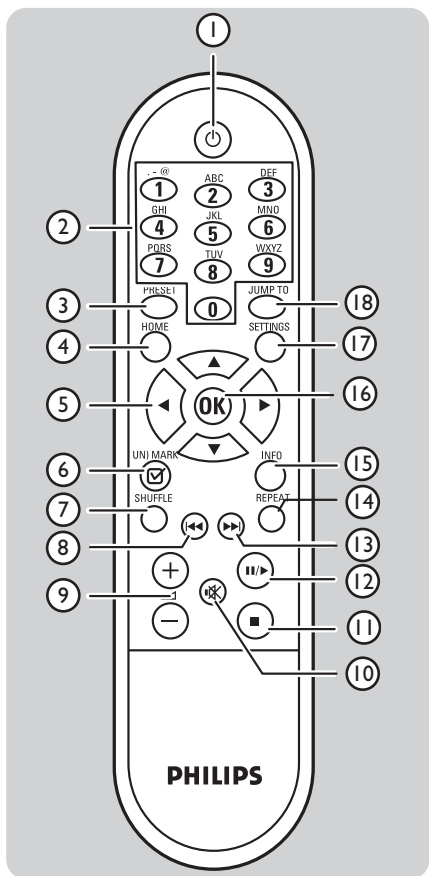
Scrolls up through the current menu list (hold the button down to scroll faster)

In Edit mode: enter or change characters by scrolling up through the ASCII character table.

▼ (DOWN)

Scrolls down through the current menu list (hold the button down to scroll faster)

In Edit mode: enter or change characters by scrolling down through the ASCII character table.



◀ (LEFT)

Moves up one level up in the menu hierarchy on the LCD display.
 Example: if artist is displayed, pressing Left returns you to the PC Files menu.
In Edit mode: Moves the cursor to the left, one character at the time.

▶ (RIGHT)

Selects the current highlighted menu item
 Example: If the currently displayed item is an album, pressing Right will display a list of all songs of that album
 Example: If it is an Internet Radio station, pressing Right will select that station.
In Edit mode: Moves the cursor to the right, one character at the time and confirms inputs.

6 (UN)MARK

Press this button once to add the song currently playing or Internet Radio station to the **favorite Playlist**.
 When playing favorite Playlist: press to remove from favorite Playlist.

7 SHUFFLE

Toggles between random and ordered playback modes in the current folder.
 Note: The selected mode is stored permanently until you press the Shuffle button again or until the products will be switched off (StandBy mode).

8 ◀◀ (previous/rewind)

Press this button once to jump back to the beginning of the currently playing song in the playlist, album, artist or Internet Radio station list.

Press this button once to jump to the previous song in the playlist, album, artist or Internet Radio station list.
 If it reaches the beginning of a list, it wraps around to the end of the list.
In Edit Mode: Press this button to delete one character at a time (backspace).

9 - ▲ + (Volume Up/down)
 Increases (+) and decreases (-) the volume.

10 🔇 (Mute)
 Mutes the sound.

11 ■ (STOP)
 Stops playing the current item.

12 ||▶ (pause/play)
 Press this button once to play the currently selected item (Internet Radio station, playlist, album, artist, genre or song file). Information about the current item is displayed on the screen

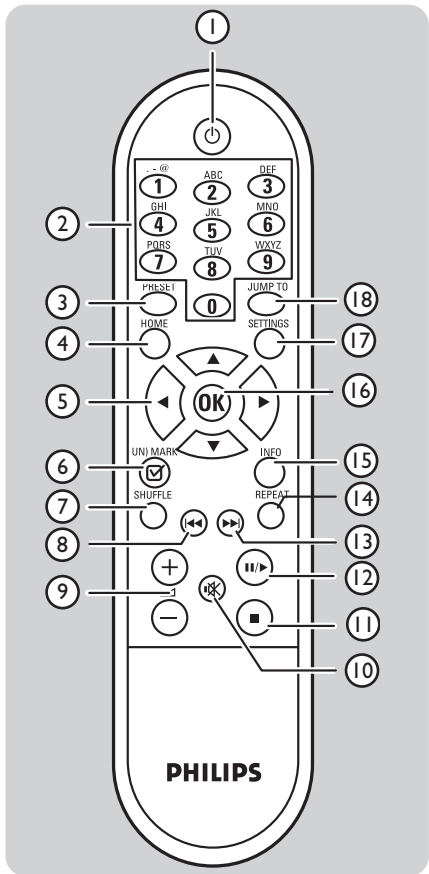
Press again while the song is playing to pause the song.
 To continue playing an item that has been paused, press ||▶ again.

13 ▶▶ (next/fast forward)
 Press this button once to jump to the next song in the playlist, album, artist or Internet radio list.
 If it reaches the end of a list, it wraps around to the beginning of the list.
 Press and hold the button for more than 1 second to fast forward the current song. Play recommences when the button is release.

14 REPEAT
 Press this button once to repeat only the song that is currently playing (only applies to PC music files). The Repeat icon is displayed on the LCD screen.

Press again to repeat all songs of the currently selected item.
 The Repeat All icon is displayed on the LCD screen.

Pressing again will return to Normal Play.



15 INFO 

Displays additional information on the currently selected music file.
Pressing the button again enables a return to the default item display.

16 OK

Selects the current highlighted menu item

Example: If the currently displayed item is an album, pressing OK will start playing that album.

Example: If it is an Internet Radio station, pressing OK will select that station.

17 SETTINGS

Displays the top level of the Settings menu.

18 JUMP TO

Activates Jump To function (character based keys (0-9) will be accepted).

17 PLAY-LIST

Displays the Dynamic Playlist that is stored on the SLA5520.

The list may contain up to 20 items

The SLA5520 has a built-in LCD screen. Together with the remote control device, it enables easy operation.

LCD Menu Structure

The menu displayed on the **Wireless Music Adapter** LCD screen is organized as a hierarchy, enabling you to access the:

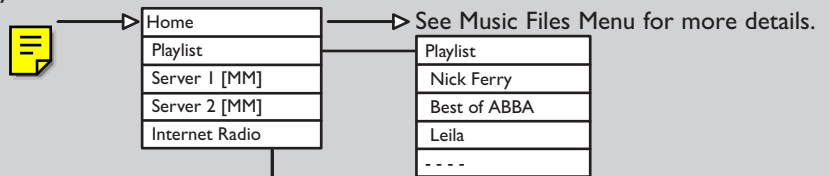
- Home menu
- A Dynamic Playlist of Internet Radio and music files (if available)
- A Dynamic Playlist of music files (if available)
- Internet Radio menu
- Music files stored in your Philips Media Manager Library (multiple servers may be visible)
- Configuration menu

The exact menu structure will depend on your network environment (i.e. whether you have Internet access or not) and how your music library is organised on your personal computer.

A top level LCD menu structure could look like this:

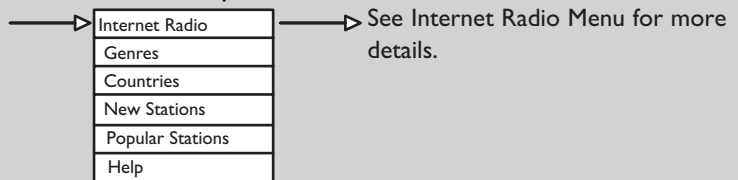
Home

Press the **HOME** button (1) at any time.



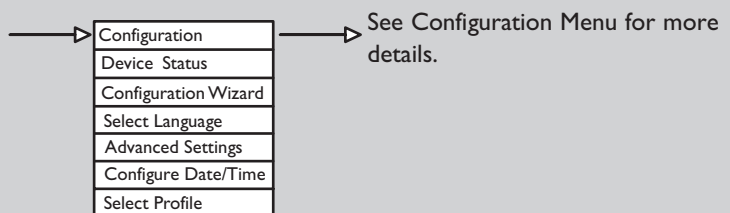
Internet Radio

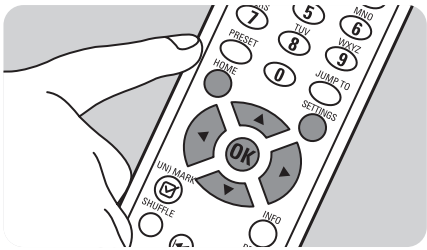
Press the **HOME** button (1) AND scroll down the Home menu.



Configuration

Press the **SYSTEM** button (6) at any time.





Navigating in the LCD screen menus

Press ► to select a menu item (move right)

Press ▲ to move up the menu

Press ▼ to move down the menu

Press ◀ to cancel a menu item (move left)

Press **HOME** (1) to activate the **Philips SLA5520** menu

Press **SETTINGS** (X) to go to the Configuration menu

Press **PLAY LIST** (17) to go to the **Dynamic Playlist**

Wireless Music Adapter LCD Screen Icons

The following table describes the icons that may be displayed on the **Wireless Music Adapter** LCD screen.

	Description
➤	Move down the menu hierarchy.
➤	Move up the menu hierarchy.
⌂	Processing (please wait).
⏮	Item may be played.
▶	Now playing.
⏸	Now paused.
🔄	Now playing all items.
🔀	Shuffle mode enabled.
🔁	Repeat mode enabled.
🔄	Repeat All mode enabled.
📁	Storing current item.
^	Lower case (edit mode).
∨	Upper case (edit mode).
📊	Buffer fill status.
📶	Wireless signal strength.
📶	Wireless network disconnected.
📶	Peer-to-peer wireless network mode available.
📶	Internet Radio available.

With the SLA5520 you are able to enjoy digital music anywhere in the home. Your SLA5520 plugs into any audio system and connects wirelessly to a PC or directly to the Internet via a base station (BS). The remote control and the built-in LCD display provide easy control and quick selection of music.

Key Features

- Browse music file content on your computer
- Browse and search content by Song, All Tracks, Albums, Artist, Genres or Playlists
- Set up SLA5520 on your network simply by using the remote control
- Manage profiles and upgrade software using the **Wireless Music Adapter PC Utility**
- ~~View device status information using the built-in Web-based presentation page~~
- Listen to Internet Radio stations and music files (for example WMA-DRM, WMA, MP3, ~~WAV~~) over your audio system
- Browse and update the Internet Radio station database

The instructions in this User Manual assume that you already have a wireless network up and running. The installation of your wireless network is device-dependent and thus outside the scope of this document.

Please refer to your wireless network device documentation for more details.

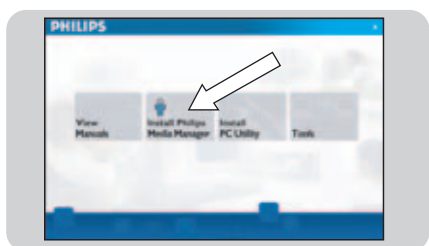
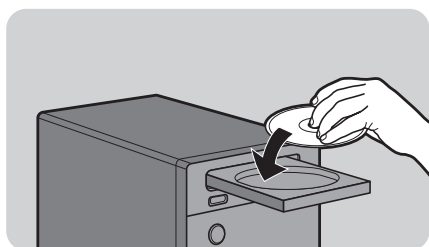
To be fully functional your SLA5520 requires the installation of:

- the Philips Media Manager software on your PC
Philips Media Manager allows you to create a library of music files on your PC. Music files include MP3 and WMA formats. It also provides a UPnP Media Server which enables your SLA5520 to browse these files on the PC.
- the **Wireless Music Adapter PC Utility** on your PC
*This software allows you to configure your **Wireless Music Adapter** network profiles. Normally, you will only need to use this utility if:*
 - you want to configure a network profile from a PC instead of from the SLA5520 itself, or
 - you want to upload new software for your **Wireless Music Adapter**

Installing Philips Media Manager

Place the Philips Media Manager CD in your CD or DVD drive and install the Philips Media Manager software.

The CD starts automatically. If it does not, double-click 'My Computer', then the CD-ROM drive icon and finally 'Setup.exe' to start the CD.



In the menu that appears on your computer screen, click 'Install Philips Media Manager', and follow the on-screen instructions.

When opening the Philips Media Manager for the first time, you will be asked if you want to add a folder and scan for audio files. Open a drive or a folder with audio files in it. (For example: the My Documents folder, if you have stored audio files there.)

- You can always add more files and folders later.

Adding files to the Media Manager

Only the files that you see in the Media Manager will be accessible from your SLA5520 and only the files that are supported by your SLA5520 will be available for your audio system.

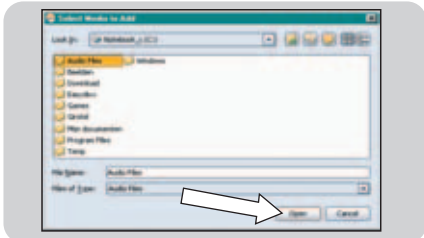
- 1 Click 'Music'.



- 2 First, click the 'Add Music' button below the media categories, then click 'Add Files or Folders...'.



- 3 Select a folder or one or more audio files and click the 'Open' button to add the selected folder or files to the Media Manager window.
> From now on, the audio files you added may be accessed from the SLA5520.



Opening and closing the Media Manager window.

You can close the Media Manager window, but its icon will remain active in the lower right corner of your computer monitor. This icon needs to remain visible, otherwise the SLA5520 will not be able to access the media files on that computer.

Double-clicking the icon opens the Media Manager window.

~~Installing the Philips Wireless Music Adapter PC Utility~~

- ~~1 Insert the CD-ROM provided into your PC's CD-ROM drive.~~

- ~~2 Click on 'Install PC Utility'.~~
~~> The InstallShield Wizard screen will be displayed.~~

- ~~3 Click the 'Next' button and follow the instructions on the screen to install the software.~~

MAC Address Control on the Wireless Network

If you are using MAC Address Control on your wireless network, you will need to know the MAC address of your **Wireless Music Adapter**. The MAC address is a unique number that identifies your device on the network. It consists of a series of numbers and letters in the following format: xx.xx.xx.xx.xx.xx

The MAC address for your **Wireless Music Adapter** is printed on the bottom of the device. It can also be displayed on the LCD screen. See 'Viewing Network Status Settings'.

You must change your wireless network settings to exclude the **Wireless Music Adapter**'s MAC address from filtering. Please refer to your wireless network's documentation for details on how to do this.

Enabling Internet Connection Sharing on Your PC

If your connection to the Internet is made available via a single PC, that PC must enable 'Internet Connection Sharing' in order to display the clock on the LCD screen.

To set up and use the Internet Connection Sharing (ICS) feature in Microsoft Windows XP:

- 1 Log on to the host computer as Administrator or Owner.
- 2 On the taskbar, click 'Start', then 'Control Panel'.
- 3 In Control Panel, click 'Network and Internet Connections' under 'Pick a category'.
- 4 Click 'Network Connections' icon.
- 5 Right-click the connection that you use to connect to the Internet and choose Properties from the menu. For example, if you connect to the Internet using a modem, right-click the desired Dial Up connection.
- 6 Click the 'Advanced' tab.
This will give you access to the options for sharing your Internet Connection.

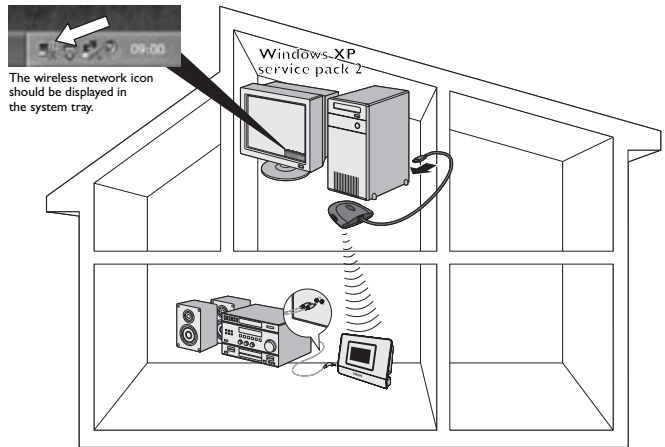
Next:

- a) In the 'Internet Connection Sharing' section: Place a check mark to allow other users to connect through this computer's Internet connection.
 - b) Remove the check mark that allows other network users to control or disable the shared Internet connection.
- 7 Click OK (16). The following message appears:
'When Internet Connection Sharing is enabled, your LAN adapter will be set to use IP address 192.168.0.1. Your computer may lose connectivity with other computers on your network. If these other computers have static IP addresses, you should set them to obtain their IP addresses automatically. Are you sure you want to enable Internet Connection Sharing?'
 - 8 Click Yes.
The connection to the Internet is shared with other computers on the local area network (LAN). The network adapter that is connected to the LAN is configured with a static IP address of 192.168.0.1 and a subnet mask of 255.255.255.0.

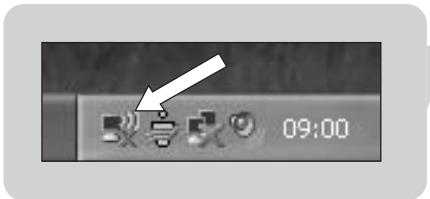
Using Windows XP Service Pack 2

These instructions guide you through configuring your wireless network settings, for the following scenario:

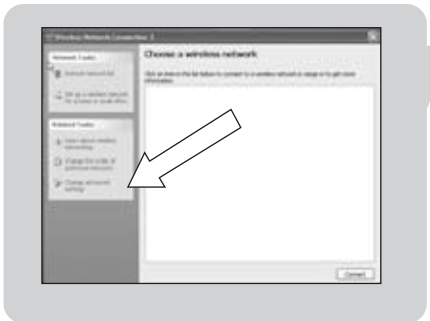
- If you do not have a wireless basestation (also known as router or access point) and your PC has a wireless adapter installed.



Note: If the wireless network icon is not shown, follow normal installation procedure as described in this User Manual.



- 1 Click on the Wireless Network icon.
This opens the Wireless Network Connection window.



- 2 Click on 'Change advanced settings'.
This opens the Wireless Network Connection Properties window.



3 Select tab 'Wireless Networks'.
In this tab you can control your wireless networks.

4 Click on button 'Add'.
This will open the Wireless network properties window.

Note: If this list is populated, 'Remove' all items first.



5a Fill in a Network name (SSID) you would like for your wireless network, for example: 'philips'.
This is the name your streamium device will recognize.

5b Select Network Authentication 'Open'.

5c Select Data encryption 'Disabled'.
Note: If you want to enable WEP encryption, see details in this User Manual.

5d Mark the box next to 'This is a computer-to-computer (ad hoc) network; wireless access points are not used'.

6 Click on 'OK'.
This will close the Wireless network properties window.



7 Click on 'OK'.
This will close the Wireless Network Connection Properties window.

Improving the start up time for the SLA5520 to Computer network (ad hoc mode)

You might experience a long wait while the SLA5520 is 'searching for UPnP servers'. You can reduce this time by running the supplied AutoIP Network Utility.

- Insert the CD-Rom.
- Select 'TOOLS'.
- Start 'Auto IP Network Utility'.
- Follow on-screen instructions.

Note: Do not use the Auto IP Network Utility tool if you use a wireless base station or router in your network or if you have Internet Connection Sharing (ICS) enabled.

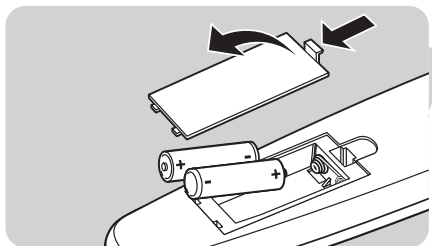
Installing your SLA5520

Before You Start

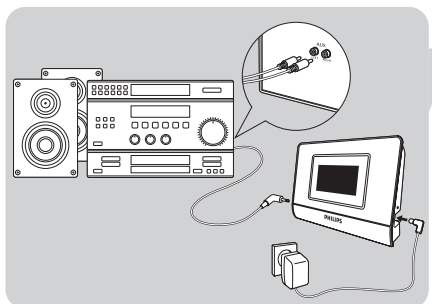
- Make sure that your wireless network is active.
- Make sure that Internet access is available.
- If your base station has Media Access Control (MAC) filtering enabled, make sure that the SLA5520's MAC address is added to the Access Control List of your base station. For details see 'MAC Address Control on the Wireless Network'.
- If you are using a firewall, make sure that your firewall is correctly configured to allow wireless access to shared media files. See 'Extra information' for more details.

Connecting the SLA5520

- 1 Insert batteries and make sure it is correctly positioned as indicated by the engraved symbols.



- 2 Connect the 1.8" plug of the cable to the audio socket on the SLA5520. Connect the other end to the AUX input of your audio system amplifier (2x RCA).



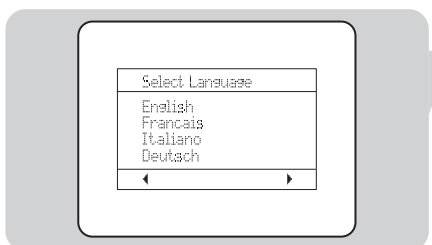
- 3 Connect the power cable to the power socket on the **Wireless Music Adapter** and connect it to the power supply.

> The **Wireless Music Adapter** should power on automatically after a few seconds (if it does not, press the **⏻** button on the remote control).

- 4 Select your display menu language: ~~English, Français, Italiano, Deutsch, Español, or Nederlands.~~

Use **▲** and **▼** to select. Confirm with **OK** or **▶**.

> The **Wireless Music Adapter** will automatically search for a currently available wireless network and start the Configuration Wizard on the device.



Configuration

Introduction

The SLA5520 has a Configuration Wizard that guides you through the process of configuring network profiles for your SLA5520. The Configuration Wizard is used when you want to:



- Install the SLA5520 for the first time.
- Make later changes to a network profile setting.

This chapter describes:

- Information you will need to configure the wireless network profile for the SLA5520
- Structure of the Configuration menu
- How to use the Configuration Wizard to change network profile settings

Network Information needed by the Configuration Wizard

The Configuration Wizard will guide you through the setup process, prompting you to edit one or more of the following settings. Before proceeding, make sure that you have the following information in front of you:

Prompt	Option Selected	Information You Need To Know
 Select Network	Other (Advanced)	Current Network SSID (to confirm) Alternative Network SSID
Select wireless mode	Network (Infrastructure)	Is there an Access Point available on the wireless network?
 Select security type	WPA, WEP, None	Key Index and Encryption Key
Network settings	Automatic (DHCP) Manual (Static IP)	Is a DHCP Server Available? IP Address (for SLA5520) Subnet Mask Gateway Preferred DNS Server Alternate DNS Server

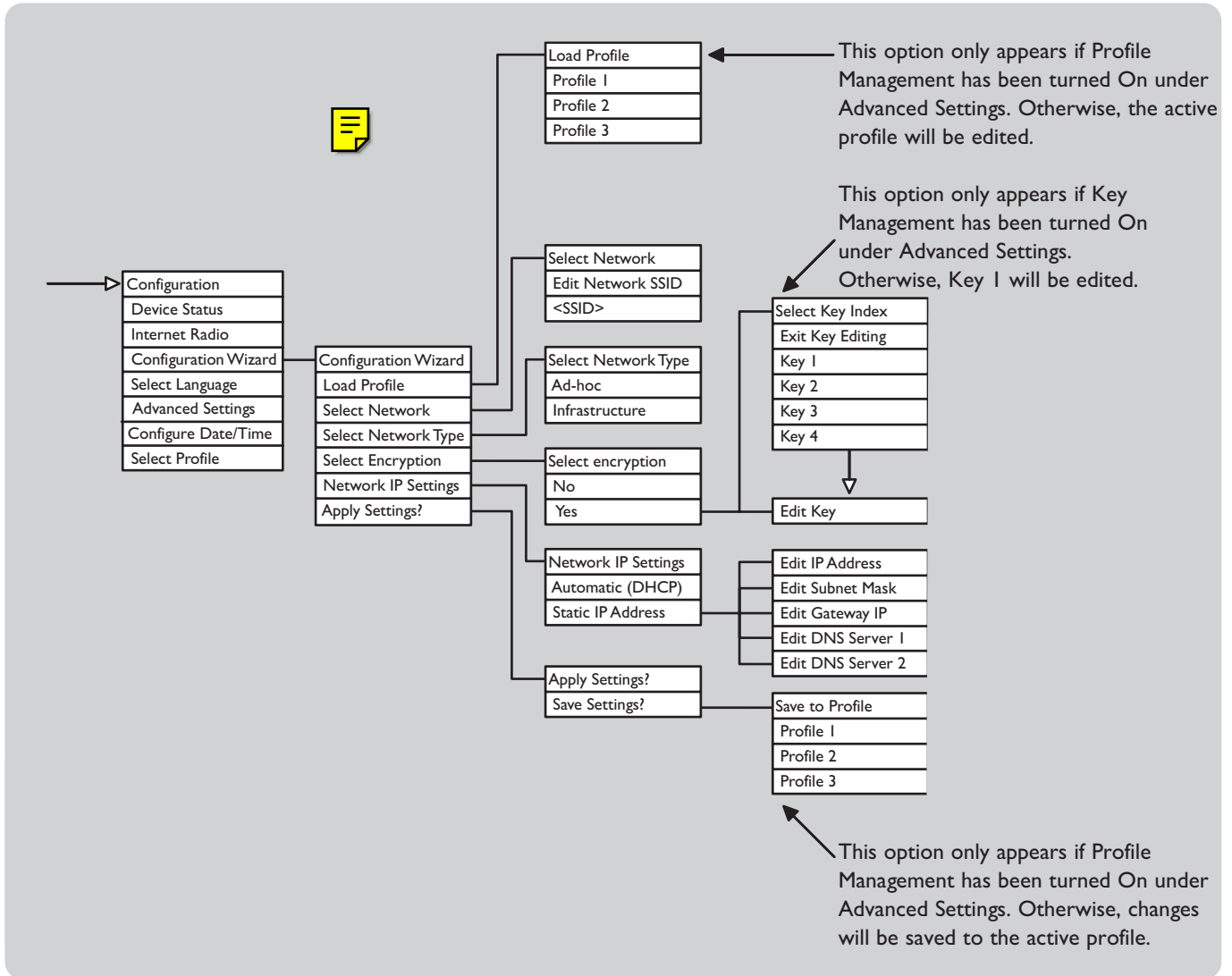
Note: The SLA5520 determines some settings automatically during its search for an available wireless network. It may therefore not need to prompt you for all of the above settings during the setup process.

Configuration Wizard Menu

Configuration Wizard

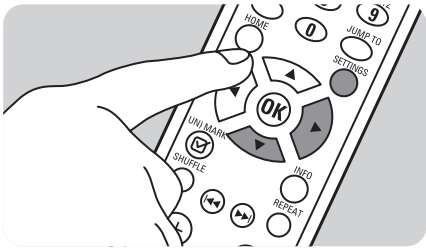
The Wizard starts automatically on installation or reset.

Otherwise, press the **SYSTEM** button on the remote control at any time and scroll down to Configuration Wizard.



Starting the Configuration Wizard

The Configuration Wizard will start automatically the first time you connect your SLA5520 to the power.



To start the Configuration Wizard at a later time:

- 1 Press **SETTINGS** (X) on the remote control to display the **Settings** menu.
- 2 Press ▼ (X) until 'Configuration Wizard' is highlighted. Press ►.
- 3 Press ► (X) on the remote control to go to the next screen and begin the setup process.

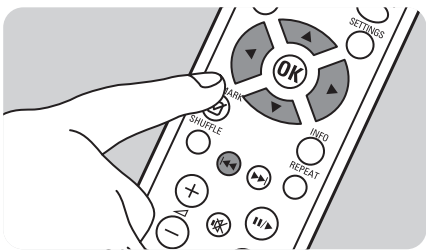
Note: This process requires you to know some technical details on how your wireless network is set up. If you are unsure of any of the settings, consult the person who set up your wireless network or refer to the appropriate network documentation.

Changing network settings

Entering Text in Edit Mode

For some settings (Example: **SSID**, **WEP code**, **WPA code**) you will need to enter text characters in Edit mode. In edit mode you can use the remote control digit buttons to enter text, similar to the way you enter text messages on a mobile phone.

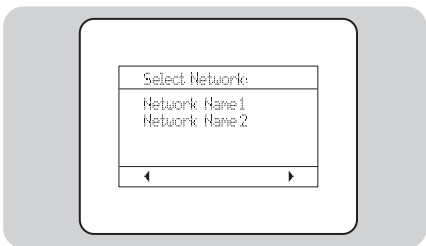
The following special functions are also available in Edit mode:



- | Function | Description |
|----------|--|
| ◀▶ | Move the cursor forward one character at a time. Press at the end of a line to complete the changes and move to the next item. |
| ◀◀ | Backspace to delete one character at a time. |
| ▲▼ | Scroll through the ASCII character list. |

Selecting a Network

If the LCD screen displays 'Select Network':



- 1 If more than one wireless network is available, press ▼ to choose the **network name (SSID)** for the wireless network and press ►.
- OR -
Check that the **network name (SSID)** displayed for the single wireless network found is correct and press ►.
- 2 Otherwise, press ▼ to choose '**Other (Advanced)**' and press ►.
Enter the **network name (SSID)** (see 'Entering Text in Edit Mode').
The **network name (SSID)** must contain between 2 and 32 alphanumeric, case-sensitive characters.
Press ► when you have finished entering the **network name (SSID)**.

Selecting a Network Type

If the LCD screen displays 'Select wireless mode': (See 'Network Environments Supported' for a more complete description of network types.)

- 1 Press ▼ to choose an option, then press ►.
- 2 Choose 'Network (Infrastructure)' if you have a base station.
-OR-
Choose 'Point to Point (Ad-Hoc)' if the SLA5520 is connecting directly to the PC's wireless adapter.

Selecting Security Type (Encryption Settings)

If the LCD screen displays 'Select security type' or 'Edit Key 1', you have the following options to secure your wireless network:

- 'WEP (64 or 128)' or 'None' if the SLA5520 is connecting directly to the PC's wireless adapter;
- 'WEP (64 or 128)', 'WPA' or 'None' if the SLA5520 if you have a base station.

Note: If you wish to choose WPA security, first check that every wireless device on your network has WPA capabilities. If not, you will need a software update for your Access Point or wireless router, and a new driver (and maybe softwareware) for each wireless adapter on your network.

- Choose 'None' if no encryption is used on the wireless network.
- If you choose 'WEP (64 or 128)', you will be prompted to enter the WEP Key (security code). If a key already exists in the current profile, asterisks (***) will be displayed in place of the actual key. See 'Entering Text in Edit Mode'.
- If you choose 'WPA', the LCD screen displays 'Select WPA mode'. Select 'TKIP' or 'AES'. You will be prompted to enter the WPA Key (security code). If a key already exists in the current profile, asterisks (***) will be displayed in place of the actual key. See 'Entering Text in Edit Mode'.

Note: See the user manual of your wireless base station for details on how to identify the WPA Key (security code).

- Press ► (X) when you have finished entering the key (security code).
The Key Type and Key Length will be displayed in the top right of the LCD screen, based on what you have entered: i.e. ASCII or Hex, 64 or 128 bit.

Note: By default, Key Index 1 will be used. To use another Key Index, see 'Managing Multiple Key Indexes'.

Selecting Network IP Settings

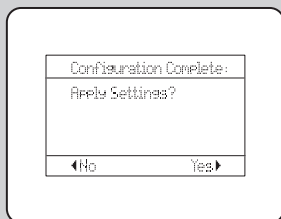
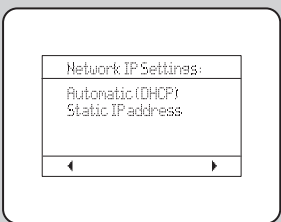
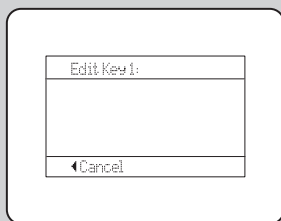
If the LCD screen displays 'Network Settings':

- 1 Press ▼ to choose an option, then press ►.
- 2 Choose 'Automatic (DHCP)' if you are using DHCP or Auto IP on the network or 'Manual (Static IP)' if the SLA5520 will need a fixed IP address.
- 3 If you choose 'Manual (Static IP)', you will be prompted to edit/confirm the SLA5520's IP Address, Subnet Mask, Gateway, DNS Server Preferred and DNS Server Alternate.
Press ► after confirming/entering each IP address.

Completing the Configuration

- 1 When all required settings have been entered, the Configuration Wizard will display the message: 'Configuration Complete...Apply Settings?'
- 2 If you are modifying an existing profile, press ► to display the Save to Profile menu. Press ▼ to choose a profile in which to save the new settings.
- 3 Press ► to finish. The message 'Configuration Wizard...Applying Settings' or 'Configuration Wizard...Saved to Profile xxx.' will be briefly displayed, depending on whether you are applying changes to the active profile or to a different profile. The Configuration Wizard will then display the home menu.

Note: If the message No Network or another error message appears, the SLA5520 was unable to connect to an available wireless network. Please see 'Troubleshooting'.




Introduction

This chapter describes how to

- Turn on the SLA5520
- Browse and listen to Internet Radio stations through your audio system.
- Browse and listen to music files stored on your PC through your audio system.
- Use preset numbers to store and play up to 10 items (Internet Radio stations, songs, playlists etc).
- Use a Dynamic Playlist to save and play up to 20 items (Internet Radio stations, songs, playlists etc).

Powering on the SLA5520

- 1 Press  or **HOME** to turn on the SLA5520.
- 2 If the device is correctly configured you will see the Home menu displayed. If it is not correctly configured, the Configuration Wizard will be displayed (see 'Configuration').



Listening to Internet Radio

The SLA5520 allows you to listen to Internet Radio stations through your audio system.

Notes:

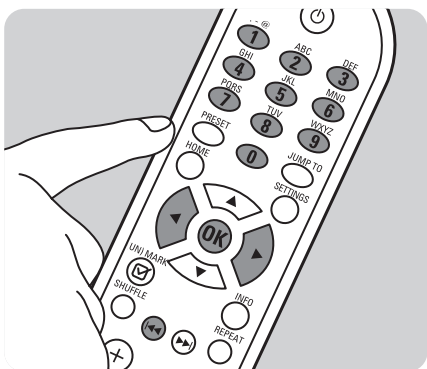
- If you have no access to the Internet, Internet Radio functions will not be available.
- Internet services will only be available if you register. See below.

Registration for free Internet services

When the SL5520 connects to the Internet for the first time, or after you have reset all menu settings, the SL5520 will ask you to register your email address.

Also, each new user you add will have to register an email address.

- 1 Check whether the PC on which you are running Philips Media Manager has Internet access by opening a website on the Internet with your Internet browser program (e.g. www.philips.com).
- 2 Press **HOME** (X) to display the Philips SLA5520 menu.
- 3 Press **▼** (X) until 'Internet radio' is highlighted. Press **▶**.
> The LCD screen displays 'Enter e-mail address'.



- 4 Use the remote control digit buttons (X) to enter the e-mail address. Each digit button cycles through various characters. E.g.: The **1** button cycles through 1, ., -, @, space, !, ~, _, & and :.
• Use **◀** and **▶** to move the cursor one character backwards / forward.
• Use **◀◀** to delete a character.
• Also see 'Entering Text in Edit Mode'.
- 5 Press **OK** (X) to send your e-mail address.



> The LCD screen displays 'Enter password'.

- 6 Use the remote control digit buttons (X) to enter the password. Press **OK** (X) to confirm.



> The LCD screen displays 'Read e-mail'. You are now registered and the SLA5520 will have access to Internet services..

- Make note of your password, as you will need it if you want to re-register after resetting the SL5520.

Notes:

- If the LCD screen displays 'Incorrect e-mail' address and/or 'Incorrect password', use the 'Back' option to go back to 'Enter e-mail address' and/or 'Enter password' and repeat steps 4-5 an/or 6.
- In case ??????????????, the LCD screen displays 'Confirm e-mail address'. Confirm your e-mail address by ??????????.

Radio Internet Station Menu

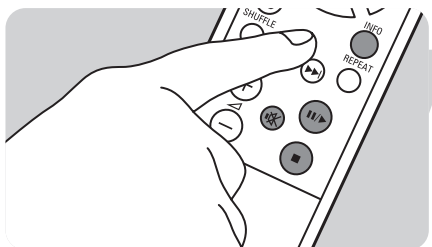
You can browse the Internet Radio station database by genre (music style), country and station. Stations are organized in a hierarchical menu, similar to the way in which files are organized in subdirectories on a PC. Menu items are displayed on the SLA5520's LCD screen and you navigate through the menu using the remote control.

Note: If the 'Internet Radio' menu is not presented in your selected language, select 'Manual Update'. See 'Updating the Radio List Manually'.

Internet Radio Remote Control Functions

The following remote control functions can be used in Internet Radio mode:

- II▶** Play
- Stop playing
- 🔇** Mutes the sound.
- INFO** Display track information



Playing Internet Radio

Use the remote control and follow these steps:

- 1 Press **HOME** (I) then ▼ until 'Internet Radio' is highlighted. Press ▶.
- 2 To browse through the menu items, press ▲ or ▼.

To select the highlighted menu item, press ▶.

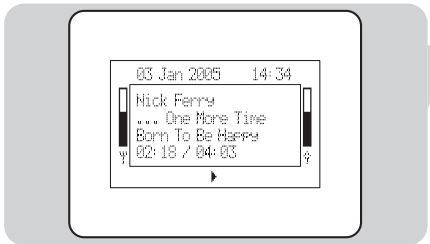
To return to the previous menu level, press ◀.
- 3 When you see this icon '🎵' you can:

Press **II▶** to play the selected station.



Viewing Current Station/Song Information

The SLA5500 LCD screen displays station and song information during playback of an Internet Radio station. Not all stations broadcast additional song information. If you are browsing in another menu and wish to re-display information about the station/song currently playing, press the **INFO** button (I4).



Example Display Text

Nick Ferry
... One More Time
Born To Be Happy



Explanation

Artist name.
Name of the album.
Title of the song currently playing.
Now playing.
Streaming buffer fill informator: indicates that the station signal is being buffered to the device and will begin to play in a few seconds.
Radio signal strength indicator.

Internet Radio Service

Your SLA5500 comes preconfigured with free Internet Radio Stations. You can choose to sign up to an Internet Radio Service to receive more stations. Such services may also allow you to add your own stations to the list. For more details, please see the Web site at: <http://www.radiosetup.com>. When you have subscribed to a service, you can either wait until the automatic radio list update occurs, or perform a manual update. See 'Updating the Radio List' for details.

Listening to Music Files

The SLA5520 allows you to listen to music files stored on your PC through your audio system. Music files include WMA-DMR, WMA and MP3 files ~~and WAV files.~~

Before You Start

- 1 The SLA5520 must be connected to the wireless network.
- 2 The UPnP Media Server must be running on your PC containing the Philips Media Manager Music Library (see 'Starting the UPnP Media Server').
- 3 There must be at least one music file in the Philips Media Manager Music Library on your PC.

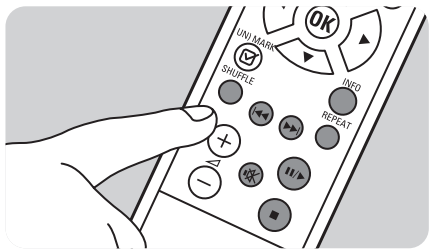
Music Files Menu


You can browse music files by album, all tracks, artist, genre (music style), genre/artist, genre/album and playlist. The music files are organized in a hierarchical menu, similar to the way in which files are organized in subdirectories on a PC.

Menu items are displayed on the SLA5520's LCD screen and you navigate through the menu using the remote control. The actual content of each menu is determined by the structure of your Philips Media Manager Music Library.

Music File Remote Control Functions


The following remote control functions can be used in Play mode:



- II▶** Play the displayed item / Pause the current item.
- ▶▶** Press once to play next track / Hold down to fast forward the current song.
- ◀◀** Go back to beginning of current track (Press once).
Play previous track (Press once).
- Stop playing.
- 🔇** Mutes the sound.
- REPEAT** Press once to repeat current song / Press twice to repeat all songs.
- INFO** Display track information 
- SHUFFLE** Toggle Shuffle mode (play in random/normal order).

Playing Music Files

Use the remote control and follow these steps to browse for and play music files:

- 1 Press **HOME** (I) on the remote control to go to the top level menu.
- 2 Press ▼ to find the Media Manager 'PMM- (computername)'.
- OR -
If multiple servers are available, press ▼ to highlight the desired server name and press ▶.
- 3 To select a genre, album, artist, playlist or song, press ▲ or ▼ to browse up and down through the items and press ▶ to move right in the menu hierarchy until the desired item is displayed.
- 4 When you see this icon  you can press **II▶** to start playing that item.

If you press **II▶** while:

- a playlist is displayed, all of the tracks on that playlist will be played
- an artist is displayed, all of the tracks on all albums by that artist will be played
- an album is displayed, all of the tracks on that album will be played
- a song title is displayed, only that song will be played.

Playback of DRM protected songs

Your SLA5500 is able to playback DRM10 protected songs. However DRM prohibits use of the Philips Media Manager. It is strongly recommended to use Windows Media Connect. This requires Windows XP, Service Pack 2.

How to connect the SLA5500 to Windows Media Connect is described below.

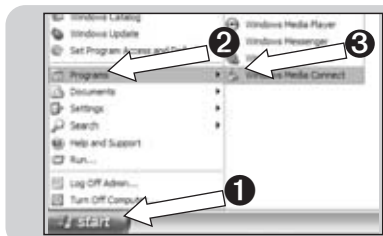
Configuration steps for playing DRM protected songs on the SLA5500

1 Configure the SLA5500.

- Follow instructions in chapter 'Installing your SLA5520'.

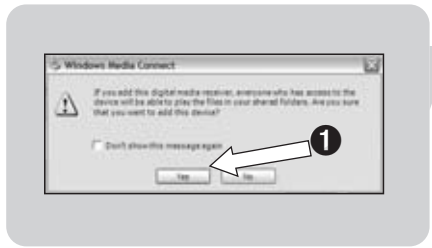
2 Start 'Windows Media Connect'.

1. Click on 'Start'.
2. Click on 'Programs'.
3. Click on 'Windows Media Connect'.

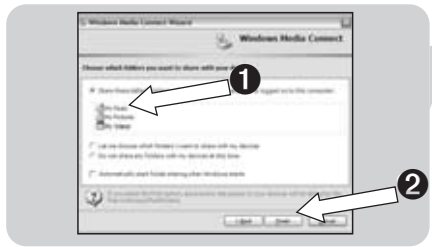




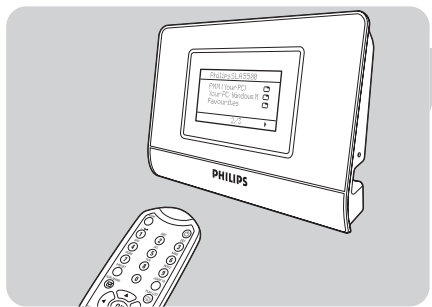
- 3** Allow communication with SLA5500.
1. Click on 'Philips SLA5500'.
 2. Click on 'Next'.



- 4** Confirm communication with SLA5500.
- Select 'Yes'.



- 5** Select folders to share.
1. Choose the folders you wish to share with the SLA5500.
 2. Select 'Finish'.



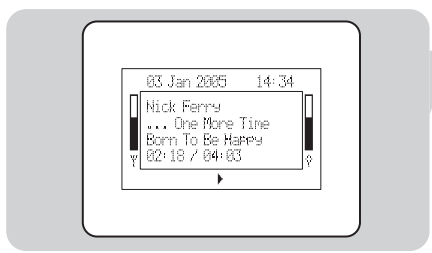
- 6** Select 'Windows Media Connect' as server.
1. Point the remote control towards SLA5500.
 2. Press **HOME** (I).
 3. Press **▼** to select 'Windows Media Connect'.
 4. Press **▶** to confirm.

> Your SLA5500 is now able to play DRM protected songs.

- 7** Browse to your DRM protected songs.
- See chapter 'Playing music files' on how to start playing DRM protected songs.

Viewing Song Information





The SLA5520 LCD screen displays various information during playback, such as music file details, playback modes and network status.



Example Display	Text Explanation
Nick Ferry	Artist name.
... One More Time	Name of the album.
Born To Be Happy	Title of the song currently playing.

Playback Modes:

- ▶ • Now playing
- || • Now paused
- ↺ • Repeat mode enabled
- ↺All • Repeat All mode enabled
- ||| • Shuffle mode enabled

<		Move up the menu hierarchy.
>		Move down the menu hierarchy.
		Item may be played.
9/54		Track number (9) of total tracks (54) in item.
		Wireless signal strength indicator.
		Buffer fill indicator.
01:15 / 02:30		Elapsed time / total time for current track, if available (default).

Saving Favorite Music Items

Saving an Item to a Preset Number

You can save an album, artist, playlist or song to one of 10 preset numbers.

- 1 Select an item to be saved (see previous sections) and check that it is active by playing it.
- 2 Press **PRESET** (3), followed by the preset number (0 to 9) where you want to save the item.
Note: There is no 'erase' function; simply overwrite an existing preset with the new item.

Selecting and Playing a Preset Item

- 1 Simply press the relevant preset number button (0 to 9).
- 2 ~~Press **W** to listen to the selected item.~~
- 3 Press **■** to stop listening to selected item.

Saving Favorite Items

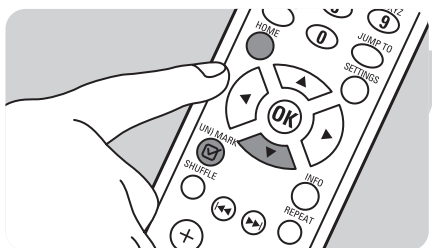
You can save up to 20 of your favorite items (albums, songs etc) to a favorite Playlist stored locally on the SLA5520.

To add an item currently playing to the favorite Playlist:

- 1 Press **HOME** (X) to display the Philips SLA5520 menu.
- 2 Press **▼** (X) until 'Favorites' is highlighted. Press **▶**.
- 3 Press **(UN)MARK** (4).

To remove the item currently playing from the Dynamic Playlist:

- 1 Press **HOME** (X) to enter the Philips SLA5520 menu.
- 2 Press **▼** (X) until 'Favorites' is highlighted. Press **▶**.
- 3 Press **(UN)MARK** (4).



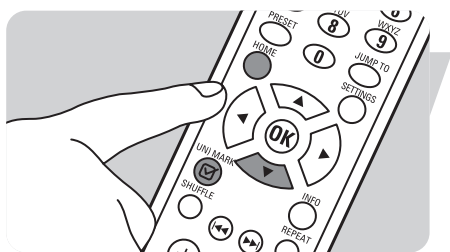


Playing Favorite Items

- 1 Press **HOME** (X) to display the Philips SLA5520 menu.
- 2 Press **▼** (X) until 'Favorites' is highlighted. Press **▶**.
- 3 To play the entire Playlist, press **▶▶**.
- 4 To play a specific item from the Dynamic Playlist, press **▲** or **▼** until the item you want is highlighted. Press **▶**.

Replacing Favorite Items

The favorite Playlist can contain up to 20 items. If you try to add a 21st item, a 'Favorite List Full' message appears on the LCD screen. If you want to replace an existing item with the new item:



- 1 Press **HOME** (X) to display the Philips SLA5520 menu.
- 2 Press **▼** (X) until 'Favorites' is highlighted. Press **▶**.
- 3 Press **▼** to find the item to be replaced.
- 4 Press **(UN)MARK** (4) to remove the old item from the list. The new item is automatically inserted into the favorite Playlist.

Advanced cConfiguration

Introduction

The Configuration functions on the SLA5520 are arranged in a hierarchical menu, similar to the way in which files are organized in subdirectories on a PC. Menu items are displayed on the **Wireless Music Adapter's** LCD screen and you navigate through the menu using the remote control. See 'Configuration Menu Structure'.

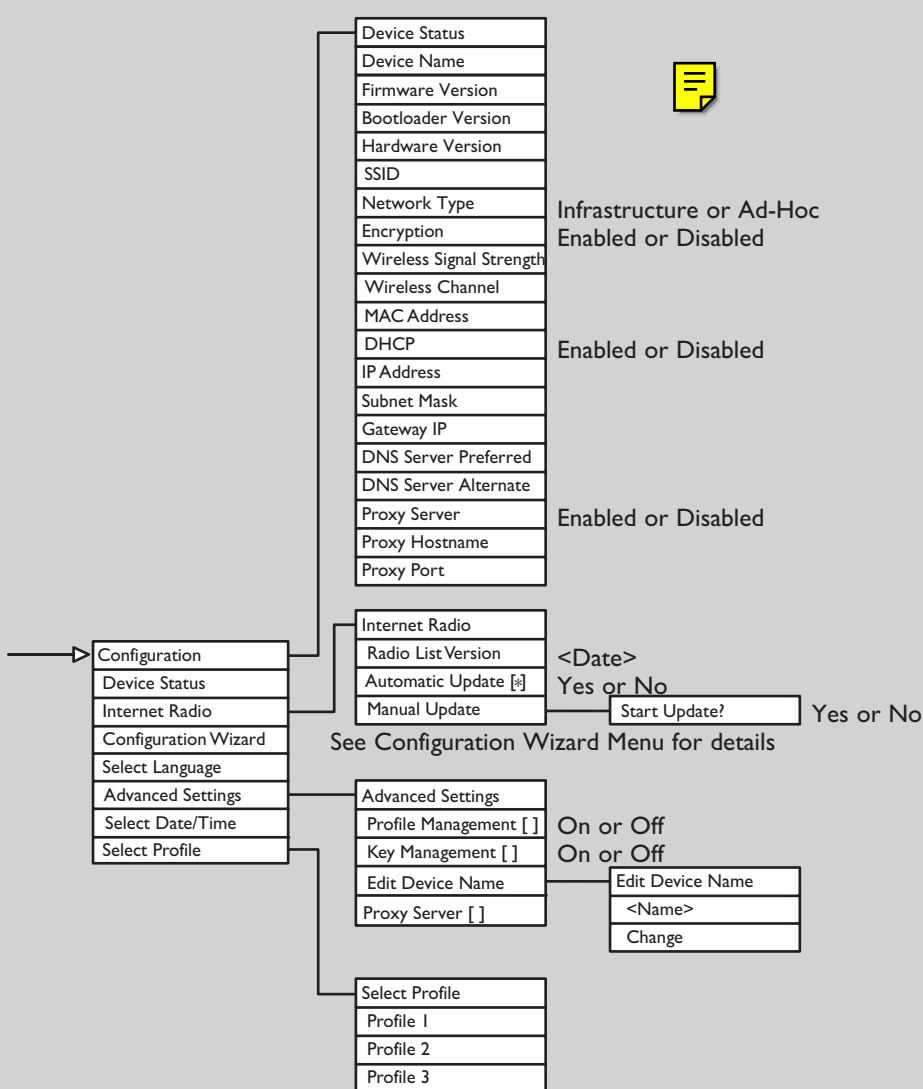
This chapter describes how to:

- View various network status settings for troubleshooting purposes.
- Use the Configuration Wizard to make changes to a network profile setting after initial installation.
- Manage which profile you want to change when you next start the Configuration Wizard.
- Change the device name of your SLA5520.
- Select a new network profile for your SLA5520
- Reset your SLA5520 to its factory settings.
- View the date on which the Internet Radio List was last updated, determine whether the Radio List will be updated automatically or perform manual updates.

Before You Start

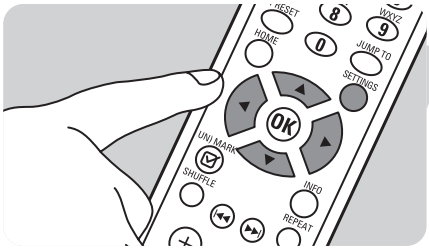
- The SLA5520 must be turned on.
- The wireless network must be available.
- The Internet must be available.

Configuration Menu Structure



Viewing Network Status Settings

For troubleshooting purposes, you can view various network status settings, as listed under the 'List of Network Status Settings'.



Use the remote control and follow these steps to display network status settings:

- 1 Press **SETTINGS** (X) to display the **Settings** menu.
- 2 Press ▼ until 'Device Status' is highlighted. Press ►.
- 3 To browse through the Network Status Settings, press ▲/▼.

Note: To change Device Status Settings, see 'Managing Network Profiles Using the Remote Control'.

List of Network Status Settings

Setting	Explanation
Device Name	Name of the SLA5520 device. Example: My SLA5520
Software Version	Version of the SLA5520 software in use.
Bootloader version	Version of the SLA5520 bootloader software in use.
Hardware version	Version of the SLA5520 hardware in use.
Network name (SSID)	SSID (Service Set Identifier) for the wireless network.
Network Type	Wireless network type: Infrastructure if the network uses an Internet Base station; Ad-hoc if the network uses a peer-to-peer connection and no Internet base station.
Security (Encryption)	Indicates whether encryption is enabled on the wireless network: 'None', 'WPA' or 'WEP'.
Wireless Signal Strength	Wireless network signal strength.
Wireless Channel	Wireless channel currently used by the SLA5520.
Unique product ID (MAC)	Physical MAC address of the SLA5520.
Automatic address (DHCP)	Dynamic IP address currently allocated to the SLA5520 by a DHCP server (if DHCP in use).
Software address (IP)	Static IP address currently allocated to the SLA5520 (if DHCP not in use).

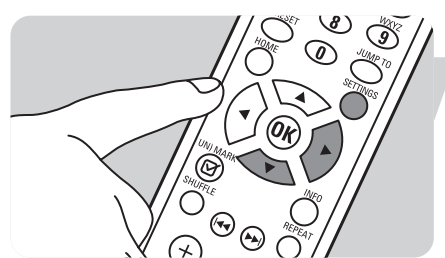
Subnet Mask	Subnet mask for the network to which the SLA5520 is connected.
Gateway IP	IP address of the gateway used by the SLA5520.
DNS Server Preferred	IP address of the preferred DNS server used by the SLA5520.
DNS Server Alternate	IP address of an alternate DNS server used by the SLA5520.
Proxy Server	Indicates whether or not traffic to and from the Internet must first pass through a proxy server (Disabled/Enabled).
Proxy Hostname	Name of the proxy server host computer to which the SLA5520 is connected.
Proxy Port	Port on the proxy server to which the SLA5520 is connected.

Managing Network Profiles

If there have been changes to your wireless network configuration since you installed your SLA5520, or if you are experiencing problems when using the SLA5520, you may need to change the network profile settings using the Configuration Wizard.

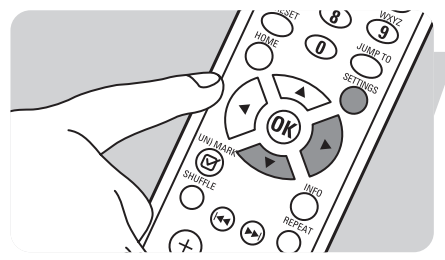
Note: Changing network settings requires some technical knowledge of how your wireless network is set up. If you are unsure of any of the settings, consult the person who set up your wireless network or refer to the appropriate network documentation.

Changing Settings for the Currently Active Network Profile



- 1 Press **SETTINGS** (X) to display the **Settings** menu.
- 2 Press ▼ (X) until 'Configuration Wizard' is highlighted. Press ►.
- 3 Now follow the steps under 'Changing Network Settings' to change the network profile settings for the currently active profile.

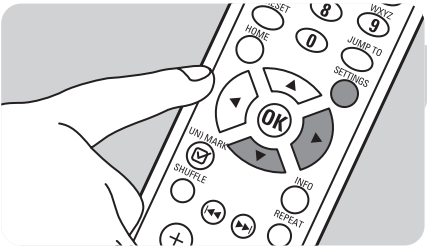
Changing your display menu language



- 1 Press **SETTINGS** (X) to display the **Settings** menu.
- 2 Press ▼ until 'Select Language' is highlighted. Press ►.
- 3 Select the desired display menu language.

Changing Settings for a Non-Active Network Profile

By default, any changes you make to network settings will be applied to the active profile (i.e. the profile that is currently loaded on the SLA5520). If you wish to make changes to a different profile, you must first turn on profile management.

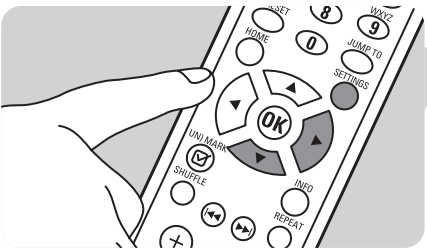


- 1 Press **SETTINGS** (X) to display the Settings menu.
- 2 Press ▼ until 'Advanced Settings' is highlighted. Press ►.
- 3 When 'Profile Management []' is highlighted, press ►.
- 4 When 'Enabled' is highlighted. Press ► to activate the setting [*].
- 5 Now follow the steps under 'Changing Network Settings' to change the network profile settings. You will be prompted to select the profile to be changed.

Note: If you want to make this profile the active profile for the SLA5520 follow the steps under 'Activating a New Profile on the SLA5520 Using Remote Control'.

Turning Profile Management Off

When you have made changes to non-active profiles, you can turn off Profile Management, as follows:



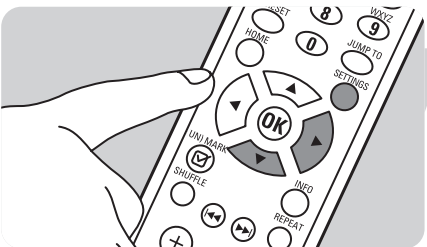
- 1 Press **SETTINGS** (X) to display the Settings menu.
- 2 Press ▼ until 'Advanced Settings' is highlighted. Press ►.
- 3 When 'Profile Management []' is highlighted, press ►.
- 4 Press ▼ until 'Disabled' is highlighted. Press ► to de-activate the setting [*].


Managing Multiple Key Indexes

The SLA5520 supports up to 4 Key Indexes for WEP security (encryption).

By default, Key Index 1 is used when a WEP code (Key) is entered.

However, if you wish to enter a code (key) against another Key Index, follow these steps:



- 1 Press **SETTINGS** (X) to display the Settings menu.
- 2 Press ▼ until 'Advanced Settings' is highlighted. Press ►.
- 3 When 'Key Management []' is highlighted, press ►.
- 4 When 'Enabled' is highlighted. Press ► to activate the setting [*].
- 5 Press ► to complete the change .
- 6 Now follow the steps under 'Changing Network Settings' to change the network profile settings. You will be prompted to select a 'Key Index' before entering the WEP key.
- 7 Ensure that you select 'Exit Key Editing' when you have finished, ~~and turn off 'Key Management' under 'Advanced Settings' when finished.~~

Activating a New Profile on the SLA5520 using Remote Control

A 'default' network profile is loaded automatically when you first install the SLA5520. However, you may wish to activate an alternative network profile that you have created using the Configuration Wizard ~~or the Philips Wireless Music Adapter PC Utility.~~

Follow these steps to activate a different network profile:

- 1 Press **SETTINGS** (X) to display the **Settings** menu.
- 2 Press ▼ until 'Select Profile' is highlighted. Press ►.
- 3 A list of available profiles is displayed. The currently active profile is denoted by an asterisk [*].
- 4 Press ▼ to highlight the desired profile. Press ►.
- 5 The message 'Selected Profile N...Applying Settings' will be displayed. After a few seconds, the SLA5520 will restart. The device is now ready to operate using the new profile.

~~Note: This function can also be performed using the Philips Wireless Music Adapter PC Utility—see 'Activating a Different Network Profile'.~~

Editing the Device Name

Your SLA5520 is given the default device name Philips SLA5520 during initial installation. Follow these steps to change the device name of your SLA5520:

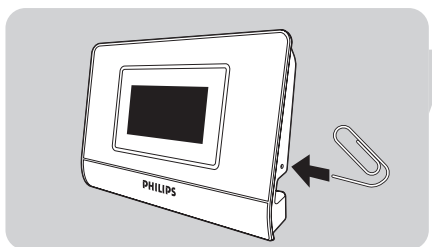
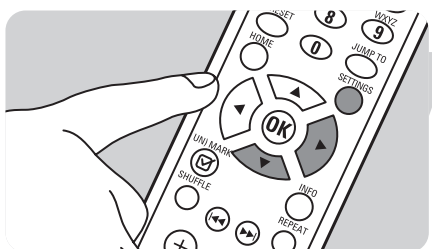
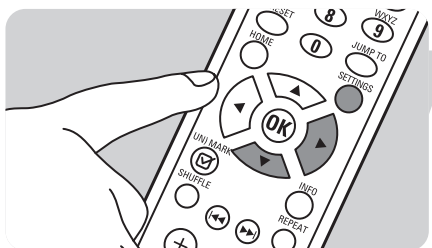
- 1 Press **SETTINGS** (X) to display the **Settings** menu.
- 2 Press ▼ until 'Advanced Settings' is highlighted. Press ►.
- 3 Press ▼ until 'Edit Device Name' is highlighted. Press ►.
- 4 Press ▼ until 'Change' is highlighted. Press ►.
- 5 Edit the name of your SLA5520 device (see 'Entering Text in Edit Mode'). Example: My SLA5520
- 6 Press ► to complete the change.

Performing a Hard Reset to Factory Settings

~~Under normal circumstances, you should reset the SLA5520 to its factory settings by activating the Factory Default profile using the Philips Wireless Music Adapter PC Utility (see 'Activating a Different Network Profile').~~

~~However, should this not be possible for some reason, you can perform a hard reset on the SLA5520 device itself, as follows:~~

- 1 Ensure that the SLA5520 is turned on.
- 2 Insert a paperclip into the small reset hole and hold the reset button down for 2 seconds to reset to ?????????????????????? or 5 seconds to reset to the factory set default settings..
- 3 Remove the paperclip and wait until the SLA5520 restarts.



Updating the Radio List

The Radio List is a database of Internet Radio stations stored on your SLA5520.

Your SLA5520 Radio List comes preconfigured with some Internet Radio stations. You may choose to subscribe to an Internet Radio List Service from an Internet service provider to add more stations to the list.

Note: Third party service providers may charge for subscription services or apply other conditions to the use of their services. It is your responsibility to check these conditions when subscribing.

Viewing the Radio List Version

The Radio List is updated automatically on a regular basis. See 'Updating the Radio List Manually' for a manual update.

Follow these steps to see when the last update occurred:

- 1 Press **SETTINGS** (X) to display the **Settings** menu.
- 2 Press ▼ until 'Internet Radio' is highlighted. Press ►.
- 3 When 'Radio List Version' is highlighted, press ►.
- 4 The time and date when the list was last updated is displayed in the format HH:MM YYYY-MM-DD.
- 5 Press ◀ to return to the Internet Radio settings.

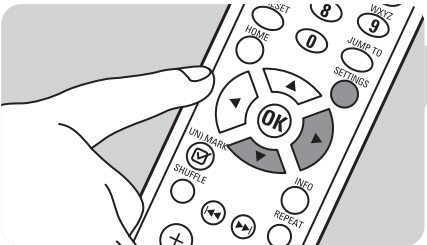


Disabling the Automatic Radio List Update

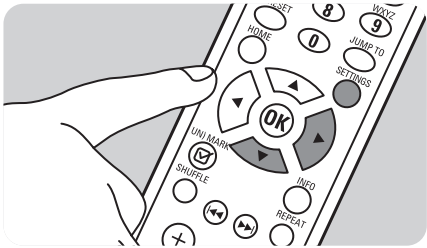
By default, the Radio List is automatically updated when the SLA5500 is connected to the Internet and has been idle for a period of 60 minutes.

However, if you need to perform a manual update, first follow these steps to disable the automatic update feature:

- 1 Press **SETTINGS** (X) to display the **Settings** menu.
- 2 Press ▼ until 'Internet Radio' is highlighted. Press ►.
- 3 Press ▼ until 'Automatic Update [*]' is highlighted. Press ►.
- 4 Press ▼ until 'No []' is highlighted. Press ► to change the setting to No [*].
- 5 Press ► to complete the change.



Note: If you turn off the automatic update, the Radio List will not change until you either reenables automatic update, or use the manual update method (see below).



Updating the Radio List Manually

You can perform a manual update of the Internet Radio List at any time.


1 First disable the automatic update (see 'Disabling the Automatic Radio List Update' above).

1 Press **SETTINGS** (X) to display the **Settings** menu.

3 Press ▼ until 'Internet Radio' is highlighted. Press ►.

4 Press ▼ until 'Manual Update' is highlighted. Press ►.

5 When the prompt 'Start Update?' is displayed, press ► to start the manual update.
> The LCD screen displays: 'Update in Prog'  'Please wait'.

Note: This function is not available if there is no Internet access available on the wireless network. The  button cannot be used while an update is being performed.

Re-enabling the Automatic Radio List Update

If the automatic update has been disabled (e.g. in order to perform a manual update) follow these steps to re-enable it:

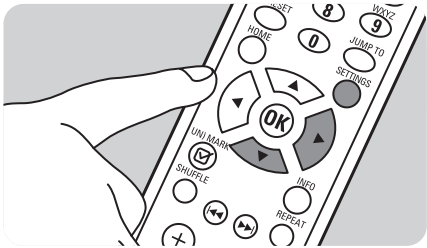
1 Press **SETTINGS** (X) to display the **Settings** menu.

2 Press ▼ until 'Internet Radio' is highlighted. Press ►.

3 Press ▼ until 'Automatic Update []' is highlighted. Press ►.

4 Press ► to change the setting to Yes [*].

5 Press ► to complete the change.



Advanced Configuration Using Philips Wireless Music Adapter PC Utility

The Philips Wireless Music Adapter PC Utility is software that runs on your computer. Most of the tasks it performs can just as easily be performed directly on the SLA5520 using the remote control.

However, there may be occasions when you would prefer to use the Wireless Music Adapter PC Utility.

This chapter describes how to do the following tasks:

- Start the Philips Wireless Music Adapter PC Utility
- Manage network profiles using the Philips Wireless Music Adapter PC Utility
- View existing network profiles
- Activate a different network profile for the SLA5520
- Edit a network profile
- Verify that a SLA5520 is available on the wireless network^{*)}
- Upload new software to the SLA5520 as it becomes available^{*)}

^{*)} These tasks can ONLY be performed using the Philips Wireless Music Receiver PC Utility.

Starting the Philips Wireless Music Adapter PC Utility

The Philips Wireless Music Adapter PC Utility is a software tool for managing the configuration of your SLA5520 from your PC.

Note: Before starting the utility, it must first have been installed on your system. For details see 'Installing the Philips Wireless Music Adapter PC Utility'.

To start the tool:

- From the Start menu, choose 'All Programs, Philips Wireless Music Adapter PC Utility'
- OR
- Open the WMRI.exe file in Windows Explorer under the folder where you installed the software (the default folder is 'Program Files\Philips\Wireless Music Adapter').

When the application opens, it automatically attempts to locate all available SLA5520 on your network, and displays those it finds in the available Wireless Music Adapters' list.

Note: If no network adapters are found, the following message will be displayed instead: 'No network Adapters found'. The Philips Wireless Music Adapter PC Utility could not find any suitable network adapters on your system. This program requires at least one suitable network adapter (wired or wireless).' If this occurs, please refer to 'Troubleshooting'.

Managing Profiles Using the Philips Wireless Music Adapter PC Utility

The SLA5520 is delivered out of the box, pre-configured with default settings. These settings are stored in the Factory Defaults network profile, which cannot be changed. However, other profiles are provided that you can edit to suit your wireless network.

There are two methods for managing profiles:

- A** Directly on the SLA5520 using the remote control
- OR-
- B** Using the Philips Wireless Music Adapter PC Utility.

Default Profile Settings

The SLA5520 is delivered with the following default settings:

SSID:- philips-
 IP address:- DHCP enabled-
 Proxy:- No-
 WEP:- disabled-
 Mode:- Infrastructure-

PROFILE 1:-

SSID:- philips-
 IP address:- DHCP enabled-
 Proxy:- No-
 WEP:- disabled-
 Mode:- Infrastructure-

Viewing Existing Network Profiles

To view existing network profile details:

- 1 From the main Philips Wireless Music Adapter PC Utility window, click on its name to select a Wireless Audio Link from the list and click the 'Profiles...' button.
- 2 The Factory Defaults profile is displayed. Click on the other tabs to display alternative profiles, if any. The currently active profile has the 'Make Active' button grayed out (disabled) and an 'Active Profile' icon in the top right corner of the screen.

Note: This task can also be done directly on the SLA5520 using the remote control – see 'Viewing Network Status Settings'.

Activating a Different Network Profile

To activate a different profile for a SLA5520:

- 1 From the main Philips Wireless Music Adapter PC Utility window, click on its name to select a Wireless Audio Link from the list and click the 'Profiles...' button.
- 2 Click on the appropriate profile tab and click the 'Make Active' button on that profile. Click the 'Close' button to return to the main window.
- 3 Click the 'Discover...' button. The SLA5520 should be displayed in the main panel.

Note: This task can also be done directly on the SLA5520 using the remote control. See 'Activating a New Profile on the SLA5520 Using Remote Control'.

Editing a Network Profile

The Factory Defaults profile for a SLA5520 cannot be edited. However, there are other profiles available that can be edited to effectively create new profiles. To change these settings, you will need to have some knowledge of your wireless network setup.

Note: The alternative profiles can be edited at any time, but any existing information in the selected profile will be overwritten once the profile has been edited and saved.

- 1 Display the profile to be edited (see 'Viewing Existing Network Profiles').
- 2 Give your profile a unique Profile Name.
- 3 Enter the Service Set ID (SSID) for your wireless LAN.
- 4 By default, the profile will use the Infrastructure network type (i.e. an Internet base station is available on the network). If however you select the Allow ad-hoc connection checkbox, it means that your PC will use a direct peer-to-peer connection to the SLA5520 and no Internet connection is available. Internet Radio will not be supported with this option.
 - If you are using WEP encryption on the wireless network, click the WEP-enabled checkbox and enter the appropriate WEP key and the Key index.
 - If you are using a proxy server, check the Use proxy server checkbox. Enter the Proxy server as an IP address (example 192.167.0.10) or as a name (example my.proxy). The Proxy port number must be a numeric value (usually, this is port 80 or 8080).
- 5 If the SLA5520 will get a dynamic IP address automatically from a DHCP server, select the Use DHCP checkbox.
- 6 If the SLA5520 needs a fixed IP address, leave the Use DHCP checkbox unchecked and enter the IP Address for the SLA5520, as well as the Netmask (Subnet mask), and IP addresses for the Gateway, DNS Server Preferred and DNS Server Alternate.
- 7 Click the 'Apply' button to confirm the changes, or click the 'Refresh' button to discard the changes.
- 8 If you want to make this profile the active profile for the SLA5520, click the 'Make Active' button. Click the 'Close' button to return to the main window.
- 9 Click the 'Discover...' button to verify that the SLA5520 can still be found on the network after you make these changes.

Note: This task can also be done directly on the SLA5520 using the remote control.

~~Verifying that a Wireless Music Link is Available on the Network~~

~~When you start the Philips Wireless Music Adapter PC Utility, it performs an automatic discovery process to verify which Wireless Music Links are available on the network. It is recommended that you perform this discovery process manually after editing any network profiles, to ensure that your computer can still communicate with the SLA5520.~~

~~To verify that a SLA5520 is available on the network:~~

- ~~† From the main Philips Wireless Music Adapter PC Utility window, click the 'Discover...' button.~~

~~A list of available Wireless Music Links will be displayed in the main window.~~

Uploading New Software to the SLA5520

When a software update is available on the Internet, this will automatically be displayed on the LCD screen.




- Press **OK (X)** if you wish to update the SL5520 software.
 - > The LCD screen displays 'Please wait. Product updating'. A progress bar shows how the update is progressing.
 - > When the update is completed, the SLA5520 will restart automatically. The LCD screen displays 'Product is restarting'.

Notes:

- In the **Settings** menu you can always check yourself if updates are available. If this is the case, this will be displayed on the LCD screen. If the SLA5520 is already fully updated, the LCD screen shows 'Your product is up to date'.
- Some software updates are mandatory and cannot be refused. In this case the LCD screen displays 'Software update required. Press OK to start update'.

Problem	Possible Cause
Date/time is not displayed when the SLA5520 is switched on.	<ul style="list-style-type: none"> <li data-bbox="582 259 703 282">• Solution <p data-bbox="582 322 775 344">Power unavailable.</p> <ul style="list-style-type: none"> <li data-bbox="582 353 1481 414">• Check that the SLA5520 power cable is properly connected and that the power is switched on. <p data-bbox="582 450 991 472">SLA5520 is not known to the network.</p> <ul style="list-style-type: none"> <li data-bbox="582 481 1465 573">• Check that the MAC address for the SLA5520 has been entered correctly in the wireless network's MAC Access Control. Turn off the Wireless Music Adapter and turn it on again. <p data-bbox="582 609 791 631">Internet unavailable.</p> <ul style="list-style-type: none"> <li data-bbox="582 640 1430 663">• Check that the Internet base station has an active connection to the Internet. <p data-bbox="582 698 1015 721">Wireless network incorrectly configured.</p> <ul style="list-style-type: none"> <li data-bbox="582 730 1473 857">• Open the SLA5520 Wireless Music Adapter PC Utility and select the Wireless Music Link that has the problem. Click the 'Profiles' button and check that the active profile is correctly configured for your network. Turn on the SLA5520 and ensure that the correct profile has been selected under Network Profiles. <p data-bbox="582 893 1098 916">'Internet Connection Sharing' not enabled on PC.</p> <ul style="list-style-type: none"> <li data-bbox="582 925 1465 1016">• If your connection to the Internet is made available via a single PC, that PC must enable 'Internet Connection Sharing' in order to display the clock on the LCD screen. See 'Enabling Internet Connection Sharing on Your PC'.
The SLA5520 does not react to remote commands and hangs in the UPnP Menu structure.	<p data-bbox="582 1055 1334 1077">This can be caused by network delays when sending out UPnP requests.</p> <ul style="list-style-type: none"> <li data-bbox="582 1086 1461 1146">• Make sure the SLA5520 is connected to the power supply and that the batteries in the remote control are fresh and inserted correctly. <p data-bbox="619 1155 1437 1211">Wait a few seconds and try again. If the problem persists, unplug the Wireless Music Adapter, wait a minute, plug it in again and then turn it on again.</p>
Unable to browse music files.	<p data-bbox="582 1245 1114 1267">No music files in the Media Manager Music Library.</p> <ul style="list-style-type: none"> <li data-bbox="582 1276 1469 1337">• Follow the instructions under 'Installing Philips Media Manager' to add files to the MusicLibrary. <p data-bbox="582 1373 895 1395">Media Manager is not running.</p> <ul style="list-style-type: none"> <li data-bbox="582 1404 1477 1464">• Start the Philips Media Manager server by clicking the Media Manager icon in right side of the Windows task bar on your computer.
Unable to play music file	<p data-bbox="582 1503 1406 1525">File has been moved or deleted but link is still in Philips Media Manager library.</p> <ul style="list-style-type: none"> <li data-bbox="582 1534 1477 1662">• The Philips Media Manager library stores a link to a music file, not the file itself. If you move or delete the music file and do not delete it or reselect it in the Philips Media Manager Library, the SLA5520 will be unable to locate the file. Open Philips Media Manager and delete and/or add the track from the correct file location. <p data-bbox="582 1697 1034 1720">File permissions on music file are incorrect.</p> <ul style="list-style-type: none"> <li data-bbox="582 1729 1469 1816">• Check that you have read access to the music file on the computer where it is stored. If this is on a computer other than the UPnP server computer, check that the network connection between these two computers is active.
Presets do not work anymore after a new CD is ripped or a server is reset.	<p data-bbox="582 1850 1445 1910">There are limitations regarding the presets, depending on the PC Server tool used (for example Philips Media Manager, EZ Server, Intel, Mediabolic).</p> <ul style="list-style-type: none"> <li data-bbox="582 1919 1465 1977">• The PC server software may not be fully compatible with the UPnP specification. There is no workaround other than storing the presets again.

Cannot connect to an Internet Radio station after pressing  and an error is displayed.

You are connected to a station that is running, but it is not currently broadcasting any music.

- Try again later or choose another station.

The buffer is full (everything else seems normal).

- Wait a few seconds until the buffer clears. If the problem persists, turn off the **Wireless Music Adapter** and turn it on again.

Station is not up.

- Try looking up the station's Web site to see if there are any changes. Try a different Internet Radio station.

There is a VPN (Virtual Private Network) running on your PC.

- Disable the VPN while running the SLA5520.

Warning: this may adversely affect other programs and data - proceed with caution.

The Internet base station and the PC are not on the same subnet.

- The Internet base station and the PC must be on the same subnet.

The Internet base station has a MAC filter enabled.

- Add the MAC address of the SLA5500 to the exception list.

Your PC is running a third party software firewall that is preventing access to Internet Radio.

- Traffic to/from the SLA5500 must be enabled for the media server program. Change your firewall settings to enable multicast messages for the media server program. If the above solution does not work, disable the firewall for troubleshooting purposes.

Warning: this may adversely affect other programs and data - proceed with caution.

Your PC is using the Microsoft built-in firewall.

- Traffic to/from the SLA5500 must be enabled for the media server program. Change your firewall settings to enable multicast messages for the media server program. (239.255.255.xxx). If the above solution does not work, disable the firewall for troubleshooting purposes.

Warning: this may adversely affect other programs and data - proceed with caution.

Your PC uses a Microsoft packet filter.

- Disable the packet filter for troubleshooting purposes.



Warning: this may adversely affect other programs and data - proceed with caution.

Your PC uses a static IP address and therefore does not access a DHCP server.

- Use a different network profile that allows for a fixed IP address. See 'Activating a New Profile on the SLA5500 Using Remote Control'.

After accessing an Internet Radio station, the device does not playback other Internet Radio stations.

- Turn off the SLA5500 and turn it on again.

A lock icon  is displayed instead of a  music note icon.

Windows Media Connect has not yet detected the capabilities icon of the SLA5520.

- Online help: www.philips.com/support.

Not possible to browse Windows Media Connect server content.

- Check your firewall settings: 'UPnP Framework' should be allowed to send and receive data.

SLA5520 Error Code

The SLA5520 LCD screen may display the following error code in the event of a problem.

Error Code Explanation

Update	Please wait. The Internet Radio station list is updated automatically from the Internet on a regular basis or when you choose to do a manual update. Play mode does not work during this update.
Favorite list full.	The favorite Playlist is limited to 20 items. Replace an existing item with the new item. See 'Replacing Favorite Items' for details.
Connection down.	Connection between PC and SLA5520 lost. ?????????? Restart PC and SLA5520. ??????
Server or network connection problem.	??????????
No more users allowed..	Remove users in order to be able to add new users. Settings menu (sub-menu 'User settings').

The following is a list of terms and abbreviations used in this document.

Term or Abbreviation	Meaning
AES	Advanced Encryption System. A symmetric key encryption (security) technique that provides strong encryption (security) in various environments: standard software platforms, limited space environments, and hardware implementations.
Base station (BS)	A device used to provide common wireless access to the Internet.
CD-ROM	Compact Disk - Read Only Memory. An optical disk used to store computer data.
DHCP	Dynamic Host Configuration Protocol. Used by a server to assign IP addresses to network devices.
DNS	Domain Name Server. A server that converts domain names to IP addresses.
Gateway	A device that connects two networks, for example a local area network to the Internet.
IP Address	Internet Protocol Address. A unique 32-bit logical number assigned to a device on the Internet. An IP address can be static (fixed) or dynamic (assigned by a DHCP server on connecting to the network).
Key Index	Number used to identify a particular encryption key in a list of several encryption keys supported by a wireless network.
ISP	Internet Service Provider. Company that provides the service that allows you to connect to the Internet.
LCD	Liquid Crystal Display. A flat panel screen used to display characters.
MAC address	Media Access Control Address. A unique physical number assigned to device on a network, in the format of a 48-bit hexadecimal number.
MP3	MPEG Audio Stream, Layer 3. An ISO/IEC standards-based audio file format developed by the Moving Pictures Experts Group (MPEG).
PC	Personal Computer. In the context of this document, can also refer to a laptop device.
Proxy	A proxy server sits between the client and the Internet. It can retrieve requested files from its own cache or from a remote server. It is also used in conjunction with a firewall and gateway to enhance security on a network.
RCA	A standard connector plug used to connect a device to an audio device.
SSID	Service Set Identifier. A 32-character identifier attached to packet headers sent over a wireless network that uniquely identifies the wireless LAN to which the device is attempting to connect.
Subnet Mask	Sub-network mask. A subset of a network (that consists of multiple devices) that has its own unique subnet number.
UPnP	Universal Plug and Play. Allows automatic discovery and control of networked devices and services.
Wireless Music Link	A device that connects wirelessly to a PC and the Internet to allow music files and Internet radio to be played over an audio system.
Philips Wireless Music Adapter PC Utility	Wireless Music Adapter PC Utility Software that allows you to configure the SLA5520 from the PC.

TKIP	Temporal Key Integrity Protocol. TKIP utilizes a strong encryption (security) method and incorporates Message Integrity Code (MIC) to provide protection against hackers.
WEP	Wired Equivalent Privacy. An encryption method that provides security for 802.11 wireless network systems using a 64 or 128 bit key.
WMA	Windows Media Audio. An audio file format developed by Microsoft.
WPA	Wi-Fi Protected Access. It is a recent specification which provides stronger security than WEP via enhanced encryption (security) and user authentication. There are two encryption (security) options for WPA: TKIP and AES. See 'TKIP' and 'AES'.

Common Firewall Configurations

This chapter contains details on how to configure some common firewall programs in order to ensure correct SLA5520 operation.

As this information is likely to change when new versions of firewalls are released, you should check your firewall documentation for the most recent information.

Windows XP Service Pack 2 Firewall and Philips Media Manager

When Windows Firewall notifies you about Philips Media Manager (which is called 'LaunchAnywhere GUI' or 'Media Management for your Media Devices'), select 'Unblock'.

IMPORTANT: If you are using a wireless gateway or base station and there is a firewall in place, multicast messages must be enabled for the media server program in order to allow traffic to/from the SLA5520 (239.255.255.xxx).

Technical Information

The SLA5520 is designed to comply with the following standards.

Electromagnetic Compatibility	USA: FCC CFR47 Part 15B, Class II Europe: 89/336/EEC, ETS 301 489-1&17(2.4GHz) EN61000-3-2 (Harmonic AC current emissions) EN55022 Class II, EN50082-1 (Immunity) Japan: VCCI Class II
Product Safety	CB (IEC60950)
Radio Regulations	USA: FCC CFR47 Part 15C, para 15.247, 205, 209 Europe EN 300 328 Japan: ARIB STD-T66 (Chan I-13), T-33(Chan I4) Canada IC RSS 210
Dimensions (h x w x d):	110 x 160 x 44 mm
Power consumption / standby power:	4.5 Watt / 2 Watt
Weight:	240 grams
Supported codecs:	Audio: WMA-DRM, WMA, MP3, WAV
Output connectors:	Audio: 1/8" connector to 2 x L/R stereo (cinch)
Wireless:	802.11g
Networking:	Universal Plug & Play

Specifications are subject to change without notice.

Guarantee certificate
Certificat de garantie
Garantieschein
Garantiebewijs

Certificado de garantia
Certificato di garanzia
Certificado de garantia
Εγγύηση

Garantibevis
Garanticertifikat
Garantibevis
Takuutodistus



year warranty
année garantie
Jahr Garantie
jaar garantie
año garantia
anno garanzia

χρόνος εγγύηση
år garanti
år garanti
år garanti
vuosi takuu
año garantia

Type: **SLA5520**

Serial nr: _____

Date of purchase - Date de la vente - Verkaufsdatum - Aankoopdatum - Fecha de compra - Date d'acquisto -
Data da aquisição - Ημερομηνία αγοράς - Inköpsdatum - Anskaffelsesdato - Kjøpedato - Oatopäivä -



Dealer's name, address and signature
Nom, adresse et signature du revendeur
Name, Anschrift und Unterschrift des Händlers
Naam, adres en handtekening v.d. handelaar
Nombre, direccion y firma del distribudor
Nome, indirizzo e firma del fornitore

Όνοματεπώνυμο, διεύθυνση και υπογραφή του εμπ. προμηθευτή
Återförsäljarens namn, adress och signatur
Forhandlerens navn, adresse og underskrift
Forhandlerens navn, adresse og underskrift
Jälleenmyyjän nimi, osoite ja allekirjoitus
Nome, morada e assinatura da loja

CE 0682 

Specifications are subject to change without notice.
Trademarks are the property of Koninklijke Philips Electronics N.V. or their respective owners.
2005 © Koninklijke Philips Electronics N.V. All rights reserved.

www.philips.com

PHILIPS