

User Manual

Bluetooth Stereo Headset



Thank You	002
- Box content	
Overview	002
Getting Start	003
- Charge battery	
- Power On	
- Pairing	
- Volume Control	
Use with mobile phone.....	005
- Pairing	
- To make a call	
- To receive a Call	
- To reject a Call	
Use with computer device	006
Important Information	007
French	010
German.....	018
Spanish	026
Italian	034
Dutch	042
Portuguese.....	050
CE Statements	058
FCC Safety Statements	058
Warranty	059

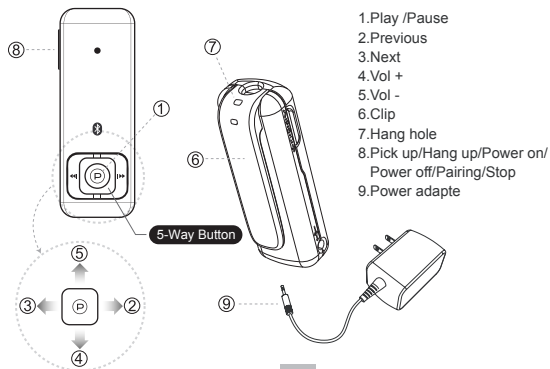
Thank you

Thank you for purchasing the Bluetooth Stereo Headset. The headset is designed for audio device users to have a digital stereo sound and a wireless operating range up to 10 meters. Please read the instruction manual to make the best use of the headset. We hope you will enjoy the digital stereo sound and the power of Bluetooth wireless technology.

Box content

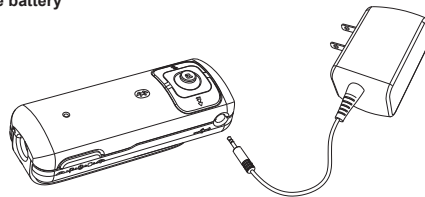
- Bluetooth Stereo Headset
- Power Adapter
- User Manual

Overview



Getting Start

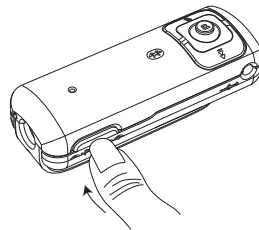
1 Charge battery



Note:

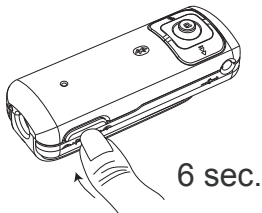
For the first time use, it takes 4 hours to fully charge the batteries and 2 hours afterward. With the batteries fully charged, the working time is around 6.5 hours and the standby time is around 230 hours.

2 Power On



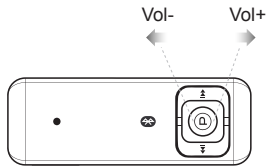
- Use the power button to turn on the power

3 Pairing



- Press and hold the pairing button on the Stereo Headset for 6 seconds until the blue and red LEDs flash alternately. This device name is set to be "Bluetooth Stereo Headset". If you are asked to enter pin-code during pairing, please enter 1234.
(Note: The "1234" is default pin-code pre-stored in this Stereo Headset.)

4 Volume Control



- Use the volume buttons on the Stereo Headset to adjust volume.

Use with mobile phone

1 Pairing

Press and hold the pairing button on the Stereo Headset for 6 seconds to set the Stereo Headset into pairing mode. The blue and red LEDs will be flashing when the Stereo Headset is in pairing mode. To properly perform pairing procedure on your mobile phone, please refer to the user manual of your mobile phone for its own pairing instruction. This device name is set to be "Bluetooth Stereo Headset". If you are asked to enter pin-code during pairing, please enter 1234.
(Note: The "1234" is default pin-code pre-stored in this Stereo Headset.)

2 To make a call

- Dial out the number from your mobile phone.
- Voice is automatically transferred to the headset.

3 To receive a Call:

1. When there is an incoming call, press the answer button to answer the call and the audio channel will be switched to the mobile phone.

2. Press the Volume control button to adjust the volume.

3. When finish talking, press the answer button to end the call and the audio channel will be switched back to the audio device.

Note:

To have music streaming, make sure your mobile phone supports Bluetooth Stereo functions

4 To reject a Call

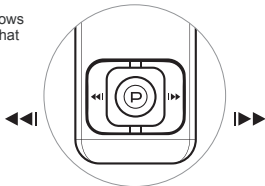
- Press the reject button on the mobile phone to reject a call.

Use with computer device

Without the Stereo Adapter, the Stereo Headset can be used with PC, Notebook or PDA that support Bluetooth Stereo functions (A2DP Profile) for Stereo Sound Streaming.

Music playback

The Stereo Headset provides a track wheel that allows music playback on Windows Media Player in PCs that support Bluetooth Stereo functions.



Note:

- "A2DP profile" is required to support stereo sound.

Use with audio player and mobile phone at same time.

1. The Stereo Headset needs to be paired and connected with both devices.
2. When there is an incoming call, a notice tone will be played from the Stereo Headset.
3. Users can press the answer button on the Stereo Headset to answer the call or press the reject button on the mobile phone to reject the call.

Important Information

Product care

- Use of non-original accessories may result in performance deterioration, injury, products damage, electronic shock, and warranty termination.
- Attempt to disassemble your Stereo Headset or stereo adapter may damage it, and the warranty will be void.
- Always store the Bluetooth Stereo Headset with the power turned off.
- Avoid exposing the Bluetooth Stereo Headset to direct sunlight or other heat source.
- Do not expose the Bluetooth Stereo Headset to water or other liquids.

Children

Please keep the Stereo Headset and stereo adapter away from children, as the small parts may cause choking hazard.

Battery Information

- New batteries
 - For time first time use, please charge the battery for at least 4 hours.
- Battery care
 - Only qualified Service Centers are authorized to remove or replace the battery.
 - The rechargeable battery has a long service life if treated with care.
 - The battery can only be charged in a temperature range of -10C to 45C.
 - The battery capacity may be reduced if operating in a cold environment.

About Pairing

What is pairing?

Pairing is a process of associating Bluetooth devices with each other. It will establish a permanent security link between the devices and enable quick access to the services provided without the need to enter passkeys.

Bluetooth Passkey

The Bluetooth Stereo Headset has a default passkey 1234 for pairing, which is stored in its internal memory. Usually you are required to enter the passkey 1234 in a pairing process with a Bluetooth mobile phone or other devices; however it depends on the kind of Bluetooth device that the Stereo Headset is connected to. Please refer to the users' manual of the devices for the specific operation.

Note:

The paired devices remain paired even when both of the devices are powered off, or when a service connection is interrupted or stopped.

FAQ

1. Can I change Bluetooth passkey?
No, the Bluetooth passkey is written into the device when it manufactured and cannot be changed.
2. Can I use Stereo Headset with audio device and mobile phone at same time?
Yes, the Stereo Headset can be used with audio device and mobile phone at same time. However, there could be some compatibility issues on certain brands of models of mobile phones.
3. Can I use Stereo Headset while it is in charging mode?
No, the Stereo Headset cannot be used while it is in charging mode.
4. What is the operating range of Bluetooth Stereo Headset?
The operating range of Bluetooth Stereo Headset is up to 10 meters.
5. How come the track control does not work with my MP3 player?
The track control is a special feature designed for Windows Media Player. It doesn't apply to MP3 player because most of MP3 players do not support such functions.

Troubleshooting

1. The track control is not working.
 - The track control is designed for Windows Media Player only.
 - Make sure that you are using Windows Media Player.
2. Music is on and off when the Stereo Headset is paired with audio device/pc and mobile phone.
 - When you try to use Stereo Headset and audio device / pc at same time, there could be some compatibility issues on certain brands of models of mobile phones. However, this problem shouldn't occur when use Stereo Headset with single device.

CE Statements

This device has been tested and found to comply with the requirements set up in the council directive on the approximation of the law of member states relating to EMC Directive 89/336/EEC, Low Voltage Directive 73/23/EEC and R&TTE Directive 99/5/EC.

FCC Safety Statements

This device complies with Part 15 of the FCC rules. Operation is subject to the following two conditions:

- (1) This device may not cause harmful interference.
- (2) This device must accept any interference received, including interference that may cause undesired operation.

The radiated output power is far below the FCC Radio frequency exposure limits. Nevertheless, this device should be used in such a manner that the potential for human contact during normal operation is minimized.

Warning: Changes or modifications made to this equipment not expressly approved by the manufacturer. May void the FCC authorization to operate this equipment.

Important! Please note the following:

This equipment has been tested and found to comply with the limits for a Class B digital device, pursuant to part 15 of the FCC Rules. These limits are designed to provide reasonable protection against harmful interference in a residential installation. This equipment generates, uses and can radiate radio frequency energy and, if not installed and used in accordance with the instructions, may cause harmful interference to radio communications. However, there is no guarantee that interference will not occur in a particular installation. If this equipment does cause harmful interference to the radio or television reception, which can be determined by turning the equipment off and on, the user is encouraged to try to correct the interference by one or more of the following measures:

- Reorient or relocate the receiving antenna.
- Increase the separation between the equipment and receiver.
- Connect the equipment into an outlet on a circuit different from that to which the receiver is connected.
- Consult the dealer or an experienced radio/TV technician for help.

Copyright and Trademark Notices

Copyright 1998-2005 Cellink Co. Ltd. All rights reserved. The Cellink logo is trademark of Cellink Co. Ltd in Taiwan and may be registered in other countries. All other products are trademarks or registered trademarks of their respective owners and hereby recognized as such. All specifications are subject to change without prior notice.

Warranty

The manufacturer warrants that the Bluetooth Stereo Headset shall conform to her published specifications, which may be subject to change, and remain free from defects in materials and workmanship under normal, proper and intended use within warranty time, provide that proof of purchase be furnished with any returned equipment.

During the warranty period, if any component part of the equipment becomes defective by reason of material or workmanship, the manufacturer is immediately notified of such defect. The manufacturer shall supply a replacement part or request return of equipment, freight prepaid, and its designated facility for repair. In the event that no fault is found on a product returned for repair, the manufacturer reserves the right to charge the customer its standard published repair charge.

This warranty shall not apply to any product that has been subject to misuse, bending, twisting, neglect, alteration, improper installation, operation outside of the parameters of the published specification, use in any non-approved countries or unauthorized repair performed by anyone other than a designated repair facility. Any non-warranty repairs or maintenance shall be at the manufacture's standard in effect at the time.

This warranty is in lieu of all other warranties, whether expressed, implied, or statutory, including but not limited to, implied warranties or merchantability and fitness for a particular purpose. In no event shall the manufacturer be liable, whether in contract, in tort, or on any other basis, for any damage sustained by its customers or any other person arising from or related to loss of use, failure or interruption in the operation of any products, or delay in maintenance, or for incidental, consequential, indirect, or special damages or liabilities, or for loss of revenue, loss of business, or other financial loss arising out of or in connection with the sale, lease, maintenance, use, performance, failure, or interruption of these products.