

**User Manual
Model : F1**



PIQS Virtual Touch Projector

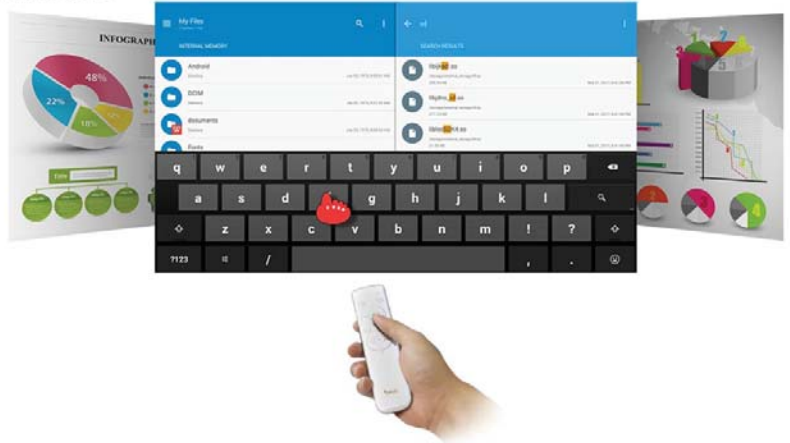
FCC ID:2ALH2-PFAF100
IC:22519-PFAF100

a Virtual Touch Remote Control







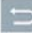

"OK" Key:

Hold the remote and point to the screen, a cursor will be appeared and it moves as you move your remote. Press "OK" to select certain App and function or drag the screen page on certain background or Apps.

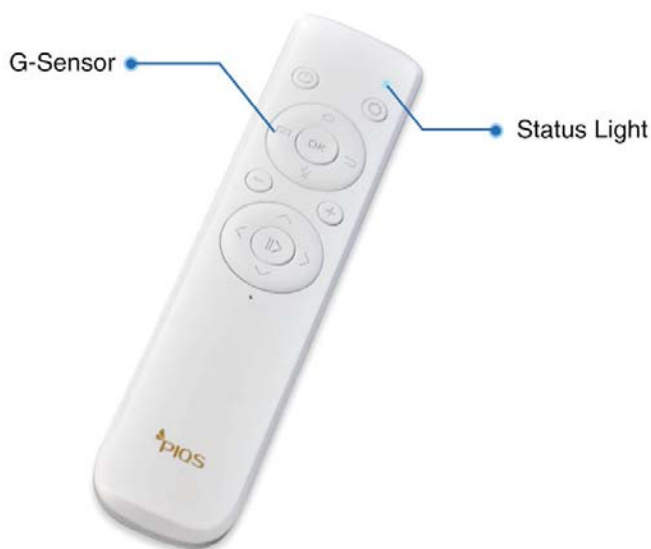


b Remote Control



-  **On/Off:** When the unit is on, press once to select “Sleep” mode, “Reboot” or “Power Off”.
You can also turn on the unit by pressing this key when the unit is connected to the power supply.
-  **Shortcut:** Press to select different shortcut features.
-  **App Menu:** Submenu for certain App. (Please refer to another page for G-Sensor).
-  **Home:** Return to the main screen.
-  **Back:** Return to the previous section or exit.
-  **Volume:** Control the volume up/down. (Please refer to another page for Remote Pairing).

C G-Sensor and Status Light



G-Sensor: Press and hold until “G-Sensor On” shown on screen or turn G-Sensor off by pressing and holding it.

This is useful when some App or game require directional control by tilting the remote control to right or left.

Status Light: 1) Blue blinks when it is operating.

2) Red blinks when the battery is low.


3) Red lights when it is under charging.

4) Blue lights when it is fully charged.

5) During pairing with the unit, blue blinks continually and becomes steady for 2s if it is paired. Pairing notice will be shown on screen.

d Picture Zoom In and Out

Picture Zoom

- 1) Press "Shortcut"  and select Picture Zoom, an icon shown on screen.
- 2) Press & hold "OK" on the remote, then move it left/right to zoom in/out.



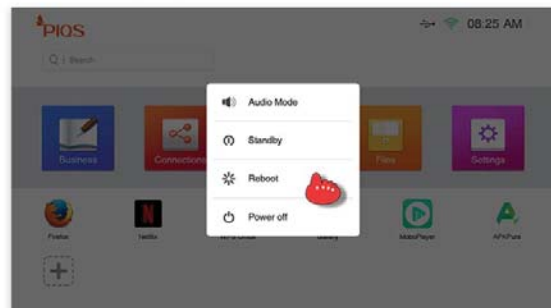
e Speaker, On/Off, Standby



Volume: Control volume up or down.

On/Off/Standby:

- 1) When the projector is on, press this key to select Audio Mode / Standby / Reboot / Off.
- 2) Audio Mode – Projector enters audio mode.
- 3) Sleep – Under “Sleep” mode, you can restart the unit by pressing “On/Off” on remote.
- 4) Power Off – Select Off to turn off the unit.

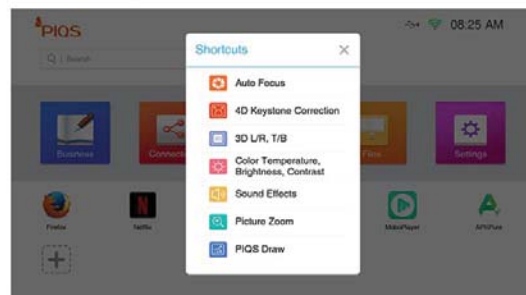


f Shortcut Key



Shortcut – A quick way to access useful features.

- Auto Focus – Press to start Auto Focus.
- 4D Auto Keystone – Select manual, auto or turn-off auto keystone.
- 3D – During video playback, you can switch to 3D L/R or 3D T/B depending on your source of video. (3D glasses is not provided).
- Color Temp, Brightness, Contrast – You can adjust here simply.
- Sound Effects – You can select different sound effects while playing music or videos.
- Picture Zoom (Please refer to previous page).
- PIQS Draw – A versatile built-in feature to draw/highlight anything on screen during presentation or picture viewing. (For details, please refer to Manual under "Business" App on home screen.



9 Charging your Remote Control



i) By external power adaptor (not provided). Output: DC 5.0V, 1A

ii) By supplied USB Charging cable. (Cable color maybe different)



h Pairing your remote control with the projector



Supplied remote has been paired with the projector, if you want to pair a new remote or reset the old one, please follow this instruction.

Hold your remote control close to the projector, press and hold the volume key (+) and (-) at the same time for 3 seconds. Then, pairing starts and status light on remote blinks until pairing is shown on screen.

*If you cannot pair it, make sure your surroundings do not have many Bluetooth/WiFi devices working which may interfere the pairing process.

a Power On



Plug in the socket with our supplied adapter, status light is on, then press and hold the power button until it is on.

b USB Slots



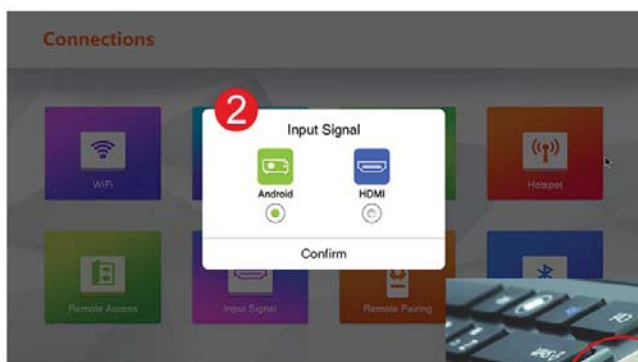
The unit has two external slots for USB which you can playback photos, videos or documents directly. Open those files depending on the Apps installed.

Once USB is inserted, the unit can detect automatically with notice shown on screen.

Reminders:

- The reading speed of USB depends on the transfer rate of your media.
- When the USB is working, do not power off or plug out the socket from the unit.
- If it is failed to read the files, please restart the unit again.

C HDMI Slot



HDMI:

- 1) Connect our projector to other devices such as laptop, PS4 or Xbox via HDMI cable.
- 2) Select "Input Signal" on "Connection" Page, then select HDMI.
*Please note the default input signal is the projector unit, if you select HDMI, it will change to HDMI when you use the projector next time. However, you can still change it back into projector signal if the projector cannot detect HDMI signal next time.



d Audio-Out



Audio-out slot is suitable for all headphone with 3.5mm jack, connect it to the audio-out slot with your headphone/earphone.

Reminder :

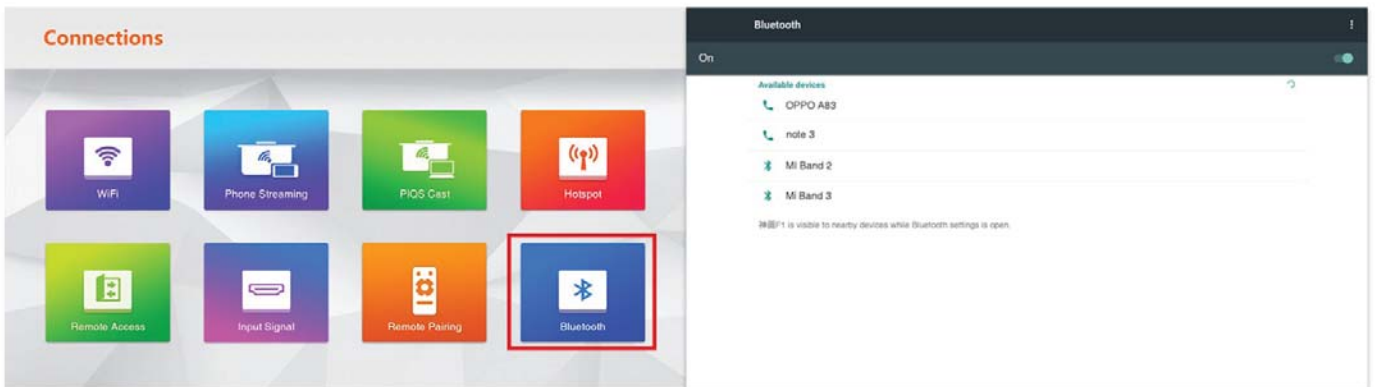
Please connect the headphone jack to audio-out slot before putting on your headphone to avoid possible loud volume hurting your ears.

e WiFi Connection



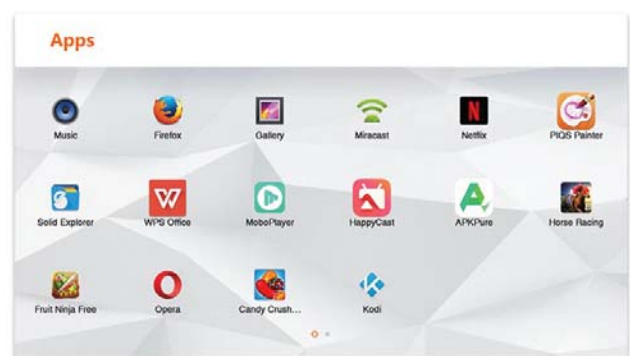
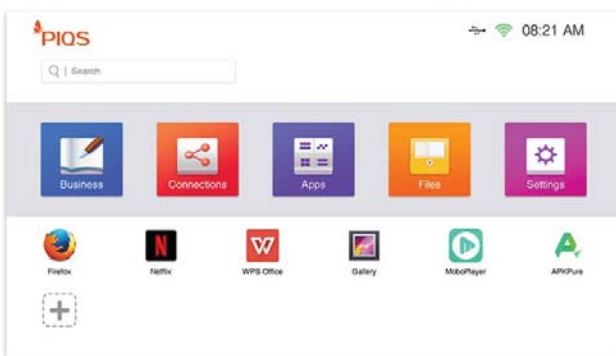
- 1) Quick Start: Home > Connections > WiFi
OR
- 2) Go to Settings > Advanced Settings > WLAN

f Bluetooth Connection



- 1) Quick Start: Home > Connections > Bluetooth
- OR
- 2) Go to Settings > Advanced Settings > Bluetooth

a Apps Download & Installation



You can download your desired Apps by 2 ways:

i) Go to Internet by opening installed Apps such as Opera, then search for public website for Apps download.

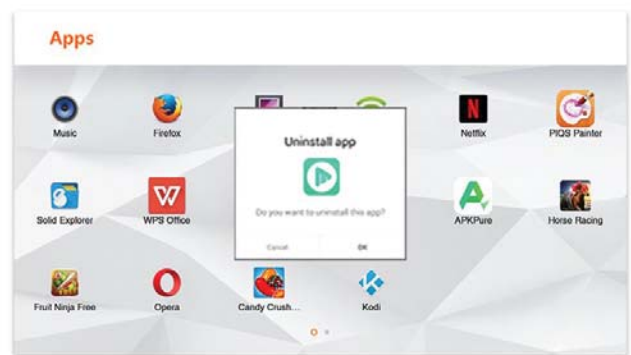
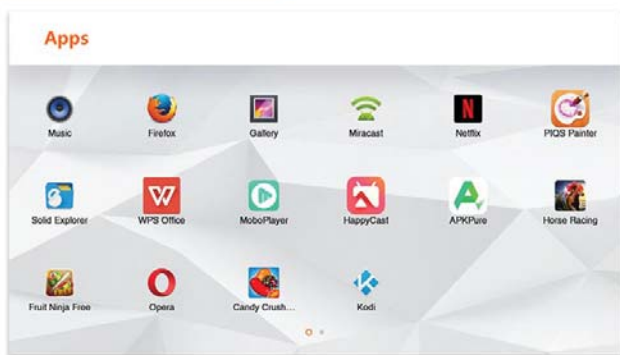
OR

ii) We have provided Apps store such as APKPure, open those Apps in Home Screen > Apps, then find out your desired Apps to install.

*Although this unit supports most of the Apps, we cannot guarantee all Apps downloaded are installable or usable.

We suggest consumers try different version of Apps or download from different website if they face this issue.

b Apps Uninstallation



Uninstall Apps:

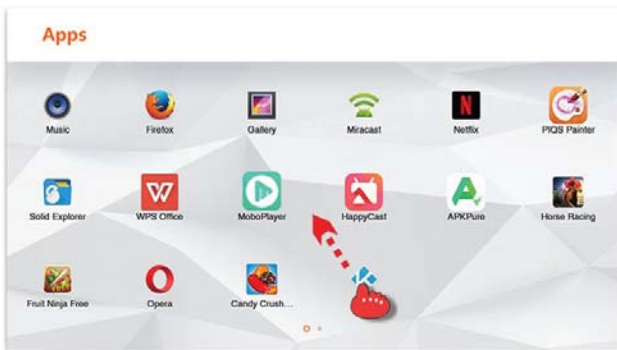
- On Home screen, select "Apps".
- Select the App you want to uninstall,
- Long press "OK" and drag it to the rubbish bin on the top of screen.
- Follow the instruction to uninstall the App.

*Certain Apps cannot be uninstalled because they were built into the system memory.

C Grouping Apps

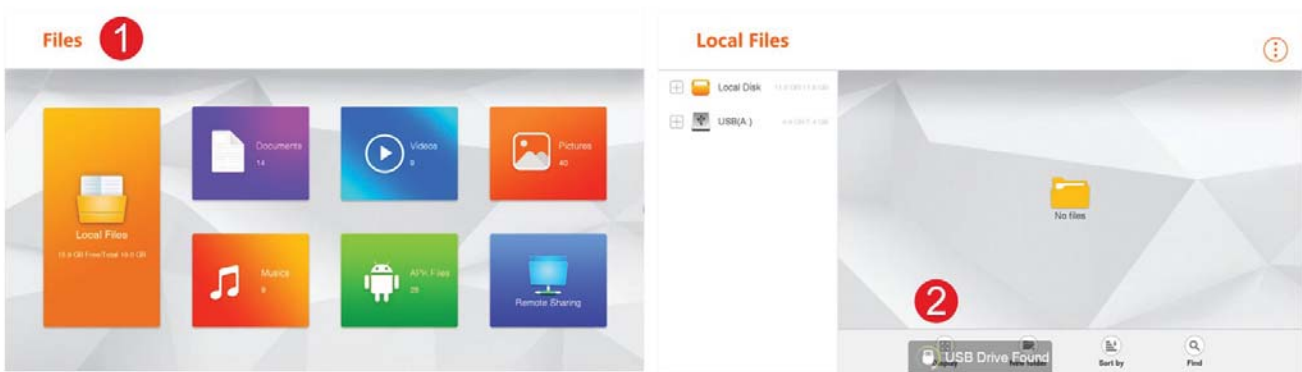
Go to Home Screen >Apps

- Group two or more Apps into a single folder by long pressing "OK" on selected App.
- Drag the App to another App that you want to group together.



- A folder appears and you can change the folder name.
- Doing the same procedure, you can ungroup certain App in the folder.

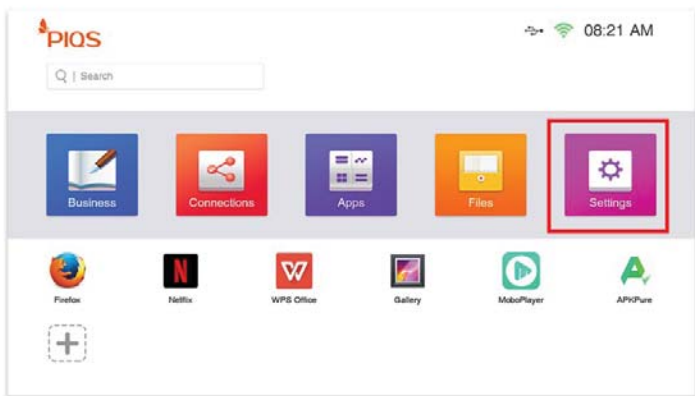
d) File Manager using USB Drive



1) On Home Screen click "File" and enter File Manager.

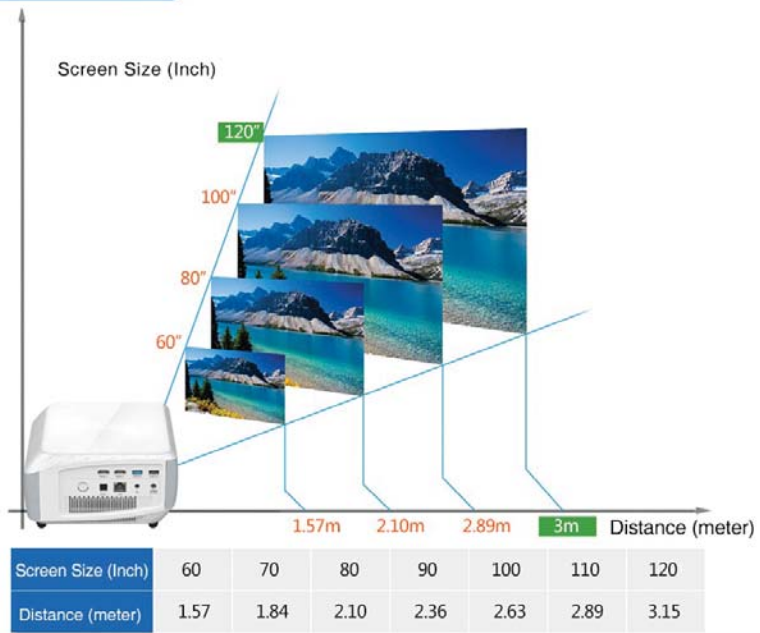
2) Insert USB drive and it will be detected, and you can access files from your USB drive directly.

a Display Settings



Go to Home Screen > Settings > Display
You can either go to Advanced Settings under Settings to select appropriate features.

b Projection Distance and Screen Size



C System Upgrade

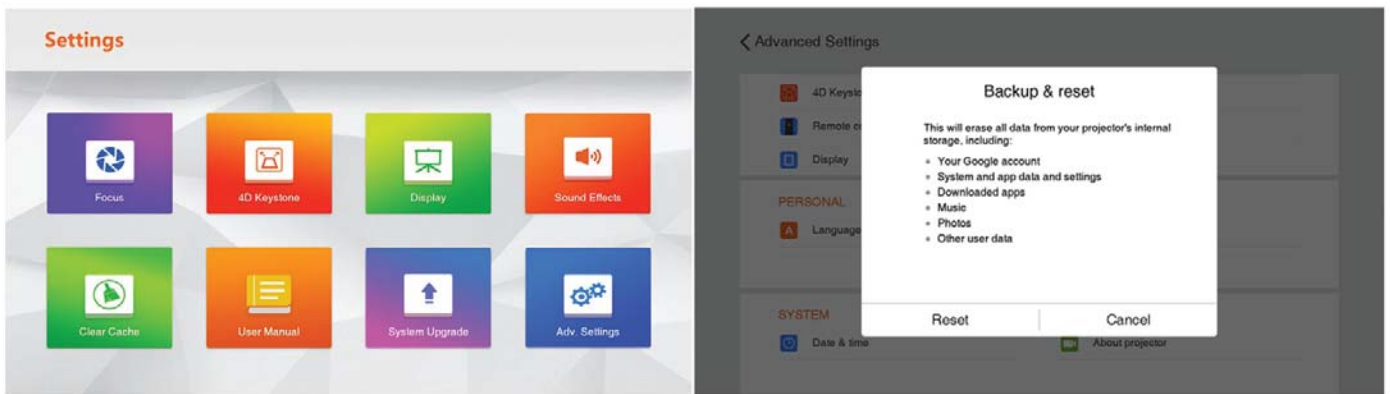


1) Go to Home > Settings > Select System Upgrade and follow the instructions

Reminder:

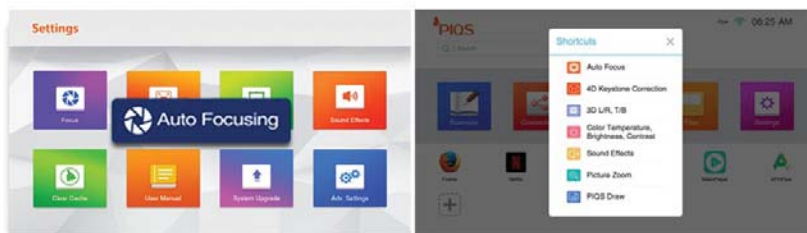
- Please keep power plug connected.
- The unit may download (Wi-Fi), install and restart several times in order to complete the upgrade.

d Restore to Default Settings



- 1) Go to Home > Settings
- 2) Select Advanced Settings
- 3) Scroll down to the "Backup & Reset" and select it.

a Auto Focus – Our Patent Technology



Auto Focus feature will be triggered when it detects motion of the unit. When the unit is on, autofocus need some time to adjust a clear picture and you will see "Autofocusing" on the screen. For instance, if you hold the projector up & down while it is on, the autofocus will automatically start.

You can instantly turn on the auto focus by pressing "Shortcut" on the remote. Either way, you can adjust the focus manually or disable it under the Advanced Setting menu.

* Do not obstruct any object in front of the lens or if the screen surface is too bright or rough surface, it will affect the performance of the autofocus function.

* Virtual Touch Remote function will be stopped temporarily when the unit is Auto Focusing.

Before



After

2S
Auto

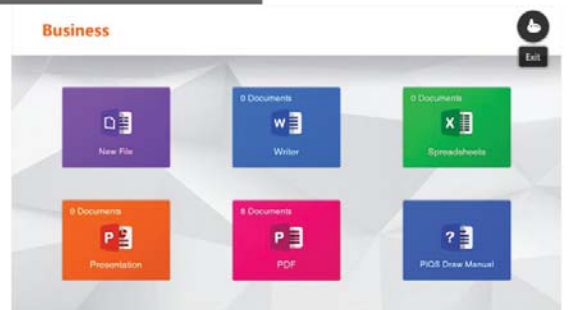
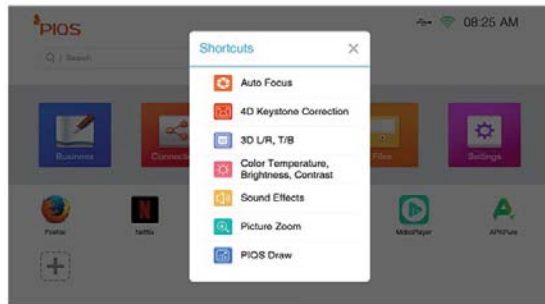


Auto Focus US Patent No: US 9420245 B2

b) PIQS Draw

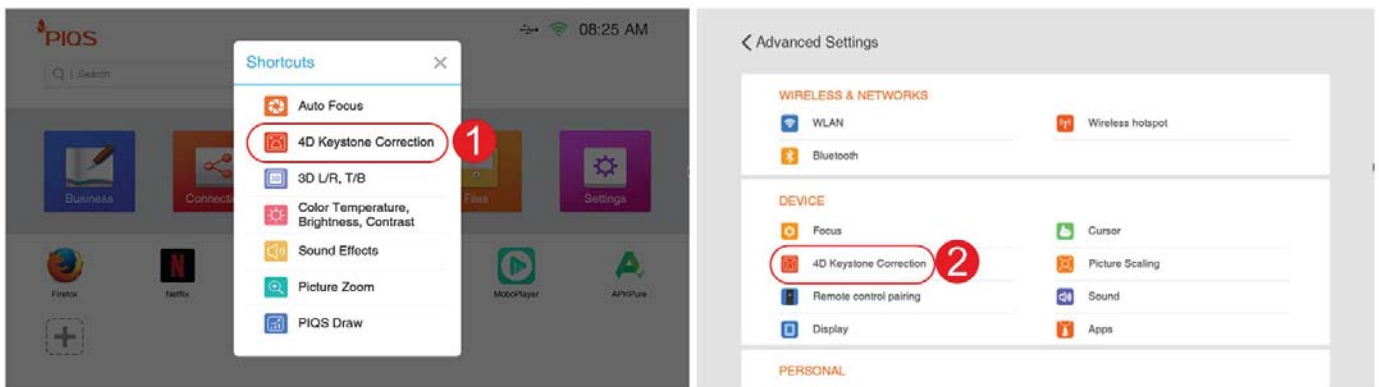


Shortcut



- 1) Press the "Shortcut" key on remote.
- 2) Select PIQS Draw
- 3) A pointer on the right-hand corner shown, you can switch between pointer and drawing feature if necessary. This is exceptionally useful for business presentation or highlighting/drawing areas on screen.

C 4D Auto Keystone

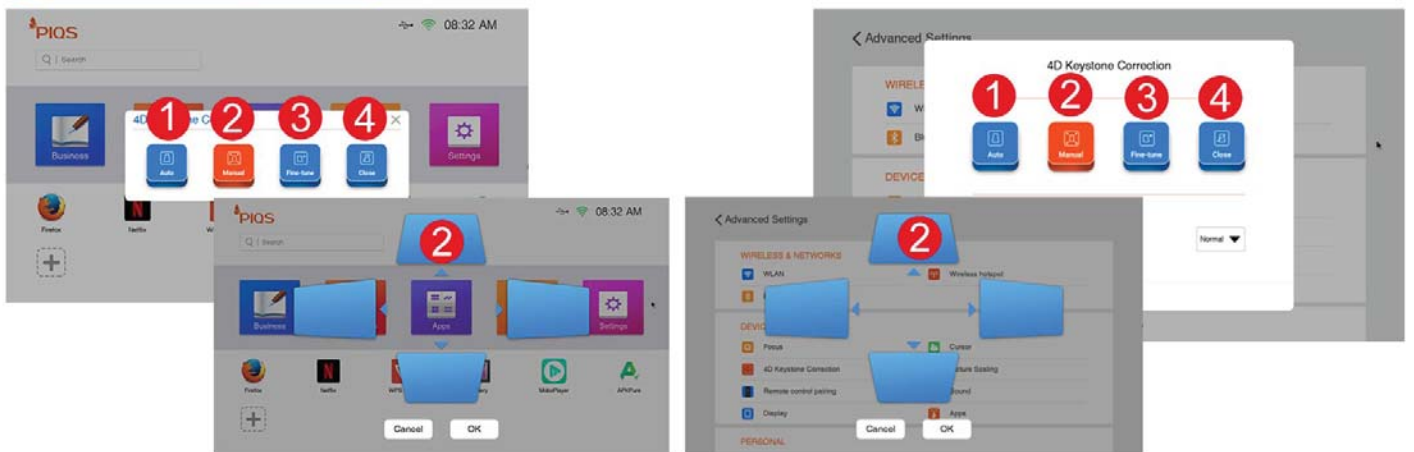


1) Press the "Shortcut" key on remote and select "4D Auto Keystone"

Or

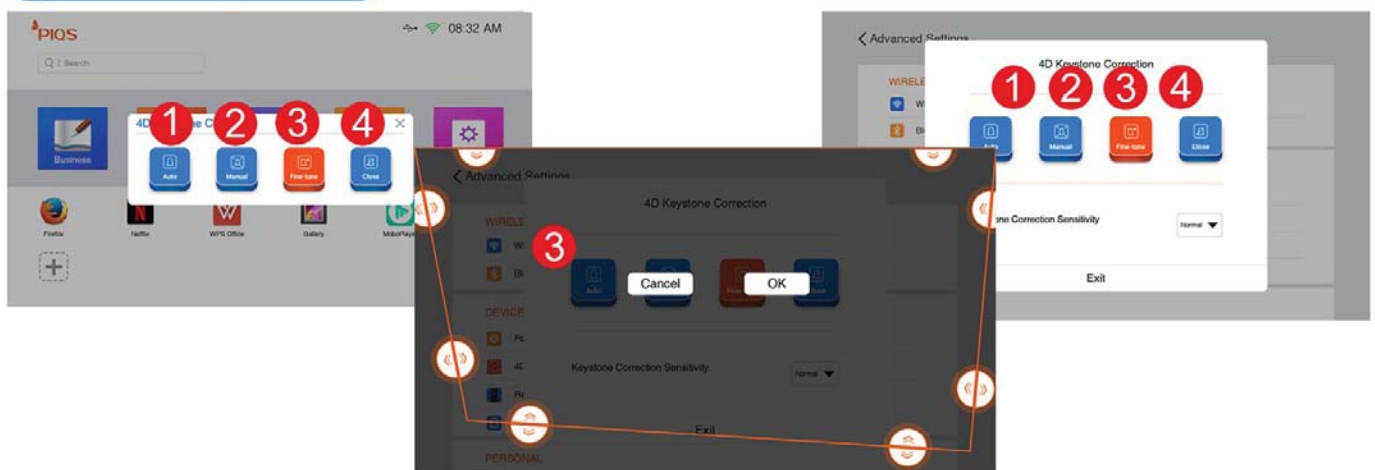
2) Go to Home > Settings > 4D Auto Keystone

d 4D Auto Keystone



- 1) Auto Mode: Auto keystone will start at once and hence it will restart if the unit is put to project on different angles or the unit is restarted.
- 2) Manual Mode: You can manually adjust 4 different angles and hence auto keystone will not restart if the unit is put to project on different angles or the unit is restarted.

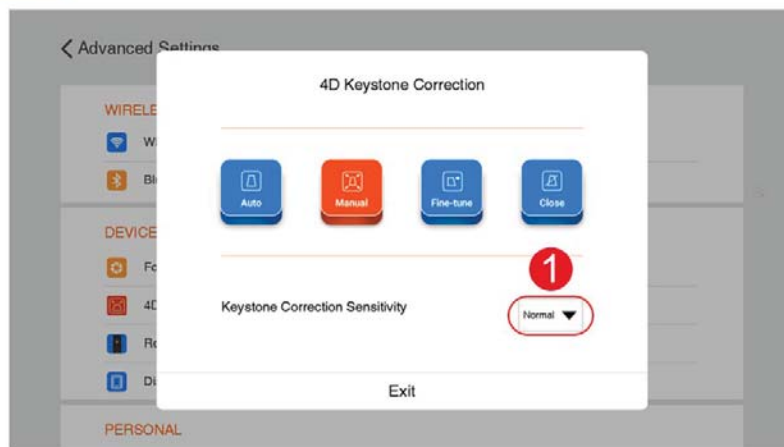
e 4D Auto Keystone



3) Finetune: Use remote pointer to adjust manually on the arrow signs.

4) Close: Revert to original setting and hence auto keystone will not restart if the unit is put to project on different angles or the unit is restarted.

f 4D Auto Keystone

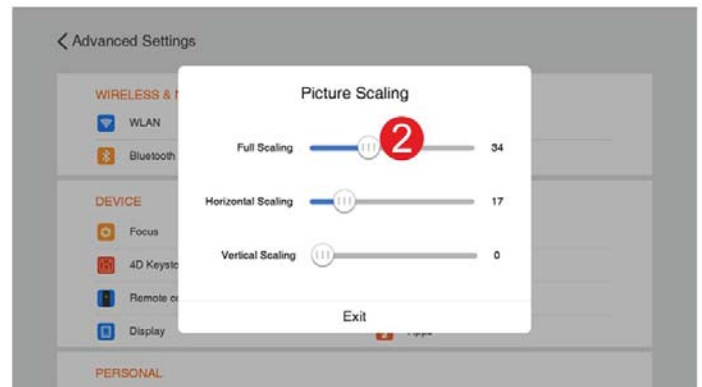
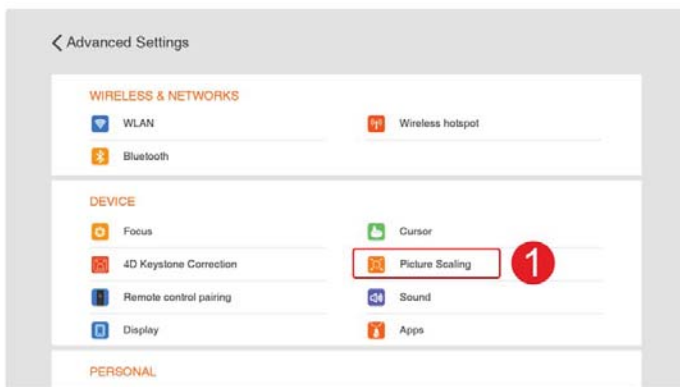


1) Advanced Adjustment

Select to adjust the sensitivity of triggering 4D Auto Keystone feature. Please do not block the screen image or projector front lens during keystone is activated.

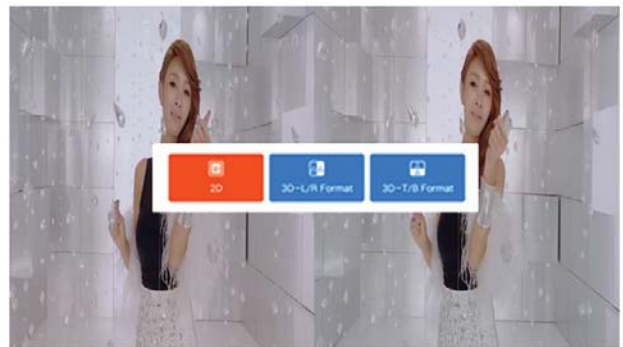
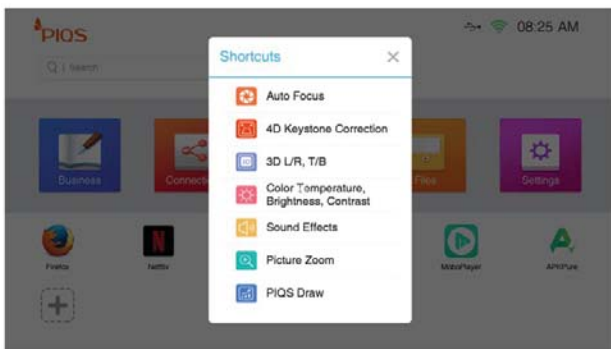
* 4K Auto Keystone only supports the Front Display mode.

9 Picture Scaling



- 1) Go to Home > Settings > Advanced Settings > Picture Scaling
- 2) Select the suitable options and adjust easily by moving the bar.

h 3D



- During video play, you can switch to 3D L/R or 3D T/B depending on your source of video. (3D active glasses is not provided).
- Press "Shortcut" on the remote
- Select 3D L/R or 3D T/B depending on your source of video
- To return to 2D, press "Shortcut" and select "2D"

*Make sure your sourced video is 3D capable and use 3D active glasses.

Care of the Projector

Your projector needs little maintenance. Keep it clean for best performance.

Never remove any parts of the projector.

Cleaning the lens

- Clean the lens by a canister of compressed air to remove dust.
- If there is dirt or smears, use lens-cleaning soft cloth with lens cleaner to gently wipe the lens surface.
- Never rub the lens with abrasive materials.

Cleaning the Projector Case

- Before you clean the case, turn the projector off and unplug the power cord.
- To remove dirt or dust, wipe the case gently with soft cloth.
- Never use wax, alcohol, benzene, thinner or other chemical detergents.

Vent Maintenance

- If dust collects on the vents, remove them by a soft cloth.

If a problem occurs that cannot be corrected with the instructions in this user manual (see also the help below), or contact us.

Problem	Solution
The projector does not turn on.	Make sure the power cord of the projector is plugged into the wall power AC inlet. Charge the battery for some time and restart.
The image is blurred.	Shake the unit a bit and trigger the Auto Focus feature. Restart the unit. On Advanced Settings, turn off Autofocus, and then turn on manual focus to adjust. After that, turn on the autofocus again.
Cannot see the remote controller pointer on the screen, or the pointer is flicking.	Avoid using the projector in sunlight and a bright light environment. Charge your remote controller. Hold and point the remote to the screen without blocking by any obstacle. Repair the remote controller by pressing "Volume (+) & (-) for 5 seconds close to the projector. The status light on the remote blinks first and remains lighted later. During autofocus/auto keystone, the remote is temporarily stopped.
Cannot connect to Wi-Fi.	Make sure the projector is in the range of Wi-Fi network. Check the password is correct. Restart the unit.
No sound	Check the volume on the remote controller. Check your source media or your volume control on streaming device.
No picture after connecting to other devices through HDMI slots.	Check you have connected the correct cables, HDMI is detected automatically. Check the App which plays the video or image support the media or not. Check the resolution of your connected device or try different resolution setting in your device.
3D is not working	Make sure your 3D glass is active shutter type which is battery powered. Make sure your source media supports DLP Link 3D Ready.

Model	PIQS F1
Operation System	Android 5.1
CPU	Cortex A5 Quad-Core, 1.8GHz, Mali Quad-Core GPU, 2GB system on board
Internal Memory	16GB
Control Interface	Virtual Touch Interactive by G-sensor remote controller
Projection System	DLP 0.47" DMD
Native Resolution	Full HD 1920 x 1080
Maximum Resolution	Support up to 4K
Brightness	Up to 1200 Lumens
Dynamic Contrast Ratio	10000:1
Aspect Ratio	16: 10 Native
Display Color	Full 16.7 million color palette
Projection distance to Projection Image Size	1m to 38 inches, ; 5m to 185 inches (Image size is diagonal)
Throw Ratio	1.2 (100% off-set)

Model	PIQS F1
Light Source	3LED (RGB)
Light Life	30,000H
Focus	Autofocus by image capture camera or Digital Adjustment
Keystone	Auto Vertical/Horizontal Keystone $\pm 40^\circ$
Wireless	Wi-Fi 802.11 ac/b/g/n , Bluetooth 4.1
Input Terminals	HDMI x 2, USB 2.0 x 1, USB 3.0 x 1, SPDIF x 1, LAN x 1
Output Terminals	Audio jack (3.5mm) x 1 10W Speaker x 2
Battery (Remote)	Remote : 1000mAh, Standby - up to 4 weeks, running up to 30 hrs
On-Screen Display Language	Selectable under android system
Power supply	19V DC 6.32A (100-240V AC 50-60 Hz)
Power Consumption (w)	120W
Unit Dimensions	8.26 x 7.87 x 4.13 inch (210 x 200 x 105 mm)
Net weight	5.07 lb / 2.3kg (Main Unit)
Accessories	Power Adapter / Virtual Touch Remote controller / Quick Start Guide / HDMI Cable USB Charging cable for remote
	*Specifications are subjected to change without further notice.

Virtual Touch Projector

Model: F1

FCC ID: 2ALH2-PFAF100

IC: 22519-PFAF100

WARNING:

This device complies with part 15 of the FCC Rules. Operation is subject to the following two conditions:

(1) This device may not cause harmful interference, and

(2) This device must accept any interference received, including interference that may cause undesired operation, changes or modifications not expressly approved by the party responsible for compliance could void the user's authority to operate the equipment.

NOTE:

This equipment has been tested and found to comply with the limits for a Class B digital device, pursuant to part 15 of the FCC Rules. These limits are designed to provide reasonable protection against harmful interference in a residential installation.

This equipment generates, uses and can radiate radio frequency energy and, if not installed and used in accordance with the instructions, may cause harmful interference to radio communications. However, there is no guarantee that interference will not occur in a particular installation.

If this equipment does cause harmful interference to radio or television reception, which can be determined by turning the equipment off and on, the user is encouraged to try to correct the interference by one or more of the following measures:

- Reorient or relocate the receiving antenna.
- Increase the separation between the equipment and receiver.
- Connect the equipment into an outlet on a circuit different from that to which the receiver is connected.
- Consult the dealer or an experienced radio/TV technician for help.

Changes or modifications made to this equipment not expressly approved by (manufacturer name) may void the FCC authorization to operate this equipment

Operating Temperature: -20° C to 40° C

This device is in compliance with the essential requirements and other relevant provisions of Directive 2014/53/EU. All essential radio test suites have been carried out.

1. The device complies with RF specifications when the device used at 20mm from your body.
2. The product shall only be connected to a USB interface of version USB2.0
3. Adapter shall be installed near the equipment and shall be easily accessible.
4. The plug considered as disconnect device of adapter.

Model: ADP-120ZB BB

Input: Input: AC100~240V, 50-60Hz,2.0A

Output: 19VDC 6.32A

Care for the environment! Must not be discarded with household waste!

RF Secification:

Function	Operation Frequency	Max RF outputpower.	Lim it
BLE	2402MHz ~ 2480MHz	5.58dBm	20 dBm.
BT(BR+EDR)	2402MHz ~ 2480MHz	GFSK:3.77dBm	20 dBm.
WIFI 802.11b/g/n(HT20)	802.11b/g/n(20MHz): 2412~2472MHz;	802.11n20: 18.57dBm	20 dBm.
WIFI 802.11a/n(HT20, HT40)/ac(HT20,H T40,HT80)	802.11a/n/ac(20MHz): 5180MHz~5240MHz 802.11n /ac(40MHz): 5190MHz~5230MHz 802.11ac(80MHz):5210MHz	802.11ac20:19.76 dBm;	23 dBm.

This product can be used across EU member states.



IC Caution - Attention IC

This device complies with Industry Canada license-exempt RSS standard(s).


Operation is subject to the following two conditions:

- 1.this device may not cause interference,
- 2.and this device must accept any interference, including interference that may cause undesired operation of the device.

Le présent appareil est conforme aux CNR d'Industrie Canada applicables aux appareils radio exempts de licence. L'exploitation est autorisée aux deux conditions suivantes:

- 1.l'appareil ne doit pas produire de brouillage, et
- 2.l'utilisateur de l'appareil doit accepter tout brouillage radioélectrique subi, même si le brouillage est susceptible d'en This Class B digital apparatus complies with Canadian ICES-003.

Cet appareil numérique de la classe B est conforme à la norme NMB-003 du Canada.

 **PIQS** is a trademark of Butterfly Technology (Shenzhen) Limited. Other trademarks are the properties of their respective owners. Values, weights and dimensions are approximate. Specifications are subject to change without prior notice.

Disclaimer

The information in this document is subject to change without notice. The manufacturer makes no representations or warranties with respect to the contents hereof and specifically disclaim any implied warranties of merchantability or fitness for any particular purpose. The manufacturer reserves the right to revise this publication and to make changes from time to time in the content hereof without obligation of the manufacturer to notify any person of such revision or changes.

Android is a trademark of Google Inc.

DLP is a trademark of Texas Instruments Inc.

All other product names used in this manual are the properties of their respective owners.

Butterfly Technology (Shenzhen) Limited.

Address: 6F Building 1, No. 35 Cui Jing Road, Pingshan New District, Shenzhen, 518118, P.R.C.

Tel: 86-755-86139000 Fax-755-86139206 E-mail: global@butterflytechnology.com

www.piqs.com