

clarisonic™

skin care brush  
the new wave to clear skin

[www.clarisonic.com](http://www.clarisonic.com)



clarisonic™

skin care brush  
the new wave to clear skin

user guide



K  
r



f  
C





clarisonic™

the new wave to clear skin

Dear CLARISONIC™ Owner –

Thank you for purchasing the CLARISONIC Skin Care Brush. We at Pacific Bioscience Laboratories are excited to share our product with you and hope that you enjoy using it.

We've designed CLARISONIC to work with the natural elasticity of the skin, gently flexing the skin to help open the pores and loosen dirt and oil. The back and forth sonic oscillating motion of the inner brush effectively cleans, clarifies, and stimulates the skin to give you the most effective and most gentle cleansing possible. We think it's the best minute you can give your skin every day.

We'd love to hear how CLARISONIC works for you. E-mail me at [CEO@clarisonic.com](mailto:CEO@clarisonic.com), or call us at 1-888-5-CLARISONIC (1-888-525-2747).

Sincerely,

David Giuliani

CEO, Chairman  
Pacific Bioscience Laboratories, Inc.

## contents

- 3 your CLARISONIC
- 4 important cautions and warnings
- 5 important safeguards
- 6 using your CLARISONIC
- 9 caring for your CLARISONIC
- 11 troubleshooting
- 13 warranty

For more information on CLARISONIC use and maintenance, as well as product updates and releases, please visit us at [www.clarisonic.com](http://www.clarisonic.com).

This manual and additional information are also available online for your convenience.





- A** charger cradle
- B** handle
- C** brush head
- D** power button
- E** green light  
indicating charge
- F** yellow light  
indicating power level
- G** brush heads  
**sensitive**  
(white plastic base)  
**normal**  
(gray plastic base)
- H** daily cleanser

## your clarisonic

Congratulations! You are about to experience the new wave of skin care with the CLARISONIC™ Skin Care Brush. Before you start, please take the time to get to know your CLARISONIC and how it works.

The CLARISONIC sonic technology works synergistically with the natural elasticity of the skin to provide gentle daily cleansing as part of a total skin care routine.

A deep-cleansing zone ① is created between the outer (stationary) brush and the inner (oscillating) brush ②. Oscillating back and forth at a sonic frequency that produces about 300 movements per second, a flexing action is created between the outer and inner brushes that works deep within the pores to loosen dirt and oil. The brush motion effectively cleans, clarifies and stimulates, resulting in smoother feeling and looking skin.



## IMPORTANT CAUTIONS AND WARNINGS

The CLARISONIC is designed for use with most skin types. Your skin is constantly changing, and due to the dynamic nature of your skin you may want to use different power levels and/or different brush heads (Normal vs. Sensitive). Please visit our website [www.clarisonic.com](http://www.clarisonic.com) for more information.

**Do not** use this product if you:

- have heightened skin allergies
- have an extreme sunburn
- have open wounds or open lesions
- have recently had a chemical peel or microdermabrasion\*
- are currently taking medication that can cause skin sensitivity\*
- have recently had facial cosmetic surgery\*

\*Unless recommended by a skin care professional

We recommend that you use the CLARISONIC Daily Cleanser that has been optimized for gentle daily use with the CLARISONIC Skin Care Brush. If you decide to use another cleanser, test it with the CLARISONIC Skin Care Brush on your forearm prior to using it on your face. Some cleansers with acids may irritate your skin when used with the CLARISONIC Skin Care Brush.\*\*

The CLARISONIC Daily Cleanser is to be used on the skin. **Do not** use on the eyes or the interior of the mouth. If contact with the eyes occurs, rinse thoroughly with water.

**Do not** use the CLARISONIC Skin Care Brush with mechanical exfoliants such as microbeads and shells.\*\*

\*\*Consult your skin care professional.

Using the CLARISONIC to remove makeup will stain the bristles, but will not affect performance. **Never** use the CLARISONIC to remove eye makeup. If discoloration occurs, clean the brush head with soap and water.

**NOTE:** This equipment has been tested and found to comply with the limits for a Class B digital device, pursuant to Part 15 of the FCC Rules. These limits are designed to provide reasonable protection against harmful interference in a residential installation. This equipment generates, uses and can radiate radio frequency energy and, if not installed and used in accordance with the instructions, may cause harmful interference to radio communications. However, there is no guarantee that interference will not occur in a particular installation. If this equipment does cause harmful interference to radio or television reception, which can be determined by turning the equipment off and on, the user is encouraged to try to correct the interference by one or more of the following measures:

Reorient or relocate the receiving antenna.

Increase the separation between the equipment and receiver.

Connect the equipment into an outlet on a circuit different from that to which the receiver is connected.

Consult the dealer or an experienced radio/TV technician for help.

## IMPORTANT SAFEGUARDS

When using electrical products, especially when children are present, basic safety precautions should always be followed, including the following:

### READ ALL INSTRUCTIONS BEFORE USING

**DANGER—To reduce the risk of electrocution:**

- 1 Do not** use the CLARISONIC charger cradle while bathing.
- 2 Do not** place or store the CLARISONIC charger cradle where it can fall or be pulled into a tub or sink.
- 3 Do not** place the CLARISONIC charger cradle in or drop into water or other liquid.
- 4 Do not** reach for a CLARISONIC charger cradle that has fallen into water. Unplug immediately.
- 5 Do not** plug into an incorrect voltage source outlet. Use only with appropriate voltage.
- 6** Keep the cord away from heated surfaces.

**WARNING—To reduce the risk of burns, electrocution, fire or injury to persons:**

- 1** Close supervision is necessary when the CLARISONIC Skin Care Brush and charger cradle are used by, on or near children or invalids.
- 2** Use the CLARISONIC Skin Care Brush only for its intended use as described in the CLARISONIC User Guide. **Do not** use attachments not recommended by the manufacturer.
- 3** The charger cradle is designed for plugging into an electrical outlet. Refer to the bottom of the charger cradle for voltage specification. Voltage converters or plug adapters do not guarantee voltage compatibility. Never force the plug into an outlet.
- 4 Never** operate the CLARISONIC charger cradle if it has a damaged cord or plug, if it is not working properly, if it has been dropped or damaged, or dropped into water. Call CLARISONIC at 1-888-525-2747 so we can arrange for examination and replacement if needed.
- 5** Keep the cord away from heated surfaces.
- 6 Never** use while sleeping or drowsy.
- 7 Never** drop or insert any object into any opening of the charger cradle or handle.
- 8 Do not** use where oxygen is being administered. CLARISONIC is believed to be safe for use with many common pacemakers. If you have any questions about usage with a pacemaker, consult your physician or pacemaker manufacturer prior to use.
- 9** The supply cord cannot be replaced. If the cord is damaged the CLARISONIC charger cradle should be replaced.
- 10** Call CLARISONIC at 1-888-525-2747 to arrange for replacement if needed.

## using your clarisonic

Prior to the first use, we recommend that you charge the CLARISONIC brush handle overnight. For best results, charge your CLARISONIC for 24 hours before using it for the first time by plugging the charger cradle into an electrical outlet and placing the CLARISONIC in the charger cradle. Once your CLARISONIC is fully charged, it's time to begin your CLARISONIC experience. For your convenience, your CLARISONIC handle is waterproof and may be used in the shower or bathtub. Refer to *Important Safeguards* regarding the charger cradle.

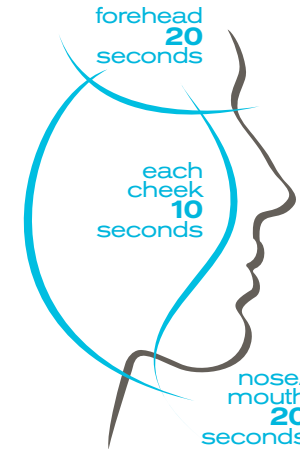
The CLARISONIC is packaged with the Sensitive brush head (white plastic base) installed. The Normal brush head (gray plastic base) is also included. Please select the appropriate brush head to match your skin type and sensitivity. Remove all makeup and wet your skin with warm water prior to use. Liberally apply cleanser to your skin and wet the brush head with warm water. Then gently apply the brush to your skin, push the power button to turn your CLARISONIC on and gently move the brush using a small circular motion. Pressing too hard will slow the motion of the brush and reduce the effectiveness. CLARISONIC also effectively clarifies the neck, back, décolleté (upper chest), shoulders, arms, and the back of the hands. It is recommended that you do not share a brush head with another individual.

### Power Level

The CLARISONIC Skin Care Brush offers a choice of 2 power levels for your cleansing needs and comfort: normal and low power. The CLARISONIC provides both audible and visible indication of the power level. When the CLARISONIC is turned on at the normal power level, there are 3 ascending beeps and the yellow light is illuminated. At the low power level, 3 descending beeps are heard and the yellow light is turned off.

Power level	Audible indication	Visible indication
Normal	3 ascending beeps	yellow light on
Low	3 descending beeps	yellow light off

To toggle between the settings, hold the power button down for 3 seconds continuously when turning on the CLARISONIC. The CLARISONIC will remember the previous power setting and will indicate it audibly and visibly as power is turned on.



Cleanse your face using our T-Timer™ recommended times and zones as shown above.

### Cleansing Timer

For even and thorough cleansing of your face, the CLARISONIC features a proprietary one-minute T-timer™ that beeps and pauses momentarily to indicate it is time to move to another part of your face. We recommend that you spend the first 20 seconds of brush time on your forehead, 20 seconds on your nose/mouth region, and 10 seconds on each cheek. The CLARISONIC will shut off automatically after one minute. If you wish to pause the cleaning cycle for up to 30 seconds, simply press the power button. The yellow light will flash (indicating sleep mode) and the CLARISONIC will remember the time remaining on the T-timer. Press the power button to resume cleaning. When finished, rinse your skin with warm water and rinse the brush head of the CLARISONIC with warm water.

To change the cleansing cycle time, turn your CLARISONIC on and hold the power button for more than 10 seconds. At around 3 seconds, you will hear three tones (related to the Power Level) and then you will hear beep tones relating to the optional cleansing times and interval beeps. The cleansing time selections are indicated by three different audible sequences:

Audible indication	Cleansing cycle time	Interval beeps
1 long beep & 2 short beeps	2 minutes	at 40, 80, and 100 seconds
1 long beep only	2 minutes	none
1 long beep & 1 short beep	1 minute (this is factory selected default)	at 20, 40, and 50 seconds

Please note that you have now changed your power setting as well as the cycle time. You may now reselect your desired power level.



Gently move the brush using a small circular motion.

### Charging

A charger cradle designed to hold and charge the brush handle is included. Simply place the CLARISONIC into the charger cradle with the brush facing the raised wave of the charger. The green light will flash while the CLARISONIC is charging and will shine a constant green when it is fully charged. It cannot be over-charged. You can leave the CLARISONIC in the charger cradle, or if you prefer, you can leave it out of the charger cradle (for example, by the sink, tub or shower) as long as you charge it after every 30 one-minute brushing cycles. We recommend that you leave your CLARISONIC in its charger cradle when not in use.

As an indication that the battery is low, the CLARISONIC will alert you that it needs to return to the charger by beeping 5 times while the yellow and green lights flash 5 times. For your convenience, the CLARISONIC only needs to be charged overnight after every 30 one-minute brushing cycles and can be kept out of the charger (for example, by the sink, tub or shower) until it needs charging. If it is used for 30 or more one-minute cycles without being charged, the brush handle will beep immediately following the one-minute brushing cycle, to alert you to place it in the cradle for charging.

## caring for your clarisonic

To clean your CLARISONIC, we recommend that, once a week, you wash the brush head and the handle separately using warm soapy water to remove any buildup of debris that may have accumulated. **Do not** attempt to open the brush handle to clean the interior. To dry the bristles after use, rub the brush head against a towel for 5-10 seconds while the CLARISONIC is powered on. **Do not** use abrasive cleaners or chemicals to clean any part of the CLARISONIC. **Do not** put any part of the CLARISONIC in a dishwasher.

To clean the charger cradle, wipe with a soft, damp cloth. **Do not** immerse the charger cradle in water.

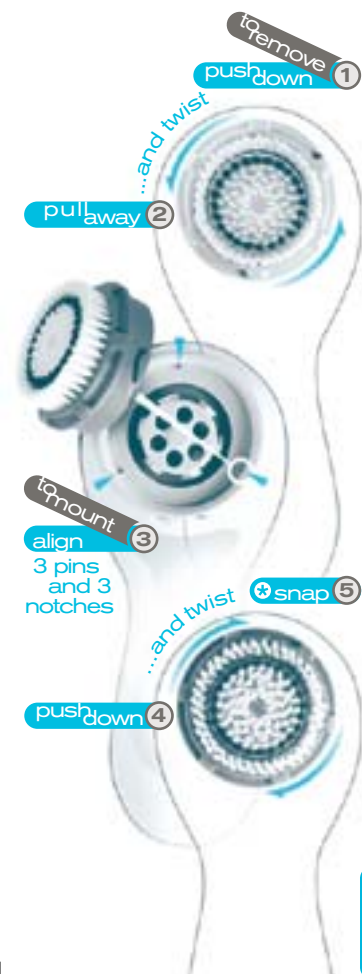
### Replacement Brush Heads

We recommend that the CLARISONIC brush heads be replaced every 90 days as the bristles become fatigued and less effective over time. They can be purchased from your physician or medi-spa or at [www.clarisonic.com](http://www.clarisonic.com).

**To remove** the brush head, ① simply grip the brush head firmly, then push and twist it counter-clockwise. Then ② pull the head away from the handle.

**To mount** the brush head, ③ align the 3 notches with the 3 pins, then ④ push down and twist the head clockwise until it ⑤ snaps into place.

There are 2 types of brush heads offered to enhance the comfort of your CLARISONIC experience. The brush heads are offered in either Normal (gray plastic base) or Sensitive (white plastic base) to match your skin type and sensitivity. Both are included in the system kit and are compatible with the CLARISONIC brush handle. The brush heads can be purchased separately for replacement use.



### CLARISONIC Daily Cleanser

The CLARISONIC can be used with most facial cleansers, but works best with the CLARISONIC Daily Cleanser. Included with your CLARISONIC is a sample of this cleanser. It is a lightly scented, non-foaming cleanser designed for sensitive and normal skin. The botanical ingredients include green tea, seaweed, and cucumber extract. CLARISONIC Daily Cleanser is available for purchase at your physician or medi-spa or at [www.clarisonic.com](http://www.clarisonic.com).

6 oz. size available for purchase.  
2 oz. size sample package.



10

## troubleshooting

### My CLARISONIC won't turn on.

In order for the CLARISONIC to turn on, the battery needs to be sufficiently charged. The warning beeps and lights indicate that the device needs to be placed in the charger overnight. Check to be sure that your charger cradle is not plugged into an outlet that is linked to a wall switch. If the problem persists, contact the customer care department at 1-888-5-CLARISONIC or 1-888-525-2747.

### The bristles feel too harsh on my skin.

Always use the CLARISONIC on wet skin. The CLARISONIC offers a choice of 2 power levels for your cleansing needs and comfort. Try the lower power level by holding the power button for 3 seconds when turning it on. At the lower power level, 3 descending beeps are heard and the yellow light is turned off. Also, try using the sensitive brush head, as it is softer on the skin and is designed for maximum comfort. You can also improve your comfort by increasing the amount of CLARISONIC Daily Cleanser or other cleanser that you use.

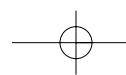
### My brush head appears stained.

With daily maintenance and washing, the brush head should not stain. Using CLARISONIC to remove makeup will cause discoloration, which will not adversely affect performance. **Never** use CLARISONIC to remove eye makeup.

### The inner brush head is not moving, but sound is coming from the handle.

Remove the brush head and twist it back into place, assuring that the brush head is properly seated using its 3 attachment pins. This should reactivate the motion of the inner bristles. If the problem persists, contact the customer care department at 1-888-5-CLARISONIC or 1-888-525-2747.

11



## warranty

### **The brush is noisy.**

Remove the brush head and twist it firmly back into place, assuring that the brush head is properly seated using its 3 attachment pins. If the problem persists, contact the customer care department at 1-888-5-CLARISONIC or 1-888-525-2747.

### **The brush beeps during use.**

The beeps are your guide to a more even and thorough cleansing of the face. For more on this, please see page 7 of this booklet.

### **The brush head won't come off.**

Grip the brush head firmly, push and twist it counter-clockwise. Then pull the head away from the handle.

If you have any questions or comments, please contact us at [www.clarisonic.com](http://www.clarisonic.com), or at

1-888-5-CLARISONIC (1-888-525-2747)

We are happy to offer a 30 day money-back guarantee. If you are for any reason dissatisfied with the purchase of your CLARISONIC, call the customer service department at 1-888-5-CLARISONIC or 1-888-525-2747 to make arrangements for the return.

In addition, every CLARISONIC comes with a one year warranty covering any problems resulting from every day use. Call the customer service department at 1-888-5-CLARISONIC or 1-888-525-2747 if you feel your CLARISONIC is not operating properly.

CLARISONIC is a trademark of Pacific Bioscience Laboratories, Inc.

**Pacific Bioscience  
Laboratories, Inc.**

13222 SE 30th Street #A1  
Bellevue WA 98005

Toll Free:  
1-888-5-CLARISONIC or  
1-888-525-2747

Local:  
425-283-5700

[www.clarisonic.com](http://www.clarisonic.com)

PBL3501A

