

READ THIS FIRST



START HERE

Here's what you'll do:

- Charge and set up your Palm™ Tungsten™ T3 handheld.
- Install Palm™ Desktop software.
- Learn to use your handheld.

Contents

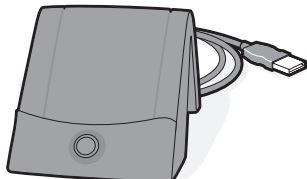


Note!

You must install the version of Palm Desktop software included in this package in order to synchronize and to support all the features of your handheld.



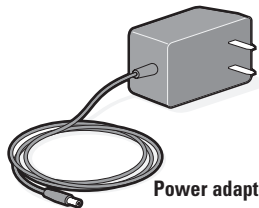
Palm Tungsten T3 handheld



USB HotSync® cradle



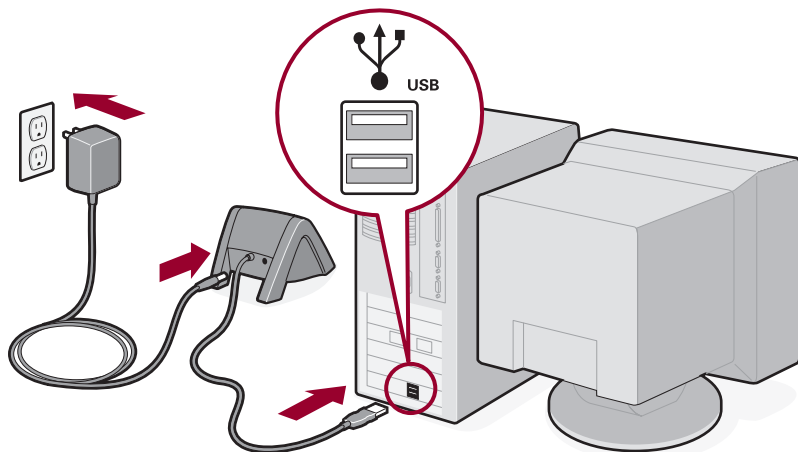
Software Installation CD



Power adapter

1 Connect

- Connect the HotSync® cradle to the computer.*
- Plug the adapter into an outlet and into the cradle.



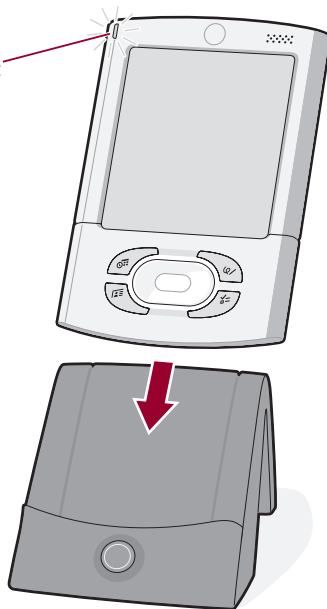
* Systems without USB ports require a serial cradle (sold separately).



2 Charge

- a. Place your Tungsten T3 handheld in the cradle.
- b. Make sure that the indicator light is solid green. This means your handheld is properly seated in the cradle and is being charged.*
- c. Charge for at least **two full hours**.

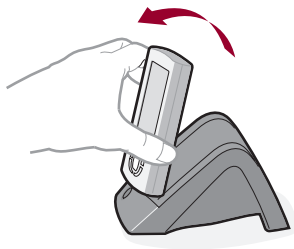
Indicator light



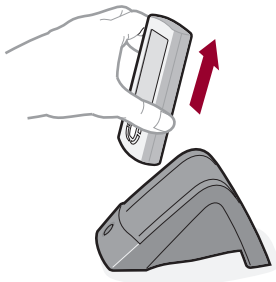
* Problems? See "Troubleshooting" in the upcoming pages.

3 Set up

a. Remove the handheld from the cradle.

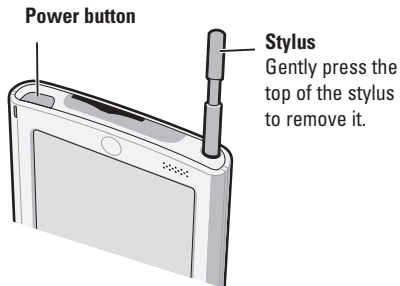


1. Tilt it forward.



2. Lift up.

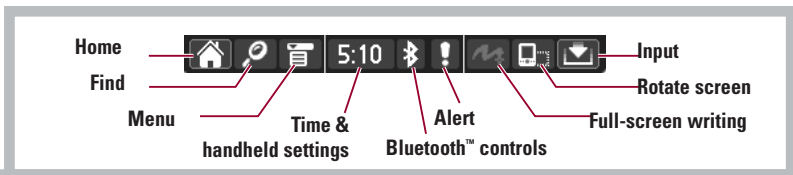
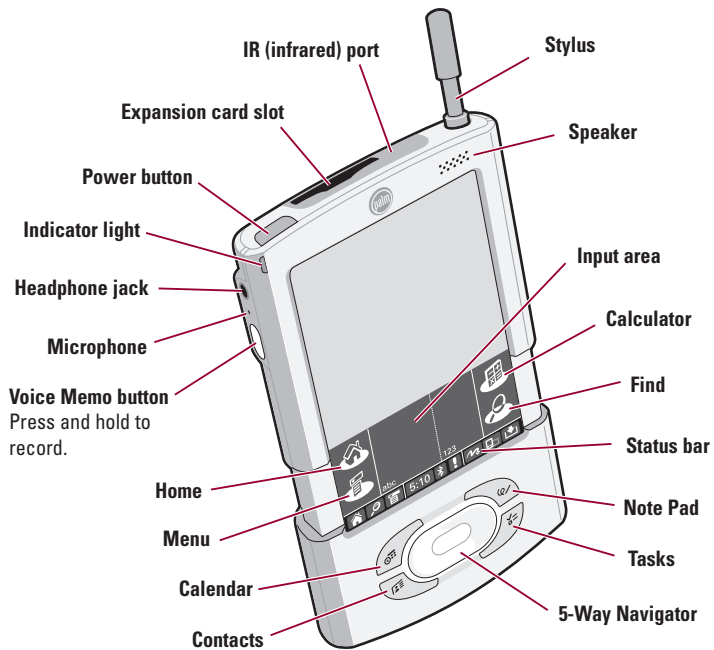
b. Turn on the handheld by pressing the power button.*



c. Remove the stylus.

d. Follow the instructions onscreen.

* *Problems? See "Troubleshooting" in the upcoming pages.*

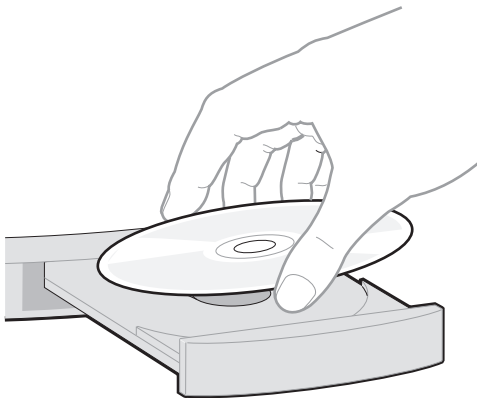


INSTALL SOFTWARE

4 Install Palm™ Desktop software on your computer

Windows:

Follow the installation instructions that appear on your computer screen.*



* *Problems? If installation or the HotSync process did not work, see “Troubleshooting” in the upcoming pages.*

Tip for upgraders: To switch from Palm Desktop to Microsoft Outlook synchronization, select “Install Microsoft Outlook Conduits” at the end of the installation process. For more information on the upgrade process, go to www.palm.com/support/intl.

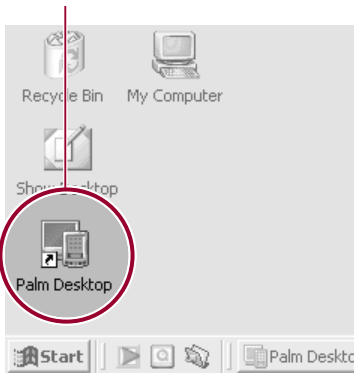
ENTER AND SYNCHRONIZE YOUR INFORMATION

5 Try it! Schedule an appointment on your computer

If you synchronize with Microsoft Outlook, then schedule an appointment in Outlook, not Palm Desktop software.

Windows:


- a. Double-click the Palm Desktop icon on your computer desktop.

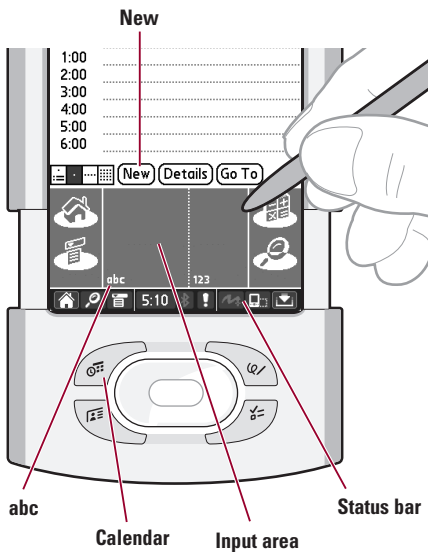


- b. In Palm™ Desktop software, click New Event in the lower-left corner.
- c. Enter the appointment, and then click OK to save it.

6 Now schedule an appointment on your handheld


- Press the Calendar button twice.
- Slide open the handheld to reveal the Input area.

If you do not see the Input area, tap the Input icon  in the status bar.



- Tap New.

The screenshot shows a 'Set Time' dialog box with the following content:

Set Time 		
Start Time:	8	↑ +00
	12:00 pm	05
	10	10
End Time:	11	15
	1:00 pm	20
	1	25
	2	+30
	3	35
	4	40
	5	45
	6	50
	7	55
		↓

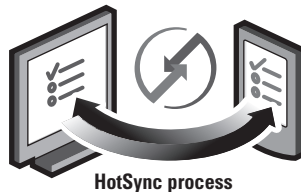
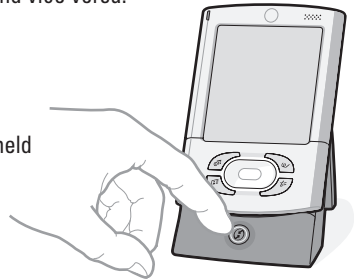
Buttons: All Day, No Time, OK, Cancel

- Tap to set the time, and then tap OK.
- Tap "abc" to display the onscreen keyboard. Tap the keyboard to type.

7 Synchronize information on your handheld and computer

The HotSync® process synchronizes information on your handheld and in the desktop application you chose in step 4 (Palm™ Desktop software or Outlook). After synchronizing, information you enter in your handheld appears in the desktop application, and vice versa.*

- a. Place the handheld in the cradle.
- b. Press the button on the cradle to begin the HotSync process.*
- c. When the HotSync process is complete, check your handheld and desktop application to see both appointments in both places.



HotSync process

* *Problems? If the HotSync process did not work, or (Windows only) you cannot find your photos and Voice memos after synchronization, see "Troubleshooting" in the upcoming pages.*

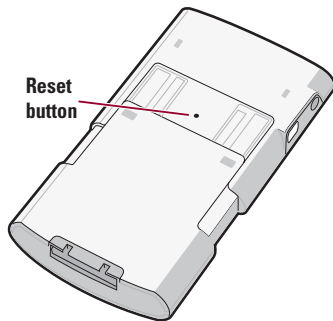
TROUBLESHOOTING

▶ The indicator light does not go on

1. Seat your handheld firmly in the cradle.
2. Connect the power adapter securely to the cradle.
3. Make sure that the power adapter is plugged into a working electric outlet.

▶ Your handheld does not turn on when you press the power button, or your handheld does not respond when you tap it

1. Press any application button to see if you can turn on your handheld that way.
2. Perform a soft reset:
 - a. Slide open your handheld.
 - b. Use the tip of your stylus or an unfolded paper clip (or similar object without a sharp tip) to gently press the reset button inside the hole on the back panel of your handheld.
3. Charge your handheld for another full two hours.
 - a. Place your handheld in the cradle.
 - b. Make sure the indicator light is on.



For more information, go to www.palm.com/support/intl.

► **Palm™ Desktop Installer does not automatically appear after you put the CD-ROM into the drive**

Windows:

1. Click the Start button.
2. Select Run from the Start menu.
3. Click Browse to locate the drive with the Palm Desktop software CD-ROM.
4. Double-click the **autorun.exe** file on the Palm Desktop software CD-ROM.

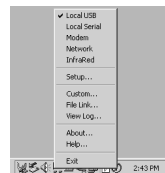
► HotSync® process does not begin

Check that the handheld is properly seated in the cradle and that the cradle connector is securely connected to the computer.

Windows:

1. Make sure that the HotSync® Manager icon appears in the Windows system tray. If not:
 - a. Click the Start button and select Programs.
 - b. Select Palm Desktop, and then select HotSync Manager.
2. Check the connection type:
 - a. Click the HotSync Manager icon.
 - b. Make sure that a checkmark appears next to Local USB (or Local Serial if you're using a serial connection). To insert a checkmark, click the menu item.

HotSync Manager icon



► Symptoms caused by third-party applications

Some third-party applications may not have been upgraded to be compatible with your new Palm™ handheld. If a third-party application is NOT compatible, the following symptoms may occur on your handheld after you perform a HotSync operation:

- Device freeze
- Device freeze or reset when an application is opened
- Slow performance
- Unusual screen display
- Difficulties using handheld features
- Uneven sound quality
- Device reset

For detailed information on issues with third-party-application compatibility, check with the third-party vendor.

For more information, go to www.palm.com/support/intl.

▶ **Windows only: Cannot find photos or Voice memos on desktop after synchronization**

Photos, Voice memos, and Expense data always appear in Palm Desktop software, even when you choose to synchronize with Microsoft Outlook.

To see this data, double-click the Palm Desktop icon on your computer desktop, and then click the application icon in the launch bar.

Data in Calendar, Contacts, Tasks, and Memos synchronizes with the desktop application you chose during the installation process (Palm Desktop software or Microsoft Outlook).

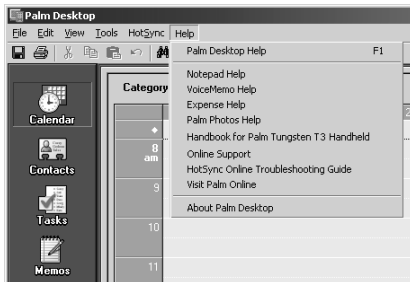
FIND MORE INFORMATION

Read the *Handbook*

The *Handbook* opens in Adobe Acrobat Reader on your computer. If you do not have Acrobat Reader, you can install it from the Palm™ Desktop software CD-ROM.

Windows:

In Palm Desktop software, click Help in the menu bar. Then select the menu item for the *Handbook*.



www.palm.com/tungstent3

In one convenient location, find tips on getting the maximum benefit from your handheld, get your favorite accessories, download more software, and communicate with other Palm™ handheld users.

Palm, Inc.
400 N. McCarthy Blvd.
Milpitas, CA 95035
USA

Copyright

© 2003 Palm, Inc. All rights reserved. HotSync, the Palm logo, and the Palm Powered logo are registered trademarks of Palm, Inc. Palm, Tungsten, BenMai and BenMai logo are trademarks of Palm, Inc. Palm, Inc. uses the Bluetooth trademark under express license from Bluetooth SIG, Inc., U.S.A. Other product and brand names may be trademarks or registered trademarks of their respective owners. Palm, Inc. uses the MPEG Layer-3 audio decoding technology trademarks under express license from Fraunhofer IIS and Thompson.

Disclaimer and Limitation of Liability

Palm, Inc. assumes no responsibility for any damage or loss resulting from the use of this guide.

Palm, Inc. assumes no responsibility for any loss or claims by third parties which may arise through use of this software. Palm, Inc. assumes no responsibility for any damage or loss caused by deletion of data as a result of malfunction, dead battery, or repairs. Be sure to make backup copies of all important data on other media to protect against data loss.

IMPORTANT

Please read the End User Software License Agreement with this product before using the accompanying software program(s). Using any part of the software indicates that you accept the terms of the End User Software License Agreement.

Music files are for your personal use only. Palm, Inc. does not endorse the illegal usage of copyrighted material.

Software Download Available

Palm™ Desktop software is supplied on a CD-ROM disc. Check www.palm.com/asia for updates and new versions of the software.

Agency Compliance Information

Product regulatory and compliance information can be found in the Handbook file located on the product CD-ROM.

PN: 407-5993A-IE



Product Regulatory Information

FCC Statement

This device complies with part 15 of the FCC rules. Operation is subject to the following two conditions: (1) This device may not cause harmful interference, and (2) this device must accept any interference received, including interference that may cause undesired operation.

NOTE This equipment has been tested and found to comply with the limits for a Class B digital device, pursuant to Part 15 of the FCC rules. These limits are designed to provide reasonable protection against harmful interference in a residential installation. This equipment generates, uses, and can radiate radio frequency energy and, if not installed and used in accordance with the instructions, may cause harmful interference to radio communications. However, there is no guarantee that interference will not occur in a particular installation. If this equipment does cause harmful interference to radio or television reception, which can be determined by turning the equipment off and on, the user is encouraged to try to correct the interference by one or more of the following measures:

- Reorient or relocate the receiving antenna.
- Increase the separation between the equipment and receiver.
- Connect the equipment into an outlet on a circuit different from that to which the receiver is connected.
- Consult the dealer or an experienced radio/TV technician for help.

The use of shielded I/O cables is required when connecting this equipment to any and all optional peripheral or host devices. Failure to do so may violate FCC rules.

CAUTION Changes or modifications not covered in this manual must be approved in writing by the manufacturer's Regulatory Engineering Department. Changes or modifications made without written approval may void the user's authority to operate this equipment.

Responsible Party:

Palm Solutions Group
400 N. McCarthy Boulevard
Milpitas, California 95035
United States of America
(408) 503-7500

Palm™ Tungsten™ T3 Product Family

FC Tested to Comply
With FCC Standards

FOR HOME OR OFFICE USE

Product Regulatory Information

Canadian IC Notice 81

To prevent radio interference to the licensed service, this device is intended to be operated indoors and away from windows to provide maximum shielding. Equipment that is installed outdoors is subject to licensing.

Canadian ICES-003 Statement

This Class B digital apparatus meets all requirements of the Canadian Interference-Causing Equipment Regulations.
Cet appareil numérique de la classe B respecte toutes les exigences du Règlement sur le matériel brouilleur du Canada.

FAA Statement

Whenever you use the wireless features of your handheld, please observe the guidelines or prohibitions on the use of wireless devices in your current location. For example, when you are on an airplane, do not use the Bluetooth™ communication features of your handheld at times when government or airline regulations prohibit the use of cellular phones. You can, of course, use all other applications on your handheld in accordance with airline regulations for electronic devices.

Electrical Transmission Statement

This product has been certified as conforming to technological standards for a wireless device as a small electrical data transmission under electrical transmission law. Therefore, you do not need a license from a government agency to operate this product.
This product has been certified as conforming to technological standards. Therefore, the following actions are punishable by law:
Disassembly or modification of this product.
Removal of identification labels on the back of this product.

ARIB STD-T66 Statement (Japan)

This product uses a radio wave in the 2.4 GHz bandwidth. This frequency is also used by the microwave ovens industry, scientific and medical devices, in addition to wireless transmitters for motion detectors, such as those requiring licenses used on manufacturing lines or similar radio transmitters. It is also used in specified amateur radio stations or small radio stations not requiring licenses (all these wireless devices will be called "other wireless transmitters" below).

1. Before using this product, confirm that other wireless transmitters are not in use nearby.
2. In the unlikely event that there is electronic interference between this product and other wireless transmitters, quickly change the operating frequency of this product, change the location of operation, or stop operating the product (cease transmission of a signal).
3. If other electrical interference or related problems should occur, contact the responsible party.

376

Product Regulatory Information

Europe R&TTE Directive (Europe)

Declaration of Conformity

Application of Council Directive(s):

- 89/336/EEC EMC Directive
- 99/5/EC RITE Directive
- 72/23/EEC Low Voltage Directive

Standards to which Conformity is Declared:

- ETSI301 489-1 (Immunity)
- EN60950 1992/ A1:1993/ A2:1993/ A3:1995/ A4:1997 / A5:1998 (Safety)
- EN55022:1994/ A1:1995/ A2:1997 / A3:1998 Class B (Emissions)

The product is CE marked.

The product fulfills the essential requirements of the harmonized standards shown above. Manufacturers Name: Palm Solutions Group

Manufacturers Location: 400 North McCarthy Blvd., Milpitas, CA 95035-5112, USA Importers Name: Palm Germany GmbH

Importers Location: Landsberger Strasse 155, 0-80687 Munchen, Germany

Type of Equipment: Handheld Computer

Model Number: Palm Tungsten T3

Year of Manufacture: 2003

I, the undersigned hereby declare that the equipment specified above conforms to the above Directive(s) and Standard(s)

Place: Milpitas, CA

Date: April 29, 2003

Name: David Woo

Title: Global Compliance Manager

377

Product Regulatory Information

Taiwan Statement

Article 14: Unless approved, for any model accredited low power radio frequency electric machinery, any company, trader, or user shall not change the frequency, increase the power, or change the features and functions of the original design.

Article 17: Any use of lower power radio frequency electric machinery shall not affect the aviation safety and interfere with legal communications. In even that any interference is found, the use of such electric machinery shall be stopped immediately, and reusing of such products cannot be resumed until no interference occurs after improvement.

The legal colnmunications mentioned in the above item refer to radio communications operated in accordance with telecommunication laws and regulations.

Low power radio frequency electric machinery shall resist against interference from legal communications or from industrial, scientific, and medical radio electric machinery.

Battery Warning

Do not mutilate, puncture, or dispose of batteries in fire. The batteries can burst or explode, releasing hazardous chemicals. Discard used batteries according to the manufacturer's instructions and in accordance with your local regulations.

Varning

Eksplotionsfara vid felaktigt batteribyte. Anvand samma batterityp eller en ekvivalent typ som rekommenderas av apparattillverkaren. Kassera anvant batteri enligt fabrikantens instruktion.

Advarsel!

Lithiumbatteri-Eksplotionsfare ved fejlagtig handling. Udskiftning ma kun ske med batteri af samme fabrikat og type. Lever det brugte batteri tilbage tilleverand0ren.

Varoitus

Paristo voi riiijihitiii, jos se on virheellisesti asennettu. Vaihda paristo ainoastaan valrnistajan suositlemaan tyyppiin. Hiivitii kiyyetty paristo valrnistajan ohjeiden mukaisesti.

Advarsel

Eksplonsjonsfare ved feilaktig skifte av batteri. Benytt samme batteritype eller en tilsvarende type anbefait av apparatfabrikanten. Brukte batterier kasseres i henhold til fabrikantens instruksjoner.

Waarschuwing!

Bij dit produkt zijn batterijen geleverd. Wanneer deze leeg zijn, moet u ze **met** weggooien maar inleveren als KCA.

Uwaga

Nie kroic lub j.'rz~kluwac baterii, ani ni~ wrzucac ich do ognia.Mog'i sjl: rozerwac J.ub wybuchn1\c wydzielajolc truj1\ce \$rodki ch,'miczne. Zuzytych baterii nalezy pozbywac sie w spos6b opisany przez I-'rociuenta i zgod nie z miejscowymi j.'r£episami.

illiltN

.ilJl:JJ N? ill1~:l il'??l~il nN O'9'?n7J ON nl~~19nil nJ:J~ I!T' .11~'il n~?7Jil? ONnil:l ,il7Jl-rlN ililt il'?l~:l il"l~il nN ~"nil' I!T' 11~'il nIN1il' ONnil:l nlltJ7JlltJ7J nl'?l~ 1"ltJil? I!T'