

**TUNGSTEN™** | *E2*

**FPO**

**Read  
This First**

**palmOne™**

# Start Here

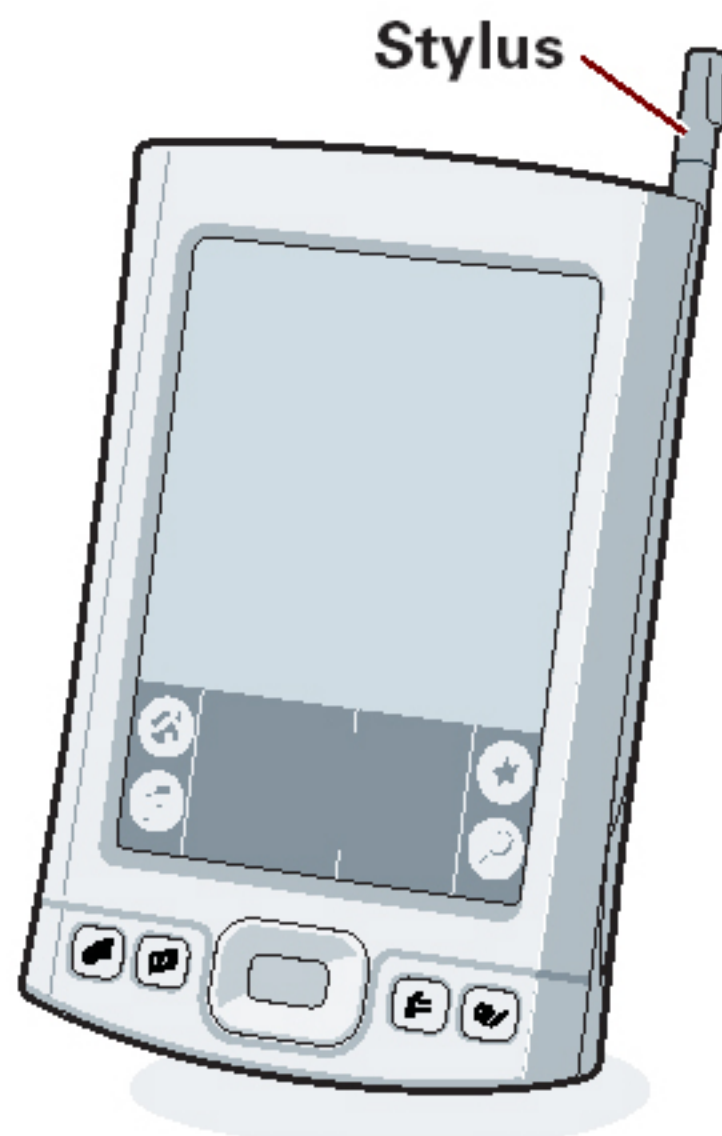
## Here's what you'll do with this guide:

- Charge and set up your handheld.
- Install Palm® Desktop software and other software.
- Synchronize your handheld with your computer.

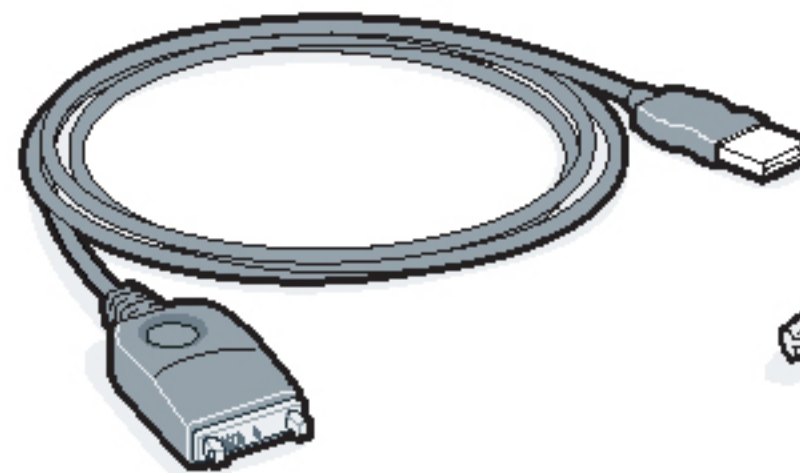
## Important! Already use a palmOne™ handheld?

Before going on to step 1, synchronize your current handheld with your computer so that the information is up-to-date.

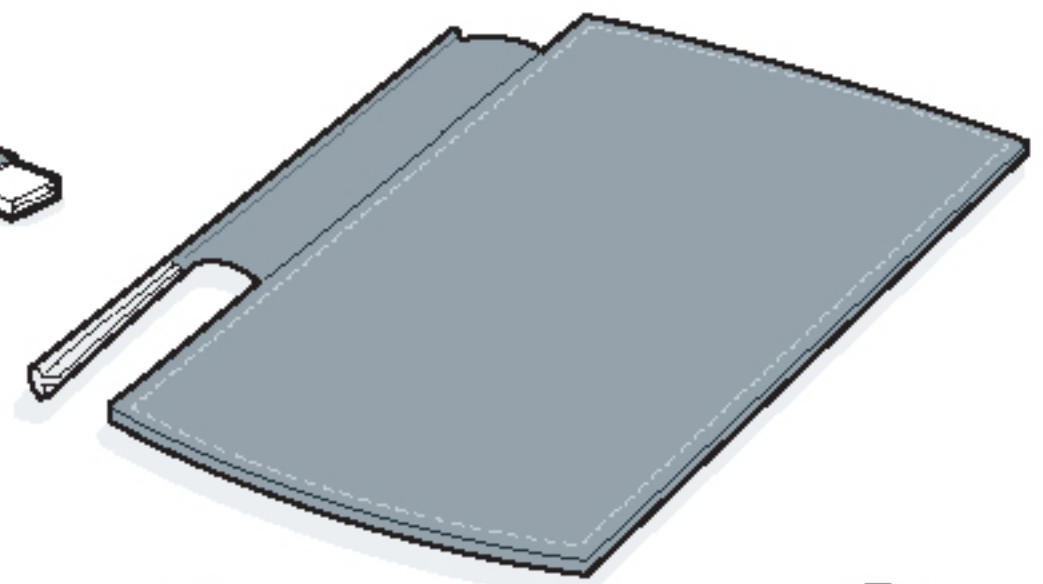
For more information on upgrading, go to [www.palmOne.com/support](http://www.palmOne.com/support).



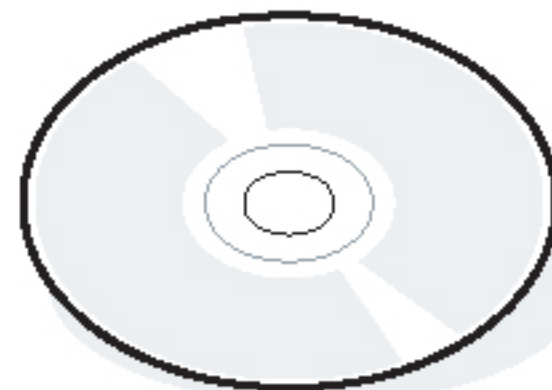
Tungsten™ E2 handheld  
by palmOne



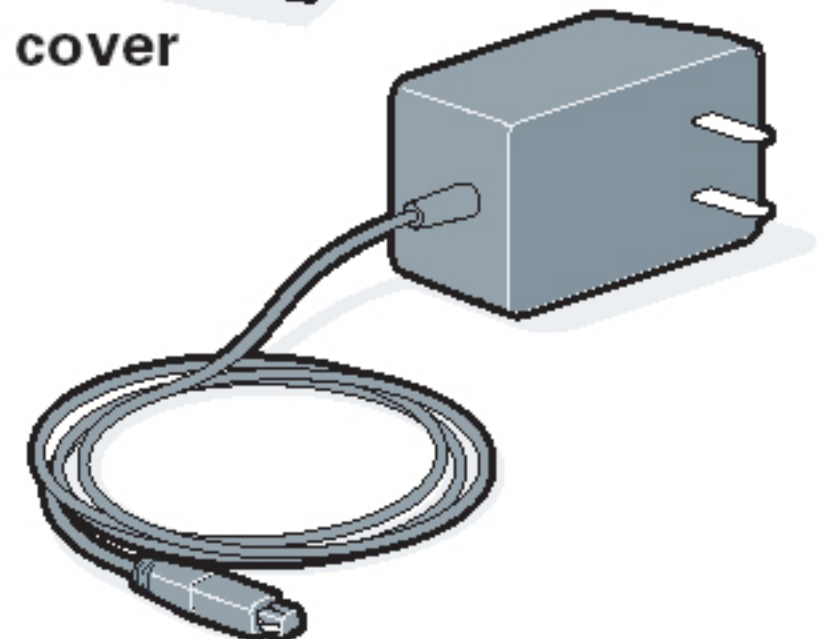
USB sync cable



Flip cover



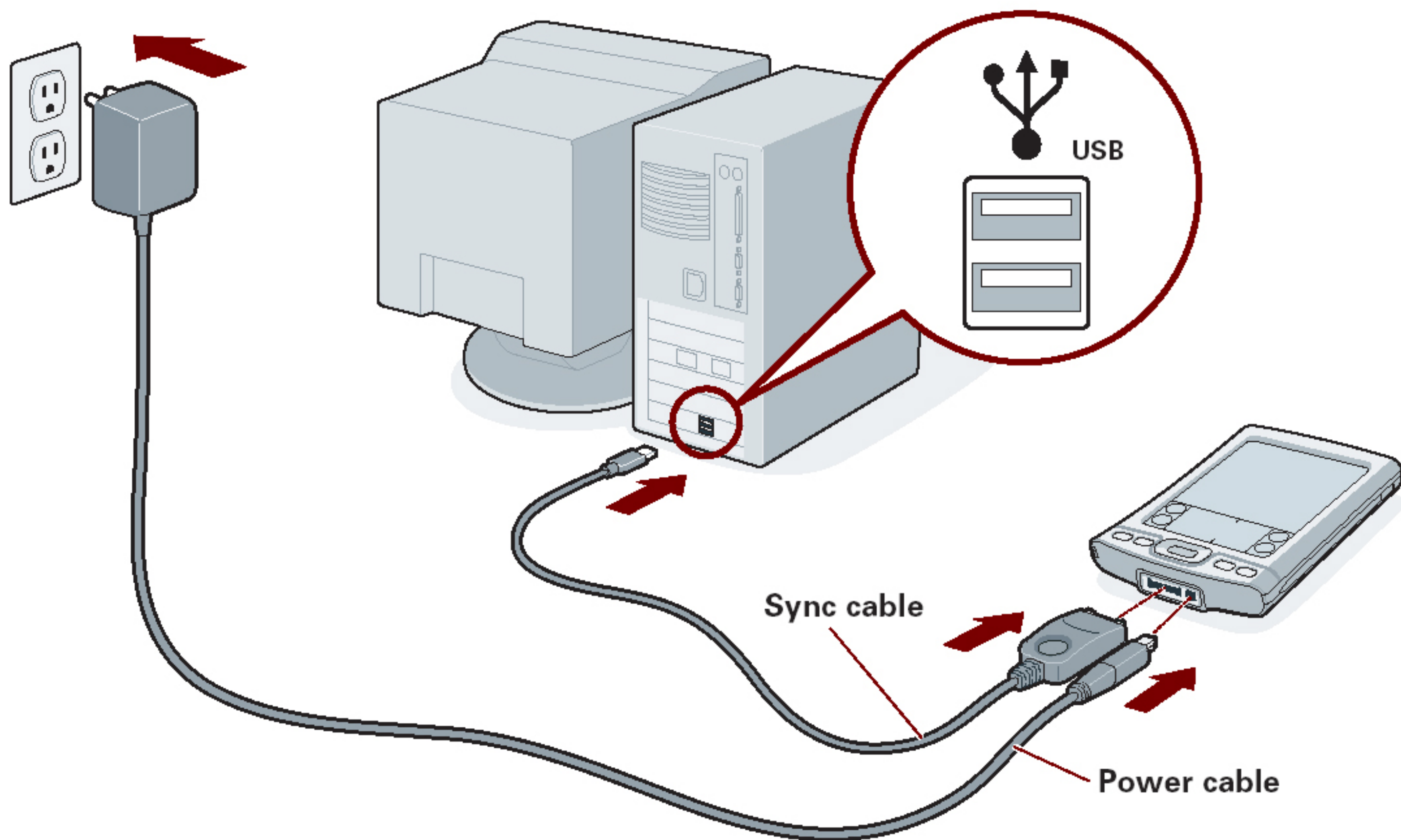
Software installation CD



AC charger

# 1 Connect and charge

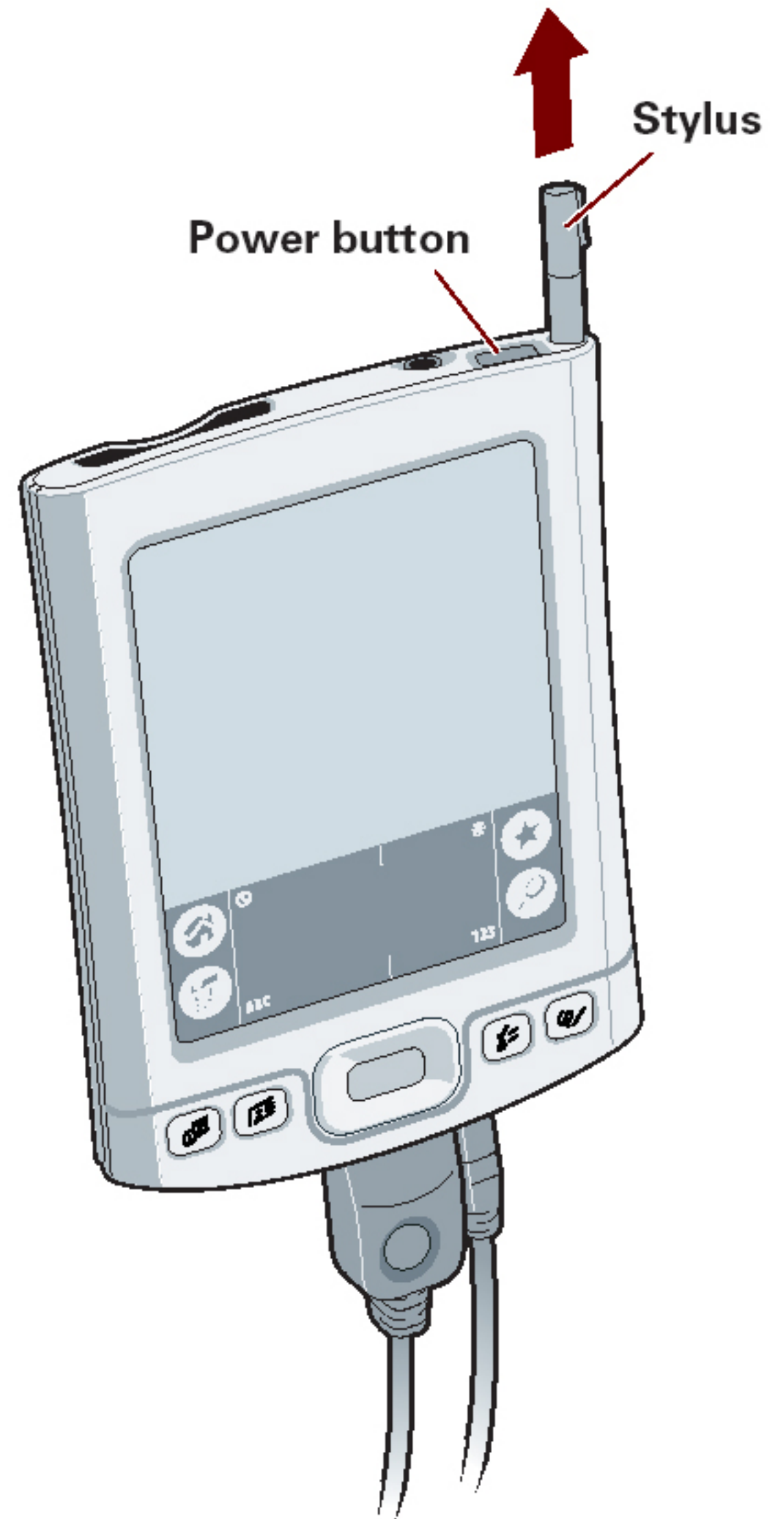
- Connect the sync cable to your handheld and to the USB port **on the back** of your computer.
- Plug the AC charger into an outlet and connect it to the handheld.
- Charge for **three hours**. Be sure to fully charge your handheld before going on to the next step.



# 2 Set up

- a. Press the power button.
- b. Remove the stylus.
- c. Follow the onscreen instructions to set up your handheld.

*Tip: Take the Quick Tour  to learn more about the great features of your Tungsten E2 handheld.*



*Problems? See Troubleshooting below.*

# 3 Install software

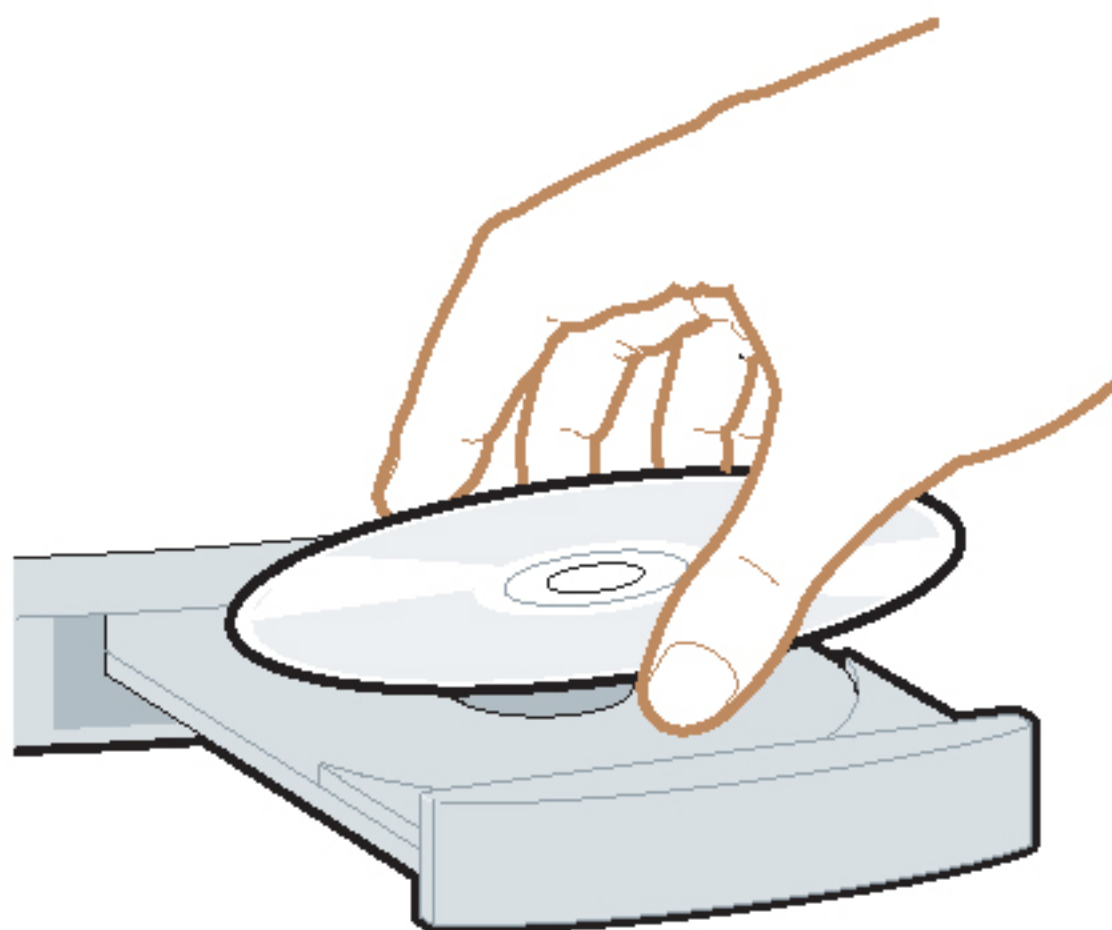
To install Palm Desktop software and other important software, insert the CD into your computer's CD drive.

## Windows:

Follow the installation instructions that appear on your computer screen.

## Mac:

- Double-click the CD icon,
- and then double-click
- palmOneDesktop.pkg.



### Already use a palmOne handheld?

Want to synchronize with Microsoft Outlook? Select "Change your synchronization method" at the end of the installation process on the CD.

*Problems? See Troubleshooting below.*



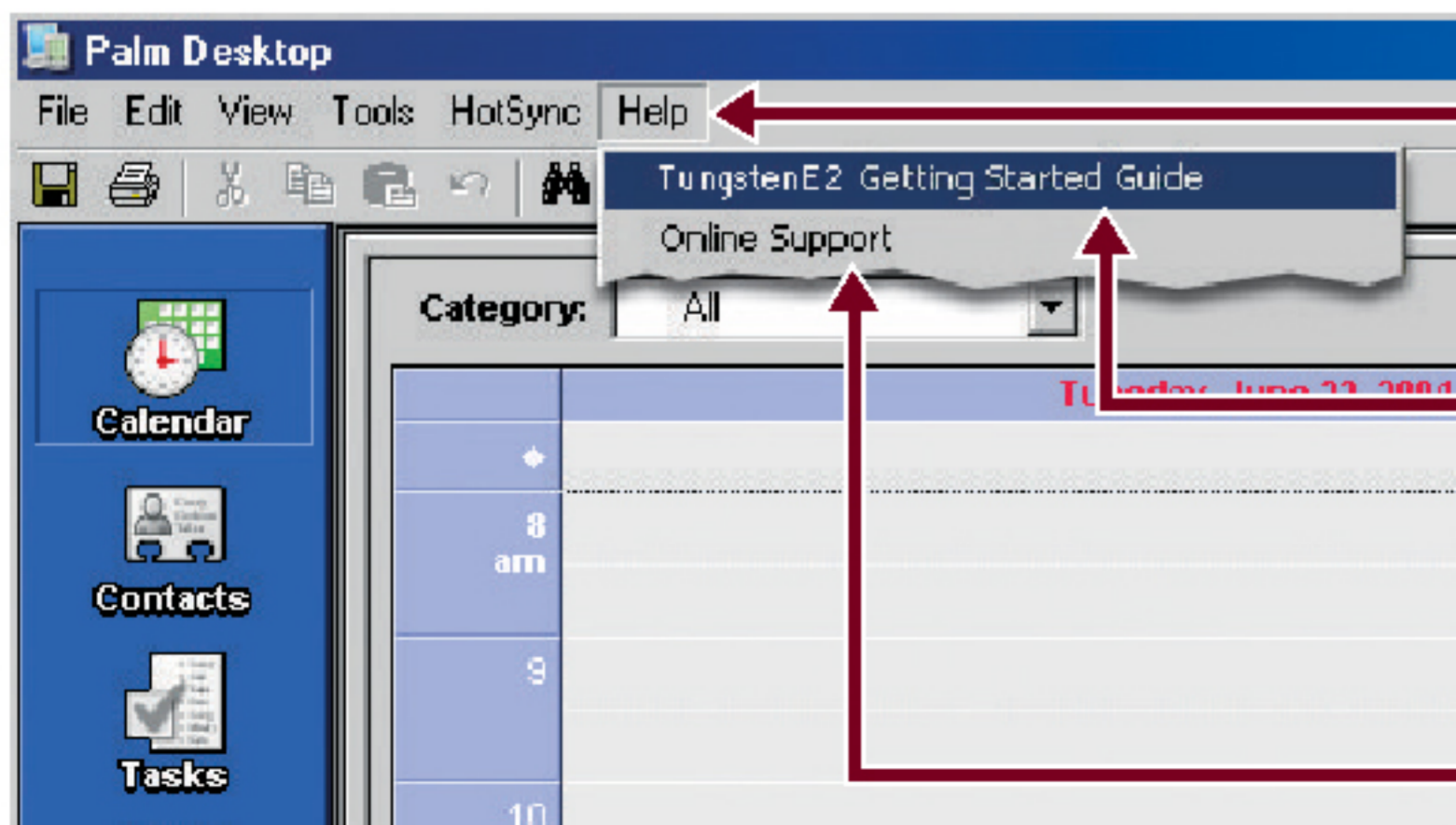
# Get answers, learn more

## Take the tutorial



Learn to use the popular features of your handheld. Insert the installation CD in your computer and click here for an **interactive tutorial**.

## Find your manual



Open Palm Desktop software on your computer and click **Help**.

Click here for the **manual**.  
For more details, go online:  
[www.palmOne.com/mytungstene2](http://www.palmOne.com/mytungstene2)

Click **Online Support** for the latest software updates and answers to frequently asked questions.