

Look for these great features

On your computer



Palm Desktop software. Enter info in Palm Desktop software and it shows up on your handheld the next time you synchronize.



palmOne Quick Install (Windows only). Install multiple applications, photos, videos, and more on your handheld the next time you synchronize.

On your handheld



Documents. Install this from the CD. Synchronize Microsoft Word, Excel, and PowerPoint files between your handheld and your computer. Create, view, and edit these files on your handheld.



Music. Play your favorite songs stored on your expansion card (sold separately).



Media. View and organize photos and videos.



Bluetooth® wireless technology. Set up wireless communication to sync with your desktop computer. Browse the web and send email and short messages (requires phone with Bluetooth wireless capability, data service, and ISP, sold separately).

Troubleshooting

▶ **Support information is also available at www.palmOne.com/support**

▶ **If your handheld does not turn on, or does not respond when you tap it**

1. Try turning it on by pressing one of the quick buttons on the front panel.
2. Do a soft reset. Use the stylus to gently press the reset button inside the hole on the back of the handheld.
3. Make sure the AC charger is fully connected to the handheld and to a *working* outlet. Charge for another three full hours.

▶ **If Palm Desktop Installer does not start when you put the CD into the drive**

Windows:

1. Click the Start button and select Run.
2. Click Browse to locate the drive that contains the CD that came with your Tungsten E2 handheld.
3. Double-click autorun.exe on the CD.

Mac:

1. Double-click the CD icon on the Mac desktop.
2. Double-click palmOneDesktop.pkg.

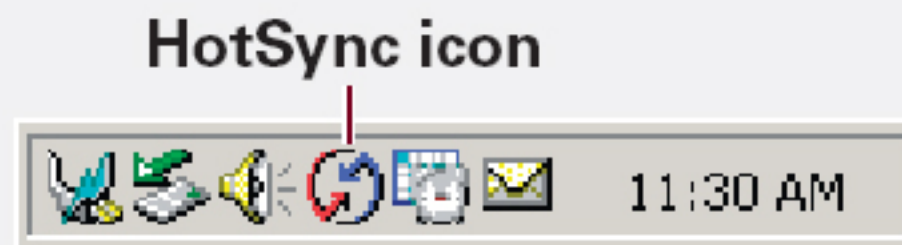
► If synchronization does not begin

Be sure the sync cable is plugged into your handheld and a USB port **on the back** of your computer.

Check your computer:

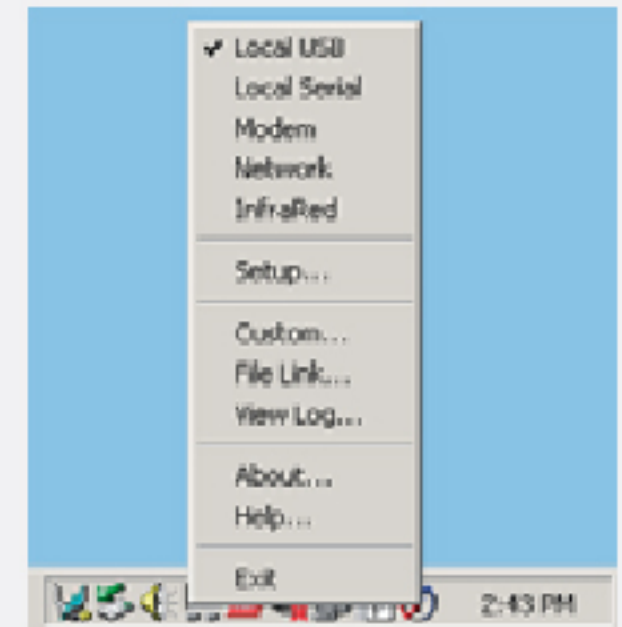
Windows:

1. Make sure the HotSync[®] icon appears in the group of icons in the lower-right part of your screen.



If not:

- a. Click the Start button and select Programs.
 - b. Select palmOne, and then select HotSync Manager.
2. Check the connection type:
 - a. Disconnect and then reconnect the sync cable.
 - b. Make sure there is a checkmark next to Local USB. If not, click Local USB.





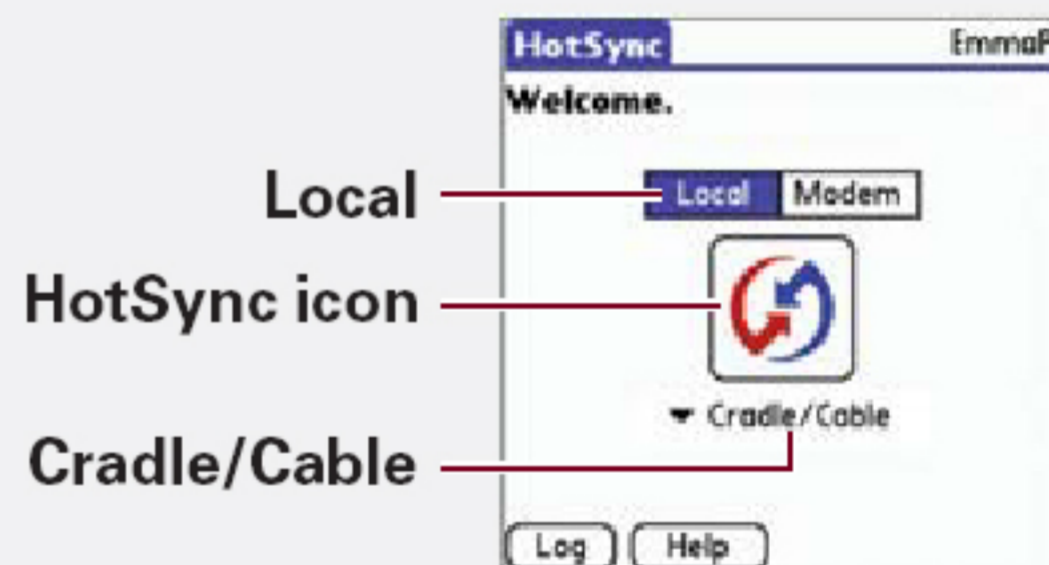
Mac:

1. Make sure the HotSync Manager is enabled:
 - a. Double-click the HotSync Manager icon in the Palm Desktop folder.
 - b. In the HotSync Controls tab, click Enabled.
2. Make sure the USB connection is working:
 - a. Disconnect and then reconnect the sync cable.
 - b. Restart your computer.

puter.

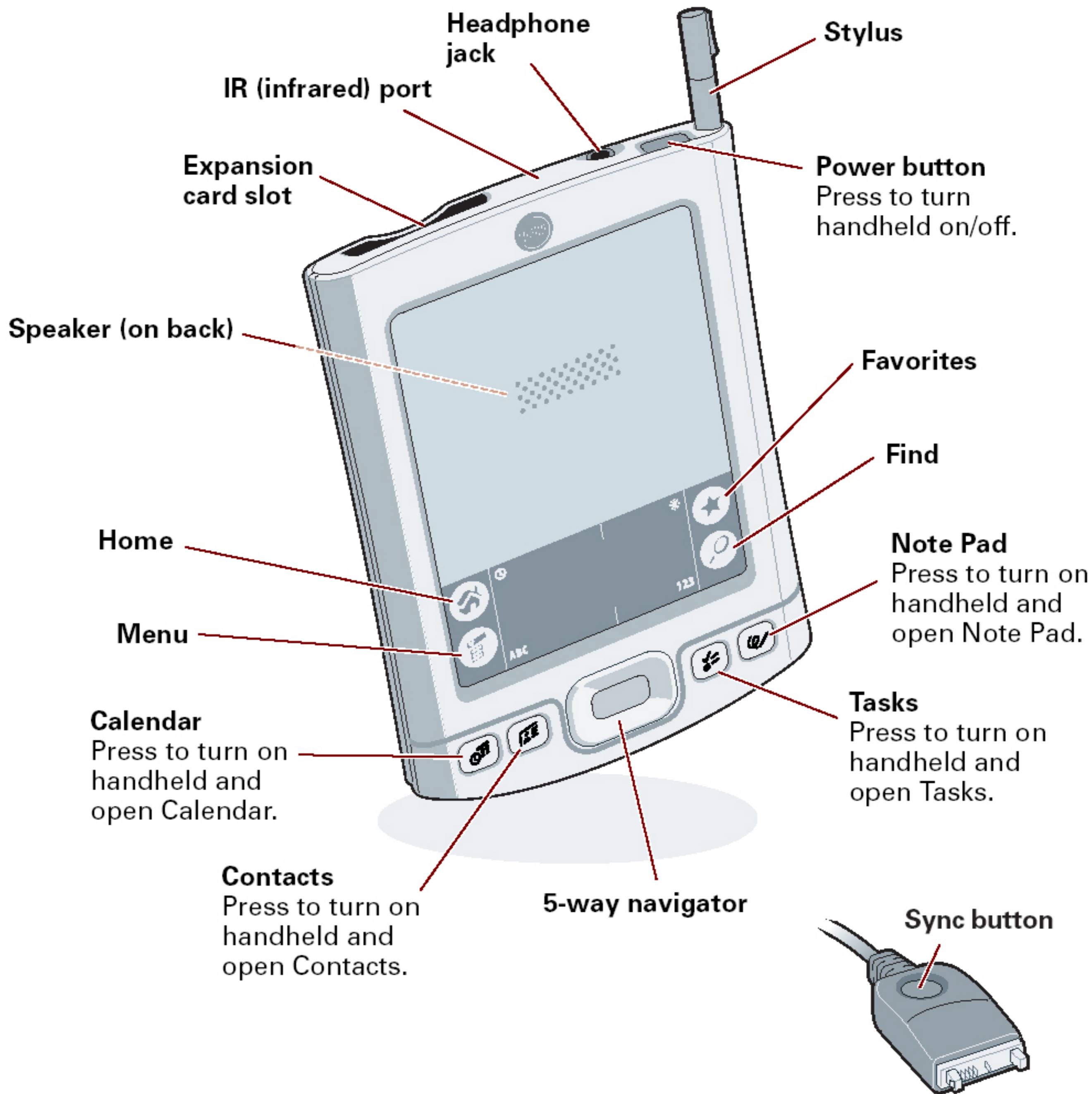
Check your handheld:

1. Tap Home , and then tap HotSync  in Applications.
2. In the HotSync application, make sure of the following:
 - Local is highlighted. If it isn't highlighted, tap Local.
 - The phrase Cable/Cradle appears. If not, tap the pick list, and then tap Cradle/Cable.
3. Tap the HotSync icon on the screen.



Already use a palmOne handheld?

Did you load any third-party applications on your previous palmOne handheld? You'll have to update them if they are not compatible with your new handheld. If any of the following symptoms occur on your new handheld after you synchronize, remove these applications and contact the vendor for updated versions: handheld freezes or resets when you open an application, slow performance, unusual screen display, difficulties using handheld features, uneven sound quality.



palmOne, Inc.
400 N. McCarthy Blvd.
Milpitas, CA 95035
U.S.A.

Copyright

© 2004 palmOne, Inc. All rights reserved.

palmOne, Tungsten, "T" (Stylized), Palm Powered, and HotSync are among the trademarks or registered trademarks owned by or licensed to palmOne, Inc. palmOne, Inc. uses the Bluetooth wireless technology trademark under express license from Bluetooth SIG, Inc. All other brand and product names are or may be trademarks of, and are used to identify products or services of, their respective owners.

Disclaimer and Limitation of Liability

palmOne, Inc. assumes no responsibility for any damage or loss resulting from the use of this guide.

palmOne, Inc. assumes no responsibility for any loss or claims by third parties which may arise through use of this software. palmOne, Inc. assumes no responsibility for any damage or loss caused by deletion of data as a result of malfunction, dead battery, or repairs. Be sure to make backup copies of all important data on other media to protect against data loss.

IMPORTANT

Please read the End User Software License Agreement with this product before using the accompanying software program(s). Using any part of the software indicates that you accept the terms of the End User Software License Agreement.

Software Download Available

Palm® Desktop software is available on CD. Check www.palmOne.com for updates and new versions of the software.

Agency Compliance Information

Product regulatory and compliance information can be found in the *User Guide* at www.palmOne.com/tungstene2-userguide



POWERED

FEDERAL COMMUNICATIONS COMMISSION

This device complies with Part 15 of the FCC Rules. Operation is subject to the following two conditions:(1) this device may not cause harmful interference, and (2) this device must accept any interference received, including interference that may cause undesired operation.

NOTE

This equipment has been tested and found to comply with the limits for a Class B digital device, pursuant to Part 15 of the FCC Rules. These limits are designed to provide reasonable protection against harmful interference in a residential installation. This equipment generates, uses and can radiated radio frequency energy and, if not installed and used in accordance with the instructions, may cause harmful interference to radio communications. However, there is no guarantee that interference will not occur in a particular installation. If this equipment does cause harmful interference to radio or television reception, which can be determined by turning the equipment off and on, the user is encouraged to try to correct the interference by one or more of the following measures:

- Reorient or relocate the receiving antenna.
- Increase the separation between the equipment and receiver.
- Connect the equipment into an outlet on a circuit different from that to which the receiver is connected.
- Consult the dealer or an experienced radio/TV technician for help.

Changes or modifications not expressly approved by the party responsible for compliance could void the user's authority to operate the equipment.

This device and its antenna(s) must not be co-located or operating in conjunction with any other antenna or transmitter.