

Support

Customer Service

SoftBank Customer Centers
From a SoftBank handset, dial toll free at 157 (General Information) 113 (Customer Assistance)

SoftBank Global Call Center
From outside Japan, dial +81-3-5351-3491 (International charges will apply.)

Emergency Numbers

- Police..... **110**
- Fire & Ambulance **119**
- Coast Guard **118**

More Information

- **Handset User Support**
Via Yahoo! Keitai Main Menu: From above search field, Select **メニューリスト** → **English** → **User Support**.
- **Online English Manual**
<http://www.softbank.jp/mb/r/support/xxx/>
May be unavailable at purchase. Call Customer Service or try later.

■ Call these numbers toll free from landlines.

Subscription Area	Service Center	Toll Free Number
Hokkaido, Aomori, Akita, Iwate, Yamagata, Miyagi, Fukushima, Niigata, Tokyo, Kanagawa, Chiba, Saitama, Ibaraki, Tochigi, Gunma, Yamanashi, Nagano, Toyama, Ishikawa, Fukui	General Information	0088-240-157
	Customer Assistance	0088-240-113
Aichi, Gifu, Mie, Shizuoka	General Information	0088-241-157
	Customer Assistance	0088-241-113
Osaka, Hyogo, Kyoto, Nara, Shiga, Wakayama	General Information	0088-242-157
	Customer Assistance	0088-242-113
Hiroshima, Okayama, Yamaguchi, Tottori, Shimane, Tokushima, Kagawa, Ehime, Kochi, Fukuoka, Saga, Nagasaki, Oita, Kumamoto, Miyazaki, Kagoshima, Okinawa	General Information	0088-250-157
	Customer Assistance	0088-250-113



Utilizing 70% post-consumer recycled paper pulp

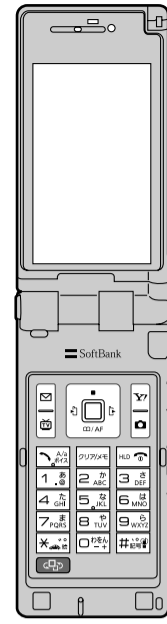


This manual is printed using an ink based on soy bean oil.

3TR100019AAA

SoftBank 920P

First Step Guide



Emergency Numbers

Customer Service

More Information

Use English Interface

Call Abroad from Japan

Customize Handset Address

and more...

Safety Precautions

- **Use specified battery, charger and holder.**
The use of devices other than those specified may result in malfunction of handset or battery. Leaking, overheating, explosion or fire may occur.
- **Do not get handset, battery and charger wet.**
If liquids such as water or pet urine get into battery and charger, they may cause overheating, electric shock or malfunction. Do not use handset in damp places like bathrooms.
- **Do not use handset while driving a vehicle.**
Doing so may interfere with safe driving and cause an accident. Stop your vehicle to park in a safe place before using handset. Drivers using handsets while driving are subject to prosecution.
- **Do not throw or otherwise subject to strong force or impacts.**
Battery may leak, overheat, explode, catch fire, or cause damage to handset.
- **Turn off handset where use is prohibited, such as aboard aircraft or in hospitals.**
Handset may interfere with the operation of sensitive devices and electronic medical equipment. Follow the instructions given by the respective medical facilities regarding the use of mobile phones on their premises. In addition, actions such as speaking on a mobile phone aboard aircraft are prohibited and may be punishable by law.
- **Do not disassemble or modify handset.**
May cause accidents such as fire, bodily injury, electric shock or equipment malfunction.
- **Keep handset off and charger disconnected in filling stations or places where flammable gas is generated.**
Handset use in such areas may lead to fire.
- **Do not use or leave handset, battery or charger in locations subject to high temperature, such as near an open flame, in sunlight or inside a car on an extremely hot day.**
Battery may leak, overheat, explode, catch fire, or deform handset and cause damage. Part of the casing may also become hot and cause burns.
For more information, see User Guide (Japanese) P.xxx.

Handling Precautions

General Notes

- **SoftBank is not liable for damages from accidental loss/alteration of handset/Memory Card information (Phone Book entries, image/sound files, etc.). Back-up important information.**
- **Handset transmissions may be disrupted inside buildings, tunnels or underground, or when moving into/out of such places.**
- **Use handset without disturbing others.**
- **If handset is left with no battery or an exhausted one, data may be altered/lost. SoftBank is not liable for any resulting damages.**
- **Handset use near landlines, TVs or radios may cause interference.**

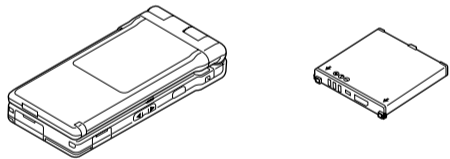
Electromagnetic Waves

- **Beware of eavesdropping.**
Digital signals reduce interception, however transmissions may be overheard. Deliberate/accidental interception of communications constitutes eavesdropping. "eavesdropping" means radio communication is received by another receiver deliberately or accidentally.
- **For body worn operation, this mobile phone has been tested and meets RF exposure guidelines when used with an accessory containing no metal and positioning the handset a minimum 15 mm from the body. Use of other accessories may not ensure compliance with RF exposure guidelines.**
For more information, see User Guide (Japanese) P.xxx.

Before Using Handset

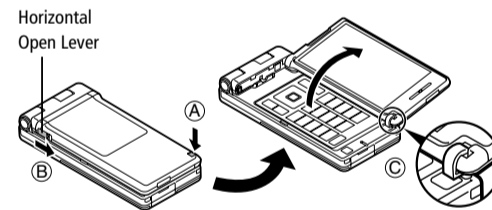
Package Contents

- Handset (920P)
- Battery (PMBAG1)
- User Guide (Japanese)
- First Step Guide
- Raku Raku Start Book (Japanese)
- Utility Software* (CD-ROM)



* Utility Software updates/upgrades may be released on SOFTBANK MOBILE Corp. Website (<http://www.softbank.jp>) without prior notification. Please check for the newest versions of utility applications and download as required.

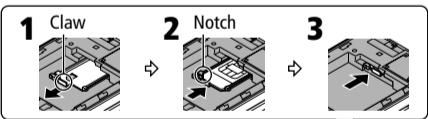
Horizontal Open Style



Open display part with Horizontal Open Lever slid in direction of B as shown. If handset is not in state of C when opening display, re-open display part after closing it once. Watch TV programs or use Full Browser in wide horizontal screen.

Be sure not to lift A when opening display part.

USIM Card Installation

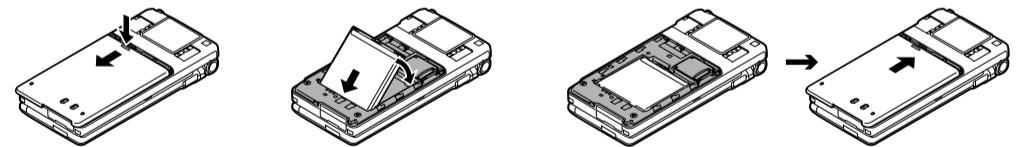


- 1 Pull out USIM Holder
- 2 Place USIM Card (gold IC facing up) on USIM Holder
- 3 Push in USIM Holder

USIM Card must be inserted to use this handset. Turn handset off and remove battery before inserting/removing USIM Card.

Battery Installation

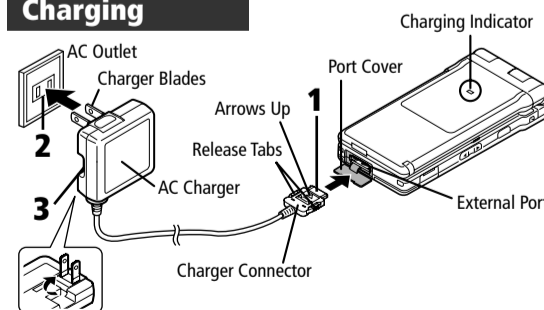
- 1 Slide battery cover, then lift to remove
- 2 Insert battery
- 3 Replace battery cover



USIM PINs

- **PIN1**
4 to 8-digit code used to prevent unauthorized 920P use.
• PIN1 can be changed.
• When PIN Entry is **ON**, PIN1 entry is required each time handset is turned on (with USIM Card inserted).
- **PIN2**
Required to clear Total Cost or set Cost Limit.
• PIN2 can be changed.
- **PIN Lock & Cancellation (PUK)**
PIN1 Lock or PIN2 Lock is activated if PIN1 or PIN2 is incorrectly entered three times. Cancel PIN1 Lock or PIN2 Lock by entering the PIN Unlocking Key (PUK/PUK2).
• If PUK is incorrectly entered ten times, USIM Card is locked and handset is disabled. Write down PUK.
• For procedures required to unlock USIM Card, contact SoftBank Customer Center, General Information.

Charging



- 1 Connect AC Charger (not included) to handset
- 2 Plug AC Charger into AC Outlet
• Charging Indicator illuminates and charging starts; may take up to approximately xxx minutes.
• When charging is complete, Charging Indicator goes out.
- 3 Unplug AC Charger, then disconnect handset

Passwords

- **Handset Code**
Required to use/change some handset functions.
• * appears for each digit entered.
• Handset Code (9999 by default) can be changed on handset.
- **Center Access Code**
4-digit number specified at initial subscription; required to access Voice Mail via landlines or subscribe to fee-based information.
- **Call Barring Password**
4-digit number specified at initial subscription, required to restrict handset services.
• If entered incorrectly three times, Call Barring settings lock; Call Barring Password & Center Access Code must be changed. Reach SoftBank Customer Center, General Information for details.

Specifications

Weight (including battery)	Approx. xxx g
Talk Time	3G: Approx. xxx minutes Video Call: Approx. xxx minutes GSM: Approx. xxx minutes
Standby Time (closed)	3G: Approx. xxx hours GSM: Approx. xxx hours
Charging Time	AC Charger: Approx. xxx minutes In-Car Charger: Approx. xxx minutes

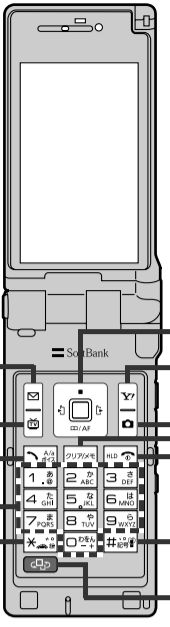
Dimensions (closed)	Approx. xxx x xxx x xxx mm
Maximum Output	3G: xxx W GSM: xxx W

• Values were calculated with battery installed.

Getting Started

Display Indicators & Key Assignments

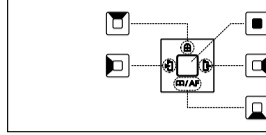
	Signal Strength
	Packet Data Transmission Available
	Unread Message
	Memory Card Inserted
	Manner Mode
	Battery Level
	Voice Message
	Alarm Set



Use Multi Selector to select items, navigate menus, etc. In this manual, Multi Selector operations are indicated as shown below.

Basic Multi Selector Operations

- Press or
- Press or
- Press or



- Open Messaging menu or execute Upper Left Softkey functions
- Initiate Video Call; activate TV; execute Lower Left Softkey functions
- Initiate/answer call; press and hold to activate Voice Dial
- Enter numbers/characters
- Access pictographs in text entry windows; press and hold to toggle Drive mode

- Open Yahoo! Keitai Main Menu or execute Upper Right Softkey functions
- Activate Camera in Standby or execute Lower Right Softkey functions
- Delete characters or highlighted items
- Turn handset power on/off; return to Standby
- Press and hold in Standby to toggle Manner mode
- Toggle Yahoo! Keitai and PC Site Browser, or activate Music Player

Function List

Messaging	Communication	Data Folder	Phone Book
Incoming Mail	S! Town	Pictures	Phone Book
Create New	S! Loop	Ring Songs&Tones	Create New Entry
Retrieve New	Camera	S! Appli	Call Log
Drafts	Camera	Music	Group
Templates	Video Camera	Videos	Account Details
Sent/Unsent Messages	Pictures	PC Movies	S! Addressbook Back-up
Server Mail	Videos	TV	Memory Manager
Create New SMS	Entertainment	Lifestyle-Appli	Restrictions
Settings	S! Quick News	Books	Settings
Memory Status	BookSurfing	Custom Screens	Memory Status
Yahoo! Keitai	e-Book Viewer	Message Templates	Settings
Yahoo! Keitai	Tools	Other Documents	Sound Settings
Bookmarks	Alarms	Music Player	Display Settings
Saved Pages	Calendar	Player	Custom Screens
Enter URL	Calculator	Data Manager	Incoming Settings
History	Notepad	TV	Phone Settings
PC Site Browser	Tasks	Watch TV	Date & Time
Yahoo! Keitai Browser	OsaiFu-Keitai	Program List	Security
Reset	Answer Phone/Recording	Timer Watching	Call Settings
S! Appli	Bar Code Reader	Timer Recording	Video Call
S! Appli Library	S! GPS Navi	Timer Recording Result	International Call
OsaiFu-Keitai	Bluetooth	TV Link	Connectivity
S! Appli Settings	Receive via Infrared	Channel List	Notification Light
S! Appli History	SD Memory Card Backup	Channel Setting	
Information	Templates/User's Dic.	User Settings	

Handset Functions

Most operation descriptions below begin in Standby.

Basic Operations

Handset Power On/Off

Power On
Open handset → Press and hold

Power Off
Open handset → Press for 2+ seconds

Retrieving Network Information

When , , or is pressed for the first time, 920P initiates Network Information retrieval; to retrieve it.

To update manually, → **Settings** → → **Connectivity** → → **Retrieve NW Info** → → **YES** →

English Interface

→ **設定** → → **ディスプレイ設定** → → **Language** → → **English** →

My Number

Date & Time

→ **Settings** → → **Date & Time** → → **Date & Time** → → Enter year → → Enter date → → Enter time → → Time Zone → → to select a time zone → →

Manner Mode

Please use your handset responsibly. Inappropriate handset use can be both dangerous and bothersome.

In Standby, press and hold

Calls

Making Voice Calls

Enter number with area code →
• to end call

Calling from Outgoing Call Log

→ An entry →
• to end call

Making Video Calls

Enter number with area code →
• to end call

Calling Abroad from Japan

Enter number → → **Int'l dial assist** →
→ A country → →

Answering a Call

• to end call

Answer Phone

Record messages on handset when unable to answer incoming calls.

Activating

Press and hold
• When Answer Phone is active, [TBD] appears in Standby.

• To cancel: Press and hold again.

Playing Messages

In Standby, to select [TBD] → → A message →

Deleting Messages

→ **Tools** → **Answer Phone/Recording** → **Voice Call Data** or **Voice Call Data** → → A message → → **Delete** → → **YES** →

Answer Phone is unavailable when handset is off, out-of-range or Offline.

Text Entry

toggling Entry Modes

In text entry window, to toggle input modes (or press → **1 byte character** or **2 byte character** to toggle double-/single-byte) → Enter text

Character Input Mode	
	Kanji/Hiragana input mode
	Katakana input mode
	Alphabet input mode
	Numeral input mode

Example: Entering "no"

In text entry window, → **abc/2** → → → →

Messaging

S! Mail/SMS

S! Mail

Exchange text messages with e-mail compatible handsets, PCs, etc.; attach image/sound files etc.

SMS

Exchange short text messages with SoftBank handsets.

Customizing Handset Address

Change your handset mail address (alphanumerics before @) to reduce the risk of receiving spam.

→ **Settings** → → **Custom Mail Address** → → Follow onscreen instructions

Sending S! Mail & SMS

→ **Create New** (**Create New SMS** for SMS) → → Address field → → **Phone Book** → → An entry → → A number/mail address → → Subject field → → Enter subject → → Attachment field → → A folder → → A file → → Text field → → Enter text → →
• Subject and attachment fields are not available for SMS.

Receiving S! Mail & SMS

In Standby, to select [TBD] → → A folder → → An unread message →

Phone Book

Phone Book Entry Items

Phone Number

Save up to four entries in Phone Book; two in USIM Card Phone Book.

E-mail Address

Save up to three entries in Phone Book; one in USIM Card Phone Book.

Saving to Phone Book

Press and hold → Enter name → → An item → → Enter information → →

Save Settings

Select Phone Book memory for new entries.
 → **Phone Book** → → **Settings** → → **Save Settings** → → **Phone, USIM** or **Ask Every Time** →
• Select **Ask Every Time** to select target each time you save an entry.

Editing Phone Book Entries

→ An entry → → → **Edit phonebook** → → An item → → Edit → → → **YES** →

Making Calls from Phone Book

→ to select a page of the required reading
→ An entry → → A phone number →

Voice Mail

Activating Voice Mail

→ **Settings** → → **Call Settings** → → **Voice Mail/Call Fwding** → → **Voice Mail ON** → → **Ringer Off** or **Ringer On** → → Ring time (for **Ringer On**) → → **YES** → →

Checking Voice Mail Messages

In Standby, to select [TBD] → → **YES** → → Follow voice guidance
• To switch to English voice guidance, press while Japanese voice guidance is playing.
 1.あ while Japanese voice guidance is playing.

Camera

Capturing Still Images

→ Frame subject → →
→ Select a folder to save → →

Recording Videos

Press and hold → Frame subject → → → → Select a folder to save → →

Yahoo! Keitai

Yahoo! Keitai Main Menu

→ **メニュー/リスト** → → **English** → → A menu item →

PC Site Browser

→ **Yahoo! Keitai** → → **PC Site Browser** → → **Homepage** → → → → A menu item →

Music Player

Playing Music

→ **Music Player** → → **Player** → → An item → → A file →
• To end playback,

TV

Initial Setup

→ **TV** → → **Channel Setting** → → **Automatic** → → **YES** → → **YES** → → Enter title →

Watching TV

Switch handset to Horizontal Open Style (→Front page) → Extend Antenna → to activate TV → **YES** → → - , , , or to select a channel
• to adjust volume
• To exit, → **YES** →

Managing Files

Opening Files

→ **Data Folder** → → A folder → → A file →

Formatting Memory Card

→ **Tools** → → **SD Memory Card Backup** → → → **microSD format** → → → Enter 4-digit Handset Code → → **YES** →

Software Update

Precaution

Fully charge battery beforehand.

Updating Software

→ **Settings** → → **Phone Settings** → → **Software Update** → → → Follow onscreen instructions