

Support

Customer Service

Call these numbers toll free from landlines.

SoftBank Customer Centers

From a SoftBank handset, dial toll free at
157 (General Information)
113 (Customer Assistance)

SoftBank Global Call Center

From outside Japan, dial
 +81-3-5351-3491*
 (International charges will apply.)

*Call immediately if handset/USIM is lost or stolen while outside Japan.

Subscription Area	Service Center	Toll Free Number
Hokkaido, Aomori, Akita, Iwate, Yamagata, Miyagi, Fukushima, Niigata, Tokyo, Kanagawa, Chiba, Saitama, Ibaraki, Tochigi, Gunma, Yamanashi, Nagano, Toyama, Ishikawa, Fukui	General Information	0088-240-157
	Customer Assistance	0088-240-113
Aichi, Gifu, Mie, Shizuoka	General Information	0088-241-157
	Customer Assistance	0088-241-113
Osaka, Hyogo, Kyoto, Nara, Shiga, Wakayama	General Information	0088-242-157
	Customer Assistance	0088-242-113
Hiroshima, Okayama, Yamaguchi, Tottori, Shimane, Tokushima, Kagawa, Ehime, Kochi, Fukuoka, Saga, Nagasaki, Oita, Kumamoto, Miyazaki, Kagoshima, Okinawa	General Information	0088-250-157
	Customer Assistance	0088-250-113

Emergency Numbers

- Police **110**
- Fire & Ambulance **119**
- Coast Guard **118**

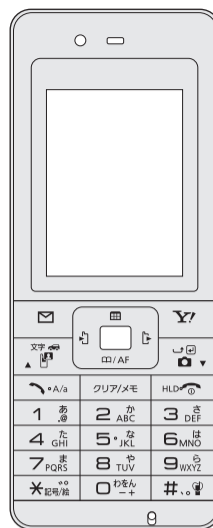
More Information

- **Handset User Support**
Via Yahoo! Keitai Main Menu: From above search field, select **メニュー** → **English** → **User Support**.
- **Online English Manual**
<http://www.softbank.jp/mb/r/support/822p/>
May be unavailable at purchase. Call Customer Service or try later.



3TR100031AAA

SoftBank 822P First Step Guide



Customer Service

Emergency Numbers

More Information

Use English Interface

Global Roaming

Customize Handset Address

and more...

Safety Precautions

- Use specified battery, charger and holder. The use of devices other than those specified may result in malfunction of handset or battery. Leaking, overheating, explosion or fire may occur.
- Do not get handset, battery and charger wet. If liquids such as water or pet urine get into battery and charger, they may cause overheating, electric shock or malfunction. Do not use handset in damp places like bathrooms.
- Do not use handset while driving a vehicle. Doing so may interfere with safe driving and cause an accident. Stop your vehicle to park in a safe place before using handset. Drivers using handsets while driving are subject to prosecution.
- Do not throw or otherwise subject to strong force or impacts. Battery may leak, overheat, explode, catch fire, or cause damage to handset.
- Turn off handset where use is prohibited, such as aboard aircraft or in hospitals. Handset may interfere with the operation of sensitive devices and electronic medical equipment. Follow the instructions given by the respective medical facilities regarding the use of mobile phones on their premises. In addition, actions such as speaking on a mobile phone aboard aircraft are prohibited and may be punishable by law.
- Do not disassemble or modify handset. May cause accidents such as fire, bodily injury, electric shock or equipment malfunction.
- Keep handset off and charger disconnected in filling stations or places where flammable gas is generated. Handset use in such areas may lead to fire.
- Do not use or leave handset, battery or charger in locations subject to high temperature, such as near an open flame, in sunlight or inside a car on an extremely hot day. Battery may leak, overheat, explode, catch fire, or deform handset and cause damage. Part of the casing may also become hot and cause burns.

For more information, see "Safety Precautions" in User Guide (Japanese).

Handling Precautions

General Notes

- SoftBank is not liable for damages from accidental loss/alteration of handset/Memory Card information (Phone Book entries, image/sound files, etc.). Back-up important information.
- Handset transmissions may be disrupted inside buildings, tunnels or underground, or when moving into/out of such places.
- Use handset without disturbing others.
- If handset is left with no battery or an exhausted one, data may be altered/lost. SoftBank is not liable for any resulting damages.
- Handset use near landlines, TVs or radios may cause interference.

Electromagnetic Waves

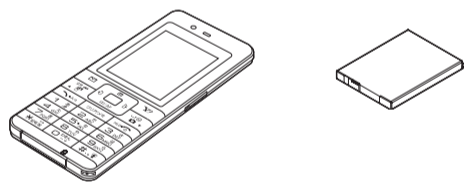
- Beware of eavesdropping. Digital signals reduce interception, however transmissions may be overheard. Deliberate/accidental interception of communications constitutes eavesdropping. "eavesdropping" means radio communication is received by another receiver deliberately or accidentally.
- For body worn operation, this mobile phone has been tested and meets RF exposure guidelines when used with an accessory containing no metal and positioning the handset a minimum 15 mm from the body. Use of other accessories may not ensure compliance with RF exposure guidelines.

For more information, see "Handling Precautions" in User Guide (Japanese).

Before Using Handset

Package Contents

- Handset (822P)
- Battery (PMBAE1)
- User Guide (Japanese)
- First Step Guide
- Raku Raku Start Book (Japanese)
- Utility Software (CD-ROM)*



*Utility Software updates/upgrades may be released on SOFTBANK MOBILE Corp. Website (<http://www.softbank.jp>) without prior notification. Please check for the newest versions of utility applications and download as required.

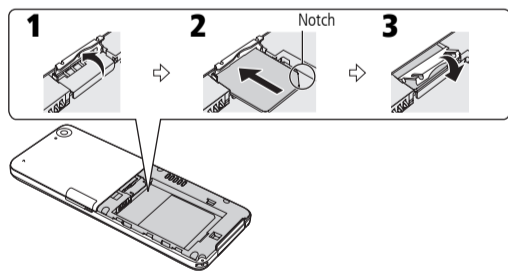
Manner Mode

- Minding Mobile Manners
Please use your handset responsibly. Inappropriate handset use can be both dangerous and bothersome. Please take care not to disturb others when using your handset. Adjust handset use according to your surroundings.

Activating/Canceling Manner Mode

- In Standby, press and hold **[#][*]**.

USIM Card Installation

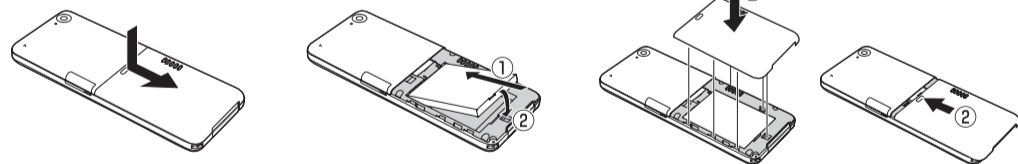


- 1 Open USIM Holder
- 2 Insert USIM Card (gold IC facing down) as shown
- 3 Close USIM Holder

USIM Card must be inserted to use this handset. Turn handset off and remove battery before inserting/removing USIM Card.

Battery Installation

- 1 Press and slide to remove cover
- 2 Insert battery
- 3 Replace battery cover



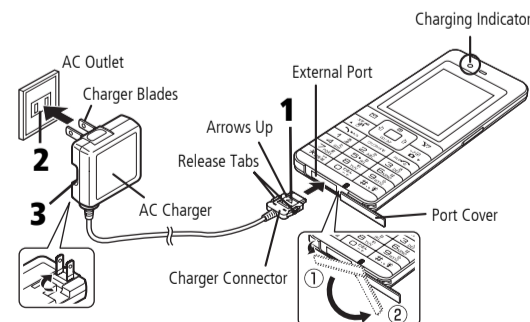
USIM PINs

- PIN1
4 to 8-digit code used to prevent unauthorized 822P use.
● PIN1 can be changed.
● When PIN Entry is ON, PIN1 entry is required each time handset is turned on (with USIM Card inserted).
- PIN2
Required to clear All Calls or set Cost Limit and Currency Setting.
● PIN2 can be changed.
- PIN Lock & Cancellation (PUK)
PIN1 Lock or PIN2 Lock is activated if PIN1 or PIN2 is incorrectly entered three times. Cancel PIN1 Lock or PIN2 Lock by entering the PIN Unlocking Key (PUK1/PUK2).
● If PUK is incorrectly entered ten times, USIM Card is locked and handset is disabled. Write down PUK.
● For procedures required to unlock USIM Card, contact SoftBank Customer Center, General Information.

Charging

Use only specified AC Charger (sold separately).

- 1 Connect AC Charger to handset
- 2 Plug AC Charger into AC Outlet
● Charging Indicator illuminates and charging starts; may take up to approximately 130 minutes.
● When charging is complete, Charging Indicator goes out.
- 3 Unplug AC Charger, then disconnect handset



Passwords

- Handset Code
Required to use/change some handset functions.
● * appears for each digit entered.
● Handset Code (9999 by default) can be changed on handset.
- Center Access Code
4-digit number specified at initial subscription; required to access Voice Mail via landlines or subscribe to fee-based information.
- Call Barring Password
4-digit number specified at initial subscription, required to restrict handset services.
● If entered incorrectly three times, Call Barring settings lock; Call Barring Password & Center Access Code must be changed. Reach SoftBank Customer Center, General Information for details.

Specifications

Weight (including battery)	96 g*
Dimensions	51 x 127 x 8.9 mm*
Talk Time	3G: 200 minutes* Video Call: 90 minutes* GSM: 200 minutes*
Standby Time	3G: 400 hours* GSM: 300 hours*

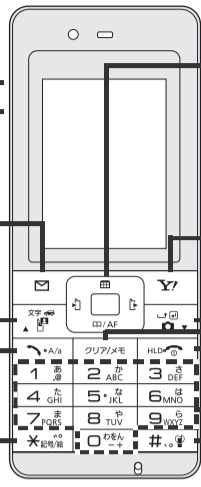
Charging Time	AC Charger: 130 minutes* In-Car Charger: 130 minutes*
Maximum Output	3G: 0.25 W GSM: 2.0 W

* Approximate value
● Values were calculated with battery installed.

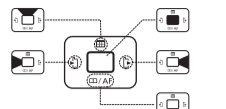
Getting Started

Display Indicators & Key Assignments

	Signal Strength
	3G/GSM Packet Transmission Available
	Unread Message
	Memory Card Inserted
	Manner Mode
	Battery Level
	Voice Message
	Alarm Set
	Open Messaging menu or execute Left Softkey functions
	Initiate Video Call; toggle input mode in text entry windows; press and hold in Standby to toggle Drive mode
	Initiate/answer call; toggle upper/lower case roman letters in text entry windows
	Access pictographs/symbols in text entry windows; press and hold to toggle Simple mode



Use Multi Selector to select items, navigate menus, etc. In this manual, Multi Selector operations are indicated as shown below.



Basic Multi Selector Operations

- : Press or
- : Press or
- : Press , , or

- : Open Yahoo! Keitai Main Menu or execute Right Softkey functions
- : Activate Camera in Standby or enter a line break in a text entry window
- : Delete characters or highlighted items
- : Turn handset power on/off; return to Standby
- : Enter numbers/characters
- : Press and hold in Standby to toggle Manner mode

Function List

Messaging	S! Appli	Voice Recorder	Retrieve NW Info
Incoming Mail	S! Appli Library	Software Update	Phone Book
Create New S! Mail	S! Appli Settings	Data Folder	Phone Book
Retrieve New	Information	Pictures	Create New Entry
Drafts	Communication	Ring Songs&Tones	Call Log
Templates	S! Town	S! Appli	Group
Sent Messages	S! Loop	Music	Account Details
Unsent Messages	Near Chat	Videos	Speed Dial
Server Mail Box	Camera	Books	S! Addressbook Back-up
Create New SMS	Camera	S! Familiar Usability	Settings
Settings	Video Camera	Templates	Memory Manager
Memory Status	Entertainment	Memo Pad	Settings
Yahoo! Keitai	Media Player	Flash(R)	Sound Settings
Yahoo! Keitai	BookSurfing	Other Documents	Display Settings
Bookmarks	e-Book Viewer	Memory Status	Phone Settings
Saved Pages	Tools	Bar Code Reader	Security
Enter URL	Alarms	Scan Barcodes	Call Settings
History	Calendar	Saved Data List	Mode Settings
S! Quick News	Answer Phone	Connectivity	Location Settings
PC Site Browser	Calculator	Infrared	Memory Card Manager
Settings	Memo Pad	Bluetooth	

Handset Functions

Most operation descriptions below begin in Standby.

Basic Operations

Handset Power On/Off

Power On

Press for 3+ seconds

Power Off

Press for 2+ seconds

- Keyguard is activated after two minutes of inactivity in Standby. appears.

To unlock Keyguard: →

Retrieving Network Information

When , , or is pressed for the first time, 822P initiates Network Information retrieval; to retrieve it.

To update manually, → **Connectivity** → → **Retrieve NW Info** → →

English Interface

→ **設定** → → **一般設定** → → **Language** → → **English** →

My Number

→

Date & Time

→ **Settings** → → **Phone Settings** → → **Date & Time** → → **Home Clock** → → **Date & Time** → → Enter date → → Enter time →

Calls

Making Voice Calls

Enter number with area code → →

- to end call

Calling from Outgoing Call Log

→ A phone number →

- to end call

Making Video Calls

Enter number with area code →

- to end call

Calling Abroad from Japan

First, apply for International Call Service. Details and applications are available online: http://mb.softbank.jp/mb/en/global_service/

Enter number → → **International Call** →

→ A country → →

- to end call

Answering a Call

- to end call

Answer Phone

Record messages on handset when unable to answer incoming calls.

Activating

Press and hold

- When Answer Phone is active, appears in Standby.

- To cancel: Press and hold again

Playing Messages

In Information window, **Answer Phone** → → A message →

Deleting Messages

A message → → **Delete** → →

Answer Phone is unavailable when handset is off, out-of-range or Offline.

Text Entry

Toggle Entry Modes

In text entry window, to toggle input modes (or press and hold to toggle double-/single-byte) → Enter text

abc1/2	Single-byte alphanumerics
abc1/1	Double-byte alphanumerics
1231/2	Single-byte numbers
1231/1	Double-byte numbers
漢1/1	Kanji (Hiragana)
か1/2	Single-byte katakana
か1/1	Double-byte katakana

Example: Entering "no"

In text entry window, → **abc¹/2** → → → →

Messaging

S! Mail/SMS

S! Mail

Exchange text messages with e-mail compatible handsets, PCs, etc.; attach image/sound files, etc.

SMS

Exchange short text messages with SoftBank handsets.

Customizing Handset Address

Change your handset mail address (alphanumerics before @) to reduce the risk of receiving spam.

→ **Settings** → → **Custom Mail Address** → → Follow onscreen instructions

Sending S! Mail & SMS

→ **Create New S! Mail (Create New SMS for SMS)** → → **Add Address** → → **Phone Book** → → An entry → → A number/mail address → → **Add Subject** → → Enter subject → → **Input Text** → → Enter text → → **Add Attachment** → → Files → →

- **Add Subject** and **Add Attachment** are not available for SMS.

Receiving S! Mail & SMS

Information window opens and appears for a new message in Standby.

In Information window, **Message** → → A folder → → An unread message →

Phone Book

Phone Book Entry Items

Phone Number

Save up to three entries in Phone Book; two in USIM Card Phone Book. Emergency numbers (110, 119, 118) cannot be saved in Phone Book.

E-mail Address

Save up to three entries in Phone Book; one in USIM Card Phone Book.

Saving to Phone Book

→ **Phone Book** → → **Create New Entry** → → An item → → Enter information → →

Save Settings

Select Phone Book memory for new entries.

→ **Phone Book** → → **Settings** → → **Save Settings** → → **Phone, USIM** or **Ask Each Time** →

- Select **Ask Each Time** to select target each time you save an entry.

Editing Phone Book Entries

→ An entry → → **Edit** → → An item → → Edit → →

Making Calls from Phone Book

→ to select a page of the required reading → An entry → → A phone number →

Voice Mail

Activating Voice Mail

→ **Settings** → → **Call Settings** → → **Optional Services** → → **Voice Mail/Call Forwarding** → → **Voice Mail ON** → → **Ringer Off** or **Ringer On** → → Ring time (for **Ringer On**) →

Checking Voice Mail Messages

In Information window, **Voice Mail** → → Follow voice guidance

- To switch to English voice guidance, press while Japanese voice guidance is playing.

Camera

Capturing Still Images

→ Frame subject → → →

Recording Videos

Press and hold → Frame subject → → → **Save to Data Folder** → →

Yahoo! Keitai

Yahoo! Keitai Main Menu

→ **メニューリスト** → → **English** → → A menu item →

PC Site Browser

→ **Yahoo! Keitai** → → **PC Site Browser** → → **Homepage** → → → A menu item →

Global Roaming

Before You Leave Japan

Sign up for Global Roaming Service. Details and applications are available online: http://mb.softbank.jp/mb/en/global_service/

Network Mode

→ **Settings** → → **Call Settings** → → **Optional Services** → → **International Setting** → → **Select Network** → → **3G/GSM, 3G, GSM** or **Automatic** →

Making Calls while Abroad

- **Calling Domestic Landlines & Mobiles Abroad**
Enter a phone number →
- **Calling Other Countries from Abroad**
 → Press and hold → Enter a country number, area code and a phone number →
- Omit the first 0 from area code, except when calling Italy.

International Code is set to 0046010 by default. The number can be changed if required.

Managing Files

Opening Files

→ **Data Folder** → → A folder → → A file →

Formatting Memory Card

→ **Settings** → → **Memory Card Manager** → → **Format Memory Card** → → → Enter 4-digit Handset Code →

Software Update

Precaution

Fully charge battery beforehand.

Updating Software

→ **Tools** → → **Software Update** → → **Start Update** → → Follow onscreen instructions