

## お問い合わせ先一覧

お困りのときや、ご不明な点などがございましたら、お気軽に下記お問い合わせ窓口までご連絡ください。

ソフトバンク お客さまセンター	総合案内	ソフトバンク携帯電話から	157 (無料)
	紛失・故障受付	ソフトバンク携帯電話から	113 (無料)

ソフトバンク 国際コールセンター	海外からのお問い合わせおよび盗難・紛失のご連絡 +81-3-5351-3491 (有料)
---------------------	---

### ■一般電話からおかけの場合

ご契約地域	お問い合わせ内容	電話番号
北海道・青森県・秋田県・岩手県・ 山形県・宮城県・福島県・新潟県・ 東京都・神奈川県・千葉県・埼玉県・ 茨城県・栃木県・群馬県・山梨県・ 長野県・富山県・石川県・福井県	総合案内	☎0088-240-157 (無料)
	紛失・故障受付	☎0088-240-113 (無料)
愛知県・岐阜県・三重県・静岡県	総合案内	☎0088-241-157 (無料)
	紛失・故障受付	☎0088-241-113 (無料)
大阪府・兵庫県・京都府・奈良県・ 滋賀県・和歌山県	総合案内	☎0088-242-157 (無料)
	紛失・故障受付	☎0088-242-113 (無料)
広島県・岡山県・山口県・鳥取県・ 島根県・徳島県・香川県・愛媛県・ 高知県・福岡県・佐賀県・長崎県・ 大分県・熊本県・宮崎県・鹿児島県・ 沖縄県	総合案内	☎0088-250-157 (無料)
	紛失・故障受付	☎0088-250-113 (無料)

## First Step Guide

Before Using Handset 108

Getting Started 110

Handset Functions 113

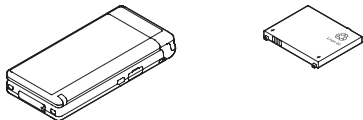
Handling Precautions 118

Support 120

## Before Using Handset

### Package Contents

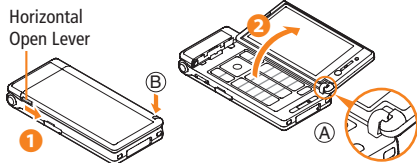
- Handset (930P)
- Battery (PMBAP1)



- Starter Guide

### Horizontal Open Position

Watch TV programs or use PC Site Browser, S! Appli, Camera, etc. in Horizontal Open Position (landscape view).

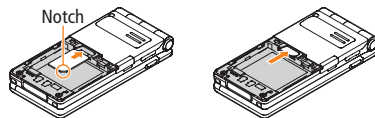


- 1 Slide and hold Horizontal Open Lever
- 2 Flip open (as indicated by arrow)

Hinge should be intact (A). If hinge is detached, close handset and try again.

Do not lift hinge portion (B) when opening handset.

### USIM Card Installation

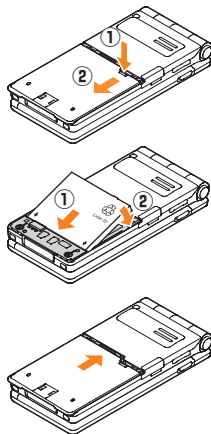


With IC chip down, insert USIM Card

USIM Card must be inserted to use this handset. Turn handset off and remove battery before inserting/removing USIM Card.

### Battery Installation

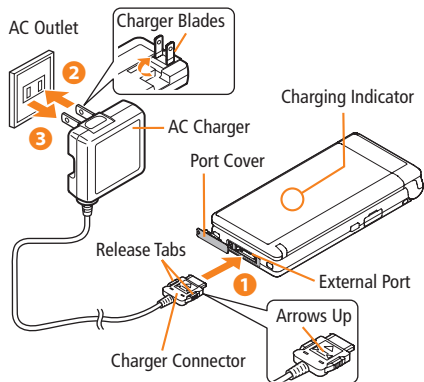
- 1 Press and slide to remove cover
- 2 Insert battery
- 3 Replace cover



### Charging

Use only specified AC Charger (sold separately).

- 1 Connect AC Charger to handset
- 2 Plug AC Charger into AC Outlet
- 3 Unplug AC Charger, then disconnect handset



### USIM PINs

- **PIN**  
4 to 8-digit code used to prevent unauthorized 930P use.
  - PIN can be changed.
  - When **PIN Authentication** is **ON**, PIN entry is required each time handset is turned on (with USIM Card inserted).

- **PIN2**  
Required to clear call times/costs or set maximum cost.
  - PIN2 can be changed.
- **PIN Lock & Cancellation (PUK)**  
PIN Lock or PIN2 Lock is activated if PIN or PIN2 is incorrectly entered three times. Cancel PIN Lock or PIN2 Lock by entering the PIN Unlocking Key (PUK/PUK2).
  - If PUK is incorrectly entered ten times, USIM Card is locked and handset is disabled. Write down PUK.
  - For procedures required to unlock USIM Card, contact SoftBank Customer Center, General Information.

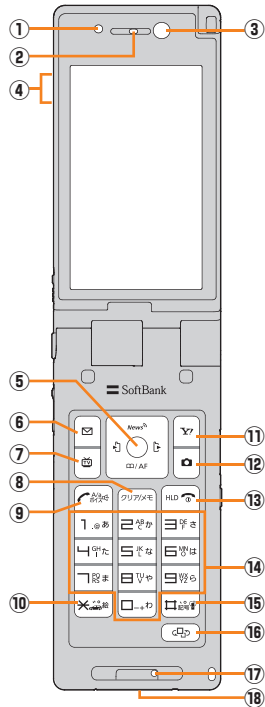
### Passwords

- **Phone Password**  
Required to use/change some handset functions.
  - appears for each digit entered.
  - Phone Password (**9999** by default) can be changed on handset.
- **Center Access Code**  
4-digit number specified at initial subscription; required to access Voice Mail via landlines or subscribe to fee-based information.
- **Security Code**  
4-digit number specified at initial subscription, required to restrict handset services.
  - If entered incorrectly three times, Call Barring settings lock; Security Code & Center Access Code must be changed. Reach SoftBank Customer Center, General Information for details.

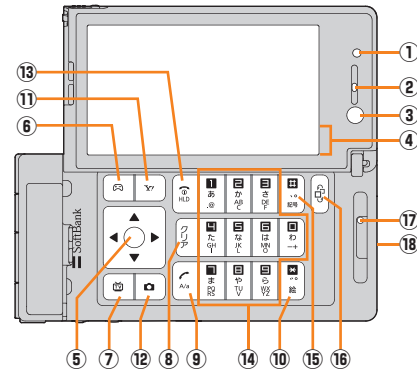
# Getting Started

## Parts, Display Indicators & Key Assignments

### ● Normal Open Position



### ● Horizontal Open Position



- Key labels differ between Normal Open Position and Horizontal Open Position. This manual uses unified set of key icons.
- Handset operations are based on defaults for handset color Red and sample screenshots use Pattern 1 (Menu icons) and Red (Color). Key icons design is based on key labels for handset colors Black and Silver.

1	Light Sensor: Detect ambient light
2	Earpiece
3	Inside Camera: Use during Video Calls; capture a self-portrait
4	Signal Strength
	Packet Transmission Available (Both indicators appear while abroad.)
	Unread Message
	microSD Card Inserted
	Manner Mode
	Battery Level
	Voice Mail
	Alarm Set
5	Multi Selector: Select items, navigate menus, etc.
	<p>Basic Multi Selector Operations</p> <ul style="list-style-type: none"> <li>● Press [Menu] or [Color]</li> <li>● Press [Color] or [Menu]</li> <li>● Press [Color], [Menu], [Color] or [Menu]</li> </ul>
6	Open Messaging menu or execute Upper Left Softkey functions (Normal Open Position)
	Open S! Appli List (Horizontal Open Position)

7	Activate TV or execute Lower Left Softkey functions
8	Delete characters or highlighted items
9	Initiate/answer call; press and hold to activate Voice Dial
10	Access pictograms in text entry windows; press and hold to toggle Driving Mode
11	Open Yahoo! Keitai Main Menu or execute Upper Right Softkey functions
12	Activate Camera in Standby or execute Lower Right Softkey functions
13	Return to Standby; press and hold to turn handset power on/off
14	Enter numbers/characters
15	Press and hold in Standby to toggle Manner Mode
16	Activate Yahoo! Keitai or press and hold to activate Music Player in Standby; toggle Yahoo! Keitai and TV
17	Microphone
18	External Port: Connect AC Charger or other accessories (sold separately) here

## Function List

Messaging
Incoming Mail
Create New
Retrieve New
Drafts
Templates
Sent/Unsent Messages
Server Mail
Create New SMS
Settings
Memory Status
Yahoo! Keitai
Yahoo! Keitai
Bookmarks
Saved Pages
Enter URL
History
PC Site Browser
Set Yahoo! Keitai
Reset
S! Appli
S! Appli List
Osaifu-Keitai
S! Appli Settings
S! Appli History

Information
Osaifu-Keitai
Lifestyle-Appli
IC Card Settings
Camera
Camera
Video Camera
Pictures
Videos
Entertainment
S! Quick News
BookSurfing
e-Book Viewer
S! Town
S! Loop
Tools
Alarms
Calendar
Calculator
Notepad
Tasks
Sound Recorders
Bar Code Reader
S! GPS Navi
Bluetooth

Receive via Infrared
microSD Backup
Templates/Users Dic.
Data Folder
Pictures
Ring Songs&Tones
S! Appli
Music
Videos
PC Movies
TV
Lifestyle-Appli
Books
Customized Screen
Templates
Other Documents
Music Player
Player
Data Manager
TV
Watch TV
Program List
Timer Watching
Timer Recording
Recording Result
TV Link
Channel List

Channel Setting
User Settings
Phone Book
Phone Book
Create New Entry
Call Log
Group
Account Details
S! Addressbook BkUp
Memory Manager
Restrictions
Settings
Memory Status
Settings
Sound Settings
Display Settings
Customized Screen
Incoming Settings
Phone Settings
Date & Time
Security
Call Settings
Video Call
International Call
Connectivity
Notification Light

## Handset Functions

Most operation descriptions below begin in Standby.

## Basic Operations

## Handset Power On/Off

## Power On

Open handset → Press and hold

## Power Off

Open handset → Press for 2+ seconds

## English Interface

→ 設定 → ディスプレイ設定 → Language → English

## Retrieving Network Information

When , , or is pressed for the first time, 930P initiates Network Information retrieval; to retrieve it. To update manually, → Settings → Connectivity → Retrieve NW Info → YES

## Date &amp; Time

→ Settings → Date & Time → Date & Time → Enter year → → Enter date → → Enter time → → time zone → → to select a time zone →

## My Number

→ 0

## Minding Mobile Manners

Please use your handset responsibly. Inappropriate handset use can be both dangerous and bothersome. Please take care not to disturb others when using your handset. Adjust handset use according to your surroundings.

## Activating/Canceling Manner Mode

In Standby, press and hold .

## Horizontal View

Set Horizontal Open Menu, TV or Camera to activate when handset is opened in Horizontal Open Position.

→ Settings → Phone Settings → Horizontal View → Horizontal Open Menu, TV, Camera or OFF

## Call

## Making Voice Calls

Enter number with area code →

- to end call

## Calling from Redial Log

→ An entry →

- to end call

## Making Video Calls

Enter number with area code →

- to end call

