

## お問い合わせ先一覧

お困りのときや、ご不明な点などがございましたら、お気軽に下記お問い合わせ窓口までご連絡ください。  
電話番号はお間違いのないようおかけください。

ソフトバンクモバイル お客さまセンター	総合案内 紛失・故障受付	ソフトバンク携帯電話から 157 (無料) ソフトバンク携帯電話から 113 (無料)
ソフトバンクモバイル 国際コールセンター	海外からのお問い合わせおよび盗難・紛失のご連絡 +81-3-5351-3491 (有料)	

### ■一般電話からおかけの場合

ご契約地域	お問い合わせ内容	電話番号
北海道・青森県・秋田県・岩手県・ 山形県・宮城県・福島県・新潟県・ 東京都・神奈川県・千葉県・埼玉県・ 茨城県・栃木県・群馬県・山梨県・ 長野県・富山県・石川県・福井県	総合案内	☎0088-240-157 (無料)
	紛失・故障受付	☎0088-240-113 (無料)
愛知県・岐阜県・三重県・静岡県	総合案内	☎0088-241-157 (無料)
	紛失・故障受付	☎0088-241-113 (無料)
大阪府・兵庫県・京都府・奈良県・ 滋賀県・和歌山県	総合案内	☎0088-242-157 (無料)
	紛失・故障受付	☎0088-242-113 (無料)
広島県・岡山県・山口県・鳥取県・ 島根県・徳島県・香川県・愛媛県・ 高知県・福岡県・佐賀県・長崎県・ 大分県・熊本県・宮崎県・鹿児島県・ 沖縄県	総合案内	☎0088-250-157 (無料)
	紛失・故障受付	☎0088-250-113 (無料)

106

## First Step Guide

Before Using Handset 108

Getting Started 110

Handset Functions 113

General Notes 118

Support 120

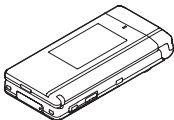
See Online User Guide for "Safety Precautions."  
<<http://www.softbank.jp/mb/r/support/931p/>>

107

## Before Using Handset

### Package Contents

- Handset (931P)
- Battery (PMBAP1)

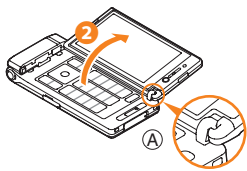


- Starter Guide

### Horizontal Open Position

Watch TV programs or use PC Site Browser, S! Appli, Camera, etc. in Horizontal Open Position (landscape view).

Horizontal Open Lever



- 1 Slide and hold Horizontal Open Lever
- 2 Flip open (as indicated by arrow)

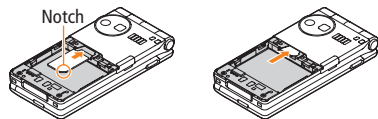
Hinge should be intact (A). If hinge is detached, close handset and try again.

Do not lift hinge portion (B) when opening handset.

108

First Step Guide

### USIM Card Installation

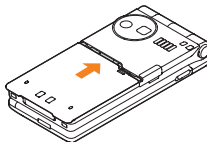
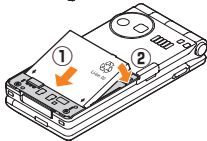
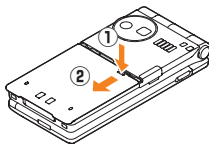


With IC chip down, insert USIM Card

USIM Card must be inserted to use this handset. Turn handset off and remove battery before inserting/removing USIM Card.

### Battery Installation

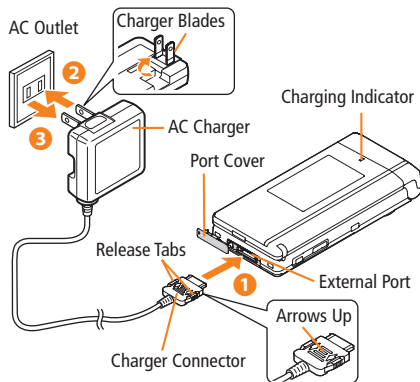
- 1 Press and slide to remove cover
- 2 Insert battery
- 3 Replace cover



### Charging

Use only specified AC Charger (sold separately).

- 1 Connect AC Charger to handset
  - Charging Indicator illuminates and charging starts; may take up to approximately XXX minutes.
  - When charging is complete, Charging Indicator goes out.
- 2 Plug AC Charger into AC Outlet
- 3 Unplug AC Charger, then disconnect handset



### USIM PINs

- **PIN**  
4 to 8-digit code used to prevent unauthorized handset use.
  - PIN (9999 by default) can be changed.
  - When **PIN Authentication** is ON, PIN entry is required each time handset is turned on (with USIM Card inserted).

- **PIN2**  
Required to clear call times/costs or set maximum cost.
  - PIN2 (9999 by default) can be changed.
- **PIN Lock & Cancellation (PUK/PUK2)**  
PIN Lock or PIN2 Lock is activated if PIN or PIN2 is incorrectly entered three times. Cancel PIN Lock or PIN2 Lock by entering the PIN Unblocking Key (PUK/PUK2).
  - If PUK/PUK2 is incorrectly entered ten times, USIM Card is locked and handset is disabled. Write down PUK/PUK2.
  - For procedures required to unlock USIM Card, contact SoftBank Mobile Customer Center, General Information.

### Passwords

- **Phone Password**  
4 to 8-digit number required to use/change some handset functions.
  - Enter number within 15 seconds.
  - \_ appears for each digit entered.
  - Phone Password (9999 by default) can be changed on handset.
- **Center Access Code**  
4-digit number specified at initial subscription; required to access Voice Mail via landlines or subscribe to fee-based information.
- **Security Code**  
4-digit number specified at initial subscription, required to restrict handset services.
  - Enter number within 15 seconds.
  - If entered incorrectly three times, Call Barring settings lock; Security Code & Center Access Code must be changed. Reach SoftBank Mobile Customer Center, General Information for details.

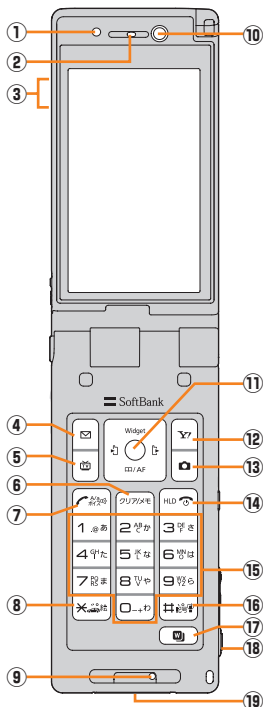
First Step Guide

109

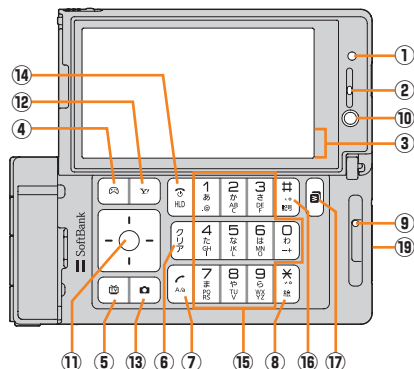
# Getting Started

## Parts, Display Indicators & Key Assignments

### ● Normal Position



### ● Horizontal Open Position



- Key labels differ between Normal Position and Horizontal Open Position. Key icons in this guide use labels in Normal Position.
- Handset operations and screenshots are based on defaults for handset color Pink.

1	Light Sensor: Detects ambient light
2	Earpiece
3	Signal strength
4/5	Packet transmission available (Both indicators appear while abroad.)
4	Unread message
5	microSD Card inserted
6	Manner Mode
7	Battery level
8	Voice Mail
9	Alarm set
4	Open Messaging menu or execute Upper Left Softkey functions (Normal Position)
6	Open S! Appli List or execute Upper Left Softkey functions (Horizontal Open Position)
5	Activate TV or execute Lower Left Softkey functions
6	Delete characters or highlighted items
7	Initiate/answer call; press and hold to activate Voice Dial
8	Access pictograms in text entry windows; press and hold to toggle Driving Mode
9	Microphone
10	Inside Camera: Use during Video Calls; capture a self-portrait

11	Multi Selector: Select items, navigate menus, etc.
	<b>Basic Multi Selector Operations</b> <ul style="list-style-type: none"> <li>● Press  or </li> <li>● Press  or </li> <li>● Press  or  or </li> </ul>
12	Open Yahoo! Keitai Main Menu or execute Upper Right Softkey functions
13	Activate Camera or execute Lower Right Softkey functions
14	Return to Standby; press and hold to turn handset power on/off
15	Enter numbers/characters
16	Press and hold to toggle Manner Mode
17	Open Widget list; press and hold to activate Music Player
18	Press and hold to activate Camera; shoot pictures/video clips; show missed calls/new messages on External Display (with handset closed)
19	External Port: Connect AC Charger or other accessories (sold separately) here

## Getting Started

### Function List

#### Messaging

Incoming Mail
Create New
Retrieve New
Drafts
Templates
Sent/Unsent
Server Mail
Create New SMS
Settings
Memory Status

#### Yahoo! Keitai

Yahoo! Keitai
Bookmarks
Saved Pages
Enter URL
History
PC Site Browser
Set Yahoo! Keitai
Reset

#### S! Appli

S! Appli List
Osaifu-Keitai
S! Appli Settings
S! Appli History
Information

#### Osaifu-Keitai

Lifestyle-Appli
IC Card Settings

#### Camera

Camera
Video Camera
Pictures
Videos

#### Entertainment

Mobile Widget
S! Quick News
S! Info Ch./Weather
BookSurfing
e-Book Viewer

#### Tools

Alarms
Calendar
Calculator
Notepad
Tasks
Dictionary
Sound Recorders
Bar Code Reader
S! GPS Navi
Bluetooth
Receive via Infrared
microSD Backup
Templates/Users Dic.

#### Data Folder

Pictures
Ring Songs&Tones
S! Appli

Widget
Music
Videos
PC Movies
TV
Lifestyle-Appli
Books
Customized Screen
Templates
Font
Other Documents
<b>Music Player</b>
Player
Data Manager
<b>TV</b>
Watch TV
Program List
Timer Watching
Timer Recording
Recording Result
TV Link
Channel List
Channel Setting
User Settings
<b>Phone Book</b>
Phone Book
Create New Entry
Call Log
Group
Account Details
S! Addressbook BkUp

Memory Manager
Restrictions
Settings
Memory Status
<b>Settings</b>
Sound Settings
Display Settings
Customized Screen
Incoming Settings
Phone Settings
Date & Time
Security
Call Settings
Video Call
International Call
Connectivity
Notification Light

## Handset Functions

Most operation descriptions below begin in Standby.

### Basic Operations

#### Handset Power On/Off

##### Power On

Open handset → Press and hold (⏻)

##### Power Off

Open handset → Press (⏻) for 2+ seconds

#### English Interface

☑ → 設定 → ディスプレイ設定 → Language → English

#### Retrieving Network Information

When (☑), (☒) or (☒) is pressed for the first time, 931P initiates Network Information retrieval; (☑) to retrieve it. To update manually, (☑) → Settings → Connectivity → Retrieve NW Info → YES

#### Date & Time

☑ → Settings → Date & Time → Date & Time → Enter year → (☑) → Enter date → (☑) → Enter time → (☑) → time zone → (☑) → (☒) to select a time zone → (☑)

#### My Number

☑ → (0)

#### Minding Mobile Manners

Please use your handset responsibly. Inappropriate handset use can be both dangerous and bothersome. Please take care not to disturb others when using your handset. Adjust handset use according to your surroundings.

#### Activating/Canceling Manner Mode

Press and hold (#).

#### Horizontal View

Set Horizontal Open Menu, TV or Camera to activate when handset is opened in Horizontal Open Position.

☑ → Settings → Phone Settings → Horizontal View → Horizontal Open Menu, TV, Camera or OFF

#### Call

#### Making Voice Calls

Enter number with area code → (☑)

- (☑) to end call

#### Calling from Redial Log

(☑) → An entry → (☑)

- (☑) to end call

#### Making Video Calls

Enter number with area code → (☒)

- (☑) to end call

