

IK4310E Manual

Product	PESS FOB
Model	IK4310E
FCC ID	ACJ932IK4310E
Operational frequency band	433.87 to 433.97 (MHz)
Maximum Output Power	80.8dBuV/m @3m

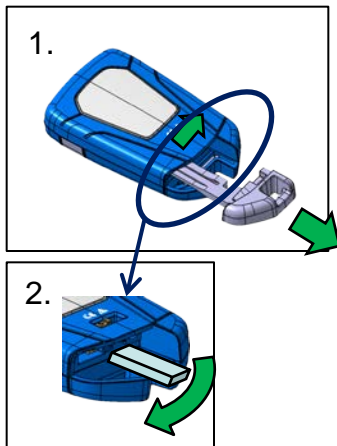
Since this device is always used with vehicle, it is not sold to general end users separately. Therefore there is no user manual of this device by alone. The following statements must be described on the user manual of the vehicle:

This device complies with part 15 of the FCC Rules. Operation is subject to the following two conditions: (1) This device may not cause harmful interference, and (2) this device must accept any interference received, including interference that may cause undesired operation.

FCC CAUTION

Changes or modifications not expressly approved by the party responsible for compliance could void the user's authority to operate the equipment.

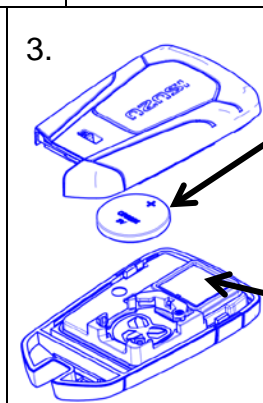
How to replace the battery and check the FCC ID



■ replace the battery

1. Remove the built-in key. To remove the built-in key, pull it out while sliding the release button.
2. Remove the emblem case. Carefully separating it with a emergency key.
 > Remove carefully to avoid loss of buttons.
3. Be sure to replace the battery with the correct polarity.

Battery Type: CR2032



■ FCC ID label

The FCC ID label can be confirmed by removing the emblem case. FCC ID is printed on the label.

FCC ID label