

## Installation Manual

This PCB assy with is to be installed only by the professionals and used only with a Car Audio produced by Panasonic Co., Ltd. When this PCB assy with Bluetooth for car audio is installed in the Car Audio, we shall consider the following points;

1. Since Model “YEAP01B892WLAN” owns its FCC ID Number / IC Number, we shall affix an exterior label on the outside of the product if the FCC ID Number and IC Number are not visible. The exterior label shall use wording such as either “Contained Transmitter Module FCC ID: ACJ932YEAP01A473W” , “Contained Transmitter Module IC: 216J- YEAP01A473W” or “Contained FCC ID: ACJ932YEAP01A473W”, “Contained IC: 216J- YEAP01A473W”
2. “YEAP01B892WLAN”, complies with requirements of sub-sections 15.19(a)(3) in FCC Rules Part 15 Subpart C. The manual statement (15.19 (a)(3) is included User Guide of the product.
3. “YEAP01B892WLAN”, is to be installed only by the professional line operator as shown in following pictures. (Fig 1 and 2)

Fig 1. Surface side of “YEAP01B892WLAN”

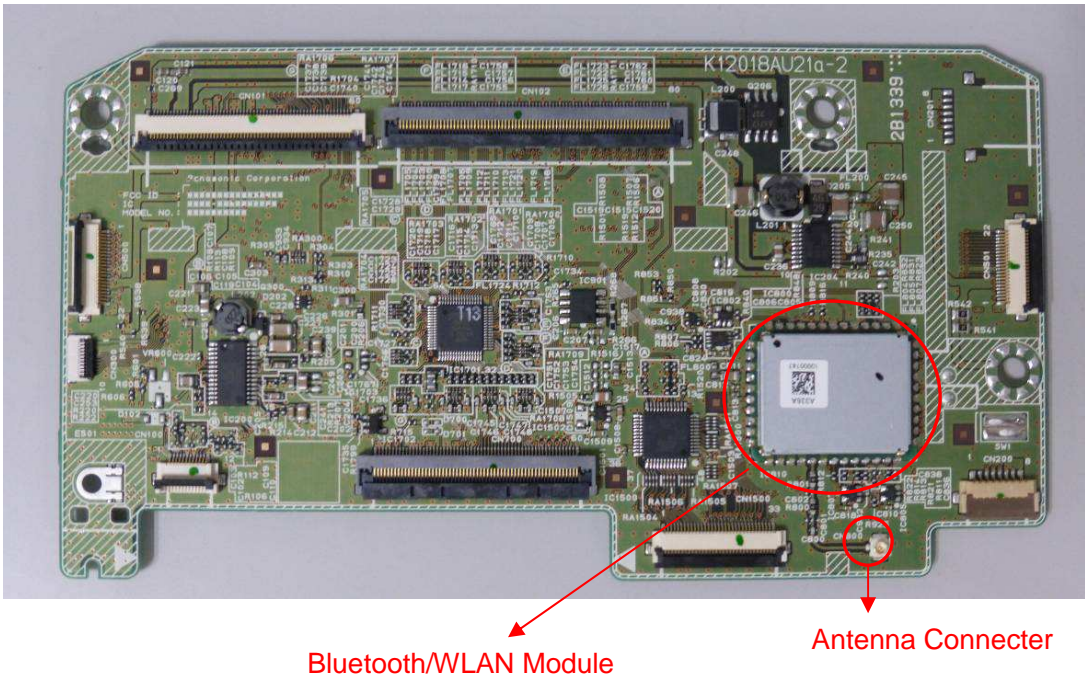


Fig 2. Top view of “YEAP01B892WLAN” be equipped for a Car Audio (example)

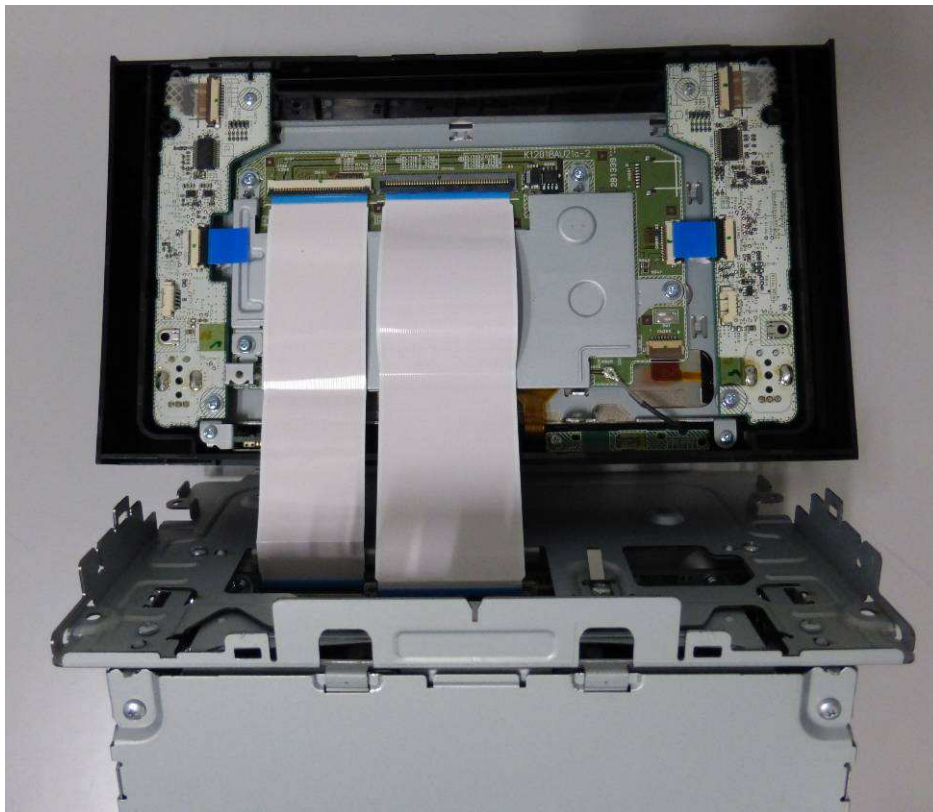


Fig 3. Top view of “YEAP01B892WLAN” be equipped for a Car Audio (example)



Fig 4. Front view of “YEAP01B892WLAN” be equipped for a Car Audio (example)



***There isn't an official user manual for this PCB assy with Bluetooth "YEAP01B892WLAN".***

***However, user manuals of final product which have the module, must contain notification corresponding to the following description.***

#### FCC WARNING

Changes or modifications not expressly approved by the party responsible for compliance could void the user's authority to operate the equipment.

Properly shielded a grounded cables and connectors must be used for connection to host computer and / or peripherals in order to meet FCC emission limits.

This device complies with Part 15 of FCC Rules and Industry Canada licence-exempt RSS standard(s).

Operation is subject to the following two conditions: (1) this device may not cause interference, and (2) this device must accept any interference, including interference that may cause undesired operation of this device.

This transmitter must not be co-located or operated in conjunction with any other antenna or transmitter.

This equipment complies with FCC/IC radiation exposure limits set forth for an uncontrolled environment and meets the FCC radio frequency (RF) Exposure Guidelines and RSS-102 of the IC radio frequency (RF) Exposure rules.

This equipment should be installed and operated keeping the radiator at least 20cm or more away from person's body (excluding extremities: hands, wrists, feet and ankles).

Under Industry Canada regulations, this radio transmitter may only operate using an antenna of a type and maximum (or lesser) gain approved for the transmitter by Industry Canada. To reduce potential radio interference to other users, the antenna type and its gain should be so chosen that the equivalent isotropically radiated power (e.i.r.p.) is not more than that necessary for successful communication.

This radio transmitter (identify the device by certification number, or model number if Category II) has been approved by Industry Canada to operate with the antenna types listed below with the maximum permissible gain and required antenna impedance for each antenna type indicated. Antenna types not included in this list, having a gain greater than the maximum gain indicated for that type, are strictly prohibited for use with this device.