

**Panasonic**<sup>®</sup>

## Installation Guide

Home Network System  
Smart Motion Light

Model No. **KX-HNL100**



**Thank you for purchasing a Panasonic product.**

This document explains how to install the unit properly.  
For details about how to use the system, refer to the User's Guide  
(page 20).

Please read this document before using the unit and save it for future  
reference.

For assistance, please contact us at 1-800-272-7033 or visit our Web site:  
**<http://shop.panasonic.com/support>** for customers in the U.S.A.

**Please register your product: <http://shop.panasonic.com/support>**

In order to use this device:

- Download the latest version of the **[Home Network]** app.
- Update your hub to the latest firmware version (version 5.50 or later).

For more information, refer to the User's Guide (page 20).

Printed in China



## **Table of Contents**

---

### **Introduction**

Accessory information .....3

### **Important Information**

About this system .....4

For your safety .....4

Important safety instructions .....6

For best performance .....6

Other information .....6

### **Installation Location**

Wireless communication range .....8

Information about sensor features .....8

Installation location examples .....9

Do not install in these locations .....10

### **Setup**

Part names and functions .....12

Confirming the status .....12

Setup overview .....12

Inserting the batteries .....13

Registering the unit .....14

Confirming the installation area .....14

Installation .....15

### **Appendix**

Features available when using the

[Home Network] app .....20

Accessing the User's Guide .....20

Specifications .....21

FCC and other information .....22

Customer services .....23

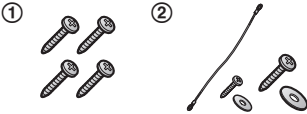
Limited Warranty (ONLY FOR

U.S.A.) .....24

## Accessory information

### Supplied accessories

No.	Accessory item/Part number	Quantity
①	Wall mounting screws (25 mm (1 inch))/XTB4+25AVW	4
②	Suspension wire tools – Safety wire: 1 PQME10080Z – Washers: 2 Small washer for attaching the safety wire to the unit ø12 mm (15/32 inches)/XWG26D12VW Large washer for attaching the safety wire to the wall ø16 mm (5/8 inches)/XWG4F16VW – Screws: 2 Small screw for attaching the safety wire to the unit 10 mm (3/8 inches)/XTB26+10GVW Large screw for attaching the safety wire to the wall 25 mm (1 inch)/XTB4+25AVW	1



### Other information

- Design and specifications are subject to change without notice.
- The illustrations in these instructions may vary slightly from the actual product.

### Trademarks

- iPhone and iPad are registered trademarks of Apple Inc.
- Android is a trademark of Google Inc.
- Microsoft, Windows, and Internet Explorer are either registered trademarks or trademarks of Microsoft Corporation in the United States and/or other countries.
- All other trademarks identified herein are the property of their respective owners.

## Important Information

### About this system

- This system is an auxiliary system; it is not designed to provide complete protection from property loss. Panasonic will not be held responsible in the event that property loss occurs while this system is in operation.
- The system's wireless features are subject to interference, therefore functionality in all situations cannot be guaranteed. Panasonic will not be held responsible for injury or damage to property that occurs in the event of wireless communication error or failure.

### For your safety

To prevent severe injury and loss of property, read this section carefully before using the product to ensure proper and safe operation of your product.

#### **WARNING**

##### Power connection

- Do not connect non-specified devices.

##### Installation

- Install this product in accordance with the provided instructions.
- Do not place or use this product near automatically controlled devices such as automatic doors and fire alarms. Radio waves emitted from this product may cause such devices to malfunction resulting in an accident.
- Do not mount the product in an unstable location, in a location subject to frequent vibration, on a ceiling, or on a weak wall. (Do not mount on gypsum board, concrete blocks,

wooden materials exposed to the outdoors, walls with very rough surfaces, or surfaces that are narrower than the width of the wall mount bracket.) There is a risk of injury if the product falls, or of fire or electric shock if water enters the product.

- Install the product only on a vertical surface. Do not install the product on a ceiling, as the product may fall, resulting in damage or injury.
- Keep small parts (screws, washers, etc.) out of the reach of children. There is a risk of swallowing. In the event they are swallowed, seek medical advice immediately.
- Panasonic will not be held responsible for damage or injury caused by improper connection, installation, or usage.

##### Operating safeguards

- Unplug the product from power outlets before cleaning. Do not use liquid or aerosol cleaners.
- Do not disassemble the product.
- Keep the sensor range caps out of the reach of children. There is a risk of swallowing. In the event they are swallowed, seek medical advice immediately.
- Never put metal objects inside the product. If metal objects enter the product, turn off the circuit breaker and contact an authorized service center.

##### Medical

- Consult the manufacturer of any personal medical devices, such as pacemakers or hearing aids, to determine if they are adequately shielded from external RF (radio frequency) energy. DECT features operate between 1.92 GHz and

## Important Information

1.93 GHz with a peak transmission power of 115 mW.

- Do not use the product in health care facilities if any regulations posted in the area instruct you not to do so. Hospitals or health care facilities may be using equipment that could be sensitive to external RF energy.

### CAUTION

#### Installation and location

- Although this product conforms to the IPX5\* code, do not intentionally expose it to water.  
\*IPX5 indicates that the product is protected against water jets: water projected at all angles through a 6.3 mm (1/4 inches) nozzle flow rate of 12.5 liters/minute at a pressure of 30 kN/m<sup>2</sup> for 3 minutes from a distance of 3 meters (9 feet 10 inches).
- Do not mount the product on the following materials: gypsum board, ALC (autoclaved lightweight cellular concrete), concrete block, plywood less than 25 mm (1 inch) thick, etc.

#### Preventing accidents and injuries

- The safety wire must be used when mounting the product. There is a risk of injury if the product falls.
- To avoid risk of damage to the eyes, do not look directly at the LED when it is lit.
- Consider the installation environment carefully when installing the product. Pay particular attention to infants, children, and the elderly, as they may be more sensitive to bright lights.

#### Optical radiation cautions

Possibly hazardous optical radiation emitted from this product

Do not stare at operating lamp. May be harmful to the eyes.

#### Battery

- Do not open or mutilate the batteries. Released electrolyte from batteries is corrosive and may cause burns or injury to the eyes or skin. The electrolyte is toxic and may be harmful if swallowed.
- Exercise care when handling batteries. Do not allow conductive materials such as rings, bracelets, or keys to touch batteries, otherwise a short circuit may cause the batteries and/or the conductive material to overheat and cause burns.
- The batteries should be used correctly, otherwise the product may be damaged due to battery leakage.
- Do not charge, short-circuit, disassemble, or heat the batteries.
- Do not dispose of batteries in a fire.
- Remove all the batteries when replacing.
- Do not mix old, new or different types of batteries.
- It is recommended that batteries are replaced annually.
- Keep out of the reach of small children. There is a risk of swallowing. If a battery is swallowed, seek medical attention immediately.
- Remove the batteries if they become unusable. There is a risk of leakage, overheating, and rupture. Do not attempt to use a battery if it is leaking.
- Do not intentionally pour water on the batteries or allow them to get wet. There is a risk of fire and smoke. If the batteries becomes wet, remove them immediately and contact an authorized service center.

## Important Information

### Important safety instructions

When using your product, basic safety precautions should always be followed to reduce the risk of fire, electric shock, and injury to persons, including the following:

1. Do not use this product near water for example, near a bathtub, washbowl, kitchen sink, or laundry tub, in a wet basement or near a swimming pool.
2. Use only the batteries indicated in this document. Do not dispose of batteries in a fire. They may explode. Check with local codes for possible special disposal instructions.

#### SAVE THESE INSTRUCTIONS

### For best performance

#### Hub location/avoiding noise

The hub and other compatible Panasonic devices use radio waves to communicate with each other.

- For maximum coverage and noise-free communications, place your hub:
  - at a convenient, high, and central location with no obstructions between the product and hub in an indoor environment.
  - away from electronic appliances such as TVs, radios, personal computers, wireless devices, or other phones.
  - facing away from radio frequency transmitters, such as external antennas of mobile phone cell stations. (Avoid putting the hub on a bay window or near a window.)

- If the reception for a hub location is not satisfactory, move the hub to another location for better reception.

#### Environment

- The product should be kept free from excessive smoke, dust, high temperature, and vibration.
- Keep the product away from electrical noise generating devices, such as fluorescent lamps and motors.
- The product should be kept free from excessive smoke, dust, high temperature, and vibration.
- Do not place heavy objects on top of the product.
- The product should be kept away from heat sources such as heaters, kitchen stoves, etc. It should not be placed in rooms where the temperature is less than  $-20\text{ }^{\circ}\text{C}$  ( $-4\text{ }^{\circ}\text{F}$ ) or greater than  $50\text{ }^{\circ}\text{C}$  ( $122\text{ }^{\circ}\text{F}$ ). Damp basements should also be avoided.
- Do not allow the infrared sensor to become scratched or dirty. (This may cause incorrect detections, malfunctions, or damage to the infrared sensor.)
- Operating the product near electrical appliances may cause interference. Move away from the electrical appliances.

### Other information

**CAUTION:** Risk of explosion if battery is replaced by an incorrect type. Dispose of used batteries according to the instructions.

#### Routine care

- Wipe the outer surface of the product with a soft moist cloth.
- Do not use any cleaning products that contain alcohol, polish powder,



---

## Important Information

powder soap, benzine, thinner, wax, petroleum, or boiling water. Also do not spray the product with insecticide, glass cleaner, or hair spray. This may cause a change in color or quality of the product.

- Do not apply running water to the product.

---

### Notice

- This product is designed for use in the United States of America. Sale or use of this product in other countries may violate local laws.
  - Cet appareil est conçu pour être utilisé aux États-Unis d'Amérique. La vente ou l'emploi de cet appareil dans certains autres pays peut constituer une infraction à la législation locale.
  - Este producto está diseñado para usarse en los Estados Unidos de América. La venta o el empleo de este producto en ciertos países puede constituir violación de la legislación local.
  - 本產品專為美國使用而設。若在其他國家銷售或使用，可能會違反當地法例。
  - この製品は、日本国外での使用を目的として設計されており、日本国内での使用は法律違反となります。従って、当社では日本国内においては原則として修理などのサービスは致しかねます。
- 
- 
- 

## Installation Location

### Wireless communication range

The wireless communication range of each device in the system from the hub is approximately 50 m (160 feet) indoors and approximately 300 m (1,000 feet) outdoors. Wireless communication may be unreliable when the following obstacles are located between the hub and other devices.

- Metal doors or screens
- Walls containing aluminum-sheet insulation
- Walls made of concrete or corrugated iron
- Double-pane glass windows
- Multiple walls
- When using each device on separate floors or in different buildings

### Information about sensor features

The unit utilizes an infrared sensor (i.e., heat sensor).

Please read the following information before deciding where to install the unit.

**Note:**

- The unit's motion sensor features are not designed to be used in situations that require high reliability. We do not recommend use of the unit's motion sensor features in these situations.
- Panasonic takes no responsibility for any injury or damage caused by the use of this unit.

### Using heat to detect motion

The unit's infrared sensor can detect motion by recognizing temperature differences that occur within the range of the sensor. It does this by detecting the infrared rays that are emitted naturally by people, animals, etc., which correlate to the object's temperature. The detection range is indicated in the illustration by the gray area in front of the unit.



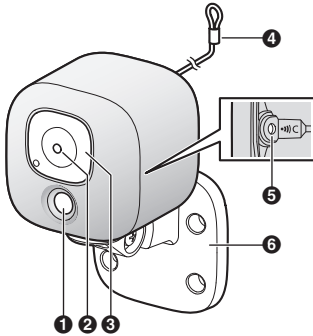
## **Do not install in these locations**

**Installing in the following areas may cause deformation, discoloration, malfunction, or operational failure**

- In direct sunlight or directly under an outdoor light (even if the surroundings are within operational temperature range, parts of the product may become hot)
- Areas subject to frequent vibration, shock, or impact
- Near fire, heating devices, magnetic fields (such as near magnets), or air conditioners (including outdoor equipment such as unit compressors)
- Areas exposed to grease or steam
- Near devices that emit strong radio waves, such as mobile phones
- Areas subject to extreme temperature changes (which can lead to condensation)
- Near coasts directly subjected to sea breezes, or near sulfuric hot springs (exposure to salt can shorten the life of the product)
- Near TVs, radios, automated office equipment such as computers, air conditioners, water heater panels (with intercom), or home security equipment (these may cause noise)
- Near satellite broadcasting receivers such as tuners, TVs with built-in satellite tuners, and recorders (broadcasted images may be distorted)
- Areas where hydrogen sulfide, ammonia, dust, or toxic gases are present

## Setup

### Part names and functions



- 1** LED unit
- 2** Ambient light sensor
- 3** Infrared sensor
- 4** **[••)B]**  
Used when registering the unit to the hub.
- 5** Safety wire
- 6** Mounting stand

### Confirming the status

You can use the LED to confirm the unit's status.

Indicator	Status
Off	No power, no motion detected, or unit is disabled*1
Lit	Motion detected
Blinking slowly	Registration mode
Blinking	Communication error, or the unit is out of range of the hub

- \*1 You can configure the unit so that its LED does not light when motion is detected. For more information, refer to the User's Guide (page 20).

### Setup overview

- 1 Initial setup**  
Make sure you can access the system using your mobile device. For details, refer to the System Setup Guide included with your hub.
- 2 Registration**  
Required only if the unit was purchased separately (i.e., not as part of a bundle).
- 3 Confirm the installation area**  
Read the information in this document to confirm that the desired installation area is suitable to proper operation.
- 4 Installation**  
Install the unit in the desired location.

## Inserting the batteries

- Use only D (LR20) alkaline batteries.
  - Do not use manganese, Ni-Cd, or Ni-MH batteries.
- 1 Remove the rear cover.
    - While holding the rear cover, twist the front of the unit in the direction shown below, and then remove the rear cover.
  - 2 Remove the battery cover.
    - Press the tabs on the top and bottom of the unit as shown, and then remove the battery cover.
  - 3 Insert the batteries.
    - Confirm the polarities ( $\oplus$ ,  $\ominus$ ).
  - 4 Attach the battery cover.
  - 5 Attach the rear cover.
    - While holding the rear cover, twist the front of the unit in the direction shown below.

## Setup

### Registering the unit

This procedure is not required for devices that were included as part of a bundle.

Before you can use the unit, it must be registered to the hub.

You can register the unit by using the registration buttons or the **[Home Network]** app.

#### Using registration buttons

- 1 Hub:**  
Press and hold **[••]C OTHER DEVICE]** until the LED indicator blinks slowly in green.
- 2 This unit:**  
Using an object with a thin tip, press and hold **[••]C]** until the LED blinks slowly (page 12).
  - When registration is complete, the hub sounds one long beep.

#### Note:

- To cancel without registering the unit, press **[••]C]** on the hub and on this unit again.
- If registration fails, the hub sounds several short beeps.

#### Using the app

When you register the unit by using the **[Home Network]** app, you can assign a name to your devices and group them by location. For more information, refer to the User's Guide (page 20).

### Confirming the installation area

Before deciding where to install the unit, carefully read the chapter "Installation Location", beginning on page 8, to confirm the installation location and direction.

## Installation

### Installation precautions

- Do not install the unit on a ceiling.
- Make sure you attach the safety wire to prevent the unit from falling.
- Do not use an impact driver. (This may lead to damaged screws or over-tightening.)
- Mount the unit on the stable location where the unit can be adequately supported when installing.
- Do not mount the unit on a soft material. It may fall down, break or cause injury.

## Wall material information

### Siding

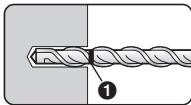
- Use the included wall mounting screws (page 3).
- If the weight of the unit is supported by the siding only, the siding could become damaged. Make sure you mount the unit in a location where the structure behind the siding can be used to support the weight of the unit. If this is not possible due to the thickness of the siding, use commercially-available screws that are  $\varnothing 4$  mm (5/32 inches) and longer than 25 mm (1 inch).
- Drill a pilot hole using a drill bit that is appropriate for the type of siding. Remove any debris after drilling the pilot hole. Do not drill the pilot hole into the structure behind the siding.

## Setup

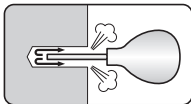
### Concrete

- Do not use the included screws. Use screw anchors (screw  $\varnothing$ : 4 mm (5/32 inches)) designed for concrete walls.
- Carefully read the instructions supplied with the anchors. Follow instructions regarding drill bit diameter, hole depth, etc.
- Drill a pilot hole. Remove any debris after drilling the pilot hole.

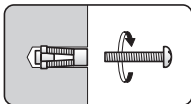
- 1 Mark the hole depth on the drill bit (1) and then drill a pilot hole.



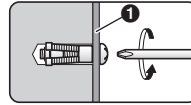
- 2 Remove debris.



- 3 Insert the anchor, tighten the screw, then remove the screw to secure the anchor.



- 4 Insert the screw through the mounting stand (1) and tighten it.



### ALC (autoclaved lightweight cellular concrete)

- Depending on the type of ALC panel, you may not be able to attach the unit. Consult the ALC panel manufacturer.
- Do not use the included screws. After consulting the manufacturer of the ALC panel, use only commercially-available metal screw anchors (screw  $\varnothing$ : 4 mm (5/32 inches)) designed for ALC panels.
- Carefully read the instructions supplied with the anchors. Follow instructions regarding drill bit diameter, hole depth, etc.
- Drill a pilot hole. Remove any debris after drilling the pilot hole.
- Seal the pilot hole with a commercially-available waterproof sealant.

### Other materials (mortar, tile, etc.)

- Do not use the included screws.
- Consult the builder or licensed professional regarding the type of anchor appropriate for the installation location and materials.
- Do not install on gypsum board or concrete blocks.

### **Installing the unit**

- 1** Attach the safety wire to the unit.
  - Place the ring of the safety wire (①) over the screw hole.
  - Place a washer (②) on top of the ring of the safety wire.
  - Tighten the screw (③) for the safety wire on top of the washer.

**Note:**

- Use the following template below when determining the location of the screw holes.

- 2** Attach the mounting stand to the outdoor wall.
  - Secure the stand to the wall by tightening 4 screws (①).

## Setup

---

- 3** Attach the unit to the stand using the stand attachment hole.
- Loosen the screw (③).
  - Insert the tip of the stand (②) into the stand attachment hole (①).
  - Secure the unit by tightening the screw (④).
- 
- 4** Adjust the unit angle.
- Loosen the screw (Ⓐ) and then adjust the unit to the desired angle.
  - Tighten the screw (Ⓐ) while holding the screw (Ⓑ) until the unit is secure.



- 5** Attach the safety wire to the wall.
- Place the ring of the safety wire (①) on the wall.
  - Place the washer (②) on top of the ring of the safety wire.
  - Tighten the screw (③) for the safety wire on top of the washer.



**Note:**

- Attach the safety wire while it is bent.
- Attach the safety wire high on the wall so that the unit does not strike anyone in the event the unit detaches from the wall.
- Do not hang from the unit or stand.

## Features available when using the [Home Network] app

Some of the unit's features that are available when using the **[Home Network]** app are listed below. For more information, refer to the User's Guide (page 20).

- **Sensor and light adjustment**  
You can adjust the unit's motion sensor sensitivity, change how long the LED lights when the sensor detects motion, adjust the LED brightness, and adjust other settings.
- **Sensor integration**  
You can configure the unit's sensor features to trigger other system events, such as camera recording\*1, turning on an electric device (such as a lamp), etc. (Appropriate device required.)  
\*1 A commercially-available microSD card must be inserted into the hub in order to record images.
- **Alarm system**  
You can use the app to arm and disarm the alarm system, confirm the current status of the unit's sensor, and view a log of previous events.
- **Notification**  
You can configure the system to send a notification to the **[Home Network]** app when the unit detects motion.

## Accessing the User's Guide

The User's Guide is a collection of online documentation that helps you get the most out of the **[Home Network]** app.

- 1 iPhone®/iPad®**  
Tap  in the app's home screen.
- Android™ devices**  
Tap  or press your mobile device's menu button in the app's home screen.
- 2 Tap [User's Guide].**

### Note:

- Microsoft® Windows® Internet Explorer® 8 and earlier versions are not supported.
- Android 4.1 or later versions are recommended.
- You can also access the User's Guide at the web page listed below.



[www.panasonic.net/pcc/support/tel/homenetwork/manual/](http://www.panasonic.net/pcc/support/tel/homenetwork/manual/)

## Specifications

- **Standards**  
DECT (Digital Enhanced Cordless Telecommunications)
- **Frequency range**  
DECT: 1.92 GHz – 1.93 GHz
- **Transmitting range**  
Approx. 50 m (160 feet) indoors  
Approx. 300 m (1,000 feet) outdoors
- **RF transmission power**  
DECT: 115 mW (max.)
- **Power source**  
D (LR20) alkaline battery (4 × 1.5 V)
- **Battery life**  
Up to 1 year (when the sensor is triggered 5 times a day and the LED lights for 20 seconds each time the sensor is triggered)
- **Illumination range**  
Approx. 67°
- **Maximum illumination**  
300 lumens
- **Sensor detection method**  
Pyroelectric infrared sensor (heat sensor)
- **Sensor detection range**  
(when the surrounding temperature is approx. 25 °C (77 °F))  
Horizontal: approx. ±120°  
Vertical: approx. ±58°  
Distance: approx. 3 m (9.8 feet)
- **Adjustable mounting angles**  
Horizontal: ±180°  
Vertical: 90°  
(adjustable when mounting)
- **Operating conditions**  
-20 °C – 50 °C (-4 °F – 122 °F)
- **IP rating**  
IP55\*1
- **Dimensions (height × width × depth)**  
95 mm × 95 mm × 100 mm  
(3.74 inches × 3.74 inches × 3.93 inches)
- **Mass (weight)**

Approx. xx g (xx lb), excluding the batteries

- \*1 Water resistance is only assured if the unit is installed correctly according to the instructions in the Installation Guide, and appropriate water protection measures are taken.

## Appendix

### FCC and other information

This device complies with Part 15 of the FCC Rules. Operation is subject to the following two conditions:

(1) This device may not cause harmful interference, and (2) this device must accept any interference received, including interference that may cause undesired operation.

Privacy of communications may not be ensured when using this device.

#### CAUTION:

Any changes or modifications not expressly approved by the party responsible for compliance could void the user's authority to operate this device.

#### NOTE:

This equipment has been tested and found to comply with the limits for a Class B digital device, pursuant to Part 15 of the FCC Rules. These limits are designed to provide reasonable protection against harmful interference in a residential installation. This equipment generates, uses, and can radiate radio frequency energy and, if not installed and used in accordance with the instructions, may cause harmful interference to radio communications. However, there is no guarantee that interference will not occur in a particular installation. If this equipment does cause harmful interference to radio or television reception, which can be determined by turning the equipment off and on, the user is encouraged to try to correct the interference by one or more of the following measures:

- Reorient or relocate the receiving antenna.

- Increase the separation between the equipment and receiver.
- Connect the equipment into an outlet on a circuit different from that to which the receiver is connected.
- Consult the dealer or an experienced radio/TV technician for help.

Some devices operate at frequencies that may cause interference to nearby TVs and VCRs. To minimize or prevent such interference, this device should not be placed near or on top of a TV or VCR. If interference is experienced, move this device further away from the TV or VCR. This will often reduce or eliminate interference.

#### FCC RF Exposure Warning:

- This product complies with FCC radiation exposure limits set forth for an uncontrolled environment.
- To comply with FCC RF exposure requirements, the device must be installed and operated 20 cm (8 inches) or more between the product and all person's body.
- This product may not be collocated or operated in conjunction with any other antenna or transmitter.
- For body-worn operation, the device must be used only with a non-metallic accessory. Use of other accessories may not ensure compliance with FCC RF exposure requirements.

#### Notice:

- FCC ID can be found on the rear of the unit.

Customer services

**Shop**  
**Accessories!**

for all your Panasonic gear

Go to

<http://shop.panasonic.com/support>

Get everything you need to get the most out of  
your Panasonic products

Accessories & Parts for your Camera, Phone, A/V  
products, TV, Computers & Networking, Personal  
Care, Home Appliances, Headphones, Batteries,  
Backup Chargers & more...

**Customer Services Directory**

For Product Information, Operating Assistance,  
Parts, Owner's Manuals, Dealer and Service info  
go to <http://shop.panasonic.com/support>

You may also contact us directly at: 1-800-272-7033,

Monday - Friday 9 am to 9 pm;

Saturday - Sunday 10 am to 7 pm, EST.

For the hearing or speech impaired TTY: 1- 877-833-8855

As of June 2015

## Appendix

# Limited Warranty (ONLY FOR U.S.A.)

## Panasonic Products Limited Warranty

### Limited Warranty Coverage (For USA Only)

If your product does not work properly because of a defect in materials or workmanship, Panasonic Corporation of North America (referred to as "the warrantor") will, for the length of the period indicated on the chart below, which starts with the date of original purchase ("warranty period"), at its option either (a) repair your product with new or refurbished parts, (b) replace it with a new or a refurbished equivalent value product, or (c) refund your purchase price. The decision to repair, replace or refund will be made by the warrantor.

Product or Part Name	Parts	Labor
Home Network System Products	One (1) Year	One (1) Year
microSD card (Included model only)	90 days	N/A

During the "Labor" warranty period there will be no charge for labor. During the "Parts" warranty period, there will be no charge for parts. This Limited Warranty excludes both parts and labor for non-rechargeable batteries, antennas, and cosmetic parts (cabinet). This warranty only applies to products purchased and serviced in the United States. This warranty is extended only to the original purchaser of a new product which was not sold "as is".

### Mail-In Service--Online Repair Request

#### Online Repair Request

To submit a new repair request and for quick repair status visit our Web Site at <http://shop.panasonic.com/support>

When shipping the unit, carefully pack, include all supplied accessories listed in the Owner's Manual, and send it prepaid, adequately insured and packed well in a carton box. When shipping Lithium Ion batteries please visit our Web Site at <http://shop.panasonic.com/support> as Panasonic is committed to providing the most up to date information. Include a letter detailing the complaint, a return address and provide a daytime phone number where you can be reached. A valid registered receipt is required under the Limited Warranty.

**IF REPAIR IS NEEDED DURING THE WARRANTY PERIOD, THE PURCHASER WILL BE REQUIRED TO FURNISH A SALES RECEIPT/PROOF OF PURCHASE INDICATING DATE OF PURCHASE, AMOUNT PAID AND PLACE OF PURCHASE. CUSTOMER WILL BE CHARGED FOR THE REPAIR OF ANY UNIT RECEIVED WITHOUT SUCH PROOF OF PURCHASE.**

**Limited Warranty Limits and Exclusions**

This warranty ONLY COVERS failures due to defects in materials or workmanship, and DOES NOT COVER normal wear and tear or cosmetic damage. The warranty ALSO DOES NOT COVER damages which occurred in shipment, or failures which are caused by products not supplied by the warrantor, or failures which result from accidents, misuse, abuse, neglect, mishandling, misapplication, alteration, faulty installation, set-up adjustments, misadjustment of consumer controls, improper maintenance, power line surge, lightning damage, modification, introduction of sand, humidity or liquids, commercial use such as hotel, office, restaurant, or other business or rental use of the product, or service by anyone other than a Factory Service Center or other Authorized Servicer, or damage that is attributable to acts of God.

**THERE ARE NO EXPRESS WARRANTIES EXCEPT AS LISTED UNDER "LIMITED WARRANTY COVERAGE".**

**THE WARRANTOR IS NOT LIABLE FOR INCIDENTAL OR CONSEQUENTIAL DAMAGES RESULTING FROM THE USE OF THIS PRODUCT, OR ARISING OUT OF ANY BREACH OF THIS WARRANTY.**

(As examples, this excludes damages for lost time, travel to and from the servicer, loss of or damage to media or images, data or other memory or recorded content. The items listed are not exclusive, but for illustration only.)

**ALL EXPRESS AND IMPLIED WARRANTIES, INCLUDING THE WARRANTY OF MERCHANTABILITY, ARE LIMITED TO THE PERIOD OF THE LIMITED WARRANTY.**

Some states do not allow the exclusion or limitation of incidental or consequential damages, or limitations on how long an implied warranty lasts, so the exclusions may not apply to you. This warranty gives you specific legal rights and you may also have other rights which vary from state to state. If a problem with this product develops during or after the warranty period, you may contact your dealer or Service Center. If the problem is not handled to your satisfaction, then write to:

Consumer Affairs Department  
Panasonic Corporation of North America  
661 Independence Pkwy  
Chesapeake, VA 23320

**PARTS AND SERVICE, WHICH ARE NOT COVERED BY THIS LIMITED WARRANTY, ARE YOUR RESPONSIBILITY.**

As of June 2015

# IMPORTANT!

If your product is not working properly. . .

- ① **Use alkaline batteries.**  
(Rechargeable Ni-MH batteries CANNOT be used.)
- ② Use the **Home Network app** to access the **User's Guide** and refer to the **Troubleshooting** section.



Visit our Web site: <http://shop.panasonic.com/support>  
• FAQ and troubleshooting hints are available.

## For your future reference

We recommend keeping a record of the following information to assist with any repair under warranty.

Serial No.	Date of purchase
(found on the rear of the unit)	
Name and address of dealer	

Attach your purchase receipt here.

Panasonic Corporation of North America  
Two Riverfront Plaza, Newark, NJ 07102-5490

© Panasonic System Networks Co., Ltd. 2014