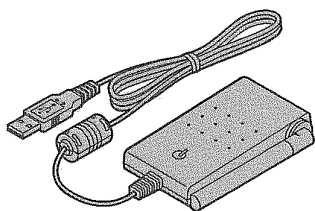


Panasonic®



Operating Instructions

5.8 GHz USB Adaptor

Model No. **KX-TGA575**

This unit is an accessory unit for use with the Panasonic cordless telephone KX-TG5761/KX-TG5766/KX-TG5771/KX-TG5776. You must register this unit with your base unit and install the Skype software to your computer before it can be used.

What is Skype?

Skype is a little program for making free calls over the Internet to anyone else who also has Skype. It is free and easy to download and use, and works with most computers. You can get the Skype software and detailed information from the following website: <http://www.skype.com/>

Important:

- Installation, configuration, and operation explanations for Skype software are not included in these operating instructions. For more information, refer to the online manual for Skype software.
- The Skype software is to be used at one's own risk. Panasonic cannot accept any liability or warranty for this program.

Please read these Operating Instructions before using the unit and save for future reference.

For assistance, visit our website:

<http://www.panasonic.com/phonehelp> for customers in the U.S.A. or Puerto Rico.

Table of Contents

Introduction

Feature highlights	3
Accessory information	3
For best performance	4

Preparation

Controls	5
Symbols and screen shots used in these operating instructions	5
System requirements for your computer	6
Connecting to a computer	6
Installing and setting up the USB Adaptor Utility	8
Confirming the USB adaptor works properly	9
Soft key and display menus	10
Deregistering the USB adaptor	10
Uninstalling the USB Adaptor Utility	10

Using the USB Adaptor

Entering the IP phone mode	11
Making internet calls	11
Answering internet calls	13
Useful features during an internet call	14
Using the Call list	14
Selecting the IP ringer tone	15

Useful Information

Troubleshooting	16
FCC and other information	18
Specifications	20
Warranty	21
Customer services	23

Introduction

Thank you for purchasing the Panasonic 5.8 GHz USB Adaptor.

We recommend keeping a record of the following information for future reference.

Serial No. _____ Date of purchase _____
(found on the bottom of the unit)

Name and address of dealer _____

Attach your purchase receipt here.

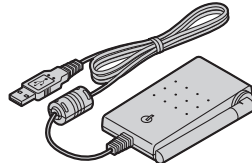
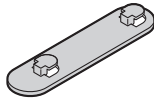
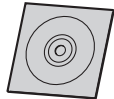
Feature highlights

Internet telephony

By connecting the USB adaptor to your computer installed with Skype software and USB Adaptor Utility, you can make and answer internet telephone calls using the cordless handset of your GIGARANGE® cordless telephone. If you do not have the Skype software, download it from the Skype homepage: <http://www.skype.com/>

Accessory information

Included parts

<input type="checkbox"/> USB adaptor 	<input type="checkbox"/> Wall mounting adaptor  Order No. PQKL10079Z1	<input type="checkbox"/> CD-ROM  Order No. PJKJGTGA575Z
---	--	--

Sales and support information

- To order these accessories, call 1-800-332-5368.
- TTY users (hearing or speech impaired users) can call 1-866-605-1277.

Introduction

For best performance

Location

This unit communicates using radio waves.

For maximum distance and noise-free operation, we recommend the following:

- Placing the product away from electrical appliances.
- Raising the antenna vertically.

Environment

- Keep the product away from electrical noise generating devices, such as fluorescent lamps and motors.
- The product should be kept free from excessive smoke, dust, high temperature, and vibration.
- The product should not be exposed to direct sunlight.
- Do not place heavy objects on top of the product.
- When you leave the product unused for a long period of time, disconnect the product from the computer.
- The product should be kept away from heat sources such as heaters, kitchen stoves, etc. It should not be placed in rooms where the temperature is less than 5 °C (41 °F) or greater than 40 °C (104 °F). Damp basements should also be avoided.
- The maximum data transferring distance may be shortened when the product is used in the following

places: Near obstacles such as hills, tunnels, underground, near metal objects such as wire fences, etc.

- Operating near 5.8 GHz electrical appliances may cause interference. Move away from the electrical appliances.

Connections

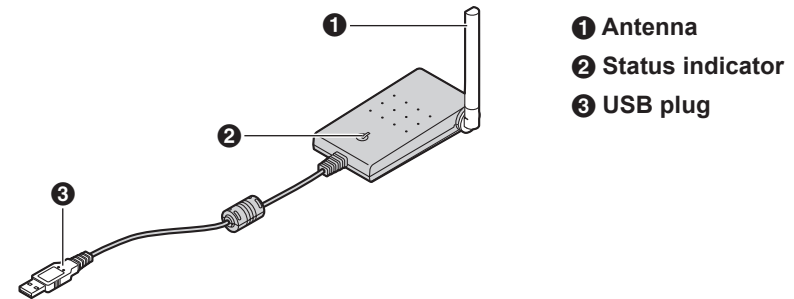
- Connect the USB adaptor to a USB port on your computer. For optimum performance, do not connect more than one USB adaptor to a single computer or the USB adaptor to your computer via a hub.
- The USB adaptor may not turn off and may consume electricity regardless of whether your computer is turned off or in sleep mode. By connecting/disconnecting the USB adaptor from an active computer, the USB adaptor will turn on/off. We recommend when you are not using the USB adaptor or computer, that you disconnect the USB adaptor from your computer.

Routine care

- Wipe the outer surface of the product with a soft moist cloth. Do not use benzine, thinner, or any abrasive powder.

Preparation

Controls



- ① Antenna
- ② Status indicator
- ③ USB plug

Status indicator

The status indicator indicates the USB adaptor status.

Indicator	Status
Light on	Adaptor is on. (Receiving power)
Light off	Adaptor is off. (Not receiving power)
Flashing	Transmission between the adaptor and base unit is not established.

Symbols and screen shots used in these operating instructions

Symbols used for operations

Symbol	Meaning
Example: "Contacts"	Press [▲] or [▼] to select the words in quotations shown on the display.
Example: [MENU]	The words in the brackets indicate button names including soft key names on your handset and base unit.
Example: [OK]	The words in the brackets indicate button names on your computer.
→	Proceed to the next operation.

Preparation

Screen shots used for operations

- The screen shots in these instructions are for Microsoft® Windows® XP and are included for reference only.
- The screen shots in these instructions may differ slightly from the screen shown on your computer.

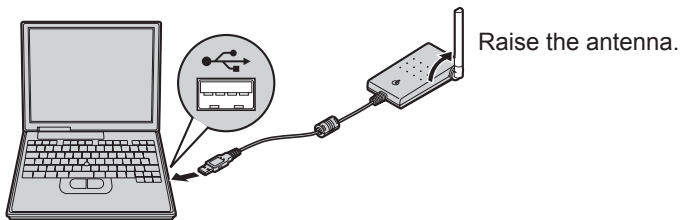
System requirements for your computer

The following system requirements must be met in order to use the USB Adaptor Utility.

Item	Description
Operating System	Microsoft Windows 2000 or Microsoft Windows XP
CPU	Pentium® 1 GHz or faster
RAM	256 MB
HDD	50 MB available disk space
Resolution	800 x 600 or higher resolution display
Others	USB interface (1.1) CD-ROM drive Panasonic cordless telephone KX-TG5761/KX-TG5766/ KX-TG5771/KX-TG5776 Skype software Internet connection: Broadband, e.g. DSL

Connecting to a computer

Connect the USB adaptor to the USB port of your computer.



- The USB adaptor receives power from the USB port.

Preparation

Wall mounting

The USB adaptor can be mounted on the flat surface such as a wall by using the wall mounting adaptor.

Note:

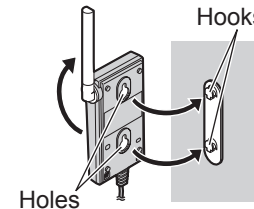
- For USB adaptor location information, see page 4.

- 1 Peel off the protection sheet and attach the wall mounting adaptor to the flat surface firmly.



Protection sheet

- 2 Insert the hooks on the wall mounting adaptor into the holes on the USB adaptor and slide the adaptor down until it is secure.

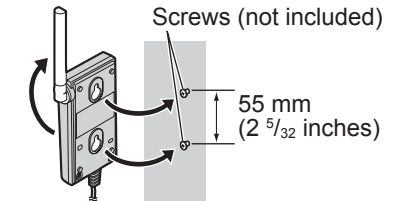


Holes

Hooks

Mounting without the wall mounting adaptor

Drive the screws (not included) into the flat surface such as a wall using the wall mount template as a guide, then mount the USB adaptor securely on the screws.



Wall mount template

55 mm
(2 ⁵/₃₂ inches)

Preparation

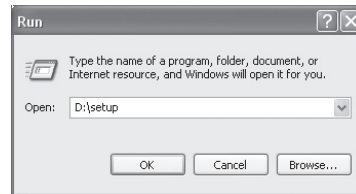
Installing and setting up the USB Adaptor Utility

Before you use the USB adaptor, you must install the USB Adaptor Utility from the included CD-ROM, and register the USB adaptor to the base unit.

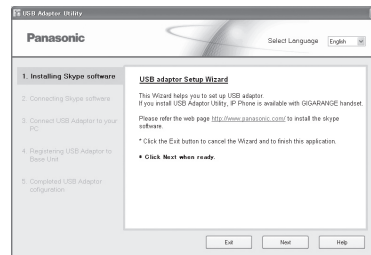
The USB adaptor is registered as an extension device of the base unit.

- 1 Start Windows and exit all other applications.
 - You must be logged in as an administrator in order to install the USB Adaptor Utility.
- 2 Connect the USB adaptor to your computer (page 6).
- 3 Insert the included CD-ROM into your CD-ROM drive.
- 4 After the installer has started, follow the on-screen instructions until all files have been installed.

- If the installer does not start automatically:
Click **[Start]**, then choose **[Run...]**. Type "D:\setup" (where "D:" is the drive letter of your CD-ROM drive). Click **[OK]**. (If you are not sure what the drive letter is for your CD-ROM drive, use Windows Explorer and look for the CD-ROM drive.)



- 5 When installation is complete, the USB adaptor setup window is opened. Remove the included CD-ROM from your CD-ROM drive.

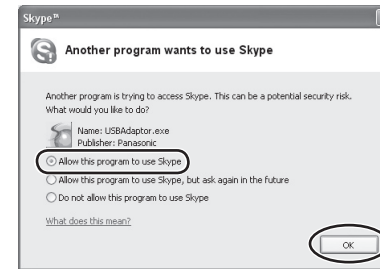


- 6 Follow the on-screen instructions to set up the USB adaptor.
 - When the setting up is complete, you are ready to use the internet telephony.


Preparation

Note:

- If the Skype software is not installed to your computer, the on-screen instruction guides you to download and install the Skype software.
- If the following window appears, check **[Allow this program to use Skype]**, then click **[OK]**.



Confirming the USB adaptor works properly

Click the USB Adaptor Utility icon () in the system tray.

The setup program starts checking the configuration of the USB adaptor. If the setup program finds errors in the configuration, follow the on-screen instructions. When the configuration is complete, you are ready to use the internet telephony.

Note:

- Color of the USB Adaptor Utility icon in the system tray indicates the status of the USB adaptor configuration.

Color	Status
Blue	Internet telephony is available.
Gray	Internet telephony is not available. (Refer to "Troubleshooting" on page 16 or click [Help] to view "Troubleshooting" on your web browser.)

- If the USB Adaptor Utility icon does not appear, refer to the troubleshooting section (page 16).

To quit the USB Adaptor Utility

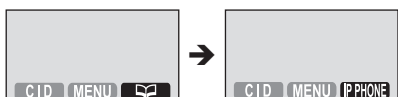
Right-click the USB Adaptor Utility icon in the system tray, then select **[Exit]**.

- To restart the USB Adaptor Utility, click **[Start]**, then select **[All Programs] – [Panasonic] – [KX-TGA575] – [USB Adaptor (KX-TGA575)]**.
(For Windows 2000, click **[Programs]** instead of **[All Programs]**.)

Preparation

Soft key and display menus

After setting up the USB adaptor, **[PHONEBOOK]** (Phonebook) on the right soft key on the handset is changed to **[IP PHONE]**.



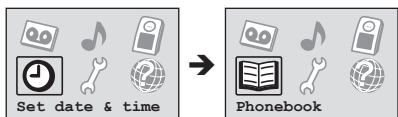
To enter the phonebook, press **[MENU]** (middle soft key) then select "Phonebook".

Display menus of KX-TGA571 *1 (1.5 inch color display handset)

After setting up the USB adaptor, the display menus will be changed as follows:

- "Set date & time" is replaced with "Phonebook".
- "Set date & time" moves to the sub-menu of "Initial setting".


(Example: Registered to KX-TG5776)



*1 KX-TGA571 is the same handset supplied with the KX-TG5766/ KX-TG5776.

Deregistering the USB adaptor

You can cancel a registered USB adaptor.

Right-click the USB Adaptor Utility icon () in the system tray, then select **[Option]** – **[Deregistration]**.

Uninstalling the USB Adaptor Utility

■ For Windows XP users:

- 1 Click **[Start]**, then click **[Control Panel]**.
- 2 Click **[Add or Remove Programs]**.
- 3 Select **[USB Adaptor (KX-TGA575)]** from the list.
- 4 Click **[Remove]**, then follow the on-screen instructions.

■ For Windows 2000 users:

- 1 Click **[Start]**, point to **[Settings]**, then click **[Control Panel]**.
- 2 Double-click **[Add/Remove Programs]**.
- 3 Select **[USB Adaptor (KX-TGA575)]** from the list.
- 4 Click **[Add/Remove...]** or **[Change/Remove...]**, then follow the on-screen instructions.

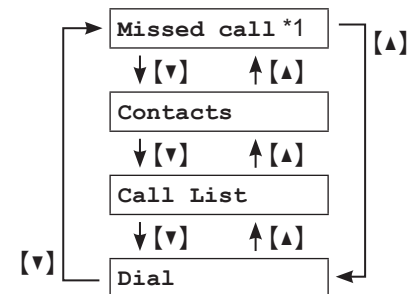
Using the USB Adaptor

Entering the IP phone mode

Press **[IP PHONE]** (right soft key) to enter the IP phone mode.

● **[IPPHONE]** appears on the handset display.

The IP phone mode consists of the following menus:



*1: This menu will appear only when internet calls are not answered.

To exit the IP phone mode, press **[OFF]**.

Important:

● Do not change any Skype settings while the handset is in the IP phone mode. If you have changed the settings, quit the USB Adaptor Utility and restart it (page 9).

Making internet calls









Calling from the Contact list

You can make an internet call by selecting a Skype name from the Skype Contact list.

You must add Skype names in the Contact list beforehand by using your computer.

- 1 **[IP PHONE]** (right soft key) → "Contacts" → **[SELECT]**
- 2 Press **[^]** or **[v]** to select the desired Skype name.

● Skype name and its current status icon is displayed.

Icon	Status
	Online
	Offline
	Skype Me™
	Away
	Do Not Disturb
	Voicemail
	SkypeOut™
	Not Available

● You can search the desired Skype name by pressing the dialing button that corresponding to the first letter.

- 3 **[CALL]**

Using the USB Adaptor

- When you finish talking, press **[OFF]** or place the handset on the base unit or charger.

Note:

- You cannot select items from the handset phonebook, redial list and caller list.

Using the speakerphone

- During a conversation, press **[☎]** to turn on the speakerphone.

- Speak alternately with the other party.

- When you finish talking, press **[OFF]**.

Note:

- Use the speakerphone in a quiet environment.
- To switch back to the receiver, press **[📞]**.

Adjusting the receiver/speaker volume

Press **[▲]** or **[▼]** repeatedly while talking.

Making regular phone calls (SkypeOut)

SkypeOut is a way to make calls from Skype to persons who use telephone lines or mobile phones. Making SkypeOut calls is not free of charge. Before using the SkypeOut, purchase the Skype credit by selecting **[Go to My Account Page]** from **[Tools]** on the menu bar of the Skype window on your computer.

For more information about SkypeOut, see the Skype website (<http://www.skype.com/>).

- [IP PHONE]** (right soft key) → “Dial” → **[SELECT]**

- Enter the phone number in the following way (even for local calls):
“country code”+“area code”+
“local phone number”

Example (using the country code “1” for calling USA):

1 555 321 5555

- In case of some countries, delete “0” at the first digit of the area code.
- To correct a digit, press **[CLEAR]**.

- [📞]/[CALL]**

- When you finish talking, press **[OFF]** or place the handset on the base unit or charger.

Using the USB Adaptor

Answering internet calls

If you receive an internet call, you will hear an IP ringer tone from the handset and **[IP PHONE]** will flash on the handset display.

- Lift the handset and press **[📞]** or **[☎]**.

- You can also answer the call by pressing any button except **[▲]**, **[▼]**, **[←]**, **[→]**, or **[OFF]**. (Any key talk feature)

- When you finish talking, press **[OFF]** or place the handset on the base unit or charger.

Note:

- You can change the IP ringer tone (page 15).
- When an internet call is received, the base unit does not ring and you cannot answer it by using the base unit.
- When an internet call is received while you are in the “Do Not Disturb” mode of the online status, the handset does not ring.
- Caller ID feature does not work for internet calls.

Auto talk

This feature allows you to answer a call by simply lifting the handset off the base unit or charger. You do not need to press **[📞]**. To activate this feature, see the operating instructions included with the base unit.

Temporary ringer off

While the handset is ringing for an internet call, you can turn the ringer off temporarily by pressing **[📞]** or **[OFF]**.

Missed calls

If an internet call is not answered, “IP missed call” is shown on the handset display. To see who called while you were out:

- [IP PHONE]** (right soft key) → “Missed call” → **[SELECT]**

- Press **[▼]** to view from the most recent missed call, or **[▲]** to view from the oldest missed call.

- To call the displayed item, press **[📞]** or **[CALL]**.
- To play the displayed Voicemail message, press **[PLAY]**.

Note:

- Once you have viewed a missed call, it will not be displayed the next time you enter the missed call list.

Answering another internet call

This feature allows you to receive or reject another internet call while you are already talking on the phone. If you receive an internet call while on the phone, you will hear an IP ringer tone.

Press **[IP PHONE]** to end the first call and answer the 2nd call.

- To reject the 2nd call, press **[REFUSE]**.

Useful features during an internet call

HOLD button

This feature allows you to put an internet call on hold. Press **[HOLD]** during an internet call.

- To release the hold, press **[↶]**.

Mute

While mute is turned on, you can hear the other party, but the other party cannot hear you.

To mute your voice, press **[MUTE]**.

- To return to the conversation, press **[MUTE]**.

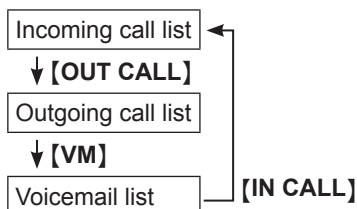
Using the Call list

Call information of incoming and outgoing internet calls is logged in the Skype Call list by the most recent internet call to the oldest. If you receive the Skype Voicemail, it will be recorded in the Call list along with call information. You can view the Call list by using the handset, and you can call or play the Voicemail by selecting the item in the list.

1 [IP PHONE] (right soft key) → "Call List" → **[SELECT]**

2 Press **[▼]** to search in the incoming call list from the most recent call, or **[▲]** to search from the oldest call.

- You can change the list by pressing the right soft key as follows;



3 To call to the displayed item, press **[↶]** or **[CALL]**.

To play the displayed Voicemail message, press **[PLAY]**.

4 When you finish talking or playing, press **[OFF]** or place the handset on the base unit or charger.

Selecting the IP ringer tone

You can change the IP ringer tone heard when an internet call is received. The default setting is "Tone 2".

1 [MENU] (middle soft key) → **[#][1][6][9]**

2 Select the desired item. → **[SELECT]**



Tone & Melody	Pre-installed tone and melodies
Custom ring	Songs you stored in the handset

3 Select the desired ringer tone. → **[SAVE]** → **[OFF]**

Note:

- You cannot edit or erase call information or Voicemail in the list by using the handset.

Troubleshooting

Problem	Cause & solution
The USB adaptor does not work. (The USB Adaptor Utility icon () is indicated in gray.)	<ul style="list-style-type: none"> ● Make sure the USB plug is connected properly to your computer. ● The USB adaptor may not work properly depending on the power supply of your computer's USB port. If this is the case and your computer has multiple USB ports, we recommend that you try other USB ports. ● The USB adaptor is too far from the base unit. Move closer to the base unit. ● Skype software is not activated. Start the software. ● Your base unit is turned off. Confirm the connection. ● The registration may be canceled from the base unit. Set up and register the USB adaptor to the base unit again ("Confirming the USB adaptor works properly" on page 9). ● If you are still having problems, uninstall the USB Adaptor Utility (page 10) then reinstall it (page 8).
The USB Adaptor Utility does not start when my computer is started up. (The USB Adaptor Utility icon () does not appear in the system tray.)	<ul style="list-style-type: none"> ● Start the Utility manually. Click [Start], then select [All Programs] – [Panasonic] – [KX-TGA575] – [USB Adaptor (KX-TGA575)]. (For Windows 2000, click [Programs] instead of [All Programs].) ● After you have started the USB Adaptor Utility, you can enable the Auto Startup feature to make sure the USB Adaptor Utility starts each time your computer is started up. To enable Auto Startup, right-click on the USB Adaptor Utility icon in the system tray and insert a check mark next to [Auto Startup].

Problem	Cause & solution
I cannot read the language displayed by the USB Adaptor Utility.	<ul style="list-style-type: none"> ● You can change the application's display language to English, French, or Spanish. Select the desired language from the pull-down menu on the upper right of the USB adapter setup window.
I cannot make an internet call.	<ul style="list-style-type: none"> ● While another handset user is making an outside call, you cannot make an internet call. Try again later.
I cannot receive internet calls.	<ul style="list-style-type: none"> ● While other handset users are making a conference call, you cannot receive internet calls. ● While the cordless camera is in use, you cannot receive internet calls.
I cannot register the USB adaptor.	<ul style="list-style-type: none"> ● 8 handsets or devices have already been registered to the base unit. A previously deregistered extension number is still retained in the base unit. To register the USB adaptor, erase the unnecessary extension number by using the base unit.

- For other troubleshooting, refer to the base unit's operating instructions or visit: <http://panasonic.co.jp/pcc/cs/en/telecom/tel/download.htm>.

Useful Information

FCC and other information

This device complies with Part 15 of the FCC Rules. Operation is subject to the following two conditions:

(1) This device may not cause harmful interference, and (2) this device must accept any interference received, including interference that may cause undesired operation.

CAUTION:

Any changes or modifications not expressly approved by the party responsible for compliance could void the user's authority to operate this device.

NOTE:

This equipment has been tested and found to comply with the limits for a Class B digital device, pursuant to Part 15 of the FCC Rules. These limits are designed to provide reasonable protection against harmful interference in a residential installation. This equipment generates, uses, and can radiate radio frequency energy and, if not installed and used in accordance with the instructions, may cause harmful interference to radio communications. However, there is no guarantee that interference will not occur in a particular installation. If this equipment does cause harmful interference to radio or television reception, which can be determined

by turning the equipment off and on, the user is encouraged to try to correct the interference by one or more of the following measures:

- Reorient or relocate the receiving antenna.
- Increase the separation between the equipment and receiver.
- Connect the equipment into an outlet on a circuit different from that to which the receiver is connected.
- Consult the dealer or an experienced radio/TV technician for help.

FCC RF Exposure Warning:

The product complies with FCC radiation exposure limits set forth for an uncontrolled environment. To comply with FCC RF exposure requirements, the product must be installed and operated with its antenna located 20 cm (8 inches) or more away from all person's body (excluding extremities of hands, wrist and feet). The product must not be collocated or operated in conjunction with any other antenna or transmitter.

Responsible party:

Panasonic Corporation of North America
One Panasonic Way, Secaucus,
New Jersey 07094
Phone number: 1-800-211-PANA
(1-800-211-7262)

Useful Information

Medical

- Consult the manufacturer of any personal medical devices, such as pacemakers or hearing aids, to determine if they are adequately shielded from external RF (radio frequency) energy. (The product operates in the frequency range of 5.76 GHz to 5.84 GHz, and the power output is 200 mW (max.)) Do not use the product in health care facilities if any regulations posted in the area instruct you not to do so. Hospitals or health care facilities may be using equipment that could be sensitive to external RF energy.

Notice

- This product is designed for use in the United States of America. Sales or use of this product in other countries may violate local laws.
- Cet appareil est conçu pour être utilisé aux États-Unis d'Amérique. La vente ou l'emploi de cet appareil dans certains autres pays peut constituer une infraction à la législation locale.
- Este producto está diseñado para usarse en los Estados Unidos de América. La venta o el empleo de este producto en ciertos países puede constituir violación de la legislación local.
- この製品は、日本国外での使用を目的として設計されており、日本国内での使用は法律違反となります。従って、当社では日本国内においては原則として修理などのサービスは致しかねます。

Specifications

Operating environment	5 °C – 40 °C (41 °F – 104 °F)
Frequency	5.76 GHz – 5.84 GHz
Dimensions	Approx. height 21 mm x width 57 mm x depth 110 mm (²⁷ / ₃₂ inch x 2 ¹ / ₄ inches x 4 ¹¹ / ₃₂ inches)
Mass (Weight)	Approx. 120 g (0.265 lb.)
Power consumption	Standby: Approx. 0.5 W Maximum: Approx. 1.0 W
Power output	200 mW (max.)
Power supply	5 V DC (USB powered)
Interface	USB: 1.1

Note:

- Design and specifications are subject to change without notice.
- The illustrations in these instructions may vary slightly from the actual product.
- Software features and appearance are subject to change without notice.

Trademarks

- Microsoft and Windows are either registered trademarks or trademarks of Microsoft Corporation in the United States and/or other countries.
- Pentium is a trademark or registered trademark of Intel Corporation or its subsidiaries in the United States and other countries.
- Microsoft product screen shots reprinted with permission from Microsoft Corporation.
- Skype, SkypeOut and Skype Me are either registered trademarks or trademarks of Skype Limited or other related companies in the United States and/or other countries.
- All other trademarks identified herein are the property of their respective owners.

Warranty

PANASONIC CONSUMER ELECTRONICS COMPANY, DIVISION OF PANASONIC CORPORATION OF NORTH AMERICA
 One Panasonic Way,
 Secaucus, New Jersey 07094

PANASONIC PUERTO RICO, INC.
 San Gabriel Industrial Park,
 Ave. 65 de Infantería, Km. 9.5,
 Carolina, Puerto Rico 00985

Panasonic Telephone Products Limited Warranty

Limited Warranty Coverage

If your product does not work properly because of a defect in materials or workmanship, Panasonic Consumer Electronics Company or Panasonic Puerto Rico, Inc. (collectively referred to as “the warrantor”) will, for the length of the period indicated on the chart below, which starts with the date of original purchase (“Limited Warranty period”), at its option either (a) repair your product with new or refurbished parts, or (b) replace it with a new or a refurbished product. The decision to repair or replace will be made by the warrantor.

Parts	Labor
One (1) Year	One (1) Year

During the “Labor” Limited Warranty period there will be no charge for labor. During the “Parts” Limited Warranty period, there will be no charge for parts. You must mail-in your product prepaid during the Limited Warranty period. This Limited Warranty excludes both parts and labor for batteries, antennas, and cosmetic parts (cabinet). This Limited Warranty only applies to products purchased and serviced in the United States or Puerto Rico. This Limited Warranty is extended only to the original purchaser and only covers products purchased as new.

Mail-In Service

For assistance in the continental U.S.A. in obtaining repairs please ship the product prepaid to:

Panasonic Services Company Customer Servicerter
4900 George McVay Drive Suite B Door #12 McAllen, TX 78503

For assistance in Puerto Rico call Panasonic Puerto Rico, Inc. (787)-750-4300 or fax (787)-768-2910.

For Limited Warranty service for headsets if a headset is included with this product please call Panasonic Call Center at 1-800-211-PANA (1-800-211-7262).

When shipping the unit carefully pack, include all accessories, and send it prepaid, adequately insured and preferably in the original carton. Include a letter detailing the complaint and provide a day time phone number where you can be reached.

Useful Information

IF REPAIR IS NEEDED DURING THE LIMITED WARRANTY PERIOD THE PURCHASER WILL BE REQUIRED TO FURNISH A SALES RECEIPT/PROOF OF PURCHASE INDICATING DATE OF PURCHASE, AMOUNT PAID AND PLACE OF PURCHASE. CUSTOMER WILL BE CHARGED FOR THE REPAIR OF ANY UNIT RECEIVED WITHOUT SUCH PROOF OF PURCHASE.

Limited Warranty Limits And Exclusions

This Limited Warranty ONLY COVERS failures due to defects in materials or workmanship, and DOES NOT COVER normal wear and tear or cosmetic damage. The Limited Warranty ALSO DOES NOT COVER damages which occurred in shipment, or failures which are caused by products not supplied by the warrantor, or failures which result from accidents, misuse, abuse, neglect, bug infestation, mishandling, misapplication, alteration, faulty installation, set-up adjustments, misadjustment of consumer controls, improper maintenance, power line surge, lightning damage, modification, introduction of sand, humidity or liquids, commercial use such as hotel, office, restaurant, or other business or rental use of the product, or service by anyone other than a Factory Servicer or other Authorized Servicer, or damage that is attributable to acts of God.

THERE ARE NO EXPRESS WARRANTIES EXCEPT AS LISTED UNDER "LIMITED WARRANTY COVERAGE". THE WARRANTOR IS NOT LIABLE FOR INCIDENTAL OR CONSEQUENTIAL DAMAGES RESULTING FROM THE USE OF THIS PRODUCT, OR ARISING OUT OF ANY BREACH OF THIS LIMITED WARRANTY. (As examples, this excludes damages for lost time, lost calls or messages, cost of having someone remove or re-install an installed unit if applicable, travel to and from the servicer. The items listed are not exclusive, but are for illustration only.) **ALL EXPRESS AND IMPLIED WARRANTIES, INCLUDING THE WARRANTY OF MERCHANTABILITY, ARE LIMITED TO THE PERIOD OF THE LIMITED WARRANTY.**

Some states do not allow the exclusion or limitation of incidental or consequential damages, or limitations on how long an implied warranty lasts, so the exclusions may not apply to you.

This Limited Warranty gives you specific legal rights and you may also have other rights which vary from state to state. If a problem with this product develops during or after the Limited Warranty period, you may contact your dealer or Servicer. If the problem is not handled to your satisfaction, then write to the warrantor's Consumer Affairs Department at the addresses listed for the warrantor.

PARTS AND SERVICE, WHICH ARE NOT COVERED BY THIS LIMITED WARRANTY, ARE YOUR RESPONSIBILITY.

22 For assistance, please visit <http://www.panasonic.com/phonehelp>

Useful Information

Customer services

Customer Services Directory

Obtain Product Information and Operating Assistance; locate your nearest Dealer or Servicer; purchase Parts and Accessories; or make Customer Service and Literature requests by visiting our Web Site at:

<http://www.panasonic.com/consumersupport>

or, contact us via the web at:

<http://www.panasonic.com/contactinfo>

You may also contact us directly at:

1-800-211-PANA (1-800-211-7262),

Monday-Friday 9 am-9 pm; Saturday-Sunday 10 am-7 pm, EST.

TTY users (hearing or speech impaired users) can call 1-877-833-8855.

Accessory Purchases

Purchase Parts, Accessories and Instruction Books online for all Panasonic Products by visiting our Web Site at:

<http://www.pasc.panasonic.com>

or, send your request by E-mail to:

npcparts@us.panasonic.com

You may also contact us directly at:

1-800-332-5368 (Phone) 1-800-237-9080 (Fax Only)

(Monday - Friday 9 am to 8 pm, EST.)

Panasonic Services Company

20421 84th Avenue South, Kent, WA 98032

(We Accept Visa, MasterCard, Discover Card, American Express, and Personal Checks)

TTY users (hearing or speech impaired users) can call 1-866-605-1277.

Service in Puerto Rico

Panasonic Puerto Rico, Inc.

San Gabriel Industrial Park, Ave. 65 de Infantería, Km. 9.5,

Carolina, Puerto Rico 00985

Phone (787)750-4300, Fax (787)768-2910

For assistance, please visit <http://www.panasonic.com/phonehelp>

23

If you need assistance with setup or operation

- 1** Visit our website: <http://www.panasonic.com/phonehelp>
- 2** Contact us via the web at: <http://www.panasonic.com/contactinfo>
- 3** Call us at: 1-800-211-PANA (1-800-211-7262)
TTY users (hearing or speech impaired users) can call 1-877-833-8855.

When you ship the product

- Carefully pack your unit, preferably in the original carton.
- Attach a letter, detailing the symptom, to the outside of the carton.
- Send the unit to Panasonic Services Company Customer Servicenter, prepaid and adequately insured.
- Do not send your unit to Panasonic Consumer Electronics Company listed below or to executive or regional sales offices. These locations do not repair consumer products.

**Panasonic Consumer Electronics Company,
Division of Panasonic Corporation of North America**
One Panasonic Way, Secaucus, New Jersey 07094

Panasonic Puerto Rico, Inc.
San Gabriel Industrial Park, Ave. 65 de Infantería, Km. 9.5,
Carolina, Puerto Rico 00985

Copyright:

This material is copyrighted by Panasonic Communications Co., Ltd., and may be reproduced for internal use only. All other reproduction, in whole or in part, is prohibited without the written consent of Panasonic Communications Co., Ltd.
© 2006 Panasonic Communications Co., Ltd. All Rights Reserved.

PQQX15086ZA DM0306SM0