

Panasonic®

Operating Instructions

Home Communication System
Cordless Video Camera Handset

Model No. **KX-THA12**

Home Communication System
Cordless Video Camera Handset with TV output

Model No. **KX-THA17**

2LINE



This handset is an accessory handset for use with the KX-TH102 base unit. You must register this handset with your base unit before it can be used.

Charge the handset battery for 6 hours before initial use.

Please read these Operating Instructions before using the unit and save for future reference.

For assistance, visit our website:

<http://www.panasonic.com/phonehelp> for customers in the U.S.A. or Puerto Rico.

Table of Contents

Introduction

Feature highlights	3
Accessory information	5
Expanding your phone system	6
Important safety instructions	9
For best performance	11

Preparation

Setting up the handset	12
Battery charge	13
Battery replacement	14
Controls	15
Display	18
Symbols used in these operating instructions	19
Registering the unit	20
Setting the unit before use	21

Making/Answering Calls

Making calls	22
Answering calls	23
Useful features during a call	23
Using the other line during a call	25

Phonebook

Handset phonebook	26
-----------------------------	----

Caller ID Service

Using Caller ID service	29
Caller list	30

Video Calls

Video call feature	32
Video call settings	35

Intercom

Intercom feature	36
Transferring a call	37
Conference calls	38
Call share	39

Monitoring

Monitoring feature	40
Audio monitor	40
View monitor	41

Handset Camera

Feature

Taking a picture	46
Picture gallery	46

Programmable Settings

Ringer settings	48
Display settings	50
Other settings	51
Registering the unit	54

Answering System

Answering system feature	55
Listening to messages using the handset	55

Using a Cellular Phone with this Unit

Configuring a cellular phone	57
Making/answering calls using a cellular line	57

Useful Information

Wall mounting	60
Headset (Optional)	61
Error messages	62
Troubleshooting	64
FCC and other information	68
Specifications	70
Warranty	71
Customer services	73
Direct commands chart/programming index	74

Index

Index	77
-----------------	----

Feature highlights

Thank you for purchasing the Panasonic Home Communication System Cordless Video Camera Handset/Home Communication System Cordless Video Camera with TV output.

Important:

- For information about the other compatible Panasonic units, see page 5.
- In these operating instructions, the cordless video camera handset and cordless video camera handset with TV output are referred to as the "handset".

Telephone features

■ **2 line telephone**

While one line is in use, you can make or answer a call using the other line.

■ **Video calls**

The handset allows you and the person you are talking to to see each other in real time during an outside call (page 32).

■ **Audio monitor (between handset and base unit/handsets)**

You can listen to the audio in the room where the handset or base unit is located (page 40).

■ **View monitor (between cordless camera and handset)**

The handset allows you to view the room where the cordless camera is located (page 41).

■ **Handset camera**

You can use the handset's built-in camera to take pictures (page 46). These pictures can be used for the phonebook, as wallpaper, and as privacy images for the handset.

■ **Customize ring**

You can connect an audio device to the handset using the audio cable included with your base unit and record songs to be used as the handset ringer tone (page 48).

■ **Cellular convergence**

This feature allows you to save on phone charges by using the handset and base unit to make or answer calls using the cellular line of a connected Bluetooth-compatible cellular phone (page 57).

Introduction

MULTI TALK V software

The CD-ROM included with your base unit contains the MULTI TALK V Utility suite. The suite consists of the following utilities. Refer to the included "Installation Guide for MULTI TALK V Software" for installation details.

■ MULTI TALK V USB Utility

Allows you to use your computer to:

- Add, edit, erase, and backup phonebook entries
- Send images and melodies stored in your computer to your phone
- Play, erase, and save answering system messages
- Change phone settings
- Connect to the Internet or to another computer using a MULTI TALK V phone

■ MULTI TALK V Camera Utility

Allows you to use your computer to register a cordless camera in order to view cordless camera images with a web browser.


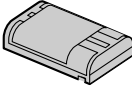
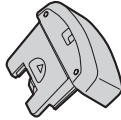
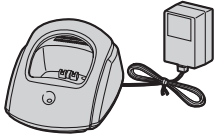


■ MULTI TALK V Printing Utility

Allows you to use your computer to register a KX-THA16 (sold separately) in order to print images from the KX-THA16 to your computer's printer.

Introduction

Accessory information

Included parts

<p><input type="checkbox"/> Handset</p> 	<p><input type="checkbox"/> Battery (Order No. HHR-P104)</p> 	<p><input type="checkbox"/> Handset cover (Order No. PQKK10593Z1)</p> 
<p><input type="checkbox"/> Charger for handset – Charger: (Order No. PQLV30039ZS) – AC adaptor: (Order No. PQLV203Z)</p> 	<p><input type="checkbox"/> Audio cable (Order No. PQJA10172Z)</p> 	<p><input type="checkbox"/> TV-out cable (Order No. XXXXXXXXXXXX)</p> 

Other additional/replacement accessories

- To order these accessories, call 1-800-332-5368.
TTY users (hearing or speech impaired users) can call 1-866-605-1277.

Accessory item	Order number
Rechargeable nickel metal hydride (Ni-MH) battery	HHR-P104
Headset	KX-TCA60, KX-TCA86, KX-TCA88HA, KX-TCA91, KX-TCA92, KX-TCA98

Note:




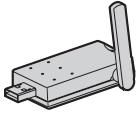

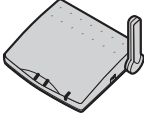
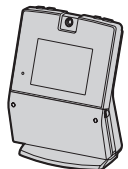
- You can expand your phone system by registering additional compatible Panasonic units (page 6).

Introduction

Expanding your phone system

You can expand the phone system by adding the following units.

- To order these units, call 1-800-332-5368.
TTY users (hearing or speech impaired users) can call 1-866-605-1277.

<p>Additional handset</p> <p>Cordless handset: KX-THA11 (Monochrome display type)</p> 	<p>For monitoring</p> <p>Cordless camera: KX-THA13</p> 
<p>Cordless video camera handset: KX-THA12 (Color display type)</p> 	<p>For data link</p> <p>USB adaptor: KX-THA14</p> 
<p>Cordless video camera handset with TV output: KX-THA17 (Color display type with audio/video outlet jack)</p> 	<p>Expanding your range</p> <p>Range extender: KX-THA15</p> 
<p>Cordless video camera station: KX-THA16 (Large color display type)</p> 	

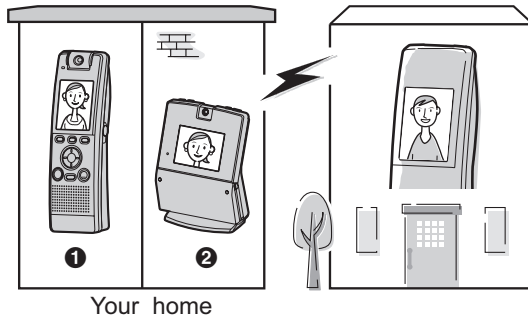
Note:

- The following units can be registered to a single base unit:
 - Handsets (KX-THA11/KX-THA12/KX-THA16/KX-THA17): max. 8
 - Other units (KX-THA13/KX-THA14/KX-THA15 and a maximum of 5 Bluetooth featured cellular phones and headsets): max. 10

Introduction

Various features using the optional units

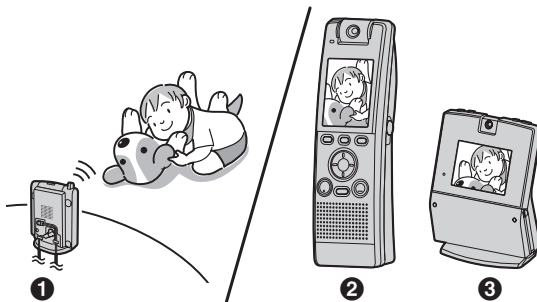
Video call



This feature allows you and the person you are talking to to see each other in real time for an outside call using the handsets. If you have additional units (1, 2), you can also make a video call during an intercom call.

- 1 KX-THA12/KX-THA17
- 2 KX-THA16

View monitor



This feature allows you to view the room where the cordless camera (1) is located from the units (2, 3). You can also view the room between the units (2, 3).

- 1 KX-THA13
- 2 KX-THA12/KX-THA17
- 3 KX-THA16

Cellular convergence (compatible with Bluetooth)

Your cellular phone

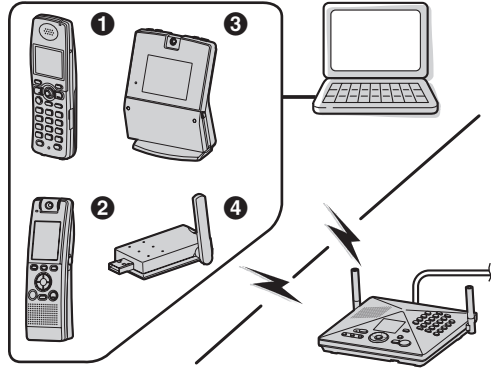


This feature allows you to save on phone charges by using your unit (1, 2, 3 and the base unit) to make or answer calls using the cellular line of a connected Bluetooth-compatible cellular phone.

- 1 KX-THA11
- 2 KX-THA12/KX-THA17
- 3 KX-THA16

Introduction

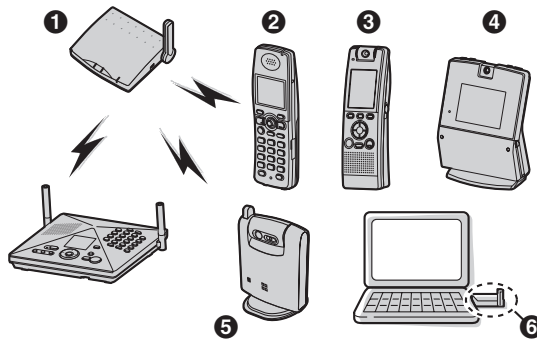
Data link feature



This feature allows you to access the Internet or another computer by connecting the units (1, 2, 3) or a USB adaptor (4) to your computer.

- 1 KX-THA11
- 2 KX-THA12/KX-THA17
- 3 KX-THA16
- 4 KX-THA14

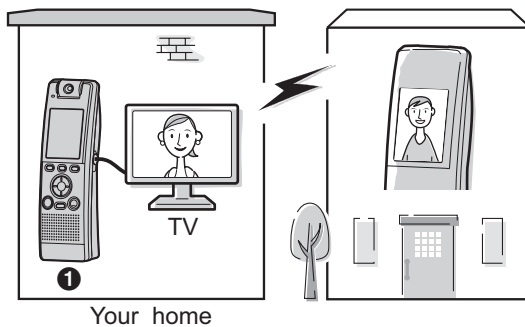
Range extension



By using a range extender (1), you can extend the usage area of the units (2, 3, 4, 5, 6).

- 1 KX-THA15
- 2 KX-THA11
- 3 KX-THA12/KX-THA17
- 4 KX-THA16
- 5 KX-THA13
- 6 KX-THA14

Video call using TV



This feature allows you to use your TV to see the other person during a video call.

- 1 KX-THA17

Introduction

Important safety instructions

When using the product, basic safety precautions should always be followed to reduce the risk of fire, electric shock, or personal injury.

1. Read and understand all instructions.
2. Follow all warnings and instructions marked on the product.
3. Unplug the product from power outlets before cleaning. Do not use liquid or aerosol cleaners. Use a moist cloth for cleaning.
4. Do not use the product near water, for example near a bathtub, wash bowl, kitchen sink, etc.
5. Place the product securely on a stable surface. Serious damage and/or injury may result if the product falls.
6. Do not cover slots and openings on the product. They are provided for ventilation and protection against overheating. Never place the product near radiators, or in a place where proper ventilation is not provided.
7. Use only the power source marked on the product. If you are not sure of the type of power supplied to your home, consult your dealer or local power company.
8. Do not place objects on the power cord. Install the product where no one can step or trip on the cord.
9. Do not overload power outlets and extension cords. This can result in the risk of fire or electric shock.
10. Never push any objects through slots in the product. This may result in the risk of fire or electric shock. Never spill any liquid on the product.
11. To reduce the risk of electric shock, do not disassemble the product. Take the product to an authorized service center when service is required. Opening or removing covers may expose you to dangerous voltages or other risks.
12. Unplug the product from power outlets and refer servicing to an authorized service center when the following conditions occur:
 - A. When the power cord is damaged or frayed.
 - B. If liquid has been spilled into the product.
 - C. If the product has been exposed to rain or water.
 - D. If the product does not work normally by following the operating instructions. Adjust only controls covered by the operating instructions. Improper adjustment may require extensive work by an authorized service center.
 - E. If the product has been dropped or physically damaged.
 - F. If the product exhibits a distinct change in performance.
13. During thunderstorms, avoid using telephones except cordless types. There may be a remote risk of an electric shock from lightning.
14. Do not use the product to report a gas leak, when in the vicinity of the leak.

SAVE THESE INSTRUCTIONS

CAUTION:

Installation

- Do not touch the plug with wet hands.
- The AC adaptor is used as the main disconnect device. Ensure that the AC outlet is installed near the product and is easily accessible.

Battery

To reduce the risk of fire or injury to persons, read and follow these instructions.

- Use only the battery(ies) specified.

Introduction

- Do not dispose of the battery(ies) in a fire. They may explode. Check with local waste management codes for special disposal instructions.
- Do not open or mutilate the battery(ies). Released electrolyte is corrosive and may cause burns or injury to the eyes or skin. The electrolyte may be toxic if swallowed.
- Exercise care when handling the battery(ies). Do not allow conductive materials such as rings, bracelets or keys to touch the battery(ies), otherwise a short circuit may cause the battery(ies) and/or the conductive material to overheat and cause burns.
- Charge the battery(ies) provided, or identified for use with the product only, in accordance with the instructions and limitations specified in this manual.

WARNING:

- To prevent the risk of fire or electrical shock, do not expose the product to rain or any type of moisture.
- Unplug the product from power outlets if it emits smoke, an abnormal smell, or makes an unusual noise. These conditions can cause fire or electric shock. Confirm that smoke has stopped and contact the Panasonic Call Center at 1-800-211-PANA (7262).

Medical

- Consult the manufacturer of any personal medical devices, such as pacemakers or hearing aids, to determine if they are adequately shielded from external RF (radio frequency) energy. (The product operates in the frequency range of 2.4 GHz to 2.48 GHz, and the power output is 125 mW (max.)) Do not use the product in health care facilities if any regulations posted in the area instruct you not to do so. Hospitals or health care facilities may be using equipment that

could be sensitive to external RF (radio frequency) energy.

Introduction

For best performance

Noise

This unit communicates using radio waves.

For maximum distance and noise-free operation, we recommend the following:

- Placing the product away from electrical appliances.
- If you use the handset near a microwave oven which is being used, noise may be heard. Move away from the microwave oven and closer to the base unit.
- If you use the handset near another cordless phone's base unit, noise may be heard. Move away from the other cordless phone's base unit and closer to your base unit.

Environment

- Keep the product away from electrical noise generating devices, such as fluorescent lamps and motors.
- The product should be kept free from excessive smoke, dust, high temperature, and vibration.
- The product should not be exposed to direct sunlight.
- Do not place heavy objects on top of the product.
- When you leave the product unused for a long period of time, unplug the product from the power outlet.
- The product should be kept away from heat sources such as heaters, kitchen stoves, etc. It should not be placed in rooms where the temperature is less than 5 °C (41 °F) or greater than 40 °C (104 °F). Damp basements should also be avoided.
- The maximum calling distance may be shortened when the product is used in the following places: Near obstacles such as hills, tunnels, underground, near metal objects such as wire fences, etc.

- Operating near 2.4 GHz electrical appliances may cause interference. Move away from the electrical appliances.

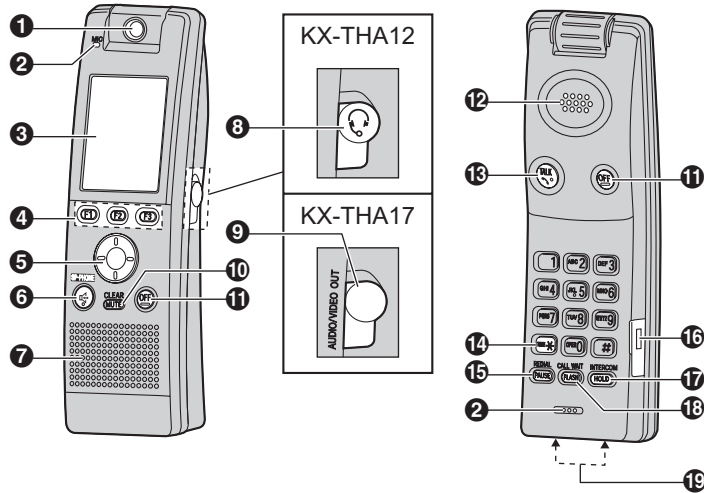
Routine care

- Wipe the outer surface of the product with a soft moist cloth. Do not use benzene, thinner, or any abrasive powder.

Preparation

Controls

Handset

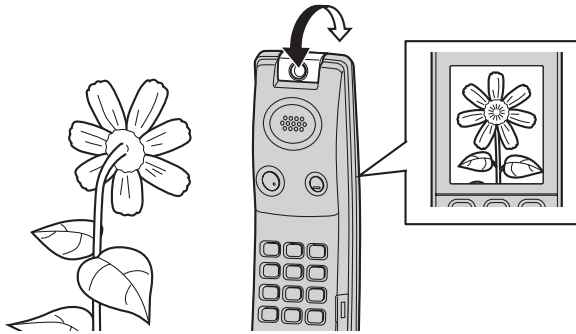


- | | |
|---|-----------------------|
| ① Camera lens | ⑩ [MUTE] [CLEAR] |
| ② MIC (Microphone) | ⑪ [OFF] |
| ③ Display | ⑫ Receiver |
| ④ Soft keys (F1, F2, F3) | ⑬ [TALK] |
| ⑤ Navigator key | ⑭ [*] (TONE) |
| ⑥ [SP-PHONE] | ⑮ [PAUSE] [REDIAL] |
| ⑦ Speaker | ⑯ USB port |
| ⑧ Headset jack/Audio jack | ⑰ [HOLD] [INTERCOM] |
| ⑨ Headset jack/AUDIO OUT/VIDEO OUT jack | ⑱ [FLASH] [CALL WAIT] |
| | ⑲ Charge contacts |

Preparation

Adjusting the camera lens angle

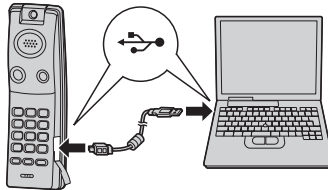
Aim the camera lens by rotating the lens forward or backward.



Connecting the USB cable to the handset

By connecting the USB cable to the USB port, you can:

- use MULTI TALK V USB Utility with your computer.
- access to the Internet (broadband or dial up) with your computer.
- view the images through the cordless camera with your computer.
- update your phone's firmware.



Preparation

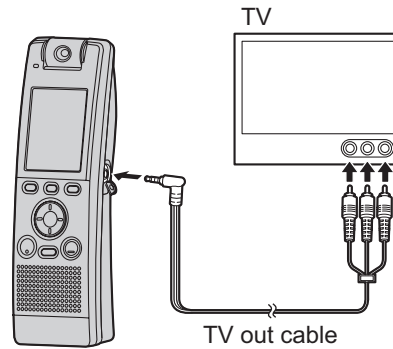
Connecting the handset to your TV (KX-THA17 only)

By connecting the handset to your TV using the included TV-out cable, you can use your TV to view images that are displayed on the handset. Using this feature, video calls, view monitor sessions, and images in the picture gallery can be displayed on your TV.

Important:

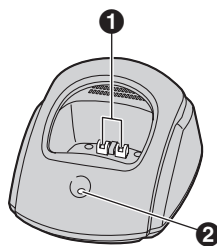
- In order to use this feature, you must connect the handset to your TV with the included TV-out cable before you start a video call, view monitor session, or enter the picture gallery.

Connect the handset to your TV using included TV-out cable.



- Make sure that the TV-out cable is connected to the same color of the TV jack.
 - To start a video call, see page 32.
 - To start a view monitor session, see page 41.
 - To view the images in the picture gallery, see page 46.

Charger



- ❶ Charge contacts
- ❷ CHARGE indicator

Useful Information

FCC and other information

WHEN PROGRAMMING EMERGENCY NUMBERS AND(OR) MAKING TEST CALLS TO EMERGENCY NUMBERS:

- 1) Remain on the line and briefly explain to the dispatcher the reason for the call.
- 2) Perform such activities in the off-peak hours, such as early morning or late evenings.

This device complies with Part 15 of the FCC Rules. Operation is subject to the following two conditions:

(1) This device may not cause harmful interference, and (2) this device must accept any interference received, including interference that may cause undesired operation.

Privacy of communications may not be ensured when using this phone.

CAUTION:

Any changes or modifications not expressly approved by the party responsible for compliance could void the user's authority to operate this device.

NOTE:

This equipment has been tested and found to comply with the limits for a Class B digital device, pursuant to Part 15 of the FCC Rules. These limits are designed to provide reasonable protection against harmful interference in a residential installation. This equipment generates, uses, and can radiate radio frequency energy and, if not installed and used in accordance with the instructions, may cause harmful interference to radio communications. However, there is no guarantee that interference will not occur in a particular installation. If this equipment does cause harmful interference to radio or television reception, which can be determined by turning the equipment off and on, the user is encouraged to try to correct the

interference by one or more of the following measures:

- Reorient or relocate the receiving antenna.
- Increase the separation between the equipment and receiver.
- Connect the equipment into an outlet on a circuit different from that to which the receiver is connected.
- Consult the dealer or an experienced radio/TV technician for help.

Some cordless telephones operate at frequencies that may cause interference to nearby TVs and VCRs. To minimize or prevent such interference, the base of the cordless telephone should not be placed near or on top of a TV or VCR. If interference is experienced, move the cordless telephone further away from the TV or VCR. This will often reduce, or eliminate, interference.

FCC RF Exposure Warning:

The product complies with FCC radiation exposure limits set forth for an uncontrolled environment. The handset must not be colocated or operated in conjunction with any other antenna or transmitter.

Responsible party:

Panasonic Corporation of North America
One Panasonic Way,
Secaucus, New Jersey 07094
Phone number: 1-800-211-PANA (7262)

FCC Warning:

To ensure compliance with FCC emissions limits, use only the included USB cable with the ferrite core when connecting the unit to a computer.

Useful Information

Notice

- This cordless telephone is designed for use in the United States of America. Sale or use of this product in other countries may violate local laws.
- Ce téléphone sans fil est conçu pour être utilisé aux États-Unis d'Amérique. La vente ou l'emploi de cet appareil dans certains autres pays peut constituer une infraction à la législation locale.
- Este teléfono inalámbrico fue elaborado para uso en los Estados Unidos de América. La venta o el empleo de este producto en ciertos países puede constituir violación de la legislación local.
- このコードレス電話機は、日本国外での使用を目的として設計されており、日本国内での使用は法律違反となります。従って、当社では日本国内においては原則として修理などのサービスは致しかねます。

Useful Information

Specifications

General

Operating environment	5 °C – 40 °C (41 °F – 104 °F)
Frequency	2.4 GHz – 2.48 GHz
Bluetooth compliance	Bluetooth specification 1.1 and 1.2

KX-THA12/KX-THA17

Dimensions	Approx. height 171 mm x width 51 mm x depth 51 mm (6 ¹¹ / ₁₆ inches x 2 inches x 2 inches)	
Mass (Weight)	Approx. 220 g (0.49 lb.)	
Power consumption	Standby: Approx. 2.6 W Maximum: Approx. 5.5 W	
Power output	125 mW (max.)	
Power supply	Ni-MH battery (3.6 V, 830 mAh)	
Built-in camera	Number of pixels	300,000 pixel (1/5 inch CMOS sensor)
	Illuminance	10 lux
	Focus	Fixed 0.1 m (3 ¹⁵ / ₁₆ inches) – Infinity
	Viewing angle	Horizontal angle: Approx. 38° Vertical angle: Approx. 30°
Video system	ITU-T Standard H.324	
Resolution	Image size (QCIF) 176 x 144 pixels	

Charger

Dimensions	Approx. height 64 mm x width 88 mm x depth 99 mm (2 ¹⁷ / ₃₂ inches x 3 ¹⁵ / ₃₂ inches x 3 ²⁹ / ₃₂ inches)
Mass (Weight)	Approx. 120 g (0.26 lb.)
Power consumption	Standby: Approx. 1.0 W Maximum: Approx. 4.0 W
Power supply	AC adaptor (120 V AC, 60 Hz)

Note:

- Design and specifications are subject to change without notice.
- The illustrations in these instructions may vary slightly from the actual product.

Trademarks

- Bluetooth is a registered trademark of Bluetooth SIG, Inc.

Useful Information

Customer services

Customer Services Directory

Obtain Product Information and Operating Assistance; locate your nearest Dealer or Servicenter; purchase Parts and Accessories; or make Customer Service and Literature requests by visiting our Web Site at:

<http://www.panasonic.com/consumersupport>

or, contact us via the web at:

<http://www.panasonic.com/contactinfo>

You may also contact us directly at: 1-800-211-PANA (7262),
Monday-Friday 9 am-9 pm; Saturday-Sunday 10 am-7 pm, EST.

TTY users (hearing or speech impaired users) can call 1-877-833-8855.

Accessory Purchases

Purchase Parts, Accessories and Instruction Books online for all Panasonic Products by visiting our Web Site at:

<http://www.pasc.panasonic.com>

or, send your request by E-mail to:

npcparts@us.panasonic.com

You may also contact us directly at:
1-800-332-5368 (Phone) 1-800-237-9080 (Fax Only)
(Monday - Friday 9 am to 8 pm, EST.)

Panasonic Services Company
20421 84th Avenue South, Kent, WA 98032
(We Accept Visa, MasterCard, Discover Card, American Express, and
Personal Checks)

TTY users (hearing or speech impaired users) can call 1-866-605-1277.

Service in Puerto Rico

Panasonic Puerto Rico, Inc.
San Gabriel Industrial Park, Ave. 65 de Infantería, Km. 9.5,
Carolina, Puerto Rico 00985
Phone (787)750-4300, Fax (787)768-2910