

1.9GHz Wireless Handheld Microphone

K-SHH14

FCC CAUTION

Changes or modifications not expressly approved by the party responsible for compliance could void the user's authority to operate the equipment.

This device complies with part 15 of the FCC Rules. Operation is subject to the following two conditions: (1) This device may not cause harmful interference, and (2) this device must accept any interference received, including interference that may cause undesired operation.

Radio Frequency (RF) Exposure Warning

The available scientific evidence does not show that any health problems are associated with using low power wireless devices. There is no proof, however, that these low power wireless devices are absolutely safe. Low power Wireless devices emit low levels of radio frequency energy (RF) in the microwave range while being used. Whereas high levels of RF can produce health effects (by heating tissue), exposure of low-level RF that does not produce heating effects causes no known adverse health effects. Many studies of low-level RF exposures have not found any biological effects. Some studies have suggested that some biological effects might occur, but such findings have not been confirmed by additional research. 1.9GHz Wireless Handheld Microphone, model K-SHH14 has been tested and found to comply with FCC radiation exposure limits set forth for an uncontrolled environment and meets the FCC radio frequency (RF) Exposure Guidelines.

Notice

FCC ID can be found on the battery compartment of the units.

MEDICAL:

Consult the manufacturer of any personal medical devices, such as pacemakers, to determine if they are adequately shielded from external RF (radio frequency) energy. The unit operates in the frequency range of 1.92 GHz to 1.93 GHz.

Do not use the unit in health care facilities if any regulations posted in the area instruct you not to do so. Hospitals or health care facilities may be using equipment that could be sensitive to external RF (radio frequency) energy.

WARNING:

- 1) To prevent fire or electric shock hazard, do not expose this apparatus to rain or moisture.
- 2) The apparatus should not be exposed to dripping or splashing and no objects filled with liquids, such as vases, should be placed on the apparatus.
- 3) Batteries shall not be exposed to excessive heat such as sunshine, fire or the like

A lithium ion/polymer battery that is recyclable powers the product you have purchased. Please call 1-800-8-BATTERY for information on how to recycle this battery.



The model number and serial number of this product may be found on the surface of the unit. You should note the model number and serial number of this unit in the space provided and retain this book as a permanent record of your purchase to aid identification in the event of theft.

Model No. _____

Serial No. _____

Important Safety Instructions

- 1) Read these instructions.
- 2) Keep these instructions.
- 3) Heed all warnings.
- 4) Follow all instructions.
- 5) Do not use this apparatus near water.
- 6) Clean only with dry cloth.
- 7) Do not block any ventilation openings. Install in accordance with the manufacturer's instructions.
- 8) Do not install near any heat sources such as radiators, heat registers, stoves, or other apparatus (including amplifiers) that produce heat.
- 9) Only use attachments/accessories specified by the manufacturer.

Precautions

Turn off the power supply when inside an aircraft.

The product might interfere with operational safety of the aircraft.

Do not attempt to disassemble or shortcircuit rechargeable batteries.

An exploding battery or leaking battery fluid may result in fire, injury and burns.

Avoid placing the product in unstable conditions.

Failure to do so may cause injury.

Stop operation immediately when something is wrong with the product.

When smoke goes up from the product or the smell of smoke comes from the product, continued use will result in fire. Immediately remove the battery and the battery charger, and contact your dealer.

Do not swing the product around on its strap.

The strap might come off, resulting in personal injury or damage to the product.

[Precautions for use]

- Operating temperature:

5 °C - 35 °C {41 °F - 95 °F}

When calculating the battery life, note that temperatures below 10 °C {50 °F} shorten the battery duration.

- Do not disassemble the product or touch internal parts.
- Battery power is slightly consumed even when the power of this product is OFF. If the battery is left unused, that may result in liquid leakage. To prevent this, remove the battery from the product when unused for a long time.
- Exercise care when using the product in high places. If it falls down, it may cause personal injury or suffer damage.
- Do not use or leave the battery in places where it will be exposed to high temperatures, such as in strong direct sunlight, in a sun-heated car, by the fire, or in front of a stove.
- Do not touch the battery poles or contacts inside the battery cover with dirty hands. Otherwise poor contact or noise may result. If dirty, wipe off with a dry soft cloth. The contacts inside the battery cover tend to get dirty. Clean them regularly (about once a month) with ethyl alcohol. Do not use solvents, such as benzine or thinner, or a metal polish. Otherwise the contacts may become deformed or discolored, or the brass plating may come off.
- Do not use a deteriorated or short-circuited battery. A battery in this condition may leak fluid, overheat and cause damage.
- The product is not made to drip-proof specification. Do not use the product with the wet hands in a place where it is directly exposed to water.
- Do not swing the product around on the neck strap. To prevent strangling, the closure of the strap provided for hanging the product around the neck is designed to give way under pressure. If swung around on the neck strap, the closure will open and the product will fly away, resulting in personal injury or damage to the product.
- The product is designed for indoor use.
- Use the product in a location where it is relatively shielded from noise produced by rotating machinery, transformers or the ignition system or automobiles.
- Do not place the product on top of heatgenerating equipment, such as powered amplifiers, video monitors or measuring instruments, and do not leave it in a closed car in hot summer. When storing the product, do so in a dry place.
- The product is high-precision adjusted; exposing it to strong impact or dropping it on the floor may change its characteristics. Handle the product with due care. Do not expose the product to shock or impact as this will cause the audio output of the receiver to give off noise on impact.

Product care

- Clean the power source with a dry cloth.
- Do not clean with volatile liquids such as benzine and thinner.
- When using a chemical cloth for cleaning, observe the cautions provided with that product.

Useful hints

- Noise prevention

Turn off the power of this product, and turn down the volume of a powered amplifier, mixer, etc. before replacing, removing or inserting the battery, as this might produce a large noise from these devices.

- Volume control

When the volume control from this product goes wrong, move closer to the receiver and then try again to adjust the volume.

CONTENTS

Important Safety Instructions

Precautions

Major operating controls and their functions

Inserting a battery

Using the microphone

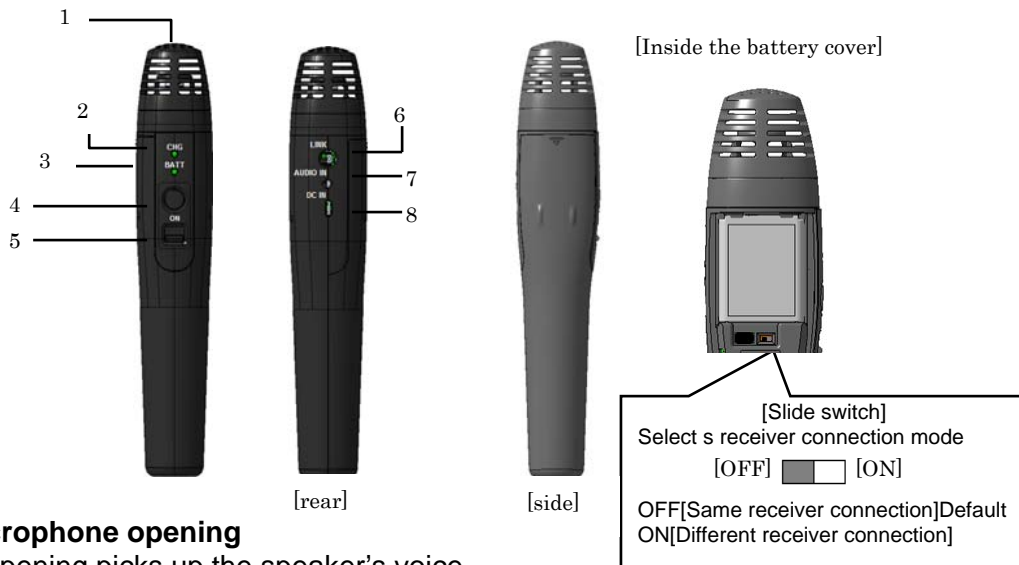
Connecting an external device

Replacing a battery

Charging a rechargeable battery

Troubleshooting

Specifications



[1]Microphone opening

This opening picks up the speaker's voice.

[2] Charge indicator (red) [CHG]

Indicates the charging status.

ON: Charging completed .

OFF:, No connected a charge connector or no battery installed.

Blinking (2 seconds) : Charging

* In the case of a complete discharge state, the first about 1minute red LED lights RED.

Blinking(1 second) : Charge Error

(3)Battery indicator [BATT]

Indicates the status of the microphone power supply and the battery condition as follows:

Green light: Power is turned "ON".

Yellow light: Power is turned "ON", but battery is nearing its end.

Red light: Battery is depleted. Charge the battery.

Light off: Power is turned "OFF".

Blinking (green) : Standby state.(A microphone is ready)

Blinking (yellow) : Out of Range.

[4]Talk push-button

While pushing the Talk-push button, it can talk with a microphone.

[5][TALK] button

[ON] : Usable Classroom Audio condition (It can talk with a microphone.)

[OFF] : standby condition. (It cannot talk with a microphone.)

[6][LINK] button (rear)

Pressing this button will turn the microphone power [ON/OFF]. To turn "ON", press it for 1 second or more, to turn "OFF", press it for 2 seconds or more.

(Pairing with a receiver is performed at the time of the power ON.)

[7]External input terminal [AUDIO IN] (rear)

Transmits the audio from a connected external device to the receiver.

When an external device is connected to this terminal, audio from the [1]Microphone opening is muted.

[8]DC input terminal (rear)

Used to connect the charger for charging the battery installed in the microphone and to supply power to the microphone.

[9]Battery cover(side)

To remove the battery cover, push it down and pull it off.

[10]Slide switch (inside the battery cover)

Select the starting connection mode..

[ON] : Different receiver connection

[OFF]: Same receiver connection (Default)

[11]Battery slot (inside the battery cover)

Install one lithium-ion rechargeable battery, paying attention to the charging terminal inside the battery cover.

Inserting a battery

- To insert a battery, turn off the power of the microphone, and make sure that the microphone is not connected to the charger.
- To replace a battery, refer to “Replacing a battery”.

Note:

- Do not touch the battery poles with hands. Otherwise poor contact or noise may result. If dirty, wipe off with a dry soft cloth.



1 Confirm that the battery indicator is off.

2 Remove the battery cover.

Pull the battery cover in the arrow direction while pressing the A portion with both right and left thumbs to remove the cover.

3 Install a battery.

Insert the battery and card, making sure that their orientation is correct.

About batteries that you can use with this unit

The 1U583136R-B006A (Lithium Ion Battery) is the only battery that can be used in this microphone.

4 Attach the battery cover.

Push up the battery cover to the direction of the arrow in the figure, and fit it to its original position.

Using the microphone



1 To turn on the microphone, press its LINK-button

The battery indicator of the microphone lights.

Memo:

- When [BAT] indicator RED Blink, the registration to a receiver is required.
- Microphone slide switch(inside battery cover) ON. (Different receiver connection)
- After turn on receiver's [LINK] button,
turn on Microphone [LINK] button. (microphone power OFF state)

2[TALK-push] button ON.

- While pushing the Talk-push button, it can talk with a microphone.
(MIC1 or MIC2 indicator of the receiver lights green.)

Memo:

Turns the [TALK] button ON when pushed up and maintains this condition. Used when talking for extended periods of time.

Important:

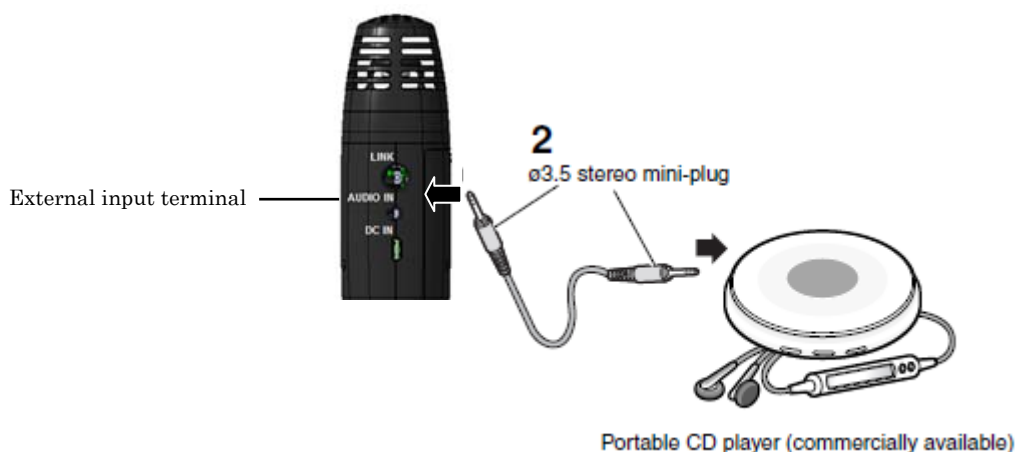
- While using the microphone, do not take the microphone close to the speaker.
Loud noises such as feedback may damage your hearing.

Note:

- Also read the operating instructions of the receiver (K-SRC14), and the Access point (K-SAP14).

Connecting an external microphone

You can connect an external device (for example, a portable CD player) to the external input terminal and transmit the audio to the receiver.



1 Turn off the power of the microphone and the external device.

2 Connect an external device.

Use a ø3.5 stereo mini-plug to connect the external device (for example, a portable CD player) to the external input terminal.

3 Turn on the power of the external device (for example, a portable CD player).

4 Turn on the power of the microphone.

5 Adjust the volume.

Adjust the audio volume of the external device.

Note:

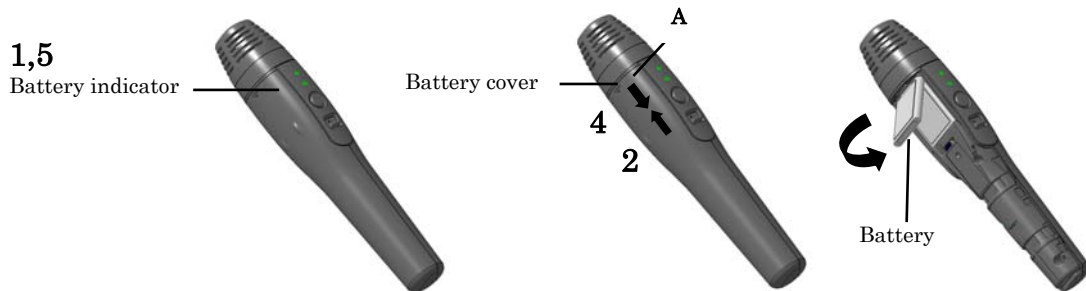
- Once a ø3.5 stereo mini-plug is plugged into the external input terminal, priority is given to this input and the audio from the microphone opening and the microphone input terminal will not be transmitted.
- If the audio of the external device is stereo, stereo signals will be mixed.
- In addition to this manual, refer to the operating instructions of the device to be connected.

Replacing a battery

- To replace the battery, turn off the power of the microphone, and make sure that the microphone is not connected to the charger.

Note:

- Do not touch the battery poles with hands. Otherwise poor contact or noise may result. If dirty, wipe off with a dry soft cloth.
- Battery power is slightly consumed even when the power of this product is OFF. If the battery is left unused, that may result in liquid leakage. To prevent this, remove the battery from the product when unused for a long time.



1 Turn off the power by pressing the power switch.

Confirm that the battery indicator is off.

2 Remove the battery cover.

Pull the battery cover in the arrow direction while pressing the A portion with both right and left thumbs to remove the cover.

3 Install a new battery.

Insert the battery and card, making sure that their orientation is correct

About batteries that you can use with this unit

The 1U583136R-B006A (Lithium Ion Battery) is the only battery that can be used in this microphone.

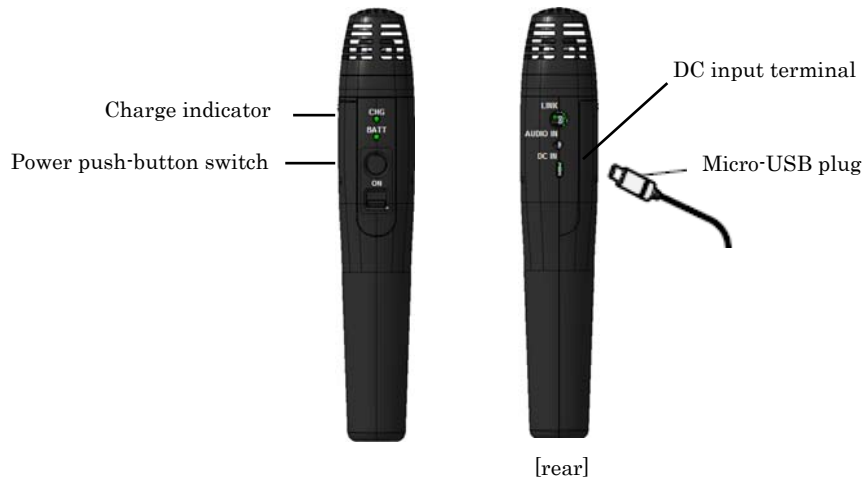
4 Attach the battery cover.

Push up the battery cover, and fit it to its original position.

5 Confirm that the battery indicator lights.

Press the power switch or power push-button switch, turn on the power of the microphone, and confirm that the battery indicator lights green or orange.

Charging a battery



1 Turn off all microphones.

2 Connect the micro-USB plug of the charger to the DC input terminal of the microphone.

When inserting the **micro-USB** plug into the DC input terminal, of the microphone. After connecting the microphone to the charger, the charge indicator (red) indicates the charging status as follows:

ON: Charging completed .

OFF: No connected a charge connector or no battery installed.

Blinking (2 seconds) : Charging

* In the case of a complete discharge state, the first about 1 minute red LED lights RED.

Blinking(1 second) : Charge Error. Indicates one of the following conditions.

- The temperature of the battery may be out of the acceptable range. Confirm that the temperature is within the acceptable range.

Important:

- If the microphone is connected to the charger with the power turned on, the microphone will be powered off and charging will start. Button operation does not move during charge connector connection.

Note:

- If the charger remains connected after charging is completed, it will not restart charging to make up for any amount lost due to self-discharge.
- If the microphone is turned off and the charger is connected, but the charge indicator does not light, check to see that the micro-USB plug of the charger is properly plugged into the DC input terminal, the power cable of the charger into the charger.

- Charging takes up to 4 hours, but the charging time varies depending on status of use.
- Charging at a temperature outside the normal range may result in significantly longer charging times.

Note, however, that charging times may become longer even within the operating temperature range, if the temperature of the microphone is higher or lower than the normal condition.

- The charger and the microphone may get hot slightly during charging.
- Do not charge a rechargeable battery that has just been fully charged. Otherwise you will shorten the life of the battery.
- Also read the operating instructions of the charger.

Trouble shooting

Before asking for repairs, check the symptoms with the following table.

Contact a dealer if the suggested remedies do not correct the problem or if the problem is not described below.

| Symptom | Cause/solution |
|--|---|
| The power cannot be turned on. | <ul style="list-style-type: none"> · Is the battery charger connected to the microphone (with no battery)? >> Connect the charger to the microphone. |
| | <ul style="list-style-type: none"> Is microphone charging? (CHG indication RED or RED brink) >>Please extract a charge cable. |
| | <ul style="list-style-type: none"> · Is the battery depleted? >> charge the battery. |
| Does not use(CHG LED is RED) | <ul style="list-style-type: none"> Pairing registration with a receiver has not been performed. >> (1) Press a receiver's [LINK] button, and a receiver is made into register mode. (2)Press microphone [LINK] button will register for receiver. (microphone power OFF state) |
| No sound | <ul style="list-style-type: none"> Is the ø3.5 stereo mini-plug connected to the external input terminal? >> Disconnect the ø3.5 stereo mini-plug from the external input terminal. |
| Does not charge (charge indicator is off) | <ul style="list-style-type: none"> · Is a battery installed? >> Install a rechargeable battery. |
| | <ul style="list-style-type: none"> · Is the micro-USB plug of the charger inserted all the way into the DC input terminal? >> Confirm the connection. |
| Does not charge (The charge indicator brink, but goes lights after a few minutes) | <ul style="list-style-type: none"> Are you trying to charge a battery that has just been charged? >> The battery is already fully charged. Remove the charger from the microphone, and use the microphone with the battery |
| Does not charge (charge indicator is blinking) | <ul style="list-style-type: none"> Is the battery extremely hot? >> Disconnect the charger once and allow the battery to cool off before reconnecting. |
| | <ul style="list-style-type: none"> Has the battery deteriorated? >> Deteriorated rechargeable battery will shorten the battery duration or cannot turn on the microphone. Replace the deteriorated battery with a new rechargeable one. |

| | |
|--|---|
| Does not use(CHG LED is Yellow blinking) | Microphone is out of range. Please use in the range |
| | Is the receiver's power supply on? Please check a receiver's power supply. |

Specifications

| | |
|-------------------------------|--|
| Radio Standard | DECT |
| Frequency Range: | 1,920.0~1,930.0MHz |
| Coverage | 20m (NORMAL) 30m (Hi POWER) |
| Microphone type | Unidirectional electret condenser microphone |
| Audio Frequency Response | 100Hz to 8 kHz (From Microphone to receiver) |
| External input | -14 dBV ø3.5 stereo mini jack (monaural mix) |
| Battery | Lithium Ion Battery (Chargeable) |
| Battery life | about 2years (Battery needs to be replaced every 2 years) |
| Talk time | Around 8 hours |
| Charge Time | Around 4 hours |
| Charging method | Power Supply with micro USB Port |
| Dimensions | 217 H x 38W x 44 D [mm], excluding projections. |
| Weight | 115g (not including Batteries) |
| Temperature Range | 5°C ~ +35°C {41 °F - 95 °F} |
| Humidity Range | ~90% |
| The Condition of Installation | Indoor use |

Weights and dimensions indicated are approximate.

Specifications are subject to change without notice.