

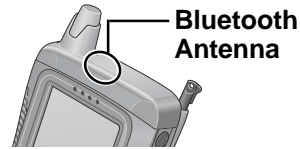
Panasonic®

Using a Bluetooth

ENGLISH	SUPPLEMENTARY INSTRUCTIONS	ENGLISH
	<i>The Setup Wizard</i>	
	<i>Starting My Wirefree Network</i>	
	<i>Device Discovery</i>	
	<i>Serial Ports</i>	
	<i>Specifications</i>	

Supplementary Instructions

This Supplementary Instructions explains how to get started with a Bluetooth and point out cases where the operation of the computer will differ from that in the Operating Instructions.



NOTE

Bluetooth communications are done via an antenna. Do not shield this antenna with the hand, etc. This will negatively effect the performance of your Bluetooth communications.

Information to the User

This product and your Health

This product, like other radio devices, emits radio frequency electromagnetic energy. The level of energy emitted by this product however is far much less than the electromagnetic energy emitted by wireless devices like for example mobile phones.

Because this product operates within the guidelines found in radio frequency safety standards and recommendations, we believe this product is safe for use by consumers. These standards and recommendations reflect the consensus of the scientific community and result from deliberations of panels and committees of scientists who continually review and interpret the extensive research literature.

In some situations or environments, the use of this product may be restricted by the proprietor of the building or responsible representatives of the organization. These situations may for example include:

- Using this product on board of airplanes, or
- In any other environment where the risk of interference to other devices or services is perceived or identified as harmful.

If you are uncertain of the policy that applies on the use of wireless devices in a specific organization or environment (e.g. airports), you are encouraged to ask for authorization to use this product prior to turning on the product.

Regulatory Information

We are not responsible for any radio or television interference caused by unauthorized modification of this product. The correction of interference caused by such unauthorized modification will be the responsibility of the user. We and its authorized resellers or distributors are not liable for damage or violation of government regulations that may arise from failing to comply with these guidelines.

Read Me First - For U.S.A.

Replace as follows.

Federal Communications Commission Radio Frequency Interference Statement

Note: This equipment has been tested and found to comply with the limits for a Class B digital device, pursuant to Part 15 of the FCC Rules. These limits are designed to provide reasonable protection against harmful interference in a residential installation. This equipment generates, uses and can radiate radio frequency energy and, if not installed and used in accordance with the instructions, may cause harmful interference to radio communications. However, there is no guarantee that interference will not occur in a particular installation. If this equipment does cause harmful interference to radio or television reception, which can be determined by turning the equipment off and on, the user is encouraged to try to correct the interference by one or more of the following measures:

- Reorient or relocate the receiving antenna.
- Increase the separation between the equipment and receiver.
- Connect the equipment into an outlet on a circuit different from that to which the receiver is connected.
- Consult the Panasonic Service Center or an experienced radio/TV technician for help.

Safety Notice

- Do not touch or move antenna while the unit is transmitting or receiving.
- Do not hold any component containing the radio such that the antenna is very close or touching any exposed parts of the body, especially the face or eyes, while transmitting.
- Do not operate a portable transmitter near unshielded blasting caps or in an explosive environment unless it is type especially qualified for such use.

Warning

To assure continued compliance, use only shielded interface cables when connecting to a computer or peripheral. Also, any changes or modifications not expressly approved by the party responsible for compliance could void the user's authority to operate this equipment.

FCC Radiation Exposure Statement:

- This equipment complies with FCC radiation exposure limits set forth for an uncontrolled environment.
- This equipment must be installed and operated in accordance with provided instructions and minimum 1.5 cm spacing must be provided between antenna and all person's body (excluding extremities of hands, wrist and feet) during wireless modes of operation.
- This equipment may use multiple installed transmitters, which may be capable of simultaneous transmission.

This device complies with Part 15 of the FCC Rules. Operation is subject to the following two conditions:

- (1) This device may not cause harmful interference, and
- (2) This device must accept any interference received, including interference that may cause undesired operation.

Responsible Party: Matsushita Electric Corporation of America

One Panasonic Way
Secaucus, NJ 07094
Tel No: 1-800-LAPTOP-5 (1-800-527-8675)

ENGLISH

The Setup Wizard

The Setup Wizard guides you through each step necessary to configure your device for connectivity.

Setup: Welcome

My Wirefree Network assigns **PDA** as the default name. This is the name by which your PDA will be known to other devices.

A personal device passkey is used during bonding or connections for security purposes. The default is to not set a personal device passkey. A personal device passkey is only recommended when advanced security is enabled.

To personalize your device settings:

1. Enter a device name.
2. If you want to have a personal device passkey, enter the same value in **Passkey** and **Confirm Passkey**.
3. Tap **Next**.

My Wirefree Setup 6:03

Welcome

This wizard will set up your network preferences. Please enter a name and passkey for this device.

Name:

Passkey:

Confirm Passkey:

Next

Setup: Hardware Test

The hardware test initializes and tests the Bluetooth radio. It ensures that the My Wirefree Network software can communicate with the Bluetooth radio. The test does not take very long. However, you can skip this test and continue with the setup wizard.

1. Tap **Test**.

An unsuccessful hardware test may mean your Bluetooth radio is not functioning properly. Refer to your device documentation to verify that the radio is properly installed. If the Bluetooth radio is a CF or other removable card, verify that the card is inserted properly. Verify that the power switch for builtin Bluetooth modules is in the ON position.



Setup will now verify that your wireless hardware is working correctly. Please tap Test to continue.

Skip Hardware Test

Test



Setup: My Services

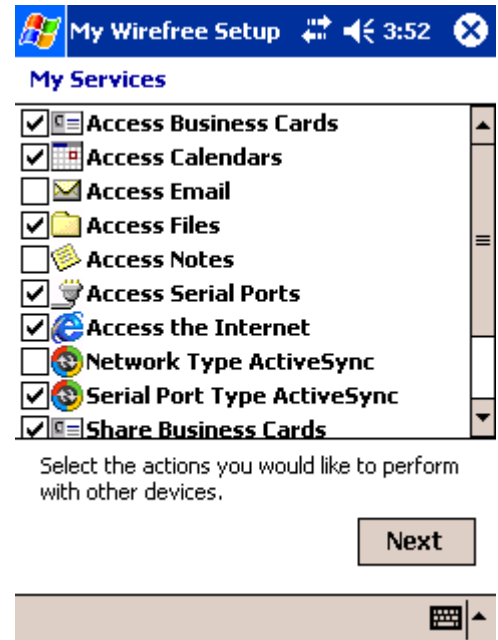
All services that can be accessed or shared by your device can be enabled or disabled now in the Setup Wizard or later from the **My Services** screen.

- **Access services.** Enable your device to see and use services on a remote device.
- **Share services.** Enable your device to provide services that other devices can see and access.

The following services can be enabled or disabled:

- **Access Audio Gateway*.**
- **Access Business Cards*.**
- **Access Calendars*.**
- **Access Email.**
- **Access Files*.**
- **Access Notes.**
- **Access Serial Ports*.**
- **Access the Internet*.**
- **Network Type ActiveSync.**
- **Serial Port Type ActiveSync*.**
- **Share Business Cards*.**
- **Share Files*.**
- **Share Serial Ports.**

(*These services are enabled by default.)



Each enabled service is displayed on the PDA screen with a check in its box.

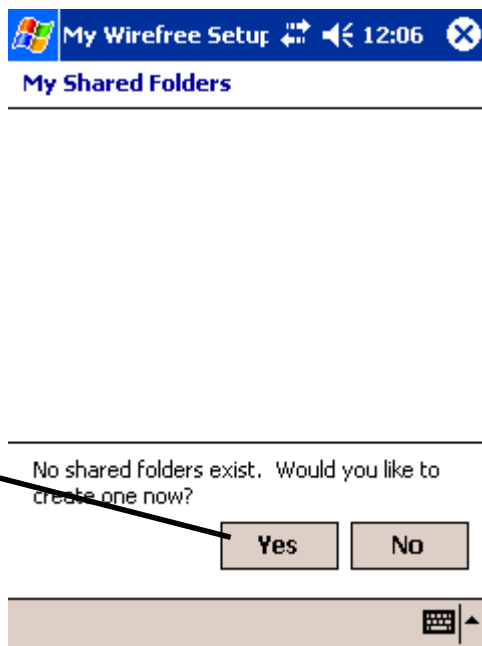
After enabling or disabling services, tap **Next**.

Setup: My Shared Folders

To make the files and subfolders available for others to use, a folder must be shared. By default, you will not have a shared folder when you start My Wirefree Network.

If you do not want to share any folders, Tap **No** and skip to the next section.

If you want to share a folder, Tap **Yes**.



If you type yes, the **Properties for Shared Folder** displays.

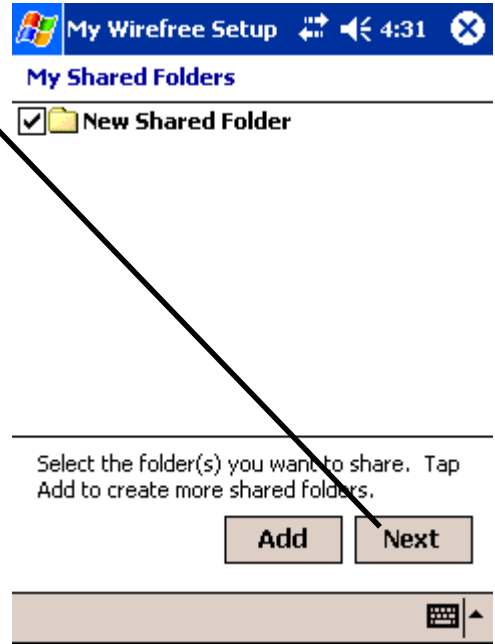
Type the **Share Name** which will be seen by remote users. By default it is named **New Shared Folder**.

Type an existing **Folder's** full path. The default value is **\My Documents**.

Tap **OK** to exit shared folder properties.



Tap **Add** to add another shared folder or tap **Next** to continue.



Setup: My Business Cards

This configuration option will display if you have contacts in the Contacts program. Each contact will be displayed with a check box. You will need to enter your own contact information into the Contacts program.

1. Tap the business card or cards that you desire sent to remote devices when a remote device requests your business card.
2. Tap **Next**.

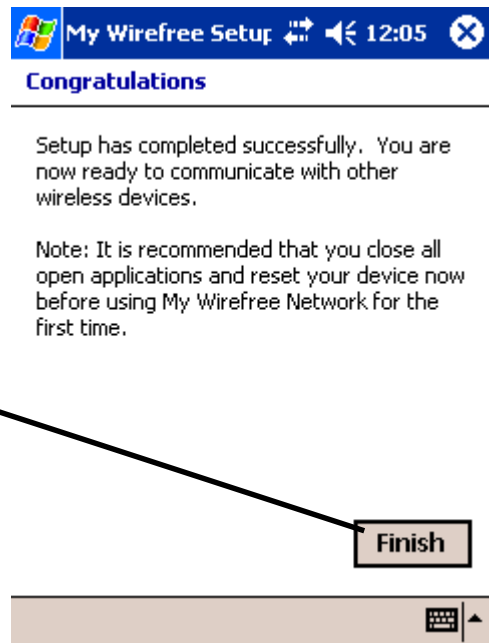


Setup: Complete!

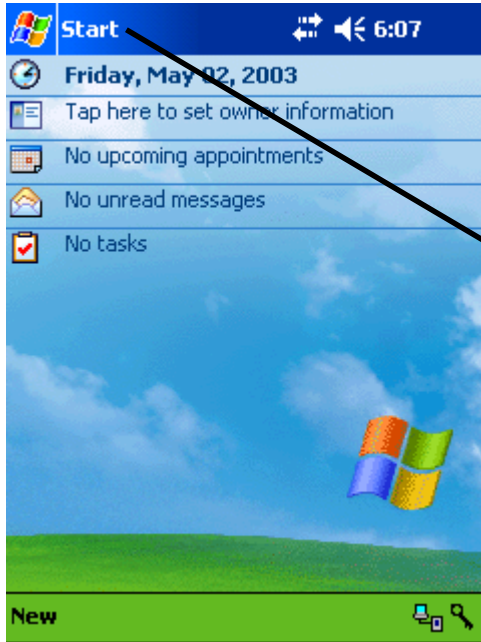
This screen displays when you have successfully configured My Wirefree Network.

1. Tap **Finish**.

My Wirefree Network is ready for use. Turn to the next page for further instructions on Starting My Wirefree Network.

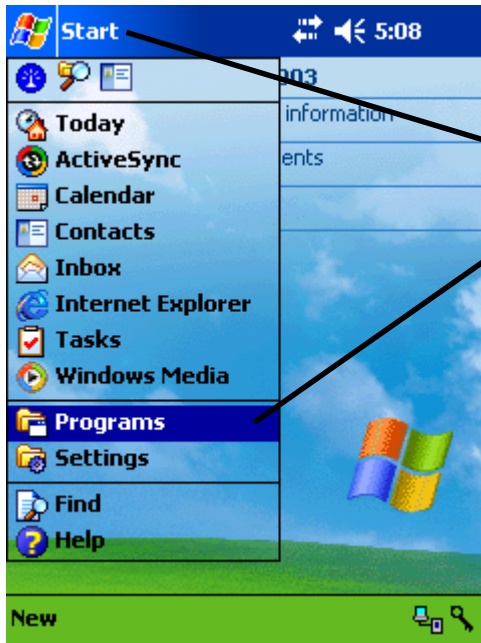
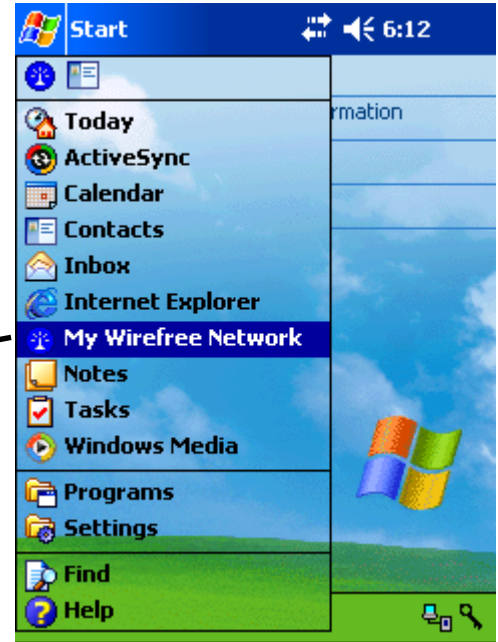


Starting My Wirefree Network



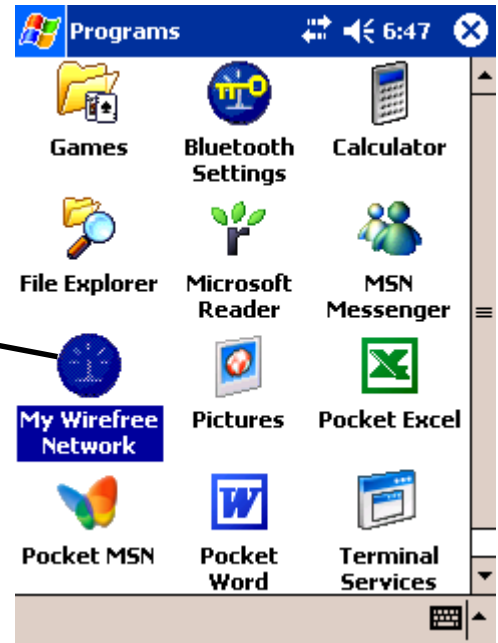
There are two ways to start My Wirefree Network. If My Wirefree Network appears in the Start menu:

1. Tap **Start**.
2. Tap **My Wirefree Network**



Otherwise, if My Wirefree Network does not appear when you tap **Start**,

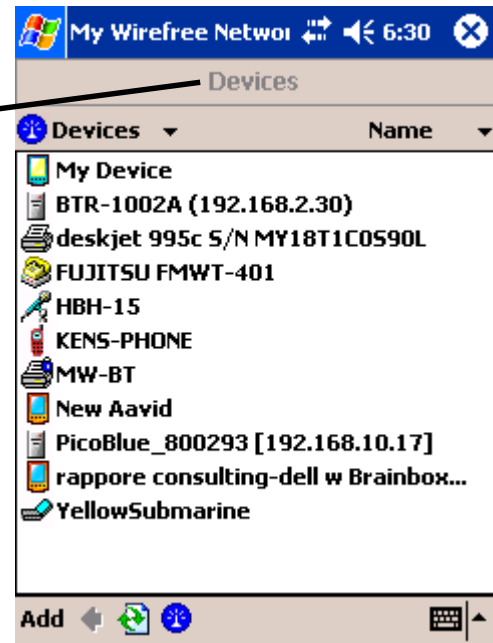
2. Tap **Programs**.
3. Then tap **My Wirefree Network** from the displayed icons.



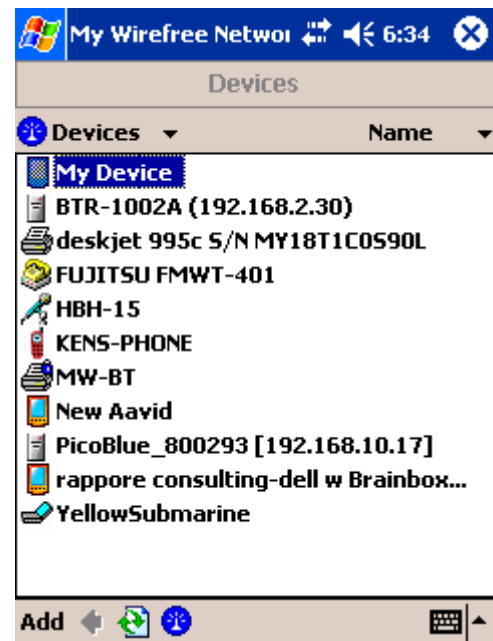
Device Discovery

The **My Wirefree Network** program has two main components:

Devices locates and lists other Bluetooth wireless devices by address or name, so that you can access the wireless devices and use the services they provide. The **Devices** screen is the first screen displayed by **My Wirefree Network** as it starts.



My Device aids you in configuring your own device and the resources that you choose to share with other wireless devices.



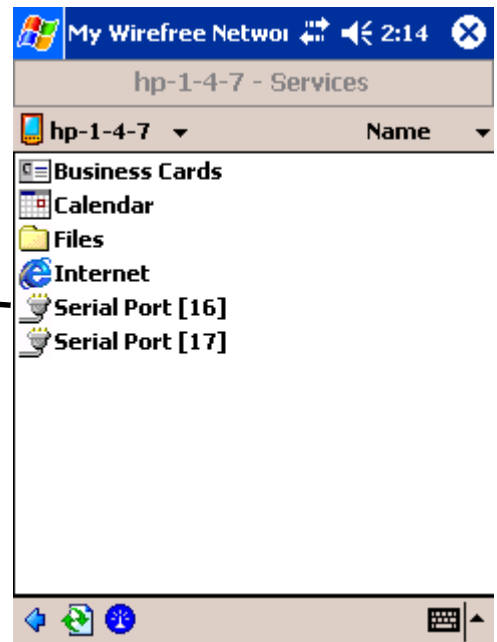
Serial Ports

Serial Port (SPP) on Remote Device

The Serial Port service emulates an RS232 (or similar) serial cable. The service name will usually identify the serial port assigned by the remote device.

Tap **Serial Port**.

A connection is established to the identified serial port for application use.

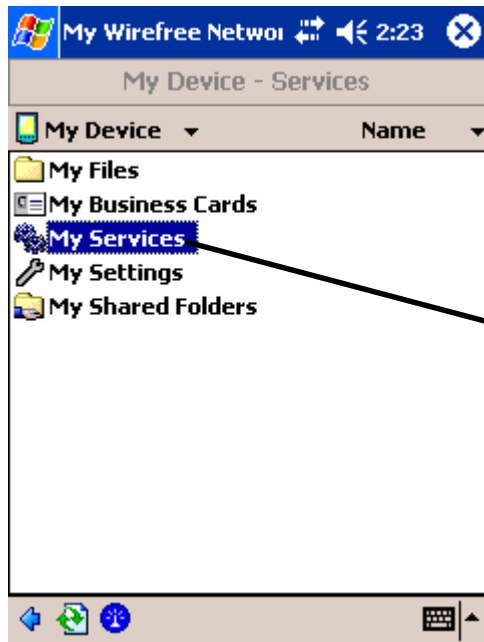
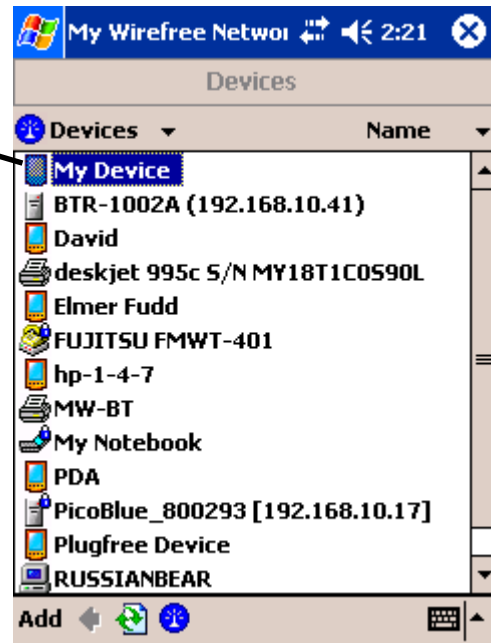


Share Serial Ports

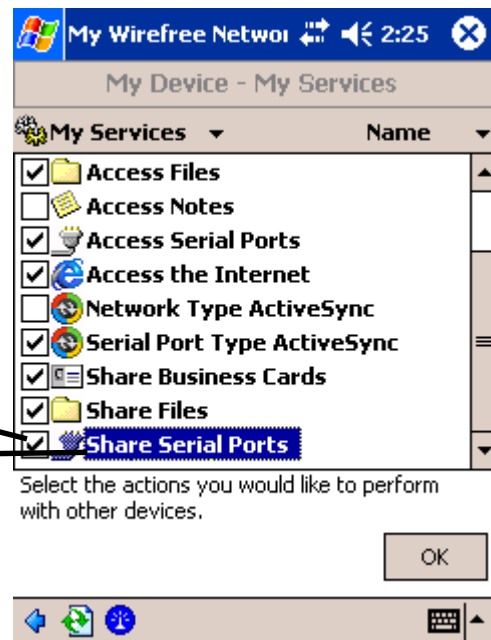
A shared serial port must be added before a Serial Port service can be displayed to remote users. The Shared Serial Port list also displays those serial ports (SER# and COM#) created by using remote serial device services.

Add a Serial Port

From the Devices screen, tap **My Device**.



Tap **My Services**.

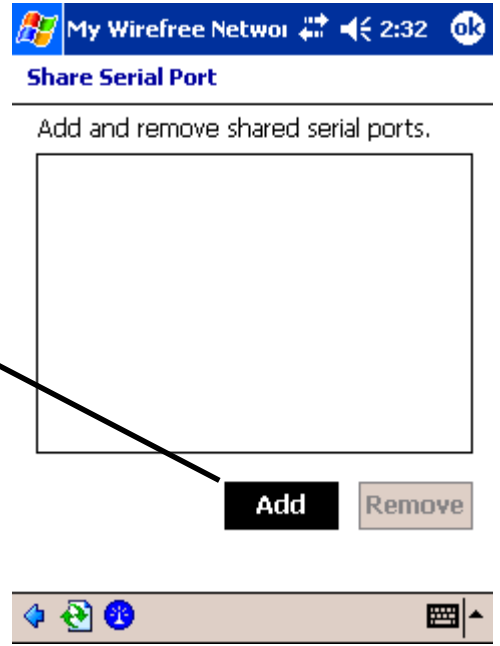


If the checkbox in front of **Share Serial Ports** is not checked, tap it to make a check appear.

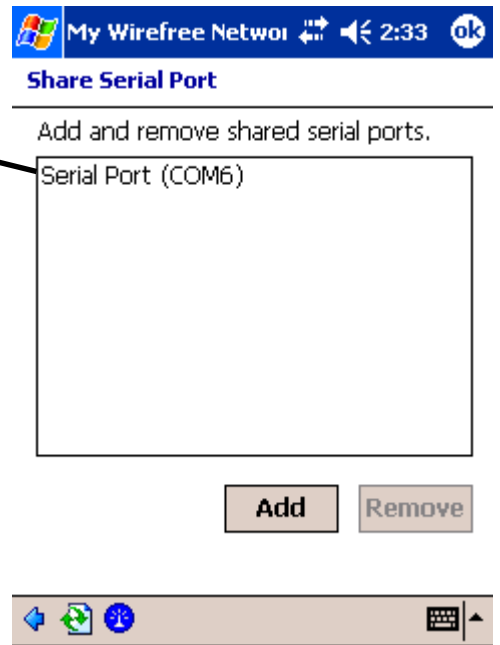
Tap **Share Serial Ports**.

Tap **Add**.

A serial port is established.

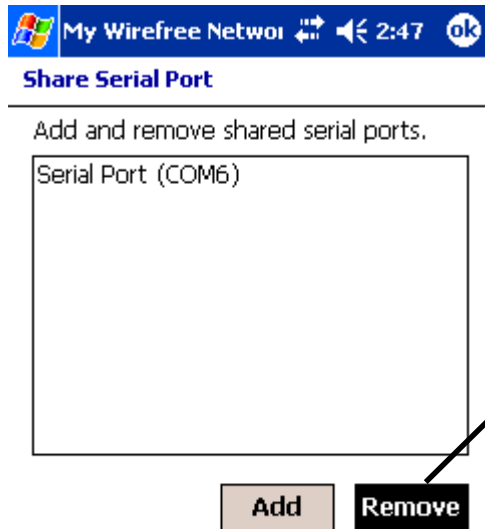
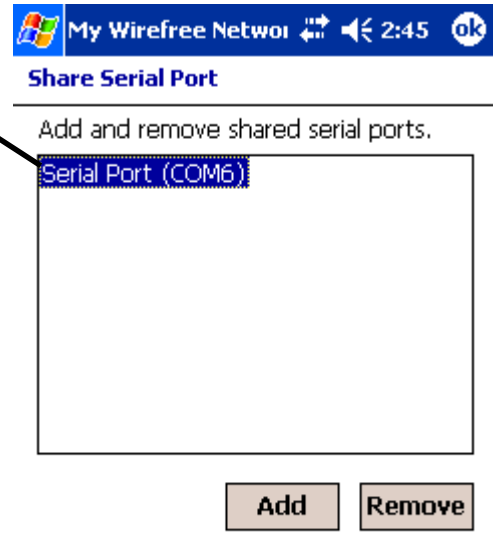


Serial Port (COM#) is the name format used for the list.



Remove a Serial Port

Tap on the serial port you wish to remove.



Tap **Remove**.



The serial port is removed from the list.

Note: Depending on the PDA configuration, typically only 4 COM ports are available for application use.



Specifications

Transmission method	FHSS system
Wireless channels used	Channels 1 to 79
RF frequency band	2402-2480 MHz